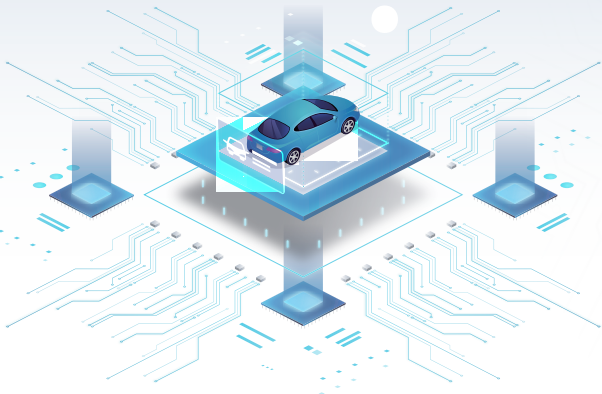
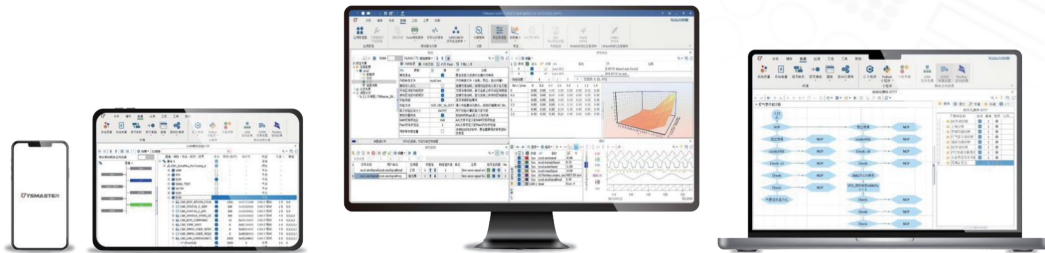


TOSUN Product





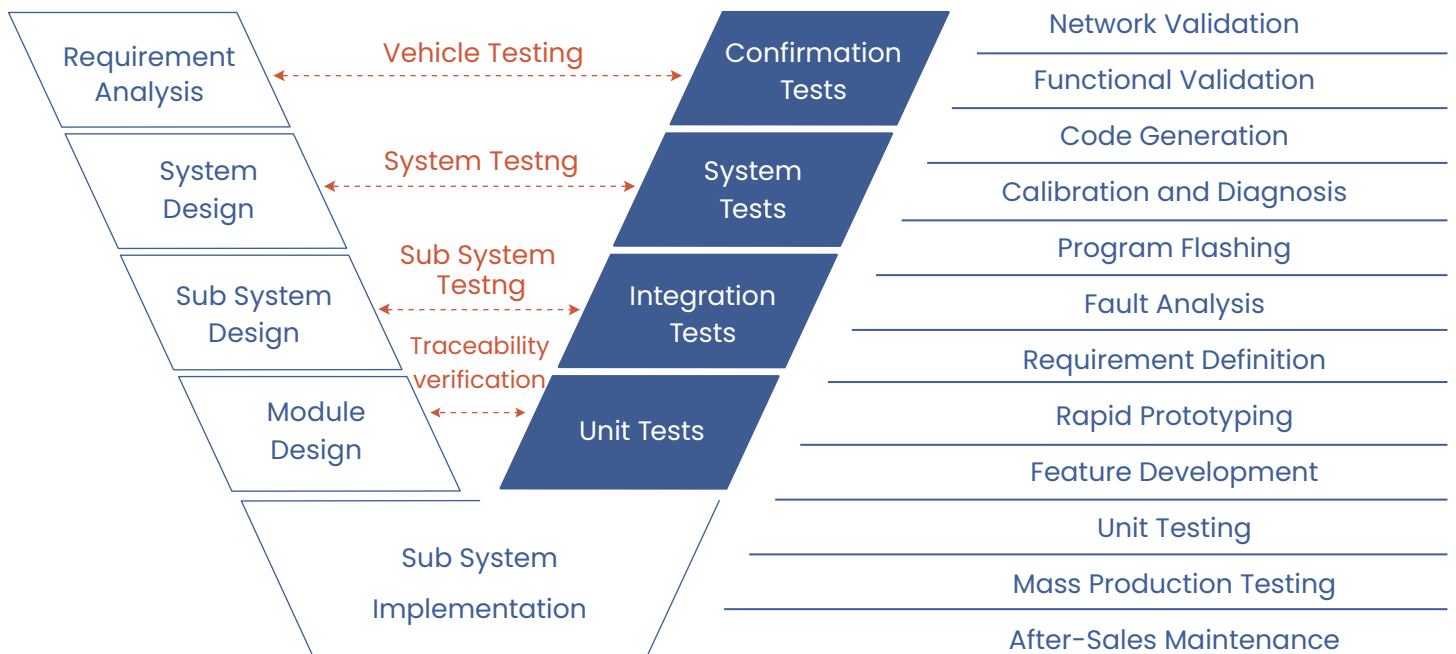
TOSUN Defines Software Software Defines Vehicles



TSMaster provides end-to-end **support for the V-Shape model of automotive development**. TSMaster provides comprehensive development and testing support for Model-based Systems Engineering (MBSE).

Each line of code written by the user based on the TSMaster software is hardware-independent, shareable, referable, and cross-platform.

V Model

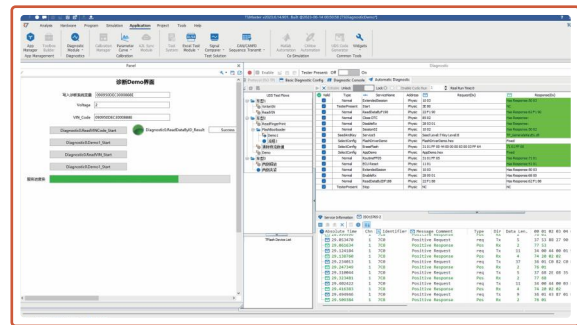
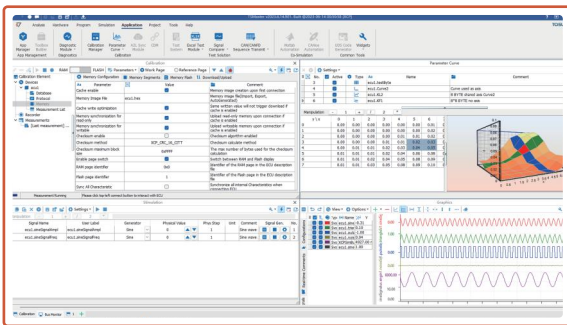


CCP/XCP Calibration

- Support for importing A2L files
- Support for DAQ/Polling measurements
- Support for parameter curves, MAP graphs, etc
- Storage and playback of MDF/MF4 files
- Curve representation of graphical variables
- Support for par or hex formats
- Automation of calibration possible
- Support multi file downloads
- Calibration data management

UDS Diagnostics

- Zero coding background needed
- Reduce development time (Turn 30 days into 1 day)
- Support Seedkey DLL / algorithm editor
- Combined service 343637 included
- Support ODX/PDX files into TSMaster
- DTC analysis available



Basic Functions

- Over 75 software function available
- Support dbc, ldf, xml, arxml, and PDU database
- Support C and python script
- Support up to 64 channels
- Support datalogging and replay convert database file available
- Support blf, asc, csv, and mat formats
- Support Windows 11 and Linux API

CAN CAN FD LIN DOIP Bootloader test

- TC1011 TC1012 TC1013 TC1014
TC1016 TC1017 TC1018
- Support up to 12 CAN FD channels
- TE1051
- 100/1000Base-T1 Interface Tool
 - 100Base-Tx 1000Base-T



Offline Flasher

- TF1011
- Handheld ECU Flashing Tool
 - Protect and encrypt flash file



GPS/Fiber Optic Tools

- TM2101
- GPS/IMU to CAN/CAN FD Module
- TO1013
- Dual channel CAN/CAN FD to fiber optic tool



TTS Testing System

- One main chassis and various functional cards



TOSUN

TOSUN Technology



Youtube



LinkedIn



Website KR



Website DE



WhatsApp



Website US