

## THRILLING FACTS ABOUT US



Our products and solutions allow clever minds to focus on software innovations rather than being tied up in frustrating testing processes.

ROCCO DEUTSCHMANN (CEO)

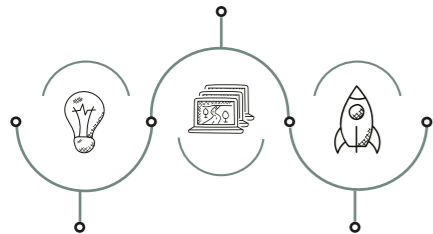


## SOFTWARE TESTING. SIMPLIFIED.

### tracetrone IN A MINUTE

#### WHAT WE DO

We test automotive software down to the smallest detail. This is quick and easy with our products and solutions, as we can automate everything related to testing.



#### OUR MISSION

With our highly automated platform, we simplify and accelerate the cross-company collaboration of thousands of participants worldwide for the chain from source code to vehicle.

#### OUR VISION

We enable continuous, timely releases – even of the most complex SDVs – error-free, stress-free and with full functionality. Worldwide.

### TEST DOMAINS & ENVIRONMENTS

### INDUSTRIES

AUTOMOTIVE & NON-AUTOMOTIVE

### POWERTRAIN

ELECTRIC, HYDROGEN, COMBUSTION

### INFOTAINMENT/ MULTIMEDIA/UI/UX

SDV/DOMAIN CONTROLLER/HPC

### ADAS/AD

SIL, HiL, ViL  
CLOUD, SCALING

... CAR, TRUCK, MOTORBIKE, BOAT, TRAIN,  
AGRICULTURAL MACHINERY, ...

### OUR CLIENTS



### NUMBERS & PRODUCTS

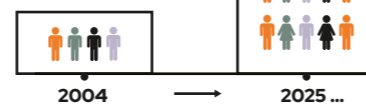
4 products 1 platform multiple solutions



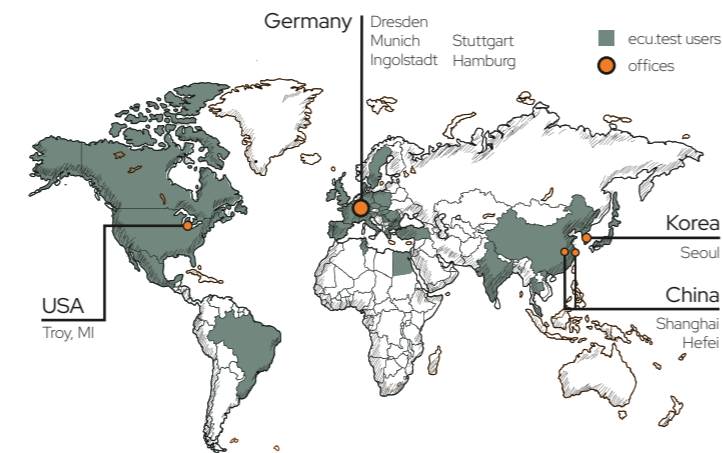
100% PRIVATELY HELD  
FROM THE  
START  
(AND 4 EVER)

500+  
passionate  
employees

4 founders



### WORLD MARKET LEADER IN TEST AUTOMATION



With us,  
you can cut the time for  
**manual test runs** by 80%.  
What used to take **a week**,  
now takes just **a night**.

as of June 2024.

## Software Testing. Simplified.

### ecu.test



ecu.test is a flexible test automation tool for virtual and hardware-related testing of automotive software.

- automation of over 80 tools via API
- low-code test automation in MiL, SiL, HiL environments and vehicle
- test all vehicle variants in the same tool

### test.guide



test.guide helps all stakeholders in the testing process to get safe vehicles on the road in a fast and easy way.

- management of test data and analyses of test results
- test infrastructure monitoring
- automated test-pipeline orchestration

### trace.check



trace.check is used for the comprehensive and automatic analysis of measurement data (traces).

- automated post-processing report generation and interactive result analysis
- supporting all common recording formats
- time-axis handling and synchronization

### scenario.architect



scenario.architect is used to create, evaluate and validate logical scenarios in an end-to-end ADAS/AD workflow.

- set up typical road scenarios
- seamless transition from scenario to test, including specification
- using ASAM OpenScenario standard

### Continuous Testing

- continuous integration (CI) for shorter release cycles
- scalable and highly automated, parallel test executions
- combining multi-staging and DevOps principles for all test stages (MiL, SiL, HiL and vehicle)
- early error identifying

### ADAS/AD

- event-based scenario creation
- different test methods, e.g.
  - requirement-based testing
  - scenario-based testing
  - failure injection
- specify scenario and test in a standard format
- automated parameter variation of scenarios

### Powertrain

- reading and writing bus and diagnostic data without additional tools
- standardized interfaces for data exchange via APIs
- support all automotive data formats
- providing specific test case generators

### Infotainment

- text and image recognition
- audio testing
  - text-to-speech
  - speech-to-text
- video analyses
- touch screen manipulation
- mobile device and browser testing

