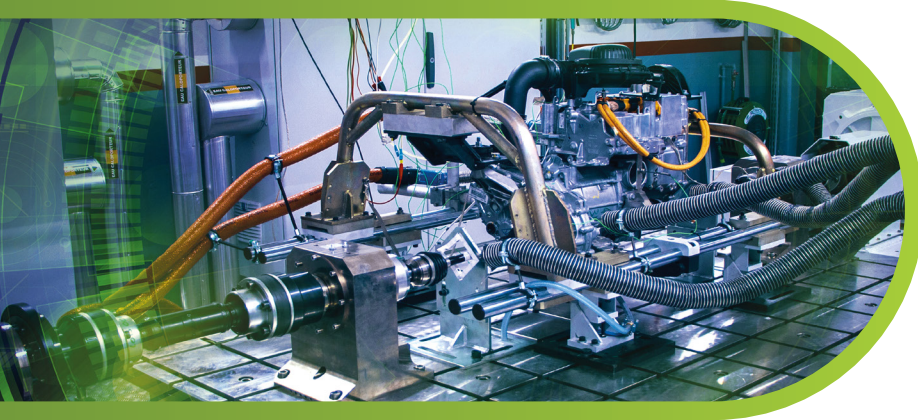


ENORISE

Simulate, Automate, Qualify

Company Profile



Who We are



For 35 years, the globally active ENORISE company has been producing state-of-the-art test benches and measuring and testing equipment, as well as software solutions for the automotive, aerospace, railway, marine and energy markets. Its MORPHEE® automation system has become a market benchmark, helping 12,000 users every day to efficiently manage their test benches.

Today, ENORISE is developing new software solutions that are revolutionizing the world of testing: automation solutions and data management increasingly oriented towards the cloud, and greater use of simulation.

Our fields of applications



Automobile



Motorbike



Maritime



Railway



Defense



Trucks



Aerospace



Energy



Off highway



ATV

Our Values

PASSION

It's what drives us and connects all our values to each other



Power

We are always looking to empower the productivity and efficiency of your projects utilizing the power of our products, such as MORPHEE, FlexLAB, Virtual Dynamics and others.



Agility

Our teams' creativity and agility drive us to continuously discover groundbreaking solutions.



Sustainability

Creating lasting value for our customers and communities through responsible innovation.



Stability

In our products and the processes we control, backed by our extensive experience and corporate dependability.



Innovation

Beyond our mastery of new technologies, what underpins our spirit of innovation is our openness to new ideas and our tenacity in putting them into practice.



Openness

Our products' open architecture is adaptable to all industrial environments due to our broad vision and our uncompromising drive



ENTrepreneurship

We're never satisfied with what we've got. We're always on the lookout for new horizons, and our energy to develop new business never wanes.

320

Employees

12.000

Users

35

Years of experience

13.5

million running hours per year

5.000

Test beds installed worldwide

About us

FEV's former Software and Testing Solutions

On June 4, 2024, Certina Group took over FEV's Software and Testing Solutions division, responsible for testing systems. Its new name, ENORISE, expresses its mission to energize the productivity of its customers' testing systems. The name "ENORISE" also expresses the company's positioning in the energy markets and their various applications in the mobility sectors: automotive, aeronautical, rail, maritime and defense.



1990
MORPHEE
16 bit
Windows 3.0
10Hz/100Hz



1994
OSIRIS
Fast Data
Acquisition



2000
TEST MANAGER
Data
Management



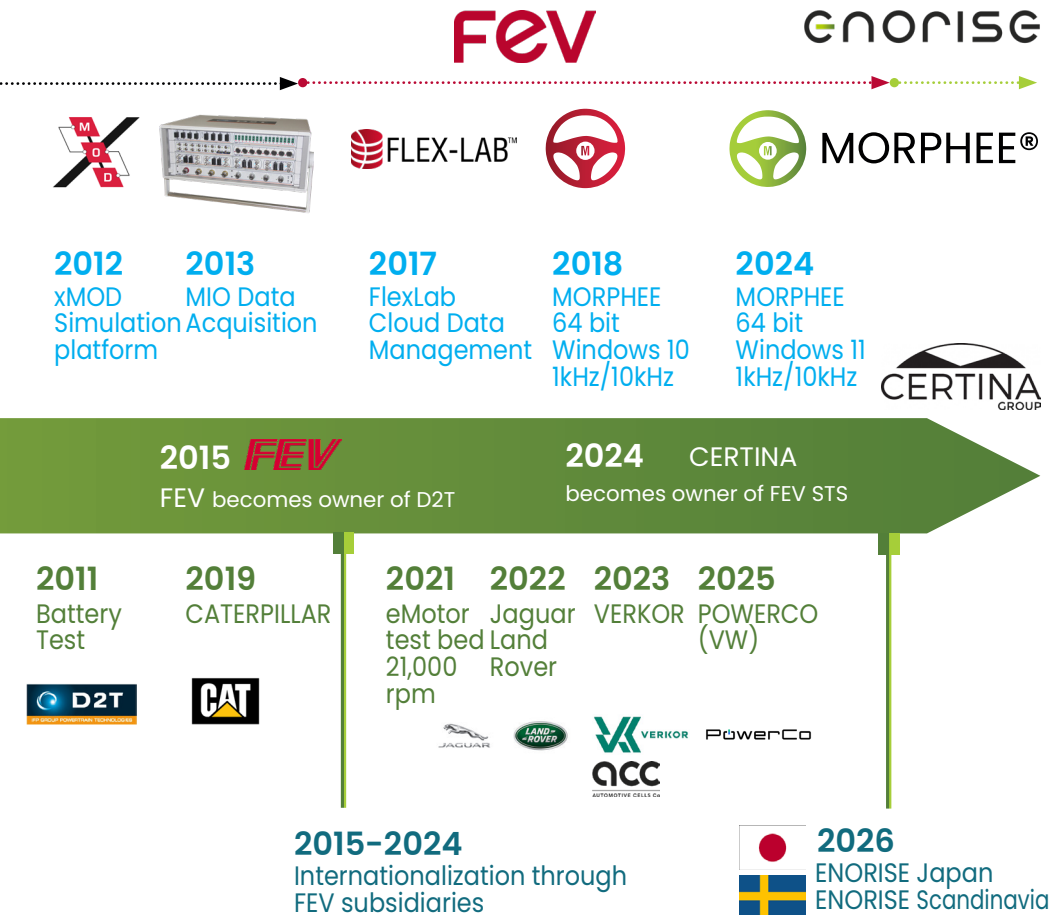
2000
Design of
our own
dynamometer
range



2008
MORPHEE 2
32 bit
Windows XP
1kHz/10kHz

<p>1989 MACAO</p>	<p>1995 Birth of D2T</p>	<p>2000 Buyout EREME, Test Bed Engineering</p>	<p>2004 IFPEN becomes owner of D2T</p>
<p>1989-1996 GARRETT, SIEMENS VDO, PSA, RENAULT, TOTAL, IFP, BMW</p> <p> </p>	<p>2000 PERKINS</p> <p></p>	<p>2002 VOLVO GROUP</p> <p> </p> <p>2003 JOHN DEERE</p> <p></p>	<p>2005 HMC 11 Dynos</p> <p></p>
<p> 1997 D2T Germany</p>	<p> 1999 D2T America</p>	<p>2004 D2T China D2T Korea</p> <p> </p>	

division becomes ENORISE



Software products & custom software solutions



ENORISE is your partner in digitalization. Choose from a full range of industry proven software products. Or let us develop the tailored software solution for your needs. We provide end-to-end service – from planning and specification over realization to support.

Key solutions:

- VirtualDynamics® Multibody Simulation
- UniPlot® Data Evaluation Software
- Mobile Apps, Platform business
- SaaS / subscription mode
- ...



Tailored software solutions
that fit into your ecosystem
and solve today's challenges

Automation applications & measuring devices



ENORISE automates your processes. Move to the next level with MORPHEE®, our automation system shared by a community of 12,000 users worldwide. Discover our data management system to manage your test center. And for even greater efficiency, integrate AI into your systems.

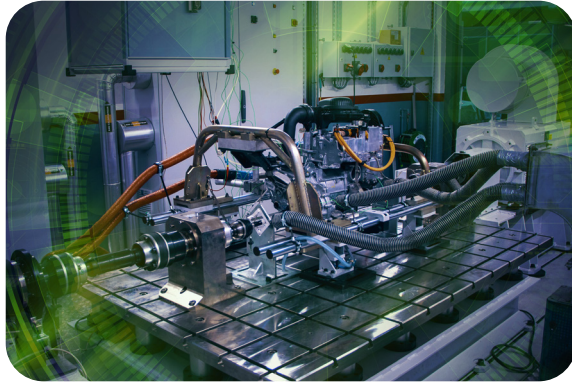
Key solutions:

- FLEX-LAB™ Lab Info Management System
- MORPHEE® Software & applications
- xMOD® Co-simulation & applications
- OSIRIS® Powermeter & Combustion
- MIO™ Universal Acquisition Modules



**MORPHEE® automation
system 12,000 users every
day for all kind of test
benches**

Test bed solutions & equipment



Energize the productivity of your test benches. Thanks to our unrivalled expertise and our high-tech equipment, ENORISE builds with you the next generation of your test solutions: conventional and HiL solutions for electric motors, fuel cells or H2 combustion engines.

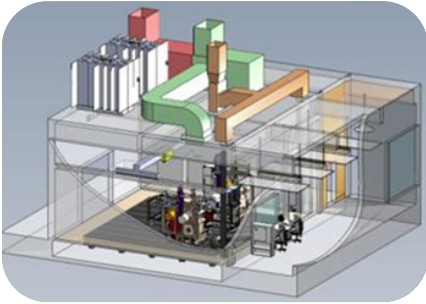
Key solutions:

- Conditioning units (xCON range)
- Measuring Units (xRate range)
- Battery Cyclers (Battery Craft)
- Testing BMS for modules (T-BMS)
- EC / AC / PM dynos (Dynamometer range)



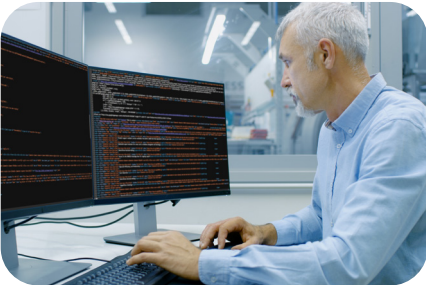
E-motors, E-axle, Battery
Combustion Engine
H2 & Fuel cell
HiL, EOL

Our services



Test Bed Engineering

ENORISE offers end-to-end solutions for test benches, facilities, and full test field installations, with a strong focus on sustainable, flexible, and long-term use of existing investments. Drawing on experience from over 300 test benches, we tailor solutions to your specific needs.



Resident Engineer

Our engineers provide on-site expertise to ensure efficient daily operation of your test benches, supporting troubleshooting, test execution, and coordination with your engineering teams to maximize uptime and performance.



Mechanical Engineering

ENORISE's Mechanical Design Department delivers high-precision mechanical solutions for complex test benches, combining vibration analysis, mechanical calculations, and rotating machinery integration to ensure safe, reliable, and durable performance.

Locations



ENORISE America Inc.

332 East Lincoln Avenue,
Royal Oak, MI 48067 USA
Tel: +1-844-3667473

ENORISE China

Area B, 1st Floor, Building 28,
No. 4671 Cao'an Road,
Anting Town, Jiading District,
Shanghai,
Tel: +86 (0)21 6076 6378

ENORISE Germany GmbH

Joseph-von-Fraunhofer-Straße 5
52477 Alsdorf
Tel: +49 241 5689 0

ENORISE Japan Co., Ltd.

515-5 Miyazawa-Cho
Akishima-City
Tokyo, 196-0024 Japan
Tel: +81-042-546-6500

ENORISE Canada Corporation

9-3041 Dougall avenue Suite 516
Windsor on N9E 1S3
Tel: +1 866-338-9990

ENORISE France SAS

Z.A. de Trappes - Élancourt
7 rue Roger Hennequin
F-78197 Trappes
Tel: +33 1 7330 9350

ENORISE India

Technical Center Pune A-21
Talegaon, MIDC
410507 PUNE, India
Tel: +91-2114692222

ENORISE Scandinavia AB

Distansgatan 2
421 74 Västra Frölunda
Sweden
Tel: +46 707 74 55 84

Sales Partners

Europe – Borghi & Saveri

<http://www.borghisaveri.it>

Europe – Chroma ATE Inc.

<https://www.chromaate.com/eu>

Türkiye & Middle-East PCS Test &
Otomasyon

China – PHENICIE

<https://www.phenicieperformance.com>

Japan – IDAJ

<http://www.idaj.co.jp>

Japan – Tokyo Plant

<https://www.tokyo-plant.co.jp/english/>

Korea – D2T Korea

<http://www.humac-d2t.co.kr>



enorise

Simulate, Automate, Qualify



**Are you interested in innovative,
pioneering software solutions?**

Contact us!

ENORISE

<https://www.enorise.com> | contact@enorise.com

