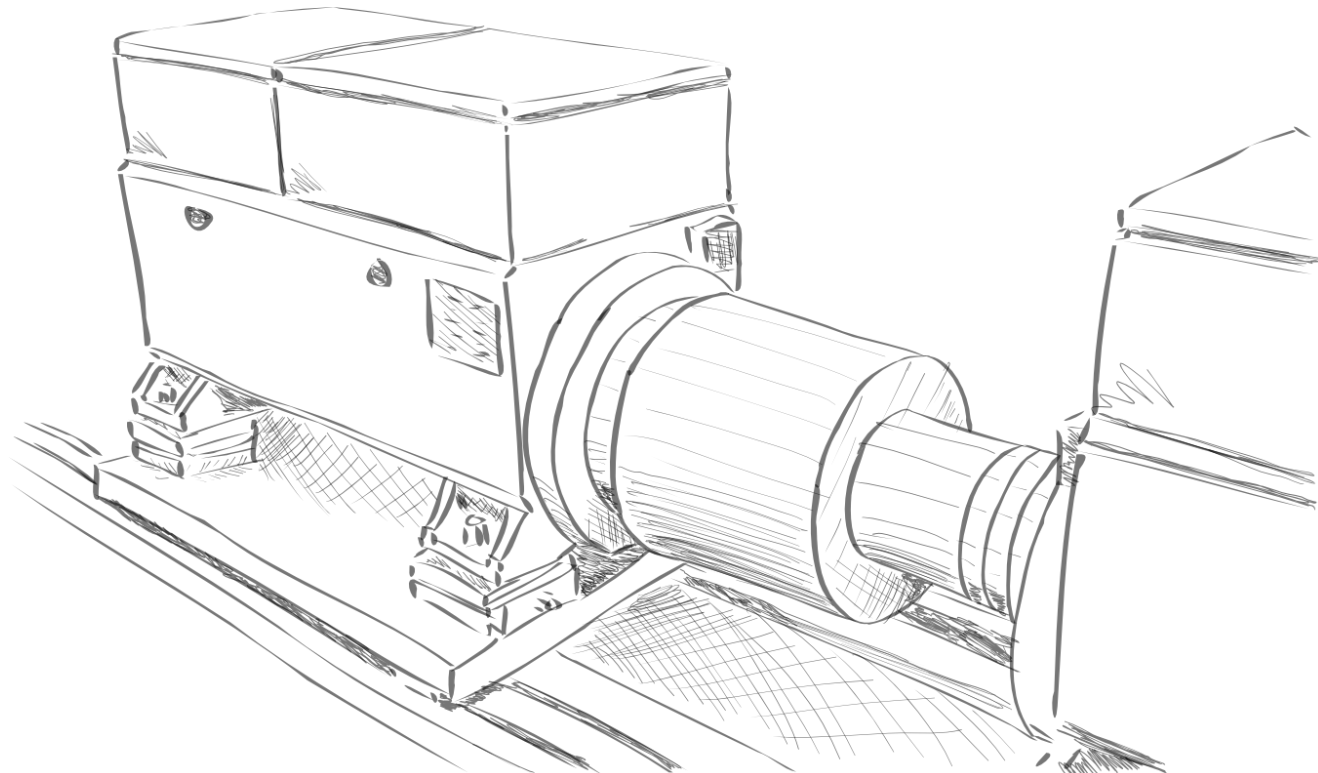
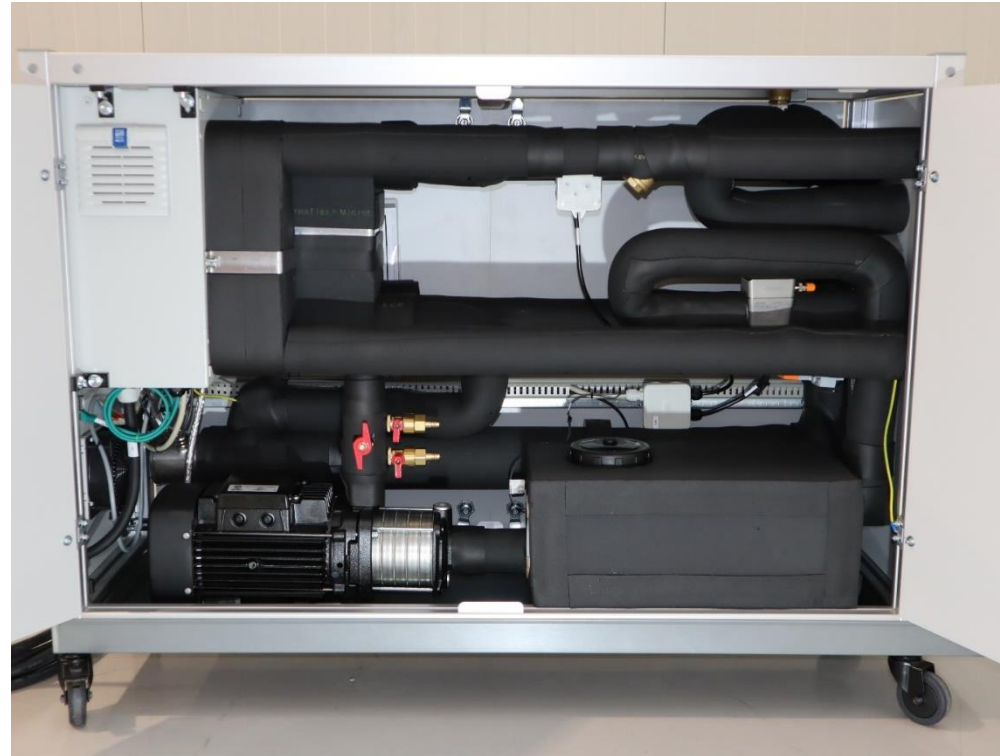


OPVterra

temperature & fluid control for electrical drives



Parameters	
Number of cooling circuits	2
Temperature range	-10° bis 90°
Max. volume flow	60 l/min
Max. pressure	2 bar
Coolant	water/glycol
Tank volume	18 l
Sensors	temperature 2x flow rate 1x pressure 1x
Control	temperatur flow rate
Heating	12 kW





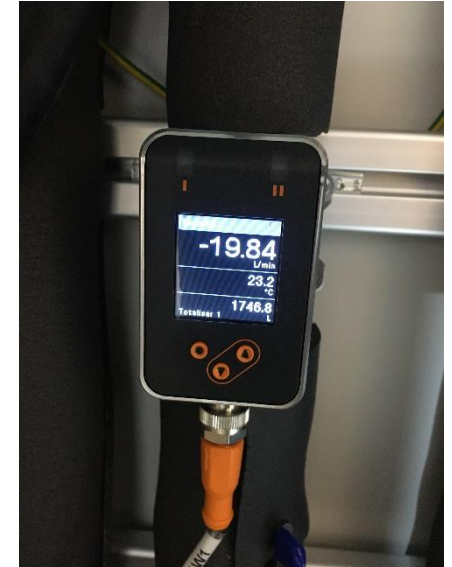
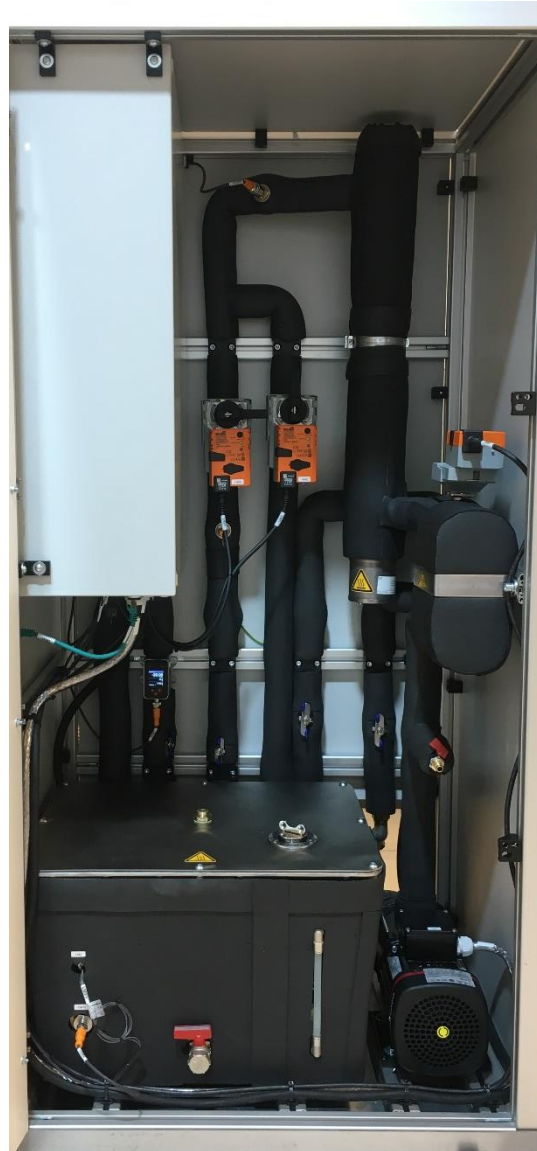
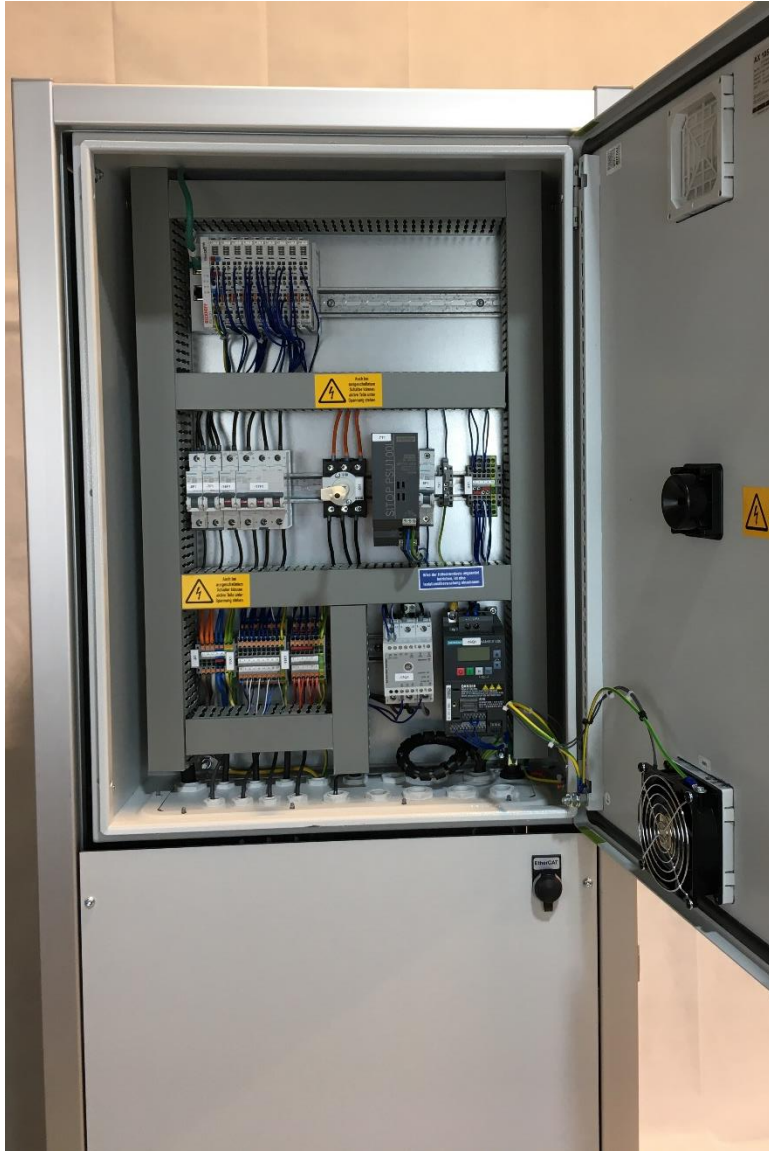
Parameters	
Number of cooling circuits	4
Temperature range	max. 90°C
Max. volume flow	40 l/min
Max. pressure	5,7 bar
Coolant	water
Tank volume	40 l
Sensors	temperature 6x flow rate 4x pressure 1x
Control	temperature flow rate
Heating	12 kW





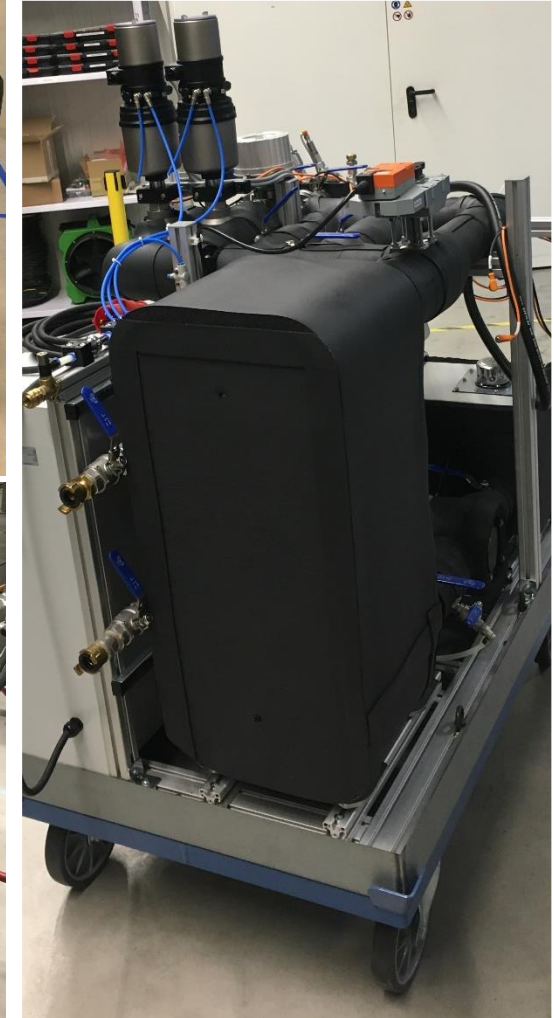
Parameters	
Number of cooling circuits	1
Temperature range	max. 90°C
Max. volume flow	15 l/min
Max. pressure	2 bar
Coolant	water/glycol
Tank volume	40 l
Sensors	temperature 3x flow rate 1x pressure 1x
Control	temperature, flow rate
Heating	9 kW





Suitable for operation with low-temperature brine (external device) and for the use of high-viscosity media

Parameters	
Number of cooling circuits	2
Temperature range	-30°C...120°C
Max. volume flow	50 l/min
Max. pressure	10 bar
Coolant	oil
Tank volume	40 l
Sensors	temperature 5x flow rate 2x pressure 3x
Control	temperature, flow rate
Heating	without



Parameters	
Number of cooling circuits	3
Temperature range	15°C...90°C
Max. volume flow	20 l/min each circle
Max. pressure	10 bar
Coolant	oil
Cooling power	25 kW
Heating	10 kW
Control	temperature, flow rate



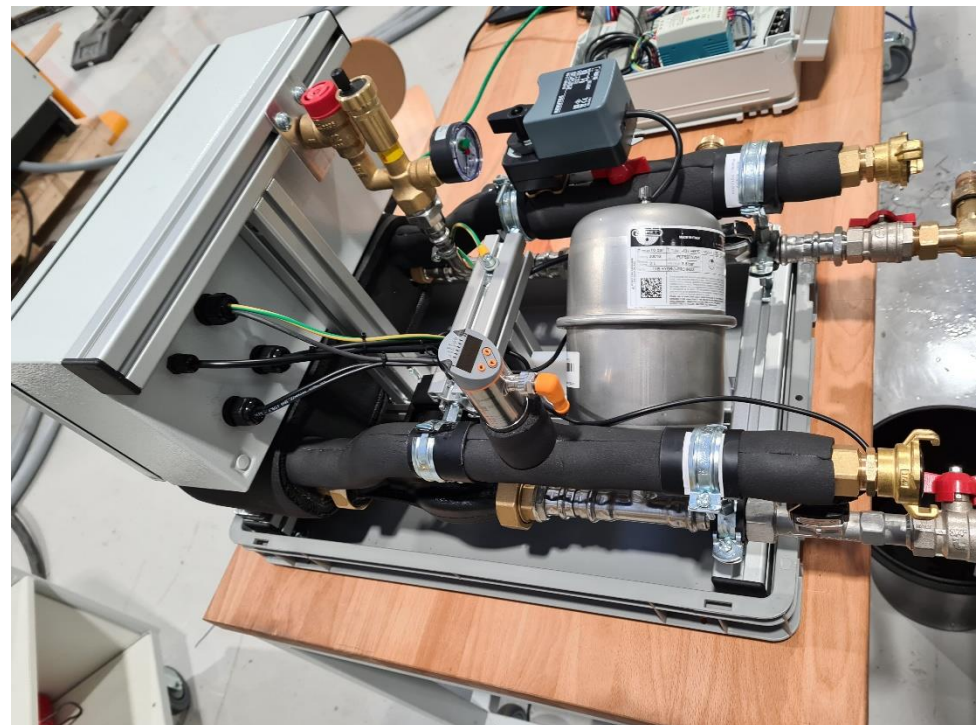
Conditioning unit for an AC test rig motor with jacket, bearing, and shaft cooling with two pressure levels

Parameters	
Number of cooling circuits	4
Temperature range	max. 50°C
Max. volume flow	50 l/min
Max. pressure	1,2 bar
Coolant	water/glycol
Tank volume	30 l
Sensors	temperature 6x flow rate 4x pressure 1x
Control	temperature, flow rate
Heating	without



Compact conditioning unit in DIN/Euro container size for simple applications such as cooling a load motor with constant temperature and volume flow; use of the Euro container as a water catchment tray.

Parameters	
Number of cooling circuits	1
Temperature range	25°C
Max. volume flow	15 l/min
Max. pressure	2 bar
Coolant	water/glycol
Tank volume	without
Sensors	temperature 3x flow rate 2x pressure 1x
Control	temperature, flow rate
Heating	without



OPVengineering GmbH

Fiduciastr. 4

D - 76227 Karlsruhe

Germany

Phone **+49 721 – 7918 7060**

E-Mail **info@opvengineering.de**

Web **www.opvengineering.de**

