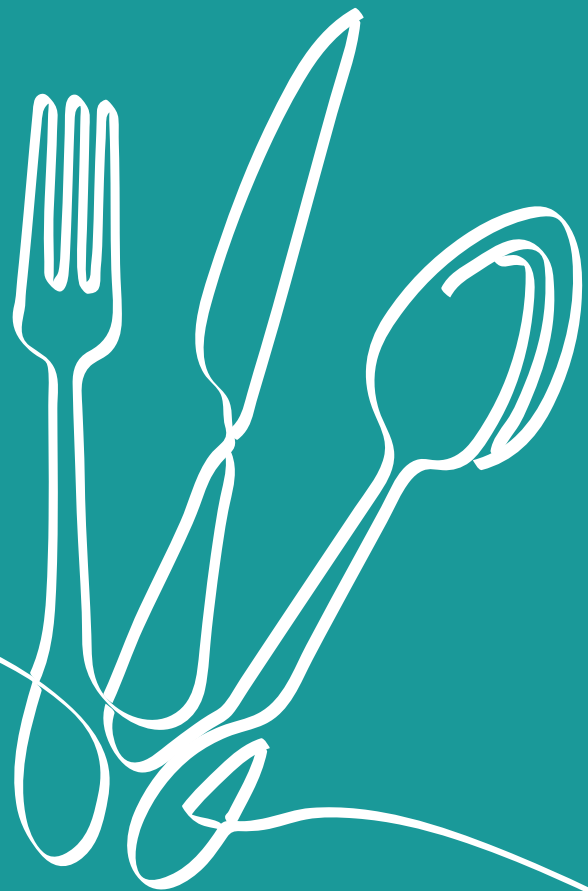




Building a better future for care

30 April - 1 May 2025 Excel London



Catering, Hydration & Nutrition

at Care Show London

30 April - 1 May 2025, Excel London

www.careshowlondon.co.uk

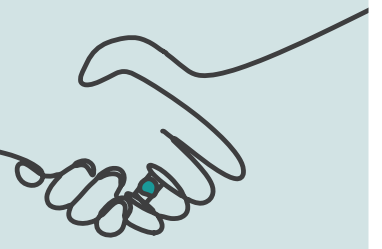
Organised by:



Join the conversation: #CareShow25

 @CareShow  @CareShows  /Care-Show

An introduction to Catering, Hydration & Nutrition



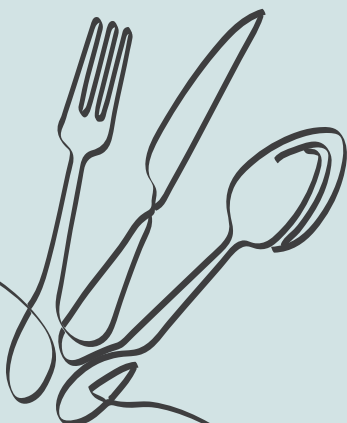
Welcome to a brand-new educational focus on **Catering, Hydration & Nutrition** at Care Show London on the 30 April – 1 May 2025. This new theatre will address the growing demand for improved food quality and resident well-being in care homes and nursing homes.

Bringing you an unparalleled opportunity for exhibitors and speakers to showcase your expertise, products, and services to an engaged and targeted audience eager to implement the latest innovations in residential care.

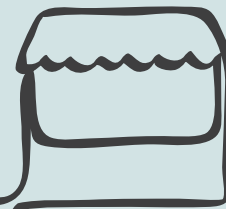


Why participate as an exhibitor or speaker?

- **Targeted exposure:** engage with chefs, procurement professionals, and registered managers who are decision-makers in the care sector.
- **Market your expertise:** position yourself as a specialist in catering, hydration, and nutrition.
- **Drive sales:** connect with attendees seeking innovative products and services to improve resident well-being.
- **Networking:** build lasting relationships with key players in the care sector.



Opportunities for exhibitors



1 Promote your brand on a stand

Showcase your products and services in a high-traffic zone tailored to your future and current clients within care.

Ideal for:

- Catering suppliers (food products, meal kits, etc.)
- White good manufacturers
- Hydration solutions (enhanced drinks, equipment)
- Technology for menu planning and dietary management.

Benefits:

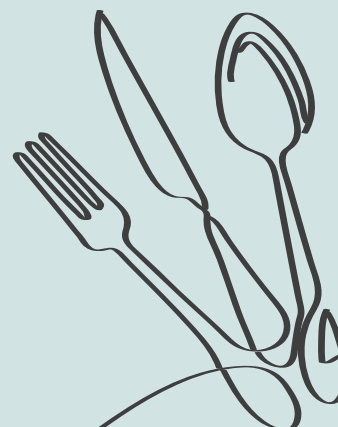
- Pre-show and on-site marketing promotion for this targeted new area to Care Show London
- Inclusion in the Care Show London's digital and printed exhibitor guide, including a special focus on this area to help boost your brand
- Be part of the largest brand of trade shows within social care
- See revenue growth with prospective customers.



2 Exclusive sponsorship packages

Gain maximum visibility by sponsoring key elements of the show, such as the new Catering, Hydration & Nutrition Theatre or even promotional goods on every chair to help drive customers to your stand.

4,000+ of your potential customers will be in attendance



Opportunities for speakers



1 Host an educational session

Share insights and practical strategies to improve catering, hydration, and nutrition in care settings.

Topics may include:

- Creative menu planning for diverse dietary needs
- Budget-friendly procurement strategies for nutritious ingredients
- Innovative hydration practices to prevent dehydration.

2 Panel discussions

Join a panel of sector leaders to discuss trends, challenges, and solutions in care home catering and nutrition.

3 Product demonstrations

Captivate the audience with live cooking or hydration demos to showcase practical solutions for care homes.

Examples:

- Meal preparation
- Easy-to-serve products.

4 Workshop opportunities

Lead an interactive workshop for hands-on learning. Ideal for chefs or procurement professionals eager to apply new techniques.



i Audience profile: YOUR CUSTOMER

Chefs: Responsible for menu design and meal preparation.

Procurement Managers: Focused on sourcing cost-effective, high-quality ingredients and tools.

Registered Managers: Overseeing the overall care environment, including food and hydration policies.

Join us at Care Show London



Take advantage of this platform to **connect**, **inspire**, and **drive change** in the care sector.

Booking Details

Exhibitor Booths

Starting from £2,895 +VAT

Special rate for NACC members

Contact us

Matthew Moore

Show Manager

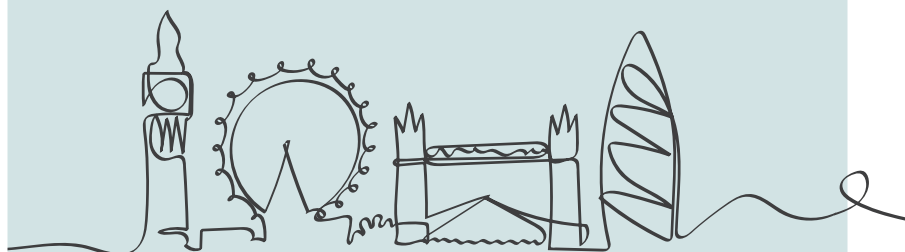
+44 (0)207 013 4987

m.moore@closerstillmedia.com



Building a better future for care

30 April - 1 May 2025 Excel London



Organised by:



www.careshowlondon.com

Join the conversation: #CareShow25

 @CareShow  @CareShows  /Care-Show