

Seeing is believing



Page 5

Virtual Dentistry



Page 6

Conference Programme



Pages 8 & 9

THERE'S MORE TO THIS... ...THAN MEETS THE EYE

In partnership with



Promoting British
Dental Technology



WWW.THE-DTS.CO.UK

PRE SHOW 2017

THE COUNTDOWN IS ON FOR DTS 2017!

With only weeks to go before The Dental Technology Showcase (DTS) 2017, the time has come to get organised to ensure you make the most of the huge opportunities available to you.



With so much to choose from, here are some of the features you really don't want to miss:

GET LEARNING

The two-day educational programme tailored specifically for dental technicians, clinical dental technicians and lab owners will offer hours of general and verifiable CPD. Key sessions to look out for include **Von Grow** in the DTS Lecture Theatre discussing the philosophy of the Dental Technicians Guild and what it does to raise the profile of technicians the world over; **Bill Marais's** lecture on how going back to basics could improve your skills; and **Leslie Stevens** considering the latest in appliances for sleep disordered breathing in children, in the OTA Seminars. There will also be plenty of sessions focusing on the business of running a lab, with industry-leading consultants offering a wealth of information and fresh inspiration for all.

GET UP-TO-DATE

Bringing you the latest from the industry, the trade floor will host over 100 lab-dedicated suppliers and manufacturers, with Launchpad UK highlighting the newest products, technologies and materials on the market. There will also be

on-stand learning and live demonstrations, as well as some fantastic deals and promotions to enjoy. Don't miss **DB Lab Supplies**, **Dentsply Sirona**, **Evident**, **GC UK**, **GSK**, **Henry Schein**, **Heraeus Kulzer**, **Ivoclar Vivadent**, **Panadent**, **Renishaw**, **Schottlander**, **Straumann** and **WHW**, among many, many more! Key dental lab organisations will also be in attendance such as the **BACDT**, **DLA**, **DTA** and **OTA**, so you can find out more about what they do and the membership benefits available.

GET TALKING

More than **1,800** delegates are expected this May, so you'll have the opportunity to catch up with friends and colleagues, while also making new business connections for the future. The event is co-located with The Dentistry Show, so you have the chance to meet with clients and prospective clients too!

GET SOCIAL

There is plenty to do at DTS, not least is the DTS Friday Night Social. Join us for a buffet dinner and an open bar in Wetherspoons for the chance to unwind after the first busy day of the show. Bring your team, clients and friends along too – everyone's welcome! Book your tickets by emailing d.earl@closerstillmedia.com today!

You and your whole team can access all of this and much more, completely free of charge.

Register for your **FREE** delegates passes online today!

A Political Perspective

The spring budget was full of surprises, but which announcements affect dental technicians and lab owners?

Find out more on page 4 ►

James Green at DTS 2017

Catering to all members of the dental lab community, DTS 2017 will once again offer sessions designed specifically for orthodontic technicians, supported by the Orthodontic Technicians Association (OTA).

Among the speakers presenting these sessions will be James Green from Great Ormond Street Hospital. He says:

"My presentation will look at the buccinator flap, a surgical procedure used to reconstruct soft tissue defects of the oral cavity, oropharynx and nasal septum and the dental appliances that can be used to prevent trauma during the healing process."



"Those attending this presentation should gain an insight into why a buccinator flap may be necessary and an understanding of the various materials and techniques used to make post buccinator flap trauma prevention appliances. They will also be able to recognise the benefits and drawbacks of the various appliances."

"I think The Dental Technology Showcase is a great event for dental technicians to attend as its focus is on the dental laboratory, both in terms of the exhibition and lectures."

2 EASY WAYS TO REGISTER – FREE!

1 ONLINE:
WWW.THE-DTS.CO.UK/PAPER

2 PHONE:
0207 348 5750



dentaltechshow



Dental Technology Showcase



@dentaltechshow #DTS17

In partnership with:



Event partners:



Media partners:



Sponsors:



Welcome from the DLA

Even on the surface, Dental Technology Showcase (DTS) 2017 looks set to deliver outstanding educational opportunities for all dental technicians. On closer inspection, however, there is even more than meets the eye...

Completely free to attend, DTS 2017 boasts an exceptional speaker line-up, combining the expertise of first-class speakers from the UK and across the globe. Some of the biggest names in the profession will take to the podium to demonstrate the latest concepts, materials and innovations at the very forefront of dental technology.



Steven Campbell,
DLA President

The DTS Lecture Theatre will once again be chaired by Phil Reddington, who has helped design a varied and informative programme. The Dental Technicians Guild (DTG) also has a big part to play this year. All the speakers in this theatre are members and founder of the DTG – Von Grow – will be joining us to present his very first lecture in the UK, sharing the group's ideals and inspiring others to get involved for the good of the profession.

Other features like the Digital & Innovation Theatre, ADI Implant Theatre and Orthodontic Technicians' Stream (supported by the Orthodontic Technicians Association) will provide further learning opportunities for technicians and clinical dental technicians. What's more, lab owners will find important updates, fresh ideas and bespoke advice in the Dental Business Theatre.

Here's a first look at the programme you can look forward to...

TRAVELLING TO THE DTS

By Road

Birmingham is at the hub of the UK motorway network, enabling visitors to travel directly from the M6, M1, M40 and M42. The NEC has its own on-site car parks.



By Rail*

The NEC is served by Birmingham International station, connected by a covered bridgelink. London is only 70 minutes away and trains also run direct to many regional towns and cities.



First ride free
up to £15

Get a reliable ride in minutes
with the Uber app.

Sign up with the code **DTSUBER** at [Uber.com/app](https://uber.com/app)

First-time riders only. Expires 24/10/2017

WHEN & WHERE

**HALL 5,
NEC BIRMINGHAM**

12th – 13th
May 2017

Friday 12th:
09:00 – 17:30
(Friday Night Social from 17:30)

Saturday 13th:
09:00 – 16:30

SPECIAL OFFER

*Get **25% off rail tickets** with Virgin trains advance fares when travelling to the NEC on a West Coast Mainline service. To take advantage of this offer, visit www.virgintrains.co.uk/nec to book your tickets.

YOUR BEST DENTURE ADVICE KEEPS THEM CLOSE



POLIGRIP® Daily Cleansers for Dentures are proven to penetrate the biofilm* and kill microorganisms within hard-to-reach surface pores.¹

POLIGRIP® Daily Cleansers for Dentures are non-abrasive² to clean⁵ the delicate denture material without scratching.²



Help your patients eat, speak and smile with confidence
with the Poligrip® denture care regime.

*In vitro single species biofilm after 5 minutes soak. References: 1. GSK Data on File, Lux R. 2012. 2. GSK Data on File, Fernandez et al. 2006. Trade marks are owned by or licensed to the GSK group of companies. CHGBI/CHPOLG/0014/16



dentaltechshow



Dental Technology Showcase



@dentaltechshow

One step back, ten steps forward

Dentistry today is ablaze with cutting-edge technologies, all designed to simplify the professional workflow while enhancing the clinical outcome and patient experience. Advancements in this field have boomed in the past decade, propelling dentistry into the digital era. Indeed, many suppliers suggest that only with their latest innovations can dental teams achieve the very best results, accrediting state-of-the-art software and equipment with the progression of the profession as a whole.



**Bill Marais, Lab Owner,
Disa Dental Studio**

While the value of modern technologies in dentistry today cannot be disputed, the sheer volume of products available on the market creates a new problem. How do you know which to purchase? How do you choose between manufacturers? What should you look for with regards to equipment and customer service?

Further still, how much of your business really depends on the technology you purchase? Is the opportunity to double your bottom line – as advertised by manufacturers – really afforded by the technology alone? Aren't there other factors at play?

The market for systems manufacturing dental restorations and prostheses today is tremendously overwhelming – for dental technicians and dentists alike. Extreme pressure from marketing propaganda dictates that in order to prevent 'falling behind' in an advancing health field, one must follow a particular course: a path to advance you in the dental field. Purchase a particular system and you will advance your lab, your skills and your artistry.

Circumstances dictated my professional choices several years ago. Because of my situation, I was forced to resort to using the fundamentals of dental technology. Reverting to the basics of dental technology not only supported the survival of my business, but it took my restorative skills to a level I never imagined possible."

Bill will be speaking at The Dental Technology Showcase (DTS) 2017, giving a lecture sponsored by GC entitled "One Step Back, Ten Steps Forward (Reverting to the Basics of Dental Technology)" in the DTS Lecture Theatre. About his session he adds:

I will discuss how dental technicians can go back to basics to add individuality and their own 'fingerprint' to each and every case that they do (applicable for both fixed and removable prosthetics). I hope this will help to give them a competitive



edge in what is now a vastly outsourced and technology-driven industry.

In addition, I will highlight the importance of removable prosthetics in every aspect of dentistry and offer my own top tips to help delegates improve their workflow. Finally, I hope to explore the importance of teamwork and communication between laboratory and practice as a means of ensuring the highest quality of prosthesis for every patient.

REGISTER ONLINE FOR DTS 2017 TODAY! WWW.THE-DTS.CO.UK/PAPER

sweden & martina
I M P L A N T O L O G Y



**dentistry
show**
for all that dentistry demands
12th & 13th May 2017 / NEC Birmingham
Visit us at Booth E25

Explore Digital Dentistry

Tri-Tech 3D brings triple-jetting technology to dental and orthodontics, ideal for creating implant models that mimic gum textures and colour.

Call the experts to discover which Stratasys 3D printer fits your dental needs.



TRI-TECH 3D
STANFORD MARSH GROUP



stratasys

Advanced 3D Print solutions from the UK leading experts
T: 01782 814551 | www.tritech3d.co.uk



dentaltechshow



Dental Technology Showcase



@dentaltechshow

WHW launches M-GIN from Amann Girrbach

Ceramill RE(L)AX: Fabricate an implant-supported bridge with gingiva sections reliably, quickly and easily

The brand new "Ceramill M-Gin", is a Ceramill Mind CAD software module. The module guides users of all experience, efficiently and intuitively through a step-by-step process to create a "Ceramill REAX" (Reliable-All-on-X) implant bridge.

An ideal design base is then created when used in combination with innovative, free Ceramill Mind functions. As part of the largest programme of updates you can now for example allow alignment of tooth groups or angulation of screw channels. Users can take advantage of the new Knut Miller tooth library when designing customised anterior teeth. Aesthetics at the click of a mouse perfectly describes the new library. Uniform cut-back structures without the time-consuming freeform process can create impeccable but reproducible results. Three different cut-back moulds provide an ideal basis for maximising the appearance of a restoration, taking into account all functional parameters.

Significant investment has also been made to ensure perfect harmony between the soft and hardware components for all the machines.



Milling strategies, specially developed for complex geometries of implant-supported bridges or cut-back structures, enable highly precise milling which results in the finest detail imaginable. The option of five-axis external processing reduces manual reworking to a minimum, while extending the product portfolio of the lab to include an indication that increases profits without any significant expenditure.

**Please come and see
REAX & M-GIN in person
at stands J10 & K10
@ DTS 2017**

Political perspective

The Spring Budget this year brought with it many surprises – not least of which was the Chancellor's shock announcement to reverse his decision to increase National Insurance Contributions for the self-employed.

Of those announcements that stuck, the following could be applied to dental technicians and lab owners:

- Personal allowance is to increase to **£11,500** for basic rate in 2017/18 and to **£12,500** by 2020. The higher-rate threshold is planned to rise to **£45,000** for 2017/18 and **£50,000** by the end of the current parliament in 2020.
- For labs that operate as limited companies, the tax-free dividend will reduce from the current £5,000 to **£2,000** in 2018/19, so there will be less benefit available for shareholders and owners receiving dividends.
- Corporation tax for limited companies will also decrease to **19%** from April 2017 and fall further to **17%** from 2020.
- The annual exemption amount for Capital Gains Tax will increase to **£11,300** for 2017/18.
- A pledge was made to provide **£435 million** in support of companies affected by the rises in business rates in England, in addition to the transitional relief announced last year. In practice, this should help those losing the Small Business Rate Relief, limiting your bill increases.



While personal allowance increases are always welcome by professionals in all industries, the Spring Budget didn't bring with it any particularly significant changes relevant to the dental lab community. In light of the current political landscape, this is not surprising – it seems we simply need to wait and see what happens as the powers that be negotiate the future of our country!

**REGISTER ONLINE FOR DTS 2017 TODAY!
WWW.THE-DTS.CO.UK/PAPER**

enigmali⁺

Inspired by nature, designed for living



enigmali⁺ denture teeth are truly inspired by nature. Our guide in their design was the beauty, detail and proportions that nature builds into our teeth and we sought to reproduce its miracle. Never before in a range of denture teeth has so much attention been paid to its natural beauty.

Visit us
on stand
B20

Freephone 0800 97 000 79
Freefax 0800 97 000 78

schottlander

4natur

Creating beautiful smiles, naturally



Whatever their budget, patients want really beautiful and truly functional dentures from you. After three years of development we are launching 4natur to meet this need.

4natur are head and shoulders above other teeth in a comparable price range. They are a private tooth you can be proud to provide for patients, yet come at a remarkably attractive cost.

NEW

sales@schottlander.co.uk
www.schottlander.com



dentaltechshow



Dental Technology Showcase



@dentaltechshow

Seeing is believing

straumann
simply doing more

Straumann will present a myriad of ground-breaking innovations at The Dentistry Show 2017.

As dentistry embraces the digital age like never before, this year's Dental Technology Show will provide a host of opportunities as Straumann unveil a number of exciting developments to their CARES® Digital Solutions portfolio, including leading scanning and milling technology, 3D printing and centralised milling.

Straumann® CARES® Digital Solutions combines interconnected software platforms, open and fully validated workflows alongside a wide variety of materials to offer:

- Straumann® CARES® D Series Milling Unit – Delivers an effective milling unit for dental labs offering 5-axis dry milling with a focus on efficient production of all dry millable materials including zirconia, PMMA, wax, Sintron and hybrid ceramics.
- Straumann® CARES® C Series Milling Unit – This extremely robust and compact 4-axis wet milling and grinding unit is specially designed to provide reliable and predictable precision milling of glass ceramic and hybrid materials for a wide variety of indications.
- Straumann® n!ce® Glass Ceramic material – The n!ce™ range is the new high-tech, glass-ceramic solution from Straumann® that delivers fast, esthetic restorations and meets the expectations of patients and dental professionals. Straumann n!ce can be milled through Straumann's centralised milling facility, or in-house with

the Straumann M Series and C Series.

- Straumann® CARES® P Series 3D Printers – A new standard in 3D printing for labs, offering exceptional speed and reliability specially tailored to satisfy the highest demands in both the dental practice and dental laboratory. Sturdy, reliable and suited to a wealth of applications – tomorrow's solution from the innovation leader for 3D printing in the dental field.
- Straumann® CARES® Desktop Scanner Series - Through its strategic collaboration with Dental Wings, Straumann have been able to develop, produce and support software and hardware of a reliable and high quality standard with the Straumann® CARES® 3Series and 7Series Scanners.

These in-lab desktop scanners effectively combine proven and established scanning processes with the latest computer technology in an elegant, functional design, to accurately scan models and impressions. The scanners combine proven laser triangulation technology with three or



five axes of freedom and are embedded with a powerful PC and Crown & Bridge module, Implant Prosthetics module and Model Builder as standard.

This exciting digital portfolio combines interconnected software platforms, open and fully validated workflows alongside with a wide variety of materials – a true benchmark in digital dentistry.

By adding an all-encompassing digital dimension to our offering Straumann aim to be more than a dental implant company – we want to be your total solutions partner.

Don't miss the opportunity to see all of these fantastic innovations. Visit Straumann on Stand B10 or contact Straumann on 01293 651230 to find out more.

REGISTER ONLINE FOR DTS 2017 TODAY! WWW.THE-DTS.CO.UK/PAPER

TOGETHER WE ENTER THE DIGITAL WORLD

Scanning

3D Printing

Data Transfer

Design

Milling

The Dentistry Show
NEC Birmingham
12th-13th May
Stand H25

From initial discussions through to installations and beyond Henry Schein Laboratory is here for you.

Our dedicated team includes:

- 8 service engineers
- 4 regional sales specialists
- Software specialists
- Financial experts

"Henry Schein offers a dedicated team of laboratory specialists on hand to help guide and support you. Come and talk to us today - Stand H25"

Call 0800 032 8018

To discuss further or to experience the digital workflow in action, book an appointment at our Digital Technology Centre.

Taking care of everything dental 0800 028 4870 henryschein.co.uk

• Business Solutions • CAD/CAM • Consumables • Decontamination • Digital Imaging • Education • Equipment • Laboratory • Lasers • Orthodontics • Service and Repair • Software • Surgical

Comprehensive lab workflow

It is probably fair to assume that the vast majority of dental labs in the UK now utilise the digital workflow in some way. It is no longer a thing of the future, but an every day occurrence throughout the profession. The benefits of this are plentiful and widely acknowledged to include faster, easier and more efficient procedures that deliver products with better aesthetics, accuracy and general quality.

We have now moved onto maximising the digital capabilities available, further streamlining processes and incorporating a more comprehensive system under the one roof. Various manufacturers offer an array of solutions that are designed to be used in combination for the very best results. Digital technologies underline the entire process and connect each stage of every case to ensure a smooth and seamless routine.

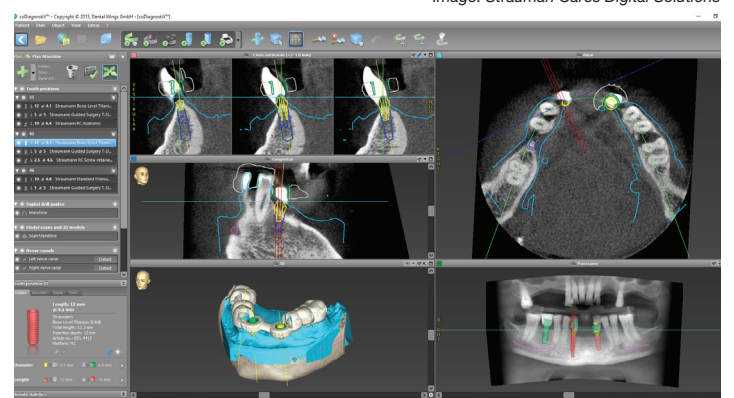
Taking this a step further, there are even solutions now available on the market that better connect the practice workflow with that of the laboratory. The digital revolution has done much in the way of communication between different members of the team, particularly when they are operating from different geographical locations. But more than this, the technologies themselves link together in a way that enables the technician to be involved from the very start of a case, from initial diagnostics, to intra oral scanning to the CAD process, milling or 3D printing,

right through to the fit of the restoration or appliance in the patient's mouth.

All this enables a lab to deliver an outstanding service to its clients without making life harder for the technical team, ultimately improving the patient experience as well. The enhanced reputation that comes with such a lab service also encourages referrals and additional revenue, so there is a lot to be said for comprehensive technologies that improve the quality of products fabricated.

To find out more about the various modular solutions available in dentistry right now, be sure to take a stroll around the 100-strong trade exhibition at DTS!

Image: Strauman Cares Digital Solutions



Virtual dentistry

Despite dentistry being a very practical profession, there has been a rise in the use of virtual tools in recent years. In the lab, technicians use digital software to virtually plan and design all manner of restorations and appliances, with technologies even capable of showing what those products will look like in the patient's mouth. The same equipment can be used to check function and occlusion as well, ensuring the very highest standard of product when it's physically fabricated and excellent precision of fit first time.

The trade is also incorporating virtual realities to demonstrate how their latest solutions can be utilised for maximum effectiveness. The innovative headsets make use of what is becoming fairly mainstream technology, requiring just a smartphone and specially formatted video / app to take the wearer to a whole new world. In dentistry, this technology has been used to explain the workflow involved with brand new software programmes, milling machines and communication systems, often presenting the process in a much clearer way than can be conveyed just through conversation.

As these virtual reality systems are advanced, it is interesting to think of how else we might use them. Could they become more involved in professional training, providing the individual with a life-like simulation to increase understanding of a topic and improve information retention? Could they be used to educate patients and acquire more informed consent? Or to distract those with dental fears and anxieties (indeed early studies suggest they might)? In the lab, could they be a useful tool for mentoring or training new technicians? Or even as a communication device with collaborating dentists and the practice team? With technology developing at the current pace, such practices could become common throughout the dental lab community sooner than you might think!



REGISTER ONLINE FOR DTS 2017 TODAY! WWW.THE-DTS.CO.UK/PAPER

3 EASY WAYS TO REGISTER – FREE!

1

ONLINE:
WWW.THE-DTS.CO.UK/PAPER

2

EMAIL:
D.EARL@CLOSERSTILLMEDIA.COM

3

PHONE:
0207 348 5750



STRAUMANN® CARES® DIGITAL SOLUTIONS

THIS YEAR'S HEADLINE ACT.



TOUR 2016/2017



GET BACKSTAGE WITH OUR DIGITAL LINE-UP.

Amplify your potential with a synchronised digital workflow from Straumann CARES® Digital Solutions.

With Straumann CARES® Digital Solutions you have everything you need for every step of the treatment pathway.

TUNE
INTO

STRAUMANNDIGITALPERFORMANCE.CO.UK

- ▶ Case planning & guided surgery
- ▶ Digital impressions
- ▶ Lab scanners
- ▶ In-lab milling
- ▶ External milling
- ▶ Scan & shape



PICK UP OUR BUZZ

Find us
on stand
B10

straumann
simply doing more



dentaltechshow



Dental Technology Showcase



@dentaltechshow

2017 speakers include...



Phil Reddington
Owner and Head Technician,
Beever Dental Technology
Dental Lab in Leeds



Von Grow
Lab Owner,
Dark Horse Dental Studio



Carl Fenwick
Dental Technician and Ivoclar
Vivadent Lecturer



Chris Wibberley
Clinical Dental Technician and
Owner, CW Dentures



Craig Parker
Primley Park Dentistry



Dan Shaw
Maxillofacial and Orthodontic
Laboratory Manager,
Chesterfield Royal Hospital



James Green
Maxillofacial and Dental
Laboratory Manager,
Great Ormond Street Hospital



Andrea Johnson
Orthodontic and Maxillofacial
Laboratory Manager, Montegu
Hospital



Leslie Stevens
President and CEO,
Healthy Start / Ortho-Tain



Eugene Royzengurt
Dental Technician,
Apple Dental Laboratory L.L.C



Bill Marais
Dental Technician,
Disa Dental Studio, Inc.



Stephen Lusty
Director/Technician,
Stephen Lusty Dental
Laboratory Ltd



Johnathan Hughes
Hughes Dental



David Claridge
CAD/CAM Product Specialist



Jeffrey Lewis
Principal Lecturer,
Cardiff Metropolitan University
(CMU)



Nimrod Tal
Director,
NimroDENTAL Orthodontic
Laboratory



Paul Mallett
Maxillofacial Laboratory
Manager and Consultant
Maxillofacial Technologist



Shazan Qureshi
Co-Founder,
Knight Wolfe



Ashley Byrne
Owner,
Byrnes Dental lab



Steve Campbell
Nexus Dental Laboratory and
DLA President



Ashley Latter
Owner,
Ashley Latter Limited



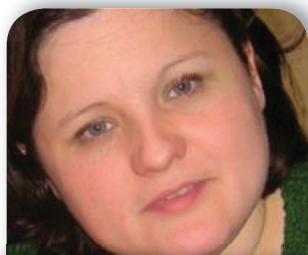
Aly Virani
Associate Dentist,
Clinical Research Fellow,
ADI Welsh Representative, ADI



**Francisco Marques
dos Santos**
Clinical Director, Marylebone
Implant Centre



Gregor Thomas
Head of Medical Department,
curasan AG



Margaret Neary
Tempdent Dental
Recruitment & Training



Nicky Benbow
Exclusives and Specialities Sales
Manager, Henry Schein Dental



Anil Shrestha
Clinical Director/Registered
Specialist in Prosthodontics,
Lister House ICED



Richard Brookshaw
Dip Imp Dent RCS Ed
(practice limited to implant
dentistry)



Nigel Reece
Managing Director,
Dental Design



Laura Edgar
Managing Director,
Aura Infection Control Ltd T/A
Quality Water Specialists



Dev Vasudeva
Co-Founder,
Knight Wolfe



John Clarke
Dental Market Specialist,
Wesleyan Bank



Keith Hunter
Professor of Head and Neck
Pathology, University of
Sheffield



Ricardo Soares
LDT Licentiate Dental Technician,
Prosthetic Dental Technician,
Zircon Art Dental Lab

**With a line-up
like this can you
really afford
not to be at
DTS 2017?**


DTS Conference Programme 2017

DTS LECTURE THEATRE

Designed for dental technicians, clinical dental technicians and laboratory owners, The DTS Lecture Theatre has this year been programmed by the Dental Technicians Guild (DTG). Not to be missed!

Supported by:



FRIDAY 12TH MAY	
09:30 - 09:45	Opening welcome by conference chairperson: Phil Reddington, RDT MDTA DTG, Owner and Head Technician, Beever Dental Technology Dental Lab in Leeds
11:30 - 12:30	Fabrication protocol for double structure implant retained removable prosthetics Eugene Royzengurt, Apple Dental Laboratory L.L.C
12:45 - 13:45	Open your digital workflow David Claridge, CAD/CAM Product Specialist Brought to you by: 
14:00 - 15:00	The DTG philosophy and platinum foil veneers Von Grow, DTG, Lab Owner, Dark Horse Dental Studio
16:00 - 17:00	Revolution, The challenge of copying the nature Ricardo Soares, Prosthetic Dental Technician, Zircon Art Dental Lab


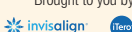
SATURDAY 13TH MAY	
09:30 - 09:45	Opening welcome by conference chairperson: Phil Reddington, RDT MDTA DTG, Owner and Head Technician, Beever Dental Technology Dental Lab in Leeds
09:45 - 10:45	One step back, ten steps forward Bill Marais, RDT, Dental Technician, Disa Dental Studio, Inc.
11:30 - 12:45	Session delivered by Carl Fenwick
13:30 - 14:30	Dealing with vertical preparations - protocols for the laboratory Stephen Lusty, RDT (DTG), Director/Technician, Stephen Lusty Dental Laboratory Ltd
15:00 - 16:00	Creating natural dental aesthetics Chris Wibberley, RDT (Dip CDT), Clinical Dental Technician and Owner, CW Dentures


DIGITAL & INNOVATION THEATRE

The Digital & Innovation Theatre brings together the latest innovations and new technologies available in the UK. A must attend for laboratory owners and technicians alike, this is your opportunity to learn from the experts and drive your lab/career forward.

Headline sponsor:



FRIDAY 12TH MAY	
11:30 - 12:30	Digital workflow - making open solution work for you Brought to you by: 
14:30 - 15:30	Digital impressions in your lab, the easiest way to start Ashley Byrne, Byrnes Dental lab Brought to you by: 

SATURDAY 13TH MAY	
10:00 - 11:00	Technology designed the way you work Michal Kawczynski, MSc(Material Eng); BTech (Dental Tech) & BSc(hons); N.Dip (Dental Tech), 3Shape A/S Dale Flanagan, MSc(Material Eng); BTech (Dental Tech) & BSc(hons); N.Dip (Dental Tech), 3Shape A/S Brought to you by: 
11:45 - 12:45	Digital impressions in your lab, the easiest way to start Steve Campbell, Nexus Dental Laboratory Brought to you by: 
13:40 - 14:40	New digital applications and materials for RPDs: Shifting the paradigm Jonathan Hughes, CDT, Hughes Dental and Craig Parker, BDS, Primley Park Dentistry Brought to you by: 
14:55 - 15:55	Digital workflow - making open solution work for you Brought to you by: 

OTA SEMINARS & CDT CONFERENCE








Building on the already successful OTA Seminars, the orthodontic technician's stream will cover everything from Cleft Lip and Palate to client reviews, making this unique opportunity unmissable for Orthodontic Technician's. The CDT conference is set to provide the best UK based education and training for Clinical Dental Technicians. A must for any CDT.





Supported by:



Supported by:



FRIDAY 12TH MAY	
09:30 - 10:15	Education: are we virtually there? Jeffrey Lewis, MSc, Principal Lecturer, Cardiff Metropolitan University (CMU) 
10:30 - 11:15	Session delivered by Health Education England Kathryn Marshall, MSc (Kent) Cert PDC Dip DHE RDN
11:30 - 12:15	An overview of appliances for post buccinator flap trauma prevention James Green, Maxillofacial and Dental Laboratory Manager, Great Ormond Street Hospital for Children NHS Foundation Trust / North Thames Cleft Centre 
12:30 - 13:15	Discover the 8 steps to a perfect consultation so that you hear a YES more often ethically Ashley Latter, Owner, Ashley Latter Limited 
13:30 - 14:15	The NimrodAligner: a new orthodontic appliance Nimrod Tal, Director, NimroDENTAL Orthodontic Laboratory 
14:30 - 15:15	Oral cancer: what you need to know Professor Keith Hunter, Professor of Head and Neck Pathology, University of Sheffield 
15:30 - 16:15	Weird and wonderful appliance design Andrea Johnson, BSC (hons) FOTA MDTA, Orthodontic and Maxillofacial Laboratory Manager, Montegu Hospital 
16:45 - 17:15	BACDT Awards 

SATURDAY 13TH MAY	
10:00 - 10:45	How to wash your hands: The interactive experience Paul Mallett, BSc (Hons) FOTA MIMPT FDTA, Maxillofacial Laboratory Manager and Consultant Maxillofacial Technologist, University Hospitals of Morecambe Bay NHS Trust 
11:00 - 11:45	A digital denture journey Roy Davis, Oakview Restorations 
12:00 - 12:45	Sleep disordered breathing: Symptoms, root causes and treatment for paediatric patients Leslie Stevens, President and CEO, Healthy Start / Ortho-Tain 
13:00 - 13:45	Discover 7 little known secrets to creating a successful prosperous CDT business Ashley Latter, Owner, Ashley Latter Limited 
14:00 - 14:45	Herbst appliance – application and manufacture Daniel Shaw, Maxillofacial Laboratory Manager, Maxillofacial Department, Chesterfield Royal Hospital 



DTS Conference Programme 2017

BUSINESS SKILLS WORKSHOPS

Delivered by industry experts, all sessions will be business themed, and will cover a variety of topics including effective communication, brand development, managing your team and attracting new business.



FRIDAY 12TH MAY		
11:40 - 12:10	Cutting edge 'online' marketing strategies that work Nigel Reece, BSc(Hons) DipM, Managing Director, Dental Design	Brought to you by:
12:20 - 13:20	Reduce your tax by up to 80-% - legally! Dev Vasudeva, Co-Founder, Knight Wolffe Shazan Qureshi, Co-Founder, Knight Wolffe	Brought to you by:
16:00 - 16:30	Financing growth – 5 things about commercial finance your bank doesn't want you to know John Clarke, Dental Market Specialist, Wesleyan Bank	Brought to you by:

SATURDAY 13TH MAY		
09:50 - 10:20	Financing growth – 5 things about commercial finance your bank doesn't want you to know John Clarke, Dental Market Specialist, Wesleyan Bank	Brought to you by:
11:50 - 12:20	Cutting edge 'online' marketing strategies that work Nigel Reece, BSc(Hons) DipM, Managing Director, Dental Design	Brought to you by:
14:20 - 14:50	Reduce your tax by up to 80-% - legally! Dev Vasudeva, Co-Founder, Knight Wolffe Shazan Qureshi, Co-Founder, Knight Wolffe	Brought to you by:

ADI IMPLANT THEATRE

This is a must attend theatre for DTS delegates, with not-to-be missed sessions covering - bone regeneration versus bone substitute, to the basics of dental implantology and everything you need to know about digital implant dentistry and how to use it. A line-up too good to miss.

Supported by:



FRIDAY 12TH MAY		
11:30 - 12:30	Immediate implant placement in the aesthetic area – a simple protocol for everyday practice Dr Francisco Marques dos Santos, LMD. ISCSS (PT), DiplImpDent.NYUCD (USA), Clinical Director, Marylebone Implant Centre	Brought to you by:
13:50 - 14:50	Mastering complicated surgical cases Richard Brookshaw, BDS MMedSci (oral surgery), Dip Imp Dent RCS Ed (practice limited to implant dentistry)	Brought to you by:
15:15 - 16:15	Bone regeneration versus bone substitute - an update to the state of the art Dr Gregor Thomas, MD DDS MSc PhD, Head of Medical Department, curasan AG	Brought to you by:

SATURDAY 13TH MAY		
10:00 - 11:00	Starting a career in dental implants Dr Aly Virani, BDS (Hons) MJDF RCS (Eng), Associate Dentist, Clinical Research Fellow, ADI Welsh Representative, ADI	Brought to you by:
11:30 - 12:30	Go slim – an alternative approach to manage the atrophic ridge using mini-dental implants Anil Shrestha, BDS BSc(Hons) DGD(UK) MGDS RCS(Eng) MSc(Lond) MFDS RCSEd MFDS RCPS(Glas) FFGDP RCS (Eng), Clinical Director/Registered Specialist in Prosthodontics, Lister House ICED	Brought to you by:
13:15 - 14:15	Immediate implant placement in the aesthetic area – a simple protocol for everyday practice Dr Francisco Marques dos Santos, LMD. ISCSS (PT), DiplImpDent.NYUCD (USA), Clinical Director, Marylebone Implant Centre	Brought to you by:

CORE CPD THEATRE

Covering all the major CPD topics, industry experts will run presentations covering core areas every Dental Technician should include in their CPD training.

Supported by:



FRIDAY 12TH MAY		
09:30 - 10:15	Taking control!– DUWL management Laura Edgar, Managing Director, Aura Infection Control Ltd T/A Quality Water Specialists	Brought to you by:
11:30 - 12:15	Medical emergencies Margaret Neary, RDN Cert Ed, Tempdent Dental Recruitment & Training	Brought to you by:
14:45 - 15:30	Dental infection control and decontamination Peter Gibbons, Exclusives and Specialities Sales Manager, Henry Schein Dental	Brought to you by:
16:45 - 17:30	Good complaint management Dr Amit Rai, BDS LLM, General Dental Practitioner, CODE	Brought to you by:

SATURDAY 13TH MAY		
09:30 - 10:15	Radiography and radiation protection Dr Niall O'Neill, Guy's & St Thomas' NHS Foundation Trust	
10:30 - 11:15	Mouth cancer: Let's talk about it Dr Chet Trivedy, BDS FDS RCS (Eng) MBBS PhD FRCEM, Hon Associate Clinical Professor, Warwick Medical School and Trustee Oral Health Foundation	Supported by:
11:30 - 12:15	Dental infection control and decontamination Peter Gibbons, Exclusives and Specialities Sales Manager, Henry Schein Dental	Brought to you by:
13:30 - 14:15	Dental legal and ethical issues Dr Amit Rai, BDS LLM, General Dental Practitioner, CODE	Brought to you by:
15:30 - 16:15	Medical emergencies Margaret Neary, RDN Cert Ed, Tempdent Dental Recruitment & Training	Brought to you by:

Time Savings, Efficiency, and Patient Comfort with the iTero Element[®] restorative workflow.

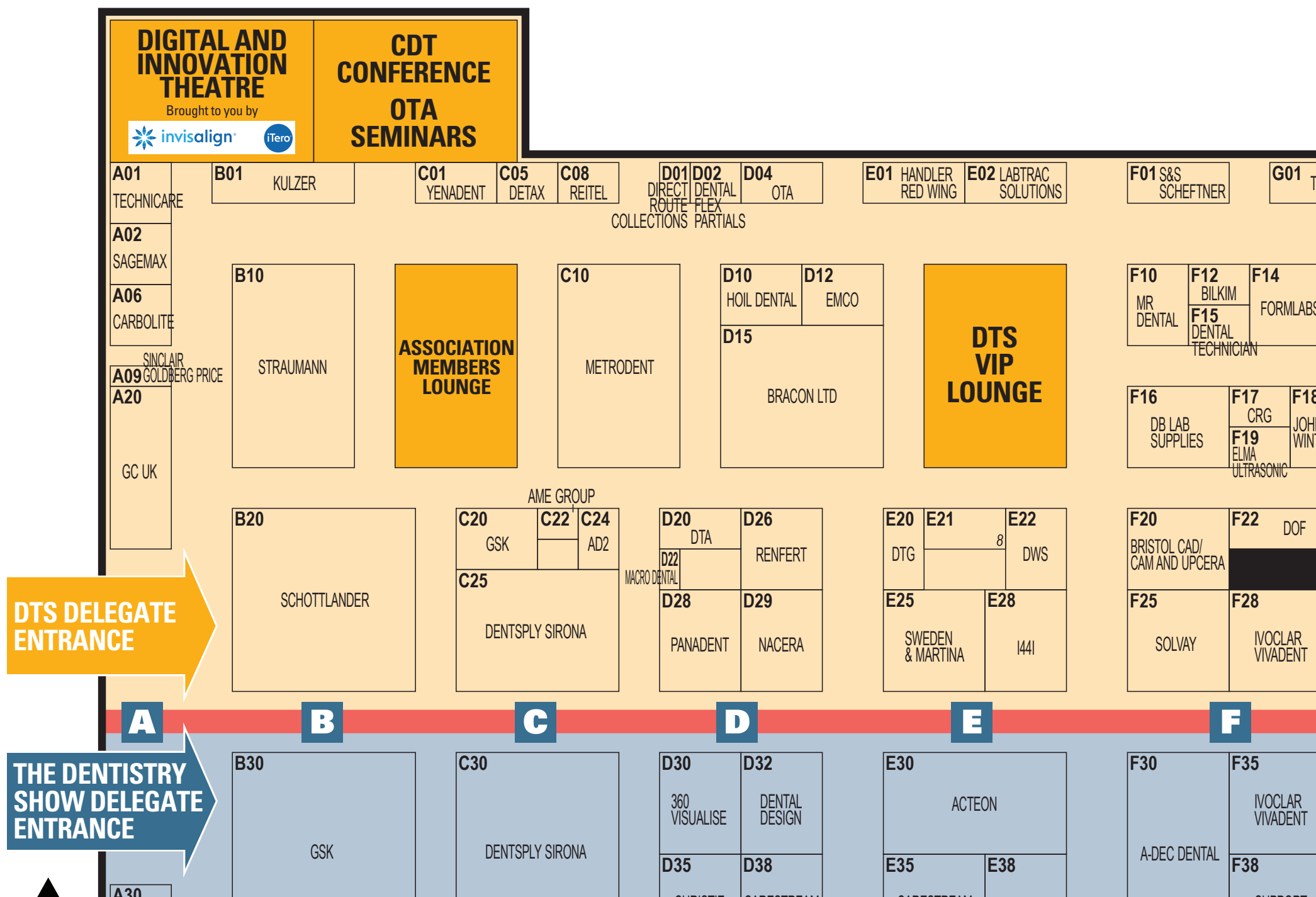
Export iTero restorative scans in open STL format to leading laboratory CAD/CAM systems for creation of crowns, bridges, implant custom abutments, veneers, inlays, and onlays.
Discover our certified abutment workflows with Straumann, Dentsply Atlantis and ELOS NobelProcera, and chairside milling with Exocad Chairside Design and E4D Planmeca.

Visit us at The Dentistry Show!
12 – 13 May 2017
Stand H55

For more information please contact 0800 9171643 or visit www.iTero.com.

Align Technology: BV, Arlandweg 161, 1043 HS Amsterdam, The Netherlands | INVISALIGN, CLINCHECK, ITERO, ITERO ELEMENT, ORTHOCAD, iRECORD, and iCAST among others, are trademarks and/or service marks of Align Technology, Inc. or one of its subsidiaries or affiliated companies and may be registered in the U.S. and/or other countries. | © 2017 Align Technology BV | B10226-00 Rev A

PUTTING YOU AT THE HEART OF THE MOST IMPORTANT EVENT FOR UK DENTAL TECHNICIANS AND LAB OWNERS



WHAT ELSE IS ON?

BACDT AWARDS

The DTS team are extremely excited to be hosting the BACDT Awards for 2017 Friday 12th May. We would like to wish all those shortlisted the best of luck, and look forward to meeting them all on the night.



BRACON

Bracon will be launching the ground breaking new Asiga Max 3D printer, taking your digital set up to the next level, displayed alongside their exclusive CATO benching range.

Visit stand D15 to find out more.



VIP LOUNGE

The VIP lounge offers an exclusive area to have meetings, catch up with colleagues and enjoy complimentary tea, coffee and sandwiches.



ON-STAND DEMONSTRATIONS

On stand demonstrations by experts will guide delegates through practical applications for the latest products, and help delegates understand how they could put them into practice in their labs. Highlights Include:



STAND C25

FRIDAY 12TH MAY

14:00 - 14:50 Go digital - CEREC discovery workshop
Dr Karen Gangotra



SATURDAY 13TH MAY

13:00 - 13:50 Digital implant workflow with CEREC / TiBase
Dr Karen Gangotra



SECURE YOUR FREE PASS TODAY!

1 ONLINE:
WWW.THE-DTS.CO.UK/PAPER

2 EMAIL:
D.EARL@CLOSERSTILLMEDIA.CO



dentaltechshow

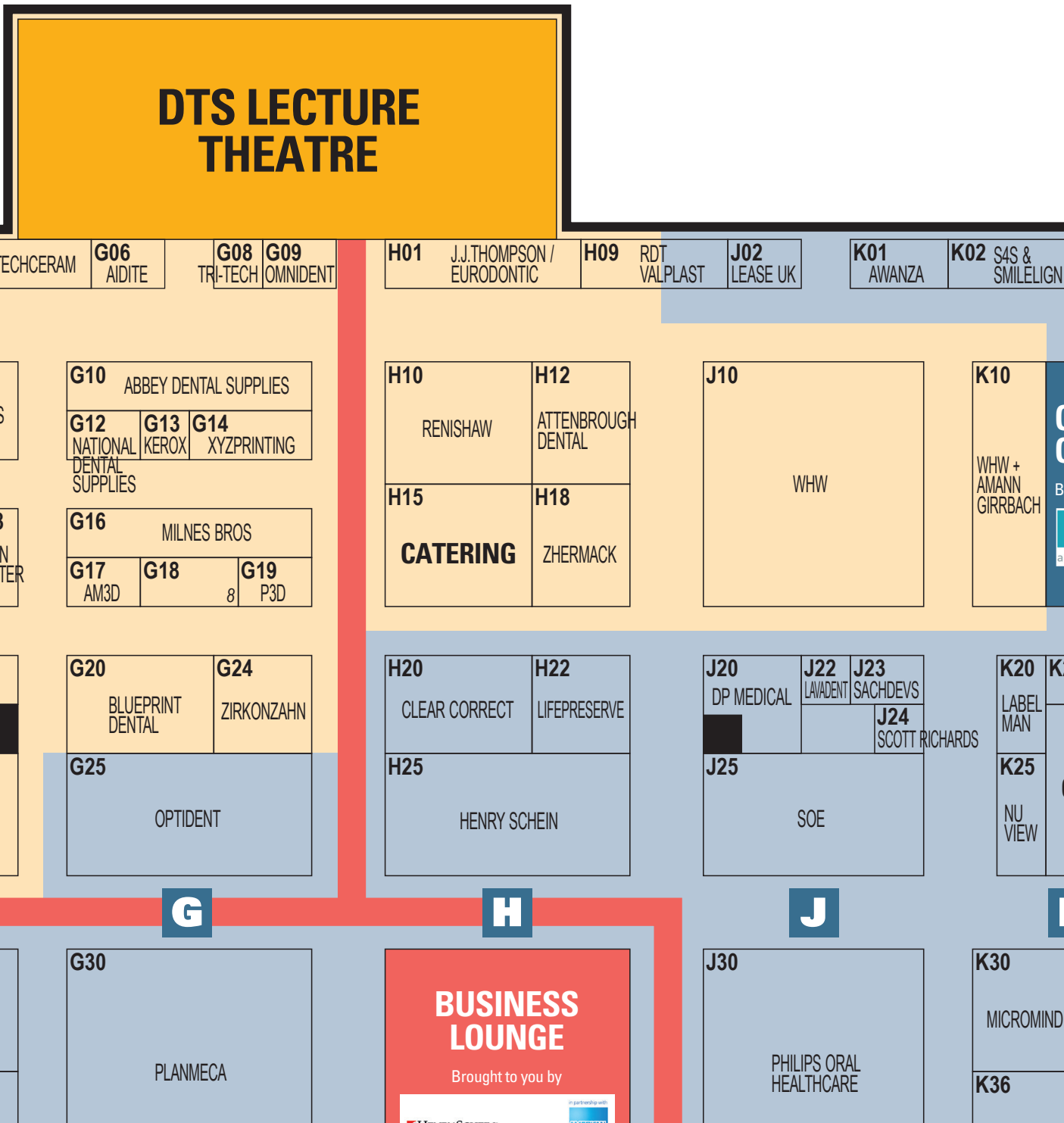


Dental Technology Showcase



@dentaltechshow

Exhibitor list



NOT TO SCALE.CORRECT AT TIME OF PRINTING.

EVENT PARTNERS



COMPANY NAME	STAND	NEW	DW
Abbey Dental Supplies	G10		
AD2	C24	✓	DW
Aidite High-Technical Ceramic Co. Ltd	G06		
AM3D	G17	✓	
AME Group	C22	✓	
Attenborough Dental	H12		
Bilkim	F12	✓	
Blueprint Dental	G20		
Bracon Limited	D15		
Bristol CAD/CAM and Upcera	F20	✓	
Carbolite Gero	A06		
DB Lab Supplies	F16		
Dental Flex Partial Ltd.	D02	✓	
Dentsply Sirona	C25		
Detax	C05		DW
Direct Route Collections	D01	✓	
DOF UK	F22	✓	
DWS SRL	E22	✓	DW
Elma Schmidbauer GmbH	F19	✓	
Emco	D12	✓	
Eurodonic	H01		
Formlabs	F14	✓	
GC UK Ltd	A20		
GSK	C20		
Handler Red Wing International	E01	✓	DW
Henry Schein	H25		
HOIL Dental	D10		
Ivoclar Vivadent	F28		
John Winter & Co Ltd	F18		
Kerox Dental	G13	✓	DW
Kulzer	B01		
Labtrac Solutions	E02		
Macro Dent (INDIA)	D22	✓	
Metrodent	C10		
Milnes Bros	G16		
MR. Dental	F10		DW
Nacera® CAD CAM Ceramic Materials & Supplies	D29	✓	
National Dental Supplies	G12	✓	
Omnident	G09		
Panadent Ltd	D28		
RDT Technology	H09		
Reitel	C08		DW
RENFERT	D26		
Renishaw	H10		
S&S Scheftner GmbH	F01		
Sagemax	A02		
Schottlander	B20		
Sinclair Goldberg Price Limited	A09	✓	
Solvay	F25	✓	
Straumann	B10		
Sweden & Martina	E25	✓	
Techceram	G01		
Technicare	A01		
Tri-Tech 3D	G08		
WHW	J10		DW
WHW + Amann Girrigh	K10	✓	DW
XYZprinting	G14	✓	
Yenadent	C01		
ZHERMACK	H18	✓	
Zirkonzan	G24		

✓ = New exhibitor DW = Distributors wanted



dentaltechshow



Dental Technology Showcase



@dentaltechshow

Exhibitor Product Categories

Furniture & Planning

John Winter & Co Ltd
WHW + Amann Girrback

3D Printing

AME Group
Bracon Limited
DWS SRL
Formlabs
Kulzer
John Winter & Co Ltd
Metrodent
Tri-Tech 3D
Tri-Tech 3D
Emco
Henry Schein
WHW + Amann Girrback

Abrasive / Rotary Tools

Metrodent
Technicare

Anti-snoring Appliances

Metrodent

Articulators & Accessories

Eurodentic
Metrodent

Associations / Charities / Organisations

DLA

Bench Lights

Metrodent

Benches

John Winter & Co Ltd
WHW + Amann Girrback

Brushes

Metrodent
RENFERT
Technicare
Henry Schein

CAD / CAM

Blueprint Dental
Kulzer
HOIL Dental
Metrodent
Straumann
Sweden & Martina
Yenadent
Zirkonzan
Kerox Dental
Kerox Dental
Henry Schein
WHW + Amann Girrback

Casting Apparatus

Metrodent

Ceramics

Metrodent
Zirkonzan

Cobalt Chromium

Metrodent
WHW
WHW
Zirkonzan

Composites

Metrodent
Henry Schein

Compressors

Eurodentic

CPD Education / Training

Straumann
Henry Schein

Crown & Bridge Appliances

Metrodent
Zirkonzan
Henry Schein

Denture Base Materials

Kulzer
Metrodent
MR. Dental
RDT Technology
Schottlander
WHW

Denture Marking

GSK
Metrodent

De-waxing Equipment

Metrodent

Duplicating Machines

Metrodent

Dust & Fume Extractors

Metrodent
RENFERT

Electro-plating / Polishing

Metrodent

Financial Services

Sinclair Goldberg Price Limited

Flasks & Dental Presses

Handler Red Wing International
Metrodent

Furnaces

Metrodent
Milnes Bros
Kerox Dental

Handpieces

Handler Red Wing International
Metrodent
Sweden & Martina
Henry Schein

Implants

Dentsply Sirona
HOIL Dental
Straumann
Sweden & Martina
Henry Schein

Insurance

Henry Schein

Investments

Metrodent
Schottlander
Henry Schein

IT & Websites

Labtrac Solutions

Laboratory Instruments & Tools

Elma Schmidbauer GmbH
Eurodentic
Metrodent
MR. Dental
Reitel
Henry Schein

Laboratory Motors

Metrodent

Milnes Bros
Henry Schein

Laboratory Software

Labtrac Solutions
Straumann
Henry Schein
WHW + Amann Girrback

Laboratory Sundries

Detax
John Winter & Co Ltd
Metrodent
MR. Dental
WHW
Henry Schein

Laboratory Surveyors

Metrodent

Lathes Polishing

Handler Red Wing International
Metrodent

Loupes

Metrodent
Evident
ExamVision

Metals (Non Precious)

Dentsply Sirona
Metrodent
Technicare

Milling Equipment

Dentsply Sirona
HOIL Dental
Metrodent
Straumann
Zirkonzan
Emco
Kerox Dental
Henry Schein
WHW + Amann Girrback

Model Trays

Metrodent
Henry Schein

Mouthguard Equipment & Materials

Eurodentic
Metrodent
Milnes Bros
WHW

Orthodontic Products

Eurodentic
Metrodent
OTA

Pharmaceuticals

GSK

Plaster Mixers & Silos

Metrodent

Plasters

John Winter & Co Ltd
Metrodent

Polishing Products

Metrodent

Porcelain

Metrodent
Schottlander
Technicare

Precious Metal Recovery

Metrodent

Precision Attachments

Metrodent

Processing Apparatus

Metrodent

Prosthetics

Dentsply Sirona
GSK
GSK
Kulzer
HOIL Dental
Metrodent
MR. Dental
Schottlander
Sweden & Martina
Kerox Dental

Sand Blasters

Metrodent
RENFERT
Danville
Evident

Teeth

Dentsply Sirona
GSK
GSK
Kulzer
John Winter & Co Ltd
Metrodent
MR. Dental
Schottlander
Henry Schein

Trimmers

HANDLER RED WING INTERNATIONAL
Metrodent
Milnes Bros
RENFERT

Ultrasonics

Elma Schmidbauer GmbH
Metrodent
Henry Schein

UV Light Boxes

Metrodent
Milnes Bros

Vacuum Pumps

Metrodent
Henry Schein

Vibrators

HANDLER RED WING INTERNATIONAL
Metrodent

Wax

Metrodent
RENFERT
Technicare
WHW
WHW
Kerox Dental

Welders & Soldering Units

Metrodent
Sweden & Martina



Abbey Dental Supplies

Incorporating Extradent at the start of the year, we are a family business covering the UK and Ireland. We are proud to add the very popular Yamahachi New Ace 2 layered teeth, Crown NS 3 layered teeth and the Beautiful PX composite teeth. Also bringing on board the Vitallium range of chrome alloys and their related products.

We are proud to still be promoting Smileline products and will be demonstrating the new Smilelite MPD.

Our increasingly popular Twiny Material will also be on display with live demonstrations on how to achieve amazingly lifelike custom gum work with the extremely talented Technician, Mr Roy Davis. please be free to come and watch.

We will again be promoting our best seller for pressable ceramics – J P Vest, Please ask for a free sample.

We pride ourselves in service and availability and welcome any interest in our ever-increasing range of products. Please visit us



at stand G10 where we will be pleased to discuss your requirements.

We really look forward to welcoming you onto our stand.

From the Abbey Team.

**BEST OF ALL,
a 10% discount on all orders
placed during the show.**

DTS 2017 FRIDAY NIGHT SOCIAL



**JOIN US FOR A FUN-FILLED EVENING ON FRIDAY
12TH MAY, 5.30PM-9.30PM AT WETHERSPOONS
(NEXT TO THE TOUTE SUITE).**

DELEGATES & EXHIBITORS WELCOME

After a busy first day at The Dental Technology Showcase, bring the team, clients and friends along to enjoy a buffet dinner, plenty of drinks and a friendly atmosphere.

Tickets include a **hot meal** and **complimentary drinks**.

**£20
PER TICKET
(+VAT)
OR £90 FOR
5 TICKETS**

**TICKETS ARE LIMITED
SO BOOK YOURS TODAY!**

Call Daniel Earl on 02476 719692 or email
dts-pubtickets@closerstillmedia.com to book your tickets now!

XYZPRINTING MATERIALS FOR DENTAL PRINTING

UV Curing Chamber
£ 329,-
including VAT

GENERAL PURPOSE RESIN
ACCURATE DENTAL MODEL MATERIAL FOR PRINTING DENTAL MODELS DIRECTLY FROM SCAN DATA.

CASTABLE RESIN
SHORTENING THE MANUFACTURING PROCEDURE TO PRODUCE QUICK, ACCURATE, AND DEPENDABLE CASTING DESIGNS.

BIOMEDICAL RESIN
THE MATERIAL IS A BIOCOMPATIBLE RESIN, WITH FDA CLASS I LISTED AND IS RESISTANT TO DISINFECTANTS, MAKING IT SUITABLE FOR CREATING NON-INVASIVE DEVICES OF SHORT-TERM EXPOSURE TO HUMAN SKIN/TEXTURES.

Nobel Superfine DLP
£ 2299,-
including VAT

Nobel 1.0A SLA
£ 1699,-
including VAT

XYZprinting Netherlands B.V.

E-mail ►► infoeu@xyzprinting.com
URL ►► <http://eu.xyzprinting.com>

Facebook

XYZprinting

DTS 2017 & WHW

Honoured was an understatement when it was announced that for the second year running we had been awarded "DLA Trade Company of the Year" for 2016 and we believe that the DTS played a pivotal part of this. It also allows us to catch up with friends old and new.



The DTS 2017 will show you our continued "evolution", showcasing a new and innovative stand design but still giving you what you hopefully want: demonstrations, products on display to try and knowledgeable staff to interrogate!

DTS will be an opportunity to see the Amann Girrbach DNA range in the flesh for the first time. In addition we will be launching over 30 new products and agencies from around the globe.

Most excitingly, Centri, our own manufactured range will welcome some new and original additions to the family.

After a year in development we are delighted to be launching Nano Rock. Nano Rock is the multifaceted liquid die stone that offers untold colour combinations to suit your needs.

Using the material couldn't be simpler, supplied as a 50/50 mix in either natural or white with the option of 7 Nano Rock "primary colours" to mix with the white to your heart's content.

Nano Rock is incredibly lightweight compared to traditional stone, it can withstand rough handling and is abrasion resistant. It does not shrink and has outstanding dimensional stability making it suitable for an abundance of applications. Nano Rock is incredibly easy, precise and clean to trim and segment and we are delighted to launch it at DTS 2017.

Another innovation, the Vertysystem, will also hold a prime spot on this year's stand. The inventors and owners of the Vertysystem will be on hand to offer advice and demonstrations on this particularly inventive system.

Using the same base and the same position of the axis, the Verty Furbo can become a small flask, a big flask, a composites flask, a verticulator or parallelometer by simply changing the cover and axis.

Thanks to conclusive working protocols, dedicated precision engineered equipment and about 140 specifically designed products, the Vertysystem offers a complete "Working System" that simplifies production, improves quality and guarantees continuity.

The system offers a solution for almost any appliance including implant bridges, full and partial dentures, temporaries, composites and stamped porcelain.

In addition we will be doing live demonstrations of the ceraMotion® One Touch system. Launching a very novel and simple trial kit.

Hopefully we will see you on stands J10 & K10, please come by and say hello.

Please contact us on 0800 0092 444 for more information

REGISTER ONLINE FOR DTS 2017 TODAY! WWW.THE-DTS.CO.UK/PAPER

Print IT 3D Ltd

Print IT 3D Ltd is a leading provider of 3D printing solutions for the UK & Ireland. As an authorized re-seller for 3D Systems we are able to provide the full portfolio of products and services from the company that invented 3D printing.

By working with the best equipment in the industry, we are able to bring you the highest quality 3D printing solutions available, whatever your requirements.

We're passionate about 3D Printing, we understand the technology. Let us help you understand it too!

CONTACT US +44 1656 724299

Visit us on stand G19



DB Lab Supplies

DB Lab Supplies are purveyors of the finest Orthodontic laboratory products - Leone, Thermoforming - Iconic, CAD/CAM - Whitepeaks, Non precious alloys - Atomium, Articulators - SAM as well as many other successful laboratory products including the essential Rhino Rock modelling resin and Iconic Pro Reservoir LC.

New to the DTS this year is VIPI Trilux multi-layer PMMA. VIPI Trilux is a millable high quality innovative material used for both temporary and long term restorations. This excellent product is composed of acrylic resins with raw materials of nanotechnology OMC (Organically Modified Ceramics). VIPI Trilux has 3 layers giving the translucency and shade a near natural finish. Available in 13 different shades and thicknesses from 12mm to 25mm.

Visit us on stand F16



Dental Flex Partial

Dental Flex Partial is bringing onto the UK market the most exclusive and advance products for Flexible Partial.



Dental Flex Partial
making people smile again

Injection Fast® is the most advance, most powerful and the only injection system in the world with Double Flask Technology®. The system Allows to inject any thermoplastic materials developed in a special double flask, reducing costs and time, while Increasing production. The machine is designed and built in Italy by Italian Flex Dental, a worldwide renowned name for flexible partials. The system comes with 4-year warranty.

Viva Flex Partial LF® is a high performance polyamide used for the development for flexible partials. The uniqueness of the product is the ultra-compact surface to Achieve That allow the user to "mirror finishing" like a conventional resin or acrylic.

It does not absorb neither discolours therefore, no bad odours, no breakages.

Come and see for yourself and grab the special DTS 'offer.

Visit us on stand D02



Delegate satisfaction guarantee!

HERE'S WHAT YOU HAD TO SAY...

We're here to spend. This year we are looking at denture products, scanning, and any new machinery. We've also signed up for a few training courses. The conference programme is a great education platform, and there's been interesting CAD/CAM sessions. This is the only show we attend as it ticks all the boxes for keeping up-to-date.

Michael Doel, Lab Owner, Michael Doel Lab & Tony Oswin, Dental Lab Owner, Unique Dentures

We're seasoned in the industry and we're not easy to impress but this is truly the best exhibition for the dental tech sector. The content is excellent, particularly in CAD/CAM- which we're looking at making decisions on. We came here specifically to look at new products and there's more than we can get around to be honest!

Robin Kerwick & Steve Rogers, Owners, Kerwick and Rogers Dental Laboratory



The CAD/CAM sessions have been very interesting for us, and the talks have discussed some great topics. We have learnt about new techniques and products. We'd definitely recommend the event and we'll be back next year.

Jamie Sawdon, Dental Technician, PDS & Thomas Kwok, Dental Technician, Simpler Dental Ceramics

I come here to see the new products on the market and to meet up with people from the industry. I really like the merger between the dentistry and technology aspects as it's really relevant to my role.

Stephen Wears, Clinical Dental Technician, Your Smile Denture Clinic



Dealing with vertical preps

Stephen Lusty will be one of many renowned speakers at The Dental Technology Showcase (DTS) this May. He will be presenting a session in the DTS Lecture Theatre entitled “Dealing with vertical preparations – protocols for the laboratory”.

Stephen qualified in Cape Town, South Africa in 1997 and moved to London after working there for two years. Having completed various further education courses, Stephen currently runs his own bespoke dental laboratory in Cornwall and works with some of the country's top aesthetic dentists.



Steven Lusty

About his session, Stephen says:

“Vertical preparations are being used more and more and there are very few resources available on how to deal with these cases from a lab perspective. What's more, zirconia is a material that is becoming more trusted in the dental industry so it is important for technicians to educate themselves on correct procedures for dealing with this popular material.”

Stephen's lecture is designed to outline a standardised protocol for dealing with the increased use of vertical preparations in the practice. Delegates will be shown how to best design restorations, covering the whole workflow from making of the models to delivery of the completed products. Stephen continues:

“With the growing use of zirconia in dentistry, especially with widespread in-house milling, I will take delegates through a logical and systematic approach to working with this material, particularly when it comes to zero margin cases. This approach will give dental technicians an insight into how to achieve consistent and highly aesthetic results.”

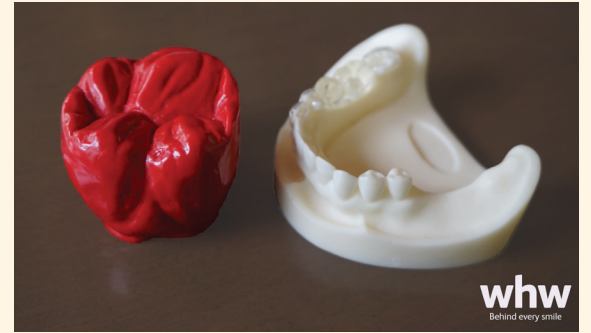
Like many of the speakers in this year's DTS Lecture Theatre, Stephen is also a member of the Dental Technicians Guild (DTG). The DTG is a group of dental technicians and dentists, who come together to share ideas and knowledge for the improvement of industry standards. They believe in hand-made, aesthetic restorations and aim to raise awareness of just what technicians worldwide can do.

“I think it is fantastic that the DTG is becoming involved in meetings in the UK,” comments Stephen. “The organisation exists primarily to help technicians improve themselves, so it seems a great fit to be present at a show like DTS.”

Chaired by Phil Reddington, Stephen will join an exceptional speaker line-up in the DTS Lecture Theatre including Von Grow (Founder of the DTG), Carl Fenwick, Chris Wibberely, Bill Marais, Ian Smith, Eugene Royzengurt and Simon Newbold. Further learning opportunities will be available in the Digital & Innovation Theatre and ADI Implant Theatre, as well as throughout the 100-strong lab-dedicated trade exhibition. Demonstrating the latest and greatest products, technologies and materials on the UK market, the array of dental manufacturers and suppliers will be more than happy to provide information, live demonstrations and fantastic deals to suit every lab.



NANO ROCK



After a year in development we are delighted to be launching Nano Rock at DTS 2017. Nano Rock is the multifaceted liquid stone that offers untold colour combinations to suit your needs.

Using the material couldn't be simpler, supplied as a 50/50 mix in either natural or white with the option of 7 Nano Rock “primary colours” to mix with the white to your heart's content.

Nano Rock is incredibly lightweight compared to traditional stone, it can withstand rough handling and is abrasion resistant. It does not shrink and has outstanding dimensional stability making it suitable for an abundance of applications.

Nano Rock is incredibly easy, precise and clean to trim and segment.

A WHW innovation.

Everything a lab needs
to work better
and more intelligently

Find out how on stand G20

Dentistry Show and Dental Technology Showcase

BLUEPRINT DENTAL

Better products. Better dentistry.

www.blueprintdental.co.uk



dentaltechshow



Dental Technology Showcase



@dentaltechshow



liquid die stone

- ▶ Nano Rock is incredibly lightweight compared to traditional stone
- ▶ So strong it can withstand rough handling and long term storage, ideal for orthodontic study casts and thin sections
- ▶ Nano Rock is abrasion resistant unlike stone casts, making it ideal for teaching, opposing casts and chrome models
- ▶ Nano Rock does not shrink and has outstanding dimensional stability
- ▶ Incredibly easy, precise & clean to trim and segment
- ▶ Infinite colour variations can be achieved, with minimal effort
- ▶ Easy to use and produces an attractive glossy surface when duplicated in silicone
- ▶ A WHW innovation

90NRSKN	Nano Rock 1kg + 1kg Natural	27.95
90NRSKW	Nano Rock 1kg + 1kg White	27.95
90NRRB	Nano Rock 1kg Blue	16.95
90NRBL	Nano Rock 1kg Black	16.95
90NRGN	Nano Rock 1kg Green	16.95
90NRYW	Nano Rock 1kg Yellow	16.95
90NRCB	Nano Rock 1kg Brown	16.95
90NRTN	Nano Rock 1kg Tan	16.95
90NRRD	Nano Rock 1kg Red	16.95
90NRCAT	Nano Rock 1kg Catalyst (B)	14.95

Buy 2 packs of the white starter kit and get a **1kg** colour **FREE**

SALES FREEPHONE: 0800 009 2444

Prices are subject to VAT & Carriage.
Offers are valid from May 1st to July 31st 2017

Launching June 1st



whw
Behind every smile