

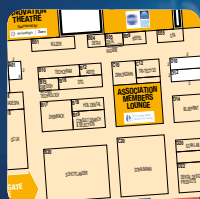
**GDPR - MOVE
TOWARDS
COMPLIANCE**

SEE PAGE 3

compliance company compliance
supervisory authority in prep
process
DPO general
law
GDPR
EU protection data
personal assessed european union
secure information
bring system

**EXHIBITOR
LIST &
FLOORPLAN**

SEE PAGES 10 & 11



Dental
Technology
Showcase
2018
dts
www.the-dts.co.uk
18th & 19th May 2018
NEC Birmingham

**PRE-
SHOW
EDITION**

In partnership with



Promoting British
Dental Technology



www.the-dts.co.uk

#DTS18



@dentaltechshow



Dental Technology Showcase



Dental Tech Show

THE ABC OF DTS 2018

For learning, networking, discovery and inspiration, The Dental Technology Showcase (DTS) 2018 is *the* place to be this May. With something for all dental technicians, clinical dental technicians, orthodontic technicians and laboratory owners, it's not an event you want to miss.

Here's an ABC guide to DTS 2018...

Acquire knowledge with access to an array of cutting-edge lectures. Between the DTS Lecture Theatre (programmed by the Dental Technicians Guild - DTG), the CDT Conference and the OTA Seminars, there will be education galore for all members of the dental lab community. This also means that you can gain hours of verifiable CPD as you get started with the new enhanced CPD requirements coming into effect this year.



Ensuring the highest calibre of learning, the speaker line-up will include some of the biggest and well-known names in the global field, including:



Mark Bladen



Stefan Picha



Alexander Wilder



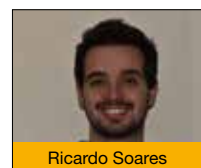
Dr Finlay Sutton



Andrea Johnson



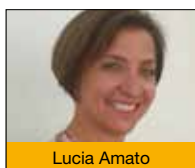
Janine Doughty



Ricardo Soares



Oliver Ambridge



Lucia Amato

The Digital & Innovation Theatre will also offer insight into the latest solutions on the market that are designed to improve daily life in the laboratory. Don't miss Marcus

Rickard providing clarity on the complex issues of GDPR compliance; Alexander DeClerck sharing his experience of the Celtra Press from Dentsply Sirona; or a panel session sponsored by Techceram considering the advancement of modern digital technologies.

Buy new technologies and equipment

The trade floor will be home to more than 100 lab-dedicated manufacturers and suppliers, enabling you to discover the very latest innovations in dentistry. Try out products for yourself, liaise with the experts, find out how new technologies work and see how the solutions on offer could benefit your team. You'll be able to make the most of fantastic show-only offers on an array of equipment, materials and services, ensuring you get maximum boom for your buck!

But there'll be so much more going on too...

You'll have the chance to watch the masters in action with live demonstrations from the DTG team on stand B16, so why not drop by to pick up some practical tips and inspirational ideas. The Straumann Digital Performance Roadshow Truck will also be on site, wowing delegates with its synchronised digital workflow solutions.

It's all about teamwork at DTS 2018



Dr Marc
Römer

Andreas
Leimbach

Dentist Dr Marc Römer and MDT Andreas Leimbach will discuss how it is possible to provide patients with invisible and highly aesthetic, removable dentures.

Dr Römer says:

"This concept is based on an efficient and reproducible workflow that includes CAD, 3D Printing, milling and the SLM Technique. The end result is completely based on craftsmanship skills of the dental team."

Andreas, who will be speaking the UK for the first time, comments:

"We will be talking about removable dentures and the logical and effective steps we follow to achieve the perfect result. I believe providing professional work that is customised according to each individual patient is the only way to separate your lab from mainstream digital technology labs."

About the teamwork required to achieve exceptional results with removable dentures, Andreas adds:

"Establishing an efficient workflow with the dentist helps the laboratory save time and money. Speaking alongside Dr Römer, we plan to show how we work together and how important it is to have a good communication between the dentist and dental technician. Good outcomes are not just about the technician's work – they're the result of teamwork."

"I hope delegates will take away the key points on how to build a strong workflow between the technician and the dentist. Most of all, we wish to share our passion for the work that we do and motivate others to be the best they can be."

"I have been involved with the DTG since 2013. The group brings amazing people together and in doing so has helped me improve my own skills and has motivated me to do my very best everyday, just like they do. Without the DTG I would not know Phil [Reddington] and I would not have the opportunity to speak at DTS 2018."

REGISTER NOW:
WWW.THE-DTS.CO.UK/PAPER

Continued on page 2 ►

In partnership with:



Event partners:



Media partners:



Sponsors:



TRAVELLING TO THE DTS

By Road

Birmingham is at the hub of the UK motorway network, enabling visitors to travel directly from the M6, M1, M40 and M42. The NEC has its own on-site car parks.



By Rail*

The NEC is served by Birmingham International station, connected by a covered bridgelink. London is only 70 minutes away and trains also run direct to many regional towns and cities.



Accommodation

The Dental Technology Showcase official accommodation provider for 2018 is Event Express, who have negotiated special deals on nearby accommodation to suit all budgets and within easy reach of the show.



Event Express Tel: 01905 732737
Fax: 01905 732738 Email: reservations@eventexpressuk.com

WHEN & WHERE

HALL 5, NEC BIRMINGHAM
18th – 19th May 2018

Friday 18th: 09:00 – 17:30
(Friday Night Social from 17:30)

Saturday 19th: 09:00 – 17:30

SPECIAL OFFER

*Get **25% off rail tickets** with Virgin trains advance fares when travelling to the NEC on a West Coast Mainline service. To take advantage of this offer, visit www.virgintrains.co.uk/nec to book your tickets.

WELCOME FROM THE DLA

Even on the surface, Dental Technology Showcase (DTS) 2018 looks set to deliver outstanding educational opportunities for every member of the lab team. On closer inspection, however, there is even more than meets the eye...



Steven Campbell,
DLA President

Completely free to attend, DTS 2018 boasts an exceptional speaker line-up, combining the expertise of first-class speakers from the UK and across the globe. Some of the biggest names in the profession will take to the podium to demonstrate the latest concepts, materials and innovations at the very forefront of dental technology.

The DTS Lecture Theatre will once again be chaired by Phil Reddington, who has helped design a varied and informative programme. The Dental Technicians Guild (DTG) have once again created a masterful education programme, full of the latest insights and best practice.

Other features like the Digital & Innovation Theatre, CDT Conference (supported by the BACDT) and Orthodontic Technicians' Stream (supported by the Orthodontic Technicians Association) will provide further learning opportunities for technicians, OTA's and clinical dental technicians. What's more, lab owners will find important updates, fresh ideas and bespoke advice in the Dental Business Theatre.

Here's a first look at the programme you can look forward to...

...The ABC of DTS 2018 continued

◀ Continued from page 1

Collaborate with colleagues

No professional event is complete without the opportunity to meet up with friends and colleagues. DTS will offer many chances to do just this, encouraging discussion in the

lectures, connections on the trade floor and fun at the Friday Night Social event. You will also be able to network with various dental lab organisations such as the BACDT, DTA, DTG and OTA, with the DLA Membership Lounge will offer the comfort of refreshments for DLA members as well.



TO MAKE SURE YOU FOLLOW THE ABC OF DTS 2018, REGISTER FOR YOUR FREE PASS AT WWW.THE-DTS.CO.UK/PAPER OR CALL 0207 0134 660

Guess which RPD the patient preferred?

We think it's time you had a lightweight, comfortable, biocompatible alternative to metal RPDs.

So we created it.

Introducing Ultaire™ AKP, a high-performance polymer. Minimal fitting sessions. High patient satisfaction.

Innovation that makes patients smile.

uk@solvydental360.solvy.com
solvydental360.com

SOLVAY
DENTAL360™



Ultaire™ AKP

Solvay Dental 360™, a division of Solvay Specialty Polymers USA, LLC. All trademarks and registered trademarks are property of the companies that comprise the Solvay Group or their respective owners. © 2018, Solvay Specialty Polymers. All rights reserved.

DENTAL TECHNOLOGY SHOWCASE 2018
18th & 19th May 2018,
NEC Birmingham
Visit our stand #No. E25



SOLVAY
asking more from chemistry®



dentaltechshow



Dental Technology Showcase



@dentaltechshow

GDPR – Move towards compliance and don't get caught out!

The General Data Protection Regulation – or GDPR – has been the source of much confusion in the profession of late. Coming into effect on the 25th May this year, there have been a lot of myths surrounding the topic! Affecting most businesses in some way, dental laboratories, dental practices, dental groups and software providers all need to move towards compliance.

Marcus Rickard is a barrister, member of a top regulatory Chambers in London and member of 'New Leaf Advisory', which is a QC led boutique advising on GDPR. Amongst others, New Leaf Advisory is partnered with Experian, assisting their clients prepare for GDPR.

Marcus has over 10 years' experience in the dental sector through his running and ownership of Cable Dental Limited and Transactor Systems Limited, where he has focused on the regulatory and governance requirements in relation to the provision of technology and software solutions for the UK dental market – specifically looking at the interrelationship between dentists and dental laboratories. This led very naturally to becoming an expert on GDPR.

Marcus highlights what he believes are the key challenges currently being faced:

“Among other questions, you might be asking yourself...what do I need to do about patient consent? How do I change my privacy policies? Do I need to have a Data Protection Officer? How do I carry out a gap analysis or Privacy Impact Assessment? How does GDPR affect the information that I have on my staff, patients and other suppliers? How do I get contracts drawn up for all the people that are processing the personal data that my business processes?

“Post GDPR deadline, a dental practice can only use their patients’ personal data for lawful purposes in accordance with Article 6 of GDPR. It is for each and every dentist – the ‘data controller’ – to choose and record which of the possible justifications for using their patients’ data they are going to rely on. GDPR is very much about ‘accountability’.

“GDPR will also require every dentist (being a ‘data controller’)

to have written contracts with any other businesses that are processing personal data on their behalf. That means that if the dentist continues sending patients' 'personal data' (i.e. patient names and d.o.b.) to a dental laboratory, then they must have written contracts with the lab to reflect the Article 6 rights relied on by the dentist. This is because 99% of dental labs will be 'data processors' under GDPR, as they have staff and receive 'personal data' about patients for admin/filing/tracking purposes on a lab slip for the manufacturing process.

“Due to the expanded rights under GDPR for ‘Data Transparency’ and ‘Data Portability’, for the first time ever, this could also mean that practices have to inform patients of which dental lab(s) they will send their personal information to, as well as if the lab uses other labs.

“So, as one of the goals of GDPR is data minimisation, there is an argument for restricting the information shared so that unnecessary personal data is not sent – such as a patient’s name to a laboratory. Consequently, it would kill two birds with one stone to simply reduce the patient data shared between practice and lab – as with any other third parties you do business with.”

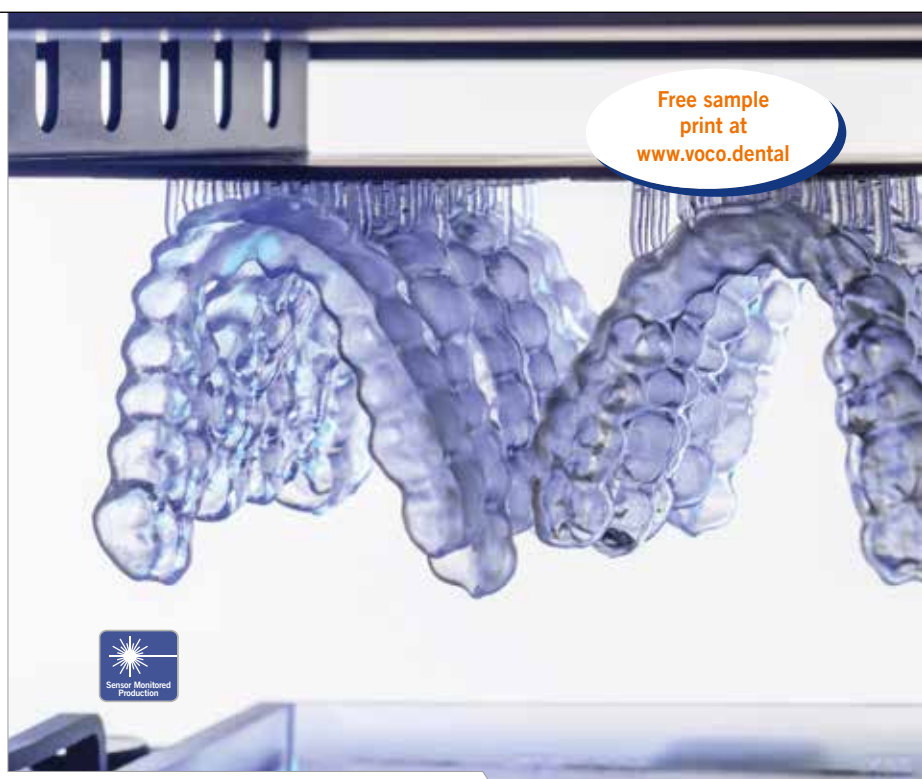
While that should certainly provide food for thought, clarity is integral for the dental profession to have confidence in their compliance with GDPR. Marcus will be providing just this at the Dental Technology Showcase (DTS) 2018, presenting “GDPR – Moving towards compliance!” within the Digital &



Innovation Theatre. Located on the trade floor, this session will be just as relevant for dentists as for dental technicians and lab owners.

"I'll be discussing GDPR from a barrister's perspective, demonstrating its applicability to dental laboratories and dental practices. I hope to do some myth-busting, clarifying what professionals need to do and providing some straightforward advice on moving towards compliance and trying to answer questions! I will also offer some general

Continued on page 4 ▶



3D PRINTING APPLICATION FOR YOUR LABORATORY

- DLP technology with a long-lasting 385 nm UV-LED light source enables printing of clear transparent objects such as splints
- Patented Flex-Vat – material-saving, since less support material necessary
- High vat volume for up to 24 splints, allows printing over night
- Maximized building speed with high process reliability due to SMP technology
- Large, coordinated selection of materials for printing models, splints, surgical guides etc.

**DLP 3D printer
SolFlex 350/650**



VOCO GmbH · Anton-Elettner-Straße 1-3 · 27472 Cuxhaven · Germany · Freecall 00 800 44 444 555 · www.voco-dental.com



AVOCO
THE DENTALISTS

DENTURES NEED SPECIAL CARE

POLIGRIP Daily Cleansers for dentures are proven to penetrate the biofilm* and kill microorganisms within hard-to-reach surface pores.¹

POLIGRIP Daily
Cleansers for
dentures are
non-abrasive to
clean the delicate
denture material
without scratching.²



Help your patients eat, speak and smile with confidence with the Poligrip denture care range.

*In vitro single species biofilm after 5 minutes soak. References: 1. GSK Data on File, Lux R. 2012. 2. GSK Data on File, Fernandez et al. 2006. Trade marks are owned by or licensed to the GSK group of companies. CHGBI/CHPOLG/0014/16(1)

At bench demonstrations from the DTG team

NEW



Delegates will have the opportunity to see the masters in action, with the DTG team running at bench demo's showing you new techniques and best practise close up.

STAND B16

FRIDAY 18TH MAY

10:00	Gc gradia composite layering and finishing Lisa Johnson
11:00	Replicating tissue contours and colour without breaking the bank Melcon Munton
12:00	Creation 8 powder builds Ben Ede
13:00	Soft tissue ceramic layering Stefan Picha
14:00	Working with lisi Mark Bladen
15:00	Soprano 10 layering on livento press Sylvia Arizpe

SATURDAY 19TH MAY

10:00	Shofu vintage pro ceramic Magnus Underhay
11:15	4 Faces of surface texture from young to old Phil Reddington
12:15	Customising denture teeth and gums John Wibberley
13:15	Composite tips George Morgan
14:15	Digital denture workflow and finishing Carl Fenwick

DON'T MISS THE DENTAL TECHNICIANS GUILD IN ACTION ON STAND B16!

...GDPR – Move towards compliance and don't get caught out! continued

◀ Continued from page 3

advice and, for those who need more details or who need to check or write contracts, we offer these services at New Leaf Advisory."

Marcus will also be demonstrating how the Cable Dental and Transactor software systems could provide a solution for interaction between laboratories and practices.

"As already described, there are challenges to overcome with regards to the relationship between the laboratory and practice. Cable Dental's integration with Transactor's new V8 lab software provides a solution as it will allow the dentist to make an order in the secure environment of the practice, in an anonymised format. If done correctly this can arguably mean that the dental lab is not a 'data processor' under GDPR, as they are not handling patients' identifiable personal data and thus they can avoid a lot of the responsibilities that GDPR creates. For the lab, it also keeps all case information and communication within one distinct, secure portal and removes the need for various different communication platforms, which can result in a clumsy, antiquated and time-consuming data collection process. This also helps move towards compliance with CQC, MHRA and MDD, in addition to GDPR.

"I hope delegates will leave my session with a better understanding of how GDPR affects them and the need for adequate GDPR-compliant contracts. They will also discover some of the solutions available to streamline the workflow and move towards compliance."

To find out more about GDPR and what you need to do to be moving towards compliance, don't miss Marcus' lecture at DTS 2018. Register for the event for free online today.

PO Box 21, Washer Lane, Halifax, HX2 7DP
Tel: 01422 364213 | Fax: 01422 330493
Email: stevie@johnwinter.co.uk | Web: www.johnwinter.co.uk
All prices are subject to VAT @ the current rate

QUALITY STARTS WITH YOUR ENVIRONMENT
HIGH QUALITY LABORATORY FURNITURE

- + Innovative Bespoke Designs
- + Ambidextrous Workstations
- + Integrated Handpieces
- + Full RAL Colour Chart
- + Flexible Colour Choices on Cabinets
- + 1.2mm Thick, Double Galvanised Steel
- + Cabinets Finished to Floor Level
- + Mono Block Stainless Steel-no Welds
- + Seamless Installation
- + Installed by Tavom's own Engineers
- + no Contractors

formlabs
Form 2
The most advanced desktop 3D printer ever created.
The Form 2 is the new standard for professional-grade desktop 3D printing, available now.
Professional 3D printing on your desktop.
Create rugged engineering prototypes, intricate artwork, or complex, watertight structures. The Form 2 is your team's tool to innovate.

PoliDent
Ref-Line
Ref-Line teeth are made from a new composite acrylic material. The material is composed of pre-cross-linked polymer and the matrix reinforced by inorganic nano-and micro-fillers. Compared to conventional acrylic, the new Ref-Line material offers improved resistance to the mechanical wear, good resistance to plaque adhesion, colour stability, higher hardness, excellent polishing properties and good adhesion to denture base materials.

Natural colour and shape

- Natural morphology of tooth
- Transparent incisal area
- Intensive chromaticity of the gingival region
- Including gingivally extended tooth designs for covering metal structures in implants and partial prostheses
- Obscured fissural zones on the occlusal surface
- Anatomically designed pronounced cusps assure the maintaining of the natural tooth appearance and structure in individual matching with the antagonists.

Brand new production technology

- Perfection of tooth design
- Retention opening on the lower part of trans canine teeth provides for easier and faster work.

New material

- 50% improvement in tooth wear*
- Elasticity remains unchanged*
- 15% improved hardness*
- Compared to the existing material.

REVOLUTIONARY
We developed a completely unique system as compared to other conventional systems. Stable Scan Stage (SSS) method with moving camera technology allows you scan without any fixture or adhesive.

FREEDOM^{HD}

Trusted Digital Solutions

BE CONNECTED

dentistry show
18th & 19th May 2018
Come and visit us on stand J21

"LET US PUT A SMILE ON YOUR FACE TODAY"

Unravelling the technology needed to get better connected with your laboratory and your patients is often complicated. The Henry Schein ConnectDental team will help improve your efficiency and productivity and deliver all the benefits of a streamlined digital journey. With education, finance, advice and support, ConnectDental makes it easy to integrate the digital work-flow at whichever stage you choose.

Rely on Us™

Call 0800 028 4870

henryschein.co.uk

• Business Solutions • CAD/CAM • Consumables • Decontamination • Digital Imaging • Education • Equipment • Laboratory • Lasers • Orthodontics • Service and Repair • Software • Surgical



dentaltechshow



Dental Technology Showcase



@dentaltechshow

How to press for success

Pressable ceramics is an increasingly popular field within dental laboratory technology. With the evolution of digital technology, this is an area that has managed to fend off a decline in the last decade. This is partly due to the highly aesthetic results that can be achieved, but also because using pressable ceramics is still a very cost effective way of creating a restoration.

This is the topic that Alex Wilder will cover at his session entitled 'How to press with success' in the Digital & Innovation Theatre at the Dental Technology Showcase (DTS) 2018. As a chemist and director of Just Pressables, Alex plans to speak about handling and working with dental investments for pressable ceramics and to share some useful hints, tips and precautions to enable dental technicians to gain more success and better results from their pressing. In a recent interview, Alex provided an overview of his presentation:

"As manufacturers, the team at Just Pressables have learnt a lot about developing dental investments as well as the kinds of issues that dental technicians can encounter. I will spend some time speaking about the misconceptions and misunderstandings regarding the use of dental investments."

Using a simple analogy, Alex explained:

"If you cast your mind back to a chemistry lessons that you may have attended in school where a class of students are required to crystallise a substance such as salt. What most will remember is that the results would vary significantly – there would be crystallising at different times, different types of crystals forming, some students would have no crystals at all and some would have a beaker full.

"This process governs a lot of the complications that can occur with dental investments; you might have 20 people using something, all with the same instructions but it is the little variables that can make a big difference and can result in completely different outcomes. Understandably, this can seem like black magic at times, but my aim is to demystify the whole thing; explain the science and the reasons why materials behave in certain ways.

"Materials are very sensitive and achieving the best results is partly down to technology and equipment, but also down to the way in which the materials are handled. I want to explain a few things for dental technicians to look out for and offer some guidance about the use of pressable ceramic dental investments in conjunction with a variety of materials such as wax, printed resin and milled blanks for instance. I hope to show delegates how to ensure the performance of different materials and help them to gain more success with their pressing; get more out of it, avoid problems and achieve better results particularly when premium products are used."

To come to the presentation by Alex Wilde as well as a wide variety of other enlightening sessions, book your place for the Dental Technology Showcase today.



Alex Wilder



SECURE YOUR FREE PASS TODAY!

- 1 **ONLINE:**
WWW.THE-DTS.CO.UK/PAPER
- 2 **EMAIL:**
D.EARL@CLOSERSTILLMEDIA.COM
- 3 **CALL MARCOS:**
0207 0134 660



DTS 2018 FRIDAY NIGHT SOCIAL

DELEGATES & EXHIBITORS WELCOME

After a busy first day at The Dental Technology Showcase, bring the team, clients and friends along to enjoy a buffet dinner, plenty of drinks and a friendly atmosphere.

Tickets include a **hot meal** and **complimentary drinks**.

**JUST
£20
+VAT PER
PERSON**



**TICKETS ARE LIMITED SO
BOOK YOURS TODAY!**

**JOIN US FOR A FUN-FILLED EVENING ON
FRIDAY 18TH MAY, 5.30PM-9.30PM AT
WETHERSPOONS (BEHIND THE TOUTE SUITE).**

Call Daniel Earl on 02476 719692 or email dts-pubtickets@closerstillmedia.com to book your tickets now!



dentaltechshow



Dental Technology Showcase



@dentaltechshow

Seamless integration

The Dental Technology Showcase conference programme has been tailored to teach, inspire, challenge and breathe life into all areas of the laboratory. The exhibition will allow the team to source and compare products and turn any new ideas into reality. This holistic approach reflects what it takes to be a successful lab owner and great technician in the modern climate. Clinical knowledge, the ability to think creatively as well as analytically, passion and a dedication to give every patient a beautiful, stable and functional result using the best materials and techniques – these are the threads that the Dental Technology Showcase ties together.

Stefan Picha will discuss the importance of marrying function with form in his presentation at the DTS Lecture Theatre. Stefan, a member of the Oral Design Foundation, will be sharing his knowledge and experiences of full-arch restorations that he has seen in the laboratory he runs in Fürth, Germany. He says:

“A lot of technicians focus on the aesthetic as the most important thing. But if the function of the restoration is wrong, then our work has failed. I will be looking at the problems that we will encounter if we don't give equal priority to the function in a lecture called, ‘Function is the guarantee for a long-term success. What do we have to consider in a full-arch restoration?’

“I am going to cover what we need to know before we start and the main reasons for any slipping in such a restoration. I am also going to look at why people do monolithic restorations and the relationship between red and white.

“I really believe this in an area in which technicians can grow their skills. I hope that delegates will take away from my lecture the information they need to get a better aesthetic

and more importantly a better function when they do this type of restoration. This will mean less slipping and fewer problems in the mouth overall.”

The Dental Technology Showcase aims to help you do things better. As well as the DTS Lecture Theatre programme, delegates will be able to listen to presentations in the Digital & Innovations Theatre and attend valuable Business Skills Workshops too. There will also be a Clinical Dental Technicians (CDT) conference stream as well as the Orthodontic Technician Association (OTA) seminars. The ADI Implant Theatre and BACD Aesthetic & Digital speakers rounds-up the impressive line-up.

It's easy to become disconnected with what is going on in the profession and forget how all the various threads must knit together if you are going to keep standards high and patients happy. The Dental Technology Showcase is a seamless integration of a high-quality educational platform with what's new and exciting in the technology and products market. For thought-provoking lectures and workshops running alongside a diverse and vibrant trade exhibition, secure your free passes today.



Stefan Picha

SECURE YOUR FREE PASS TODAY!

1	ONLINE: WWW.THE-DTS.CO.UK/PAPER	2	EMAIL: D.EARL@CLOSERSTILLMEDIA.COM	3	CALL MARCOS: 0207 0134 660
---	------------------------------------	---	---------------------------------------	---	-------------------------------



What is your Pressing trying to tell you?

Dental Pressable investments can be quite sensitive towards variables. Some are difficult to control or may even be unfamiliar to dental technicians. Here are 4 undesirable outcomes and what their cause might be:



Reaction layer worse than expected?

Occurs when molten ceramic infuses into the investment surrounding the wax object. Our analysis of Reaction layer showed a clear mixture of Lithium disilicate/silicate and Investment components.

The use of De-bubbliser (surface tension release agents) can often cause more reaction layer by suppressing the setting of investment immediately in contact with the wax object. This may cause higher porosity in the investment and allow infusion of Pressable ceramic material.

If debubbliser is used – use as little as possible, ideally just applying to the anticipated problem areas of the wax object using a brush.

A higher pressing temperature may cause more reaction layer by reducing the pressable ceramic's viscosity

Long pressing times (due to cracks or non-tight plungers) increases the likelihood of a worse reaction layer. Generally, the less time it takes to press, the better.

We developed JPVest to have a fairly high bulk density, not only to achieve excellent surface texture but also to suppress the infusion of Pressable Ceramic materials and keep reaction layer to a minimum.

Fins?

An interesting aspect to always look out for is where fins are

located. In general fins indicate that the investment is lacking the strength to withstand the refractory expansion forces that occur during burnout. This could be due a wide multitude of reasons but if fins occur exclusively from the sprue hole and travel upwards, the cause could be a contaminated Aluminium Oxide plunger.

If fins predominantly occur in-between objects, the cause could be a lack of spacing between objects or even too steep spruing angles.

If printed resin materials are burnt out, you may see fins travel out of the top of the objects as it is pressure generated by the swelling of these materials that causes cracking.

Fit not as expected?

When crowns fit too tight or too loose, often the first step is to adjust liquid ratios, which makes sense. One factor however often unbeknown to technicians is that the setting time can also greatly affect expansion and thereby fit.

Set time can fluctuate by as much as 1minute per 1.5 degree difference in temperature. Shorter setting times will generally result in lower expansion. Even in airconditioned labs, a mixing bowl dried under sunlight or a bottle of liquid stored next to a furnace can introduce incredible fluctuations in the all-important temperature variable.



Rough surface/Orange Skin?

A rough surface or orange skin can be the result of operating variables such as excessive pressing temperature but ultimately an Investment made with high quality materials makes a big difference. At Just pressables it was clear to us from the beginning that beautiful texture and reproduction of detail are truly valued by dental technicians. We developed JPVest from the ground up using our own inhouse manufactured raw materials for ultimate control and the best possible pressing results.



The best meeting in 2018 for the whole lab team

The Dental Technology Showcase (DTS) 2018 will host an array of industry-leading speakers throughout its packed two-day lecture programme, which is designed to provide all the information and inspiration dental lab professionals need to thrive.

Mark Bladen will be speaking within the DTS Lecture Theatre, which has been programmed in conjunction with the Dental Technicians Guild.

Mark is a dental technician with more than 30 years of experience. He currently runs his own laboratory in Worcester, which specialises in ceramics and implant work. Having lectured around the globe, led numerous courses and published papers in several major dental journals, Mark will be sharing his considerable expertise in Birmingham this year.

His session entitled "Aesthetics; The LiSi Effect", will cover the use of LiSi – the latest generation of lithium disilicate high strength glass ceramic. He will demonstrate how delegates can get the very most from the material and fabricate products with excellent aesthetics. He will also share cases to show restorations in the mouth and highlight the outcomes that can be achieved in a predictable way.

Mark adds:

"I hope dental technicians will take away practical advice

and benefit from all my knowledge and experience in using the LiSi system in my daily lab work."

DTS will once again offer something for everyone this year, combining exceptional speakers with inspiring presentations, live demonstrations and an expansion trade exhibition.

"In my opinion, DTS will be the best meeting in 2018 for the whole dental lab team," says Mark. "The technical talent on show within the speaker line-up will be world-class."

Joining Mark in the DTS Lecture Theatre will be John Wibberley, Stefan Picha, Finlay Sutton, Andreas Leimbach, Marc Romer, Roy Davies, Robert Arvai, Derren Neve, Jonathan Hughes and Ricardo Soares.

Free for all the team to attend, make sure you don't miss DTS 2018 this May!



Mark Bladen

SECURE YOUR FREE PASS TODAY!

- 1 **ONLINE:**
WWW.THE-DTS.CO.UK/PAPER
- 2 **EMAIL:**
D.EARL@CLOSERSTILLMEDIA.COM
- 3 **CALL MARCOS:**
0207 0134 660



The Straumann Digital Performance Roadshow Truck will be at DTS 2018!

NEW

Straumann will be onsite at DTS to wow delegates with its synchronised digital workflow solutions. Each piece of equipment or software fits to form the perfect digital workflow for your surgery or lab. Straumann's top-of-the-range digital offering will be showcased in the 16-metre-long juggernaut mobile showroom, where clinicians, CDTs and technicians will get the chance to experiment with intra-oral scanners, case planning software, 3D printing and milling equipment, while learning from inspirational digital experts.



3 EASY WAYS TO REGISTER – FREE!

- 1 **ONLINE:**
WWW.THE-DTS.CO.UK/PAPER
- 2 **EMAIL:**
D.EARL@CLOSERSTILLMEDIA.COM
- 3 **CALL MARCOS:**
0207 0134 660



dentaltechshow



Dental Technology Showcase



@dentaltechshow

DTS CONFERENCE





DTS LECTURE THEATRE

Designed for dental technicians, clinical dental technicians and laboratory owners, The DTS Lecture Theatre has this year been programmed by the Dental Technicians Guild (DTG). Not to be missed!

Supported by:



FRIDAY 18TH MAY		
09:30 - 10:30	Aesthetics- the LiSi effect Mark Bladen, RDT, BIDST, Dental Technician/ Ceramist, Mark Bladen Dental	Supported by: 
10:50 - 11:50	The lowdown on digital dentures Roy Davies, Manager/CDT, Oakview Restorations Ltd	Supported by: 
12:15 - 13:15	High performance polymers and lithium disilicates – a scientific review Robert Arvai, CDT, RDT, CEO, Ardentia Dental Laboratory	Sponsored by: 
13:45 - 14:45	Telescope technique 2.0 Andreas Leimbach, Master Dental Technician Dr Mark Römer, Dentist specialized in Esthetic Dentistry, Implantology and Periodontology	Supported by: 
15:00 - 16:00	Valplast – flexible, aesthetic, functional partial dentures Derren Neve, DCP - GDC Sales & Technical Director	Supported by: 
16:20 - 17:20	Function is the guarantee for a long term success - what do we have to consider in a full arch restoration! Stefan Picha, MDT Master, Dental Technican	Supported by: 

SATURDAY 19TH MAY		
09:45 - 10:45	Teeth and gum's fixed and removable John Wiberly, (UCLAN) FBIDST, Clinical Dental Technician	Supported by: 
11:15 - 12:15	Ultaire AKP: RPD design concepts & applications, one year on... Jonathan Hughes, Dental Technician, Clinical Dental Technician, Owner, Hughes Dental Laboratory, Harrogate	Sponsored by: 
12:45 - 13:45	Improving denture aesthetics - making dentures look like natural, real teeth Dr Finlay Sutton, BDS, DGDP (UK), MSc, MFDS RCS Ed, MRD RCS Ed, PhD, FDS (Rest Dent) RCS Ed, Registered Specialist in Restorative Dentistry, Prosthodontics, Endodontics & Periodontics, Prosthodontist, Garstang Dental Referral Practice	Sponsored by: 
14:00 - 15:00	Session delivered by George Morgan, RDT mDTG	Supported by: 
15:15 - 16:15	Make it look invisible, the signature denture concept Ricardo Soares, Prosthetic Technician	Supported by: 



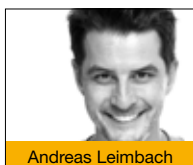
Mark Bladen



Roy Davies



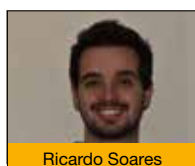
Robert Arvai



Andreas Leimbach



Dr Finlay Sutton



Ricardo Soares



Oliver Ambridge



Dr Mark Römer



Alexander Wilder



Derren Neve



Stefan Picha



John Wiberly

DIGITAL & INNOVATION THEATRE

Headline sponsor:



The Digital & Innovation Theatre brings together the latest innovations and new technologies available in the UK. A must attend for laboratory owners and technicians alike, this is your opportunity to learn from the experts and drive your lab/career forward.

FRIDAY 18TH MAY		
09:20 - 10:00	GDPR - moving towards compliance – don't be the ones to get caught out! Marcus Rickard, Barrister, New Leaf Advisory	Sponsored by: 
10:15 - 11:15	Anterior Indirect Restorations: a predictable workflow Alexander DeClerck, DDS, MSc, Dentist and Co-Founder, MOND dental practice (Belgium)	Sponsored by: 
11:30 - 12:30	Disruptive technology – revolution or evolution Jonathan Rayfield, Director, Techceram Digital Carolien Brouwer, Senior Area Sales Manager Dental Europe, NextDent Steve Nelson, Crown and Bridge Technician, Digital and Indirect Solutions Specialist, 3M Steve Watson, Application Specialist, exocad UK Ltd Richard Buckle, 3D Innovation, Techceram Dr Phil Evans, Materials Specialist, Techceram Tobias Zander, Technical & Service Support Specialist, Smart Optics Jinesh Patel, Ortho lab owner Stephan Winterlik, Business/Sales Manager 3D Printing Dental EMEA+India for 3D Systems, NextDent	Sponsored by: 
13:00 - 14:00	Go digital: incorporating innovative digital techniques into today's laboratory Wayne Hall, DT, Managing Director of Hall Dental Studio	Sponsored by: 
14:30 - 15:30	IOS: A Unique Perspective Marcos White, Clinic and Lab owner at The Courtyard Dental Centre, Huddersfield	Sponsored by: 
16:00 - 17:00	Anterior Indirect Restorations: a predictable workflow Alexander DeClerck, DDS, MSc, Dentist and Co-Founder, MOND dental practice (Belgium)	Sponsored by: 

SATURDAY 19TH MAY		
10:00 - 11:00	Process for the modal free crown Oliver Ambridge, Registered Dental Technologist	Sponsored by: 
11:45 - 12:45	IOS: A Unique Perspective Marcos White, Clinic and Lab owner at The Courtyard Dental Centre, Huddersfield	Sponsored by: 
13:45 - 14:45	Dental investments – how to press with success Alexander Wilder, BSc, Director of Dental Business, Just Pressables	Sponsored by: 
14:55 - 15:55	Celtra Press Anterior Aesthetics Lino Adolf, Owner, Majestic Smile Ltd	Sponsored by: 
16:05 - 17:05	GDPR - moving towards compliance – don't be the ones to get caught out! Marcus Rickard, Barrister, New Leaf Advisory	Sponsored by: 



PROGRAMME 2018

OTA SEMINARS

Building on the already successful OTA Seminars and workshops, the orthodontic technician's stream will cover everything from Cleft Lip and Palate to client reviews, making this unique opportunity unmissable for Orthodontic Technicians.

Supported by:



FRIDAY 18TH MAY		
09:30 - 10:15	Snoring & sleep apnoea – mandibular advancements appliances; a role for the laboratory Matt Everatt, FOTA, Technical Director	Supported by:
11:30 - 12:15	Evolution of Light Cure and a LC Twin Block Technique Stephen Prime, ADV Orth Birmingham, Orthodontic Technician, Prime Orthodontic Studio LTD	Supported by:
13:30 - 14:15	The appliance of science Archna Suchak, BSc(Hons), BDS(Hons), MFDS, MSc, MOrth RCS, FORTH RCS, Specialist Orthodontist Seymour Hayden, City and Guilds Certificate, Senior Orthodontic Technician, Angle House Orthodontics	Supported by:
16:45 - 17:15	Just a TAD Daniel Shaw, Maxillofacial and Orthodontic Technologist, Chesterfield Royal Hospital, NHS	Supported by:

SATURDAY 19TH MAY		
10:00 - 10:45	The not new newport twin block Steve Evans, Laboratory Manager, Royal Gwent Hospital, Aneurin Bevan University Health Board	Supported by:
12:00 - 12:45	Management of complex malocclusions Purnima Chhabra, BDS, MFDS RCS(Eng), MOrth RCS(Edin), MPhil(Birm), FDS(Orth)RCS(Eng), Consultant Orthodontist, Southend University Hospitals NHS Trust and Mid-Essex Hospital NHS Trust	Supported by:
14:00 - 14:45	Den-Tech & Crisis Dental Service (CDS) - a pilot field dental laboratory service for the homeless Janine Doughty, BDS (Bris), MDPH (distinction), DDPH RCS Eng, PG Cert Med Res (distinction), Deputy service organiser and shift leader, Crisis at Christmas Andrea Johnson, BSc hons, FOTA, MDTA, Chair, Den-Tech	Supported by:
16:00 - 17:00	Mandibular Repositioning Devices (MRD's) for the treatment of the snoring and obstructive sleep apnoea within NHS hospital service Lucia Amato, MSc, Orthodontic Technician	Supported by:

CDT CONFERENCE

The CDT conference is set to provide the best UK based education and training for Clinical Dental Technicians. The two-day programme will deliver exciting sessions covering everything from skills development and gum characterisation to design & manufacturing. Brought to you by the British Association of Clinical Dental Technology (BACDT), this is a must for any CDT, and an excellent networking opportunity to share best practice and new ideas.

Supported by:



FRIDAY 18TH MAY		
10:30 - 11:15	Perfect fitting dentures Chris Egan, RDT Dip Lds, CDT Dip Rcs Eng, Clinical Dental Technician, Egan Dentures Ltd	Supported by:
12:30 - 13:15	Occlusion made simple Jonathan Bill, RDT, Director of Operations & Training, Europe, CQR Dentures	Supported by:
14:30 - 15:15	CDT's and GDC Matthew Hill, Executive Director, Strategy General Dental Council	Supported by: Sponsored by:
15:30 - 16:15	The patient experience from start to finish Matt Burnell, CEO, BACDT Steve Taylor, Vice President, BACDT	Supported by:

SATURDAY 19TH MAY		
11:00 - 11:45	Improving denture aesthetics - making dentures look like natural, real teeth Dr Finlay Sutton, BDS, DGDP (UK), MSc, MFDS RCS Ed, MRD RCS Ed, PhD, FDS (Rest Dent) RCS Ed, Registered Specialist in Restorative Dentistry, Prosthodontics, Endodontics & Periodontics, Prosthodontist, Garstang Dental Referral Practice	Supported by: Sponsored by:
13:00 - 13:45	Ultaire AKP: RPD design concepts & applications, one year on... Jonathan Hughes, Dental Technician, Clinical Dental Technician, Owner, Hughes Dental Laboratory, Harrogate	Supported by: Sponsored by:
15:00 - 15:45	The key elements of successful retirement planning Gary Fisher DipPFS, Director, Fisher Financial Mgmt Ltd, Associate Partner Practice of St. James's Place Wealth Management	Supported by:



Stephen Prime



Steve Evans



Purnima Chhabra



Janine Doughty



Andrea Johnson



Lucia Amato



Matthew Hill



Dr Finlay Sutton



Jonathan Hughes



Matt Burnell



Steve Taylor



Derren Neve



Daniel Shaw



Seymour Hayden



Wayne Hall



Jonathan Bill



dentaltechshow

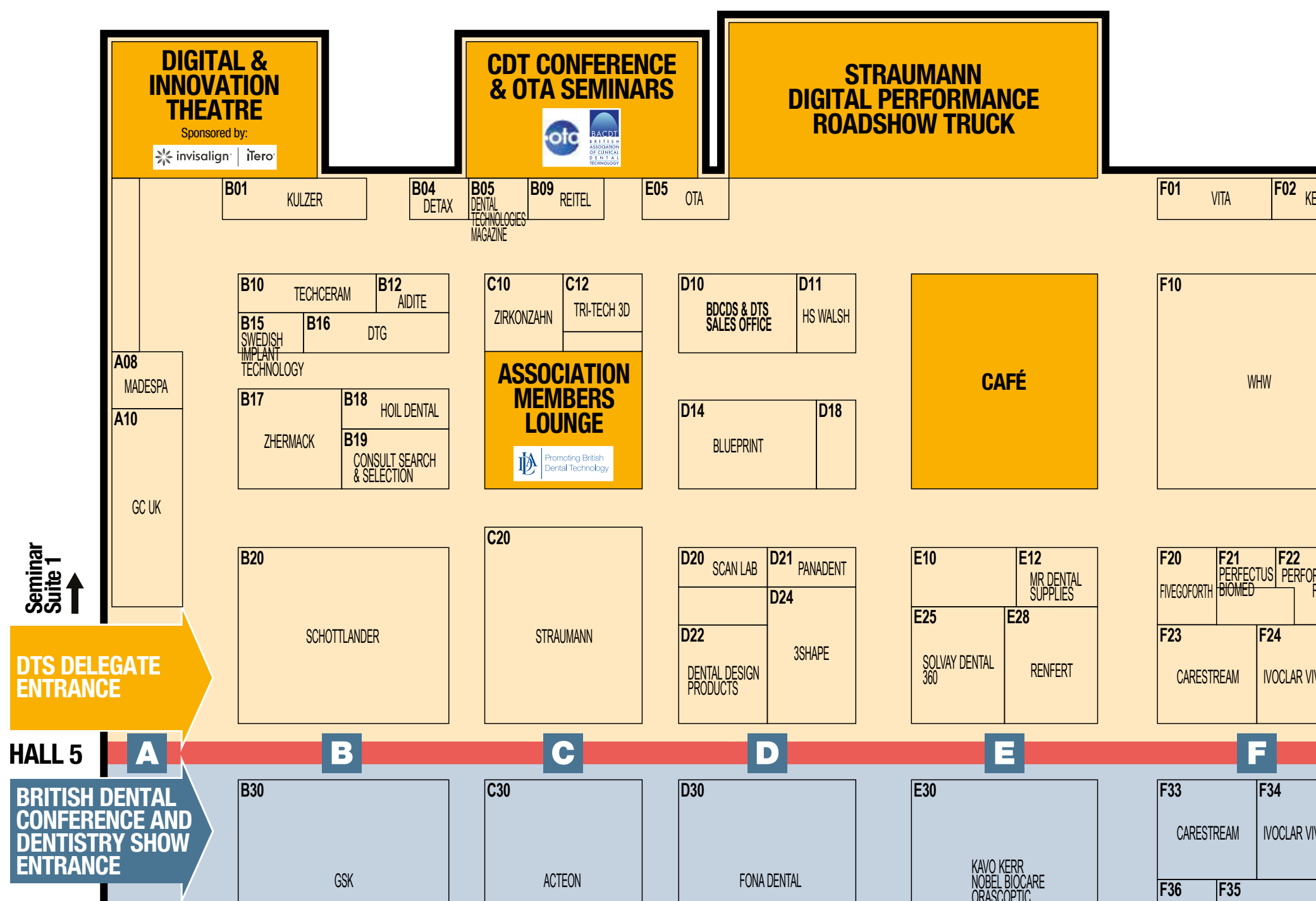


Dental Technology Showcase



@dentaltechshow

2018 FLOORPLAN



OTA SEMINARS



The OTA Seminars will cover everything from Snoring & sleep apnoea to Complex malocclusions, making this unique opportunity unmissable for Orthodontic Technicians.

CDT CONFERENCE



The CDT Conference offers the very best education and training for CDTs. Covering everything from fitting dentures to patient experience, right through to CDT's and the GDC.

DTG AT BENCH DEMO'S



Delegates will have the opportunity to see the masters in action, with the Dental Technicians Guild team running at bench demonstrations throughout the both days showing you new techniques and best practice close up.

SECURE YOUR FREE PASS TODAY!

1

ONLINE:
WWW.THE-DTS.CO.UK/PAPER

2

EMAIL:
D.EARL@CLOSERSTILLMEDIA.CO



dentaltechshow



Dental Technology Showcase



@dentaltechshow

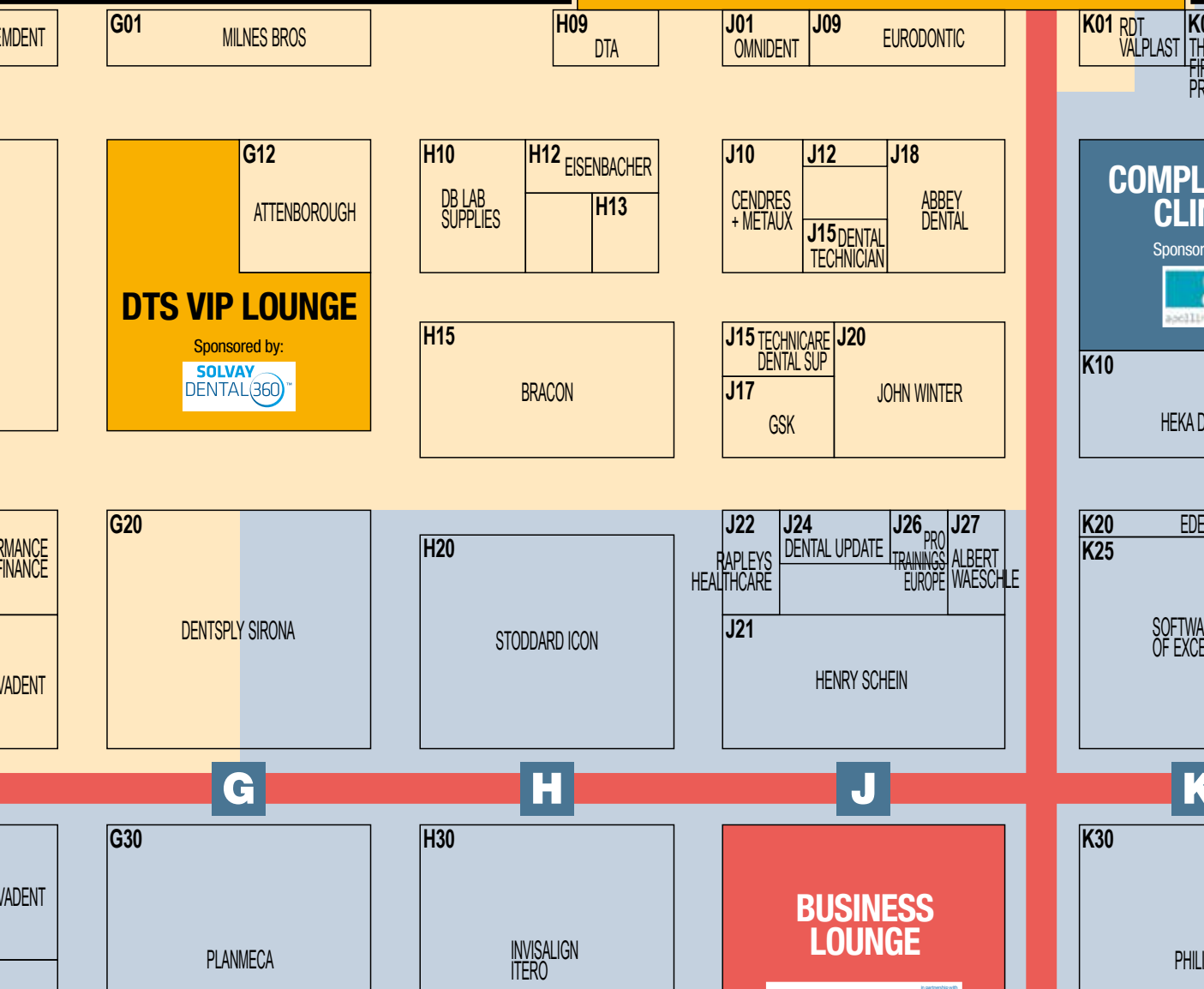
EXHIBITOR LIST

COMPANY NAME	STAND	NEW	DW
3Shape	D24		
Abbey Dental Supplies	J18		
AIDITE	B12		
Attenborough Dental	G12		
Blueprint Dental	D14		
Bracon Limited	H15		
Cable Dental	F10	✓	
Carestream Dental Ltd	F23		
Cendres + Metaux	J10	✓	
Consult Search + Selection	B19		
Danville	L30		
DB Lab Supplies	H10		
Dental Design Products Ltd	D22		
Dental Laboratories Association	Association Members Lounge		
Dental Technicians Guild	B16		
Dental Technologies Magazine	B05		
Dental Technologists Association	H09		
DENTSPLY SIRONA UK & IRELAND	G20		
Detax Dental	B04		
Eisenbacher Dentalwaren ED GmbH	H12		DW
Eurodentic	J09		
Evident	L30		
ExamVision	L30		
GC UK Ltd	A10		
GlaxoSmithKline	J17		
Henry Schein Dental	J21		
Hoil Dental Manufacture Solutions Ltd	B18		
HS Walsh	D11	✓	
Ivoclar Vivadent	F24		
John Winter & Co Ltd	J19		DW
Kemdent	F02		
Kulzer	B01		
Madespa	A08	✓	DW
Medentika	C20	✓	
Milnes Bros	G01		
Mr Dental Supplies Ltd	E12		DW
Omnident UK	J01		
Orthodontic Technicians Association (UK)	E05		
Panadent Ltd	D21		
Perfectus Biomed	F21	✓	
Performance Finance Ltd	F22		
RDT Technology	K01		
Reiner	J15		
Reitel Feinwerktechnik	B09		
Renfert	E28		DW
Scan Lab	D20	✓	
Schottlander	B20		
SHERACCLASSIC	J20	✓	
SHERAdigital	F10	✓	
Solvay Dental 360	E25		
Straumann	C20		
Swedish Implant Technology	B15	✓	
Techceram	B10		
The Dental Technician	J13		
Tri-Tech 3D	C12		
VITA	F01	✓	DW
VOCO	M15		
WHW	F10		DW
Zhermack	B17		
Zirkonzahn	C10		

✓ = New exhibitor DW = Distributors wanted

DTS LECTURE THEATRE

Supported by:



STRAUMANN TRUCK

NEW

Delegates will have the opportunity to experiment with intra-oral scanners, case planning software, 3D printing and milling equipment, while learning from inspirational digital experts.



VIP LOUNGE

The VIP Lounge offers an exclusive area to have meetings, catch up with colleagues and enjoy complimentary tea, coffee and sandwiches.



13 PHONE: 0207 348 5750



dentaltechshow



Dental Technology Showcase



@dentaltechshow

Product Categories

3D printing

Straumann
WHW
John Winter & Co Ltd
Blueprint Dental
Kulzer
Reiner
Tri-Tech 3D
Scan Lab
Henry Schein Dental

Abrasive - Rotary Tools

WHW
HS Walsh

Anti-snoring Appliances

WHW

Articulators - Accessories

WHW

Associations - Charities - Organisations

Consult Search + Selection
Dental Technologists Association
Orthodontic Technicians Association (UK)
Dental Laboratories Association
Bench Lights
WHW

Benches

John Winter & Co Ltd

Brushes

Renfert
WHW

CAD - CAM

Zirkonzahn
Straumann
WHW
GC UK Ltd
Blueprint Dental
Carestream Dental Ltd
Reiner
VITA
Tri-Tech 3D
Scan Lab
3Shape
Swedish Implant Technology
Henry Schein Dental
Panadent Ltd
Casting Apparatus
Reitel Feinwerktechnik
HS Walsh
Ceramics
Zirkonzahn
Ivoclar Vivadent
WHW
GC UK Ltd
VITA
Cobalt Chromium
WHW
Eisenbacher Dentalwaren ED GmbH

Composites

Mr Dental Supplies Ltd
GC UK Ltd

Madespa

VITA
Tri-Tech 3D
Cendres + Metaux

Compressors

Blueprint Dental

CPD Education - Training

Straumann
Mr Dental Supplies Ltd
Carestream Dental Ltd
Dental Technologists Association
Orthodontic Technicians Association (UK)

Crown - Bridge Appliances

John Winter & Co Ltd

Denture Base Materials

Ivoclar Vivadent
WHW
Mr Dental Supplies Ltd
Kulzer
Kemdent

Denture Marking

WHW

De-waxing Equipment

WHW

Duplicating Machines

WHW
Milnes Bros

Dust - Fume Extractors

WHW

Milnes Bros

Flasks - Dental Presses

WHW
Milnes Bros

Furnaces

Ivoclar Vivadent
WHW
Kulzer
VITA
Cendres + Metaux
Henry Schein Dental

Furniture - Planning

John Winter & Co Ltd

Handpieces

WHW
Panadent Ltd

Implants

Straumann
Kulzer
Reiner
Swedish Implant Technology
Cendres + Metaux

Investments

WHW
Madespa
Cendres + Metaux
Eisenbacher Dentalwaren ED GmbH

IT - Websites

Dental Design Products Ltd

techceram

The Professional Labs choice

STAND B10

Your Lab Partner for Milling Machines, 3D Printing Equipment and Software

Our professional team can scope your equipment and software needs to create a total digital workflow.

Advice, Equipment Supply, Install, Train, Maintain. No other Lab equipment supplier supports like Techceram because we understand what Labs need.

We provide a Lab to Lab Design, Milling and 3D Print service too, for those busy times when your Lab needs backup.



Structo
Empowering Dental with 3D

Next Dent
by 3D SYSTEMS

imes-icore
Competence in CNC & DENTAL-Solutions

CALL TODAY

on **01274 416664**
visit us at **www.techceram.com**

Carestream
DENTAL

INTELLIGENT ENOUGH TO IMPRESS A GENIUS



Become an Intraoral Scanning Master at our hands-on **MASTERCLASSES 2018**

Book your place at carestreamdentaluk.eventbrite.com

SEE FOR YOURSELF AT **THE DENTISTRY SHOW**
STAND F. 33



WORKFLOW INTEGRATION | HUMANISED TECHNOLOGY | DIAGNOSTIC EXCELLENCE

Discover smarter scanning with the CS 3600 family

Enjoy intraoral scanning that's more intuitive, efficient and powerful.

- Automatically fills in holes with appropriate colour for the optimal aesthetic outcome
- Warns users in real time about areas that require additional scanning and indicates the ideal direction to scan in
- Facilitates patient occlusion analysis with automatic occlusion mapping
- Eliminates manual post-scan adjustment by automatically removing unwanted soft tissue

Best of all, the CS 3600 delivers the best performance for overall trueness.*

© Carestream Health, Inc. 2017. 15978 AL CS 3600 PA 0917
* "Accuracy of Four Intraoral Scanners in Oral Implantology: A Comparative In-Vitro Study," Imburgia et al., BMC Oral Health (2017) 17:92 DOI 10.1186/s12903-017-0383-4.

For more information
call 0800 169 9692
email sales.uk.csd@csdental.com
or visit carestreamdental.co.uk



dentaltechshow



Dental Technology Showcase



@dentaltechshow

Product Categories

Laboratory Instruments - Tools

Renfert
WHW
RDT Technology
Eurodonic
Reiner
Scan Lab
Henry Schein Dental
Panadent Ltd

Laboratory Motors

Blueprint Dental
Milnes Bros

Laboratory Software

Zirkonzahn
WHW
Reiner
3Shape

Laboratory Sundries

Zirkonzahn
WHW
John Winter & Co Ltd
GC UK Ltd
RDT Technology
Eurodonic
Kemdent

Lathes Polishing

WHW
Reitel Feinwerktechnik

Marketing Services

Dental Design Products Ltd

Media - Publications

Dental Technologists Association
Dental Design Products Ltd

Metals (Non Precious)

WHW
Mr Dental Supplies Ltd
Eisenbacher Dentalwaren ED Gmbh

Milling Equipment

Zirkonzahn
Straumann
Ivoclar Vivadent
WHW

Henry Schein Dental

Eisenbacher Dentalwaren ED Gmbh

Model Trays

WHW
RDT Technology

Mouthguard Equipment - Materials

WHW
Eurodonic
Panadent Ltd

Orthodontic Products

WHW
Eurodonic
3Shape
Orthodontic Technicians Association (UK)

Plaster Mixers - Silos

WHW

Plasters

WHW
Madespa
Eisenbacher Dentalwaren ED Gmbh

Polishing Products

WHW

Porcelain

WHW
Scan Lab
Cendres + Metaux
Prosthetics
WHW
GC UK Ltd
RDT Technology
Tri-Tech 3D
Scan Lab
Swedish Implant Technology

Sand Blasters

Renfert
WHW
Reitel Feinwerktechnik
Blueprint Dental
HS Walsh

Teeth

Ivoclar Vivadent
WHW
Mr Dental Supplies Ltd
John Winter & Co Ltd
Kulzer
VITA

Tri-Tech 3D

Trimmers

Renfert
WHW
Reitel Feinwerktechnik
Eurodonic

Ultrasonics

Reitel Feinwerktechnik
HS Walsh

UV Light Boxes

Milnes Bros

Vibrators

WHW

Wax

Renfert
WHW
Kemdent

Welders - Soldering Units

WHW
HS Walsh



**REGISTER
FOR FREE AT**

**WWW.THE-DTS.CO.UK/
PAPER**





Teeth-straightening is now straightforward

75% of patients could benefit from a smile improvement.¹
Invisalign Go is a teeth-straightening treatment designed especially for dentists. Provide your patients with the most recognised brand in the world. Take one step ahead today and register for a training course to become an **Invisalign Go** provider.

Visit www.invisalign-go.co.uk or call 0800 10 17 090

Align Technology BV
Arlandaweg 161
1043HS Amsterdam
The Netherlands

United Kingdom: 0800 10 17 090
Other (English): +31 (0)20 586 3615

¹ Source: Prevalence and distribution of selected occlusal characteristics in the US population, 1988-1991. Brunelle, *et. al.* Journal of Dental Research (2/96) and NHANES data.

© 2017 Align Technology (BV). All Rights Reserved. Invisalign®, ClinCheck® and SmartTrack®, among others, are trademarks and/or service marks of Align Technology, Inc. or one of its subsidiaries or affiliated companies and may be registered in the U.S. and/or other countries. 202092 Rev A

 **invisalignGo** | made to move



dentaltechshow



Dental Technology Showcase



@dentaltechshow

Communication – the key to a happy marriage

It has been said many times that communication is the key to a happy marriage. The same is true in our personal lives as it is in our professional ones – dentists and dental technicians must establish open communication in order to establish a strong and successful relationship.

The Dental Technology Showcase (DTS) is the perfect place for all dental technicians, clinical dental technicians and lab owners to network and engage with others, while also learning new things and developing practical skills.

Among the highly anticipated speakers at DTS 2018 will be Dr Finlay Sutton, a Specialist in Restorative Dentistry, Prosthodontics, Periodontics and Endodontics.

“My lecture will focus on removable prosthodontics including complete dentures, partial dentures and implant-supported over-dentures,” he says. “Good quality removable dentures are still a very valid alternative to implant-supported restorations. They offer many advantages such as improved aesthetics, less invasive treatment options and less complex maintenance.

“In addition, the principles required for producing aesthetically superb complete dentures apply equally well to large scale fixed dental implant restorations. It is considered best practice in making full arch implant-stabilised fixed restorations, to carry out a full three-dimensional prototype ‘dress rehearsal’ with complete dentures. This has the

further advantage that, in some cases, the patient may be happy to settle for very good removable dentures and save the considerable effort and expense of implant surgery.

“With the right information provided and sufficient communication between lab and practice, partial dentures can be produced that function just like removable bridges. We can now design and create dentures that are beautiful but age appropriate, ensuring they look as natural as possible.

“In my lecture, I’ll cover the production process and highlight the importance of excellent impressions in order to maximise retention and suction. I hope delegates will develop their understanding of how occlusion should be recorded for optimum accuracy, as well as how tooth position and adequate lip support can be established during the planning phase.

“Ultimately, I hope to reignite delegates’ enthusiasm and love for removable prosthodontics. We can really change patients’ lives with beautifully made dentures, but only by working together can we improve outcomes and increase both professional and patient satisfaction.”



Dr Finlay Sutton

Co-located with the newly branded British Dental Conference and Dentistry Show, DTS 2018 will provide an ideal platform from which to network with friends and colleagues, while also establishing and strengthening professional relationships with current and potential clients. It is, after all, the relationship between dentist and technician that often makes the biggest difference to the efficiency, effectiveness and quality of treatment provided to patients.

“Finding and keeping a great dental technician is essential to produce beautiful-looking and well-fitting dentures for our patients,” concludes Finlay. “It is a relationship that requires nurturing through our generosity, kindness, love, time, patience, empathy and encouragement. It is rather like a marriage, being a wonderful and exciting part of our professional life. Clear, two-way communication is the secret.”

SECURE YOUR FREE PASS TODAY!

1

ONLINE:
WWW.THE-DTS.CO.UK/PAPER

2

EMAIL:
D.EARL@CLOSERSTILLMEDIA.COM

3

CALL MARCOS:
0207 0134 660



Zirkonzahn®

S900 ARTI SCANNER

M1 WET HEAVY METAL MILLING UNIT

Zirkonzahn Worldwide – T +39 0474 066 680
info@zirkonzahn.com – www.zirkonzahn.com

Attenborough

0115 947 3562 www.digitaldentalab.com

Dental Wings 3 Series with CAD software

Prices starting from only £4.82 / Day over 5 years*

DS-200 with CAD software

Prices starting from only £4.47 / Day over 5 years*

DS-EX with CAD software

Prices starting from only £4.17 / Day over 5 years*

CONTACT US FOR MORE INFO ON
 TEL: 0115 947 3562
 EMAIL: info@attenborough.com

Terms and Conditions
 *The following rates are indicative only, all finance options shown are subject to status, availability and full credit approval. An arrangement fee may be charged with the first monthly payment. We are not a financial service provider but will be pleased to provide contact details of financial service providers who are members of the British Dental Industries Association, other financial service providers are also available. All prices exclude VAT, E & O.E.

Twitter.com/attenboroughden Facebook.com/attenboroughdental youtube.com/attenboroughdental

Integrating dental technology and practice

Dentistry has never been more of a team profession than it is today – everyone from the dental technician to the dentist and practice manager has a role to play in delivering excellent patient care.

An integrated team approach is therefore crucial, and this is something brought to the fore at The Dental Technology Showcase (DTS). Co-located with the British Dental Conference & Dentistry Show, it is the ideal place to network with both fellow technicians and partners in practice.

I think the co-location with The Dentistry Show is quite novel and it has made the event a lot better. I'm always impressed with the range of products here. I always recommend the show to my colleagues, and bring as many with me as I can.

Gregg Clutton, Technical Team Lead, Manchester Metropolitan University

I come here to see the new products on the market and to meet up with people from the industry. I really like the merger between the dentistry and technology aspects, as it's really relevant to my role. I have attended lectures on both sides.

Stephen Wears, Clinical Dental Technician, Your Smile Denture Clinic



The three 'I's of DTS INNOVATION

Discover all the latest materials, services and technologies throughout the extensive trade exhibition, featuring more than 100 lab-dedicated suppliers and manufacturers.

INSPIRATION

Hear from an array of industry-leading speakers as they share their knowledge and expertise in the hope of inspiring you to raise the standard of your work.

INTEGRATION

Network with like-minded peers, while also catching up with old friends and new, either throughout the event or at the highly anticipated Friday Night Social on Friday evening.

With all this, plus hours of verifiable CPD, on-stand learning and live demonstrations, the Dental Technology Showcase (DTS) 2018 promises to be quite an affair.

Don't miss out – save the dates in your diary today!



scan_lab

digital
dental
laboratory

OUR SCANNER, YOUR SUCCESS!

Get free dental scanner
and increase your revenue!



Visit us on stand D20

For more information please contact
07855 437 437
www.scanlab.dental



Brand new charity Den-Tech launches



Den-Tech is the brain child of dental technicians Andrea Johnson and Andrew Sinclair who after visiting Uganda with a clinically orientated dental charity realised that there was a great need for quality dental technology services in the country and other developing countries like it.

The Charitable Incorporated Organisation (CIO) they have set up is designed to relieve poverty by the provision of affordable dental appliances to those patients who are in need and unable to afford such items and in furtherance of this, to provide training, mentoring and education for dental technicians in developing countries to enable them to supply appropriate quality dental appliances. This is also in addition to supporting those most needy within our own country - the homeless.

There are many charities which provide the incredibly valuable service of 'dental pain clinics' but no real provision for the restoration of the dentition thereafter. This can leave patients with large gaps where teeth have been extracted meaning that they can quite often struggle to eat and chew their food well, to speak properly and to look and feel normal.

Andrea and Andrew felt very passionately that this should not continue and that if they could set up a high quality, supported working and training dental laboratory in the country they could help provide not only a little help now but a legacy of support and training that could be a leg up to the native people and not just a temporary hand out.

They set up their charity called Den-Tech in 2017 and have enlisted a board of trustees who are equally as passionate about using their skills and resources to help out those less fortunate. The board of trustees now comprises of Andrea Johnson, Andrew Sinclair, Delroy Reeves, Edward Mapley, Jade Oakes Stott and Robert Williams, you can view brief biographies of the trustees on Den-Tech's website <https://www.den-tech.org/>

This drive and enthusiasm has now extended to helping out

those less fortunate in the UK, the homeless. This new project in addition to the existing overseas ones has received a fantastic amount of support from the dental technician community who are pulling together to provide a full range of dental technology services free to those most vulnerable and needy in our society.

Our wonderful flagship supporters **Blueprint dental** who have already donated and continue to donate an incredible amount of dental materials and equipment on behalf of their customers have now put their full weight and resources into helping this project to succeed. It can only go from strength to strength.

It is also only through the generosity companies such as Blueprint Dental, DB orthodontics, John Winter, Schottlander and WHW and of course the brilliant community of dental technicians around the country that can make this charity a success, so from the bottom of our hearts we, the Den-Tech trustees thank you and look forward to us all achieving great things together in the months and years to come.

We are now looking for additional volunteers from the technician sector as well as any clinicians who would like to donate their time and skills to this really worthwhile cause, especially for the UK projects.

If you would like to know more, volunteer your services, donate equipment and supplies or make a donation or get involved in a sponsored event to help raise funds please visit our website on the contact us page or email dentech.chair@gmail.com

Those that actively support us also get the exclusive use of our supporter's logo to display on their web pages, literature,

Facebook pages etc so please look out for this as you will know that each one of them is a good person/company who has gone out of their way to help make this world a better place by helping us to restore lives one smile at a time.

If you would like to become one of our supporters and also receive your copy of our supporter's logo please do not hesitate to get in touch and see in which ways you can help, it is together that we are stronger and together that we can make a difference to the lives of those less fortunate.

Please visit us on our website: www.den-tech.org



L to R Bob Williams, Andrea Johnson, Delroy Reeves, Edward Mapley, Jade Oakes Stott and Andrew Sinclair

Aidite
Revolutionary Material for CAD/CAM
3D Multilayer
MORE THAN NATURE

NEW

>600Mpa
↓
>900Mpa
Strength

57%
↓
43%
Color

Transparency

All in One

Anterior Crown, Posterior Crown, Veneer, Implant, Bridge, Full Arch Bridge

Aidite
Visit us at Booth B10 & B12
E-mail: shanelee@superfectzir.com
en.aidite.com

3Shape TRIOS MOVE
Excite patients and advance case acceptance

Visit us at Stand **D24**

Provide better preventative care with 3Shape TRIOS Patient Monitoring

Show patients their future smile with 3Shape TRIOS Smile Design

Grow orthodontic treatments with 3Shape TRIOS Treatment Simulator

3shape

VITA

WHY DON'T YOU EXCELL?

VITAPAN EXCELL®

ANTERIOR TEETH

For brilliant vitality of shape, shade and play of light

- ▶ Lifelike three-dimensional tooth geometry for brilliant results
- ▶ Distinctive incisal characteristics for special vitality
- ▶ Wide palatal bars for ideal interdental spacing / papilla creation
- ▶ Pronounced enamel portion / translucent edges for good light dynamics
- ▶ Nuance-rich surface texture for lifelike play of light
- ▶ Integrated mamelon structure and whitish incisal region for natural shade effect
- ▶ 3D layered structure for natural shade gradient

22 moulds used in combination with Vitapan® Lingoform or any posterior system

VITAPAN® LINGOFORM Posterior teeth

For all concepts of occlusion due to multifunctional occlusal surface design

- ▶ Three-dimensional tooth geometry with natural lingobuccal dimension
- ▶ Multifunctional occlusal surface design with defined centric contacts
- ▶ Finely nuanced surface texture for natural play of light
- ▶ Maxillary cusp angle: approx. 15° to 20°

4 upper and 4 lower moulds



INCREDIBLE DTS OFFER

— CAN ONLY BE ORDERED ON
MAY 18TH OR 19TH

ORDER ANY 50 SETS OF VITAPAN
EXCELL® AND GET

**30 SETS OF VITAPAN®
LINGOFORM FREE**

AND WE WILL EVEN INCLUDE A
FREE TOOTH CABINET
SHIPPED DIRECTLY TO YOUR
DOOR*

0800 0092 444

WHW Plastics Ltd

Therm Road, Hull, East Yorkshire, HU8 7BF UK
tel +44 (0)1482 329 154 • fax +44 (0)1482 217140
email: sales@whwplastics.com
website: www.whwplastics.com

With
1000's of sets in
stock, next day delivery
& free mould charts –
we offer the service
you expect



**special terms and conditions apply,
please ask for more information*

whw
Behind every smile

Exhibitor profiles

Bracon

Bracon welcomes the entire Dental Team, with items such as dental chairs, cabinetry, digital printers and scanners as well as a spotlight on the very latest developments.



Bracon began life in 1952 and has grown into one of the best known independent dental supply and distribution companies in the UK.

As the Dental Industry leaps forward into the digital age, Bracon continues to be at the forefront with a wide range of exceptional digital equipment, materials and associated products.

Visit us on stand H15

Solvay Dental

New from Solvay Dental 360™ USA, Ultaire™ AKP is an innovative aryl ketone polymer (AKP) formulated to meet critical performance requirements for dental applications.



Available as the first product in the Dentivera™ milling disc family, Ultaire™ AKP supports a fully digital workflow and provides a biocompatible, lightweight, metal-free, non-irritating and more aesthetically pleasing alternative to traditional metal removable partial denture (RPD) frames. Labs can qualify to mill the FDA 510(k)-cleared Dentivera™ discs by completing a Solvay Dental 360™ qualification process – which includes viewing training modules. The company also offers marketing support materials. Solvay Dental 360™ is a new business line of Solvay Specialty Polymers USA, LLC, a global leader in high-performance healthcare polymers. www.SolvayDental360.com

Visit us on stand E25

Solvay Dental

Ultaire™ AKP for Removable Partial Dentures

New from Solvay Dental 360™ USA, Ultaire™ AKP is an innovative aryl ketone polymer (AKP) formulated to meet critical performance requirements for dental applications.

Available as the first product in the Dentivera™ milling disc family, Ultaire™ AKP supports a fully digital workflow and provides a biocompatible, lightweight, metal-free, non-irritating and more aesthetically pleasing alternative to traditional metal removable partial denture (RPD) frames. Labs can qualify to mill the FDA 510(k)-cleared Dentivera™ discs by completing a Solvay Dental 360™ qualification process – which includes viewing training modules. The company also offers marketing support materials. Solvay Dental 360™ is a new business line of Solvay Specialty Polymers USA, LLC, a global leader in high-performance healthcare polymers. www.SolvayDental360.com

Visit us on stand E25

VITA

VITA even closer to You: Your trusted partner in the UK



VITA has been the reliable partner of technicians and dentists around the globe for over 90 years, providing both materials and technology. VITA's aspiration is to inspire and support professionals to be able to deliver the most esthetic, functional and long-lasting restorations with an efficient protocol to their patients. To accomplish this mission, VITA provides precise communication means between the dental lab and practice, based on an accurate digital and visual tooth shade determination. With its high quality, metal-free restoration materials and reliable equipment for shade reproduction, VITA enables technicians and dentists to achieve clinical and economic success. Get in touch with your 'perfect match' on Facebook or get more detailed information from our representatives and on www.vita-zahnfabrik.com.

Visit us on stand F01

Straumann

Seeing is believing



Straumann presented a myriad of ground-breaking innovations at The Dentistry Show 2017.

As dentistry embraces the digital age like never before, this year's Dental Technology Show provided a host of opportunities as Straumann unveiled a number of exciting developments to their CARES® Digital Solutions portfolio, including leading scanning and milling technology, 3D printing and centralised milling.

Straumann® CARES® Digital Solutions combines interconnected software platforms, open and fully validated workflows alongside a wide variety of materials to offer:

- Straumann® CARES® D Series Milling Unit
- Straumann® CARES® C Series Milling Unit
- Straumann® CARES® P Series 3D Printer
- Straumann® CARES® Desktop Scanner Series

This exciting digital portfolio combines interconnected software platforms, open and fully validated workflows alongside with a wide variety of materials - a true benchmark in digital dentistry.

By adding an all-encompassing digital dimension to our offering Straumann aim to be more than a dental implant company - we want to be your total solutions partner.

If you want to connect to any aspect of the Straumann CARES® Digital Solutions contact Straumann on 01293 651230 or visit Straumanndigitalperformance.co.uk to find out more.

Facebook: Straumann UK

Twitter: @StraumannUK

Visit us on stand C20

See the
past ...

Don't just tell your
patients they need
treatment.
Show them why.

iTero element.



... shape
the future.



See this breakthrough in action or schedule a demo at iTeroTimeLapse.com

©2018 Align Technology, BV, Arlandaweg 161, Amsterdam 1043 HS, Netherlands
All Rights Reserved. 201627 Rev A



dentaltechshow



Dental Technology Showcase



@dentaltechshow

Delegate Satisfaction Guarantee!

HERE'S WHAT YOU HAD TO SAY...

We attend together to look around the trade show, with a particular interest in new technologies. Looking at scanners has been a priority this year, and it's been a good opportunity to compare products. Attending shows like this is so important to stay up-to-date with what's new. Stuck in the surgery or lab you just don't get the chance to have these meaningful business conversations.

Harj Singhrao, Principal Dentist, Newbridge Dental Care & Alexander Mensikov, Dental Lab Owner, AM Dental Lab

We're here to spend. This year we are looking at denture products, scanning, and any new machinery. We've also signed up for a few training courses. The conference programme is a great education platform, and there's been interesting CAD/CAM sessions. This is the only show we attend as it ticks all the boxes for keeping up-to-date.

Michael Doel, Lab Owner, Michael Doel Lab & Tony Oswin, Dental Lab Owner, Unique Dentures

I like to look at everything from the suppliers to the CPD lectures. I've been to some implant sessions and a few on composites, which have all been very helpful. I think it's important for businesses to learn and get updates on different materials. I'm impressed with the 3D printers and it's been such a benefit learning straight from the suppliers. I'd definitely recommend the event and I'll be back next year.

Sadia Muddsar, Dental Technician, Hira Dental Lab



The CAD/CAM sessions have been very interesting for us, and the talks have discussed some great topics. We have learnt about new techniques and products. We'd definitely recommend the event and we'll be back next year.

Jamie Sawdon, Dental Technician, PDS & Thomas Kwok, Dental Technician, Simpler Dental Ceramics



This is my first time at the event, and I came looking for training. I just saw Mark Bladen do a build up on the GC stand, which was very useful. There's a little bit of everything, from the hands-on side to more technical things. The 3D printing stalls are really impressive and it's nice to see a variety of these products.

I'd definitely recommend to others in the profession – it's very worthwhile. I'm really happy with everything so far and look forward to spending the rest of my day looking around.

Sheryl Bishop, Student Dental Technician, K2 Ceramic Studio



We're seasoned in the industry and we're not easy to impress but this is truly the best exhibition for the dental tech sector. The content is excellent, particularly in CAD/CAM – which we're looking at making decisions on. We came here specifically to look at new products and there's more than we can get around to be honest! The event is great as we're usually bored at exhibitions by this point but there's so many impressive stands to get around. In fact, we've got to head off now and see more!

Robin Kerwick & Steve Rogers, Owners, Kerwick and Rogers Dental Laboratory



I think the co-location with Dentistry is quite novel and it has made the event a lot better. I come to speak to the suppliers – I manage labs so it's a good opportunity to come and talk to the reps. I'm always impressed with the range of products here. Tomorrow I'm going to come back and pick up some CPD. I always recommend the shows to my colleagues, and bring as many with me as I can.

Gregg Clutton, Technical Team Lead, Manchester Metropolitan University



I come here to see the new products on the market and to meet up with people from the industry. I really like the merger between the dentistry and technology aspects as it's really relevant to my role. I have attended lectures on both sides. In fact, I'd like to see them integrated more.

Stephen Wears, Clinical Dental Technician, Your Smile Denture Clinic



I have come to attend lectures, particularly in the CAD/CAM theatre and look at the new products on the exhibition floor. The mixture of clinical and technical is the future – it provides a great education for the younger generation. Everybody is very approachable and what impresses me is that the lecturers actually tell the truth – they're realists and you get such a diversity of opinion. I'll definitely take a lot of new skills back to the lab.

Ian Greaves, Lab Owner, Greaves Dental Prosthetics



REGISTER FOR FREE AT WWW.THE-DTS.CO.UK/PAPER



dentaltechshow



Dental Technology Showcase



@dentaltechshow

SURGERIES • LABORATORIES • SUPPLY • DESIGN • PROJECT MANAGEMENT • SERVICING • REPAIRS • MAINTENANCE

The latest
DIGITAL
Dental Products
and specialist
service

SEE THE FUTURE
STAND **D14**

BLUEPRINT DENTAL

Better products. Better dentistry.

www.blueprintdental.co.uk