

Useful numbers / information



Fire

0121 767 3333
Internal 3333



Medical

0121 767 2222
Internal 2222



Security (Emergency only)

0121 644 6666
Internal 6666



NEC switchboard
0121 780 4141



Taxi
0121 427 8888 or
0800 0142 729
(freephone)



Lost property
0121 767 3883



Security (general)
0121 767 2393/2595/2797



Products & Services
For all exhibitor enquiries,
orders & support, contact
our Sales & Customer
Support team on:
0844 338 8338



Traffic
0121 767 2612



Ticket Factory
Why not see a show
whilst you're here:
0844 338 8000

Get
social
with the **NEC!**



/NECBirmingham



@thenec



#necbirmingham



/the-nec-birmingham



/thenecbirmingham



For more information
please visit our website:
thenec.co.uk

In the know

Welcoming exhibitors
to the **NEC**

Important
information
and discounts
inside

Edition 12

Your award-winning venue



VENUE OF THE YEAR
2018 AND 2016



VENUE TEAM OF THE
YEAR 2018 AND 2017



INNOVATION AWARD



BEST VENUE



**NATIONAL
VENUE
AWARDS**

MOST VERSATILE VENUE



UFI OPERATIONS & SERVICES AWARD 2017



03 Welcome

04-05 Exhibitor news from around the NEC

06-07 Traffic Management at the NEC

08-09 Making sure you're safe and secure

10 Emergency announcements

11 Exhibitor Feedback

12-13 Keep an eye on things...

14-15 Planning for next time?

17 Great deals for meetings, conferences & events

18-19 What's on...

20 Media & marketing

21 Catering offers

22 On stand catering

23 Getting around the NEC

Hello

As we firmly settle ourselves into 2019, I'd like to extend a warm welcome to you for our latest edition of In The Know. Whether this year will be your first time visiting the NEC or you're a seasoned guest, we hope that your time with us goes above and beyond all expectations.

This point in the year is usually used as a time for reflection and as a business we are very proud of our achievements; 2018 was another year of great change for us, as the NEC campus continued its transformation into a 24/7 destination. The Bear Grylls Adventure came to fruition, work on the 224-bedroom Moxy hotel – adjacent to Hall 5 – began, and our £4.5million facelift was revealed.

Here at the NEC we're more about looking forward though than back, with a relentless drive to ensure your next visit to us is the very best it can be. At a time of uncertainty as we wait to see what Brexit will mean for us all as businesses in the coming months and years, we want to ensure that you're as prepared as possible for your time with us. No surprises, just the ability to utilise your event space with us as effectively as possible. We understand the importance of maximising your time on site, so there's a whole host of options now available to you, including our latest Commercial Graphics Service (read more on page 4).

Plans for HS2 are continuing to move at pace, with the NEC due to play host to an automated people mover (APM) between campus and the HS2 Interchange Station on the other side of the M42. As the future backbone of our national railway system, HS2 will help you get to us quicker and easier.

We've also been listening to you throughout 2018 and as a result the venue is also becoming eco-friendlier – reducing packaging and turning towards more LED lighting.

The 2019 events calendar is set to be another busy and varied one, full of opportunity; So, sit back, take five, and read up on the latest news from us here at the NEC. As always if you need any support or guidance ahead of your visit, please do not hesitate to get in touch with the team.

Here's to looking forward and working on some fantastic events!



Kathryn James
Managing Director,
NEC Group – Conventions
& Exhibitions



Please send us your feedback to: exhibitorfeedback@thenec.co.uk

Stand out from the crowd!

Our brand new Commercial Graphics service is now live! Especially created to support your visit to the NEC.

We now provide a design, production and installation graphics service managed right here on-site, to create cost-effective stand enhancement solutions. You can either supply your own print ready artwork or we can organise the design – it's completely up to you.

With a range of graphic options available, from fascia overlay panels and lino on your stand to banners and tension frame cubes to hang above, we'll make your exhibit area really pop.

Jane Carter, Head of Commercial Graphics at the NEC said: "We're really excited to offer this new service for 2019. We're helping to take the stress out of your event preparation, having taken great care in ensuring that the process is seamless and as quick as possible. We have standard and bespoke graphic options available, so let's see how we can help you."

So wave goodbye to uninspiring stand shells and see how we transform them into vibrant and fully branded masterpieces!

To get your hands on an information pack, contact the Sales and Customer Support team on +44 (0)844 338 8338 (option 1) or email: eventorders@thenec.co.uk



NEC Chaplaincy

Chaplaincy is a central part of the Wellbeing suite of support offered by the NEC Group – providing an open-door policy to all exhibitors, organisers and visitors.

The Chaplaincy team is helped by several specialist faith volunteer members from a wide and inclusive platform, all of whom happy to have a quiet and discreet conversation with you. Whether you need private space

to pray, need someone impartial to talk to or simply need a break from the hustle and bustle of your exhibition, everyone is welcome.

The main Chaplaincy office is situated within the NEC Piazza with a Prayer/Quiet room next door. There is also a second Prayer/Quiet Room on the other side of the venue within the NEC Atrium.

Prayer/Quiet rooms are generally open during normal working/venue opening hours.

If you would like to find out more about this service or check that a specific team member/prayer room is available when you are with us, please contact our lead Chaplain, David Butterworth, on 0121 767 2911 or email david.butterworth@necgroup.co.uk.

GET A TASTE OF The Bear Grylls ADVENTURE

The Bear Grylls Adventure got under way two weeks early on the campus - delighting a specially invited audience at its grand opening.

We've all been looking forward to sampling the action and wow, it's an exhilarating, exciting and super challenging experience that's like nothing else on earth... as you would expect from the greatest adventurer of our time, the amazing Bear Grylls.

This £20million, 8000 square metre attraction from Merlin Entertainments brings thrills on a grand scale, making it a completely different approach to networking and teambuilding – or a brilliant way to entertain the team after a busy day on the floor.

Bring out the adventurer in you, with a line-up of action that can't be missed! Here's a quick taste of what's on offer...

THE ADVENTURE BEGINS... As you emerge from the entry under a Chinook helicopter into a jungle setting complete with a plane crashed into a tree! At Basecamp, you can hone your adventurer skills in a series of mental and physical challenges.

From then on, there's a number of paths you can take, from zip-wiring out of the Chinook to the hair-raising high rope frame with a series of obstacles and hazards to overcome... to indoor skydiving, underwater diving with the sharks, wall climbing and an assault course, archery, survival maze and code-cracking escape rooms.

The Bear Grylls Adventure is, in Merlin's words, a world first where you can 'test your limits as you take on some of the world's most incredible mental and physical challenges inspired by Bear's love of adventure.' You can take it from us, those limits certainly get tested - and it is an absolutely brilliant experience (ending in well-earned refreshment - maggots optional!).

To find out more about teambuilding and networking at The Bear Grylls Adventure, email info@beargryllsadventure.com



New food outlet opens at Resorts World

Local Indian burrito favourite, Wrapchic, has joined the ever-growing foodie line-up over at Resorts World, following Zizzi and Miller & Carter last year.

Great for a quick bite for lunch or before a show, this is Indian food, done differently. Whether you're a meat eaters, vegetarian or vegan, there's plenty of options on filling, all wrapped up in a burrito, naan, scooped up onto rice and salad or even 'wrapchos' – the Indian take on nachos. Wrapchic is tucked just inside the entrance opposite the Arena, opposite Phase Eight.





Diverted traffic

Why do I get diverted off the NEC site a different way?

The NEC site is fortunate to sit in the centre of the midlands motorway network. This unrivalled connectivity contributes to our collective success. However, occasionally incidents outside of our control can cause significant disruption on the network and in turn our site.

Working in partnership

Our Site Operations Centre continually monitors traffic conditions in and around our site with extensive CCTV coverage. They receive alerts to incidents on the motorway network directly from Highways England and are in regular direct contact with their Regional Control Centre.

The NEC has a partnership agreement in place with Highways England to help manage event traffic to and from the NEC. This includes pre-event signing to provide advance notice of major events to the travelling public, specific traffic management plans to bring traffic on to site using different routes and pre-determined response plans to deal with abnormal incidents.

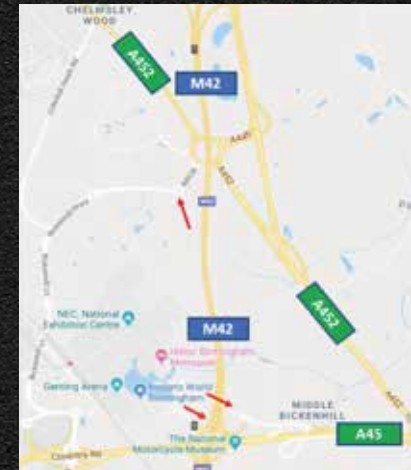
Dealing with abnormal incidents

Should an abnormal incident occur that is likely to impact the egress off site, the Site Operations Centre will invoke a number of pre-agreed responses. These are designed to prevent the situation from worsening (total lock up) and to keep traffic moving.

Our primary aim is to prevent a total lock up of M42 J6 island. If this does lock up recovery can take several hours.

DID YOU KNOW?

The NEC Site Ops Centre can change motorway signs to bring traffic onto site along different routes?



Diversions

To mitigate against a lock up it is sometimes necessary to divert traffic away from the island. By removing our traffic this can help avoid or release a lock up. If this is the case, we will divert off site via the Eastway and the North Way. We must make this decision quickly. If we don't then any tailback from J6 and Southway, will quickly block the Eastway exit route too.

If you are diverted to use an alternate route off site, don't worry. The surrounding network has excellent connectivity back to the key network routes.

For example, if you are diverted off site via the Eastway, at Stonebridge island you can turn left for the M6 and M42 N or right for M42 S. If you are diverted off site via the North Way you can use the A452 S and A45 to get to M42 S or the A446 to get to the M6 or M42 N.

On occasion, we may be able to open up the Southway for traffic to access M42 N only, using an agreed Highways England plan. Please note if these signs are displayed and you do take this route there is no turning back, you will end up on the M42 N.

What to do if there is significant congestion on surrounding roads



There are occasions where the adverse traffic conditions can cause all surrounding roads to become congested as people "rat run" to avoid incident hotspots. There is nothing we can do about this.

Our advice is, once off site try to take as wider birth as possible to circumnavigate the congested area and re-join your preferred route further away.

Our team have your best interests at heart

Our Site Operations Centre and Traffic Staff will always be doing their best to help you and this may mean sending you in a direction you would not prefer but please trust them they can see the bigger picture and will be operating as part of a much wider plan.

DID YOU KNOW?

NEC Traffic Officers are Law Enforcement Officers empowered by a special act of parliament? They are legally empowered to enact certain sections of the road traffic act. These powers are always used as a last resort.



Making sure you're safe and secure

Naturally, you want to be sure that you and your staff are working in a safe and secure environment. And with so many people involved in every exhibition, it's important that everyone adheres to a few simple guidelines and rules – so they can all get on with enjoying the NEC experience.

Thank you for your co-operation!

1. Keep an eye open for unattended bags and packages



Please make the time to look in and around your exhibitor area regularly for unattended packages, cases or bags. Please check your stand each morning before the show opens. If you spot anything you don't recognise, don't touch it, call the Site Operations Centre on **0121 644 6666 (internal ext. 6666)** and we'll check it out for you.

When you leave your area each night, or if there's an evacuation, please ensure electrical appliances are switched off.

2. Please carry your pass at all times

To save time, avoid delays on entry and make your life easier, please keep your official identification pass with you throughout build up, open and breakdown.



3. Helping you get about safely and efficiently – our simple traffic rules



The last thing you'll want is to be held up in site traffic, or endangered during those busy build up, open and breakdown times. So please follow these few simple rules. They've been developed by our experienced NEC Traffic and Security team to ensure that all exhibitors can get about as safely and efficiently as possible.

- Please follow the instructions of NEC Traffic or Security staff.
- Look out at all times for fork lift truck movement.
- Don't park on red lines or yellow hatched areas unless given permission by NEC Traffic or Security staff for loading and unloading.
- Never park on red hatched areas.
- Wear a high visibility bib or jacket when loading or unloading. Be seen and be safe.

Please note: Failure to display a valid vehicle pass or to adhere to our traffic rules may result in vehicles being removed. Sorry, but our procedures are here to help you and all the other exhibitors have a great show. That's a lot easier when we all work together.

4. Security is Everyone's Business

We all have a part to play when it comes to security and we all need to play our part. Please remain vigilant at all times and report any suspicious activity to security immediately. If it looks out of place or the behaviour seems unusual, it probably is. Please go with that gut feeling and contact security. Our team would rather deal with hundreds of false alarms than miss a single real security issue. Please report a security emergency on **0121 644 6666**.

Emergency announcements and procedures

Okay, so emergency procedures may seem a bore – but it's essential that you and your team know what to do if anything untoward should happen, so we can all react efficiently and safely.

Emergency announcements

If you hear the following message followed by continuous chimes broadcast at half-minute intervals:

"Attention please. Staff call 100"

- Your team should immediately inspect your exhibitor area for suspicious items, or anything out of place or untoward. If anything is discovered please don't touch it – inform the Site Operations Centre on 0121 644 6666 (internal ext. 6666).
- The "Staff call 100" announcement also means that it MAY be necessary to clear the building.
- Please make your team aware, and stand by for further announcements.

If the issue has been dealt with the following message will be broadcast:

"Attention please. Cancel staff call 100"

Please ensure that your team is fully aware of these protocols – but don't tell the public what 'staff calls' mean as this may cause unnecessary concern and disrupt your business.

Evacuation procedures

If it becomes necessary to evacuate the building, the following message will be broadcast:

"Attention please, attention please. This is an important announcement. Circumstances make it necessary for everyone to leave the building. Please make your way to the nearest exit. Please note, your nearest exit may not be the one you came in."

Everyone must then leave the building by the nearest exit and, once outside, follow the instructions of venue staff who will direct you to the nearest assembly area.

Medical emergencies

In a medical emergency, call the Site Operations Centre on 0121 767 2222 (internal ext. 2222) giving the exact location of the casualty and details of any injuries sustained. Our team will arrange for all necessary assistance.

Fire procedures

The NEC and Resorts World Arena are protected by a sprinkler system and portable fire extinguishers. In the event of a fire emergency:

- Break the glass on the nearest fire alarm point – they're located at each vehicle entry door, in the organisers' offices, at key points within the hall and around the main Piazza and Atrium.
- Telephone the Site Operations Centre on 0121 767 3333 (internal ext. 3333) giving the location and nature of the incident.
- Calmly notify adjoining exhibitors of the situation and, if safe to do so, tackle the fire with an appropriate extinguisher. Remember, keep calm, follow these procedures and help will arrive as soon as possible.
- Leave by the nearest exit.

What did we do today to make you smile?

Let Team NEC know how we're doing and what we can do to make you smile even more

thenec.co.uk/feedback

Keep an eye on things...

We're pleased to say that crime levels at the NEC are very low, and we have extensive security measures in place. But as in every busy environment, it's important that you also take some simple measures to look after your property.

Follow these guidelines and you'll have peace of mind and security, which means you'll be able to focus fully on what you're with us for – getting on with business!

DO NOT leave your stand unattended during the show

Plan a staff rota organising how you are going to manage your stand at lunch time or any other times when you may need to leave – and have a back-up plan in place should you need to go unexpectedly.

Monitor the visitors to your stand

Keep an eye on who's visiting your stand. Do they look right? Ask if you can help them – or if you are worried, contact Security. Some people may try to distract you to steal using an accomplice, so be aware, and call Security if you have any doubts or worries.

Report all crime or concerns, no matter how small

We're always here to help – but we also need you to keep us up to date with what's been happening.

Think carefully about how and where you are storing any cash

Ensure you safeguard cash at all times including the breakdown. Opportunist thieves will watch what you are doing. Putting a cash box in a vehicle then leaving it unattended, leaves it vulnerable.

Intellectual property and copyright

If you don't want stock or stand photos taken, display a sign saying so. If your product design is valuable, protect it against copying or theft by being on the lookout for people taking photos, etc. and reporting any concerns immediately to Security.

Look after your smart phone or tablet

Keep them secure – they're an easy target for opportunist thieves.

Consider hiring a security officer for your stand

Hiring a security officer may not be as costly as you think – and can provide valuable cover at vulnerable times when you may not be present at your stand or are busy loading up during the breakdown. For more information ask to speak to your Security Event Manager by speaking to any of the security team.



Looking for free security advice?

We're more than happy to help.

Please contact our Site Operations Centre (SOC) on:

0121 767 2393 / 2595 / 2797 or
Email: NEC-Security@thenec.co.uk

On site Police Office 0121 767 3758 or
Email: police@thenec.co.uk

**West Midlands Police,
working in partnership
at the NEC**

nec
thenec.co.uk



Planning for next time?

Think about security when designing your stand

- ✓ Want a store or office on your stand? Make sure you can see the door when working on your stand. If you can't (i.e. it opens into a gangway) ensure it can be securely locked.
- ✓ Check that you can see all your displayed stock, and consider locking it away at night.
- ✓ Secure high value / high risk, easy to remove items to your stand using suitable locking devices.
- ✓ If you are handling cash, think about how you're going to safeguard it – putting it under a counter doesn't mean it is safe! Use suitable tills or cash boxes, secured to your stands.
- ✓ If you'd like some advice about what locks, tills and boxes to use just ask – we're here to help you.
- ✓ It's easier if you prepare properly in advance, so talk to us at the planning stage.

Fit cupboards or lockable units with non-generic locks

In large exhibitions contractors may use cupboards with generic or flimsy locks to keep costs down. Make sure you ask for an upgraded lock which is non-generic – it's well worth paying a little bit extra.

Think about hiring a static guard

Cover for a pre-clean evening during the later stages of build-up, when others may still be in the Hall, can be as little as £60. Remember to book early though!



...there's loads of useful information for exhibitors on our website? Visit www.thenec.co.uk/exhibitors



capture it on
camera
with dedicated CCTV
for your stand.

Why not enhance your stand security, by hiring dedicated CCTV cameras? We'll install and remove them for you and record all images securely. It's as simple, and safe, as that.

Call us for more information:
0844 338 8338

yes, really!



20% OFF
ADVANCE FARES*

*Must be booked at least 3 days in advance

**BECAUSE
WE'RE PALS
WITH THE NEC**

Book now at virgintrains.co.uk/nec



MAKE THE MOST OF THE NEC

Planning a meeting, presentation or reception before, during or after your show? You're in the right place!

- 32 purpose-built conference suites
- From buffets to banquets - award-winning in-house catering
- Dedicated and experienced on-site event team

Discover what the NEC team can do for you.

DON'T JUST TAKE OUR WORD FOR IT...

"We have worked with the NEC over the past 10 years, holding both our annual conference and Business Excellence Awards Evening.

The facilities are fantastic, the NEC staff are extremely accommodating and are a key factor in the success of both of these events. The suites are the perfect size, are in a great location for our guests and allow us enough space to create the perfect atmosphere."

Helen Jones, Project Manager
Motorsport Industry Association

Email venue sales at: nec-conferences@necgroup.co.uk or call: 0121 767 2782

Take advantage of



EXHIBITOR
ADVANTAGE

...and get guaranteed
parking behind
your hall!

To park behind your
hall tomorrow visit:

www.thenec.co.uk/advantage



What's on...

The following pages show a selection of exhibitions and concerts taking place at our venues over the coming months. It details show open days only and does not include build and break down.

PLEASE NOTE: The information contained in this list is correct at the time of going to print. Whilst every effort is made to ensure it is accurate there may have been changes made since that time. If you are unsure of any of the details then please call ext. 73697 to confirm.

This information is available to visitors at www.necgroup.co.uk.

EVENTS AT THE NEC

FEBRUARY 2019

SPRING FAIR INTERNATIONAL
HALLS 1 – 12 & 17 – 20
03 – 07 FEB
(VOLUME SECTOR - 02 FEB)
TRADE

TOY COLLECTORS FAIR
HALL 18
10 FEB
PUBLIC

GREAT BRITISH SHOOTING SHOW
HALLS 6 – 9
15 – 17 FEB
PUBLIC

THE NATIONAL FRANCHISE EXHIBITION
HALL 10
15 – 16 FEB
PUBLIC & TRADE

CRAFT, HOBBY & STITCH INTERNATIONAL
HALL 12
17 – 19 FEB
STRICTLY TRADE

MODA UK
HALLS 17 – 20
17 – 19 FEB
TRADE

CARAVAN, CAMPING & MOTORHOME SHOW 2019
HALLS 1 – 5
19 – 24 FEB
PUBLIC

PACKAGING INNOVATIONS, EMPACK AND LABEL & PRINT
HALLS 9 – 10
27 – 28 FEB
TRADE

MARCH 2019

WHAT CAREER LIVE? WHAT UNIVERSITY LIVE?
HALL 17
01 – 02 MAR
PUBLIC

THE NATIONAL WEDDING SHOW
HALL 4
01 – 03 MAR
PUBLIC

HEMP & CBD EXPO
HALL 18
02 – 03 MAR
PUBLIC & TRADE

HEALTH & WELLBEING AT WORK
HALL 7
05 – 06 MAR
TRADE

CRUFTS
HALLS 1 – 5 & ARENA
07 – 10 MAR
PUBLIC

NURSING CAREERS & JOBS FAIR BIRMINGHAM
HALL 10
12 MAR
TRADE

THE BIG BANG FAIR
HALLS 17 – 20
13 – 16 MAR
PUBLIC

THE CREATIVE CRAFT SHOW
HALL 11
14 – 17 MAR
PUBLIC

SEWING FOR PLEASURE INC FASHION & EMBROIDERY
HALL 12
14 – 17 MAR
PUBLIC

THE PHOTOGRAPHY SHOW (WITH THE VIDEO SHOW)
HALL 5
15 – 19 MAR
PUBLIC & TRADE

BRITISH TOURISM & TRAVEL SHOW
HALL 8
20 – 21 MAR
TRADE

UK CONCRETE SHOW
HALLS 17 – 18
20 – 21 MAR
TRADE

PRACTICAL CLASSICS CLASSIC CAR & RESTORATION SHOW
HALLS 3 – 5
22 – 24 MAR
PUBLIC

MCM COMIC CON BIRMINGHAM
HALLS 9 – 12
23 – 24 MAR
PUBLIC

EUROPEAN NEURO CONVENTION, EUROPEAN ONCOLOGY CONVENTION, MEDICAL IMAGING CONVENTION
HALL 20
26 – 27 MAR
TRADE

DEMENTIA CARE & NURSING HOME EXPO
HALL 19
26 – 27 MAR
TRADE

SMART HOME FOR ASSISTED AND INDEPENDENT LIVING
HALL 8
26 – 27 MAR
TRADE

NAIDEX
HALLS 6 – 7
26 – 27 MAR
TRADE

DPRT LIVE
HALL 3A
28 – 31 MAR
TRADE

NATIONAL HOMEBUILDING & RENOVATING
HALLS 9 – 10
28 – 31 MAR
PUBLIC

NATIONAL ENGINEERING & CONSTRUCTION RECRUITMENT EXHIBITION
HALL 19
29 – 30 MAR
PUBLIC

MINIATURA – THE DOLLS' HOUSE SHOW
HALL 8
30 – 31 MAR
PUBLIC

OPTRAFAIR
HALLS 6 & 20
30 MAR – 01 APR
TRADE

APRIL 2019

TRAFFEX & PARKEX
HALL 5
02 – 04 APR
TRADE

SIGN & DIGITAL
HALL 3 & 3A
03 – 04 APR
TRADE

INTERNET RETAILING EXPO & E DELIVERY EXPO
HALL 2
03 – 04 APR
PUBLIC

ANTIQUES FOR EVERYONE
HALLS 17 – 18
04 – 07 APR
PUBLIC

CIH
HALL 1
07 – 08 APR
TRADE

FARM SHOP & DELI SHOW
HALL 19 & 20
08 – 10 APR
TRADE

NATIONAL CONVENIENCE SHOW
HALL 19
08 – 10 APR
TRADE

THE FORECOURT SHOW
HALL 19
08 – 10 APR
TRADE

THE INGREDIENTS SHOW
HALL 20
08 – 10 APR
TRADE

THE HEALTH & SAFETY EVENT
HALL 12
09 – 11 APR
TRADE

THE SECURITY EVENT
HALL 10
09 – 11 APR
TRADE

THE FACILITIES EVENT
HALL 11
09 – 11 APR
TRADE

KIDTROPOLIS
HALL 3
13 – 15 APR
PUBLIC

TOY COLLECTORS FAIR
HALL 18
14 APR
PUBLIC

INSOMNIA 64
HALLS 1 – 4
19 – 22 APR
PUBLIC

THE COMMERCIAL VEHICLE SHOW
HALLS 3 – 5
30 APR – 02 MAY
TRADE

MAY 2019

THE VAPER EXPO UK (SPRING)
HALLS 17 – 20
03 – 05 MAY
PUBLIC

BODYPOWER
HALLS 6 & 17 – 20
10 – 12 MAY
PUBLIC

MAKERS CENTRAL
HALL 2
11 – 12 MAY
PUBLIC

UK BRIDAL WEEK
HALL 1
12 – 14 MAY
PUBLIC

RAILEX
HALLS 3 – 3A
14 – 16 MAY
TRADE

MED TECH INNOVATION EXPO
HALL 2
15 – 16 MAY
TRADE

PRIMARY CARE & PUBLIC HEALTH
HALLS 7 – 8
15 – 16 MAY
TRADE

What's on...

THIS MORNING LIVE
HALLS 11 – 12
16 – 19 MAY
PUBLIC

THE DENTISTRY SHOW & THE DENTAL TECHNOLOGY SHOWCASE
HALL 5
17 – 18 MAY
TRADE

THE BABY SHOW
HALL 4
17 – 19 MAY
PUBLIC

BEAUTY UK INC HOLISTIC HEALTH, HAIR UK & BARBER UK
HALLS 17 – 19
19 – 20 MAY
TRADE

FIT SHOW
HALLS 6 – 7 & 20
21 – 23 MAY
TRADE

EDIE LIVE & UTILITY WEEK LIVE
HALL 3
21 – 22 MAY
TRADE

UK GAMES EXPO
HALLS 1 & 2
31 MAY – 02 JUN
PUBLIC

JUNE 2019

COLLECTORMANIA 26 - FILM & COMIC CON BIRMINGHAM
HALL 5
01 – 02 JUN
PUBLIC

AUTOMECHANIKA BIRMINGHAM
HALLS 6, 18, 19 & 20
04 – 06 JUN
TRADE

COMMERCIAL KITCHEN 2019
HALL 8
04 – 05 JUN
TRADE

SUBCON, ADVANCED MANUFACTURING, THE ENGINEER EXPO
HALL 3
04 – 06 JUN
TRADE

THE GENEALOGY SHOW
HALL 2
07 – 08 JUN
PUBLIC

BBC GARDENERS' WORLD LIVE
HALLS 17 – 20
13 – 16 JUN
PUBLIC

BBC GOOD FOOD SHOW SUMMER
HALLS 17 – 20
13 – 16 JUN
PUBLIC

MULTIMODAL 2019
HALL 4
18 – 20 JUN
PUBLIC

UCAS BIRMINGHAM HIGHER EDUCATION EXHIBITION
HALL 3A
24 – 25 JUN
PUBLIC

THE BIG EVENT, BIRMINGHAM
HALLS 17 & 18
28 – 29 JUN
PUBLIC

THE CREATIVE CRAFT SHOW SUMMER
HALL 12
28 – 30 JUN
PUBLIC

THE DATING SHOW LIVE
HALL 3A
29 – 30 JUN
PUBLIC

JULY 2019

UK AD AND WORLD BIOGAS EXPO
HALL 3
03 – 04 JULY
TRADE

WORLD BIOGAS SUMMIT
HALL 3
03 – 04 JULY
TRADE

AUG 2019

THE FESTIVAL OF QUILTS
HALLS 7, 8 & 9
01 – 04 AUG
PUBLIC

SEP 2019

CONTAMINATION EXPO SERIES
HALL 5
11 – 12 SEP
TRADE

RWM - RECYCLING & WASTE MANAGEMENT EXPO
HALLS 4 & 5
11 – 12 SEP
TRADE

FUTURE RESOURCE
HALLS 4 & 5
11 – 12 SEP
TRADE

THE EMERGENCY SERVICES SHOW
HALL 5
18 – 19 SEP
TRADE

IMHX
HALLS 6 & 18 – 20
24 – 27 SEP
TRADE

EVENTS AT RESORTS WORLD ARENA

POST MALONE
16 FEB

THE X FACTOR LIVE TOUR 2019
17 FEB

STEELY DAN
23 FEB

TWENTY ONE PILOTS
27 FEB

BILL BURR
01 MAR

ASHA BHOSLE
02 MAR

CRUFTS 2019 AND BEST IN SHOW
07 – 10 MAR

BLUE PLANET II
16 MAR

GEORGE EZRA
17 MAR

GYMNASTICS WORLD CUP
23 MAR

40 YEARS OF DISCO 2
24 MAR

BUSTED
29 MAR

THE WONDERFUL WORLD OF DISNEY ON ICE!
03 – 07 APR

LEGEND LIVE
12 APR

DARYL HALL & JOHN OATES
24 APR

OLLY MURS
10 – 11 MAY

WWE LIVE
15 MAY

AN EVENING WITH MICHAEL BUBLÉ
20 – 21 MAY

HUGH JACKMAN: THE MAN THE MUSIC. THE SHOW
27 – 28 MAY

MARK KNOPFLER
30 MAY

MRS BROWN'S BOYS D'MUSICAL
21 – 23 JUN

LYNYRD SKYNYRD
30 JUN

RUSSELL HOWARD
22 SEP

EVENTS AT ARENA BIRMINGHAM

MÜLLER INDOOR GRAND PRIX BIRMINGHAM
16 FEB

CITY OF BIRMINGHAM GAMES
17 FEB

FATBOY SLIM
22 FEB

PROFESSOR BRIAN COX LIVE
23 FEB

YONEX ALL ENGLAND OPEN BADMINTON CHAMPIONSHIPS
06 – 10 MAR

NICKI MINAJ & FUTURE
14 MAR

THE WORLD OF HANS ZIMMER
21 MAR

DREAM EXTREME: SUPER REGIONAL CHAMPIONSHIPS
23 – 24 MAR

PANIC! AT THE DISCO
26 MAR

UB40 FEAT ALI CAMPBELL & ASTRO
29 MAR

SHAWN MENDES
09 APR

PREMIER LEAGUE DARTS 2019
25 APR

THE ORIGINAL HARLEM GLOBETROTTERS
02 MAY

THE VAMPS
03 MAY

FREE RADIO HITS LIVE 2019
04 MAY

TAKE THAT
12 – 14 MAY, 16 – 18 MAY, 19 MAY

BILL BAILEY
23 MAY

ALICE IN CHAINS
24 MAY

RITA ORA
25 MAY

ESL ONE BIRMINGHAM
31 MAY – 02 JUN

BACKSTREET BOYS
15 JUN

WESTLIFE
21 – 23 JUN

EAGLES
28 JUN

IL DIVO
29 JUN

KISS
09 JULY

BIANCA DEL RIO
05 SEP

ARIANA GRANDE
14 – 15 SEP

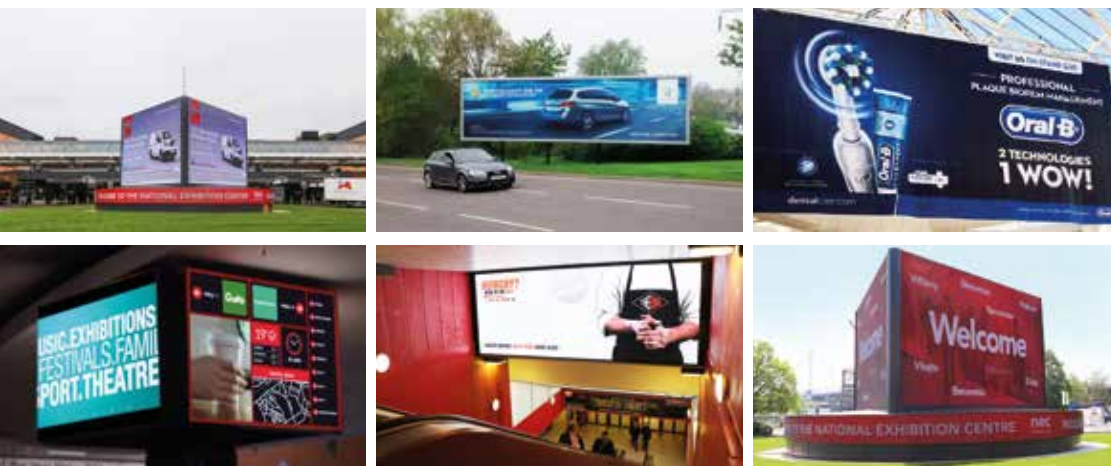
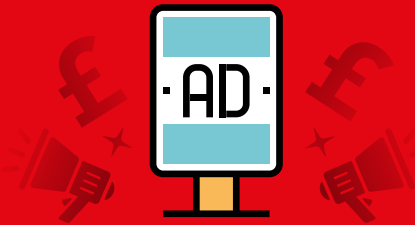
THE KING IS BACK – BEN PORTSMOUTH IS ELVIS
22 SEP

For the most up to date listings please visit resortsworldarena.co.uk or www.arenabham.co.uk

Media, Branding & Advertising

DRAW VISITORS TO YOUR STAND WITH **IMMERSIVE ADVERTISING** WITH THE NEC

Make the ultimate impact with show visitors by utilising the NEC's latest innovative advertising solutions. Expand your presence and gain a real edge over competitors. Be the brand they'll never forget.



Embrace digitalisation with our state-of-the art digital display screens, acting as a beacon to your stand and raising your brand's profile with visitors the moment they arrive at the venue.

Timely communication will ignite customer interest and increase their sense of arrival and anticipation, allowing you to strike the attention of visitors whilst they're at their most receptive and curious. For more information on how you can enhance your stand's presence at your next exhibition, call us today.

**CONTACT US FOR A COPY
OF OUR MEDIA PACK**

0121 767 2543
NICOLA.BURNER@NECGROUP.CO.UK

Catering offers

Tuck into a great food experience.

There's so much on the menu for you and your visitors – from fantastic food delivered direct to your stand to feed the team or entertain your customers, to quality food on the go.

Take a break in one of our in-hall restaurants, or grab coffee and a snack on the go from Starbucks. There's so much to choose from!

And after a busy day at an event, you can always relax and unwind – or talk business with your customers – over a drink at Wetherspoons.

Ask any member of staff to find out more about places to eat and drink at the NEC. Our food outlets open around the show timetable and may vary.

Beat the queues by pre-ordering your Starbucks, giving you more time to spend on your stand. Place your order and pick up from your selected location where your drinks will be available.



**Place your
order now**

uk.qjacker.com



**15%
discount**
with a spend of
£10 or more

Offer valid per transaction at NEC on-site restaurants including NEC Food and Bar, The Oak Kitchen, The Edge, Starbucks, Subway, FCB Artisan Espresso Bars, The Cornish Bakery, Wetherspoons and Cook Street.



**Exhibitor
dessert special**
Buy any hot main course
and get any dessert for
£2.50

Offer valid 12:00-3:00pm at any NEC on-site restaurants including NEC Food and Bar, The Oak Kitchen, the Edge and NEC self service restaurants located within the show halls.



**the nec
food & bar**

On stand catering

Too busy doing business?

Let us come to you

For the ultimate

convenience, food to you will deliver food and drink directly to your stand at a time that suits you. They can provide a selection of platters through to the hire of glassware and crockery.

Call 0844 338 8338



If you require

hospitality staff to serve food and drink at your stand, then Served to you is an ideal choice. They can provide savoury bites and canapés through to hot fork buffets and bowl delicacies.

Call 0121 780 4141 and select option 5 to speak to NEC Catering team, Amadeus.

Providing hospitality is a great way to engage visitors and increase dwell time on your stand

* Terms and conditions

- Not valid with any other offer
- Only valid at participating restaurants or cafés
- Discount not available on orders placed via QJacker
- Subject to availability and restaurant opening times
- Excludes any Food Markets and in hall temporary catering units
- Excludes premium meals
- This voucher must be surrendered at the time of redemption
- The voucher cannot be exchanged for cash
- The value of this voucher equals 0.001p

- The NEC Group will not accept liability for lost, stolen or destroyed vouchers
- The NEC Group will not accept any vouchers that have been photocopied, damaged, altered or obtained illegally
- The NEC Group reserves the right to refuse or restrict the use of vouchers
- The NEC Group will not enter into correspondence regarding any aspect of this promotion
- The NEC Group reserves the right to amend, alter or withdraw the promotion at any time without prior notice
- Voucher valid until 30th November 2019

* Terms and conditions

- Not valid with any other offer
- Only valid at participating restaurants or cafés
- Subject to availability and restaurant opening times
- Excludes any Food Markets and in hall temporary catering units
- This voucher must be surrendered at the time of redemption
- The voucher cannot be exchanged for cash
- The value of this voucher equals 0.001p
- The NEC Group will not accept liability for lost, stolen or destroyed vouchers

- The NEC Group will not accept any vouchers that have been photocopied, damaged, altered or obtained illegally
- The NEC Group reserves the right to refuse or restrict the use of vouchers
- The NEC Group will not enter into correspondence regarding any aspect of this promotion
- The NEC Group reserves the right to amend, alter or withdraw the promotion at any time without prior notice
- Voucher valid until 30th November 2019

Getting around the NEC

Site Map



Key

- P1/P2 Piazza entrances
- A1/A2/A3 Atrium entrances
- Visitor & Business Centre - T: +44 (0)121 780 4141
- Welcome desk
- The NEC woodland
- Car parks: South: S1-S7, East: E1-E5, North: N1-N12, West: West car park
- Only in use when directed by NEC signs/traffic staff

- A VIP parking
- B Disabled parking
- C NEC visitor parking/ outdoor exhibition area
- D West Midlands bus stop
- E NEC Express 1
- F NEC Express 3
- G1 G2 G3 G4 G5 Gates

- Taxi rank
- Private hire taxi pick up / drop off
- Car park toilets (including accessible toilet)
- Airport
- Train
- Box office & Arena entrance
- Shuttle bus to halls
- Arena bus stop (to East Car Parks)
- Pedestrian routes
- Pedestrian routes subway



- Outlet Shopping
- Genting Hotel & Spa
- Bars and Restaurants
- Cinema
- Genting International Casino
- The Vox Conference Centre