



# LAUNCHPAD UK 2016 GUIDE



**dentistry  
show**

**LAUNCHPAD UK**

 @dentistry / @dentaltechshow

[thedentistryshow.co.uk](http://thedentistryshow.co.uk)

[the-dts.co.uk](http://the-dts.co.uk)

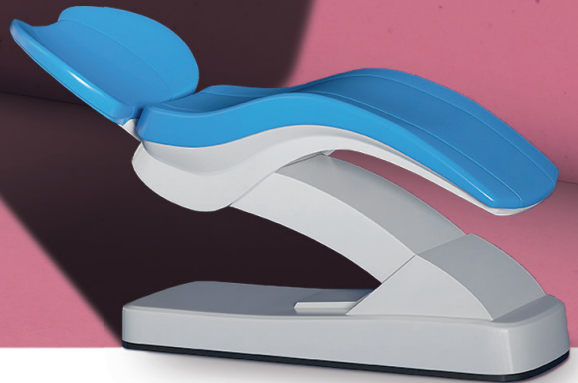


Delivering the latest innovations in Dentistry

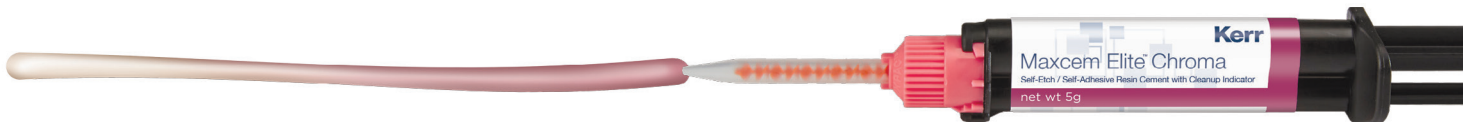
# THE WRONG CEMENT CAN COME BACK TO HAUNT YOU

Cement cleanup can be unpredictable. Environmental factors, timing inconsistencies, and instability can add up to outcomes that can leave problems lurking.

**Isn't it time to change your cement?**



**Maxcem Elite™ Chroma** dispenses pink and fades to a cement shade, allowing you to recognise the precise moment your excess cement is ready to be removed. Then, with just one peel, success. Your restoration is secure. **Change your cement. Change your outcomes.**



**Maxcem Elite™ Chroma**  
Self-Etch / Self-Adhesive Resin Cement with Cleanup Indicator



# Welcome to The Dentistry Show and The Dental Technology Showcase Launchpad UK Guide

Launchpad UK Guide is the perfect platform for the trade show to showcase and launch the very latest products, materials and technology available to the UK market.

For delegates attending the shows on **Friday 22nd and Saturday 23rd April 2016**, this means that you can be sure to source all the very latest developments and innovations, with an array of brand new, cutting edge technologies and services at your disposal. The experts will also be on hand across the extensive trade floor to provide any information or advice you may need and to help you ensure that your business is at the very forefront of dentistry.

In this guide you will find the latest products, materials and technology from:

3DISC	Pg 4
3D Lipo	Pg 4
Cookson Dental	Pg 4
Dental Flex Partial	Pg 4
Dentsply	Pg 5
Detax	Pg 5
Digital Dental	Pg 5 & 7
DryDent	Pg 7
Evident	Pg 7
Implantium	Pg 7
ISFY Ltd	Pg 7
Nobel Biocare	Pg 9

Omnicent UK	Pg 9
Oral Path	Pg 9
Qudent	Pg 9 & 11
Reitel Feinwerktechnik	Pg 11
Roland DG (UK) Ltd	Pg 11
Schottlander	Pg 11
SMG3D	Pg 11
Smile Imaging	Pg 13
Swish Dental Ltd	Pg 13
Tepe	Pg 15
WHW	Pg 15

Whether you are a delegate at The Dentistry Show or Dental Technology Showcase you'll find new products relevant to you and your business. The below icons will help you understand which companies have new launches for each show.



This product is new to The Dentistry Show



This product is new to Dental Technology Showcase

## For all of this and more, make sure you attend the shows taking place at the NEC, Birmingham - DON'T MISS OUT!

### TWO EASY WAYS TO SECURE YOUR FREE PASS:

1



#### TELEPHONE:

+44 (0)207 348 5776 or  
+44 (0)207 013 4986

2



#### ONLINE:

[www.thedentistryshow.co.uk/launchpad](http://www.thedentistryshow.co.uk/launchpad)

3DISC Imaging invites you to experience the high diagnostic value of their newest addition to their digital imaging product line: the FireCam HD, a high-definition intraoral camera. The image resolution of 5M pixels is the highest on the market and enables you to see every detail while examining your patients' teeth.



The touch-sensitive 360° action button allows you to capture an image no matter where you press, preventing inconvenient work positions. The FireCam HD automatically adjusts images with auto-focus and auto-brightness, giving you the best image possible.

Dentists can use the FireCam HD during consultations to highlight the patients' need for treatment by showing them a clear picture of oral issues and to register progress during on-going treatments.

Visit Booth B52, [www.3DISCimaging.com](http://www.3DISCimaging.com) or contact [info@3DISCimaging.com](mailto:info@3DISCimaging.com)

**Visit us on stand B52**

### 3D Lipo

#### New & Exclusive Product Launch for Dentistry Show 2016

3D- lipo Ltd are thrilled to announce the launch of their latest multi- technology device- the 3D- lipomed V2. Following the success of 3D- lipo + and 3D- lipomed, this new machine represents the latest combination of advanced technologies to successfully target specific body indications through the treatment of fat removal, skin tightening and cellulite.



The powerful cavitation will remain the choice of treatment for deeper fat removal and overall circumference reduction, boasting 200 watt output and a head size of 60cm<sup>2</sup>- incorporating brand new cyclone technology for 2016! This unique feature ensures that the energy is even more focused to deliver dramatic results. In addition, the existing popular tripolar 3rd generation Radio- frequency for face and body skin tightening will also be incorporated in the new platform.

Brand new for 2016 is HIFU- this treatment set to replace cryolipolysis as the new direction in targeted fat removal, due to its precise nature of delivery and speed. HIFU delivers a 24 line matrix of focussed energy at a depth of 1.3cm which is fantastic for stubborn pockets of fat and body sculpting.

Clinically proven shockwave therapy is another exciting addition to the 3D- lipomed V2. This has been introduced to combat cellulite- by stimulating the breakdown of fat cells, collagen synthesis and lymphatic drainage via the delivery of radial shockwaves. The result of this is cellulite reduction and improvement in skin elasticity.

The 3D- lipomed V2 truly represents the most up to date technologies on the market to deliver a tailored approach to clients' needs ensuring best possible patient outcomes. 3D- lipo Ltd will be launching this new device at the Dentistry Show with an exclusive show offer of up to 20 % off equipment packages purchased at the show.

For further information visit [www.3d-lipo.co.uk](http://www.3d-lipo.co.uk) or call 01788 550440 to arrange a demonstration.

**Visit us on stand L100**

**REGISTER FOR YOUR FREE PASS**  
[www.thedentistryshow.co.uk/launchpad](http://www.thedentistryshow.co.uk/launchpad)

Cookson expands their acrylic teeth range from Huge Dental.



The new MAIST series is a high quality tooth range with intricate layering and individual characterisation.

Featuring a natural appearance and offering high performance the double cross-lined material gives the most outstanding properties which include:

- 5 layer anteriors
- Permanence of shade
- High grinding resistance
- Tissue compatibility
- High Wear resistance
- Outstanding polishing ability
- High plaque resistance
- Strong bond to the denture base materials
- Wide range of moulds

12 upper anterior moulds: S1, S2, S3, S4, T1, T2, T3, T4, O1, O2, O3, O4.

6 lower anterior moulds: L1, L2, L3, L4, L5, L6.

6 posterior moulds: 3OUL, 32UL, 34UL.

Superb teeth aimed at the private market but very competitively priced.

**Visit us on stand 140**

### Dental Flex Partial

Dental Flex Partial is proud to introduce a brand new range of revolutionary Thermoplastic Materials and Injection System for Flexible Partial to the UK market.



For the first time ever, this product combines the density and resistance of a semi-rigid polyamide, high ease of finishing and polishing and an incredibly high flexural strength, not surprisingly, the highest available on the market ASTM D790: 120. This is VIVA FLEX PARTIALS®.

The new lineup includes two polyamides (medium and low flexibility) and a thermoplastic based acrylic, used for complete dentures.

As well as new thermoplastic, Dental Flex Partial will reveal for the first time the new Injection System MADE IN ITALY, the first of its kind with an incredible number of innovations, that will save you time and money.

We are here to help you develop the best flexible partials in the world.

Special offers during the exhibition for DLA members.

**Visit us on stand 424**





### Uniquely formulated varnish for relief of hypersensitivity

NUPRO® White Varnish from Dentsply Sirona promotes rapid fluoride release giving fast and effective relief from hypersensitivity.

Designed to minimise clumping, with no dripping or stringing, NUPRO White Varnish eliminates some of the frustrations dental professionals experience when using fluoride varnish. Flexible packaging allows the user to choose how to hold the unit dose for their convenience. Easy to handle and apply, dentists and hygienists will save time and effort as it can be applied without needing to dry the teeth first.

Developed with patients in mind, NUPRO White Varnish enables a shorter wear time compared to other leading varnish brands; patients can eat and drink after only two hours. It is also available in two pleasant flavours.

To find out more about NUPRO 5% White Varnish contact Dentsply Sirona on 0800 072 3313 or visit [dentsply.com/en-uk](http://dentsply.com/en-uk)

Earn from DENTSPLY Rewards £s on all your Preventive solution purchases at [dentsplyrewards.co.uk](http://dentsplyrewards.co.uk) and access FREE CPD webinars and product demonstrations at [dentsplyacademy.co.uk](http://dentsplyacademy.co.uk)

Facebook: DENTSPLY UK

Twitter: DENTSPLY\_UK

**Visit us on stand A10**



### Dentsply

#### The all-new Cavitron Touch™

The all-new Cavitron Touch™ Ultrasonic Scaling System from Dentsply Sirona is designed for an improved scaling experience. It is the first ever touch-screen magnetostrictive ultrasonic scaler with a new fully rotating Steri-Mate 360° detachable, autoclavable handpiece.

Cavitron Touch has an easy-to-clean touchscreen interface and customisable power settings, providing improved efficiency and ease of use for multiple clinicians.

Using innovative Tap-On™ Technology, the Cavitron Touch incorporates a wireless, rechargeable foot pedal that is designed to help reduce leg and ankle discomfort.

Naturally, the Cavitron Touch is designed to handle all levels of deposit using the full range of the 30kHz Cavitron family of inserts.

To find out more about the role of ultrasonic scalers in practice and the wide range of inserts available contact Dentsply Sirona on 0800 072 3313 or visit [dentsply.com/en-uk](http://dentsply.com/en-uk).

Earn DENTSPLY Rewards £s on all your Preventive solution purchases at [dentsplyrewards.co.uk](http://dentsplyrewards.co.uk) and access free CPD webinars at [dentsplyacademy.co.uk](http://dentsplyacademy.co.uk)

Facebook: DENTSPLY UK

Twitter: DENTSPLY\_UK

**Visit us on stand A10**



**NEW Freeprint®: Premium 3D materials for all open DLP printers/ WL 405 nm or UV 378-388 nm**

# DETAX

**Freeprint® model sand 405 or UV, Freeprint® model ivory 405 or UV, Freeprint® model grey 405 or UV**

Generative fabrication of dental models. Precise reproduction of details, maximum surface hardness and shape stability. Precision in construction, feel and stability to meet the high demands of model production.

#### Freeprint® cast 405 or UV

Generative fabrication of cast objects. Burns without residue in the mould. Embedding is performed with phosphate-bonded standard embedding compound. Precise reproduction of the finest surface structures. Low-viscosity approach for low material consumption. High speed and precision in construction.

#### Freeprint® splint 405 or UV

Generative fabrication of biocompatible drilling templates and occlusal splints. Clear-transparent formulation for visual control in the working area. High initial hardness and final strength for maximum process reliability. Low-viscosity approach for low material consumption. High mechanical bending and breaking strength, without being brittle.

**Visit us on stand 240**

### Digital Dental

#### Hand Held X ray

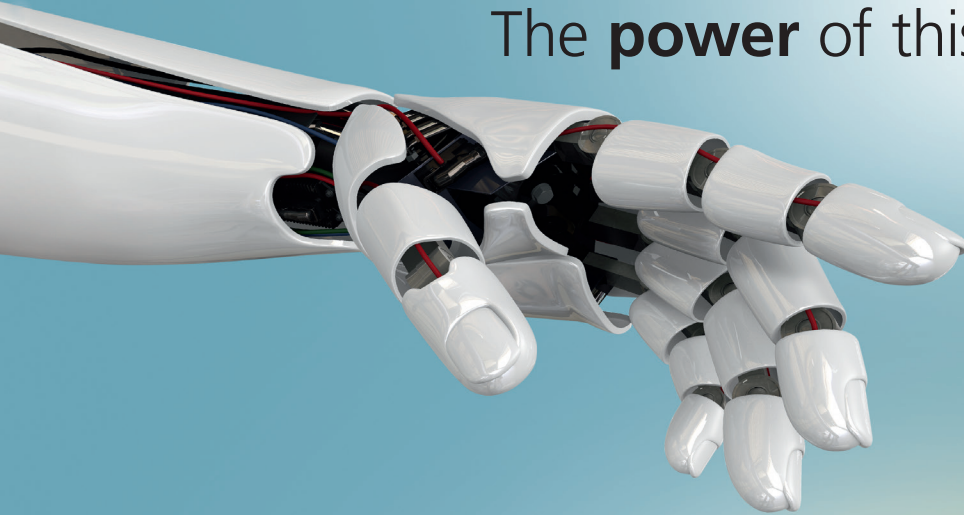
The Rextar X portable x ray is the ideal solution for your intra oral x rays. Lightweight and very easy to use. One charge lasts all week so it is perfect to share between rooms, eliminating need for multiple wall mount units. Brilliant for general practice, surgical, home visits and specialists. The double shielding lets you stay with your patients when taking x rays. This makes it ideal for children, nervous and special needs patients. The lightweight camera type design and high focussed 70Kv generator enables anybody to take razor sharp images. The Rextar can be programmed for use with film, phosphor image plates or sensors. Supplied fully tested for immediate use.

[www.digitaldental.co.uk](http://www.digitaldental.co.uk)

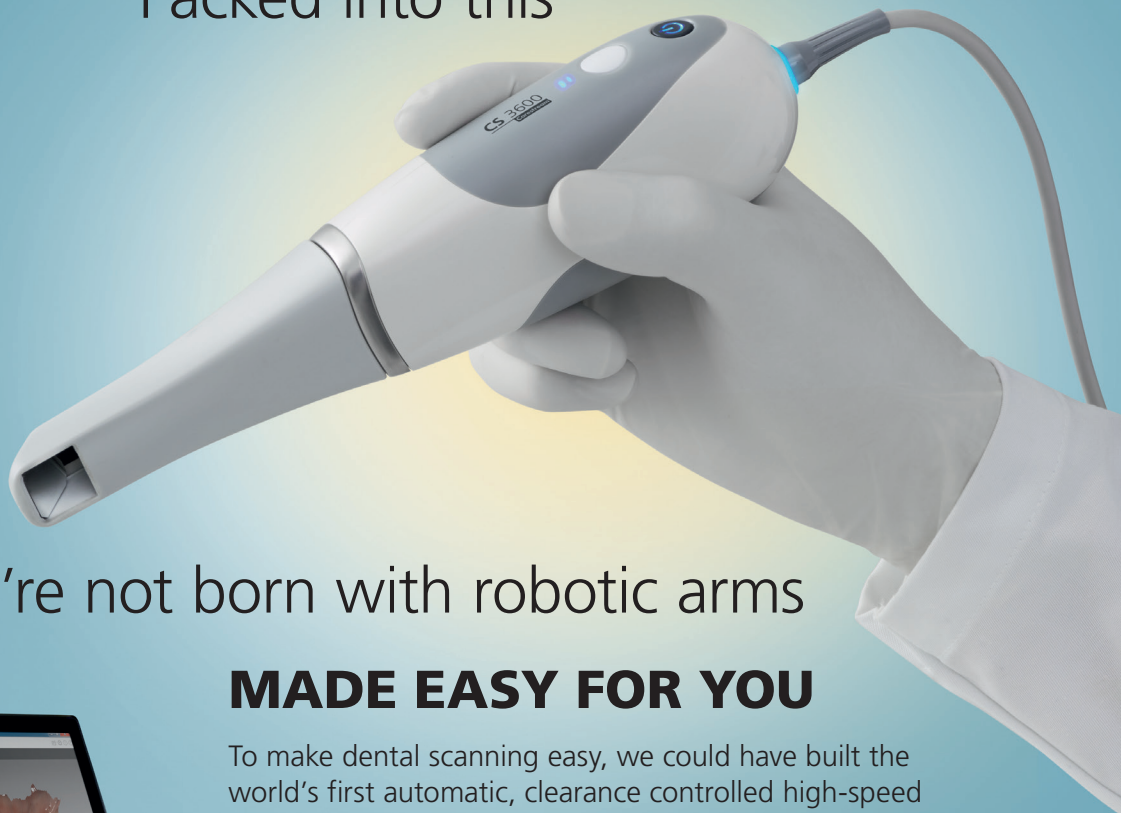
**Visit us on stand L92**



The **power** of this



Packed into this



Because we're not born with robotic arms

## **MADE EASY FOR YOU**

To make dental scanning easy, we could have built the world's first automatic, clearance controlled high-speed bionic appendage. Instead we packed it all into our new CS 3600 to make acquiring digital impressions easier for you.

**VISIT US AT THE DENTISTRY SHOW ON STAND H40**



To explore more  
in the UK call **0800 169 9692**  
or in the Republic of Ireland call **+44 1438 245 000**  
email [sales.uk.csd@carestream.com](mailto:sales.uk.csd@carestream.com)  
or visit [www.carestreamdental.co.uk](http://www.carestreamdental.co.uk)

## Digital Dental

DS

### XST X ray service and testing.

Many practices get confused between the '3 yearly x ray test' and what is actually required. X ray machines should be serviced annually. X ray tests are every 3 year for intra and pan oral units. Annually for Cone Beam CT and hand held x ray units. A new comprehensive solution for the service and testing of all of your dental x ray and digital imaging equipment. No test packs or forms to complete. No membership needed or on line surveys to fill in. Our specialist technicians have the latest radiation testing and calibration equipment. Instant results and all the paperwork completed for you. Training for new staff and advice on preventative maintenance so your equipment works better. Servicing, alignment and calibration ensures you are getting the best images possible. One company carrying out all of the tasks on one visit also means it costs less.

[http://www.digitaldental.co.uk/X\\_ray\\_testing.html](http://www.digitaldental.co.uk/X_ray_testing.html)

**Visit us on stand L92**



## DryDent

DS

### COMPLETELY DRY ENVIRONMENT FOR A VARIETY OF DIFFERENT PROCEDURES

Super Absorbents have reached a new level with the introduction of the **NEW & UNIQUE DryDent®** Sublingual for optimal saliva control.

A unique, new product which collects and controls the saliva produced by the sublingual glands as well as the submandibular glands.

It is placed under the tongue for the optimal collection of unwanted moisture under the sublingual area. Its super absorbent qualities provide a super dry oral environment during a variety of procedures.

Patient comfort has been improved with its smooth soft material design that reduces uncomfortable swallowing reflexes. Saliva ejectors can be placed over the DryDent Sublingual, minimizing uncomfortable suction of soft tissue. DryDent Sublingual's super absorbent capacity keeps moisture control even when it is fully saturated.

**Visit us on stand E20**

## Evident

DS

**EZ DAM:** The superior dry field isolation system. This all-in-one product consists of autoclavable bite blocks in 5 sizes, including trimmable mouthpieces that supply cheek and tongue retraction in addition to a throat pack. Each mouthpiece has built-in vacuum channels that allow continuous and complete removal of fluids from the oral cavity. This provides an optimal workspace and constant dry field not to mention a relaxed patient.



EZ DAM outperforms other isolation systems because of its innovative hands-free suction method and ease of use. Being less invasive and intimidating by construction, its application and removal is straightforward. Even patients with a sensitive gag reflex report that EZ DAM feels comfortable!

Using EZ DAM may reduce procedure time by up to 30% as you are able to work uninterrupted from the usual demands and failings of traditional dry field methods. This represents significant time and cost savings including less stress.

**Visit us on stand K58**

## Implantium

DS

The Densah® Burs by Versah® are launching in the UK.

Come and visit us at stand B78 to find out how these burs can improve your osteotomy preparations.

Densah® Bur Versatility, the innovation that allows you to gently autograph the maxillary sinus and eliminate the guessing game of Implant primary stability. Densify or cut with the push of a button and efficiently expand any ridge in either jaw. Versah LLC was founded in 2014 by Dr Salah Huwais a practicing periodontist in Michigan. Dr Huwais created Versah in order to provide implant dentists with an improved and unique way to prepare osteotomies. Contrary to drilling away bone, the densah Burs are rotated in reverse at 800-1500rpms and when coupled with irrigation, hydro dynamically densify bone through compaction autografting or Osseodensification. The result is a consistently cylindrical and densified osteotomy, improving primary stability.



The Universal kit is suitable for ALL implant systems.

See the burs in action during the lecture by Jason Buglass BDS – Simple, Accurate, Keyhole Implant Surgery has Landed” in the ADI Lecture Theatre Saturday 13.15-14.15.

Can't wait until the show? Check out our website [www.versah.co.uk](http://www.versah.co.uk).

**Visit us on stand B78**

## ISFY Ltd

DS

ISFY Ltd manufactures a full range of unique and differentiated dental instruments of exceptional quality and value.

Our premium **Anaqa** range includes orthodontic pliers, extraction forceps and elevators, made with the finest quality medical grade steel with optional titanium coating. Our diamond honed carbide tips (by Serration Ltd UK) gives performance with precision.



**Anaqa** instruments come with an industry leading five year guarantee.

Free product promotions will be available on the stand together with a very special giveaway - don't forget to collect yours.

For THE DENTISTRY SHOW we will also be launching a new range of Anaqa dental instruments to complement our existing range, these products are designed to take dental instrumentation to a whole new dimension.

The ISFY team look forward to welcoming everyone.

To find out more about ISFY, please visit [www.isfy.co.uk](http://www.isfy.co.uk)

**Visit us on stand K24**

**22nd and 23rd April 2016,  
NEC Birmingham, UK  
[www.thedentistryshow.co.uk](http://www.thedentistryshow.co.uk)  
and [www.the-dts.co.uk](http://www.the-dts.co.uk)**



# Digital Dentistry... *it's here now!*



## Discover, Learn and Connect

with Planmeca at this year's Dentistry Show and learn about the current digital dentistry innovations that can boost practice productivity and improve patient care. The Nordic Institute of Dental Education will be presenting a series of lectures focusing on current digital dental innovations that provide better dentistry through technology for all dental professionals and patients.

DISCOVER  
integrated,  
high-tech  
innovation

LEARN  
skills  
from the  
experts

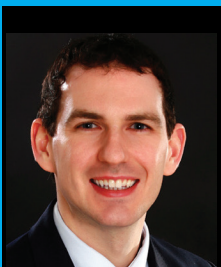
CONNECT  
with truly  
digital  
solutions

### The Power of Chairside Digital Dentistry

Dr. Rupert Austin and Petri Kajander deliver a programme of short lectures and hands-on demonstrations about the clinical advantages that chairside digital restorative dentistry has to offer. Learn about the workflow for same-day dentistry through to the utilisation of scanning the oral environment achieving chairside restorations with incredible results!

#### Course objectives

- Understand the options available for digital restorative dentistry
- Experience hands-on with the power of digital scanning with highly advanced digital restorations including same-day crowns, inlays, onlays, bridges and veneers. And see how easy it is to scan, design and mill your own same-day restoration
- Learn about the technology platforms and the choices available within your practice or laboratory



Dr Rupert Austin



Petri Kajander

Date: Friday 22nd & Saturday 23rd April  
Time: 10:00-11:00, 12:00-13:00 & 14:00-15:00  
Target audience: All Dentists and DCP's  
CPD: Yes. SPACES LIMITED TO 12 PER SESSION

### 3D CBCT Technology within General Practice

Join senior NIDE lecturer Mark Niemi as he talks about the integration of 3D technology within general practice. Learn how 3D (CBCT) technology will impact your practice and your patients everyday. From implant planning through to diagnosing the unseen and preventing further complications, 3D imaging has a place and need in every dental practice.

#### Course objectives

- Understand the principles of 3D and how to interpret CBCT images
- Discover the advantages and capabilities of 3D technology integration to ensure the best choices for you and your patients
- During the hands-on session you will design your first virtual patient implant, utilising the powerful Romexis® software
- Understand how 3D technology can be combined with other imaging solutions for a complete comprehensive patient care programme



Mark Niemi

Date: Friday 22nd & Saturday 23rd April  
Time: 11:00-12:00, 13:00-14:00 & 15:00-16:00  
Target audience: All Dentists and DCP's  
CPD: Yes. SPACES LIMITED TO 12 PER SESSION

To learn more about the courses that NIDE offer please visit  
[www.nordicdented.com](http://www.nordicdented.com)

Join the digital revolution and learn from the experts with Planmeca  
Register now to secure your place at [www.thedentistryshow.co.uk/nide](http://www.thedentistryshow.co.uk/nide)





### A Leading Evidence-Based Product Supplier

Designed to deliver outstanding results when used together, all cutting-edge implant products from Nobel Biocare are supported by extensive clinical research and development.

Being launched at DTS is the exciting NobelDesign® – highly efficient and intuitive CAD software for NobelProcera® restorations.

Its advanced yet simple-to-use tools facilitate the efficient manufacture of highly accurate restorations, while ensuring multiple cases are easy to manage. The tooth setup and mirroring features will save you time, while the virtual articulator function will help optimise occlusal contact points for superior prosthetics.

What's more, NobelDesign® incorporates innovative technology that visualises designs in photo-realistic rendering, giving you a clear indication of how tooth shape and fissure design will appear in the patient's mouth.

Particularly valuable when used in combination with the high-precision NobelProcera® 2G scanner, you'll soon see the benefits of the powerful CAD software that is NobelDesign®!

Contact Nobel Biocare on 0208 756 3300, or visit [www.nobelbiocare.com](http://www.nobelbiocare.com)

**Visit us on stand 530**

### Omnicent UK

Omnicent UK is your one-stop shop for all of your compatible dental implant prosthetics.

At Omnicent UK we are proud to supply the most comprehensive range of compatible dental implant prosthetics manufactured to the highest standards by IPD2004.

Omnicent UK believes strongly in excellent customer service and support to all of its clients. We provide high quality restorative solutions that are compatible with the most popular dental implant manufacturers found within the UK and Ireland.

Through an easy to use online store, all of our products are delivered directly to you by next day delivery.

Come and visit us at DTS or online at [www.omnicent.uk](http://www.omnicent.uk)

**Visit us on stand 246**



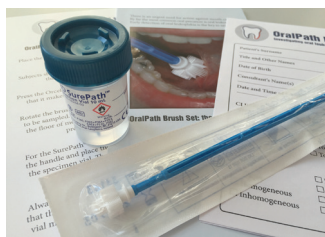
Omnicent UK

### Oral Path

The OralPath Brush Set is used by dental professionals to investigate oral leukoplakia. It is an efficient and cost-effective tool for first-stage diagnosis of oral leukoplakic lesions. Time matters, and the OralPath Brush Set can be used at the moment the lesion is detected – no need to wait for another appointment or referral. The OralPath Brush Set is easy to use, non-invasive and well accepted by patients. The cell samples gained are processed in the lab using liquid-based cytology. It has been shown that the oral brush can obtain intra-epithelial samples composed of cells that are representative of all layers of the oral epithelium. Dr Harald Ebhardt, the Director of OralPath Ltd gives a lecture entitled "Investigating oral leukoplakia - which way to go?" at the CORE CPD Theatre on 23rd April 2016.

For further informations visit our website [www.oralpath.co.uk](http://www.oralpath.co.uk).

**Visit us on stand P90**



### Qudent

The Traus SIP10 implant system with LED is an advanced motor system with high performance.

It uses a motor, with accurately controlled speed and torque functions giving live speed and torque display and comes complete with a 20:1 LED contra angle hand piece.



- 8 gear ratios: 1:5, 1:4, 1:1, 16:1, 20:1, 27:1, 32:1, 64:1
- BLDC motor 0-40,000 rpm
- Complete with 20:1 LED handpiece
- External and internal irrigation
- Powerful 55N/cm² DC motor
- 9 programs memory function
- Automatic overload protection function
- Indication of actual RPM and torque on operating for proper working condition
- Motor auto-calibration function
- Ergonomic multi-functional foot controller
- Supplied and services in the UK by Qudent

For further details call us on 01903 211737 or email [sales@qudent.co.uk](mailto:sales@qudent.co.uk)

**Visit us on stand K95**

## NEW: The Dentistry Show 2016 App

**This is the official interactive app for The Dentistry Show and Dental Technology Showcase where you will be able to:**

- View schedules, explore sessions and find networking events.
- Create your own personal schedule for easy conference attendance.
- Access location and speaker information at your fingertips.
- Expand your professional network.
- Interact with a real-time feed of all event activity, photos and popular discussion topics.
- Find exhibitors and partners.
- Get real time updates.



**Visit [www.thedentistryshow.co.uk](http://www.thedentistryshow.co.uk) for more information!**



**Get the free app:**



improving dentistry together



Visit us on Stand DTS15

For further details on any Schottlander products  
please call us on **freephone 0800 97 000 79**  
or visit **[www.schottlander.com](http://www.schottlander.com)**

Woodpecker are a world leading expert in bone cutting efficiency. The Ultrasurgery LED is easy to operate in all functions and comes with a comprehensive range of hand pieces, tips and accessories.

- Equipped with 2 handpieces and 14 tips: Basic Kit (US1, US2, US3, US4, US5) Sinus Lift Kit (UL1, UL2, UL4, UL5) Osteotomy Kit (US1, US2, US1L, US1R) and Implant Prep Kit (UI2, UI3, UL2)
- Easy operation: BONE FUNCTION, ROOT FUNCTION, CLEAN FUNCTION
- Mainly used in oral surgery, plastic surgery, orthopaedics, division of osteotomy, osteoplasty surgery and bone collection
- LED handpiece insure better vision
- The monitor and alarm function of working process ensures the safety of the machine and surgery
- Supplied and serviced in the UK by Qudent



For further details call us on 01903 211737 or email [sales@qudent.co.uk](mailto:sales@qudent.co.uk)

**Visit us on stand K95**

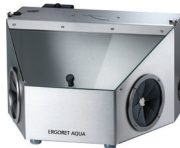
## Reitel Feinwerktechnik

The compact ERGORET AQUA is designed for trimming and cutting under wet conditions, where protection for health and clothes is requirement; it is especially useful when processing zirconium.

If needed, optional water cleaning, activated by the foot control, is also available. The transparent glass cover is scratch-resistant and durable. Waterproof LED lighting offers a perfect sight on the objects.

The ergonomically designed unit is also fitted with arm seals for improved user comfort. Features

- bright LED work area lighting
- stainless steel housing with large glass cover
- rubber hand-throughput
- handpiece adapter
- optional water cleaning activated by foot control with fittings to connect to the water supply



**Visit us on stand 345**

## Roland DG (UK) Ltd

**Products: DWX-51D dry dental mill and DWX-4W wet detail mill**

Designed for the effortless production of dental prosthetics, Roland Easyshape dental mills deliver quality, efficiency and value in a compact, user-friendly device. Ideal for labs or office environments, the open architecture of the DWX series allows you to work with the latest materials, CAD/CAM software and scanners, without the need to rely on a single source.



Whether you're looking for a dedicated dry or wet milling solution, or to utilize both, Roland DG provides your ideal solution. Run the DWX-51D and DWX-4W side-by-side for the most flexible and productive dry and wet milling solution, giving you the confidence to take on the maximum amount of glass ceramics and zirconia restorations without the need for back-and-forth set-up and cleaning of a single machine.

Launched in 2015, the dual DWX solution will be on display on the Roland Easyshape stand, number 322, demonstrating partial framework applications, implant bars and anatomical implant bridges.

**Visit us on stand 322**

Schottlander was founded in 1922 and have prospered and are growing through an absolute commitment to the highest quality products, training and services that answer genuine clinical needs. We have twice received the Queens' Award for Enterprise in the Innovation Category.

At the Dentistry Show we will be showcasing and demonstrating our newest and most innovative products, including:

- the **XP-Endo Finisher** and **TotalFill BC Sealer** for the first time enable **3-Dimensional Endodontics** - regardless of which file system is used.
- **Doric Definition** is a new Addition Cured Silicone Impression Material range whose improved physical properties will give you more accurate crown and bridge impressions with better defined margins.
- **enigmallife+** denture teeth are a new range which look and feel like your patients' own teeth, helping them to regain their appearance and function.

For further details on any Schottlander products please call us on **freephone 0800 97 000 79** or visit [www.schottlander.com](http://www.schottlander.com)

**Visit us on stand 15 & A15**

## SMG 3D

Thermadent Ltd., an orthodontic dental laboratory company, recently purchased an Objet30 OrthoDesk 3D printer to help digitise its workflow. The printer was installed by SMG3D – the 3D print division of the Stanford Marsh Group.

Matthew Garnett, owner and Managing Director of Thermadent, explains "It helps us digitise our workflow from digital to model, accelerate our production times and increase production capacity cleanly and efficiently."

"Going digital is surely the only route for affordable dental technology, and I would say it's a must for all forward-thinking dental practitioners."

Matthew also explains "The team at SMG3D helped me decide which 3D printer was best for my needs thanks to their informed and impartial advice. They provided a first-class service all round."

SMG3D's knowledge and experience of 3D Print is extensive as it supplied 3D print technology into engineering environments for rapid prototyping and digital manufacturing applications for several years.

**Visit us on stand 647**





It is not a trick. It is  
legendary science.  
Discover the magic of  
the tapered standard.

Visit us at  
Dental Technology  
Showcase &  
The Dentistry Show  
**Stand 310**



Designed for excellent primary stability thanks to an apically tapered implant with groundbreaking material and surface technology for maximizing predictability.

The Bone Level Tapered Implant – the new tapered standard.  
Engineered in Switzerland, home of Straumann.

For more information please call +44 (0) 1293 651230 or visit  
<http://blt.straumann.com>

Material

Roxolid®



Surface

SLActive®



Straumann



@Straumann\_UK



## Smile Imaging

DS

Cosmetic digital imaging has never been more high-tech, efficient and precise. This is our fastest and easiest to use software. Our latest update has an automatic analysing whitening feature. The software outlines the area and shows the motivational picture in less than 30 seconds, "Wowing" patients.



Results are compelling, instantly motivating, leading to a guaranteed increase in case acceptance, and profitability. Presenting cosmetic dentistry cases in a new and exciting way that a patient understands. Setting expectations is no longer an issue, as you have complete control with all our procedures.

Adding our software to your services will allow your patients to see, before treatment, the end of an emotional dental journey of how their smile could look. This proven technology produces a faster "YES" to all your clinical procedures.

Call into our stand for a FREE 42" TV or Camera & Printer Special Order Show Deal.

**Visit us on stand L103**

## Swish Dental Ltd

DS

### The World's Most Advanced Wireless Intraoral Camera

#### Wireless Autofocus High Definition IO Camera with Mouse

Whicam Story3 CS wireless is the ideal communication tool for any dental professional. Delivering precise, true-to-life images with each shot, the Whicam Story3 CS wireless camera provides the visual evidence you need to educate patients and make more accurate diagnoses.



The Whicam Story3 CS Wireless IntraOral camera will integrate with most imaging software and practice management software. E.g. Software of Excellence.

Don't have imaging software? Enjoy free high tech user friendly image viewing software, DRS Viewer 2. We will have other new products to view on our stand P122 including light cures, apex locators and other intra oral cameras. We look forward to your visit.

Swish Dental Ltd, 14 Gloucester St, St Helier, Jersey JE2 3QR

[www.swishdental.com](http://www.swishdental.com)

**Visit us on stand P122**

**22nd and 23rd April 2016, NEC Birmingham, UK**  
**[www.thedentistryshow.co.uk](http://www.thedentistryshow.co.uk) and [www.the-dts.co.uk](http://www.the-dts.co.uk)**



**Visit us at  
booth no. 40 with  
Metrodent**



## Varseo – simply flexible printing

- **Variability** – extensive and expandable range of materials and restorations
- **Speed** – high building speed irrespective of the number of elements to be produced
- **Efficiency** – thanks to the unique cartridge system: material changeover in seconds, low material consumption, minimal material ageing
- **Openness** – "open STL file" device for all dental software solutions

[www.bego.com/3d-printing](http://www.bego.com/3d-printing)

Available from:



# Education modules suited to your lifestyle

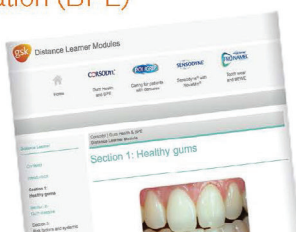
Developed to suit you and the whole dental team.  
The range of distance learner modules can each **contribute up to 1.5 hours towards your verifiable CPD.**

Can contribute up to 1.5 hours towards your verifiable CPD

## Corsodyl®

Gum Health & Basic Periodontal Examination (BPE)

**CORSODYL®**



## Pronamel®

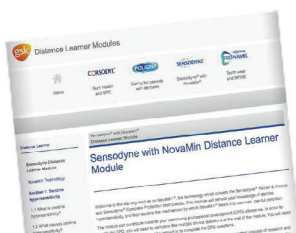
Basic Erosive Wear Examination (BEWE) and Product MOA

**SENSODYNE®  
PRONAMEL®**



## Sensodyne® with NovaMin®

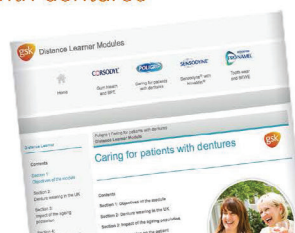
**SENSODYNE®**



## Poligrip®

Caring for patients with dentures

**POLIGRIP®**



**SENSODYNE®  
PRONAMEL® SENSODYNE®**

**CORSODYL® POLIGRIP®**

All modules are **available 24 hours a day 7 days a week**, allowing flexibility.

To complete any of the distance learner modules today, visit  
**[www.gskdentalprofessionals.co.uk/educationDS2](http://www.gskdentalprofessionals.co.uk/educationDS2)**

TePe is a Swedish company, which have been manufacturing high quality oral hygiene products since 1965. Our well-known TePe Interdental brushes, together with toothbrushes, specialist brushes including our implant care range, are used daily by consumers and dental professionals worldwide.



Showcasing our new TePe EasyPick™ Orange, this is an extension to our TePe EasyPick range and available in two tapered sizes. The TePe EasyPick comes in a pack of 36 and contains a free travel case, which again supports the on-the-go – anytime, anywhere recommendation and with 36 in the pack it also has the bonus of being an economical habit to adopt

A simple Interdental cleaning option, TePe EasyPick makes interdental cleaning simple, as it is an easy to use interdental pick for on-the-go use, endorsing the interdental cleaning habit, an essential preventive measure in the fight against gum disease.

Visit our stand for a free sample!

[www.tepe.co.uk](http://www.tepe.co.uk), Email: [info@tepe.co.uk](mailto:info@tepe.co.uk)

**Visit us on stand N100**

### New Centri Aftercare Kits From WHW

We are delighted to announce the launch of our new Centri Aftercare kits at the Dentistry Show 2016. These amazing kits come prepacked in our bespoke toiletry bag and offer everything the patient needs to get started with their new acrylic or flexible denture.



The Centri 5 (acrylic denture) or Centri 8 (flexible denture) kits offer a tailored solution to ensure the patient keeps their new appliance in pristine condition.

The kits contain our ever popular NitrAdine tablets, one of the leading disinfectants in the UK. This microporous disinfectant only needs to be used twice a week as it creates a bio-film (a 3 dimensional protective matrix) to protect the denture from not just surface bacteria but also Candida Albicans that penetrate deep into the pores and cracks. NitrAdine can also be used on orthodontic appliances, chromes, mouthguards and anti-bruxism devices as it contains no bleach.

**Visit us on stand 50 & A50**

### TWO EASY WAYS TO SECURE YOUR FREE PASS:

TEL: +44 (0)207 348 5776 or +44 (0)207 013 4986 • ONLINE: [www.thedentistryshow.co.uk/launchpad](http://www.thedentistryshow.co.uk/launchpad)

# DTS 2016 FRIDAY NIGHT SOCIAL

In partnership with



Promoting British Dental Technology

## DELEGATES & EXHIBITORS WELCOME

**JOIN US FOR A FUN-FILLED EVENING ON FRIDAY 22ND APRIL, 5.30PM-9.30PM AT WETHERSPOONS (ON-SITE AT THE NEC).**

The pub is conveniently located on-site at NEC.

After a busy first day at The Dental Technology Showcase, bring the team, clients and friends along to enjoy a buffet dinner, plenty of drinks and a friendly atmosphere.

**£20 PER TICKET (INC VAT) OR £90 FOR 5 TICKETS**

- Hot buffet meal
- Complimentary drinks



**TICKETS ARE LIMITED SO BOOK YOURS TODAY!**

**Call Mike Hulse on 02476 719688 or email: [dts-pubtickets@closerstillmedia.com](mailto:dts-pubtickets@closerstillmedia.com) to book your tickets now!**



**3M** Science.  
Applied to Life.™

**New**

# 3M™ Ketac™ Universal Aplicap™ Glass Ionomer Restorative

Paediatric, elderly and busy teens in between – treating patients who can't sit still long feels like a race against the clock – every second counts. That's why 3M developed Ketac Universal Aplicap glass ionomer restorative.

- ▶ **One-step placement**<sup>1</sup> – no conditioning, coating or light-curing steps to slow the procedure down
- ▶ **Low stickiness**<sup>2</sup> for easy placement
- ▶ **Stress-bearing properties**<sup>3</sup> enable extended indications
- ▶ **Continuous fluoride release**<sup>4</sup> over 12 months

Ketac Universal restorative... because caries prone patients can also be the most restless in the dental chair.

For more information,  
visit stand H20



<sup>1</sup> 3M Oral Care Internal Data. One-step placement. Claim number 06229, 2015

<sup>2</sup> 3M Oral Care Internal Data. Low stickiness 06246, 2015

<sup>3</sup> 3M Oral Care Internal Data. Extended Indications.  
Claim number 06183, 2015

<sup>4</sup> 3M Oral Care Internal Data. Fluoride release.  
Claim number 06117, 2015



**Finish faster.  
Finish strong.**