

THERE'S MORE TO THIS...





...THAN MEETS THE EYE


LAUNCHPAD UK 2017 GUIDE

12TH & 13TH MAY 2017



 TheDentistryShow

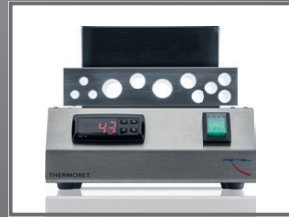
 @dentistryshow #DS17

 dentaltechshow

 @dentaltechshow #DTS17



■ DENTAL SURGERY EQUIPMENT



Welcome to The Dentistry Show and The Dental Technology Showcase Launchpad UK Guide

Launchpad UK Guide is the perfect platform for the trade show to showcase and launch the very latest products, materials and technology available to the UK market.

For delegates attending the shows on **Friday 12th and Saturday 13th May 2017**, this means that you can be sure to source all the very latest developments and innovations, with an array of brand new, cutting edge technologies and services at your disposal. The experts will also be on hand across the extensive trade floor to provide any information or advice you may need and to help you ensure that your business is at the very forefront of dentistry. Take a look at some of the companies below that are launching new products at this years show:

surgeryXpress®
Carefully delivered

PLANMECA

REITEL



Smile TRU

cds+
careanddentalservices

JAMA

I-PREVENT™
Waterproof Keyboards And Mice

DWS

schoTtlander
improving dentistry together



CALCiviS
dental enlightenment

workinstyle
.com

3M

Science.
Applied to Life.™



KULZER
MITSUBI CHEMICALS GROUP

ISFY
Ideas in Innovation



Wrights
THE DENTAL
SUPPLY CO.

CliniTech Medical™
Infection Prevention at our core

Alexandra



Best Dentist™

3shape

SmileOrtho

PHILIPS

Dentsply Sirona

2 EASY WAYS TO SECURE YOUR FREE PASS:

1

TELEPHONE:

+44 (0)207 0134 992

2

ONLINE:

www.thedentistryshow.co.uk/launchpad



In this guide you will find the latest products, materials and technology from the following companies:

Company name	Page
3M™	5
3Shape	5
Boutique Whitening	5
Alexandra	7
Best Dentist	7
BlueRecru	7
Caradoc Dental Services	7
Cfast	8
Chiral Systems	8
CliniTech Medical	9
Dentsply Sirona	11
DFAB®	11
Gama	12
GSK	12
iPREVENT®	14
ISFY International Ltd	14
KaVo	14
Kulzer	14
Narval	15

Company name	Page
Philips	15
Planmeca	15 & 16
Schottlander	16 & 18
SciCan	18
Smile Ortho	18
Stoddard	18
Surgery Express	20
SurgiSol	20
Work In Style	20
Wright's Connections	20



Whether you are a delegate at The Dentistry Show or Dental Technology Showcase you'll find new products relevant to you and your business. The below icons will help you understand which companies have new launches for each show.



This product is new to The Dentistry Show



This product is new to Dental Technology Showcase



3M™ Filtek™ One Bulk Fill Restorative

Filtek™ One's unique optical properties and improved opacity give you the simplicity of one-step placement—up to 5mm—without compromising aesthetic results.² Thanks to 3M's unique Smart Contrast Ratio Management technology, Filtek™ One bulk fill restorative features increased opacity without reducing depth of cure⁷. In its cured state, Filtek™ One has a higher opacity than other bulk fill offerings, even matching some universal composites. Available in five shades, there is no need for layering or expensive dispensing devices.



- Fast and easy one-step placement
- Increased opacity for improved aesthetics¹
- Stress relief to enable up to 5mm depth of cure²
- Excellent adaptation³
- No need for layering or expensive dispensing devices
- Excellent handling and sculptability⁴
- 3M's true nanotechnology provides superior wear resistance and excellent polish retention⁵
- High radiopacity⁶
- Unique tip design for easier access to deep cavities
- Available in 5 shades

Visit us on stand G42

1. 3M Oral Care Internal Data. Increased opacity for improved aesthetics. Claim 6810, 2016
2. 3M Oral Care Internal Data. 5mm depth of cure. Claim 6822, 2016
3. 3M Oral Care Internal Data. Easy adaption to cavity and margins. Claim 6763, 2016
4. 3M Oral Care Internal Data. Excellent adaption and ability to sculpt. Claim 6778, 2016
5. 3M Oral Care Internal Data. Nanotechnology; durability, polishability and polish retention. Claim 6809, 2016
6. 3M Oral Care Internal Data. High radiopacity. Claim 6871, 2016
7. 3M Oral Care Internal Data. Increased opacity for improved aesthetics. Claim 6810, 2016

Boutique Whitening

What is B1-4-Six?

Some companies simply offer a B1 Guarantee. At Boutique Whitening, we continually strive to give more value to our customers, so for us, simply getting your patients to B1 isn't enough. We will guarantee B1-4-Six. SHADE B1 FOR 6 MONTHS...GUARANTEED!



We are the only whitening system in the world to offer a B1 Guarantee with a 6 month guarantee! The B1-4-Six package includes TEN syringes, more than enough for initial treatment and periodic top-ups for 6 months.

Our amazing prices are as follows:

4 x 3ml standard kit: £22.50 plus vat (£27 inc vat)

4 x 3 ml standard kit with 2 lab made trays: £55 inclusive

10 x 3 ml B1-4-Six kit with 2 lab made trays: £89.99 inclusive

Prices include delivery to and from the laboratory!

Please call our sales team on 0113 873 0007 or email orders@boutiquewhitening.com

Visit us on stand L65

3Shape E Scanners make CAD/CAM more affordable

The affordably priced E scanners enable your lab to save time and cost-effectively deliver the highest quality and widest range of prosthetics to your customers. Featuring two 5 megapixel cameras, Blue LED and multi-line high-speed scanning for optimal detail capture and accuracy, 3Shape E scanners enable labs to complete more cases in less time. The E scanners improve lab productivity with time and cost saving features like 3Shape's reliable impression scanning and Auto-start. Impression scanning enables labs to scan traditional impressions directly without having to pour a model. Auto-start starts the scanning as soon as the model is placed inside the E scanner. The E scanners also support 3Shape's superior articulator transfer system that accurately transfers the position of a model in an articulator into the software for enabling CAD design.

Enjoy the freedom of wireless scanning

The TRIOS 3 Wireless features the same insane speed, documented accuracy and leading technologies that made the digital color impression solution the winner of the Cellerant Best of Class Technology Award for Intraoral Scanners the last four years in a row. Innovative technologies include: intraoral scanning in lifelike colors, built-in shade measurement, an intraoral camera, and HD photos.

The TRIOS 3 Wireless connects via Wi-Fi to laptops and the TRIOS cart. This eliminates the need for a connecting cable between the intraoral scanner wand and computer. To make scanning simpler, the TRIOS 3 Wireless wand can be used to navigate between scan pages on the PC so that there's no need to touch the keyboard or mouse when scanning a patient. TRIOS 3 Wireless features an easy battery exchange for non-stop scanning and includes three long-lasting rechargeable batteries with the digital color impression solution.

Visit us on stand D70



2 EASY WAYS TO SECURE YOUR FREE PASS:

1

TELEPHONE:
+44 (0)207 0134 992

2

ONLINE:
www.thedentistryshow.co.uk/launchpad

Philips extends its connection with the dental profession

The latest launches at the Dentistry Show extend Philips' expertise in connected technology to breathe new life into the treatment of halitosis with the official launch of BreathCare. The Show marks the UK launch of an uber stylish new Sonicare toothbrush which builds on the healthcare and behavioural changes brought about by the connectivity innovation and technological wizardry initiated with Sonicare FlexCare Platinum Connected. It also ramps up Sonicare's bathroom and Millennial appeal. The company will also be spotlighting its unique three-phased tooth whitening approach.

Philips is supporting three main-stage lectures; Juliette Reeves lectures on Nutritional Manipulation of Chronic Inflammation; Dr Zaki Kanaan gives a teeth whitening update for Hygienists and Therapists whilst Dr Ben Atkins shares how behaviour change in the dental practice can make oral health profitable.

Visit Stand J30 for an extensive daily programme of talks and panel discussions with highly respected dental experts.

Philips Oral Healthcare – Main Programme Sessions

Day/Time	Location	Speaker	Session Title
Friday 12 th 12:55pm	Hygienist Forum	Dr. Zaki Kanaan	Teeth Whitening: An Update for Hygienists and Therapists
Friday 12 th 2:55pm	Perio Lounge	Juliette Reeves	Nutritional Manipulation of Chronic Inflammation – New Concepts in Oral-Systemic Disease Associations
Saturday 13 th 2:45pm	GDP Forum	Dr. Ben Atkins	Behaviour Change in the dental practice: Making Oral Health Profitable.

On Stand – Friday 12th

Day/Time	Speaker	Session Title
10:30am-11:00am	Dr. Alif Moosajee	Breathing new life into dentistry
11:30am-12:00pm	Dr. Zaki Kanaan	Shining a light on tooth whitening
2:00pm-2:50pm	A panel of experts including: Anna Middleton, Mel Prebble, Juliette Reeves, Christina Chatfield, Sarah Murray	Shining Examples of good dental hygiene practice
3:00pm-3:30pm	Dr. Rhona Eskander	BB – a bonding experience with the Young Dentist of the Year
3:30pm-4:00pm	Dr. Milad Shadrooh	Singing from the same hymn sheet: A positive voice in dentistry

On Stand – Saturday 13th

Day/Time	Speaker	Session Title
10:30am-11:00am	Dr. Milad Shadrooh	Singing from the same hymn sheet: A positive voice in dentistry
11:30am-12:00pm	Dr. Rhona Eskander	Making the most of teeth whitening
2:00pm-2:30pm	Dr. Alif Moosajee	Breathing new life into dentistry
2:30pm-3:00pm	Dr. Zaki Kanaan	Shining a light on tooth whitening

Alexandra

DS

At Alexandra, we've been supplying quality workwear to both public and private dental practices for over 25 years. It's helped make us the largest single supplier of ready-to-wear workwear in the UK.



We really appreciate how important image is to you in creating the right impression for your clients. However we also design garments with as much consideration for comfort and functionality as for cut and style, because we want you to enjoy wearing our workwear too.

We now offer 19 colours across our lightweight, poly/cotton scrub sets. Available in unisex and female fits in sizes XS to 4XL, offering you more choice than ever before.

Visit stand E38 to see our full range of dental workwear from Alexandra and to discuss your needs with us. Alexandra. 0333 600 1111. Alexandra.co.uk.

Visit us on stand E38

Best Dentist

DS

Sign up for FREE on Bestdentist.co.uk today, one of the fastest growing UK dental directories and showcase your business to thousands of potential patients. Best Dentist launches officially on the 12th of May at the Dentistry show in Birmingham.

Our in house marketing team are here to help you show off your practice in the best light, with a whole host of affordable digital marketing services including photography, video production, web design and more. All new signups are automatically nominated for the 2017 Best Dentist awards, where will be selecting the Best Dentist from each region and showcasing their glory.

Don't miss out on free advertising, sign up with us today and come say hello at stand H104 at the Dentistry Show.

Visit us on stand H104



BlueRecru

DS

Developed by a Leading Software Developer, Dentist and Doctor, BlueRecru is an exciting new locum software platform. It has been specifically designed to make the recruiting of Dentists and Dental Care Professional locums easier and cheaper. We believe current locum solutions available on the market need bringing into the digital age.

BlueRecru works alongside employers by allowing a simple interface to release and control multiple vacancies at the fraction of the costs associated with more traditional locum recruitment services.

The advantage of BlueRecru for locum candidates is the ability to find location based jobs, easy management of multiple bookings in one simple smartphone app, earn more money and be paid within 48 hours of completing a job.

Come visit us on Stand H104 for a demonstration of our product and to take advantage of our conference specific discounts.

Contact: Amit Kumar, 07886959870, amit@bluerecru.com

Visit us on stand H104

Caradoc Dental Services

DS

Caradoc Dental Services runs a national buying group which is free to join with no membership fees. Through the collective buying power of our members, we can negotiate more competitive prices and terms with suppliers than members can if they purchase goods and services individually.



We work with a number of approved suppliers who provide high quality products and services for our dental members; from dental consumables and equipment, stationery and uniforms, to business services including insurance, mailing services, accountancy and telephony solutions.

Caradoc works to support NHS, private and mixed dental practices with competitive pricing and money saving initiatives. As a not-for-profit organisation, benefits are passed to members and surplus invested into local health economies.

We are delighted to have Brookson, Docmail, Fluid Network Solutions, Lockton and Practice Supplies joining us at The Dentistry Show - visit us on stand B57 to see what we can do for you.

Visit us on stand B57

**2 EASY WAYS TO SECURE
YOUR FREE PASS:**

1

TELEPHONE:
+44 (0)207 0134 992

2

ONLINE:
www.thedentistryshow.co.uk/launchpad



Affordable cosmetic tooth alignment for practices looking to meet patient demand for a new smile



Cfast is a gentle, minimally invasive short-term orthodontic treatment for adults that uses sound clinical principles to straighten the upper and lower front six teeth.

The cosmetic teeth-straightening system is comfortable, safe and affordable and uses tooth-coloured wires and clear brackets to gently straighten the 'social six'.

The system straightens teeth in a controlled and predictable way and uses lighter forces than traditional orthodontics, so it is more comfortable as well as faster – major considerations for today's patient looking to improve their smile.

And, for those patients seeking total discretion, SmileTRU is the clear aligner option; the transparent sequential positioner system offers comfort and convenience.

The Cfast team also provides dentists with full clinical support and training resources at the touch of a button.

For more information, visit www.cfastresults.com, email info@cfasteresults.co.uk or call 0844 209 7035.

Visit us on stand K80

Chiral Systems is an award-winning, agile and intuitive practice management system, that runs on Mac and PC, with backups and updates delivered remotely and securely with no intervention at user end.



Initially designed for the high-end private practice, the system has evolved to accommodate for NHS reporting and orthodontic assessments.

Driven to provide one complete software package, that allows a full digital workflow, Chiral delivers tangible benefits to all users, having been intuitively created to work just the way you do.

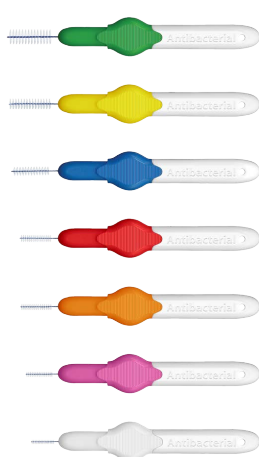
Chiral Systems is a fully customisable centralised platform. It provides sophisticated and powerful features for best practice outcomes in patient and clinical management, business performance and compliance, in a brand new integrated way.

Come to Stand L32 to see how Chiral Systems can streamline your practice administration and transform your business. Special show offer – Save £1,238 with a free training package for any system purchased on the day.

Visit us on stand L32

ICON® INTERDENTAL

New Antibacterial Interdental Brushes



Antibacterial bristles & cap



Wires resistant to buckling and breaking



Coated wires to prevent galvanic shock



Email : sales@stoddard.uk
Website : www.icon-idb.uk
Telephone : 01462 686221



Easy to use; gently move back and forth



Bends up to 45 degrees

**Next Generation
Dental Keyboard,
GOES WIRELESS**



For some time studies have shown that computer keyboards need to be 100% flat, so they can be cleaned quickly in situ. However they also need to be easy type so staff can still touch type. **Purekeys** keyboards and mice are exclusively sold by CliniTech Medical and include both features to allow Dental practices to perform best practice cleaning, which is between every patient. Existing **Purekeys** products are gaining traction within the NHS and other Health and wellbeing sectors as they can demonstrate 5 or more new design features, which make them the next generation design of 100% flat easy use keyboards. See for yourself the new HTM-0105 compliant Wireless Keyboard and Mouse launching at the Dentistry Show NEC 2017, stand E76. We're so confident in the product we offer 7 day money back guarantees, subject to terms.

Visit us on stand E76

2 EASY WAYS TO SECURE YOUR FREE PASS:

1

TELEPHONE:
+44 (0)207 0134 992

2

ONLINE:
www.thedentistryshow.co.uk/launchpad

Reducing Airborne Bacteria To Acceptable Levels...

needn't be impractical nor expensive within practice with the new introduction of the "**Klean**" an air cleaning system from CliniTech Medical. A user installed, 24/7 operation, desktop technology that uniquely creates bacteria killing air in doors. The well proven natural disinfection affects of open out door air are known as the "Open Air Factor" Our atmosphere produces billions of energy particles that clean the air from bacteria, virus's, allergens and pollutants. The small and easy to use device is available for each surgery room, decontamination room and beyond. The patented technology reduces airborne bacteria to very low levels, reducing the number that will land on instruments, patients, high touch points and staff. The device also has a secondary affect on surfaces, helping to improve the overall health and wellbeing of the working environment for both patients and staff. Find out more at stand E76.



Visit us on stand E76

WHITE FILLING

Too much white space in your practice appointment book?

We'll help you fill it! At Milkshake, our aim is the same as yours - to grow your practice. The difference? Our in-house team will be busy, delivering a bespoke blend of targeted and effective marketing to fill your appointment book, meaning you can stay busy doing what you do best.

10% off all packages

We're offering 10% off all of our packages if you sign up with us at the show.* This will be a popular offer, so beat the crowds by pre-booking your consultation and guaranteeing your time slot.

Call us today on 01844 292086 to pre-book and get us on your side!

milkshakedental.co.uk 01844 292086 f t i n a g+

*Offer applies to packages at the Dentistry Show, 12th-13th May 2017 only.

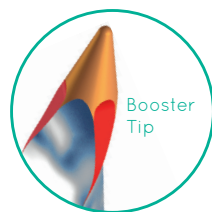


**10%
OFF**

milkShake
potentially headed marketing



schottlander
improving dentistry together



XP-endo Shaper

3D preparation & cleaning from a **single rotary file**



The **NEW XP-endo Shaper** is a single rotary endodontic file, with a quick and simple protocol, that allows you to prepare root canals to their actual shape in three dimensions.

The **XP-endo Shaper** contacts more of the canal walls and vortexes debris out of them, preventing blockages and leaving it cleaner. Its unique shape memory allows it to expand in the canal, shaping the ones that are oval as well as round.

The simple protocol only requires a glide path prepared to size 15, after which a single **XP-endo Shaper** will quickly reach working length. Users are finding that they can clean and shape canals more effectively, while saving time - *often taking 20 to 30 minutes less for a molar.*

Hands-on training sessions on
Schottlander Stand B20 will be taught by:



Prof James Prichard



Dr Justin Dinley



Dr Dani Mancuso



Dr James Aquilina



Dr Anish Khatri

For further information contact Schottlander on
freephone 0800 97 000 79 or visit www.schottlander.com

Celtra Press – Makes the difference

Celtra Press is the new class of high-strength glass, zirconia-reinforced lithium silicate material coming soon to the UK. Celtra Press scores twice where aesthetics are concerned: The special microstructure, with its particularly fine crystalline structure and high glass-content, provides the material with outstanding light-optical properties. Thanks to this combination of high translucency and opalescence, Celtra Press exhibits an amazingly natural chameleon effect and is virtually impossible to tell apart from a natural tooth.

Celtra Press ingots, together with the system components of a veneering porcelain, Celtra Ceram, and Celtra Press Investment material will be available later this year.

Visit us on stand C25 & C30



Dentsply Sirona

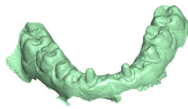
CEREC® - Digital, flexible and now, OPEN!

For over 30 years CEREC® from Dentsply Sirona has provided a comprehensive and proven digital system for delivering restorations in a single visit. Now its applications are expanding and guided placement, restoration of implants and a variety of orthodontic solutions are also covered by this versatile system.

Offering clinicians even greater flexibility, the CEREC system has been opened up for the export of scan data in STL format. This creates new possibilities for clinicians by enabling data from CEREC digital impressions to be used in software products from other manufacturers, and allows them to send CEREC scans to a laboratory of their choice regardless of the software being used. Scan data can also be loaded into implant planning software from other manufacturers, providing clinicians with support in the preparation of implant procedures.

To find out more please contact Dentsply Sirona on 0800 072 3313 or visit www.dentsply.com/en-uk

Visit us on stand C25 & C30



Dentsply Sirona

Atlantis™ CustomBase solutions for patient-specific, single tooth restorations

Empowering dental professionals to provide better, safer and faster dental care, new Atlantis™ CustomBase solutions eliminate the time needed for waxing, casting and grinding, increasing predictability of the final outcome and ultimately helping to improve efficiency and profitability. Streamlining the outsourced workflow removes the need for investing in or maintaining additional equipment and software, with no annual cost for design software licences and makes workflow less vulnerable to times of peak demand. CustomBase solutions offer technicians total peace of mind should there ever be a problem as all crowns and abutments are covered by a comprehensive Atlantis 10-year warranty and expert customer support.

Visit us on stand C25 & C30



DFAB®: the waiting is over. Class IIa restorations within 20 minutes



After a first preview at CDS Midwinter and LMT Labday in Chicago on February 2017, DWS officially launch DFAB® at IDS Cologne.

DFAB® is a 3D printer developed for dentists and prosthodontists with the purpose of increasing the efficiency and reducing the number of procedures for the production of dental prostheses. It allows to produce up to five-element bridges in less than 20 minutes.

The technology behind this is the Photoshade, a system that allows to reproduce the colour of the patient's teeth, as well as shades, giving the prosthesis a natural appearance.

Starting from an .stl file, elaborated after an intraoral scan, the user selects colours and shades of the restoration through the software. The choice of the colours can be selected in a range between A1 and A3.5 of the Vita^{*1} scale; as a result, the finished product obtained is customized.

DFAB® is an integrated system with disposable cartridges containing Temporis^{*2}, the Class IIa biocompatible material. Recent studies and tests on this material have shown mechanical strength values that are comparable to a well-established restorative resin material made of hybrid composite^{*3}. The cartridges are ready to use and conceived to maintain the workplace hygiene, avoiding the risk of accidental leakage and contamination. Compared to the traditional systems, the disposable cartridge allows an easy material change and prevents unnecessary cleaning and maintenance of platform and resin tank.

With a 40-micron laser spot, DFAB® ensures an accurate fitting and a correct occlusion. The high speed printing guarantees a 20-minute building time of a 5-element bridge, providing a treatment that could be completed in a single visit, without the involvement of external dental labs.

DFAB® has a minimal and modern design that adds value to the dental clinic. DFAB® does not produce any noise or dust and does not require tooling. It is available in desktop and chairside version with a 7" touch-screen computer.

The software interface is intuitive: once the file is imported, the user is guided till the print launch with the best user experience.

DFAB® will be available from October 2017.

<http://www.dwssystems.com/dfab>

Visit us on stand E32

^{*1} Trademarks property of their respective owners.
^{*2} The polymer is to be considered a long-term invasive medical device in Class IIa as provided for by the Rule 5, Annex IX, Dir. 93/42/EEC.
^{*3} Alharbi, Nawal, Reham Osman, and Daniel Wismeijer. "Effects of build direction on the mechanical properties of 3D-printed complete coverage interim dental restorations." The Journal of prosthetic dentistry 115.6 (2016): 760-767.

Dental practices must demonstrate that they provide and maintain a clean and appropriate environment, that facilitates the prevention and control of healthcare associated infections. Recent initiatives place dental practices under even greater pressure to ensure cleanliness of reusable equipment is clearly indicated to those who use them¹.



The green Clinell Clean Indicator Notes were developed in conjunction with Guy's & St. Thomas' Infection Control Department. We created a wipeable, self-adhesive note that attaches to equipment. The note records the date, time and name of the person that cleaned the item, ensuring a clear audit trail and providing staff and patients with visual assurance that items are safe to use.

The red Clinell Clean Indicator notes were developed for situations where it is not always possible to clean equipment immediately after patient use. This helps identify equipment that still requires cleaning in order to prevent cross-contamination.

The Clinell Clean Indicator products are available as either note pads or rolls. They are self-adhesive and easy to affix to dental equipment, making them ideal for implementing and supporting effective hygiene procedures.

Visit us on stand K50

1. Department of Health (2008) The Health and Social Care Act 2008: code of practice on the prevention and control of infections and related guidance

GSK

Corsodyl Ultra Clean Toothpaste is a twice daily specialist gum health toothpaste which is 4x more effective at removing plaque than a regular toothpaste*. Corsodyl Toothpaste is clinically proven to reduce plaque, bleeding gums and inflammation. The formulation contains 1450ppm fluoride to keep teeth strong and 67% sodium bicarbonate which works to disrupt the polysaccharide matrix which holds plaque together, making it easier to remove. Corsodyl Ultra Clean Toothpaste is our brand new herb free formulation with added mint and eucalyptus for an ultra clean taste[†]



*after a professional clean and twice daily brushing

Visit us on stand B30

2 EASY WAYS TO SECURE YOUR FREE PASS:

1 TELEPHONE:
+44 (0)207 0134 992

2 ONLINE:
www.thedentistryshow.co.uk/launchpad

Have you made the switch to Clinell Universal?

Clinell's Universal range includes a variety of products for cleaning and surface disinfection of non-invasive medical devices. Each wipe contains a mix of biocides with different mechanisms of action to prevent bacterial resistance and superbug formation¹. This unique, patented, antimicrobial formula act as a detergent and disinfectant wipe – replacing the need for multiple wipes and surface cleaners.



Ready-to-use disinfectant wet wipes increase cleaning compliance² – with associated cost savings in terms of staff time. The Universal range is extensive; from packs that come with an easy to close clip lid, to prevent the wipes drying out, to unique wall mounted dispensers that provide a hygienic and accessible solution for quick and easy wipe dispensing.

You should always have confidence that you are not damaging your medical devices when cleaning. Clinell continually collaborates with medical device manufacturers to create an extensive list of Universal compatible equipment.

Visit us on stand K50

1. Bloomfield SF. Significance of biocide usage and antimicrobial resistance in domiciliary environments. *Journal of Applied Microbiology*. 2002; **92**(s1).
2. Wiemken T. et al 2014. The value of ready-to-use disinfectant wipes: compliance, employee time, and costs. *Am J Infect Control*, **42**, 329-30.

Gama

Spring clean your computer accessories!

Up to 95% of keyboards test positive for harmful microorganisms before cleaning¹. HTM 01-05 guidelines recommend hospitals have washable keyboards and that they should be disinfected daily. Effectively cleaning conventional keyboards can be difficult so it is recommended they should be replaced with 'easy-clean' waterproof keyboards^{2,3}.



Clinell's range of wipeable EasyClean computer accessories has been developed to simplify cleaning procedures and increase compliance. The range consists of wipeable silicone keyboards and mice, a conventional true type keyboard and silicone smartcard readers. Compatible with most hospital disinfectants they can withstand daily cleaning procedures, even with chlorine. Our silicone keyboards and mice meet IP68 specifications, making them 100% waterproof and dishwasher safe.

Our True Type, durable, laser-etched keyboard looks and feels like a conventional keyboard – with no clumsy covers – unlike other existing 'easy-clean' keyboards. Our EasyClean seamless silicone range allow for quick cleaning without any unplugging. The perfect solution to support your dental cleaning regimes.

Visit us on stand K50

1. Rutala WA, et al. Bacterial contamination of keyboards: efficacy and functional impact of disinfectants. *Infect Control Hosp Epidemiol*, 2006; **27**(4): p. 372-7.
2. Department of Health (2008) Clean, safe care: reducing infections and saving lives. DH: London
3. Health Technical Memorandum 01-05: Decontamination in primary care dental practices (2013) DH: London

CALCIVIS

CALCIVIS will be on stand L48 at this year's Dentistry Show to launch its state-of-the-art imaging system. Through the use of a unique bioluminescent photoprotein, the CALCIVIS imaging system maps active demineralisation on the tooth surface, quickly providing a clear image that serves as the first objective means of identifying active caries at its earliest and, critically most reversible stage

CALCIVIS is working closely with some of the world's preeminent cariologists and dental professionals and is supporting a first rate speaker program at Dentistry Show. This includes a lecture by Amanda Gallie, who will be taking to the stand in the Hygienist & Therapist Symposium to examine key risk assessment plans and current thinking on how to determine the effectiveness of various approaches in caries detection and monitoring – including the CALCIVIS imaging system.

"Exploring the clinical application of the latest solutions is integral to keeping on top of the early detection and prevention of dental caries," says Amanda. "By addressing such matters, I hope that delegates attending the lecture leave with not only a better understanding of the technologies that are available to them, but also with improved knowledge of a tried and tested caries index that can be used in practice."

Amanda's lecture will be reinforced by Professor Nigel Pitts's lecture in the GDP Forum, where he will also be

discussing how 21st century methods of caries detection are changing the dental landscape for the better. Nigel is Professor of Dental Health at King's College London, a leader of the ICCMS™ caries management initiative and chair of the ACFF - Alliance for Cavity Free Future. He is an Honorary Consultant in Dental Public Health to Guy's and St Thomas' NHS Foundation Trust and past president of the European Organisation for Caries Research (ORCA). His lecture aims to discuss the best methods of assessing demineralisation sites and caries activity by using the very latest technologies, such as the CALCIVIS imaging system, to identify caries activity and improve chair side communication in an attempt to facilitate better preventive dentistry.

CALCIVIS is delighted to have Amanda and Nigel on board, for what promise to be enlightening lectures. The CALCIVIS team will be on stand L48 to give delegates a virtual reality tour of the unique CALCIVIS imaging system, as well as to offer an exclusive show promotion for the first 200 trial registrations.

Be sure to visit the Stand L48 for "dental enlightenment" and to see for yourself how CALCIVIS helps make the invisible visible.



Enlightenment awaits.
Visit stand L48

calcivis.com

CALCIVIS
dental enlightenment

Offering Patients treatment in a safe environment and minimizing cross-infection risks through transference is any healthcare workers daily priority but do you consider the role of your keyboards and mice in achieving this?



We know that standard keyboards are a trap for germs and bacteria and are difficult to clean.

This is why the HTM 01-05 STATES: "Conventional keyboards should be replaced with 'easy clean' waterproof keyboards"

iPREVENT® have developed a range of waterproof keyboards & mice to help ensure your practice complies with Department of Health's (2008) 'Clean, safe care: reducing infections and saving lives.

We pride ourselves on quality products at affordable prices! What more we have some exciting offers at the show! come and visit us at stand F42 to see he show discounts we are offering!

Visit us on stand F42

ISFY International Ltd

Discover World Class Dental Instruments from ISFY International Ltd – Stand B54.



ISFY International Ltd is a UK based family company manufacturing a full range of unique and differentiated dental instruments of exceptional quality and value.

At the Dentistry Show we are delighted to launch our nano matt black range of Anaqa dental instruments which includes orthodontic pliers, extraction forceps, elevators, periodontal and restorative instruments and a universal dental syringe which is designed to accept both a 1.8ml and 2.2ml anaesthetic vials.

All Anaqa instruments are made with the finest quality titanium coated steel and carbide tips which are manufactured in the UK.

Anaqa instruments come with an industry leading warranty ranging from 2 to 7 years.

The ISFY team look forward to welcoming everyone our stand.

To find out more about ISFY International Ltd, please visit www.isfy.co.uk

Visit us on stand B54

The Primus 1058 Life from KaVo

The Primus 1058 has been the synonym for quality and reliability in the dental world for over 15 years.

Consequently, our development team has passionately designed the new Primus 1058 Life around these core values whilst adding a significant number of improvements and innovations...



- Streamlined chair design in modern dental white
- Higher max. patient weight up to 185 kg
- Integrated Trendelenburg movement for higher patient comfort
- Extended highest/lowest positions
- New dentist element with intuitive design
- Improved operating concept with direct selection buttons
- Assistant element with clearly structured film keypad
- KaVo ERGOcam One1 integrated into dentist element
- New high resolution KaVo screens, 19" and 22"
- The new CONEXIO[®] system software

Find out more on stand H75 at Dentistry Show or download our e-book at: go.kavo.com/uk/ebook1058life

Visit us on stand H75

iOptional accessories
iiOptional accessories

Kulzer

cara Print 4.0 - The new 3D Printer from Kulzer



KULZER
MITSUBISHI CHEMICALS GROUP

Are you looking for a faster, more economical method of producing polymer-based dental appliances in-house? Then cara Print 4.0 is right for you. Not only does it provide a cost-effective alternative to milling for certain indications, it is more efficient than other 3D printers on the market, while still meeting all accuracy requirements.

Key benefits of cara Print 4.0

- Quick: one of the fastest on the dental market (most print results in under an hour).
- Precise: meets 3D-accuracy requirements for all applications.
- Economical: reduces costs and processing time.

Digital Light Projection (DLP) makes cara Print 4.0 quicker, more economical and more accurate than laser-based systems. And it's even faster than most other DLP systems.

Visit us at stand B01 to find out more or watch the video here: website.kulzer.com/3DPrint

Visit us on stand B01 & N55

Narval

DS

The Narval CC is an MRD for the treatment of adult obstructive sleep apnoea and snoring.

Your Narval CC device will be custom made using CAD/CAM technology to suit your unique dental anatomy. The result is a discreet, comfortable, effective solution that's clinically proven to reduce the symptoms of snoring and sleep apnoea improving quality of life.

Ultra-light and flexible, Narval CC is one of the lightest devices on the market with durability guaranteed.

Narval CC is highly effective: in one of the world's largest MRD multicentre clinical studies 84% of patients achieved successful therapy.

Narval CC is comfortable and easy to wear. In a recent clinical study, patients wore their Narval CC 6.7 hours per night for 6.6 nights per week.

Regular use of Narval CC is associated with a rapid improvement on parameters of sleepiness and quality of life.

For more information contact

David 02082925181

Sean 01915652788

Visit us on stand F57



Planmeca

DS

Planmeca Emerald™ - The crown jewel of intraoral scanning

Planmeca is expanding its' CAD/CAM product range with a new light intraoral scanner – the 183 gram **Planmeca Emerald™**.

The new intraoral scanner is a small, lightweight, and exceedingly fast scanner with superior accuracy. It is the perfect tool for smooth and efficient chairside workflow.

The compact intraoral scanner makes intraoral imaging easy for the dentist and highly comfortable for the patient, whilst ensuring optimal ergonomics. The scanner's active anti-fog feature of its' tip mirror ensures visibility is always clear. Infection control is impeccable with the scanner's autoclavable tip and seamless design.

This simple plug-and-play solution makes it easy to share between operatories. The dental unit integration enables hands-free operation with the foot control. The scanner is compatible with Planmeca Romexis® and Planmeca PlanCAD® Easy software suites for constant access to real-time scanning data.

To find out more about **Planmeca Emerald™** and its' availability, join us on Stand G30 at The Dentistry Show where delegates will have the opportunity to get hands on with Planmeca's new revolutionary scanner.

Visit us on stand G30



Philips

DS

Lift off

2017 sees even greater momentum towards Philips Oral Healthcare's connected vision with the launch of two unique products in one technologically and clinically advanced platform.

A new flagship innovation –DiamondClean Smart – is the world's most intelligent toothbrush, which delivers exceptional oral care results thanks to built-in smart sensor technology in the toothbrush and personalized coaching within the platform to help improve patients' brushing technique. The Philips Sonicare BreathCare system, featuring a new connected breath analyzer, measures, tracks and helps patients address the impact of oral bacteria on breath quality, helping them to improve their breath and oral care habits. Both products seamlessly sync with the Philips Sonicare app, giving users data and guidance to empower them to proactively manage and improve their oral health in one platform.

There is also an extension to the AirFloss interproximal cleaning device, making it even more patient-friendly to encourage greater compliance.

www.philips.co.uk/dentalprofessional

Visit us on stand J30



Planmeca

DS

Planmeca PlanMill® 30 S – Enter the world of digital dental production

Planmeca's new entry-level milling unit, **Planmeca PlanMill® 30 S**, has been developed for dental businesses looking for an efficient, accurate, and cost-effective milling solution.

The high-accuracy unit has been designed for the chairside fabrication of metal-free dental restorations and appliances. The milling unit is equipped with a rotary axis for milling blocks of choice, and a fixed tool changer for three tools. The unit integrates seamlessly with Planmeca's intraoral scanners and Planmeca Romexis® software suite.

To see **Planmeca PlanMill® 30 S** in action and learn more about its' features, come and visit us on Stand G30 at The Dentistry Show.

Visit us on stand G30



Planmeca Solea™ - For brighter workdays

Planmeca has introduced a new dental operating light, **Planmeca Solea™**, combining optimum visibility with complete adjustability.



The operating light gives perfect visibility over the entire treatment area with adjustable brightness between 8,000 and 50,000 lux and colour temperature that can be adjusted to warm, neutral, or cool.

The advanced LED technology and mirror optics of the light provide excellent visibility to every corner of the treatment area, minimising the need to adjust the light head during treatment. The sharp edges of the light beam also make the light eye-friendly for the patient.

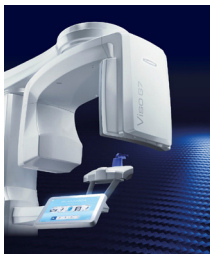
The pioneering detachable and autoclavable handles combined with the dustproof light capsule and seamless one-piece back cover, guarantee optimal infection control. Composite mode enables safe use of composite materials and prevents pre-polymerisation effect. The light can also be connected to the Planmeca Romexis® software to get reliable information on the use of the light.

To discover more about how **Planmeca Solea™** dental operating light can benefit your practice, visit us on Stand G30 at The Dentistry Show.

Visit us on stand G30

Planmeca Viso™ - The next generation has arrived

Introducing unique patient positioning, free FOV adjustments and intelligent patient movement correction, the new **Planmeca Viso™** X-ray unit is the next step forward in the evolution of cone beam imaging.



The next generation CBCT unit is capable of capturing outstanding images at a low patient dose even during longer working days. With high image quality, exceptional durability, and the Planmeca Ultra Low Dose™ imaging option, **Planmeca Viso™** has all the qualities of a premium CBCT unit – and more.

There will be no need for retakes as the new iterative **Planmeca CALM™** algorithm for patient movement correction ensures successful results every time. The unit's new imaging arm design also provides increased patient space and shorter acquisition times.

Planmeca Viso™ elevates the imaging experience to an entirely new level. To learn more about the new unit and its' features, come and visit us at The Dentistry Show on Stand G30, where our imaging specialists will be happy to introduce you to the unit.

Visit us on stand G30

Planmeca Stools - A form that follows you

The newest members to Planmeca's stool selection, **Planmeca Lumo™** and **Planmeca Olo™** provide outstanding support and



comfort to users of all heights and sizes. The anatomically designed stools are available in all Comfy™ and Ultra Relax™ upholstery colours – forming a perfect match with Planmeca dental units.

The distinguished design of the **Planmeca Lumo™** is in line with other Planmeca products. The stool enables smooth movement on all kinds of floors and when enabled, synchro backrest follows every move.

Recently launched, **Planmeca Olo™** saddle stool gives the back its most natural position during the treatment sessions. The unique shape of the foot ring allows close proximity to patient and other stools when needed. The exceptional design of the seat features handles and the uniform design contributes to perfect infection control.

For a form that follows you, join us on Stand G30 at The Dentistry show and find your seating solution.

Visit us on stand G30

Schottlander was founded in 1922 and have prospered and are growing through an absolute commitment to the highest high quality products, training and services that answer genuine clinical needs. We have twice received the Queens' Award for Enterprise in the Innovation Category.

schottlander
improving dentistry together

At the show we will be demonstrating our newest and most innovative products, including:

The NEW XP-endo Shaper is a single rotary endodontic file, with a quick and simple protocol. It helps you to improve patient outcomes by preparing root canals to their actual 3D shape while preserving dentine and reducing stress to the root.

enigmallife are our market leading denture teeth which look and feel like your patients' own teeth, helping them to regain their appearance and function. We will also be launching 4natur denture teeth for a more cost effective way of 'Creating Beautiful Smiles, Naturally'

For further details on any Schottlander products please call us on Freephone 0800 97 000 79 or visit www.schottlander.com

Visit us on stand B20

Online Verifiable CPD from Wrights Academy

NEW!

REGISTER AT
DENTISTRY AND
CLAIM
2 FREE COURSES!*

www.wrightdental.co.uk/CPD-courses
Quote DENTISTRY at checkout

STEP 1

Register online and
create an account.



STEP 2

Choose from a wide
range of courses
and learn at your
own pace.



STEP 3

Take the online
exam and pass
the course.



STEP 4

Print your personal
CPD certificate!



Online Verifiable CPD Academy



From only £10 per course



GDC core subjects covered



Visit www.wrightdental.co.uk/CPD-courses today!

*Apply coupon code DENTISTRY at checkout. Coupon is limited to two free courses per registration and valid until Friday 19th May 2017.

SCHOTTLANDER LAUNCH A NEW PRIVATE DENTURE TOOTH

schoTtlander
improving dentistry together

If every patient's budget would stretch to the very best, then it would be easy - enigmallife would be the best option for everyone. However, in reality the private denture market covers a range of budgets and both clinicians and technicians want to provide their patients with options.

Whatever their budget, patients still want really beautiful and truly functional dentures from you. We have therefore introduced 4natur as enigmallife's talented younger sibling, whose family pedigree is there to see.

4natur are head and shoulders above other teeth at the same price range in the market and a significant advance even on the Natura range. They are a private tooth you can be proud to prescribe to your patients, yet one at a remarkably attractive cost.

Although significantly improved, most of the moulds will be familiar to Natura users. We have dropped moulds which were not much used and added new ones which fulfil clinical needs. Current Natura users will be comfortable and at home with 4natur and we believe everyone will recognise the advance that 4natur provides.

In addition, as well as the A1 - D4 shade range there will shortly be a new bleach shade BL3.

For further information on 4natur please call Schottlander on Freephone 0800 97 000 79 or visit www.schottlander.com

Visit us on stand B20

Schottlander

DS

The Revolutionary NEW XP- endo Shaper

3D preparation and cleaning from a single rotary file.

schoTtlander
improving dentistry together

Prepares to the shape of the canal not to the shape of the instrument.

Visit Schottlander at The Dentistry Show, NEC Birmingham – May 12 & 13, on stand B20 for a series of live demonstrations and fast moving hands-on sessions.

Professor James Prichard, Dr Justin Dinley, Dr Anish Khatri, Dr James Aquilina or Dr Dani Mancuso will teach delegates how to use recent advances in endodontic treatment, including the single rotary file XP-endo Shaper, to improve patient clinical outcomes.

Visit us on stand B20

2 EASY WAYS TO SECURE YOUR FREE PASS:

1

TELEPHONE:
+44 (0)207 0134 992

2

ONLINE:
www.thedentistryshow.co.uk/launchpad

STATIM G4 – the new generation

SciCan
Your Infection Control Specialist™

SciCan's STATIM autoclaves have been well recognized as being gentle and quicker than most autoclaves. The STATIM 2000 G4 and STATIM 5000 G4 models still offer the characteristic steam technology. Additionally to the new design, the G4 line offers many user-friendly, innovative and, above all, interactive possibilities.

The colour touch screen facilitates an easy and clear operation of the unit. By using the integrated Ethernet port, the STATIM G4 can be connected directly to the office network. Users that access the web portal can view informations about current cycle or any previous cycle the unit has ever run. The STATIM can also email cycle data or possible cycle fault information directly to office staff or a service technician.

With its interactive possibilities, the STATIM G4 helps to streamline office processes, increase efficiency and safety and also cut costs.

For more information contact:

uksales@scican.com or dial 07415 005 966

Visit us on stand B80

Smile Ortho

DS

Introducing H4™ Self-Ligating System

We are proud to present the newest bracket system, the H4™ Self-Ligating System. The easy to use sliding door mechanism and sturdy design was meticulously engineered with the highest standards. The unique one-piece pad/base is built with torque-in-base and compound contour with patent pending Tread-Lok™ base for a strong bond with teeth. The H4 is a low-friction, light force orthodontic solution that delivers healthy tooth movement with optimal control. The contoured trajectory of the slide and smooth rounded edges increase patient comfort.

Visit us on stand J78

Stoddard

DS

The New ICON Antibacterial Interdental Brush range offers you and your patients all the benefits of a strong, flexible and durable brush

ICON®

with added antibacterial protection. ICON's antibacterial agent prevents 99.9% of bacteria from growing on the cap & the nylon filaments, keeping the brush bacteria free.

Manufactured in the UK our antibacterial range of 7 sizes ensures that you will find the perfect ICON for you.

We look forward to seeing you at stand H80 so that you can receive more information about our interdental brush range. Why not enter our competition for a chance to win your practice a clinic box containing 180 ICON original interdental brushes.

Visit us on stand H80



ART IS COMING
TO YOUR PRACTICE.

FREE SAMPLE AT STAND H65

EXPERIENCE **HARMONIZE**[™],
THE NEXT GENERATION COMPOSITE INFUSED WITH
ADAPTIVE RESPONSE TECHNOLOGY.

Harmonize begins with **ART**, **A**daptive **R**esponse **T**echnology, a nanoparticle filler network that makes achieving lifelike restorations **EASIER THAN EVER BEFORE**.

Through better blending capabilities and enhanced structural integrity, restorations can finally attain **EXCEPTIONAL STRENGTH** and **UNMATCHED AESTHETICS**.

Science and beauty coming together at last.

www.KerrDental.com

Harmonize[™]
Nanohybrid Universal Composite



ART

Adaptive Response Technology

Surgery Express

DS

Surgery Express is one of the UK's leading suppliers of dental consumables. With many years' experience in the field, the expert team at Surgery Express can offer first-rate products, service and an unbeatable 100% money-back guarantee.



Always striving to bring professionals with the very best products available, Surgery Express is excited to announce their latest range: dental implants from TBR.

Available exclusively from Surgery Express, TBR implants are designed to provide patients with the highest level of comfort and specifically protect the soft tissues of the periodontium. In particular, delegates will be able to learn more about the Z1 implant.

Launched in 2000 after almost 15 years of innovative research on implant restoration, the Z1 implant from TBR is designed to suit the anatomy of every patient. It is the only tissue-level implant on the market that is able to adapt to the surrounding tissues to ensure optimum levels of comfort.

For more information, visit www.surgery-express.co.uk, call on 0800 6888 992 or email at sales@surgery-express.co.uk

Visit us on stand H62 & H70

SurgiSol

DS

SurgiSol is showcasing the ultimate in performance – high quality illumination and maximum image quality with the latest from Heine®s headlights & loupes.



The new Heine® LED LoupeLight2 is 25% brighter and features the combination of light and loupe delivering a perfect view and enables precise diagnosis.

Along with the successful Heine® ML4 LED Headlight Unplugged.

Heine®s optional polarising filters, perfect for surgery; reduces glare from instruments and fluids; endodontics, by reducing brightness on the tooth surface especially when opening the root canal, and aesthetic dentistry by allowing better visualisation of the translucency of tooth components and finding cracks in the enamel, caries, etc.

Heine® loupes are equipped with high quality multi-coated optics to ensure a perfectly detailed view. Available in various magnifications ranging from 2.5x to 6x.

For further information contact SurgiSol Ltd on 0845 508 4651 or www.surgisol.com or visit us on Stand Number F78.

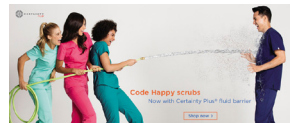
Visit us on stand F78

Work In Style

DS

OTS

Work In Style will be introducing Code Happy uniforms with Antimicrobial + Fluid Barrier technology. Certainty Plus dual protection fabric technology offers the security of a fluid barrier that resists spills plus antimicrobial technology that inhibits the growth of bacteria on the garment.



Everyone wants to be happy. But there's something that always precedes happiness --- peace of mind. That's where Code Happy scrubs with CERTAINTY™ antimicrobial fabric technology begin. Code Happy scrubs are designed for the professional who demands quality and contemporary styling, functional details and above all, comfort.

Code Happy stands out by offering antimicrobial and fluid barrier fabric technologies in comfortable 63 poly/34 cotton/3 spandex poplin that's positive by design.

Visit us on stand B59

Wright's Connections

DS

Wright's Connections offer specially negotiated rates for Wrights customers. A variety of services that can benefit you, your staff and your patients. Wrights Connections has something for every practice whether you need expert advice on marketing your practice, training your staff or insuring your assets. Take a look at what we can offer.



Visit us on stand E80



2 EASY WAYS TO SECURE YOUR FREE PASS:

1

TELEPHONE:
+44 (0)207 0134 992

2

ONLINE:
www.thedentistryshow.co.uk/launchpad



Wright's Connections offer specially negotiated rates for Wrights customers. A variety of services that can benefit you, your staff and your patients. Wrights Connections has something for every practice whether you need expert advice on marketing your practice, training your staff or insuring your assets. Take a look at what we can offer. Visit stand E80 to find out more.

CS 3600

Carestream
DENTAL

ANY COMPANY CAN MAKE A SCANNER
MAKING IT FAST, ACCURATE, EASY AND OPEN IS WHAT WE DO

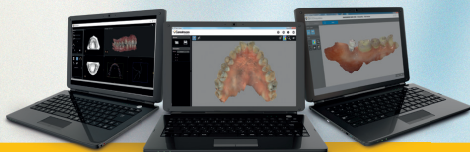


WORKFLOW INTEGRATION | HUMANIZED TECHNOLOGY | DIAGNOSTIC EXCELLENCE

SEE US ON

STAND Nos. D38 & E35

High-speed continuous scanning captures dual arches quickly and easily, while full HD 3D scans simplify communication with patients, referrals and labs. With open system files and no hidden click fees, Carestream Dental has designed the CS 3600 to rise to the challenge of making digital impressions fast, accurate, easy and open, and elevate your practice above the rest.





Complete care for a healthier mouth

Introducing the new **Philips Sonicare
DiamondClean Smart** toothbrush



Smart Sensor Technology

Personalised coaching for
better coverage, reduced
scrubbing and ideal pressure
via the Philips Sonicare app



Smart Brush Head Recognition Technology

Automatically chooses the optimal
mode and intensity level and
monitors brush head lifetime



High Performance Brush Heads

Up to: 10x better plaque
removal¹, 7x healthier gingiva¹
and 5x more stain removal²

innovation  you



www.philips.co.uk/dentalprofessional

1. vs. a manual toothbrush. 2. vs. a manual toothbrush using a leading whitening toothpaste. Phone not included.

© 2017 Koninklijke Philips N.V. (KPNV). All rights reserved. PHILIPS and the Philips shield are trademarks of KPNV. SONICARE and the Sonicare logo are trademarks of KPNV and/or Philips Oral Healthcare, LLC.

PHILIPS
sonicare



HELP KEEP YOUR PATIENTS ON A JOURNEY TO HEALTHY GUMS

**CORSODYL® TOOTHPASTE IS CLINICALLY PROVEN TO
REDUCE PLAQUE, BLEEDING GUMS AND INFLAMMATION**

4X
greater plaque
removal*¹

48%
greater reduction
in bleeding gums*¹



Recommend Corsodyl® Toothpaste to help patients maintain their gum health between dental visits.

*Removes more plaque than a regular toothpaste after a professional clean and twice daily brushing.

Reference: 1. Data on file, GSK, RH02434, January 2015.

Trade marks are owned by or licensed to the GSK group of companies.

CHGBI/CHCSYL/0134/16

G4

A New Wave in Instrument Washing, Disinfection and Sterilization



STATIM® 2000 G4 / 5000 G4
Cassette Autoclave



HYDRIM® C61wd G4
Washer - Disinfector



HYDRIM® M2 G4
Washer - Disinfector



SPEED

STATIM G4, the worlds fastest autoclave from start to sterile in as little as 6 minutes.

HYDRIM G4 can turnover up to 200 instruments in just 35 minutes.



TOUCH

A large touch screen offers communication between the unit and the user, allowing for easy operation, and tutorial viewing.



CONNECT

G4's are capable of communicating with anyone of your choice, including Technical Service personnel.



COLLECT

G4's collect all cycle data and service history, protecting your surgery and patients.

Vik Sharma

UK & India Business Director, SciCan
Tel: (0)741 500 5966
Mailto: Uksales@scican.com