

**EXCeL**  
LONDON

# Welcome to London

After hours guide

# Contents

Our guide on how to make the most of the city, after hours.

## Entertaining your clients

Boisdale Canary Wharf  
 Gaucho Canary Wharf  
 Gaucho O2  
 Peninsula Restaurant  
 Plateau  
 Le Pont de la Tour

## Fancy a pint

The Grapes  
 The Gun  
 The Narrow  
 The Ledger Building

## Night out with the team

Browns  
 Hazev  
 Ibérica  
 Breakfast Club  
 Chai Ki  
 Davy's Wine Bar  
 Giant Robot  
 Pizza Pilgrims  
 The Sipping Room  
 Cantina del Ponte

## Great entertainment

Backyard Comedy Club  
 Bateaux London  
 Everyman Cinema  
 indigo at The O2  
 Encore  
 Holy Smoke - Behind the  
 scenes at H. Forman & Son  
 East London Liquor  
 Company  
 City of London Distillery

## Hidden gems

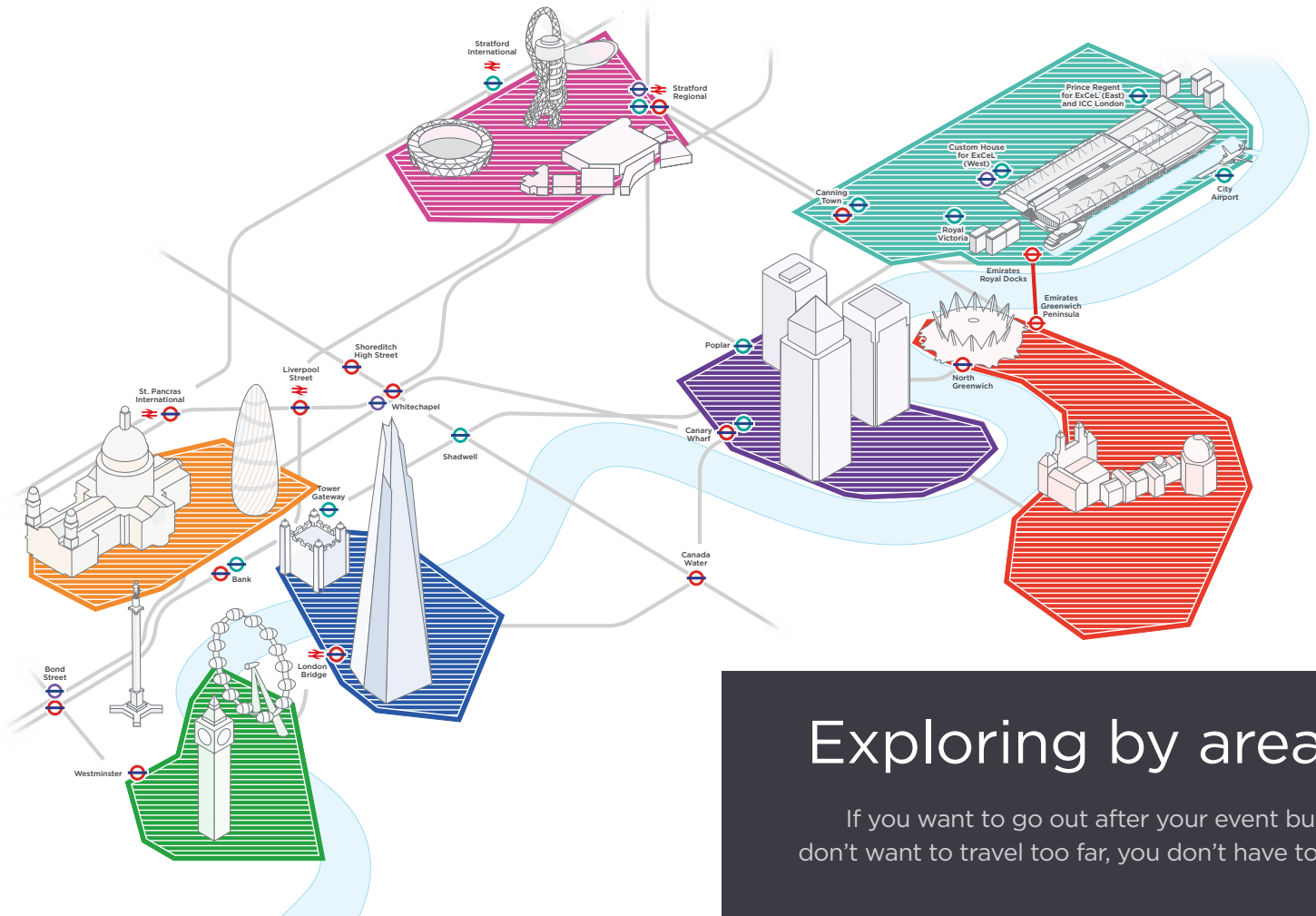
Wilton's Music Hall  
 Maltby Street

## Activities

White Water Rafting  
 smallcarBIGCITY  
 Shoreditch Street Art Tours  
 Ride the Olympic Velodrome  
 Locked In A Room  
 Flight Club

## World class attractions

Buckingham Palace  
 Coca-Cola London Eye  
 Trafalgar Square  
 St.Pauls Cathedral  
 Westminster Abbey and Big Ben  
 HM Tower of London and Crown Jewels  
 Free museums



# Exploring by area

If you want to go out after your event but don't want to travel too far, you don't have to!

## Boisdale Canary Wharf



📍 Cabot Place, Canary Wharf, London E14 4QT

A lively restaurant serving traditional British cuisine, Boisdale also offers private dining for more intimate events. Under the guidance of Patron of Music, Jools Holland, the venue offers live jazz, blues & soul (and occasionally pop and reggae), alongside an extensive whisky selection, superb wine list and handmade cigar collection.

### ExCeL offer

Complimentary glass of Champagne at your table or a post meal whisky for guests quoting 'ExCeL VIP' when booking in advance.

\*At time of booking you will need to stipulate your drink of choice and all guests must have the same option.

### Reservations

+44 (0) 20 7715 5818

### Journey time from ExCeL

10 minutes

### Nearest tube/DLR

Canary Wharf

[www.boisdale.co.uk](http://www.boisdale.co.uk)

## Gaucha Canary Wharf



📍 29 Westferry Circus, Canary Riverside, London E14 8RR

Commanding spectacular views of the River Thames, Gaucha Canary Wharf brings a continental feel to London's financial centre. With authentic Argentinian cooking from the open kitchen, guests can enjoy a stylish and memorable evening. There is also a large terrace, where diners are treated to unbeatable sunsets – ideal for alfresco dining.

### ExCeL offer

20% discount on final F&B spend when quoting 'ExCeL London'\*

\*Depending on the day and on availability.

### Reservations

+44 (0) 20 8858 8449  
[canary@gauchorestaurants.com](mailto:canary@gauchorestaurants.com)

### Journey time from ExCeL

10 minutes

### Nearest tube/DLR

Canary Wharf

[www.gauchorestaurants.co.uk/restaurants/canary](http://www.gauchorestaurants.co.uk/restaurants/canary)

## Gaucha O2



📍 The O2 Arena, Unit 5 Peninsula Square, Greenwich, London SE10 0DX

Whilst the sunken seating area in the cocktail bar is the perfect setting for a drink after a busy day, Gaucha's three level restaurant offers authentic Argentinian food. Gaucha at The O2 can cater for groups of any size, and are able to organise a dinner and show experience in their exclusive VIP suite.

### ExCeL offer

20% discount on final  
F&B spend when quoting  
'ExCeL London'\*

\*depending on the day and on  
availability.

### Reservations

+44 (0) 20 8858 8449  
o2@gauchorestaurants.com

### Journey time from ExCeL

10 minutes

### Nearest tube

North Greenwich or  
Emirates Airline cable car  
direct from ExCeL to The O2

[www.gauchorestaurants.com/  
restaurants/o2](http://www.gauchorestaurants.com/restaurants/o2)

## Peninsula Restaurant



📍 InterContinental London – The O2, Greenwich Peninsula, SE10 0TW

The elegant Peninsula Restaurant offers an understated yet premium dining experience for guests keen to explore the rich tapestry of modern European cuisine. Head Chef, Thomas Lidakevicius' dishes reflect the changing seasons, using produce and textures inspired by it. A carefully selected wine list and dramatic views of Canary Wharf and the River Thames brilliantly complement the overall experience.

### ExCeL offer

Champagne on arrival and 20%  
discount on the groups' menu when  
you quote 'ExCeL London VIP' for  
any reservation over 9 people.

\*Subject to availability. Blackout  
dates apply. Offer cannot be used  
in conjunction with any other  
promotion. Maximum 6 guests per  
booking. Advance booking required.

### Reservations

+44 (0) 20 8463 6868  
peninsularestaurant@iclondon-  
theo2.com

### Journey time from ExCeL

10 minutes

### Nearest tube

North Greenwich  
or take Emirates Airline cable car  
direct from ExCeL to The O2

[www.iclondon-theo2.com/  
dining/peninsularestaurant](http://www.iclondon-theo2.com/dining/peninsularestaurant)



## Plateau



📍 4th Floor, Canada Place, London E14 5ER

Plateau sits atop Canada Place opposite One Canada Square tower in Canary Wharf offering captivating cityscape views. Opt for the elegant main restaurant or more informal bar and grill. Guests can enjoy the latest seasonal cocktails or relax on one of the two outdoor terraces.

### ExCeL offer

Complimentary welcome drink on arrival\*, an amuse bouche and a pre dessert. Book in advance and quote 'ExCeL VIP' when booking.

\*A house beer, glass of bubbles or soft drink.

### Reservations

+44 (0) 20 7715 7100  
plateaureservations@  
danddlondon.com

### Journey time from ExCeL

10 minutes

### Nearest tube/DLR

Canary Wharf

[www.plateau-restaurant.co.uk](http://www.plateau-restaurant.co.uk)

## Le Pont de la Tour



📍 36D Shad Thames, London SE1 2YE

A luxurious riverside destination with iconic views, Le Pont de la Tour combines traditional yet innovative French cuisine, knowledgeable and friendly staff, thoughtful design that evokes the Parisian chic of the 1930s and stunning views of the City and Tower Bridge.

### ExCeL offer

Complimentary welcome drink on arrival\*, an amuse bouche and a pre dessert. Book in advance and quote 'ExCeL VIP' when booking.

\*A house beer, glass of bubbles or soft drink.

### Reservations

+44 (0) 20 7403 8403  
lepontres@danddlondon.com

### Journey time from ExCeL

20 minutes

### Nearest DLR

Tower Gateway

[www.lepontdelatour.co.uk](http://www.lepontdelatour.co.uk)

## The Grapes



📍 76 Narrow Street, London E14 8BP

This tavern has stood on the same ground for 500 years. It was frequented by Samuel Pepys and Charles Dickens and is said to be the inspiration for the opening of the Dickens classic 'Our Mutual Friend'. If you're looking for something quick and tasty like a pie and a pint, you'll find tempting pub grub in the downstairs bar.

---

### Reservations

+44 (0) 20 7987 4396

### Journey time from ExCeL

15 minutes

### Nearest DLR

Limehouse

[www.thegrapes.co.uk](http://www.thegrapes.co.uk)

## The Gun



📍 27 Coldharbour, London E14 9NS

The Gun is a stunning grade II listed, early 19th century public house located on the banks of the Thames. Restored to its former glory, this historic venue boasts two bars, a restaurant, three private dining rooms, two snugs and an elegant all-weather riverside terrace.

---

### ExCeL offer

Complimentary glass of Prosecco or pint of beer on arrival for bookings in the restaurant (max 8 guests per reservation). Book in advance and quote 'ExCeL London'.

### Reservations

+44 (0) 20 7519 0075  
[gun.events@fullers.co.uk](mailto:gun.events@fullers.co.uk)

### Journey time from ExCeL

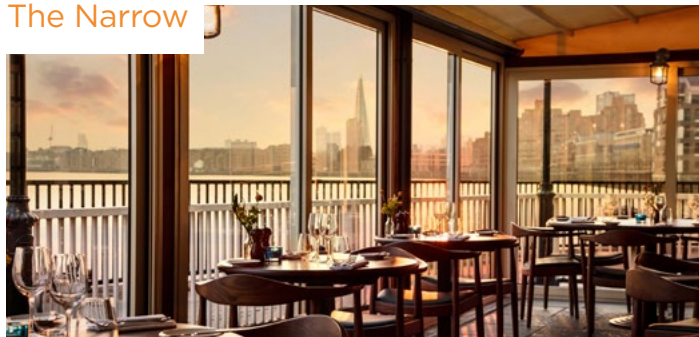
15 minutes

### Nearest DLR

Blackwall/South Quay

[www.thegundocklands.com](http://www.thegundocklands.com)

## The Narrow



📍 44 Narrow Street, London E14 8DP

With panoramic views of the river Thames, Gordon Ramsay's The Narrow serves simple but elegant food sourced from the best British and European produce. Classic cocktails, wine and beers can be enjoyed in the bar or conservatory — ideal for post-event drinks.

---

### ExCeL offer

25% off the bill, book through the restaurant and quote 'ExCeL at the Narrow'  
\*depending on the day and on availability.  
For 2 - 20 people.

### Reservations

+44 (0) 20 7592 7950  
[thenarrow@gordonramsay.com](mailto:thenarrow@gordonramsay.com)

### Journey time from ExCeL

15 minutes

### Nearest DLR

Limehouse

[www.thenarrow.co.uk](http://www.thenarrow.co.uk)

## The Ledger Building



📍 4 Hertsmere Road, West India Quay, Docklands, London E14 4AL

If you want a traditional pub in the heart of Canary Wharf, The Ledger Building is the place for you. This pub stands at the northwest corner of the former Import Dock. It takes its name from the building's original use, to house the ledgers of the West India Docks.

---

### Reservations

+44 (0) 20 7536 7770

### Journey time from ExCeL

15 minutes

### Nearest DLR

West India Quay

[www.jdwetherspoon.com](http://www.jdwetherspoon.com)



## Browns



📍 West India Quay, Unit A Hertsmere Rd, Canary Wharf, London E14 4AY

Browns Brasserie & Bar West India Quay is located in the heart of London's Docklands, with an impressive combination of history and modern architecture. Part of an old sugar warehouse built in the early 19th century – the restaurant is full of character, warmth and charm.

### ExCeL offer

20% discount on the total bill when you dine with us.

T's & C's: Dine from the a la carte menu (at least one main course), and the discount would not be valid with set menus or any other offer. Maximum 10 people. Quote 'ExCeL London' when booking.

### Reservations

[www.browns-restaurants.co.uk](http://www.browns-restaurants.co.uk)

### Journey time from ExCeL

15 minutes

### Nearest DLR

West India Quay

[www.browns-restaurants.co.uk](http://www.browns-restaurants.co.uk)

## Hazev



📍 Discovery Dock, Apartments West, 2 South Quay Square, London E14 9RT

Enjoy a blend of modern and classic Eastern Mediterranean cuisine of Anatolia in the heart of the Docklands at Canary Wharf. Spectacularly sat by the river, imagine yourself on the Bosphorus while sampling a vast array of dishes all specially prepared by this restaurant's expert Turkish chefs.

### ExCeL offer

5% discount on food and drink. Book in advance and quote 'ExCeL London' when ordering.

### Reservations

[www.hazev.com/make-a-reservation](http://www.hazev.com/make-a-reservation)

### Journey time from ExCeL

20 minutes

### Nearest tube/DLR

Canary Wharf

[www.hazev.com](http://www.hazev.com)

## Ibérica



📍 12 Cabot Square, Canary Wharf, London E14 4QQ

Located in Cabot Square, this restaurant and bar in Canary Wharf is the perfect place for after work drinks and tapas, celebrating the beautiful food, wine and culture of contemporary Spain.

### ExCeL offer

Complimentary glass of Cava (Spanish sparkling wine) upon arrival, complimentary desserts and hot drinks when booking any time for a table up to 10 people.

T&C: Book in advance and quote 'ExCeL VIP' to redeem the offer.

### Reservations

+44 (0) 20 7636 8650

### Journey time from ExCeL

20 minutes

### Nearest tube/DLR

Canary Wharf

[www.ibericarestaurants.com/  
restaurants/iberica-canary-wharf](http://www.ibericarestaurants.com/restaurants/iberica-canary-wharf)

## The Breakfast Club



📍 Unit CR30, Level Zero, 1 Crossrail Place, Canary Wharf, London E14 5AR

The giant disco ball hanging proudly in the entrance is a giveaway that this is a party venue – not one just for a fabulous all day breakfast. Having played host in the past, to legendary 90's bands such as the Vengaboys - this is a venue where you can whip off your ties, ditch the heels & let your hair down. Don't forget your appointment with the Dr. at their little secrets bar, Dr Kluger's Olde Towne Tavern.

### ExCeL offer

Two Aperol Alps for £10, a bucket of five beers for £18 at Dr Kluger's Bar, and £6 for all 'Dirty Regulars'. Offer valid Monday - Saturday from 4pm. Quote 'ExCeL London' in order to redeem the offer.

### Reservations

+44 (0) 20 7871 9986

### Journey time from ExCeL

10 minutes

### Nearest tube/DLR

Canary Wharf

[www.thebreakfastclubcafes.com](http://www.thebreakfastclubcafes.com)

## Chai Ki



📍 Mall Level - 1, Crossrail Place, Canary Wharf, London E14 5AR

Chai Ki is situated in Crossrail Place, Canary Wharf. A versatile venue, open for breakfast, weekend brunch, lunch, drinks and dinner. The restaurant is divided into two distinct areas, the Toddy Shop Bar serving an all-day menu offering bar plates and soul food to share. The second area is the Restaurant Dining Room, providing refined, modern experimental food in a contemporary setting.

### ExCeL offer

Complimentary signature Bellini or House-Infused Pilsner when dining in the Toddy Shop or Restaurant.

### Reservations

+44 (0) 20 7516 0444

### Journey time from ExCeL

15 minutes

### Nearest tube/DLR

Canary Wharf

[www.chai-ki.com](http://www.chai-ki.com)

## Davy's Wine Bar



📍 31-35 Fishermans Walk, Canary Wharf, London E14 4DH

One of the oldest wine bars in Canary Wharf, Davy's is located on Fisherman's Walk, overlooking the water of West India Quay. During the day, the contemporary brasserie is the ideal place to sample delicious traditional British favourites and seasonal dishes. At night, Davy's is a vibrant wine, ale and port house. With it's four separate areas, two private rooms and huge outside area, Davy's is a fantastic venue for any event, party or private dining.

### ExCeL offer

A complimentary glass of Prosecco on arrival for lunch or dinner. Quote 'ExCeL London' upon arrival.

### Reservations

+44 (0) 20 7363 6633

### Journey time from ExCeL

10 minutes

### Nearest tube/DLR

Canary Wharf

[www.davy.co.uk](http://www.davy.co.uk)

## Giant Robot



📍 Garden Level, Crossrail Place, Canary Wharf, London E14 5AR

An epic eating and drinking rooftop in the heart of Canary Wharf. Sitting at the east end of London's biggest roof garden, the indoor venue is complete with four sensational street food traders, three brilliant bars, floor-to-ceiling windows with panoramic views and a huge, wraparound terrace for outdoor sunshine feasting in the summer months.

### Reservations

+44 (0) 20 7719 1325  
[giantrobot@londonunion.com](mailto:giantrobot@londonunion.com)

### Journey time from ExCeL

10 minutes

### Nearest tube/DLR

Canary Wharf

[www.streetfeast.com/visit-us/giant-robot](http://www.streetfeast.com/visit-us/giant-robot)

## Pizza Pilgrims



📍 12 Hertsmere Road, London E14 4AE

Dubbed as the 'Pizza Playground', the retro basement, which includes a giant foosball table, Nintendo gaming area with MarioKart, Just Dance, Karaoke as well as a vintage pinball machine provides great entertainment for all of your guests to enjoy.

### ExCeL offer

No room hire or minimum spend when booking an event space. Quote 'ExCeL London After hours to redeem discount'.

T&C: Parties over 40people (below this number of people room hire will be waived but a reduced minimum spend will apply).

### Reservations

+44 (0) 20 3019 8020  
[events@pizzapilgrims.co.uk](mailto:events@pizzapilgrims.co.uk)

### Journey time from ExCeL

10 minutes

### Nearest tube/DLR

Canary Wharf

[www.pizzapilgrims.co.uk](http://www.pizzapilgrims.co.uk)



## The Sipping Room



📍 West India Quay, 16 Hertsmere Rd, Canary Wharf, London E14 4AX

Retreat from the world while you enjoy our unrivaled service in the most welcoming environment. Stylish outdoor terrace provides the perfect alfresco respite throughout the seasons. From a stylish outdoor terrace overlooking the docks to our two cosy floors in a grade II listed building, The Sipping Room offers a variety of spaces that can be hired out as a whole or separated for smaller events.

### ExCeL offer

For parties of 20 or more will be offered 10% off the final bill. This offer is for bookings only. The booking type must be either a drinks, lunch or dinner booking.

Venue may require a pre-order to honour booking. The discount will be applied only once to the booking.

### Reservations

+44 (0) 20 3907 0320

### Journey time from ExCeL

10 minutes

### Nearest DLR

West India Quay

[www.drakeandmorgan.co.uk](http://www.drakeandmorgan.co.uk)

## Cantina del Ponte



📍 36c Shad Thames, London, SE1 2YE

A traditional Italian trattoria by the river Thames, offering a warm welcome; Cantina is the perfect spot for a quick bite of lunch or relaxed dinner. The interior of the restaurant is just as alluring as the setting: a mural of an Italian marketplace runs the length of the dining room while terracotta floor tiles and black and white 'metro' wall tiles give the place a cosmopolitan feel. A real continental experience in London Bridge.

### ExCeL offer

Enjoy a complimentary welcome drink on arrival\*, a delicious amuse bouche and a pre dessert. Quote 'ExCeL VIP' when making your reservation.

T&C: Reservation must be made prior to arriving at the restaurant and is subject to availability for up to six guests, when ordering from the à la carte menu. These deals are not valid on Valentine's Day, Mother's Day, Father's Day, all Bank Holidays, Christmas Day, and New Year's Eve. Above offers not available in conjunction with any other offer.

### Reservations

+44 (0) 20 7403 5403

### Journey time from ExCeL

30 minutes

### Nearest DLR

Tower Gateway

[www.cantinadelponte.co.uk](http://www.cantinadelponte.co.uk)



## Backyard Comedy Club



📍 231 Cambridge, Heath Road, Bethnal Green, London E2 0EL

A major part of the social scene in East London, Backyard Comedy Club have a reputation for great laughs and good value. In addition to stand-up comedy, they also host many other events such as variety shows, cabaret, swing dancing and charity events. A great way to spend your evening relaxing and sharing some laughs with fellow colleagues.

---

### ExCeL offer

10% discount on group booking; pre-book and quote 'ExCeL London'.

### Reservations

+44 (0) 20 7729 8424  
[info@backyardcomedyclub.co.uk](mailto:info@backyardcomedyclub.co.uk)

### Journey time from ExCeL

35 minutes

### Nearest tube/DLR

Bethnal Green

[www.backyardcomedyclub.co.uk](http://www.backyardcomedyclub.co.uk)

## Bateaux London



📍 Embankment Pier, Victoria, Embankment, London WC2N 6NU

See London's best sights on the river without even leaving your seat. Bateaux London offers a Thames dining cruise experience ideal for anyone who wants to enjoy the Capital at night. On a two-and-three-quarter hour dinner cruise guests can expect a welcome drink, four - five course menu and live entertainment playing throughout.

---

### ExCeL offer

15% off dining cruises.  
Book in advance and quote 'ExCeL London.' Please note offer is on an introductory basis and is subject to availability.

### Reservations

+44 (0) 20 7695 1809  
[sales@bateauxlondon.com](mailto:sales@bateauxlondon.com)

### Journey time from ExCeL

30 minutes

### Nearest tube

Embankment

[www.bateauxlondon.com](http://www.bateauxlondon.com)

## Everyman Cinema



📍 Crossrail Place Level - 2, Canary Wharf, London E14 5AR

Everyman Canary Wharf is situated in Crossrail Place, featuring three screens and a capacious, stylish statement bar. A unique experience, Everyman's aim is to offer individuality with its trademark seating, outstanding customer service and delicious food. The broad and exciting programme combine carefully chosen new releases alongside a curated film schedule and an array of exclusive live events.

### ExCeL offer

Enjoy 2 for 1 pizzas on a Monday (excluding Bank Holidays and 28th December).

### Reservations

+44 (0) 7711 596 945  
ammie.stowell@everymangroup.com

### Journey time from ExCeL

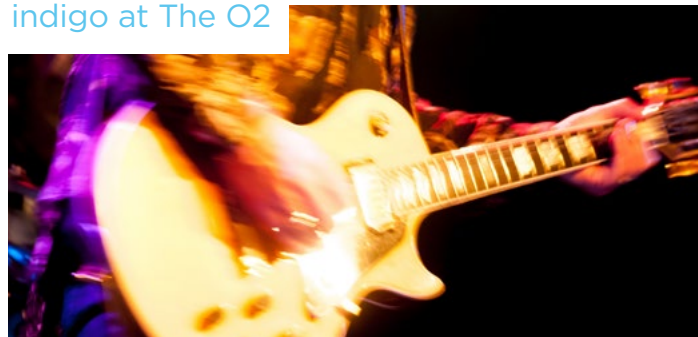
5 minutes

### Nearest tube/DLR

Canary Wharf

[www.everymancinema.com/  
canary-wharf](http://www.everymancinema.com/canary-wharf)

## indigo at The O2



📍 The O2, Peninsula Square, Greenwich, London SE10 0DX

If you're looking to host a great night out with a variety of choice, then look no further than indigo at The O2. Also known as The O2's little sister, indigo at The O2 offers a whole host of entertainment from live music events to stand-up comedy and after parties.

### Reservations

+44 (0) 20 8463 2700  
bookings@indigoattheo2.co.uk

### Journey time from ExCeL

10 minutes

### Nearest tube

North Greenwich  
or take cable car direct from  
ExCeL to The O2

[www.theo2.co.uk/do-more-at-the-o2/indigo-at-the-o2](http://www.theo2.co.uk/do-more-at-the-o2/indigo-at-the-o2)

## Encore



📍 2nd Floor, Harling House, 47-51 Great Suffolk St, London, SE1 0BS

Book London theatre tickets, for a variety of shows, through our partner, Encore. Visit [excellondon.entstix.com](http://excellondon.entstix.com) to take advantage of exclusive ticket offers and pre and post theatre dining packages, as well as tickets for major attractions.

---

### Reservations

+44 (0) 20 7400 1255  
[customerservices@encoretickets.co.uk](mailto:customerservices@encoretickets.co.uk)

**Journey time from ExCeL**  
20 minutes

### Nearest tube/DLR

Southwark

[excellondon.entstix.com](http://excellondon.entstix.com)

## Holy Smoke - Behind the scenes at H. Forman & Son



📍 Stour Road, London E3 2NT

There's no smoke without fire. Except when friction burning oak logs to create the perfect amount of smoke required for the delicate London Cure. Discover this and more trade secrets when you step behind the scenes at Forman's smokehouse in London. For over a century H. Forman & Son has been producing world class London Cure Smoked Salmon in the East End of London. Remaining faithful to principles established in 1905 Lance Forman & his team of artisans are upholding traditional values and skills that would otherwise have died out long ago.

---

### ExCeL offer

Free pack of smoked salmon for all guests who mention ExCeL when booking their tour.

\*Available Monday - Friday, minimum 2 guests, maximum 6 guests.

### Reservations

+44 (0) 20 8525 2399  
[claire@formans.co.uk](mailto:claire@formans.co.uk)

**Journey time from ExCeL**  
20 minutes

**Nearest tube**  
Hackney Wick

[www.formans.co.uk](http://www.formans.co.uk)

## East London Liquor Company



📍 Bow Wharf, 221 Grove Road, London, E3 5SN

Located in the heart of the Capital's old spirits district, the East London Liquor Company is an independent British distillery producing exceptional and innovative spirits, and is the first whisky, gin and vodka distillery in East London for over 110 years. If you're looking for a distillery tour or spirits tasting, East London Liquor Company offers a range of weekly tour and tasting experiences.

---

### Reservations

+44 (0) 20 3011 3119

### Journey time from ExCeL

25 minutes

### Nearest tube/DLR

Mile End

[www.eastlondonliquorcompany.com](http://www.eastlondonliquorcompany.com)

## City of London Distillery



📍 22-24 Bride Lane, London, EC4Y 8DT

The City of London Distillery opened on 20th December 2012 and brought gin production back to the area for the first time in almost 200 years. The upmarket cocktail bar offers a range of drinks and specialises in the 8 award winning gins that are produced by the distillery. Guided tour of the distillery is the ultimate experience for all gin lovers. The tour takes approximately 1 hour 15 minutes and is followed by a 4-flight gin tasting and a welcome G&T.

---

### Reservations

+44 (0) 20 7936 3636

[bookings@indigoattheo2.co.uk](mailto:bookings@indigoattheo2.co.uk)

### Journey time from ExCeL

10 minutes

### Nearest tube

City Thameslink / Blackfriars /  
St. Pauls

[www.cityoflondondistillery.com](http://www.cityoflondondistillery.com)

## Wilton's Music Hall



📍 1 Grace's Alley, London E1 8JB

Situated in the heart of the East End, Wilton's is the world's oldest surviving Grand Music Hall. This lively yet hugely romantic setting encompasses a living theatre, concert hall and public bar with a diverse set of performances showcasing everything from opera to puppetry, cabaret to dance. Definitely one of London's best kept secrets.

---

### Reservations

+44 (0) 20 7702 2789

### Nearest DLR

Shadwell / Tower Gateway

### Journey time from ExCeL

20 minutes

[www.wiltons.org.uk](http://www.wiltons.org.uk)

## Maltby Street Market



📍 Ropewalk, Bermondsey, London SE1 3PA

Opened in 2010, Maltby Street market is a hidden gem for any foodies that wish to explore the gourmet goods of current times. The traders' stalls set up in railway arches are switched up regularly, so there is always something new to try. Our tip would be to make sure you start off with an empty stomach as there are plenty of tasty goods to sample en-route.

---

### Reservations

+44 (0) 20 7394 8061

### Nearest tube/DLR

Bermondsey

### Journey time from ExCeL

17 minutes

[www.maltby.st](http://www.maltby.st)



## White Water Rafting



📍 Lee Valley White Water Centre, Station Road,  
Waltham Cross, Hertfordshire, EN9 1AB

For unforgettable experience days, team-building activities and white-water action, Lee Valley White Water Centre is the place to be! Set in River Lee Country Park, this unique visitor destination in Hertfordshire is easily accessible from London and offers a range of water activities including white water rafting on the Olympic course to canoeing and kayaking on the lake and much more!

---

### Reservations

03000 030 616

whitewater@vibrantpartnerships.  
co.uk

### Nearest station

Waltham Cross/ Cheshunt

[www.gowhitewater.co.uk](http://www.gowhitewater.co.uk)

### Journey time from ExCeL

40 minutes

## smallcarBIGCITY



📍 8 Northumberland Avenue, London, WC2N 5BY

smallcarBIGCITY offer bespoke sightseeing experiences for distinguished travellers. They believe that visitors to London should feel like locals, so have restored a fleet of classic Mini Coopers and trained a team of passionate local guides to show you the capital through the eyes of a Londoner! Experiences range from 1-8 hrs for individuals or groups of 1-30 people.

---

### Reservations

+44 (0) 20 7839 6737

### Journey time from ExCeL

25 minutes

### Nearest tube

Charing Cross / Embankment

[www.smallcarbighcity.com](http://www.smallcarbighcity.com)

## Shoreditch Street Art Tours



📍 Shoreditch, Brick Lane, Old Street

Discover the best street art London has to offer in the heart of Shoreditch, gateway to London's East End. Shoreditch is home to a vibrant and colourful culture of street art, murals, cafes, bars, galleries, restaurants, fashion and markets. Street artists from London's East End and the UK as well as international artists from all over Europe and the rest of the world leave an ever-changing kaleidoscope of energy and creativity on the walls of Shoreditch.

---

### Reservations

+44 (0) 7834 088 533

[info@shoreditchstreetarttours.co.uk](mailto:info@shoreditchstreetarttours.co.uk)

### Journey time from ExCeL

25 minutes

### Nearest tube

Liverpool Street / Old Street

[www.shoreditchstreetarttours.co.uk](http://www.shoreditchstreetarttours.co.uk)

## Ride the Olympic Velodrome



📍 Lee Valley VeloPark, Abercrombie Road, Queen Elizabeth Olympic Park, E20 3AB

One action packed day experiencing the two London 2012 tracks at Lee Valley VeloPark. Get the chance to take part in a Track Taster session to learn the key techniques of riding our 250-metre velodrome before taking on the BMX track and all of its different features. At the end of the session you can relax in café which overlooks the velodrome and take in the excitement of the day.

---

### Reservations

+44 (0) 3000 030 613

### Journey time from ExCeL

18 minutes

### Nearest DLR

Stratford International

## Locked In A Room



📍 One Western Gateway, Royal Victoria Dock, London E16 1XL

Located alongside CentrEd at ExCeL, overlooking Royal Victoria Dock, Locked In A Room London is Europe's largest escape room with 13 themed rooms allowing up to 78 players to compete simultaneously. Your team has 60 minutes to escape a locked room by solving puzzles and discovering clues, with stunning props for a completely immersive effect.

### ExCeL offer

Enjoy 10% off by using the code 'EXCEL2018' when booking online.

### Reservations

+44 (0) 20 7476 5571

### Journey time from ExCeL

Based onsite

[www.lockedinaroom.co.uk](http://www.lockedinaroom.co.uk)

## Flight Club



📍 2A Worship Street, Finsbury, London, EC2A 2AH

Flight Club; the home of Social Darts. A social experience like no other, bringing groups of people together for unexpected, ridiculous joy! They've taken the traditional game of darts and supercharged it for the 21st century by developing a range of fast-paced, instant scoring multi-player games.

The décor combines the heritage of darts; the warmth and nostalgia of the pub with the fun and excitement of the fairground. From bespoke lighting which dances in time to the music, custom-made stained-glass windows, to fairground horses; you'll know when you've walked into a Flight Club.

It's not just about darts, it's all about being social! Whether you're looking for a place for lunch, brunch, a cocktail-fueled catch-up or a well-deserved team social; there's a distinct range of signature cocktails and delicious sharing plates and pizzas to choose from.

### Reservations

+44 (0) 20 3019 3093

### Journey time from ExCeL

40 minutes

### Nearest tube

Old Street

[flightclubdarts.com/london](http://flightclubdarts.com/london)

## World class attractions

### Buckingham Palace

[www.rct.uk](http://www.rct.uk)

📍 Westminster, London SW1A 1AA

Nearest tube Green Park

---

### Coca-Cola London Eye

[www.londoneye.com](http://www.londoneye.com)

📍 Lambeth, London SE1 7PB

Nearest tube Waterloo

---

### Trafalgar Square

[www.london.gov.uk](http://www.london.gov.uk)

📍 Charing Cross, London WC2N 5DN

Nearest tube Charing Cross

---

### St.Pauls Cathedral

[www.stpauls.co.uk](http://www.stpauls.co.uk)

📍 St. Paul's Churchyard, London EC4M 8AD

Nearest tube St.Paul's

---

### Westminster Abbey and Big Ben

[www.westminster-abbey.org](http://www.westminster-abbey.org)

📍 20 Deans Yd, Westminster, London SW1P 3PA

Nearest tube Westminster

---

### HM Tower of London and Crown Jewels

[www.hrp.org.uk/TowerOfLondon](http://www.hrp.org.uk/TowerOfLondon)

📍 St Katharine's & Wapping, London EC3N 4AB

Nearest DLR Tower Gateway





## Free museums

### British Museum

[www.britishmuseum.org](http://www.britishmuseum.org)

📍 Great Russell St, Bloomsbury, London WC1B 3DG

Nearest tube Tottenham Court Road

---

### National Gallery

[www.nationalgallery.org.uk](http://www.nationalgallery.org.uk)

📍 Trafalgar Square, Charing Cross, London WC2N 5DN

Nearest tube Charing Cross

---

### Natural History Museum

[www.nhm.ac.uk](http://www.nhm.ac.uk)

📍 Cromwell Rd, South Kensington, London SW7 5BD

Nearest tube South Kensington

---

### Science Museum

[www.sciencemuseum.org.uk](http://www.sciencemuseum.org.uk)

📍 Exhibition Rd, South Kensington, London SW7 2DD

Nearest tube South Kensington

---

### Victoria & Albert Museum

[www.vam.ac.uk](http://www.vam.ac.uk)

📍 Cromwell Rd, Knightsbridge, London SW7 2RL

Nearest tube South Kensington

