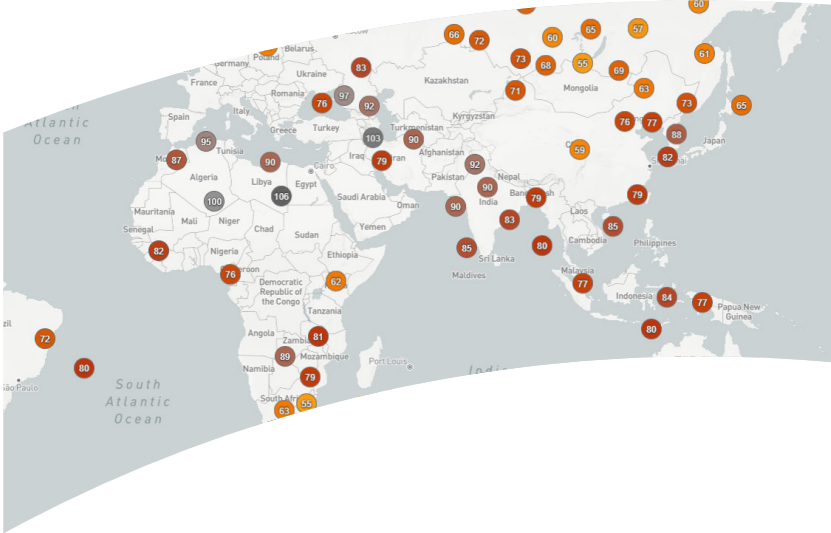




# WMO Information System (WIS)

## WIS 2.0 Box

## Services



### WIS 2.0 and Synoptic Data's Role

WIS 2.0 is an information system for the World Meteorological Organization (WMO), designed to easily share global weather data. It supports the WMO Unified Data policy, the Global Basic Observing Network (GBON), and makes international, national, regional, and local data sharing simple, effective, and inexpensive.

Synoptic Data was the first company to partner with the WMO as a Global Implementation Partner for WIS 2.0. Synoptic has continued to lead the effort by implementing and maintaining a WIS 2.0 Box and WIS 2.0 Box as a Service in the cloud, while also managing and operating the United States Global Cache in partnership with NOAA, Amazon Web Services, and the United Kingdom Met Office. Additionally, Synoptic has played a key role in UI development, collaborating with WMO developers to simplify data publication for National Meteorological and Hydrological

### FEATURES

- Full support and optimization of your WIS 2.0 implementation.
- Ongoing monitoring and maintenance.
- Easy data exchange/sharing with Member Countries.
- Training on implementation & architecture.
- Access real-time and historical, quality-controlled data.
- Data Viewer for visualizing all publicly available data.
- Dashboards and notifications tools.

Services (NMHSS).

Synoptic has already made several thousands of stations available on WIS 2.0 on behalf of NOAA, marking the largest data contribution to the platform to date.

### Experts in Weathertech

For over 20 years, Synoptic has provided secure, high-performance aggregation of surface-based weather observations in the cloud. With the successful implementation of a WIS 2.0 Box, our experienced team, boasting over 50 years of combined expertise in meteorology, software, and cloud computing, is ready to support your WIS 2.0 deployment. As a trusted partner in the industry, Synoptic promises swift and knowledgeable support throughout the process to ensure data is delivered quickly and accurately.

## Synoptic WIS 2.0 Solutions

Synoptic Data offers the following options for your WIS 2.0 implementation:

### Consultation

If you're ready to implement WIS 2.0 and seeking guidance, Synoptic offers consultation services to help you prepare. Our employees are experts in atmospheric science and data engineering and have assisted with WIS 2.0 development for the past year plus. We are able to provide guidance on:

- Weather stations, data logging, metadata
- Data quality and data availability
- Usage and interpretation of data
- Engineering for high volume, low latency weather data / observations
- Architecture and infrastructure best practices

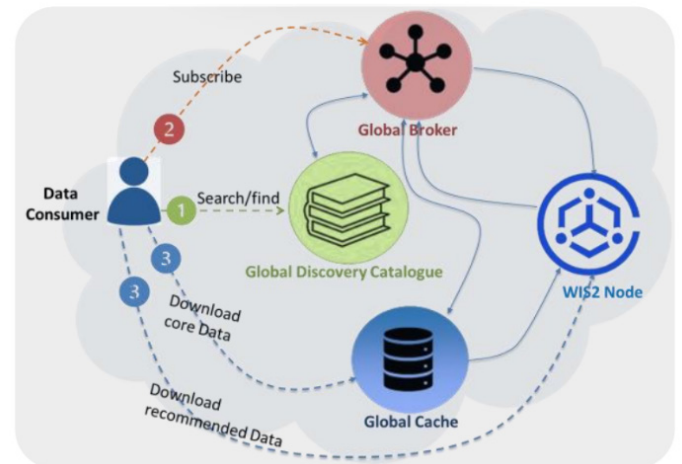
### WIS 2.0 Box

Synoptic will design, build, train your staff, and transfer a WIS 2.0 Box to your country. This provides you with everything you need to get started and gives you the freedom to move forward and manage your data sharing in-house.

### WIS 2.0 Box as a Service

If you don't have the resources and need a partner for WIS 2.0, we're here to help! For WIS 2.0 Box as a Service, we'll design, build, train, operate, and maintain your WIS 2.0 node in the cloud. This includes ongoing monitoring, maintenance, troubleshooting, and access control.

### WIS 2.0



Source: <https://community.wmo.int/en/activity-areas/wis/WIS2-overview>

### Ongoing Annual Support

We're here to help with ongoing support services with access to our team to deliver superior customer service. Annual contracts may include:

- 4-hour training sessions every 6 months virtually or one 1-week of training on-site
- Troubleshooting for functionality, technical platform issues, or delivery inconsistencies
- Ongoing performance tuning for your implementation
- A customized support plan with designated man hours



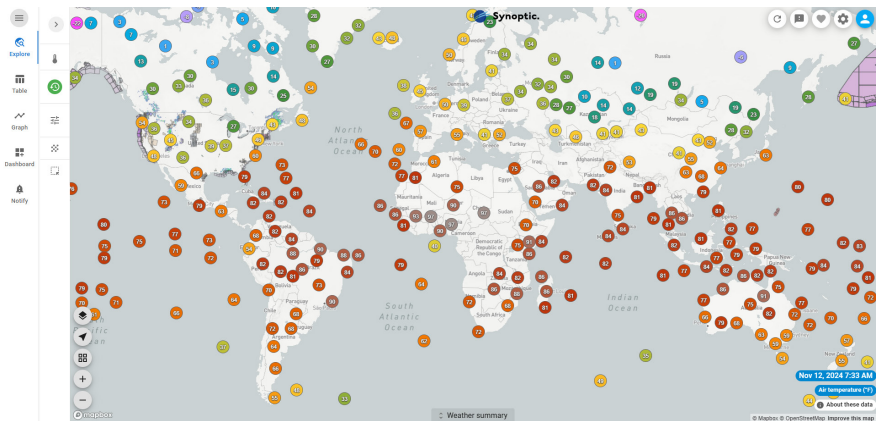
## Synoptic Data Viewer

Data discovery tools to access metadata, real-time observations, and monitor conditions closely.

### Visualize Global Data

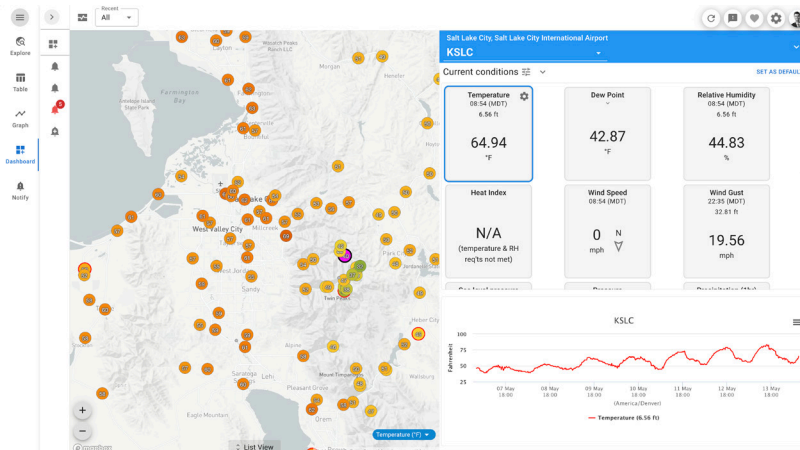
View global observations using the map feature, graph data to compare variables or stations, and review tabular data for viewing summary data.

- Access any publicly available station or network
- View detailed metadata information
- Download open datasets
- Data is quality-controlled for accurate reporting
- Save favorite views for quick access to important data.



### Dashboards & Notifications

Dashboards and Notifications tools allow you to customize views and focus on the areas you want to monitor. Track conditions and take proactive measures for safety and operations.



- Free access to these tools for WIS 2.0 Synoptic customers!
- Real-time dashboards for monitoring specific locations or parameters
- Real-time alerts using SMS and email
- Health monitoring of entire network

Contact us to get started using the Synoptic platform today!