

THE
ABLE[®]
LABEL



Autumn Leaf With A Hint Of Winter



'Many congratulations to Katie for this range of easy to get into clothes which are stylish and attractive and which I hope will become the mainstay of many wardrobes.'

Joanna Lumley, Supporter Of Our Autumn/Winter Collection

STYLISH DRESSING MADE EASIER

The Able Label is a new innovative range of beautiful clothes, designed to make life easier for women who like to look good but find high-street fashion a challenge to wear.

Encouraging independence

Before now, easier to dress clothing options by other companies have been limited to very basic and often frumpy styles but The Able Label has designed a range that will increase independence, without compromising the design and range of the clothes – appealing to a wider, stylish audience.

The Able Label makes dressing an easier, achievable task instead of an impossible chore. Easy touch Velcro fastenings instead of fiddly buttons help those with physical difficulties and the colour co-ordinated tape and Velcro fastenings inside, aid those who may have cognitive difficulties. There is also no overhead dressing.

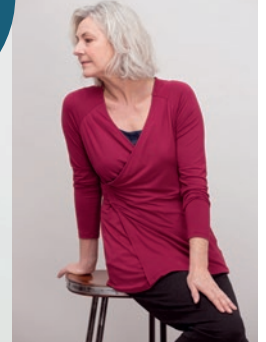
The range is the brainchild of Katie Ellis, a former fashion buyer, who was inspired to launch the line after witnessing her grandmother's struggle with a neurological condition. Drawing on this personal experience, Katie sought to address some of the day-to-day issues that can arise – independence, the desire to remain stylish and to maintain a sense of identity in spite of reduced dexterity and impaired mobility or cognitive skills.

The Able Label's Autumn/Winter 2018 Collection Autumn Leaf With A Hint Of Winter is available to buy from this September. With a rich fusion of berry tones ranging from redcurrant to plum purple, the collection has a real warmth to it that is broken up by wholesome teal and forest shades as well as icy light grey and off white.

Each style can be purchased in sizes 8–22 as standard with some available up to 26. Prices start from £25 and all clothing is eligible for VAT relief. The Able Label clothing range is available via the e-boutique www.theablelabel.com. Alternatively call 01622 744242 or email cservices@theablelabel.com to request a catalogue or for further information.



Click images to download



'Attention to detail is always at the heart of everything we do. We appreciate it is the little things in life that can make the biggest difference. The quality fabrics, discrete adaptive designs, innovative fastenings & hidden extras make dressing a lot easier for ladies with restricted movement or lack of finger dexterity perhaps through, arthritis, a stroke or even the general effects of ageing'

Katie Ellis, Founder

KEY PIECES



Marilyn Wool Blend Coat • Light Grey • S-XL • £130



Chantelle Blouse • Ivory • S-XL • £55



Paloma Luxury Wrap • Dragon Red • O/S • £59



Florence Wrap Skirt • Charcoal • S-XL • £55

CONTACTS

PRESS & PR

Jo Fry

jofrypr@gmail.com

07985 248481

Katie Ellis

press@theablelabel.com

07903 326408


ENQUIRIES

01622 744242

www.theablelabel.com

cservices@theablelabel.com

SOCIAL

 [YouTube](#)

 [Facebook](#)

 [Twitter](#)

 [Instagram](#)

IN THE PRESS

VOGUE

'As society changes, self-image for disabled people will get easier. Katie Ellis, formerly a fashion buyer for the White Stuff, has started The Able Label innovative, quality clothes for people with disability. Your body is beautiful it works'

Melanie Reid, Vogue

The Mail

ON SUNDAY

An innovative range of clothing designed for those who struggle to dress themselves.

Mail on Sunday

Irish Daily Mail

At last! Chic, stylish clothes for those who have dressing difficulties.

Daily Mail Ireland



Fully opening skirt - no bending down

