



AIRPORT

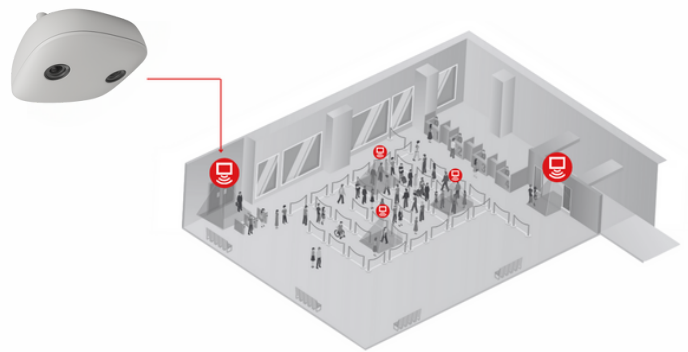
acorel
PEOPLE FLOW MANAGEMENT

QUEUE MANAGEMENT SYSTEM AND PREDICTIVE WAITING TIME



TECHNICAL SOLUTION

ACOREL provides high accuracy queue management and predictive waiting time solution through its innovative counting technology based on high accuracy **3D stereoscopic sensors**.



The information is processed to calculate :

- ✓ Predictive waiting time
- ✓ Realized waiting time
- ✓ Number of passengers in the queue
- ✓ Passenger input and output flows

The main advantages of this solution are :

- ✓ Large area coverage with very few sensors
- ✓ Adapted to both low and high ceilings
- ✓ Precise detection
- ✓ Easy installation and maintenance

ACOREL provides the complete architecture including the video processing unit and dedicated servers and web based application





APPLICATIONS

The Queue Management and Predictive Waiting Time System can be used in different places such as :



Check-in zones



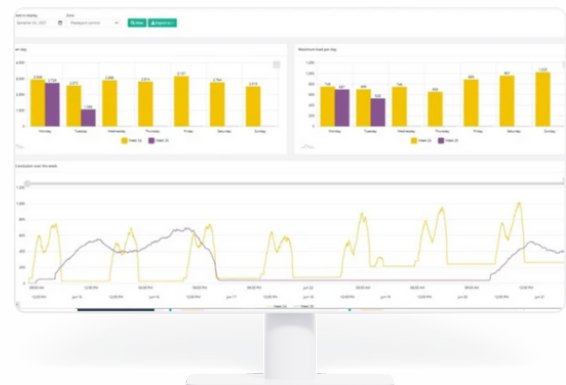
Safety screening areas



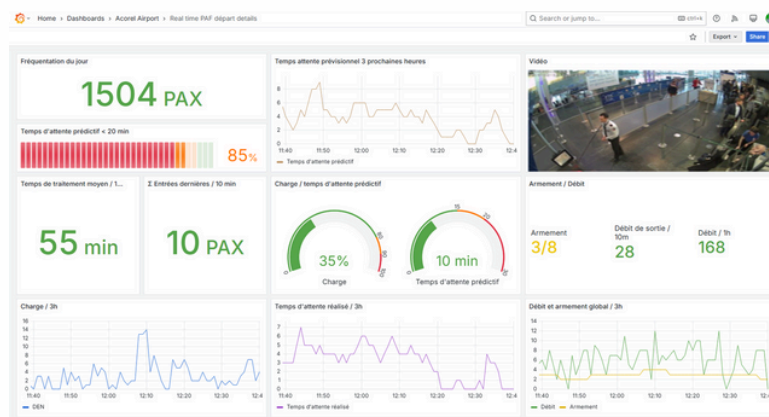
Passport control areas

IT BRINGS ACCURATE AND SIGNIFICANT INFORMATION TO ADDRESS :

- Staff management optimization
- Customer experience improvement
- Passenger information
- Efficient passenger flow



MAXIMUM LOAD PER DAY



DASHBOARD WITH LOAD PER ZONE / WAITING TIME

