



AIRPORT  
DUTY FREE

**acorel**  
PEOPLE FLOW MANAGEMENT

# AIRPORT INTELLIGENCE WITH COMPUTER VISION



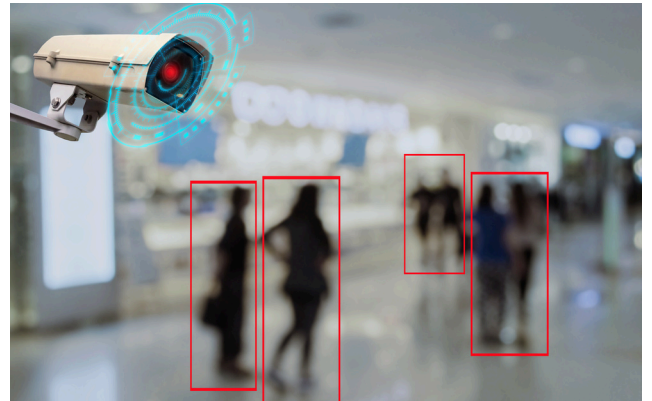
ACOREL provides **real-time PASSENGER** counting solution through its innovative **COMPUTER VISION** technology based on neural network and **CCTV cameras**.

## TECHNICAL SOLUTION



Taking advantage of **Artificial Intelligence** and **Machine Learning** technologies, we have developed specific algorithms to manage passenger flow.

A dedicated processing unit installed in the airport analyses the video images of the **CCTV cameras**, permits counting people and automatically calculates the percentage of occupancy of each part of the airport terminal.



### What are the main advantages of this solution ?

- ✓ Re-use of existing CCTV cameras
- ✓ Fully compliant with GDPR regulation
- ✓ Passenger flow improvement
- ✓ Accurate detection
- ✓ Quick installation and maintenance
- ✓ Cost effective

ACOREL provides the complete architecture including the video processing unit and dedicated servers and web based application

Technoparc Pôle 2000 - 3 rue Paul Langevin - 07130 Saint-Péray - France  
rail@acorel.com - Tel : +33 (0)4 75 40 59 79

[www.acorel.com](http://www.acorel.com)





## APPLICATIONS

- Real time information
- Passengers' experience optimization
- People safety
- Passengers and visitors' information
- Airport management optimization
- Better Cleaning management of toilet blocks

