



Spanning the World since 1919



BS EN ISO 9001:2015 • BS EN ISO 14001:2015 • BS OHSAS 18001:2007 • FULLY CE COMPLIANT FOR EXECUTION CLASSES 1 TO 4
JOHN REID & SONS (STRUCSTEEL) LTD trading as REIDsteel, REIDglazing & REIDmarine • Company Registration No: 617773

REIDsteel
JOHN REID & SONS (STRUCSTEEL) LTD





8403 • Executive class business jet hangar under construction, UK

COMPANY OVERVIEW

REIDsteel is a trading name of John Reid & Sons (Strucsteel) Ltd - Company Registration No: 617773.

The business was established in 1919 by Colonel John Reid and to date, remains family owned with a dynamic and progressive management team.

We design, fabricate and erect high quality steel framed structures including cladding, glazing and door systems. The company has strong financial foundations, an excellent credit rating and has earned a very good reputation within the industry.

We study your requirements, structural, functional and architectural: and propose efficient, safe, rapid and cost effective designs and methods to achieve your goals. We like to sit around the table with our clients and their advisors to achieve the optimum solutions.

One of our customers summed it up nicely . . .

“By placing multiple elements with REIDsteel, you mitigate many of the risks that are associated with multi-subcontractor management.”

Every project is unique, so if you do have a job that you would like to discuss, please get in touch with us for a chat. First point of contact is one of our experienced Sales Team professionals:

T: **+44 (0) 1202 483333**

E: **sales@reidsteel.co.uk**



The Company Process . . .

We design, detail, manufacture, deliver & build complete steel structures using a multiple discipline, in-house team to provide a 'one stop shop' service.



Fully CE Compliant
Execution Classes 1 to 4

BS EN ISO 9001:2015

BS EN ISO 14001:2015

BS OHSAS 18001:2007

Client and/or the Client's Team

On contact with REIDsteel the client is assigned one of our Bid Managers from our Sales Team.

REIDsteel Project Management

The assigned Bid Manager handles the job from initial discussions and quotation through to completion.

They communicate directly with the client and/or their team and liaise with all parties to keep everyone informed and updated.

Discusses with the client any changes to the works.

Health & Safety and the Environment

It is our Company Policy to put the Health & Safety of our staff and those affected by our processes first. We understand the value that safety brings to any successful project which is why we are OHSAS 18001 accredited.

We take seriously how our operations can impact upon the environment and take action whenever we are able to reduce any such impact in line with the high standards of ISO 14001.

Structural Engineering & Design

Full value engineering that creates the same structural strength and integrity from less steel. Our designers use detailed steel stress analysis and calculations that also account for wind, rainfall and seismic conditions at the project location.

By working directly with the drawing office, workshops & site staff from the outset, issues which could be costly or cause delays are avoided.



Steelwork & Cladding Detailing

The Drawing Office detail every connection of structural steel, cold formed members, cladding, flashings, vehicle doors, staircases, mezzanine floors etc while considering the forces applied and ensuring ease of fabrication and shipment.

They then produce clear, precise fabrication drawings for the workshops and general arrangement/detail drawings for site erection.

Windows, Doors, Screens & Louvres

The Glazing Division produce a comprehensive range of aluminium doors, windows, curtain walling, screens, louvres, solar shading etc and steel exit/personnel doors.

They work in tandem with the drawing office to provide seamless integration with the project's steelwork and cladding elements, ensuring total co-ordination from start to finish.

Contracts

To make things easy for our customers we can work to a simple contract format, or to construction industry standard forms of sub-contract, such as JCT, NEC or FIDIC.

Payment for export work is by Letter of Credit, which we can provide drafts for, or by stage payments during the progress of work for long term, well established, clients.

Procurement & Fabrication

Material is itemised, ordered and scheduled into the fabrication/shipping process.

Our workshops use the fabrication drawings generated by the drawing office to cut, weld, CNC drill, fold and paint the various component parts. With everyone based on the same site, any query can quickly and easily be discussed face to face with the draughtsman.

All our welders are qualified to BS EN 9606-1.

Shipping & Despatch

Everything required to erect a REIDsteel structure is labelled, crated and loaded into containers via a triple check process.

In addition to our UK market, we also ship Worldwide with full export documentation and since 1919 we have supplied structures to over 140 countries.

Whether for export or the UK, we can always phase deliveries to match site programme.

Erection

We employ a team of highly skilled steel erectors and advisors. We can either erect your steel structure for you, or supply a REIDsteel advisor to help your own team in the building process.

Our office and erection managers provide effective lines of communication internally and externally that helps to ensure a safe and speedy construction process.

Quality Control & After Care

We are fully CE compliant for Execution Classes 1 to 4 and have an ISO 9001 quality management system.

Quality is checked at all stages of the process.

We also have an excellent reputation for looking after clients beyond the completion of projects.

Quick Index

Aircraft hangars, hangar doors and hangar extensions	6, 7
Bridges (vehicle & pedestrian)	8, 9
Car parks	9
Church and community buildings	9
Environmental structures	10
Grandstands, stadia and sports/leisure buildings	10, 11
Housing, hospitals and schools	12
Hurricane and earthquake resistant buildings	12
Industrial and warehouse buildings	13
Office buildings, commercial buildings and retail superstores	14,15
Security gates, barriers and defensive structures	16
Windows, solar shading, doors, cladding, floors, roof edge protection, ventilation, cranes . . . quality components to complete your steel building	16 - 19



Aircraft hangars, hangar doors and hangar extensions

www.aircraft-hangars.com
www.hangardoors.com

Whether you need a clear span hangar to accommodate a fleet of the world's largest aircraft or a smaller hangar for more modest needs, it is something we can design, fabricate, ship and erect.

We build our own hangar doors as we believe there is a great advantage in having the hangar and doors from the same company.

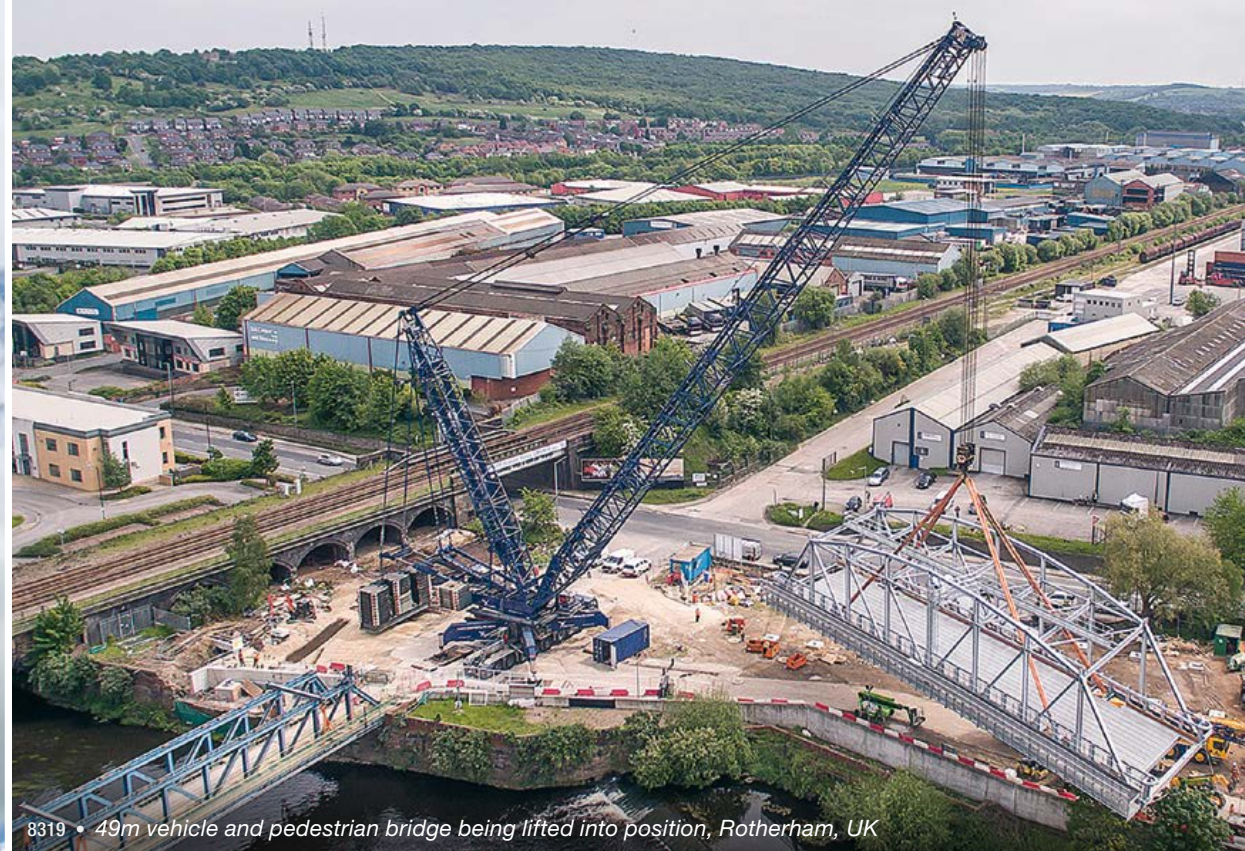
If you need to improve an existing hangar we can supply the new doors, but it may be worth considering a structurally independent extension incorporating the doors.

An extension can allow the hangar to house longer and taller aircraft than previously possible.



Above: Selection of REIDsteel hangars • Below: 140 tonne truss being lifted into position for a 100m span x 12m deep extension





Bridges (vehicle & pedestrian)

www.steel-bridges.com

Steel bridges designed, fabricated and shipped worldwide. Our bridge designs can range from utilitarian to architectural, with a range of decking/roadway options and can be hot dip galvanised or have a paint finish. A bridge can be given a more architectural look with a range of cladding or glazing options.

8347 • Pedestrian footbridge over six lane roadway





Car parks

www.multi-storey-car-parks.com

In satisfying all the requirements of good car park design, steel offers a very economical solution.

Ideal for long spans which enables column free parking spaces; it is quick to erect on site and is also comparatively lightweight reducing costly foundation requirements.



8182



8182



8445 • Cliff top bridge, Shanklin, Isle of Wight.

Church and community buildings

www.churchbuildings.co.uk

We can take on board all manner of church building projects offering full design and construction of the church structure itself, framed very economically and beautifully in structural steel.

5767 • St Luke's Church, US Virgin Isles



7984

We can also provide seating, raised altar, staging and other

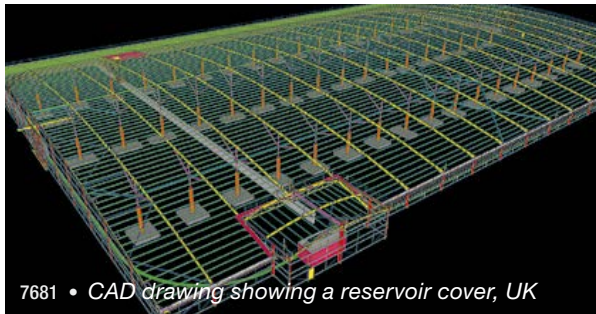
structural steel for church construction. When it's appropriate, our churches are hurricane or earthquake resistant.



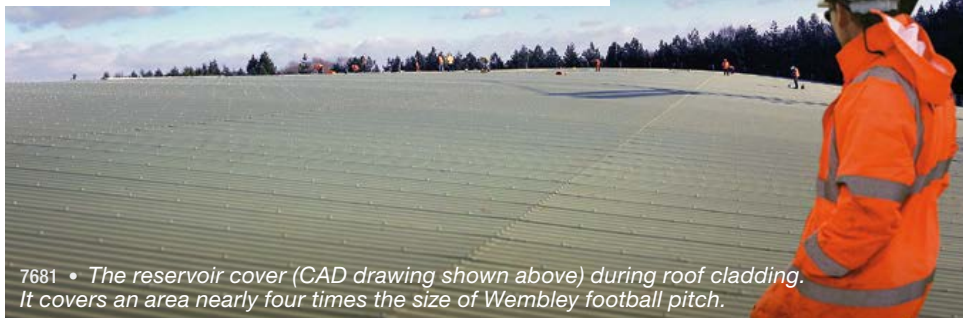
6775 • 40m span by 130m long recycling facility



6962/6963 • Water treatment works, Hornsey, UK



7681 • CAD drawing showing a reservoir cover, UK



7681 • The reservoir cover (CAD drawing shown above) during roof cladding. It covers an area nearly four times the size of Wembley football pitch.

Environmental structures

www.reidsteel.com

Our structures for the utilities and power industries are designed to provide tailored solutions that deliver exceptional results.

From protecting man-made reservoirs to delivering state-of-the-art waste handling, recycling facilities and biomass power stations, REIDsteel has the expertise to deliver from concept through to finished construction.



Above and below: 8332 • Belize Civic Centre Sports Complex - bleachers were designed to seat 4000 during sporting events and 5000 during other events.





Above: 8506 • Thruxton Racing Hospitality Centre, Hampshire, UK
 Below left: 8419 • Maidstone United football stadium, Kent, UK
 Below right: 6088 • REIDsteel stadium in use at a beach football competition



Grandstands, stadia and sports/leisure buildings

www.grandstands.net

Whether a practical, cost effective grandstand/sports stadium which fully complies with the latest safety and viewing standards or a sports hall for a single primary sport or a multi-sports complex, we can design and build a versatile steel framed superstructure to fit your needs and the needs of the sports to be played.

We also manufacture gangways, entrances & exits, suspended floors for offices, directors boxes and TV boxes for the stadium.



6692-94 • *Luxury Housing in Grenada*

Housing, hospitals and schools

www.reidsteel.com

Steel frames make building houses, apartment blocks, dormitories, hospitals and schools safe and economic.

Once the frame is in place, brickwork and/or cladding can quickly be added to the steel frame to produce the finished structure.

As part of the steel framing we can include staircases, handrails etc and supply windows, doors, curtain walling and solar shading from our glazing division.



Above: 7941
Steel framed affordable housing, Nigeria



8002-20 • *Hospital, Ghana*

6701-05 • *Dormitories, Mauritius*



6701-05 • *Hurricane resistant factory, Mauritius*

Hurricane and earthquake resistant buildings

www.reidsteel.com

We have great experience and knowledge in designing and erecting hurricane, earthquake and tsunami resistant structures including civil and military buildings for the world's most volatile climates.

We can also advise on the structural strengthening of existing buildings and bridges to better resist loads and natural disasters, or to make them life-safe by utilising best practice earthquake engineering techniques.



In Sept 2017, Hurricane Irma swept through the British Virgin Islands with winds reaching 215mph. This supermarket - photographed not long after the hurricane - and the other REIDsteel buildings on the islands, survived with minimal damage.



6366 • High bay automated storage & retrieval warehouse, Asfordby, UK



6699 • Tiko wheat mill, Madagascar



6630 • Spray Dryer Building, Yorkshire



7436 • High Bay Warehouse, Dominica



8402 • High Bay Workshop, Hawarden, UK - exterior, interior and construction photos

Industrial and warehouse buildings

www.reidsteel.com

REIDSteel offer bespoke design, construction and erection of specialist industrial steel buildings and warehouse buildings including full structural design and build covering all aspects of steelwork prefabrication.

We can include roller shutter or up and over panel doors, electro-mechanical hangar doors, ventilation, windows, staircases, gantries and overhead cranes.



We have specialist knowledge if the building needs to withstand high wind speeds, seismic loads or arctic snow loads.

Office buildings, commercial buildings and retail superstores

www.reidsteel.com

Steel is an ideal medium for offices and showrooms. With an in-house glazing department we can also supply the windows, curtain walling and solar shading that will make your building look attractive on the outside while creating a very good work environment on the inside.

We can supply staircases and decking for in situ concrete floors, and design the supporting structure for precast floors and lift shafts.

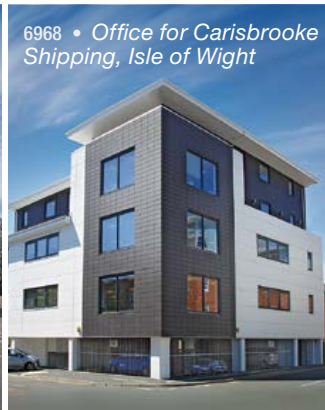
Retail superstores can benefit from our experience in producing clear span structures to reduce internal support columns and create large clear areas.



8545/6 • Car Dealership
nearing completion,
Midlands, UK,



7156 • Office Development, Plymouth, UK



6968 • Office for Carisbrooke
Shipping, Isle of Wight



5877 • B&Q Superstore, Jersey



8226 • Jersey Cargo Centre Offices, Jersey



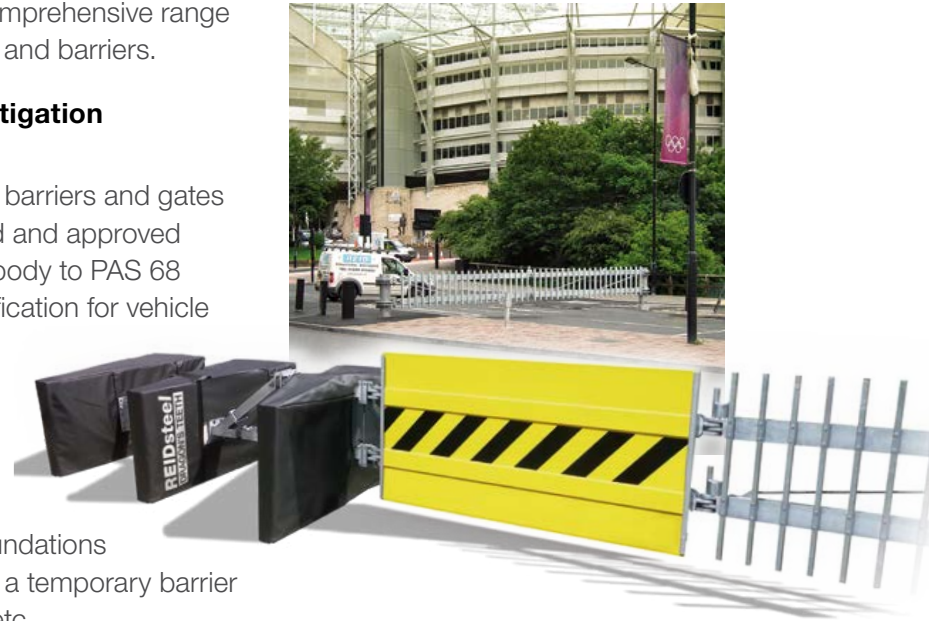
Security gates, barriers and defensive structures

REIDsteel have a comprehensive range of anti-vehicle gates and barriers.

Hostile Vehicle Mitigation (HVM) Barriers

A range of our HVM barriers and gates have been assessed and approved by an independent body to PAS 68 Performance Classification for vehicle impact test.

The gates can be fitted within fixed bollards or within Dragons's Teeth which require no foundations and can be used as a temporary barrier for sporting events etc.



REIDsteel Defence Structures supply blast resistant military buildings and other critical infrastructure, specialising in purpose made force protection against a variety of threats including bomb blast protection and explosion mitigation solutions.

We build, supply and erect a range of products including defensive barracks, headquarters buildings, hangars and hardened hangars, observation posts, road barriers, observation posts, dangerous goods stores, vehicle checkpoints and workshops.



7237 • Curtain Walling



8506 • Shop front system with high traffic glazed aluminium doors



6364 • Solar shading

Windows, solar shading, doors, cladding, floors, roof edge protection, ventilation, cranes . . .
quality components to complete your steel building

Windows and curtain walling

With an in-house glazing design and fabrication team using the latest in dedicated software, automated saws and CNC technology, we can supply a large range of products to suit the specific needs of each individual project. All our work carried out is to the latest EN standards and is CE compliant. We pride ourselves on the quality of our work.

Our window system combines flush vents and flat profiles to create a simple, streamlined appearance. Minimal sightline maximizes the viewing area without compromising the u-value.

We specialise in designing, manufacturing and installing curtain walling. The Sapa Elegance 52 system offers clients the ultimate in design and performance. We provide this system (and others) in a traditional style with aluminium caps or structurally glazed with a silicone finish externally.

We are also able to offer spider bolted glass facades where the glass is not set in frames, but held in place by point-fixings which creates the look of an all-glass facade.

Shop front system

Our thermally broken system incorporating commercial doors is ideal for single storey openings, but also suitable for glazed entrance screens and lobby areas. The benefit of this system over curtain walling is its ability to be installed like a standard window system so it can be fitted onto finished floors

Solar shading

We design, manufacture and install coated aluminium brise soleil in a vast range of colours, styles and blade sizes.

Solar shading can create a striking visual appearance to a building, but requires specific attention to finding the optimum balance between providing sufficient daylight (and maintaining the view to the outside) and efficient protection from the sun's rays (and privacy).

High traffic glazed aluminium doors

A great solution for commercial applications and we offer the option of door automation, in either sliding or swing motion.

Steel fire rated doors

Various levels of fire rating from 30 through to 120 minutes,

Glazed sliding vehicle doors

Large glazed sliding vehicle doors, as commonly seen on most car showrooms. These doors can be incorporated into curtain walling/shop front screens. *(Shown right)*

Revolving entrance doors.

Revolving doors as commonly seen on hotels and large apartment and office buildings. These doors can be incorporated into curtain walling/shop front screens. *(Shown right)*

Up & over sectional doors

Sturdier than the roller shutter doors, this door is insulated and sections can include vision panels. *(Shown right)*

Roller shutter doors

Suitable for workshops and stores, usually electrically operated but can be manually operated instead.

Sliding access doors

Bottom rolling or top hung doors to allow deliveries and/or vehicle access.

Hangar Doors

Bottom rolling doors can go to heights of more than 30m. Smaller hangar doors can be top hung instead if required.

Fabric lifting doors are more costly, but may be necessary if a full opening width is essential and there is no space for outriggers. They are also a good choice for paint shops.



Cladding, transluents, flashings and trim

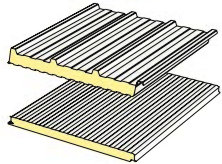
Cladding comes in a range of profiles, colours and finishes to suit the location, look and budget. Flashings and trims are produced with the same spec and gutter sizes are calculated to match the climate. Most styles of cladding have roof/wall transluents to match.



Trapezoidal single skin - Suitable for roofs & walls.
(Roof profile shown)



Typical insulated double skin - Outer and liner sheets separated by a thermal break spacer system and fibreglass insulation. Suitable for roofs & walls.
(Roof profile shown)



Composite sandwich panels - are suitable for roofs & walls. When used as wall panels they can be laid horizontally or vertically.

There are many profiles available: Profile suitable for roof or wall (top of the two) and a 'microrib' style wall profile (below).



Standing seam cladding - suitable for roofs with an especially low pitch.

Example sheeting properties	Pros	Cons
Aluzinc coated steel	Cheap and durable	No colour options
Polyester enamel coated galvanised steel	Economical, good colours	Not for harsh environments
Prisma coated galvanised steel	Good quality, durable	-
Ultra plastisol coated galvanised steel	Top quality, durable	-
Double sided Prisma or Plastisol coated steel	Best for a harsh climates	Expensive in comparison

Architectural facades

In addition to typical cladding, we can also design for the use of rain screens and other architectural cladding.



Examples of cladding types (clockwise from above):

- Microrib composite panel
- Trapezoidal
- Standing seam roof
- Rain screen





Mezzanines, decking and staircases

Steel floors, walkways, stairs and cat ladders, can easily be added to our steel framed buildings.

Floors can be finished in concrete, wood, non-skid Durbar plate or open mesh grating and can be designed for any load from light maintenance to heavy plant.

We can also design your building with the option to be able to add mezzanines at a later date.



7617 • Mezzanine floor ready to accept concrete.



7776 • Edge protection and walkable gutter



7160 • Ventilation via a large ridge vent



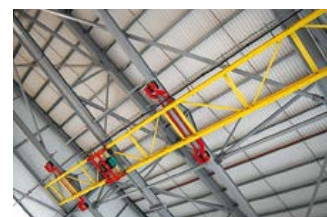
7391 • Roof cranes

Roof edge protection

We can supply our buildings with walkable gutters and roof edge protection for safe erection and maintenance.

Ventilation

We make louvres, ridge vents and powered ventilation.



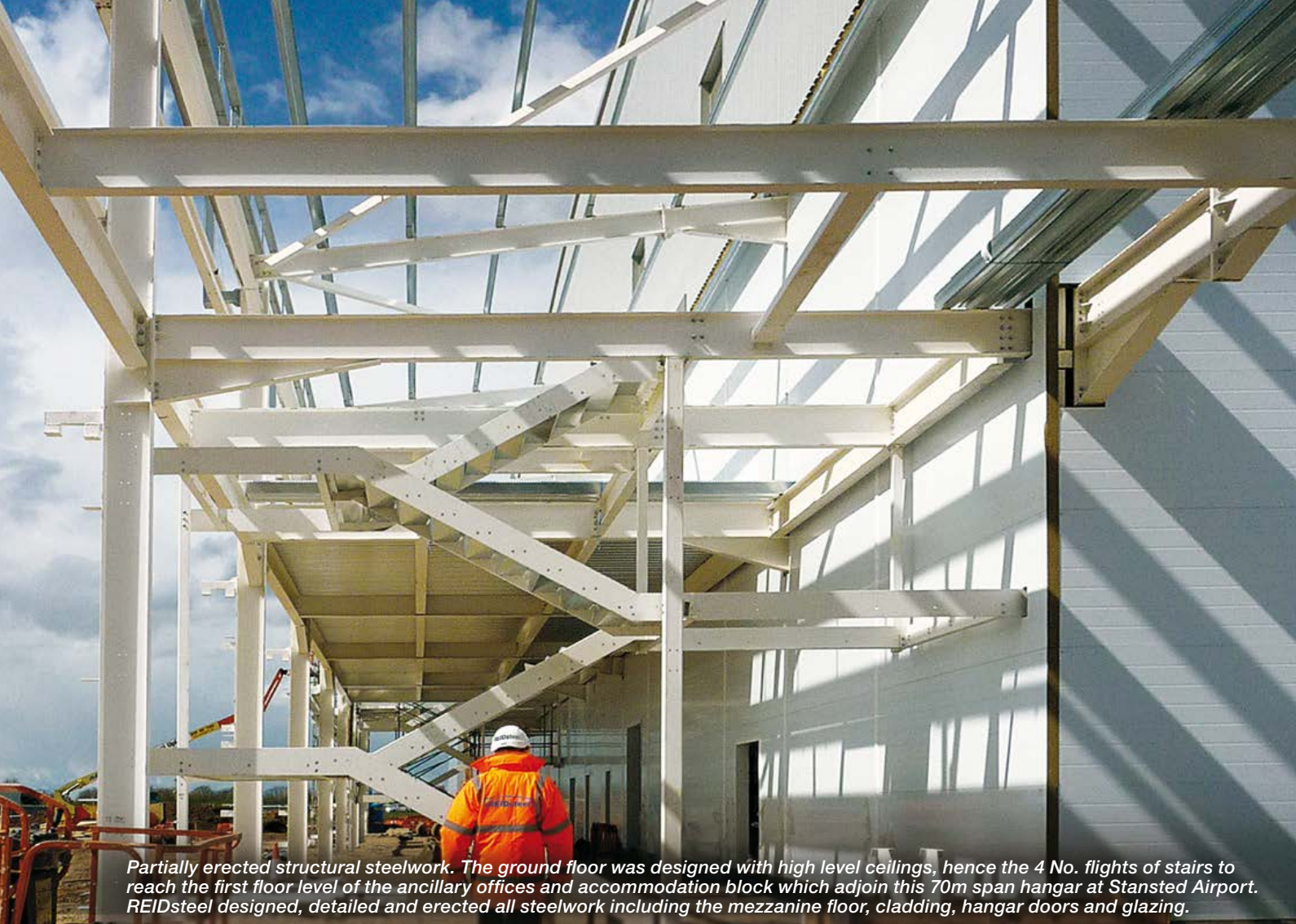
Cranes

Buildings can be designed to incorporate travelling overhead gantry cranes such as this 2T crane (inset) which runs the whole length of the hangar or the manufacturing facility which features four cranes for moving large steel plates and tubular sections (left).

Steel specification & grade

Our main steel is grade 50, yield stress 355 N/mm², ultimate stress > 500 N/mm² in British sections. Standard finish is shot blasted SA2.5 and primed with 75 microns of high build alkyd zinc phosphate paint, but for hostile environments we recommend hot dip galvanising to 85 microns.

Our zeta purlins and zed rails generally have a yield stress of 490N/mm² and are galvanised to G275.



Partially erected structural steelwork. The ground floor was designed with high level ceilings, hence the 4 No. flights of stairs to reach the first floor level of the ancillary offices and accommodation block which adjoin this 70m span hangar at Stansted Airport. REIDsteel designed, detailed and erected all steelwork including the mezzanine floor, cladding, hangar doors and glazing.

REIDsteel are experts in the design and build of the following:

Aircraft hangars, hangar doors and hangar extensions

Bridges

Car parks

Church and community buildings

Cranes

Environmental structures

Grandstands and stadia

Housing, hospitals and schools

Hurricane and earthquake resistant buildings

Industrial and warehouse buildings

Leisure and sports buildings

Office buildings, commercial buildings and retail superstores

Security gates, barriers and defensive structures

REIDsteel

JOHN REID & SONS (STRUCSTEEL) LTD

Strucsteel House, 3 Reid Street,
Christchurch, Dorset BH23 2BT England

Telephone: + 44 (0) 1202 48 33 33

Facsimile: + 44 (0) 1202 47 01 03

E-mail: sales@reidsteel.co.uk

Website: **REIDsteel.com**

REIDsteel is a trading name of
John Reid & Sons (Strucsteel) Ltd
Company Registration No: 617773

