

Why Adult Change Facilities?

An estimated 1.3 billion people—approximately 16% of the global population—currently live with significant disabilities.

This number is steadily rising, driven in part by an aging global population and the increasing prevalence of noncommunicable diseases. (Source: World Health Organization)

Despite growing awareness, a widespread misconception persists that standard accessible (or "handicap") toilets meet the needs of all people with disabilities. In reality, many individuals require more than just basic accessibility features. They may rely on assistive equipment such as:

- Height-adjustable changing tables
- Height-adjustable toilets and sinks
- Ceiling hoists for safe transfers to and from wheelchairs
- Space for caregivers or assistants

Without these accommodations, people are often left with no choice but to lie on restroom floors to be changed—an undignified and unsafe situation that reflects poorly on public infrastructure.

Installing fully equipped, inclusive changing facilities dramatically enhances the travel experience for people with disabilities and their companions. It fosters dignity, independence,

and safety—while also helping airports comply with modern accessibility standards and legal regulations.

Beyond compliance, investing in inclusive infrastructure demonstrates a genuine commitment to accessibility, strengthens an airport's public image, and can even offer a competitive advantage by attracting more airlines and passengers.

In October 2024, **Airports Council International (ACI)** released a new guide titled "Airports and Accessible Travel: A Practical Guide." This document sets forward practical measures to improve accessibility and inclusivity across the air travel sector, and among other important things, recommend at least two adult change facilities in each airport – one on a landside and one on an airside.

This Practical Guide by Pressalit is aligned with **EU standard EN17210 and CEN/TR 17621:2021 on Changing Places facilities**, and is informed by decades of experience in designing accessible restrooms. It represents a crucial step toward ensuring that air travel is accessible, inclusive, and respectful for all passengers—regardless of ability.

Scan the QR to watch Pressalit's height adjustable aids enhance comfort and accessibility at PIT



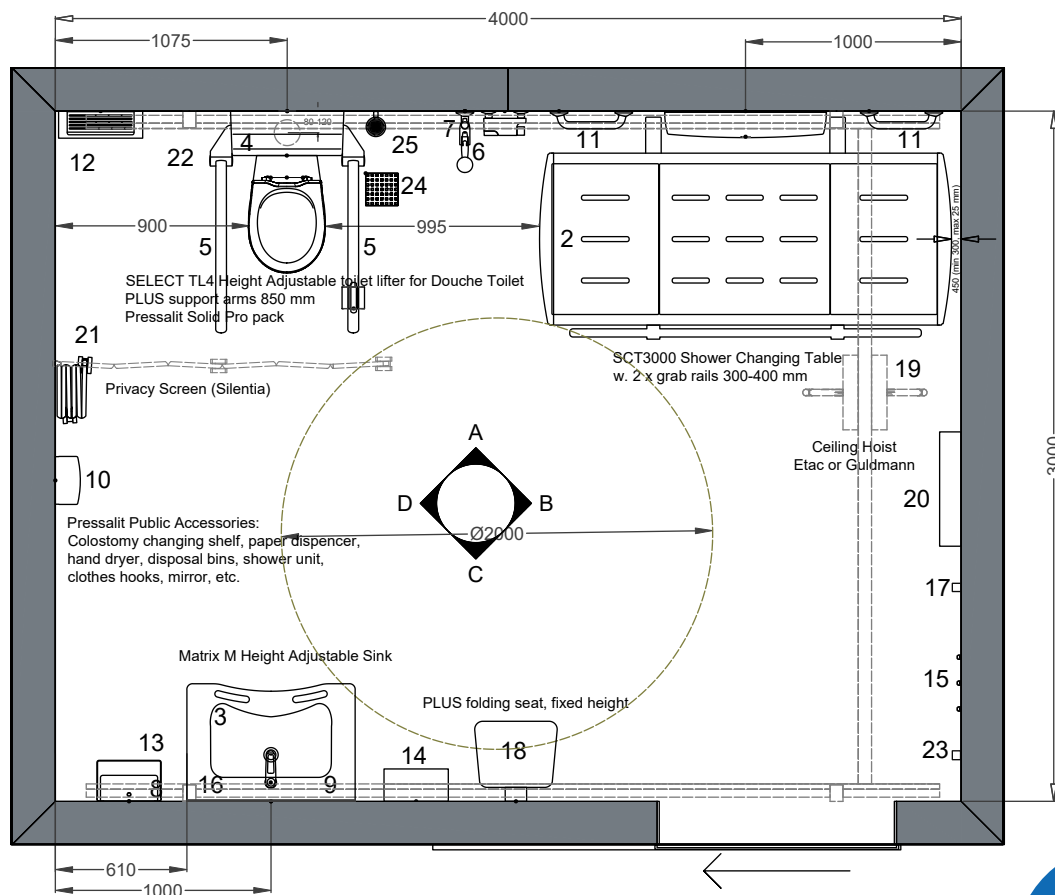
ROOM EQUIPPED
WITH AN ADULT
CHANGING TABLE

ROOM EQUIPPED WITH AN
ADULT CHANGING TABLE



FAMILY RESTROOM/
COMPANION CARE

FAMILY RESTROOM/
COMPANION CARE



Adult Change Facilities by Pressalit

Pressalit's Adult Change Facilities designs follow Changing Places guidelines. In regions with established codes and legislation for Changing Places, venues and businesses must adhere to local standards. Pressalit provides suitable layouts and designs.

This guide is created in compliance with EU standard **EN17210/DS/CEN/TR 17621:2021** for Changing Places and incorporates best practices developed over decades of designing accessible bathrooms.

1. Room size 3 x 4 m (12 square meters) * / 39.37 x 13.12 ft (app. 129.17 square ft).
2. Height adjustable shower changing table SCT3000 L:1910 mm / 75.2 inch. Max user weight (MUM) 227 kg/ 500 lbs
3. Powered height adjustable washbasin Matrix Medium
4. Height adjustable toilet-lifter TL4 for Douche Toilet with Solid Pro Pack toilet/seat, and backrest (O)
5. Foldable arm supports Pressalit Plus 850 mm with a paper holder, qty 2
6. Shower with a shower head, 2 m hose, RT613
7. Vertical grab bar 1000 mm/ 39.37 inches RT104112 with a shower head holder RT600112 (O)
8. Paper towel dispenser PZ30110
9. Mirror above the washbasin positioned at the height for both seated and standing users, RT924
10. Large sanitary disposal bin (60L/15.85 gal), PZ30920
11. Horizontal grab bar 300 mm / 11.8 inches RT100112 or 450 mm/ 17.7 inches RT101112 along the SCT bed to help in changing situations, qty 2 (O)

12. Colostomy changing shelf at 950 mm/ 37.4 inches above the floor, Pressalit Style
13. Waste disposal bin (29L/7.66 gal), PZ30907
14. Hand dryer, PX30515 (Power 840-1000 W. 230 V / 50/60 Hz)
15. Clothes hooks, Pressalit Style
16. Soap dispenser with sensor, PZ30715
17. Hand sanitizer dispenser with sensor, PZ30732
18. Folding Seat, fixed height for family members and bags, R5510112 (O)
19. Full room cover tracked hoist system, max user weight minimum 300 kg/660 lbs
20. Wide paper roll dispenser for use on the SCT (e.g. Dan Dryer 656)
21. Retractable privacy screen (e.g. Silentia 06208-D)
22. Alarm pull cord / alarm button located next to the toilet
23. Alarm reset button between 800 mm and 1000 mm above the floor
24. Floor drain
25. Toilet brush, Q30850

(O) – Optional, Pressalit recommends.

* EU Standard requires a minimum of 12 square meters. However, Pressalit's experience shows that smaller rooms can also be functional. When designing a smaller or irregular room, it's crucial to consider the turning radius and ensure easy access to items.

Other considerations

- **Location**

In every terminal, give priority to placing facilities in easily accessible locations on both the landside and airside, especially in areas where passengers experience extended dwell times or where movement is restricted by security or passport control.

- **Accessible and usable design in general**

Provide unisex accessible toilets, ideally located near other managed facilities. Whenever possible, avoid areas where access is limited by stairs or other barriers. Provide convenient access to the facility via a universal key system, boarding pass scanning, or by requesting assistance from on-site staff.

- **Signage**

Ensure prominent and accessible signage using internationally recognized symbols to clearly mark the location of Adult Change Facilities.



- **Interior**

Sufficient space for large mobility devices. Clear floor space min 1800x1800 mm. Turning radius minimum 1800 mm. Wheelchair parking 800x1300 mm outside clear floor space. Slings for use with the hoist.

- **Hoist system**

Full room-cover overhead tracked and constantly charging hoist system. Flush recessed or shallow ceiling fittings to allow free movement of the moving rail of the tracked hoist.

- **Door**

Doorway of adequate width, min 1000 mm or more. Door opens outwards or there is a sliding door.



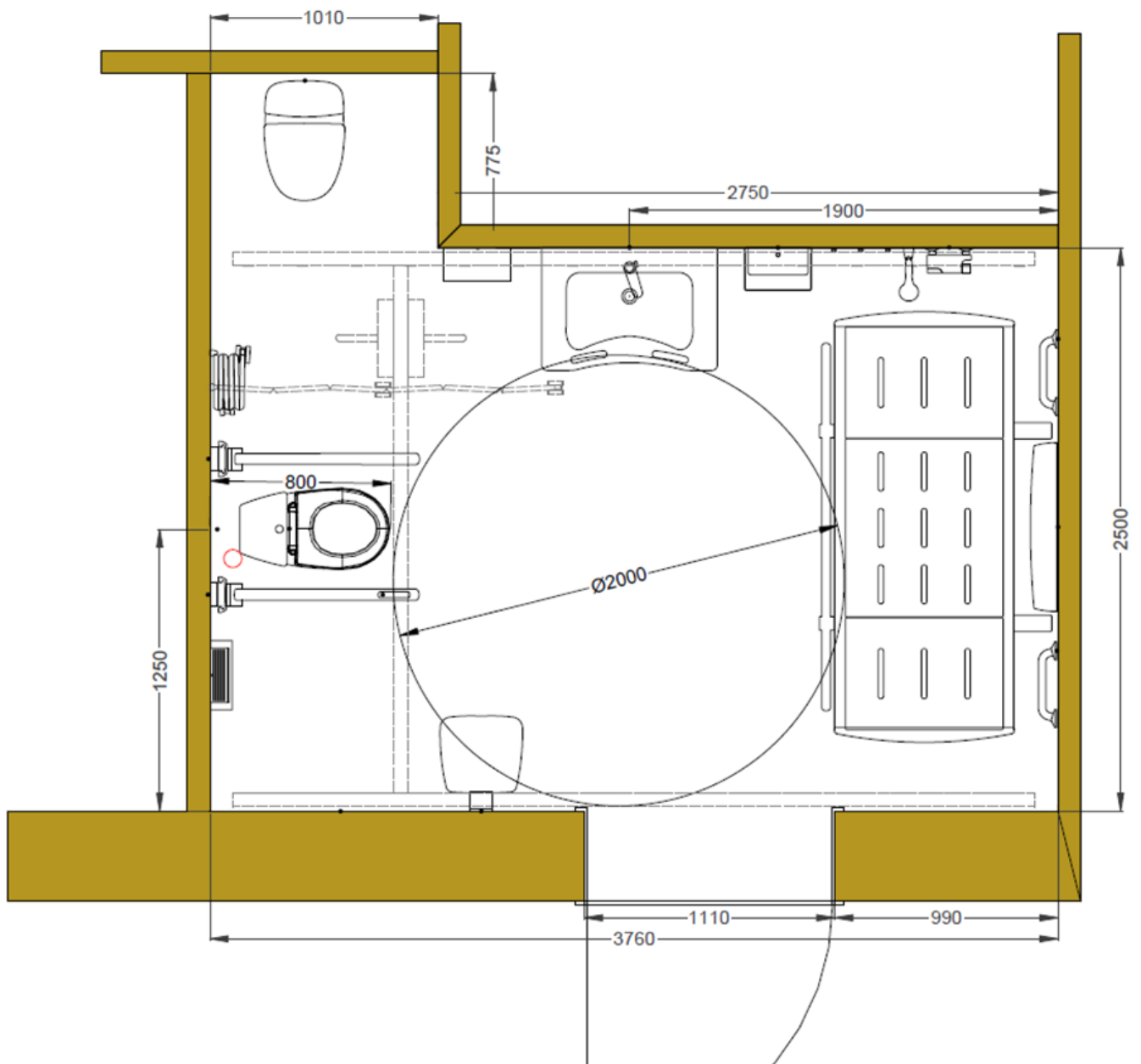
- **Shelf**
Placed at adequate height, 950 mm above the floor.
- **Changing bench**
Suitable for showering and changing of adults. Height adjustable. Minimum outer dimensions 1057 mm x 1910 mm. Maximum user weight (MUM) 227 kg. Safe working load (SWL) 237 kg. Wall-mounted or free-standing.
- **Accessories**
(Mirror, hand towel, soap, waste bin, etc.) Towel dispenser outlet 800-1100 mm. Soap dispenser operable parts at height 800-1100 mm above floor surface. Shelf height 750-850 mm above floor surface. Coat hooks at 850-1100 and 1800 mm above floor surface. Mirror 900-1100 mm above floor surface. Lower edge at a height of max 900 mm, up to a height of 1900 mm.
- **Waste disposal bins**
Large bins with easy-to-use lids or self-closing disposal openings. Where practicable, bins should be recessed.
- **Wash basin**
Height-adjustable and power-operated, with handles and space for elbows. With raised edges preventing water from spilling over the back or down the sides. Designed to minimize dirt-collecting corners, and concealed piping.
- **Toilet (position)**
Peninsular WC with foldable support grab bars at either site. Access to the toilet from each side for lateral transfers. Enough space for caregivers on each side.
- **Toilet seat**
Choose a toilet seat with an anti-bacterial surface that is sturdy and robust enough to withstand public use and multiple lateral transfers. Minimum load capacity 240 kg.
- **Lighting**
Adequately illuminated.
- **Temperature control**
The control of water and room temperature should avoid extreme heat and cold situations. There should be adequate and adjustable space heating. Taps with an anti-scalding feature.
- **Fixture and fittings**
Visual contrast with their background.
- **Privacy screen**
Retractable should be available. Not ceiling mounted.
- **Ventilation**
Facilities should be equipped with natural ventilation or mechanical extraction fans designed to operate with minimal noise to maintain a comfortable and discreet environment.
- **Information on the website**
Once an Adult Changing Facility is installed at your airport, ensure passengers and their companions are well-informed by updating your website with clear, detailed information. Include a description of all available equipment and support features, along with photos of the facility. Travelers with accessibility needs often plan their journeys in advance, so providing transparent, accurate information helps them prepare confidently and reduces travel-related stress.
- **Maintenance**
Connect by Pressalit is a digital solution you can add on our shower and changing tables SCT 2000/2100, SCT 3000 and CT4000/4100. Features notifications on cleaning, overload, unintended use, and prolonged use. Contact Pressalit for more information and demonstration.



Other examples of irregular rooms

Space constraints are a common challenge when identifying a suitable location for an Adult Changing Facility. However, it is entirely possible to create a well-functioning and dignified space — even within smaller or irregularly shaped rooms.

It is important to remember that the alternative — requiring someone to be changed on the floor — is far less acceptable than providing a compact but thoughtfully designed facility.





Sensory Room

US Airways Club



Gates 5, 7-25



"It is so important to make sure that I am not injuring my family members or my husband when they are trying to make sure that my needs are taken care of. The safety of both me and the care provider is vital and that is one reason the height adjustable tables are so important."

Dr. Josie Badger, diagnosed with congenital myasthenic syndrome

"A height adjustable adult sized changing table is a game changer. It allows for so much more freedom.

Just being able to relax with your family and know there is accommodation if you need it is huge". Patricia McCloud, mother of Jordan who is diagnosed with autism and Intellectual Disability.

PREMIUM BATHROOM SOLUTIONS SINCE 1954

Pressalit A/S is a Danish privately owned company with production facilities in Ry, Denmark. Since 1954, we have been designing and producing toilet seats of the highest quality. And since 1975, Pressalit has also been developing accessible bathrooms and height adjustable kitchens for people with reduced mobility. This has made us one of the world's leading manufacturers of premium bathroom solutions. High quality, flawless design and reliable functionality are the core features of our wide range of products.

PRESSALIT SUPPORTS UNITED NATIONS GLOBAL GOALS



Pressalit A/S, Pressalitvej 1, 8680 Ry, Denmark,
T: +45 8788 8788, F: +45 8788 8789
pressalit@pressalit.com, pressalit.com

PRESSALIT®