



BVA LIVE

NEC BIRMINGHAM • 6-7 JUNE 2024
BVALIVE.VETSHOW.COM



THE VET SHOW IN BIRMINGHAM



SUSTAINABILITY



WHAT

DO WE DO?

Our commitment to sustainability extends beyond our venue and suppliers.
Here's a glimpse of our initiatives:



No food waste at our shows. We will place the order as close to the event as possible to ensure all food is eaten and not wasted. However, any waste is also composted.



We encourage the use of the official event app to connect with local practices and organise a carpool. Not only will this shared journey save on costs, but you could even share learning. Feel free to post if you need a lift on our message board. The show app allows exhibitors to publish advertisements through their profiles, place their logos in digital banners in the home page significantly reducing printed paper.



Removed single plastic bottles of water for speakers, instead the theatre managers are given a big glass bottle and recyclable cups to speakers who wish to drink water. This way we avoid speakers leaving full open bottles behind and wasting the water.



Reuse of stage decorations that we store in our office. Stage decorations are stored in our office for reuse purposes and during the event, we use a designated recycling point for decorations to actively encourage and facilitate recycling efforts.



Our show guide, flyers and direct mailing brochures are printed on FSC Accredited stock paper, we've scaled back both our printing and distribution efforts and advise delegates to use the official event app, including publishing our session proceedings online via VIN, instead of printing them. We're using bio compostable materials such as potato starch poly wrap for our mailings and packaging.



Attendee responses to carbon assessment questions inform us on travel and accommodation impact, guiding post-event carbon offset investments.

OUR VENUE

nec
Birmingham

THE NEC IS COMMITTED TO ENSURING SUSTAINABILITY IN ITS WORK AND EVENTS.

NEC Sustain is an evolving sustainability programme designed to adapt to shifting needs. Over the last decade, the NEC has surpassed industry standards to instigate meaningful transformations. Leveraging technology like smart meters and inverters, the NEC has successfully decreased energy consumption. By cutting the recycle flow of the NEC Campus fountain by 20%, an impressive 80% of energy is saved. Additionally, innovative water-saving initiatives such as Urika urinals, adjustable flush levels, and automatic taps have been implemented to further conserve resources.



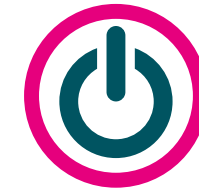
FOOD

- **Food waste is composted on site**, generating electricity to power local infrastructure and providing fertiliser for local farmers.
- **Food sourced locally:** NEC is committed to source local produce with Amadeus, the in-house caterer, traveling no more than 30 miles to support small and medium-sized businesses, with a pledge to source 80% of food and beverage suppliers within a 30-mile radius of the venue.
- **Sustainable packaging:** Amadeus prioritises sustainable packaging, with 60% of their disposable packaging spend going towards recyclable, biodegradable, or compostable products.
- **Reusable cups:** NEC sells reusable cups and offers discounts to customers who bring their own, promoting sustainability while enjoying your daily coffee fix.
- **Supporting local communities:** 60% of food and beverage suppliers are small and medium-sized enterprises, and the venue partners with Olio to donate surplus food locally.
- **Water fountains:** Water fountains are available across the venue for visitors to refill bottles for free, reducing single-use plastic consumption.



WASTE MANAGEMENT

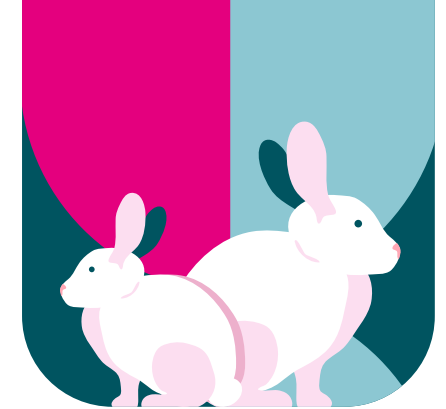
- **The NEC maintains an 80% average recycle rate**, with mixed recycling and general waste transported just 7 miles to a local plant for sorting.
- **Waste travels no more than 30 miles from the site**, while large wood waste items are processed locally, and recyclable material undergoes further sorting and grading.
- **Segregated glass waste is processed in Walsall**, with resulting high-quality glass used for further glass production and lower-quality cullet utilised in road building.
- **Non-recyclable waste is used to generate electricity locally**, with resulting ash used as aggregate for road building.
- **Surplus items are regularly donated to the local community**, shredded paper is taken to the local Cats Protection League for bedding and a local community centre has benefited from spare carpets.
- **Waste reduction through technology:** NEC uses AI to minimise waste in kitchens and monitor stock levels, leveraging technology for sustainability.
- **Plastic waste reduction:** NEC is committed to reducing plastic waste, sourcing water from Princes Gate with bottles made from 55% recycled PET.



ENERGY

- **Energy-saving practices are implemented in NEC kitchens** to contribute to overall energy targets.
- **Energy-efficient LEDs are installed in halls and footpaths**, many with movement sensors.
- **Escalators are designed for energy efficiency**, with automatic start/stop features.
- **Reporting energy improvements** is made simpler through a dedicated intranet and hotline.
- **Exterior venue lighting** adjusts according to daylight saving to prevent energy waste.

OUR SUPPLIERS AND SUSTAINABLE PRACTICES



Partnering with suppliers who share our vision, we ensure sustainability permeates every facet of our operations. **Here's how some of our key partners contribute:**



- APEX/ASTM Level 2 certification, GES will no longer be partnered with Creative Hire. Their new furniture partners are Central Event Hire. They have warehouses in London and Birmingham, which is great from a stock and sustainability perspective
- Paperless orders through e-commerce, app, and onsite services
- 100% recyclable graphics
- Reuse furniture then customise it for sale
- 95% lifts and riggers powered by natural gas

For further information please visit:

[GES Sustainability](#)



- Removing 100% single-use plastic packaging, using OXO based plastic, HYDO and biodegradables products. The wood materials that we purchase meet the requirements of standards FSC STD 40 003 (Version 2.1) EN, FSC STD 40 004 (Version 3.0) EN, FSC STD 40 005 (Version 3.1) EN and FSC STD 50 001 (Version 2.0) EN for FSC® Chain of Custody Certification, as certified by bmtrada.
- When wood is damaged, it presents an opportunity to breathe new life into the material by downsizing it whenever feasible. This process results in the creation of new furniture that occupies less space within trucks, thereby increasing cargo capacity by 60%.
- Thorns are working toward Euro 6 making all their fleet environmentally friendly.
- Thorns have decommissioned their water wall spray booth systems and installed new state of the art air fed and filtered systems. This has reduced their waste paint by 80%.
- Thorns uses warehouse and office lighting to PIR LED strips lights, which has offered a reduction of 20% on energy a year.

For further information please visit:

[Thorns Sustainability](#)



- Minimise the number of trucks required for each event by consolidating AV, set, stage, and furniture onto one truck when possible
- Crew also use public transport where feasible or travel to event sites in crew cars to reduce the number of vehicles
- Invested heavily in state-of-the-art technology, which is more energy efficient, including LED lighting, laser projection, rechargeable digital microphone racks
- Manage and reduce data storage requirements, which in turn reduces associated energy use

For further information please visit:

[PSPAV Sustainability](#)