



Your 2025 show guide

Organised by:



www.careshow.co.uk

Join the conversation: #CareShow25

 @CareShow  @CareShows  /Care-Show  @careshows  @care.show



Leave piles of paper in the past

Introducing Clive, CareLineLive's roarsome new recruit. He's here to help home care providers move on from paperwork and outdated systems to smarter, simpler digital ways of working with our award-winning software.

Whether you're already with CareLineLive or exploring new care management options, discover how we can save time, cut costs and support better care every day.

Meet our friendly team, and find out how Clive could be heading back to your office...

Welcome

to Care Show Birmingham and
the Retirement Living Show 2025



**A very warm welcome
to Care Show
Birmingham! We're
delighted to have you
join us for two inspiring
days dedicated to
celebrating, supporting,
and shaping the
future of care.**

This year's show is all about connection, inspiration, and practical ideas you can take back to your team. From thought-provoking talks and lively panel discussions to hands-on workshops and the latest innovations from our exhibitors, there's so much for you to explore. Most importantly, it's a chance to connect with others who share your passion and commitment to providing outstanding care.

We hope you'll leave the show feeling energised, supported, and full of fresh ideas to put into action. And after a busy day of learning and networking, don't miss the Care Show After Party, the perfect opportunity to relax, celebrate, and enjoy time with colleagues.

Guided by our esteemed advisory board, the conference programme has been designed with you in mind, covering the topics that matter most in today's care sector. Across multiple theatres, you'll hear from leading voices in adult social care, whether you're looking for practical tools to implement straight away or inspiration for the future, the sessions promise to leave you with valuable knowledge and ideas.

And a huge thank you to all our exhibitors and sponsors, without your continued support the show wouldn't be what it is. Lastly, a huge thank you as well to every one of our visitors for choosing to spend the next two days with us, at what we hope you will agree is the best Care Show yet!

Adam Camel, Show Manager

Contents

| | |
|---|-------|
| Must-see Exhibitors | 6-7 |
| Sponsors | 9 |
| What's On | 11 |
| Partners | 13 |
| Thirty Under 30 | 15 |
| Programme Day 1 | 16-17 |
| Programme Day 2 | 18-19 |
| Floorplan | 20-21 |
| The Outstanding Society Learning Lounge | 22 |
| The Retirement Living Show | 23 |
| Exhibitors A-Z | 24-35 |
| Your Notes | 36 |

Opening times

Wednesday 8 October 2025

Doors open 10:00 - 17:00

After Party 17:00 - 22:00

Thursday 9 October 2025

Doors open 10:00 - 16:00

Location

Hall 3
National Exhibition Centre (NEC)
Birmingham
B40 1NT, UK

Download the official show app!

The official show app allows you to:

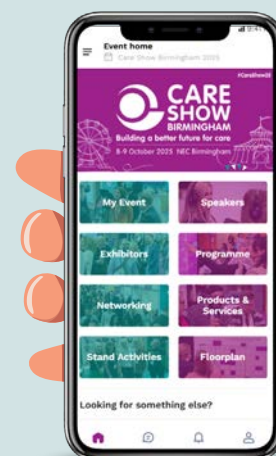
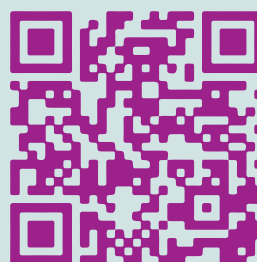
- ✓ Build your own schedule of conference sessions
- ✓ Explore the products and solutions of 300+ exhibitors
- ✓ Network with 4,500+ care professionals
- ✓ Schedule time for meetings with suppliers, speakers and other attendees
- ✓ Post any questions or comments in the 'News Feed' section
- ✓ Explore the floorplan
- ✓ Join discussions on hot topics

How to access the app:

You will have received an email from app.healthcare@closerstillmedia.com when you registered for the event. Find the email and click the magic link inviting you to join the app. You can now create a password and complete your profile.

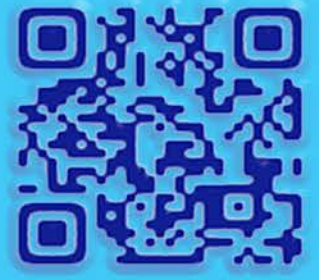
Available to download on Apple and Google Play Stores - Search for the "Care Show" app. Or, scan the QR code below.

Scan to download





Breis
Caring Made Easy



AUTOMATED
INVOICING
& BILLING



PERSONAL
ALLOWANCES



PAYROLL
MANAGEMENT



HR
MODULE



CLIENT
MODULE



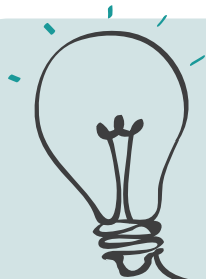
EMPLOYEE
FAMILY
APP



**CARE HOME
MANAGEMENT
SOFTWARE**

**VISIT
STAND
O41**

breis.co.uk



Must-see Exhibitors

O30

danfloor

An Ulster Group Company

Danfloor

danfloor UK Ltd are leading manufacturers and suppliers of high-performance commercial carpets for care homes, healthcare facilities and private hospitals. Our impervious carpet collections are EPD-certified, durable, contain a permanent antimicrobial coating, and deliver excellent acoustic performance, helping create therapeutic environments that support wellbeing and recovery.

danfloor.co.uk

O40



Ice Telecommunications

Ice Telecommunications Limited delivers reliable, tailored telecoms solutions to businesses across the UK. From mobile and hosted VoIP systems to connectivity and IT support, we help organisations streamline communications and stay connected. With a focus on the care sector, we provide cost-effective, secure and scalable services designed to support day-to-day operations and enhance staff and resident experience.

ice-comms.co.uk

M02



MED e-care

MED e-care offer well loved eMAR software to support your care home to deliver, record and analyse excellent medication management. Evidence that you are meeting CQC requirements and driving quality improvements.

mede-care.co.uk

C33



Empathika

Empathika — Redefining Compliance, Restoring Care. Designed from lived experience, Empathika offers care planning, safe medication management, smart scheduling, compliance support, VR engagement, and multi-site oversight. It's a digital companion that listens, guides, and ensures nothing is missed.

empathika.com

K15

PureV by Fairfield Care

Fairfield Care

Fairfield Care offer a wide range of products and services to support care homes, from care consumables, care equipment, medical consumables, furniture, equipment maintenance, servicing and LOLER.

fairfieldcare.co.uk

E70



DDC Dolphin

DDC was founded with the purpose of safeguarding vulnerable patients, care home residents and front-line clinicians from the risk of infectious diseases through engineering innovation. Since 1991 we have designed, engineered and continually developed sluice room machinery, including bedpan washer disinfectors, medical pulp macerators and incontinence product macerators.

weareddc.com

Join the conversation:
#CareShow25

X @CareShow f @CareShows in /Care-Show @careshows @care.show

D50



Sona.

Sona

At Sona, we are passionate about building technology that makes a genuine difference to the lives of Social Care staff. Sona is the award-winning next generation workforce management platform that combines the functionality you expect from any management solution - including Scheduling, Time & Attendance, HR and Payroll - with dedicated features to empower staff and solve the unique challenges of Social Care, all in a user-friendly, end-to-end platform.

sona.is

N70



apetito

Apetito

apetito are the leading supplier of nutritious and delicious care home meals. We are proud to provide great, high-quality food that is developed with health and nutrition in mind and caters for a wide variety of dietary needs. We are passionate about providing our partners with the expert skills and knowledge to create an exceptional dining experience, where mealtimes can be both shared and enjoyed by residents.

apetito.co.uk

M51

WILTSHIRE

EST. FARM 1991

FOODS

Wiltshire Farm Foods

At Wiltshire Farm Foods Professional, we provide specialist nutrition solutions that integrate seamlessly with fresh-cook meal services. Our offerings help care homes deliver high-quality, customised meals tailored to the unique needs of residents, including those with dysphagia, dementia, and allergies.

wffpro.co.uk

E10



Harbour

Harbour ATS

We believe in building recruitment solutions that work the way you do. For over 17 years, we've partnered with businesses of all sizes, including many in the healthcare sector, to build recruitment systems that tackle real-world challenges, such as strict compliance, high applicant volumes, and tight budgets. Our approach is simple: deliver powerful technology that's easy to use, highly configurable, and always focused on business outcomes.

harbourats.com

G51



coolcare
admin made easy

CoolCare

CoolCare Ltd is dedicated to making care home operations easier, more efficient, and more profitable. Our Care Home Management Software simplifies the transition to digital operations, saving money and freeing up management time for better care. With decades of experience in care home management through LNT Care Developments, CoolCare is designed to meet the specific needs of care operators, saving managers and administrator's valuable time.

coolcare.co.uk

H11



Medicine
DROP

Medicine Drop

Medicine Drop Pharmacy makes medication management simple, stress-free, and reliable for all Care Facilities. Specialists in supporting care homes, they deliver same day - safe and personalised solutions that keep residents' health on track. With easy-to-use blister packs, medicines are organised clearly by date and time—no confusion, no missed doses.

medicinedrop.co.uk



Proud to have supported over
13.4 THOUSAND
care workers with over
**£6.6 MILLION IN
GRANTS AND SUPPORT**

Support us to help even more
www.thecareworkerscharity.org.uk



Download the official Care Show Birmingham app!

Have everything in the palm of your hand with the Care Show app.

The official app allows you to:

- Build your own schedule of sessions
- Explore the products and solutions of 300+ exhibitors
- Network with 4,500+ care professionals
- Schedule time for meetings with suppliers, speakers and other attendees
- Explore the floorplan



Download on the
App Store



GET IT ON
Google Play

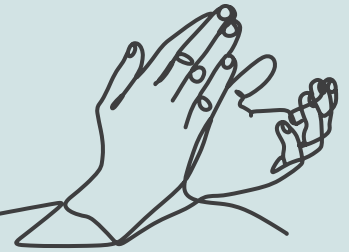
How to access the app:

You will have received an email when you registered for the event. Find the email and click the magic link inviting you to join the app. You can now create a password and complete your profile.

Available to download on Apple & Google Play Stores -
Search for the "Care Show", or scan the QR code



Thank you to our Sponsors



CARE KEYNOTE THEATRE



PEOPLE, WORKFORCE &
WELLBEING THEATRE



BUSINESS THEATRE



DESIGN, BUILD AND ENVIRONMENTS THEATRE



HEMOCARE THEATRE



TECHNOLOGY THEATRE



ONLINE REGISTRATION



SPEAKER LOUNGE

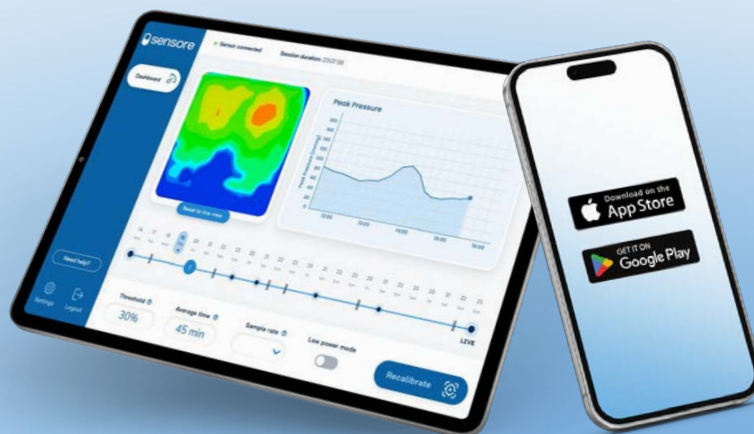


visit our website

Continuous & Automated Pressure Ulcer Prevention

with real-time pressure mapping and 'Smart Alert' AI

sensore.health



My Purchasing Partner
By Buyers Edge Platform

HELPING YOU BUY BETTER



Over
£160m
spend
managed in
2024

Support
across all
care-related
categories

Supporting
procurement
of over 28.8m
healthcare
meals in
2024



My Purchasing Partner are procurement specialists,
helping businesses streamline purchasing, saving time and money across categories from food and chemicals to uniforms and PPM.

Backed by Buyers Edge Platform, we combine data-driven insights with global purchasing power to secure clients the best products, prices, and outcomes without compromising quality or compliance. We're proud to work with care groups across the UK, delivering real savings, improving efficiencies and supporting frontline teams to focus on what matters most.

And here's the difference – there are no fees or contracts – just results!
MPP succeed by building trust, delivering measurable value, and becoming an extension of your team.

Let us simplify your procurement and help you buy better

£35,500,000
Total savings made for our clients
since our inception in 2011

2,750
Sites in the UK - from large groups to independent
sites

10.3%
Average saving per site based on a
range of goods and services



info@mypurchasingpartner.co.uk

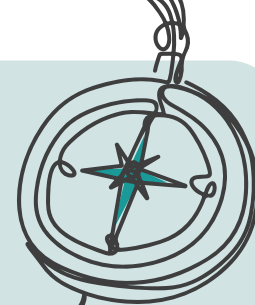


0800 121 6440



My Purchasing Partner Limited

What's On?



Meet the Inspector

Have a relaxed, face-to-face conversation with a CQC inspector. Ask them your questions and find out how to excel in your next inspection.

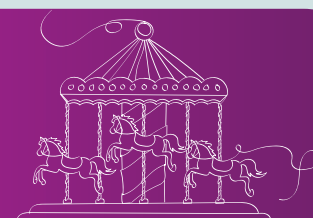
STAND K50



apetito VIP & Speakers Lounge

A private area for Care Home groups where you can enjoy a snack and a drink while networking with fellow VIPs.

STAND N70



Care Show Carousel

Enjoy the fun fair by taking a ride on the Care Show Carousel or strike your best pose in front of it!

STAND N12



The Care Innovation Challenge

Hosted by National Care Forum, here you can find the latest products and services for the care sector.

STAND D13



Care England Pavilion

Care England and their fantastic partners are joining forces at the Care England Pavilion. Swing by to see what they're all about.

STAND B36



Care Show After Party

After a full-on first day at Care Show Birmingham, it's time to relax, recharge, and reconnect at our first-ever Care Show After Party - an evening of live music, tasty street food, refreshing drinks, and brilliant networking.

LOCATION: PARTY AREA



Café

Sit down and have a cuppa in the café and wind down from a day of learning and exploring Care Show Birmingham.

STAND CA1



Home Care Lounge in partnership with Homecare Association

A dedicated area to meet other domiciliary care providers and share your experiences.

STAND F01



Caring Conversations - sponsored by Cornerstone Care Consultants

Hear from our speakers as they talk more freely about key topics impacting social care.

STAND C55

fowleruk.com

Commercial Laundry & Catering Equipment



Commercial Laundry & Catering Equipment.

Laundry Equipment | Kitchen Equipment | Maintenance & Repair | New Build Design & Fitout

Contact Us Today.

01200 444430 | www.fowleruk.com

FowlerUK, Unit 9 Deanfield Drive, Clitheroe, Lancashire BB7 1QJ

VISIT US ON

STAND G02

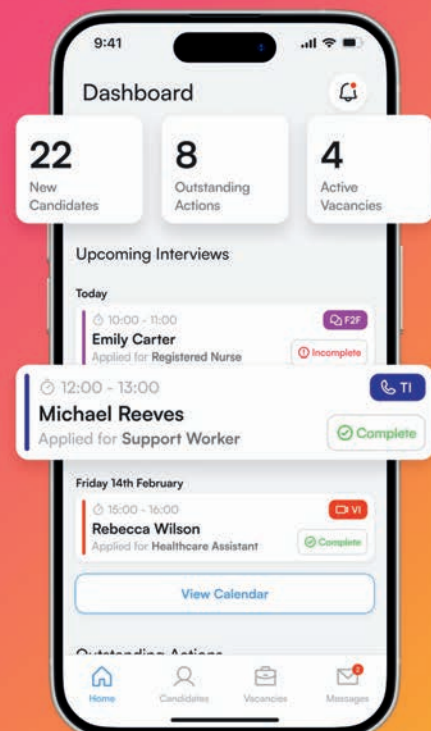


Don't lose good candidates to bad systems.

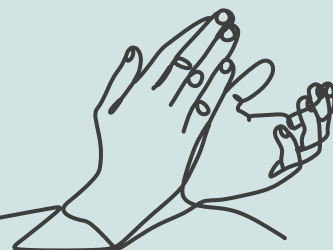
Harbour's safer recruitment solution is designed exclusively for social care.

- Reduce your time-to-hire by up to 50%
- Stay compliant with built-in checks & auditability
- Save time & money with intelligent automation
- Transform the candidate experience

Find us on stand E10 or visit harbourats.com



Thank you to our Partners



**Care Home
MANAGEMENT**

Q CareQuality
Commission

**THE
OUTSTANDING
SOCIETY**

CARE & NURSING
Essentials
YOUR INDEPENDENT GUIDE TO THE CARE INDUSTRY

**care
home**

**THE CARE
HOME
ENVIRONMENT**

ID InclusiveDesign
everybody; every building

**HEALTHCARE
Matters**

CARE ENGLAND
Representing independent care providers

**NATIONAL
CAREassociation**
MERGED WITH **RNHA**
The natural choice for all social care SME providers

CareChoices
Publications

NCF
THE NATIONAL CARE FORUM

**Homecare
Association**

Caringuk

CMM
CAREMANAGEMENTMATTERS

**THE
CARER**

t&o



**FIVE
ON A
BIKE**





SCAN ME

Kashani Collection

WWW.ILIV.CO.UK

ILIV

— CONTRACT TEXTILES —



Celebrating the future of care with the Care Show Thirty Under 30 Class of 2025

At a time when the sector faces growing challenges and evolving needs, it's never been more important to acknowledge the exceptional commitment, innovation and impact made by the next generation of care leaders. These awards honour individuals who go above and beyond in their roles - whether in residential care, domiciliary care, nursing, catering, administration, management, construction, or care environment design.

The awards are a celebration of potential, a thank you for dedication, and a recognition of the young talent leading the sector forward. Winners will be honoured at a special ceremony on Wednesday 8 October at Care Show Birmingham 2025, where they will be presented with an award marking their outstanding contributions.



The Care Show Thirty Under 30 Class of 2025:

Adam Batey, Operations Manager, Dale Care

Amie Elson, Care Manager, Hengoed Park Ltd

Annie Aston, Lead Activities Coordinator, Hengoed Park Ltd

Ayana Mohamed, Director, Standard Care Ltd

Bailey Greetham-Clark, Founder, Be Great Fitness

Callum Pearce, General Manager, Oyster Care Homes

Chloe Hart, Deputy Manager, Shores Homecare Ltd

Chris Brown, Registered Manager/Business Development Manager/Director, Alternative Care Ltd and Auralis Homes

Colby Ebsworth, Senior Support Worker, Ryde House Group

Deanna Murray Wiggins, House Manager, Aspects Care

Dominic North, Client Liaison Manager, Signature Senior Lifestyle

Dr Jade Okene, Operations Director – Service Transformation & Partnerships, Passion Tree Care Services

Gemma Bell, Senior Carer, St Michaels Homes Ltds

Gemma Hebron, Deputy Manager, West Park Care

Grace Evans, Managing Director, Salveo Care Ltd

Isaac Hemper, Home Manager, Ryde House Group

Jasmin Cartwright, Senior Carer, DKL Healthcare Ltd

Jodie Ebsworth, Home Manager, Ryde House Group

Kara Cave, Registered Manager, Unique Senior Care

Katie Bedwin, Clinical Educator, Superior Healthcare

Katie Oerton, Business Manager, Forevermore Care

Katy Hague, Chief of Staff, Oyster Care Homes

Kush Patel, Deputy Manager, Cherrytree Care Home/Kara Healthcare

Olivia Walsh, Branch Manager, Agincare

Rhiannon Corns, Deputy Manager, Lavender Hills Care Home

Sean Gilfillan, Care Coordinator, Unique Senior Care

Sinead Nealon, Pharmacy Manager, Kara Healthcare

Summer Smith, Registered Manager, Trinity Homecare Limited

Taylor Turner, Service Lead, Forevermore Care

Zachary Dawson, Operations Director, Bloom Care Solutions

Care Show Birmingham 2025 Programme

Wednesday
8 October 2025



CARE KEYNOTE THEATRE

Sponsored by: 

10:15 - 10:30

Opening presentation and chair's remarks

Big Ian Donaghy, Dementia Campaigner, BIGIAN.CO.UK
Sue Sheath, Director of Regulation and Quality Improvement, Barchester Healthcare

10:30 - 11:00

Putting policy into practice: the impacts of the recent government updates

Vic Rayner, CEO, National Care Forum

11:05 - 11:35

Beyond dependency: how Nourish Care are working with providers and funders to determine the true cost of care, build trust, and promote sustainable operations in social care

Amy Kearns, Product Lead, Nourish Care

Sponsored by: Nourish

11:50 - 12:20

An update from the CQC

Chris Badger, Chief Inspector of Adult Social Care and Integrated Care, Care Quality Commission
In partnership with: CQC

12:45 - 13:15

People first: reimagining workforce resilience in UK social care

Teresa Wilson, Operations Director, Brook Street Social Care

Sponsored by: Brook Street

13:30 - 14:00

Voices of change: excitement and opportunity in the Adult Social Care Workforce Strategy

Chair - Sarah Gilbert, Head of Workforce Strategy Implementation Unit, Skills for Care
Rachel Kelso, Founder & Managing Director, Homecare Voices
Emily Hindle, Head of Policy, Alzheimer's Society
Beverly Fultit, Director of Digital Transformation, National Care Forum

In partnership with: Skills for Care

14:15 - 14:45

Dishing up stability for care home catering costs

Dr Phil Hammond, Retired Doctor / Journalist
Clare Hunt, Head of Business, Apetito
Richard Ayres, Social Care Advisor, Care England
Sponsored by: Apetito

15:00 - 15:30

Registering with the CQC: requirements of registration and our expectations

Patrick Wright, Deputy Director of Registration, Care Quality Commission
Gemma Giffens, Registration Manager, Care Quality Commission
Debbie Cave, Registration Manager, Care Quality Commission
In partnership with: CQC

15:45 - 16:15

Providers Unite: campaigning for change

Nadra Ahmed, Executive Chairman, National Care Association
Katrina Hall, Project Manager, Providers Unite

16:25 - 16:55

What advice would you give Baroness Casey on social care?

Dr Jane Townson, CEO, Homecare Association
In partnership with: Homecare Association

16:55 - 17:00

Chair's closing remarks

Sue Sheath, Director of Regulation and Quality Improvement, Barchester Healthcare

HOMECARE THEATRE

Sponsored by: 

10:10 - 10:15

Chair's opening remarks

Amrit Dhaliwal, CEO, Walfinch

10:15 - 10:45

Moving beyond the comfort zone: compassion fatigue in nursing and care

Claire Sutton, Lead Nurse, Independent Health and Social Care West Midlands Region, Royal College of Nursing
Vicky Sandy-Davis, Lead Nurse, Independent Health and Social Care West Midlands Region, Royal College of Nursing

10:55 - 11:25

How to not lose your sponsorship licence

Rachael Crook, CEO & Founder, Lifted Talent
Sponsored by: Lifted Talent

11:35 - 12:05

10 more years: the importance of operationally sustainable homecare business for the future of health and social care

Paul Antonioni, Product Lead, Nourish Care
Paul Barnes, Chief Customer Officer, Nourish Care
Sponsored by: Nourish Care

12:15 - 13:00

From hands-on to high-tech: what does AI mean for homecare?

Amrit Dhaliwal, CEO, Walfinch
Dr Jane Townson, CEO, Homecare Association
Gemma Lock, Head of Commercial, Trinity Homecare
Hannah Morgan, CEO, Care-Brain

13:10 - 13:40

Becoming a B-Corp: the first steps to becoming more environmentally sustainable

Trudie Fell, CEO & Founder, Bellevie

13:50 - 14:20

From consulting to care: what other sectors can teach us about homecare transformation

Gemma Lock, Head of Commercial, Trinity Homecare

14:30 - 15:15

Insights into delegated healthcare activity: different perspectives on the journey of delegation

Alex Ball, Workforce Delivery Coordinator, Skills for Care
Deborah Sturdy, Chief Nursing Officer, DHSC
Rachel Yates Hoyle, National Practice Innovation Lead, Skills for Care
Michelle Tennant, Clinical Governance Lead, Home Instead
Rob Moriarty, Expert by Experience

15:25 - 15:55

Google Business Profile: how to stand out when people search for a care provider

Marie Page, Marketing Manager, CareLineLive
Sponsored by: CareLineLive

16:05 - 16:35

Collaborate to care: cracking the code of local authority engagement

Sharon Lowrie, Chief Executive, Be Caring Limited

16:35 - 16:40

Chair's closing remarks

Amrit Dhaliwal, CEO, Walfinch

PEOPLE, WORKFORCE & WELLBEING THEATRE

Sponsored by:  

10:10 - 10:15

Chair's opening remarks

Lee Trueman, Senior Business Development Manager, OneTouch

10:15 - 10:45

Employee wellbeing: promoting wellness in the workforce

Dr Olivia Curno, CEO, Elizabeth Finn Holmes
Peter Norgate, People Director, Elizabeth Finn Holmes

10:55 - 11:40

Successful co-production: practical approaches and success stories

Chair - Kathryn Marsden, Chief Executive, Social Care Institute for Excellence
Jacqui Darlington, Member, National Coproduction Advisory Group
Caroline Waugh, Member, National Coproduction Advisory Group
Deborah Rozansky, Director of Policy, Research & Information, Social Care Institute for Excellence

11:50 - 12:20

Wellness in bathing for body and mind

Carol Sinden, Director of Global Medical Affairs, Arjo
Sponsored by: Arjo

12:30 - 13:00

Let's talk about death and dying: what is palliative care?

Katie Costello, Soul Midwife, Funeral Celebrant and CPD Accredited Death Educator, Katie Costello End of Life Support Services

13:10 - 13:40

People-centred scheduling: unlocking time and quality in care delivery

Narinder Hans, Strategic Customer Success Manager, Deputy
James Westwood-Beere, Chief People Officer, Lifeways
Amanda Brooke, Chief Transformation Officer, Lifeways
Sponsored by: Deputy

13:50 - 14:20

An update on CQC's Dementia Strategy

Stefan Kallee, Deputy Director of Adult Social Care, Care Quality Commission
Jayne Rigby, Expert by Experience, Choice Support
In partnership with: CQC

14:30 - 15:00

How we cut recruitment screening time by 73% with AI

Elan James Weedon (EJ), Co-founder, Team Lily
Ellie Sheridan-Swain, Group Recruitment Director, Libertatum
Sponsored by: Lily

15:10 - 15:40

Framework update: navigating quality statements and evidence categories

Paula Cashmore, Product Owner, Achievable Care Quality Community
Julie Garrity, Independent Health & Social Care Advisor

15:50 - 16:20

Session sponsored by 6D Dementia

Sponsored by: 6D Dementia

16:30 - 17:00

Personalised care and support plan standards: managing care better

Dr Nilesh Bharakhada, Clinical Director, PRSB

Join the conversation: #CareShow25

X @CareShow f @CareShows in /Care-Show @careshows @care.show

BUSINESS THEATRE

Sponsored by:



10:15 - 10:20

Chair's opening remarks

Jade Kent, Healthcare Partner, Stephens Scown LLP

10:30 - 11:00

Insights from 2025: a care market review

Lee Howard, Regional Director (North, Midlands & Anglia), Christie & Co

11:50 - 12:20

Latest government updates on sponsorship: what the changes mean for you

Matt Bond, CEO, Borderless

12:30 - 13:15

Recruitment and retention: tackling the critical challenges

Liz Jones, Policy Director, National Care Forum
Phil Orton, Deputy Chief Executive, Making Space
Kate Silver, Director of People, Royal Star & Garter
Reena Devi, Senior Research Fellow, School of Healthcare, Faculty of Medicine and Health, University of Leeds
Karen Spilsbury, Executive Lead for School for Social Care Research, University of Leeds
In partnership with: National Care Forum



13:25 - 13:55

Tea with Tobii live: becoming the care provider of choice

Tobi Alli-Usman, Managing Director, Prosperwell
Beth Braine, Account Director, Prosperwell
Chris Goulding, Head of Marketing & PR, Care South
Rosa Vaquero, Head of Marketing & Communications, Greensleeves
Sean Pompeus, Head of Marketing, Eleanor Care

14:05 - 14:50

Future-proofing your business: developing a plan for business viability

Jay Dodhia, Director & Co-Founder, Serene Care
Palvi Dodhia, Director & Co-Founder, Serene Care
Rishi Jawaheer, Founder & CEO, Care Vision

15:00 - 15:30

Lived experience meets intelligence: real stories of care

Alex Potter, Chief Product Officer, PCS
Ashleigh Dueker, Product Director, PCS
Jenny Varley, Chief Marketing Officer, PCS
Marina Graves, Registered Manager, Pearl Care
Alana Waller, Care Plan Coordinator, Pearl Care
Sponsored by: Person Centred Software



15:40 - 16:10

Starting strong: overcoming the challenges of setting up as a new provider

Palvi Dodhia, Director & Co-Founder, Serene Care
Angela Boxall, CEO, Majesticare
Samantha Crawley, Director & CEO, The Outstanding Society & EQ Care Group

16:20 - 16:50

Scaling rapidly: how independent care providers can set new standards within the sector

Nick Somani, CEO, Kara Healthcare

16:50 - 16:55

Chair's closing remarks

Jade Kent, Healthcare Partner, Stephens Scown LLP

TECHNOLOGY THEATRE

Sponsored by:



10:15 - 10:20

Chair's opening remarks

Dr Caroline Green, Director of Research, Institute for Ethics in AI, University of Oxford

10:20 - 10:50

Inclusive use of tech in self-directed support

Chair - Anne-Marie Perry, Director, CareMatch
Chris Watson, Founder & CEO, Self-Directed Futures
Amy Lewis, Managing Director, Just Checking
Michelle Lloyd, Regional Manager, KeyRing Living Support Networks
Lucia Fusko Harcinikova, KeyRing Living Support Networks

11:00 - 11:30

Session sponsored by CoolCare

Sponsored by: CoolCare



11:40 - 12:10

A European perspective on the digital transformation of care

Lisa Delaney, Country Director UK, Sensio
Martin Paulette, Sales Manager, Sensio
Emanuel Kirchhoff, Country Manager - Germany, Sensio
Sponsored by: Sensio



12:20 - 12:50

Tech transformations: funding your digital leap

Chair - Anisa Byrne, General Manager
- HSC - Care, The Access Group
Nina Allen, Founder & CEO, Austen Allen Homecare
Trudie Fell, CEO & Founder, Bellevie
Dr Kristoffer Kentta, Senior Engagement Manager, Candesic
Matthew Hoad-Robson, Founder, Tend VR

13:00 - 13:30

Can improving care quality boost occupancy by 5%? Find out how

Thomas Tredinnick, CEO & Co-Founder, Ally Cares
Samir Patel, CEO, Oaklands Rest Home
Sponsored by: Ally Labs



13:40 - 14:25

How to actually use AI in your care business: a LIVE DEMO

Jonathan Cunningham, Chair and Founder, Care Managers' Inner Circle

14:35 - 15:05

24/7 safety through AI: real results from real care homes

Annie Ricotta, Founder, Aureum Care
Sponsored by: Verso Vision



15:15 - 15:45

Powered by people: a blended approach to Technology Enabled Care

Joanna Scammell, Managing Director for Technology Enabled Care, Community Integrated Care

15:55 - 16:40

The new role of care technologists

Beverly Futit, Digital Lead, National Care Forum
Fran Simmons, Senior Workforce Strategy Project Manager, Skills for Care
Clare Burgess, CEO, Kyndi
Paula Sardinha, Lived Experience / National Coproduction Adviser, Think Local Act Personal
Isaac Samuels OBE, Lived Experience / National Coproduction Adviser, Think Local Act Personal
Nicola Cooper, Head of Digital Futures, Scottish Care
In partnership with: National Care Forum



16:40 - 16:45

Chair's closing remarks

Dr Caroline Green, Director of Research, Institute for Ethics in AI, University of Oxford

DESIGN, BUILD & ENVIRONMENTS THEATRE

Sponsored by:



10:10 - 10:15

Chair's opening remarks

Russell Pillar, Interiors Consultant / Director, Interiors by Amara Hammond



10:15 - 10:45

Designing dignity: I wanna dance with somebody (who values ROI)

Simon Hall, Group CEO, Rasico
John Bell, Managing Director, ADG Architects
Kieren Cole, Partner, Knight Frank
Satyen Shingadia, Head of Healthcare, Hospitality & Leisure, Punjab National Bank
Tom Proctor, Relationship Director, North, Cynergy Bank
Dan Hewitt, Director - Healthcare Debt Finance, Growth Lending
Ali Willoughby, Associate Healthcare, Colliers
Sponsored by: Rasico

10:55 - 11:25

Living better: enhancing quality of life in care settings

Chair - Russell Pillar, Interiors Consultant / Director, Interiors by Amara Hammond
Eirlys Roff, Care Home Activities Specialist, Bring A Smile
Mary Bruce, Founder & Head of Education, Dementia Educators
Paula Cashmore, Product Owner, Achievable Care Quality Community
Zeta Zeta, Operations Director, Angel Care



11:35 - 12:05

The power of three: designing care settings for service users, families, and care staff

Russell Pillar, Interiors Consultant / Director, Interiors by Amara Hammond
Natalie Rooney, Head of Projects, Interiors by Amara Hammond
Sara Livadeas, Strategy & Social Care Consultant, Social Care Works Ltd
Sponsored by: Amara Hammond

12:15 - 13:00

Financial crossroads: the difference between funding a refurb vs a new build

Derek Breingan, Head of Health & Social Care Sector, Virgin Money
Jamie Stuart, Co-Founder & Chief Financial Officer, Fortava Healthcare
Samantha Crawley, Director & CEO, The OS & EQ Care Group

13:10 - 13:40

Outside of dementia: designing for specialist complex care needs

Chair - Jacqui Smith, Interior Designer, Homesmiths
Diana Celella, Managing Director, Drawing Room Interiors
Joe Hurst, Social Care K.A.M., Altro
Andy Barnes, CEO, Godfrey Care



13:50 - 14:20

Can energy-intensive laundry become net-zero friendly?

Tim Brooke, Consultant, Washco
Pete Hosking, Managing Director, Washco
Sponsored by: Washco

14:30 - 15:00

Improving acoustics in care settings: what does good care sound like?

Pritesh Nathwani, Director/Owner, Symphony Sound

15:10 - 15:55

Playing with fire: the immense challenges of social care fire management

Chair - Jonathan Cunningham, Chair & Founder, Care Managers' Inner Circle
Tia Cain, Managing Director, Umbrella Care Consultancy
Jack Springford, Business Development Manager and Lead Fire Risk Assessor, Safe I.S. Ltd
Mark Riley, Managing Director, High Rise Fire Safety Limited

16:05 - 16:50

Inclusive design: designing for dementia

Glenn Knight, CEO, Training 2 Care

Care Show Birmingham 2025

Programme

Thursday 9 October 2025



CARE KEYNOTE THEATRE

Sponsored by: 

10:10 - 10:15

Chair's opening remarks

Big Ian Donaghy, Dementia Campaigner, BIGIAN.CO.UK

10:15 - 11:00

Inside the coroner's court: a mock inquest for care providers

Zoe Fry, Director, The Outstanding Society
Keara Bowgen-Nicholas, Senior Associate, RWK Goodman
Gemma Nicholas, Senior Associate, RWK Goodman
Lara Bywater, Director, The OS & LDC Care
Jon Taylor, Divisional Director, Head of Corporate Risks, Health & Care, Howden Group
Ruth French, Director, The OS
Sabrina Meetaroo, Associate Director, Howden Group
Mei-Ling Huang, Partner, Howden Group
Sunyana Sharma, Inquest and Professional Discipline Barrister and Assistant Coroner, 3PB Barristers-Hampshire, Southampton and Portsmouth
Caroline Cosh, Director, The OS & Clifton Home Care.

11:15 - 11:45

Incidents, accidents, and action: how co-production and lived experience inform Nourish's innovative new technology

Mark Grey, Product Lead, Nourish Care
Sponsored by: Nourish Care

12:00 - 12:45

Government update: what will the Fair Pay Agreement look like?

Tom Surrey, Director - Adult Social Care Workforce & Policy, Department of Health and Social Care

13:45 - 14:15

How to ensure you're always inspection-ready

Sue Sheath, Director of Regulation and Quality Improvement, Barchester Healthcare
Louie Werth, Director, Care Research

14:30 - 15:00

Prevention is the new cure: LIVE podcast episode

Steve Brine, Former Minister and Chair of Health & Social Care Select Committee
Dr Sarah Wollaston, Former MP
Special guest: Nadra Ahmed, Executive Chairman, National Care Association

15:15 - 15:45

AI in social care: Protecting privacy and implementing corporate AI at scale

Sam Vernon, New Business Sales Manager, OneAdvanced
Sponsored by: OneAdvanced

15:45 - 15:50

Chair's closing remarks

Sue Sheath, Director of Regulation and Quality Improvement, Barchester Healthcare

HEMOCARE THEATRE

Sponsored by: 

10:10 - 10:15

Chair's opening remarks

Richard Stanfield, Franchise Support Manager, Walfinch

10:15 - 10:45

Secret diary of a care worker: in conversation with Kathryn Faulke

Kathryn Faulke, Author of 'Every Kind of People: a journey into the heart of care work'
Rachael Crook, CEO & Founder, Lifted Talent
Sponsored by: Lifted Talent

10:55 - 11:25

Sustainable growth strategies: business development for the long term

Stuart Callister, Founding Director, Severn Vale Home Care
Jenny Bryant, Live-in Care Manager, Severn Vale Home Care

11:35 - 12:05

Homecare registration: requirements of registration and our expectations

Patrick Wright, Deputy Director of Registration, Care Quality Commission
Gemma Gittens, Registration Manager, Care Quality Commission
Debbie Cave, Registration Manager, Care Quality Commission
In partnership with: CQC

12:15 - 13:00

Delegated health tasks: the care workers' view

Karolina Gerlich, CEO, The Care Workers' Charity
Jon Healy, Care Worker & Member, Care Worker Advisory Board & Champions Project
Caroline Tate, Care Worker & Member, Care Worker Advisory Board & Champions Project
Omatule Ameh, Care Worker & Member, Care Worker Advisory Board & Champions Project

13:10 - 13:40

The Employment Rights Bill: progress or political theatre?

Daisy Cooney, Head of Policy, Homecare Association
In partnership with: Homecare Association

13:50 - 14:20

Hidden in plain sight: how the Disabled Facilities Grant can help you support independent living

Paul Smith, Director, Foundations (National Body for DFGs and Home Improvement Agencies, England)

14:30 - 15:00

Dementia Friends: changing dementia services within homecare

Claire Ronan, People Director, Bluebird Care
Lee Walsh, Director of Group Operations, Bluebird Care

15:10 - 15:40

Session sponsored by Evondos Group

Sponsored by: Evondos Group

15:40 - 15:45

Chair's closing remarks

Richard Stanfield, Franchise Support Manager, Walfinch

PEOPLE, WORKFORCE & WELLBEING THEATRE

Sponsored by:  

10:10 - 10:15

Chair's opening remarks

Lee Trueman, Senior Business Development Manager, OneTouch

10:15 - 10:45

2000 voices: care worker wellbeing survey results from the Care Workers' Charity

Karolina Gerlich, CEO, The Care Workers' Charity

10:55 - 11:25

On their feet, not at their desks: delivering benefits to a deskless workforce

Jenny Hinde, Chief People Officer, Personal Group
Sponsored by: Personal Group

11:35 - 12:20

Care talk: how language affects the public perceptions of care

Daniel Casson, Digital Transformation Advisor, Casson Consulting
Jayne Sambrooks, PR & Engagement Manager, The Access Group
Tilly Simmons, Director of Operations, Alternatives Future Group
Simon Bottery, Senior Fellow, Social Care, The King's Fund
Jennifer Pearl, Member of National Co-Production Advisory Group, Think Local Act Personal
Neil Crowther, Convenor, Social Care Futures

12:30 - 13:15

Modern slavery and exploitation of workers

Clair Brown, Adult Social Care Senior Specialist, Care Quality Commission
Holly Spiers, CEO, Walsingham Support
In partnership with: CQC

13:25 - 13:55

The carer register is here: raising standards in care and why it matters to you

Liz Blacklock, CEO, NACAS

14:05 - 14:35

PINCH ME: identifying deterioration and reducing avoidable hospital admissions

Stella Shaw, Director, StellarCare NW Ltd
Liz Blacklock, Director of Operations, National Association of Care and Support Workers
Dr Kirsten Protherough, CEO, Care Boodle

14:45 - 15:15

Future-proofing your marketing and communications and standing out in the face of AI

Sponsored by: Contour

15:25 - 15:55

Safe spaces: building better cultures and psychologically safe workplaces

Lauri Smith, Founder, The Civility Gap

15:55 - 16:00

Chair's closing remarks

Lee Trueman, Senior Business Development Manager, OneTouch

Join the conversation: #CareShow25

@CareShow @CareShows /Care-Show @careshows @care.show

BUSINESS THEATRE

Sponsored by:



10:10 - 10:15

Chair's opening remarks

Amy Ralston, Associate, Stephens Scown LLP

10:15 - 10:45

Optimising occupancy: turning leads into residents

Jac Owen, Managing Director, Connect Studio

10:55 - 11:25

Thriving in social care: a proven system for getting results

Geoffrey Cox, CEO, Eden Alternative UK

Sponsored by: Eden Alternative



11:35 - 12:05

Smart savings: cutting costs with mindful energy and waste management

Jeremy Carter, Company Director, Carter Energy Consulting

12:15 - 12:45

How care providers can turn their website, AI, and digital marketing into a growth engine

Will Roberts, Founder, WebBox

Sponsored by: WebBox



12:55 - 13:25

Ready, set, sell! Preparing your care business for sale

Paul Birley, Advisor to the Board, Fulcrum Care
Martin Gould, Head of Brokerage, Christie & Co
Jade Kent, Healthcare Partner, Stephens Scown LLP

13:35 - 14:20

Maximising your sales performance: actionable insights from sector leaders

Chair - Lisa Vile, Head of Sales & Customer Experience, Prosperwell
Stephanie Bowie, Head of Sales, Signature Senior Lifestyle
Sarah Croxtall, Group Sales and Marketing Manager, Porthaven Care Homes
Liz Patrick, Group Admissions Manager, Stow Healthcare Group
Louise Blezzard, Founder & CEO, Venelle

14:30 - 15:00

Care Innovation Challenge Final

Beverly Futtit, Digital Transformation Lead, National Care Forum

15:10 - 15:40

How to prepare care staff for a CQC inspection

Louie Werth, Director, Care Research

15:40 - 15:45

Chair's closing remarks

Amy Ralston, Associate, Stephens Scown LLP

TECHNOLOGY THEATRE

Sponsored by:



10:10 - 10:15

Chair's opening remarks

Dr Caroline Green, Director of Research, Institute for Ethics in AI, University of Oxford

10:15 - 10:45

Practical use of AI in care

Chair - Daniel Casson, Digital Transformation Advisor, Casson Consulting
Alyson Mckechnie Vale, Business and Operations Director, Abbotsford Care Ltd
Peter Otto, Chief Product Officer, Sentai.ai
Shane Sheehan, Lecturer, University of Edinburgh
James Maynard, Product Marketing & Commercial Director, The Access Group
Manny Joshi, Managing Director & Registered Manager, Caring Care

10:55 - 11:25

Staff savings: what tech can I use to streamline costs?

Chair - Neil Eastwood, Founder & CEO, Care Friends
Ian McMullon, Divisional Director of Care, The Access Group
Veronica Anthony David, Director of People & Organisation Development, Avante Care & Support
Emma-Jane Tinkler, Programme Manager, HC-One
Sophia Harris, CEO, Contesto

11:35 - 12:20

Bridging the gaps: improving interoperability of digital care systems

Chair - Katie Thorn, Project Lead, Digital Care Hub
Harvey Neve, Director: Digital Data & Technology, HC-One
James Maynard, Product Marketing & Commercial Director, The Access Group
Sangha Chakravarty, Founder & CEO, InvictIQ
John Powell, Director, Unicare, Devon
Ian Binks, Business Development Director - Digital Care Records, Orion Health

12:30 - 13:00

A new dawn in care where technology, heart, and humanity walk hand in hand

Harj Nanuwu, CEO, Value Added Business Solutions Ltd
Neemat Sadiq, CEO, Empathika and Langdale Care Homes
Luca Licata, CTO, Empathika
Sibtain Nandji, Director of Pharmaceutical Compliance and Clinical Risk Management, Langdale Care Homes
Amaan Sadiq, Director of Compliance and Auditing, Langdale Care Homes
Sponsored by: Empathika



13:10 - 13:40

Discovering data: the adult social care testbed

Beverly Futtit, Digital Lead, National Care Forum
Dr Annemarie Naylor MBE, Director of HealthTech and Innovation Growth, University of Liverpool
Andrew Jones, Director of Care and Welfare, Nautilus
Kim Smith, Associate Director of Operations, Making Space
Rachel Horton, Regional Head of Operations, Making Space
In partnership with: National Care Forum



13:50 - 14:35

Outside inspiration: what can social care learn from digitally-evolved sectors

Chair - Daniel Casson, Digital Transformation Advisor, Casson Consulting
Howard Charles Allen, Founder, HealthMoni
Paul Cusworth, Business Systems Manager, Wirral Council
Philip Daffas, CEO & Managing Director, PainChek
Manny Sehra, Colleague Communications Manager, Virgin Money

15:25 - 15:55

Exploring proactive and preventative TEC services: actionable insights

Rupert Lawrence, Head of Connect, Medequip Connect

15:55 - 16:00

Chair's closing remarks

Dr Caroline Green, Director of Research, Institute for Ethics in AI, University of Oxford

DESIGN, BUILD & ENVIRONMENTS THEATRE

Sponsored by:



10:15 - 10:45

Colour & contrast: designing dementia-friendly environments that work

Dawn Scott, Senior Colour Designer, Dulux Trade
Sponsored by: Dulux Trade



10:55 - 11:25

Converting former care homes to serve a different model of care

Chair - Russell Pillar, Interiors Consultant/Director, Interiors by Amara Hammond
Daniel Mazure, Director, Empowered Homes
Melissa Magee, Managing Director & Architect, Carless + Adams
Daniel Wiley, CEO, Calm Futures
Peter Scholes, Associate Director, Colliers

11:35 - 12:05

Session sponsored by Gainsborough Healthcare Group

Sponsored by: Gainsborough Healthcare Group



12:15 - 13:00

How can all the differing later living accommodation models meet the needs of the ageing UK population?

Melissa Magee, Managing Director & Architect, Carless + Adams
Jamie Braganza, Partner, Carless + Adams
Sponsored by: Carless + Adams



13:10 - 13:40

Lighting and wellbeing in care: evidence and experience

Dr Shelley James, The Light Lady, Age of Light Innovations
Jo Cheshire, Director of Marketing and Communications, WCS Care

13:50 - 14:35

Green flags: a buyer's guide to viewing care homes

Chair - Nattalie Rooney, Head of Projects, Interiors by Amara Hammond
Nick Somani, CEO, Kara Healthcare
Johann Van Zyl, Co-Founder, Fortava Healthcare
Issac Theophilos, Care Home Business Strategist, Bliss Care

14:45 - 15:15

Getting outdoor spaces right: design, use, and impact

Chair - Debbie Carroll, Director & Author, Step Change Design Ltd
Jane Humphreys, Manager, Chirk Court Nursing Home
Richard Eccleston, Founder & Managing Director, Outwood Care

Floorplan

Care Keynote Theatre

Stand: T9 ●

Carin

Business Theatre

Stand: T7 ●

People, Workforce
and Wellbeing Theatre

Stand: T3 ●



B11
Digital
Care Hub -
Your digital
questions
answered

IN06
Canydon

IN07
Software

IN08
Amenet

IN09
Whizan

IN10
MEXCO
UK

IN11
Healthdigi

IN12
Technology &
Business Solutions

IN13
Online

IN14
Rochester
PBS

IN15
Circulium

IN16
Circulium

IN17
Circulium

IN18
Circulium

IN19
Circulium

IN20
Circulium

IN21
Circulium

IN22
Circulium

IN23
Circulium

IN24
Circulium

IN25
Circulium

IN26
Circulium

IN27
Circulium

IN28
Circulium

IN29
Circulium

IN30
Circulium

IN31
Circulium

IN32
Circulium

IN33
Circulium

IN34
Circulium

IN35
Circulium

IN36
Circulium

IN37
Circulium

IN38
Circulium

IN39
Circulium

IN40
Circulium

IN41
Circulium

IN42
Circulium

IN43
Circulium

IN44
Circulium

IN45
Circulium

IN46
Circulium

IN47
Circulium

IN48
Circulium

IN49
Circulium

IN50
Circulium

IN51
Circulium

IN52
Circulium

IN53
Circulium

IN54
Circulium

IN55
Circulium

IN56
Circulium

IN57
Circulium

IN58
Circulium

IN59
Circulium

IN60
Circulium

IN61
Circulium

IN62
Circulium

IN63
Circulium

IN64
Circulium

IN65
Circulium

IN66
Circulium

IN67
Circulium

IN68
Circulium

IN69
Circulium

IN70
Circulium

IN71
Circulium

IN72
Circulium

IN73
Circulium

IN74
Circulium

IN75
Circulium

IN76
Circulium

IN77
Circulium

IN78
Circulium

IN79
Circulium

IN80
Circulium

IN81
Circulium

IN82
Circulium

IN83
Circulium

IN84
Circulium

IN85
Circulium

IN86
Circulium

IN87
Circulium

IN88
Circulium

IN89
Circulium

IN90
Circulium

IN91
Circulium

IN92
Circulium

IN93
Circulium

IN94
Circulium

IN95
Circulium

IN96
Circulium

IN97
Circulium

IN98
Circulium

IN99
Circulium

IN100
Circulium

IN101
Circulium

IN102
Circulium

IN103
Circulium

IN104
Circulium

IN105
Circulium

IN106
Circulium

IN107
Circulium

IN108
Circulium

IN109
Circulium

IN110
Circulium

IN111
Circulium

IN112
Circulium

IN113
Circulium

IN114
Circulium

IN115
Circulium

IN116
Circulium

IN117
Circulium

IN118
Circulium

IN119
Circulium

IN120
Circulium

IN121
Circulium

IN122
Circulium

IN123
Circulium

IN124
Circulium

IN125
Circulium

IN126
Circulium

IN127
Circulium

IN128
Circulium

IN129
Circulium

IN130
Circulium

IN131
Circulium

IN132
Circulium

IN133
Circulium

IN134
Circulium

IN135
Circulium

IN136
Circulium

IN137
Circulium

IN138
Circulium

IN139
Circulium

IN140
Circulium

IN141
Circulium

IN142
Circulium

IN143
Circulium

IN144
Circulium

IN145
Circulium

IN146
Circulium

IN147
Circulium

IN148
Circulium

IN149
Circulium

IN150
Circulium

IN151
Circulium

IN152
Circulium

IN153
Circulium

IN154
Circulium

IN155
Circulium

IN156
Circulium

IN157
Circulium

IN158
Circulium

IN159
Circulium

IN160
Circulium

IN161
Circulium

IN162
Circulium

IN163
Circulium

IN164
Circulium

IN165
Circulium

IN166
Circulium

IN167
Circulium

IN168
Circulium

IN169
Circulium

IN170
Circulium

IN171
Circulium

IN172
Circulium

IN173
Circulium

IN174
Circulium

IN175
Circulium

IN176
Circulium

IN177
Circulium

IN178
Circulium

IN179
Circulium

IN180
Circulium

IN181
Circulium

IN182
Circulium

IN183
Circulium

IN184
Circulium

IN185
Circulium

IN186
Circulium

IN187
Circulium

IN188
Circulium

IN189
Circulium

IN190
Circulium

IN191
Circulium

IN192
Circulium

IN193
Circulium

IN194
Circulium

IN195
Circulium

IN196
Circulium

IN197
Circulium

IN198
Circulium

IN199
Circulium

IN200
Circulium

IN201
Circulium

IN202
Circulium

IN203
Circulium

IN204
Circulium

IN205
Circulium

IN206
Circulium

IN207
Circulium

IN208
Circulium

IN209
Circulium

IN210
Circulium

IN211
Circulium

IN212
Circulium

IN213
Circulium

IN214
Circulium

IN215
Circulium

IN216
Circulium

IN217
Circulium

IN218
Circulium

IN219
Circulium

IN220
Circulium

IN221
Circulium

IN222
Circulium

IN223
Circulium

IN224
Circulium

IN225
Circulium

IN226
Circulium

IN227
Circulium

IN228
Circulium

IN229
Circulium

IN230
Circulium

IN231
Circulium

IN232
Circulium

IN233
Circulium

IN234
Circulium

IN235
Circulium

IN236
Circulium

IN237
Circulium

IN238
Circulium

IN239
Circulium

IN240
Circulium

IN241
Circulium

IN242
Circulium

IN243
Circulium

IN244
Circulium

IN245
Circulium

IN246
Circulium

IN247
Circulium

IN248
Circulium

IN249
Circulium

IN250
Circulium

IN251
Circulium

IN252
Circulium

IN253
Circulium

Stand: C55 ●

Stand: T1 ●

Stand: B10 ●

Design, Build and Environments Theatre

**Speaker Lounge
/ Apetito**

Stand: N70 ●



Homecare Theatre
Stand: T2 ●

Care Innovation Challenge

Stand: D13 ●

**Care Show
Carousel**
Stand: N12 ●



Welcome to The Outstanding Society Learning Lounge!

Joining The Outstanding Society Learning Lounge at Care Show Birmingham provides a unique opportunity to gain invaluable insights and inspiration from exemplary care providers.

Here you will have the chance to interact with care providers who have not only received outstanding ratings from the Care Quality Commission (CQC) but have also excelled in maintaining and improving their standards. These industry leaders will share their success stories, detailing the specific practices, methodologies, and approaches that propelled them to achieve the esteemed outstanding rating. Through engaging discussions, workshops, and interactive sessions, you'll have the opportunity to delve into the nuances of what makes a care service outstanding.



THE OUTSTANDING SOCIETY LEARNING LOUNGE WEDNESDAY 8 OCTOBER

10:15 - 11:00

Opening act: setting the scene with the CQC

James Rycroft, Director & Managing Director, The OS & Vida Healthcare
Zoe Fry, Director, The Outstanding Society
Samantha Crawley, Director & CEO, The OS & EQ Care Group
Sanjay Dhrona, Director, The OS
Ruth French, Director, The OS
Caroline Cosh, Director, The OS & Clifton Home Care
Lara Bywater, Director, The OS & LDC Care
Chris Badger, Chief Inspector of Adult Social Care and Integrated Care, Care Quality Commission

11:30 - 12:00

From data to dignity: research-driven care with a CQC lens

Zoe Fry, Director, The Outstanding Society
Caroline Cosh, Director, The OS & Clifton Home Care
Michelle Tennant, Clinical Governance Lead, Home Instead
Kate Meacock, Campaigner, Rights for Residents
Dr Zena Aldridge RMHN MA QN FRSA, Associate Director for Social Care, NIHR
Jo Wallace, Senior Specialist - Adult Social Care, Care Quality Commission
Mike Slator, Project Support Specialist, The OS

12:30 - 13:30

Brains and bots unplugged: AI, social care, and CQC in conversation

Ruth French, Director, The OS
James Rycroft, Director & Managing Director, The OS & Vida Healthcare
Lara Bywater, Director, The OS & LDC Care
Sanjay Dhrona, Director, The OS
Katie Thorn, Project Lead, Digital Care Hub
Jon Taylor, Divisional Director, Head of Corporate Risks, Health & Care, Howden Group
Mike Slator, Project Support Specialist, The OS
Rob Hargreaves, Central Engagement Lead, Skills for Care
Kehan Zhou, CEO, Camascope
Moritz Flockenhaus, Regulatory Policy Manager and Specialist in Regulation of AI and Technology, CQC
Sudha Regmi, Director of Data and AI, Nourish Care

14:00 - 14:30

What nearly happened: spotting risk and learning fast

Samantha Crawley, Director & CEO, The OS & EQ Care Group
Lara Bywater, Director, The OS & LDC Care
Caroline Cosh, Director, The OS & Clifton Home Care
Debbie Ho, Inspector, CQC
Rob Hargreaves, Central Engagement Lead, Skills for Care
Mike Slator, Project Support Specialist and Pharmacist, The OS

15:00 - 16:00

The Out Standing Diversity Forum (OSDF) Roundtable

Sanjay Dhrona, Director, The OS
Zoe Fry, Director, The OS
Lara Bywater, Director, The OS & LDC Care
Includes Special Guests

THE OUTSTANDING SOCIETY LEARNING LOUNGE THURSDAY 9 OCTOBER

11:30 - 12:00

From burnout to balance: understanding pressure from all angles

Caroline Cosh, Director, The OS & Clifton Home Care
Kate Meacock, Relative and Campaigner, Rights for Residents
Karen Hedger, Director, Bright Selection
Professor David Sheard, Professor of Emotional Intelligence in Care, Institute for Health & Care Improvement, School of Science, Technology & Health, York St John University
James Rycroft, Director, The OS & Vida Healthcare

12:30 - 13:00

From grit to gritty: winter pressures and continuity plans

Caroline Cosh, Director, The OS & Clifton Home Care
Lara Bywater, Director, The OS & LDC Care
Rob Hargreaves, Central Engagement Lead, Skills for Care
Sanjay Dhrona, Director, The OS
Sabrina Meetaroo, Associate Director, Howden Group

13:30 - 14:00

No more dress rehearsals: why inspection readiness shouldn't be a performance

Ruth French, Director, The OS
Lara Bywater, Director, The OS & LDC Care
Rob Hargreaves, Central Engagement Lead, Skills for Care

14:30 - 15:00

The final curtain: closing thoughts and future visions with the CQC and the OS team

James Rycroft, Director & Managing Director, The OS & Vida Healthcare
Zoe Fry, Director, The OS
Sanjay Dhrona, Director, The OS
Ruth French, Director, The OS
Caroline Cosh, Director, The OS & Clifton Home Care
Lara Bywater, Director, The OS & LDC Care
Chris Day, Director of Engagement, Care Quality Commission





RETIREMENT LIVING SHOW

Creating independence for senior living

Sponsored by:



Welcome to the Retirement Living Show!

The Retirement Living Show is designed for those in the sector to network with fellow professionals and stay up to date on the latest trends, priorities, and directions across the retirement living landscape.

Our Retirement Living Stage boasts 8+ hours of in-depth updates from sector experts, designed to provide the latest guidance on tackling key challenges. With sessions covering leasehold and tenure reform, occupancy challenges, lifestyle and activities, serving the middle market, and so much more, don't miss out on the latest from our exciting line-up of speakers.

RETIREMENT LIVING STAGE WEDNESDAY 8 OCTOBER

10:15 - 10:20

Chair's opening remarks

Sarina Kaiyani, Policy & External Affairs Manager, ARCO

10:20 - 10:50

The Pippa stove monitor: preventing kitchen fires to protect residents and properties

Samuel Bailey, Director, Pippa Technologies Ltd

Sponsored by: Pippa



11:00 - 11:30

What's new in specialised dementia care?

Michael Wilkes-Spellman, Dementia & Mental Wellbeing Lead, ExtraCare Charitable Trust

11:40 - 12:25

How do you make care a choice move?

Melissa Magee, Managing Director & Architect, Carless + Adams
Bhavna Keane-Rao, Health & Social Care Consultant, BKR Care Consultancy
Louise Blezzard, Founder & CEO, Venelle
James Grant, Development Director, Cinnamon Care Collection

Sponsored by: Carless + Adams



12:45 - 14:10

Retirement Living Awards

14:35 - 15:05

Leasehold reform: navigating the latest updates

Sarina Kaiyani, Policy & External Affairs Manager, ARCO

15:15 - 15:45

Acoustic accessibility: ensuring correct provision in retirement living settings

Pritesh Nathwani, Director/Owner, Symphony Sound
Paul Tisdale, Director of Innovation, St Monica Trust

15:55 - 16:40

Winning strategies: tackling key occupancy challenges

Ali Powell, CEO & Founder, Commercial Acceleration
Piers Du Boulay, Head of Leasing, Birchgrove
Philippa Kellar, Managing Director, Richmond Villages (& BUPA)
Amanda Nesbitt, Sales & Marketing Director, Richmond Villages (& BUPA)

16:40 - 16:45

Chair's closing remarks

Sarina Kaiyani, Policy & External Affairs Manager, ARCO

RETIREMENT LIVING STAGE THURSDAY 9 OCTOBER

10:15 - 10:20

Chair's opening remarks

Sarina Kaiyani, Policy & External Affairs Manager, ARCO

10:20 - 10:50

Session sponsored by Gainsborough Healthcare Group

Sponsored by: Gainsborough Healthcare Group



11:00 - 11:30

What are Integrated Retirement Communities?

Sarina Kaiyani, Policy & External Affairs Manager, ARCO

11:40 - 12:25

More than a place to live: the importance of lifestyle and activities in retirement living settings

Liz Fairbank, Care & Lifestyle Director, McCarthy Stone
James Hilton, Founder, Jim's Gym - Online Gym & Community
Kate Jarvis, Wellbeing Lead, ExtraCare Charitable Trust

13:15 - 13:45

Tenure reform: what's changing for retirement living?

Sally Ireland, Director of Legal & Compliance & Company Secretary, ARCO
Sarina Kaiyani, Policy & External Affairs Manager, ARCO

13:55 - 14:40

Collaborate not compete: using shared data to progress

Ali Powell, CEO & Founder, Commercial Acceleration
Nick Hickman, Head of Marketing, ExtraCare Charitable Trust

14:50 - 15:35

What can the later living sector learn from implementing AI in the public sector?

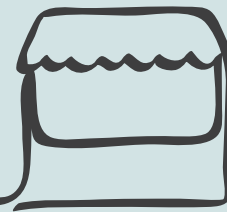
Elliot Mandy, AI Product Owner, Capgemini

15:35 - 15:40

Chair's closing remarks

Sarina Kaiyani, Policy & External Affairs Manager, ARCO

A-Z Exhibitors



Must See Exhibitors highlighted in purple!

3ET.co.uk
Emergency Evacuation Equipment & Training

3ET.CO.UK

F12

9Solutions
Helping to care

9Solutions

C11

AA Euro
HEALTHCARE

AA Euro Healthcare

H15

ABILIA

Abilia

J52

access

Access

H40

Accora

Accora

B30

acticare

Acticare

K55

adapt care

Adapt Care

C10

aidacare™
HEALTHCARE EQUIPMENT

Aidacare

C35

Alert-iT
Care Alarm Technology

Alert-iT Care Alarms

J52

ally

Ally Cares

K42

alsico®

Alsico UK

M45

ALTURA
learning

Altura Learning

H75

Alzheimer's Society

Alzheimer's Society

F11

amazon business

Amazon Business

B42

AMETHYST
CLINICAL EDUCATION

Amethyst Clinical Education

IN02

ANGEL CARE GROUP
Care Tailored To Suit Your Needs

Angel Care Group

G01

apetito

WILTSHIRE
EST. FARM 1881
FOODS

apetito

N70

ARCADIAtextiles

Arcadia Textiles

D41

arjo
EMPOWERING MOVEMENT

Arjo

L10

arquella
Capturing moments of care

Arquilla

E15

ASKO

Asko Professional

G10

ASTON BROOKE
SOLICITORS

Aston Brooke Solicitors

B45

astor bannerman
beyond routine

Astor Bannerman

E35

ATADesigns
Wall Coverings • Murals • Fabrics

ATADesigns & Wallsmiths Wallpapers

C79

Attends

Attends

H20

Ausmed

Audmed

IN08

BAC
FLOORING
& CERAMICS

BAC Flooring & Ceramics

R19

BAXI

Baxi

E12

BAXTER

Baxter Environmental

L25

beam

Beam

M31

B
Bespoke
Bids

Bespoke Bids

O53

BidElevate

BidElevate

H06

birdie

Birdie

K30

Join the conversation:
#CareShow25

 @CareShow
  @CareShows
  /Care-Show
  @careshows
  @care.show



Blaucomm L40



BlazeMaster N23



Blueleaf Care E55



Boots Care Services D40



borderless H59




Bramblecrest L21




Breis CHMS O41




Brewers Decorator Centres M26




Britannia Fire H51



Butternut Box / Marro N32



CACI M12



Camascope J40



Care Activity M56

Download the official Care Show Birmingham app!

Have everything in the palm of your hand with the Care Show app.

The official app allows you to:

- Build your own schedule of sessions
- Explore the products and solutions of 300+ exhibitors
- Network with 4,500+ care professionals
- Schedule time for meetings with suppliers, speakers and other attendees
- Explore the floorplan



Download on the
App Store



GET IT ON
Google Play

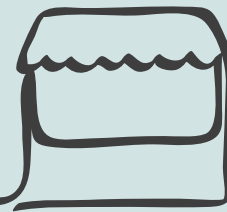
How to access the app:

You will have received an email when you registered for the event. Find the email and click the magic link inviting you to join the app. You can now create a password and complete your profile.

Available to download on Apple & Google Play Stores -
 Search for the "Care Show", or scan the QR code



A-Z Exhibitors



Must See Exhibitors highlighted in purple!



Care at Call J33



Care Control J45



Care England B36



Care Hires G57



Care Home Management D12



Care Innovation Challenge D13



Care Management Matters/Care Choices D03



Care Quality Pharmacy K01



Care Safety Innovations D20



Care Sector Events B47



Care Vision AI L45



Carebase L54



CareCubed B36



CareDocs F20



carehome.co.uk and homecare.co.uk D42



CareHomeLife L20



CareLineLive F25



Carelybot IN06



CareMeds L35



Carerwise IN01



CareTutor L52



Carless + Adams Architects R30



Centrim Life J53



Checkmate Software IN07



Christie & Co M20



Circadacare IN03



circle.cloud F46



Clearcare Solutions J32



Cliniwaste R33



Confident Competence O45



Conteur D31



CoolCare G51



Correct Care Training E33



CorrMed F70

Join the conversation:
#CareShow25

 @CareShow
  @CareShows
  /Care-Show
  @careshows
  @care.show



Countrywide Healthcare Supplies **E20**




CQC **K50**




Croner-i **J51**




Danfloor UK **O30**




DDC Dolphin **E70**



Dementia Educators **H07**



Deputy **C52**



Digital Care Hub **B11**
Your digital questions answered



Dispensing Centre Ltd **J01**



Duckworth Group **B51**



Dulux Trade & Decorator Centre **R20**



Dunelm Group PLC **C12**



Meal Delivery Trolleys – Making it easy to serve food anywhere!




Mobile unit with heated or refrigerated compartments

Choice of 4 models

Integrated HACCP data gathering IOT connectivity

Operate Cook / Chill simultaneously

Hot top & gantry for heated serving

Instant HACCP recording & reporting

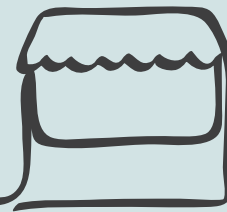
Coloured LED mode indicator

Easy to use touch screen controls packed full of features

Find out more at
www.FalconFoodservice.com/healthcare



A-Z Exhibitors



Must See Exhibitors highlighted in purple!



Eden Alternative UK M55



Edinburgh Weavers N22



Edison & Day N30



Elis H70



Empathika C33



Envirisk R44



Envision Communications Group Ltd K02



Epic Solutions D11



Eureka Capital Allowances D33



Euroservice Trolley Manufacturers J70



Evondos Group C32

PureV by Fairfield Care

Fairfield Care K15



Fairway Training L57



Falcon Foodservice Equipment M25



FamileoPro M21



FaultFixers C45



Fixxon M11



Florence J35



Flourish L33



Found CRM G20



Fowler G02



Friendly Shoes D52



Furncare M30



Furniture Resource Centre E14



Fusion Care Management Software G25



Gainsborough Healthcare Group G12



Gather R25



Gompels Healthcare F13



Goodwyn Herrera Solicitors H10



Granguard E09



Green Power L41



Green Thumb C51



Greetwell Purchasing Solutions B55

Join the conversation:
#CareShow25

 @CareShow  @CareShows  /Care-Show  @careshows  @care.show



H2O Hygiene D70



HAIGH O48



Harbour ATS E10



Healthdaq® C77



Healthy Estates F73



Homecare Lounge F01
by Homecare Association



HomeSight E31
by Vantiva



Howden Insurance C13
Brokers



HxCare G50



Ice O40
Telecommunications



ILECS Lift & Escalator O52
Consultants



ILIV Contract Fabrics N27



imesa UK G10



Immigration N55
Advice Service



Impact Futures F02



Inclusive Design D51
Magazine



Infrared Group O35



Integrex Limited H76



Interiors by N70
Amara Hammond



JE-Consulting G52



Legrand Care J10



Lester Aldridge B43



Level FT B46



Lifestyle Gift Cards C56



Lifted Talent E16



Lilli K72



Little Islands C15



Lumio R21



M&M Artwork F71
& Mirrors



Macmillan Cancer D37
Support



Marie Curie G70

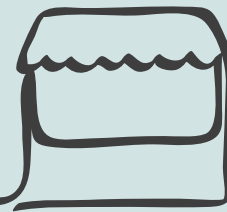


Mash Group E32



MDT Online IN05

A-Z Exhibitors



Must See Exhibitors highlighted in purple!

Me Confy™

Me Confy B20



MED e-care M02



Medbed Healthcare J09



Medecins Sans Frontières (MSF) C21



Medicare Systems D35



Medicine drop H11



Medline Consultancy M10



MEIKO UK IN10



Miigen - Your Family Digital Time Capsule L72



Milbotix O34



Mitre Linen H50



MLF Productions Ltd E11



MOA Benchmarking H21



Mobility Hire B15



My Homecare Ltd B12



My Learning Cloud N35



My Purchasing Partner E30



Myako M57



Neta S.R.L. D43



NHC Group L30



Nobi C53



Nourish Care G40



Oasis Bars J72



One Stop Business Energy L51



OneAdvanced L50



OneTouch Health K20



Ontex Healthcare UK J15



Orbital Net Ltd B36



Orchard Rock Training N24



Outreach Staffing Solutions R29



Outwood Care N21



Oxygen Installations H12



peopleoo R50



P J Bridgman & Co B23

Find us on
Stand
D35

medicare SYSTEMS

Nurse Call Specialists

GROUND FLOOR 001
CALL
BEDROOM 00:07

Staff
identification
and safe
guarding



Cloud based
call
management
software

Medicare's nurse call systems encompass a wide range of tools and solutions designed to improve the quality of care delivered to patients & residents.

Easy to use
wireless
technology

Network
compatible
devices

Nurse call
application
for mobile
devices

24 hour
technical &
online
support

To find out how Medicare Systems can help you, call us today on

0800 849 5123

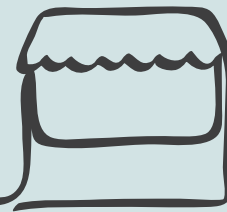
or visit our website

www.medicaresystems.co.uk



SCAN ME

A-Z Exhibitors



Must See Exhibitors highlighted in purple!



Painchek J30



Pass E40



PBS Matters H05



Person Centred Software K40



Personal Group N25



PillSorted H52



PJ Care Ltd L59



PKF Smith Cooper Systems G54



Planday B21



Platform MedTech D09



Plexus Support Services C42



Possum N50



PredicAire F40



Premier Vanguard G55



Pressure Care Management Ltd B48



QCS J20



Quality Assured Care Services N42



RA Accountants LLP L55



Radar Healthcare F52



Ravencourt M13



Reco Surfaces J75



Redstone PBS IN04



Reed.co.uk O31



Rosa Lifestyle D36



Royal College of Nursing C43



RTM Group G03



Safety Net Home Solutions O43



Safety Systems Distribution L13



Salisbury Support 4 Autism R31



Satellite Finance K70



SCNACS B10



Screwfix N20



Scrubs UK L70

Join the conversation:
#CareShow25

 @CareShow
  @CareShows
  /Care-Show
  @careshows
  @care.show



SeeMeHired M75



Sensio Care J50



Sensore by Graphene Trace M35



SES Computers E01



Sherwood Training IN10



Skopos Fabrics B50



Snopake Brands R49



Softworks D30



Solar4Good UK B53



Spark Care J55



Spearhead F45



Staff Savvy M50



Steer IT Solutions H09



Still Skills For Life D07



Sunrise Facilities Management M43



Swift Management R51




Switch Squid R32




Syncurio K45



t&s creative communications L71



T2 Group F75



Tails.com C20



Tapi Carpets & Floors C12



Taylor & Pickles F72



Tecnitrano UK D55



The Care Home Environment O32



The Care Workers' Charity B24



The Carer L56



The Health & Safety Group O50



The Penderels Trust M53



The University of Edinburgh B54



Top Medics H14



Touchscreen Company D32

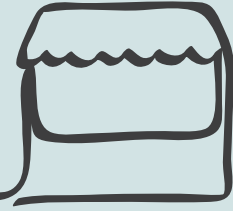


Towergate Insurance J79



Tribepad D75

A-Z Exhibitors



Must See Exhibitors highlighted in purple!



Trinity Mortgages K75



TrustedCare / CareHQ H25



Tympa Health B36



Unique IQ G22



University of East Anglia O44



Verso Vision D10
represented by Aureum
Care Technologies



ViClarity M70



Ward Hadaway C54



WASHCO M40



WebBox B41



Well Pharmacy R40



Whiteoaks D57



Whzan IN09



Wiltshire Farm Foods Professional M51



Wolf Laundry K10



Wood ITC B36



workforce.com D45



Worknest R34



Workwear Online J07



Wuva B52



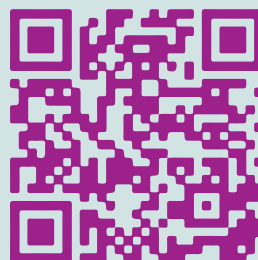
WV Howe Ltd H72



Zeal Tax B56

Download the official show app!

Scan to download





SCIENCE. SERVICE. SAFETY.

Protecting What Matters Most



Complies with UK,
European, and global
fire safety standards



Safeguards care homes,
hospitals, and schools



Reliably protects
lives and property



Controls fires early,
enhancing safety

✉ blazemaster.emena@lubrizol.com

www.blazemaster.com

[Lubrizol](http://lubrizol.com)



THE ORANGE BOOK

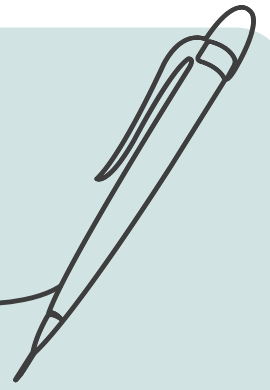
A Guide to Fire Protection Systems

Download your free copy >>



www.blazemaster.com/eu/introducing-blazemaster-fire-protection-systems

Your Notes

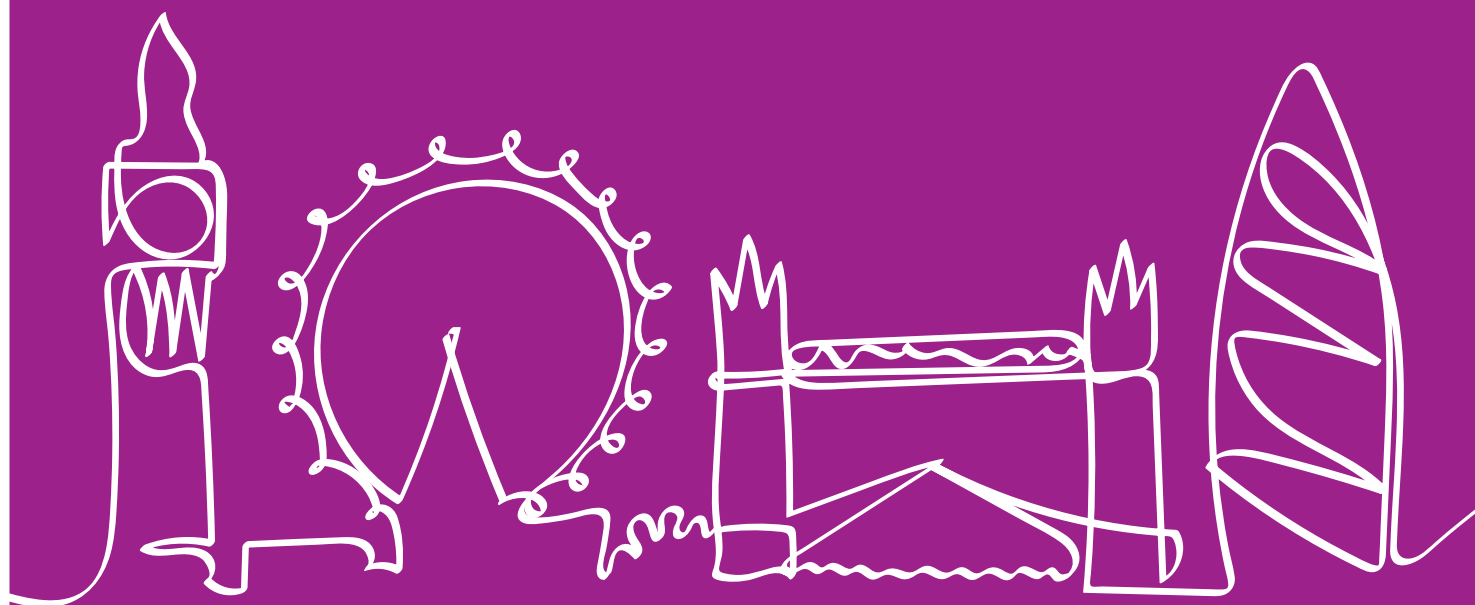


A series of horizontal dotted lines for writing notes, spanning the width of the page.



Building a better future for care

29 - 30 April 2026 Excel London



Care Show London returns to the capital for 2026!

A two-day conference and exhibition boasting the most invaluable learning, networking, and thought-provoking opportunities for those working in the adult social care sector.

29 - 30 April 2026

ExCeL London

Join the conversation:

#CareShow26

 @CareShow  @CareShows  /Care-Show



Register your interest!

Scan the QR code or visit
www.careshowlondon.co.uk

Organised by:  **CloserStill**

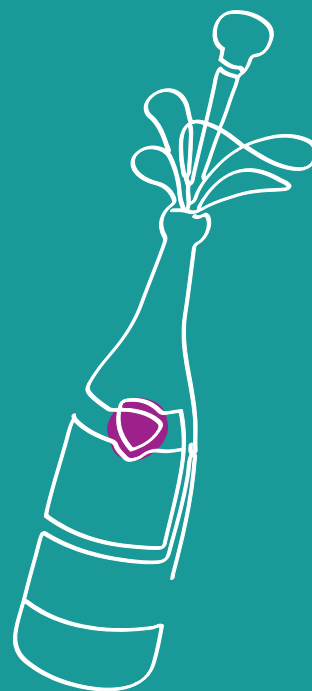
Care Show After Party

Wrap up the first day of Care Show Birmingham 2025 with great vibes, great food and even better company at the Care Show After Party!

After a full-on first day at Care Show Birmingham, it's time to relax, recharge, and reconnect at our first-ever **Care Show After Party** - an evening of **live music, tasty street food, refreshing drinks, and brilliant networking.**

Whether you're a visitor, exhibitor, or speaker, this is your chance to:

- Unwind in a lively, welcoming atmosphere
- Mingle with fellow care professionals and industry leaders
- Soak up the sounds of live music and good conversation



Wednesday 8 October, 17:00 – 22:00
Party Area, Hall 3

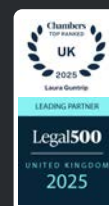


Expert Advice for Health & Social Care Providers

Meet the LA Health & Social Care Team - specialist social care solicitors

We can support you with:

- Advice on compliance with the regulations and registration
- Challenging inspection reports and ratings
- Defending regulatory enforcement action (CQC/Ofsted)
- Criminal investigations and prosecutions (e.g. by police, CQC, etc)
- Safeguarding investigations
- Coroner's inquests
- Funding disputes and unpaid care fees
- Court of Protection cases
- Regulatory due diligence
- Sales, acquisitions and refinancing
- Transactional and commercial services
- Employment and HR services
- Requirements for charities
- Property services, planning and development
- Restructuring



Specialist Solicitors to the Health & Social Care Sector



Please contact our team of experts today
laura.guntrip@LA-law.com

01202 786135
www.lesteraldridge.com



Occupational Therapy Show

26-27 NOV 2025
THE NEC BIRMINGHAM

**REGISTRATION
IS LIVE**

**CONFERENCE
PROGRAMME
IS LIVE**

**POSTER ZONE
IS OPEN**

BRINGING THE OCCUPATIONAL THERAPY COMMUNITY TOGETHER



270+

HEALTHCARE SUPPLIERS WITH THE
MOST EFFECTIVE HEALTHCARE,
DISABILITY & MOBILITY AIDS

100+

CPD ACCREDITED
CONFERENCE SESSIONS

6

EDUCATIONAL THEATRES
WITH COUNTLESS LEARNING
OPPORTUNITIES

2 DAYS

TO MEET, NETWORK AND SHOWCASE YOUR PRODUCTS AND SERVICES TO:
CASE MANAGERS, TEAM LEADS, CLINICAL LEADS, OCCUPATIONAL
THERAPISTS... ALL UNDER ONE ROOF!

REGISTER TO SECURE YOUR PASS TODAY AT:

www.theotshow.com/csbreg

BOOK YOUR STAND TODAY VIA:

www.theotshow.com/csb



Care providers just got AI superpowers

Utilisation



88%

Cancellations



6 hrs

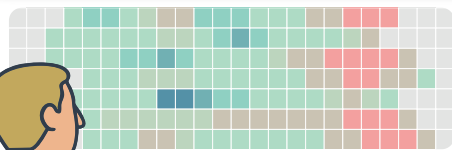
Travel times



8.9%



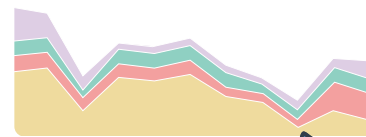
Evenings exceed capacity next week!



Under
Over

Punctuality

Updated | 1m ago



PASSgenius™ gives care providers
instant visibility – helping you to detect
health trends, predict staffing needs,
and keep schedules on track.