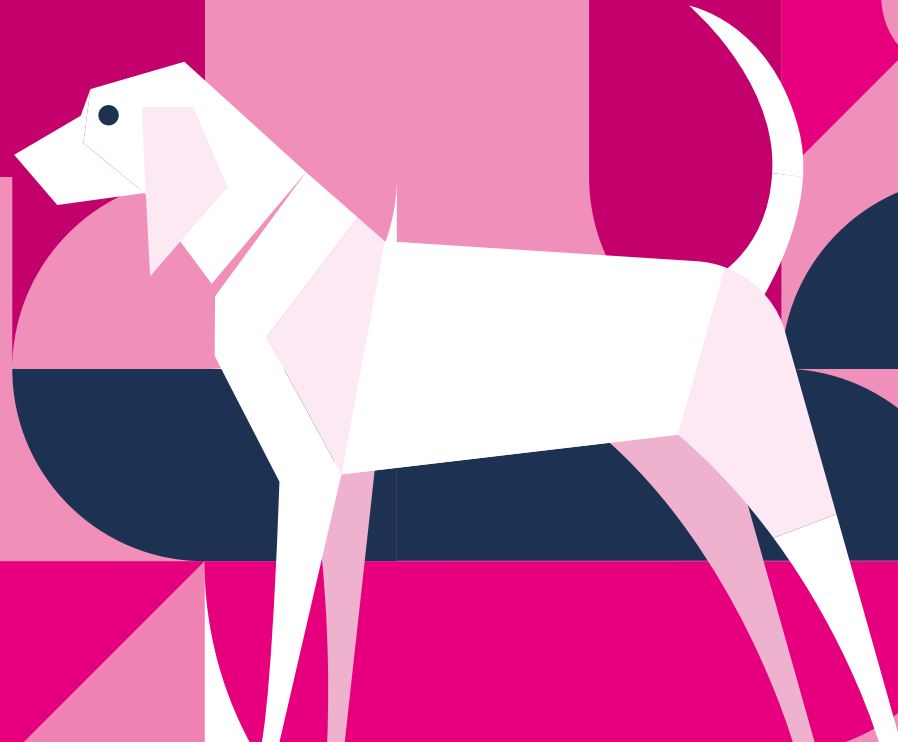
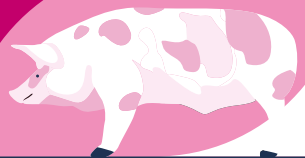


LONDON **VET**  
**SHOW**

EXCEL LONDON • 14-15 NOVEMBER 2024  
LONDON.VETSHOW.COM



**SUSTAINABILITY**

# WHAT

# DO WE DO?



Our commitment to sustainability extends beyond our venue and suppliers. **Here's a glimpse of our initiatives:**



**We recommend using our official event app**, as this greatly reduces the need for printed materials, cutting down on waste and conserving resources. By hosting guides, brochures, and advertisements digitally, we avoid the environmental costs of printing and distribution. This enabled us to print less show guides, flyers and direct mailing brochures and host our proceedings mainly on VIN, only printing a limited amount.

All prints are on FSC Accredited stock paper. We're using bio compostable materials such as potato starch poly wrap for our mailings and packaging.



**Using chocolate at your stand?** Chocolate tubs cannot be recycled like regular plastic, so please bring your empty tubs to our organisers' office at the show. We work with the team at The Old Golf House Veterinary Group for proper recycling, and they ensure the tubs are donated to a local charity, as they cannot be processed through standard domestic recycling methods.



**Green Travel:** We are partnering with Vet Sustain to encourage you to think greener when it comes to travelling to the London Vet Show this year. Whether it's taking public transport, carpooling, or if you're more local consider walking or cycling, join us in making a positive impact by choosing eco-friendly travel options! Let's arrive with a commitment to sustainability to support a healthier planet.



**Removed single plastic bottles of water for speakers**, instead the theatre managers are given a big bottle and recyclable cups to speakers who wish to drink water. This way we avoid speakers leaving full open bottles behind and wasting the water.



**Reuse of feature and stage decorations that we store in our office.** Stage decorations are stored in our office for reuse purposes and during the event, we use a designated recycling point for decorations to actively encourage and facilitate recycling efforts.



**Our Pink Carpet is Going Green:** Thanks to BOVA UK, our carpet will be recycled through Rewind Carpet [www.rewindcarpet.com/event](http://www.rewindcarpet.com/event)





# OUR VENUE



**Excel London** is proud to be accredited with top environmental certifications, featuring state-of-the-art facilities that optimise energy efficiency and minimise waste. From advanced HVAC systems to energy-efficient lighting, every aspect of the venue is engineered to support a greener future.



## SUSTAINABILITY IN ACTION


-  **Roll out of carbon impact** labelling across our menus
-  **Air freight ban** on all fruit and vegetables outside the UK
-  **Transition to non-dairy** alternatives
-  **London Living Wage guaranteed** for all ELH employees
-  **All single use plastic** bowls and plates replaced with recyclable
-  **100% seasonal sourcing** for all menus



### AS DEFINED BY THE NET ZERO CARBON EVENTS PLEDGE:

- **50% carbon reduction by 2030 (from a baseline year of 2022)**
- **Net zero carbon by 2050 at the latest**
  - Year-on-year reduction in water consumption
  - Year-on-year reduction in waste volume
  - Recycling rate of 75% by 2025
  - Landfill diversion rate of 100%

## VENUE SUSTAINABILITY FEATURES

-  **100% of electricity comes from renewable sources** and all gas is accounted for through Voluntary Carbon Offsets (VCOs)
-  **Home to one of the largest commercial wormeries**, containing 300,000 worms to recycle food waste
-  **A zero waste-to-landfill policy since 2012**, with 71% of waste recycled in 2021 and the remaining 29% used to create refuse-derived fuels
-  **Water fountains installed throughout the venue** which result in 200,000 fewer plastic bottles used every year
-  **The venue's waterless urinals** save enough water to fill 6 Olympic-size swimming pools each year
-  **A living wall along the promenade** has 9,000 plants which remove air pollutants
-  **Used cooking oil is collected for recycling into biofuel.** HVO is used for plant and machinery across the venue which has up to 93% emissions saving compared to white diesel

**More information:** [www.excel.london/visitor/sustainability-and-legacy](http://www.excel.london/visitor/sustainability-and-legacy)

## ANIMAL WELFARE



**25% of the catering menus serve plant-forward, vegan or vegetarian options** and 80% of our menus use British seasonal fruit and vegetables. This not only supports local farmers and reduces our carbon footprint but also ensures that our food is fresh and ethically produced.

- Fish sourced are rated 1-3 in the MCS Good Fish Guide, based on species, location, and method of catch/farming.
- A recent switch from salmon to trout was made due to overfishing concerns.
- All milk is Red Tractor assured, adhering to Dairy Standards.
- A significant proportion of meat is Red Tractor assured, though the license to claim this is not held.
- All beef is sourced from the UK & Ireland.
- 100% of UK eggs (shell and liquid) are cage-free.
- MCS Good Fish Guide 4 and 5 rated fish and seafood products have been removed since 2021.
- Better Chicken Commitment standards are to be met by 2026.
- No routine euthanasia of calves occurs in the milk supply chain.
- Tinned tuna is sourced using pole and line, trolling, and handline methods only to minimize bycatch since 2022.
- Starting 1st January 2024, prawns or shrimp will not be sourced from females that have suffered eyestalk ablation.
- All soya-based animal feed has been covered by RTRS sustainable soy credits since 2021.
- A 25% switch from animal proteins is targeted by 2025 and a 40% switch by 2030.

# OUR SUPPLIERS AND SUSTAINABLE PRACTICES



Partnering with suppliers who share our vision, we ensure sustainability permeates every facet of our operations. **Here's how some of our key partners contribute:**



- **Carpet Recycling:**

- » All standard cord carpets are removed from sites and recycled into plastic pellets for reuse in manufacturing.

- **Rewind Carpet:**

- » Eco-friendly, zero-to-landfill alternative.
- » Reduces carbon emissions by 55% during production.
- » Latex-free and cuts energy consumption by 85% compared to traditional event carpets.
- » Recycled into high-grade mono-recyclate for easier recycling and extended lifecycle.
- » Lighter weight improves delivery capacity and reduces transport emissions.
- » Carbon Calculator: Developed a tool to show CO2 emissions during the manufacturing process, helping clients make informed decisions before ordering.

- **Onsite at ExCeL:**

- » Offices, warehouses, and production facilities are onsite, storing 50% of UK stock.

- » Reduced carbon emissions by 55% by decreasing vehicle usage.

- » Proximity to clients allows for efficient support and last-minute changes without extra transport.

- **New Large Format Graphics Printers:**

- » Advanced LED technology uses less energy and produces less waste.
- » Greenguard inks with lower indoor chemical emissions.

- » Waste Management: Partnered with Reconomy to ensure zero waste goes to landfill.

- **Cradle-to-Gate Assessment:**

- » Conducted on high-carbon materials to guide better purchasing decisions.

- **Electric Forklifts:**

- » 35% of forklifts are now electric, operating with zero emissions.

- **Waste Reduction Initiatives:**

- » Piloting digital platforms for live data streaming and digital floorplan updates.

- **Health & Safety Platform:**

- » Mandatory online H&S training for all employees and subcontractors to ensure a safer work environment.

- **ESG Progress Report:**

- » Created to showcase sustainability achievements and future goals.

- **Sustainable Materials:**

- » Evolving products, including new countertop ranges, recycled graphic panels, and alternative flooring solutions.

- **B Corp Certification:**

- » Working towards certification to demonstrate high levels of environmental stewardship and contribution to the circular economy.

- **FESPA UK Waste Accreditation:**

- » Achieved standards to improve the circular economy and keep materials in use for as long as possible.

**For further information please visit:**

**GES Sustainability**



# OUR SUPPLIERS AND SUSTAINABLE PRACTICES

Partnering with suppliers who share our vision, we ensure sustainability permeates every facet of our operations. **Here's how some of our key partners contribute:**



- Removing 100% single-use plastic packaging, using OXO based plastic, HYDO and biodegradables products. The wood materials that we purchase from meet the requirements of standards FSC STD 40 003 (Version 2.1) EN, FSC STD 40 004 (Version 3.0) EN, FSC STD 40 005 (Version 3.1) EN and FSC STD 50 001 (Version 2.0) EN for FSC® Chain of Custody Certification, as certified by bmrada (see APPENDIX).
- When wood is damaged, it presents an opportunity to breathe new life into the material by downsizing it whenever feasible. This process results in the creation of new furniture that occupies less space within trucks, thereby increasing cargo capacity by 60%.
- Thorns are working toward Euro 6 making all their fleet environmentally friendly.
- Thorns have their water wall spray booth systems and installed new state of the art air fed and filtered systems. This has reduced their waste paint by 80%.
- Thorns uses warehouse and office lighting to PIR LED strips lights, which has offered a reduction of 20% on energy usage in 2019.

For further information please visit:

[Thorns Sustainability](#)



- Minimise the number of trucks required for each event by consolidating AV, set, stage, and furniture onto one truck when possible
- Crew also use public transport where feasible or travel to event sites in crew cars to reduce the number of vehicles
- Invested heavily in state-of-the-art technology, which is more energy efficient, including LED lighting, laser projection, rechargeable digital microphone racks
- Manage and reduce data storage requirements, which in turn reduces associated energy use

For further information please visit:

[PSPAV Sustainability](#)



As a part of the ClearCourse group, Fusion Events is dedicated to not only solving your event management and lead-capture challenges but doing so in a way that prioritises sustainability. Our mission is to help you run better, more eco-conscious events by leveraging cutting-edge technology and sustainable practices.

#### Fusion Events' Sustainable Solutions:

- Cloud-based registration platforms reduce the need for physical infrastructure.
- Mobile lead capture apps eliminate the need for physical materials like scanners and business cards.
- Eco-Friendly Event Materials such as sustainable lanyards and badge holders
- Leftover badge stock is recycled or repurposed.
- API solutions for seamless data sharing reduce physical data transfers.

For further information please visit:

[Fusion](#)