

DELIVERY MANAGEMENT FOR

POSTAL OPERATORS

Easily acquire and grow new eCommerce customers for your postal business



Acquire new eCommerce customers with our white-label delivery management platform

- ✓ Easily acquire and onboard new eCommerce customers
- ✓ Provide your eCommerce customers with an intuitive delivery management platform which is branded by you and powered by Scurri
- ✓ Connect to multiple Warehouse Management Systems, Order Management Systems and eCommerce technology providers via one central platform
- ✓ Enable your eCommerce customers to manage your postal services, products and features through our platform

Easily manage multiple eCommerce customer accounts

Our Parent-Child setup allows you to easily manage your network of eCommerce customers. The (Parent) account is your master account that you use to manage your customers' (Child) accounts.

- ✓ Easily acquire new eCommerce customers and painlessly onboard them to our streamlined platform
- ✓ Customise permission settings to facilitate various levels of control
- ✓ Use shipping rules to decide the most cost effective service for each eCommerce customer
- ✓ Add companies, warehouses, services and shipping rules with ease
- ✓ Removes complexity and automates eCommerce customer management





Value-add features your eCommerce customers will love

Your eCommerce customers will benefit from our best-in-class product, with features that add real value such as:

- ✓ Warehouse integrations
- ✓ Automated carrier selection
- ✓ Configurable rules
- ✓ Bulk printing
- ✓ Shipping from multiple locations
- ✓ Inputting orders from Shopify, WooCommerce, Easily connect your order management platform (big selling point)

Scale your postal volumes with high-growth opportunities

- ✓ Want to partner with another last mile provider or carrier? We can support you with white labelling their services
- ✓ We can support you with onboarding large enterprises including Asian marketplaces, and can accommodate the volumes and demands of these businesses
- ✓ We can support you with your compliance to UPU Standards



Enterprise grade security to protect your operations

Enjoy peace of mind and rest assured that your operations are protected with our robust security protocols

- ✓ 24/7 compliance monitoring to ensure enterprise grade security as standard
- ✓ Complete data encryption for maximum security – whether data is in transit or at rest
- ✓ Cloud based platform ensures ultimate resilience and availability



Gain visibility of your shipments across your entire operations

Continuously monitor, refine and improve your postal operations with our insightful reports

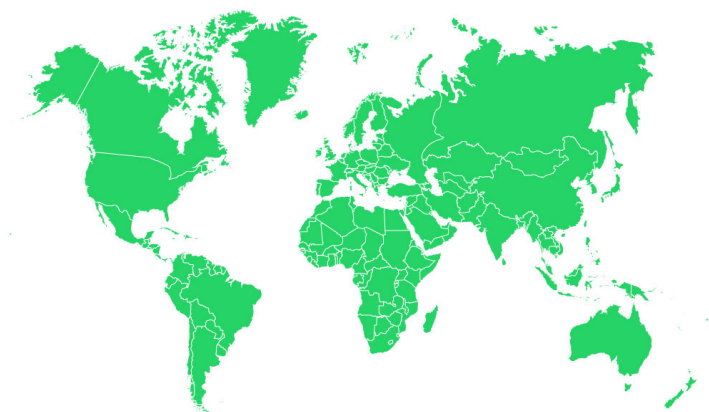
- ✓ Gain comprehensive insights into shipment volume per eCommerce customers to support billing and invoicing
- ✓ Your eCommerce customers have visibility of their own individual shipment volumes and performance data
- ✓ Optimise delivery management performance with actionable insights and meaningful data



International carrier coverage

With international carrier coverage and access to 1,200+ carrier services, our postal and logistics solutions are built to help you scale.

- ✓ Your customers can seamlessly plug in to our network of carriers
- ✓ Easily allocate carriers depending on a range of conditions using our intuitive rules engine
- ✓ Reduce costly carrier errors thanks to our robust integrations
- ✓ Our "Rates" feature helps your customers find the cheapest carrier based on pre-set rules, boosting operational efficiency



Unlock high-volume growth opportunities from Asian marketplaces

- ✓ Scurri actively facilitates shipments from high volume Asian marketplaces to European markets through our custom APIs
- ✓ Our custom APIs and efficient label generation methods currently allow Asian marketplaces to efficiently print labels in China and facilitates their delivery to European markets through domestic postal and logistics providers

Our customisable API gives postal and logistics operators access to the API economy and unlocks new revenue streams from Asia and other markets





Seamless eCommerce integrations

Our integrations open up a world of opportunity for postal and logistics companies who are keen to scale

- ✓ Scurri Connect has integrations with eCommerce technology partners, warehouse management systems and 3PL solutions
- ✓ Efficiently generate labels, remove delivery friction and reduce carrier errors thanks to our robust API technology
- ✓ Reduce manual processes and free up valuable time thanks to our clever automated tech
- ✓ Customers can import shipment information via API, UI and CSV or making use of any of the popular order management systems such as Shopify, WooCommerce, and more
- ✓ We offer coverage across WMS, ERP, OMS integrations and more



Trusted By
**an
post**

15

Years Operational
Experience

154M

Shipments
Connected in 2024

€16.5B

Gross Merchandise Value
Processed in 2024



Secure

Enterprise grade security



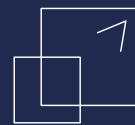
Reliable

99.995% Uptime



Supported

CSAT 98%



Scalable

In-house, future-proof tech





“There is a way of creating a service and customer experience that ensures people know that they matter.

Rory O'Connor, CEO & Founder – Scurri

DELIVERY MANAGEMENT FOR

LOGISTICS OPERATORS

An enterprise-grade platform for logistics operators that's secure and scalable



White-label delivery management platform for Logistics Operators

A modern, secure platform that helps you provide a world class service to your eCommerce customers.

- ✓ Provide your eCommerce customers with an intuitive delivery management platform which is branded by you and powered by Scurri
- ✓ Connect to multiple Warehouse Management Systems, Order Management Systems and eCommerce technology providers via one central platform
- ✓ Enable your eCommerce customers to access a range of attractive carriers and services and print labels / shipping documentation through your branded portal

fastway

ITD
Global

oakland
INTERNATIONAL

ONE WORLD

nivtar

AIR BUSINESS

Easily manage multiple customer accounts

Enjoy peace of mind and rest assured that your operations are protected with our robust security protocols.

- ✓ Easily onboard your eCommerce customers via our streamlined platform
- ✓ Customise permission settings to facilitate various levels of control
- ✓ Use shipping rules to decide the most cost effective service for each customer
- ✓ Add companies, warehouses, carriers and shipping rules with ease
- ✓ Removes complexity and automates customer management





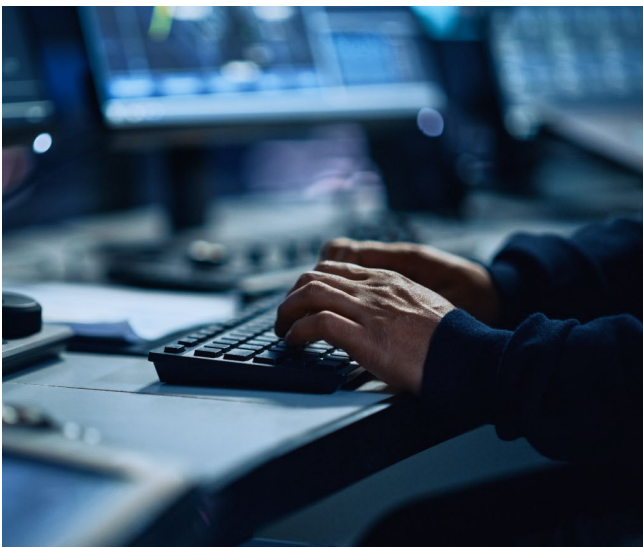
Value-add features your eCommerce customers will love

Your eCommerce customers will benefit from our best-in-class product, with features that add real value such as:

- ✓ Warehouse integrations
- ✓ Automated carrier selection
- ✓ Configurable rules
- ✓ Bulk printing
- ✓ Shipping from multiple locations

Scale your postal volumes with high-growth opportunities

- ✓ Want to partner with specific last mile providers or carriers? We can support you with white labelling their services
- ✓ We can support you with onboarding large enterprises including Asian marketplaces, and can accommodate the volumes and demands of these businesses
- ✓ We can support you with your compliance to UPU Standards



Enterprise grade security that protect your growth

Enjoy peace of mind and rest assured that your operations are protected with our robust security protocols

- ✓ Easily onboard your eCommerce customers via our streamlined platform
- ✓ Customise permission settings to facilitate various levels of control
- ✓ Use shipping rules to decide the most cost effective service for each customer
- ✓ Add companies, warehouses, carriers and shipping rules with ease
- ✓ Removes complexity and automates customer management



Gain visibility of your shipments across your entire operations

Our next-gen reporting dashboards for logistics operators provide you with the information you need to review and improve your operations

- ✓ Gain comprehensive insights into the volume of manifested shipments across your network of eCommerce customers
 - ✓ Your eCommerce customers have visibility of their own individual shipment volumes and performance data
- Optimise delivery management performance with actionable insights and meaningful data



International carrier coverage

With international carrier coverage and access to 1,200+ carrier services, our postal and logistics solutions are built to help you scale.

- ✓ Your customers can seamlessly plug in to our network of carriers
- ✓ Easily allocate carriers depending on a range of conditions using our intuitive rules engine
- ✓ Reduce costly carrier errors thanks to our robust integrations
- ✓ Our "Rates" feature helps your customers find the cheapest carrier based on pre-set rules, boosting operational efficiency

Unlock high-volume growth opportunities from Asian marketplaces

- ✓ Scurri actively facilitates shipments from high volume Asian marketplaces to European markets through our custom APIs
- ✓ Our custom APIs and efficient label generation methods currently allow Asian marketplaces to efficiently print labels in China and facilitates their delivery to European markets through domestic postal and logistics providers

Our customisable API gives postal and logistics operators access to the API economy and unlocks new revenue streams from Asia and other markets





Seamless eCommerce integrations

Our integrations open up a world of opportunity for postal and logistics companies who are keen to scale

- ✓ Scurri Connect has integrations with eCommerce technology partners, warehouse management systems and 3PL solutions
- ✓ Efficiently generate labels, remove delivery friction and reduce carrier errors thanks to our robust API technology
- ✓ Reduce manual processes and free up valuable time thanks to our clever automated tech
- ✓ Customers can import shipment information via API, UI and CSV or making use of any of the popular order management systems such as Shopify, WooCommerce, and more
- ✓ We offer coverage across WMS, ERP, OMS integrations and more

amazon

WooCommerce

PEOPLEVOX

NETSUITE

Brightpearl

shopify

Magento

channeladvisor

15

Years Operational
Experience

154M

Shipments
Connected in 2024

€16.5B

Gross Merchandise Value
Processed in 2024



Secure

Enterprise grade security



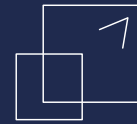
Reliable

99.995% Uptime



Supported

CSAT 98%



Scalable

In-house, future-proof tech

The leading delivery management platform for logistics operators

