

# PARCEL+POSTEXPO

THE PARCEL INDUSTRY INNOVATION HUB

OCTOBER 21, 22 & 23, 2025,  
 RAI AMSTERDAM, NETHERLANDS

# JOIN US AT THE PARCEL INNOVATION HUB

## LEADERSHIP CONFERENCE AND EXPO

A GLOBAL SHOWCASE OF INNOVATION AND DISRUPTION ACROSS  
 THE POSTAL AND LOGISTICS INDUSTRIES, FEATURING AN  
 EXECUTIVE CONFERENCE EXPLORING KEY SECTOR CHALLENGES,  
 A FREE-TO-ATTEND EXPO AND BRAND-NEW INNOVATION LABS

LEADING  
 SOLUTION  
 PROVIDERS

REGISTER NOW FOR YOUR  
 FREE EXHIBITION PASS

[www.parcelandpostexpo.com](http://www.parcelandpostexpo.com)



#ParcelPostExpo



## NEW FEATURES ADDED FOR 2025!

1

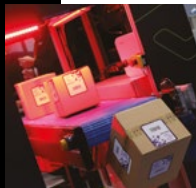
### INNOVATION LABS

ALL FREE TO ATTEND!

This year, the expo has introduced Innovation Labs, which will take place across the show floor. These will give visitors the opportunity to benefit from fireside chats, workshops – and Dragons’ Den-style pitches in the Startup & Innovation Zone. The labs will include...

#### THE AI PARCEL LAB

A dedicated space for AI-driven solutions, helping to transform the parcel, postal and logistics industry. Content will be delivered in the form of workshops, AI learning sessions and meet-the-experts panels.



#### THE STARTUP & INNOVATION ZONE

A launchpad for the next generation of logistics and delivery disrupters – with Dragons’ Den-style pitches presented by startups during the c2p Startup Innovation Award Competition on Day 1. Enhanced for 2025 and free to attend!

#### THE LOCKER ROOM

This lab will host interactive workshops and fireside chats exploring the challenges and opportunities facing the fast-growing last-mile delivery sector.



All the above will take place alongside the exhibition, where you can meet leading solution providers, including Vanderlande, Beumer Group and EAE Solutions – to name just a few! This is your opportunity to see the latest industry developments firsthand

2

### LEADERSHIP CONFERENCE

WHY ATTEND?

Hear observations about the direction of the industry from thought leaders across the postal, parcel and e-commerce sectors.

Connect with the industry’s most influential decision-makers and leave with the contacts that can shape your future and increase your ROI.

See details on  
 page 65



SCAN THE QR CODE  
 TO BOOK YOUR  
 CONFERENCE PASS\*

\*Rates apply

35+  
 SPEAKERS

#### c2p STARTUP INNOVATION AWARD COMPETITION

Day 1, Tuesday,  
 October 21

See details on  
 page 63

Don’t miss the  
 networking drinks  
 reception!

Day 1, Tuesday,  
 October 21,  
 from 4:30pm

Sponsored by



DON’T MISS...  
 PARCEL AND POSTAL  
 TECHNOLOGY INTERNATIONAL  
 AWARDS 2025

Day 1, Tuesday,  
 October 21, 2025

See details on  
 page 54



FREE TO  
 ATTEND!

MEET WITH LEADING  
 EXHIBITORS!

JOIN US TO DISCOVER  
 THE LATEST INDUSTRY  
 DEVELOPMENTS



Modular tech-enabled smart lockers

▶ **IntelParcel**, Booth: 11.530

IntelParcel's smart lockers are purpose-built to transform parcel pickup, storage and delivery through automation, security and seamless integration. These climate-resilient, modular lockers feature advanced access methods including facial recognition, iris scanning and traditional PIN/QR-based options, offering maximum flexibility for indoor or outdoor deployment.

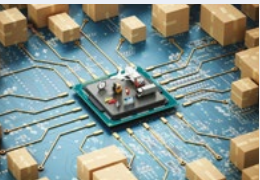


The lockers support white-labeling, customizable compartment layouts and front-facing maintenance. Each unit is IoT enabled for real-time monitoring, remote diagnostics and system health alerts. Environmental sensors ensure parcel safety, while the locker software platform provides a unified interface for users, operators and couriers.

With built-in integration capabilities via mobile apps and REST APIs, IntelParcel smart lockers connect effortlessly with e-commerce platforms and logistics systems.

Laser-focused visibility on end-to-end costs

▶ **The Information Factory**, Booth: 10.135



Using proven activity-based costing methodology, LogiCAT identifies the triggers and drivers to deliver comprehensive analysis on where and how to manage costs effectively.

Developed by The Information Factory, LogiCAT's four-stage

approach ensures accuracy and transparency.

Users can assess profitability by product, customer, sales channel, lane and more; enhance sales and pricing effectiveness by setting tariffs and discount levels based on true costs; and use accurate costing data to optimize their networks, manage loss-making customers and assess the viability of providing new services.

Performance-focused solutions

▶ **Fortna**, Booth: 10.350

Fortna will showcase the OptiSweep solution, which automates the sorter close-out process using advanced robotics, replacing manual workflows in high-volume environments. Capable of processing 4,000 to over 34,000 items per hour, the Fortna WCS software manages the workflow and ensures seamless integration with existing sorters and consolidation stations.

Visitors can also learn about the Fortna Product Speed Optimization module, an advanced control logic system that reduces sorter speed while maintaining the same throughput. Additional innovations include the Smooth Items Remover, which enhances efficiency through increased high-capacity sorter throughput, and the data acquisition system, which enables real-time monitoring and supports data-driven predictive maintenance strategies.



NEXT-GENERATION LINE SORTER

▶ **Vanderlande**, Booth: 10.420

From handling light or irregularly shaped parcels, to finding ways of improving system availability, capacity and sustainability, the modern parcel depot has many challenges to overcome. With such issues in mind, Vanderlande has developed a revolutionary line sorter called Spox, which delivers greater flexibility, accuracy and uptime. It also allows busy depots to increase sorting volumes while reducing reliance on manual labor.

The sorter harnesses advanced technologies, such as electronically controlled shoes, sensors and model-based controls, to enable a wide range of parcel-handling capabilities and provide flexible sorting configurations. With Spox, users can expect fewer missorts and manual interventions, leading to lower operational costs.

To move beyond the capabilities of traditional line sorters, Spox introduces several key innovations, including smarter sorting and intelligent parcel controls to increase throughput; self-monitoring and predictive diagnostics for higher availability; and the use of fewer components and interoperative parts for easier maintenance.

Spox has been developed using circular design principles and built using components that have extended lifecycles.

Vanderlande will provide a live demonstration of the Spox sorter at the expo, so visitors can see how it handles real parcel challenges. The company's team will be on hand to explain how the sorter works, what problems it can solve, and how its design took into account the needs of customers across the parcel industry.

UNIVERSAL PARCEL MEASUREMENT APP

▶ **Rooniq**, Booth: 12.62L

Rooniq will debut its cross-platform parcel measurement app at this year's expo, showcasing a powerful new way to size parcels using any depth-enabled mobile device. The software delivers real-time, millimeter-accurate dimensions – length, width, height and volume – without the need for dedicated hardware. Built for consumer and enterprise use, the solution fits seamlessly into every stage of the delivery chain, from sender-side customer apps to courier handhelds and warehouse systems. The benefits include faster processing, fewer remeasurements, accurate pricing and optimized vehicle loading.

Available as an SDK, Rooniq's technology can be deployed inside any existing logistics or retail app. With edge, cloud or on-prem options and full data ownership for delivery firms, it is built for scale, privacy and efficiency.



SOLUTION FOR DENSE, HIGH-SPEED ORDER PICKING

▶ **Hangzhou YaoLi Technology**, Booth: 10.260

YL's Automated Put Wall is a compact, modular sorting system that fits seamlessly into tight layouts, with no heavy infrastructure needed. It can be installed quickly and expanded easily to reduce users' investment risk.

Ideal for e-commerce fulfillment centers, postal facilities and regional hubs, it's the smart way for businesses to grow their capacity without growing their footprint.

The Automated Put Wall system is designed for businesses seeking high flexibility and a fast return on investment. With its space-saving vertical structure and modular layout, it allows operators to handle multiple orders simultaneously, even in limited areas. The system is easy to scale, simple to maintain and delivers consistent performance across high-frequency order-picking environments. Find out more at the expo.



REGISTER NOW FOR YOUR  
 FREE EXHIBITION PASS

[www.parcelandpostexpo.com](http://www.parcelandpostexpo.com)



FLEXIBLE, SCALABLE SORTING SOLUTIONS

▶ **Interroll**, Booth: 10.360

Interroll, one of the world's leading providers of material handling solutions, will present its enhanced Sorter Solution Platform at the expo.

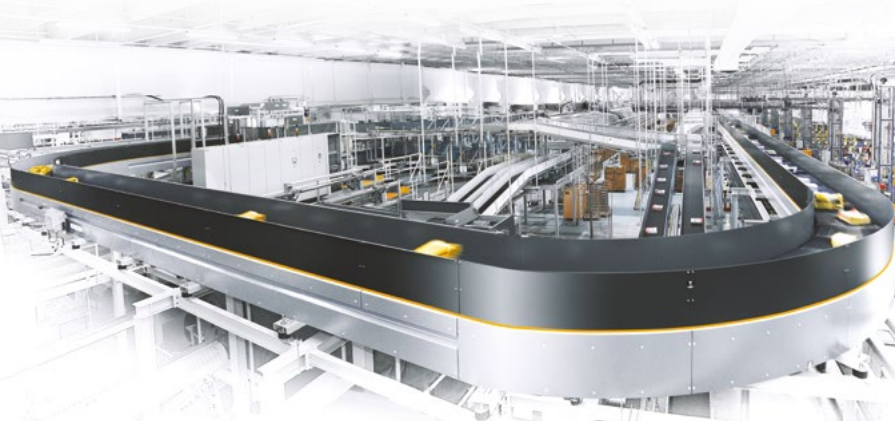
Thanks to a modular system of mechanical solutions for horizontal or vertical sorting functions, standardized interfaces, coordinated control and plug-and-play commissioning, individual sorting systems can be quickly configured, easily adapted and expanded at any time if required.

The Sorter Solution Platform is designed for companies that need to sort large quantities of goods automatically and cost-effectively. From parcels, polybags and cartons to mail-order goods and packaged food, the individually configurable systems sort goods weighing up to 50kg, with an output ranging from 2,000 to over 20,000 pieces per hour.

The systems also require up to 50% less energy and are quieter than conventional

automatic sorting systems. At the same time, the mechanically robust basic principle guarantees low maintenance costs and a very long service life – some of the more than 500 sorter systems

implemented worldwide have been in reliable continuous operation for over 15 years. Users include leading companies such as Amazon, DHL, FedEx, UPS, Zalando and Deutsche Post DHL.



SOLAR-POWERED PLATFORM FOR AUTONOMOUS DELIVERY

▶ **Direct4.me**, Booth: 11.375

Direct4.me is bringing Direct4Lean and Direct4Smart to Parcel+Post Expo 2025 – two hardware options, one interoperable last-mile platform.

Direct4Lean is a screenless, robust locker designed for large-scale, cost-efficient deployments. Direct4Smart adds touchscreen interaction, built-in connectivity and an integrated camera for enhanced security and user verification. Both lockers are solar powered and fully self-sustainable, running on the same cloud-native infrastructure. They connect seamlessly through open APIs, enabling a fully autonomous ecosystem that adapts to any delivery scenario.

Whether it's courier drop-offs, customer pickups or deposit use cases, the system delivers a consistent user experience and low cost per parcel. Remote management, self-service setup and plug-and-play hardware make deployment fast, even in areas without permanent power or internet.

Designed for sustainability and built for scale, Direct4.me empowers couriers, postal operators and businesses with a flexible, scalable locker network solution.





LEADERSHIP  
 CONFERENCE  
 SPEAKER  
 HIGHLIGHT

**Euwe Kamsteeg,**  
 director of digital and  
 agile transformation,  
 PostNL



Kamsteeg reflects on how PostNL's  
 move from "doing digital" to truly  
 "being digital" – by embedding agile  
 ways of working and  
 a digital-first mindset



DAY 1, TUESDAY  
 OCTOBER 21, 2025,  
 3:00PM

**Fireside chat: Trends &  
 transformations in the  
 evolving e-commerce  
 ecosystem**

SESSION  
**Beyond the click:  
 Thriving in the  
 evolving e-commerce  
 ecosystem**

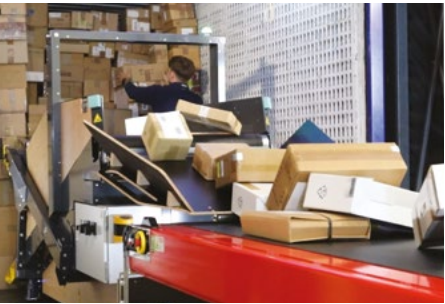
– was a necessary  
 foundation to unlock the  
 next phase of transformation.  
 Kamsteeg now explores the  
 next phase: how staying  
 ahead of the curve in areas  
 like GenAI and cutting-edge  
 algorithmic planning and data  
 solutions enables PostNL to  
 shape – not just follow –  
 e-commerce trends. With forward-  
 thinking applications already in use,  
 he shows how anticipating receiver needs and empowering  
 customers with intelligent, seamless delivery and smart digital  
 solutions makes PostNL a true enabler of growth and loyalty in  
 an increasingly demanding market.

SCAN THE QR CODE OR VISIT THE  
 WEBSITE TO SEE THE LATEST PROGRAM  
 AND SPEAKER DETAILS  
[www.parcelandpostexpo.com](http://www.parcelandpostexpo.com)



## SMARTER, SAFER PARCEL UNLOADING

▶ **Körber,** Booth: 12.300



Körber's ErgoUnload is a  
 game-changing semi-automatic  
 unloading solution designed to  
 tackle one of parcel logistics'  
 most demanding challenges:  
 the fact that traditional trailer  
 unloading requires two people  
 and intense physical effort.

Compact, mobile and  
 compatible with standard  
 telescopic conveyors,  
 ErgoUnload enables single-

operator unloading of bulk and singulated parcels. Integrated conveyors,  
 adjustable flaps and optional grippers minimize strain while maximizing  
 reach and control. Setup takes minutes, and the system can easily be  
 moved between docks for maximum flexibility.

With throughput of up to 3,000 parcels per hour, ErgoUnload doubles  
 performance compared with manual unloading, cuts cycle times in half  
 and reduces lifting effort by over 90%. The result: fewer personnel  
 needed, faster processing and significantly improved ergonomics.

Ideal for parcel hubs facing labor shortages or rising operational costs,  
 ErgoUnload delivers measurable gains in efficiency, safety and employee  
 satisfaction without disrupting existing workflows.

## NEXT-GEN PARCEL LOCKER SYSTEM

▶ **Keba,** Booth: 11.410



The Loxmate parcel locker system was designed to keep pace with  
 the demands of today's fast-moving logistics landscape. Its modular  
 architecture allows for rapid installation and flexible expansion, making  
 it ideal for dynamic locations and scalable delivery networks.

The system is built for maximum deployment freedom. Whether  
 connected to the grid or powered by the sun, it delivers reliable  
 performance, even in off-grid environments. Versatile payment options,  
 including physical terminals and pay-by-link technology, make it easy  
 to adapt to various business models and user needs.

Operators benefit from Loxmate's energy-efficient design, which  
 supports low power consumption and solar readiness, translating into  
 lower operational costs and increased sustainability.

Intuitive touchscreens, a modern user interface and integrated light  
 and audio guidance features ensure a seamless experience for all  
 users. The system complies fully with the European Accessibility Act  
 (EN 301 549), promoting inclusive access across all environments.

Visit Keba's booth at Parcel+Post Expo to see Loxmate live.

## REGISTER NOW FOR YOUR FREE EXHIBITION PASS

[www.parcelandpostexpo.com](http://www.parcelandpostexpo.com)



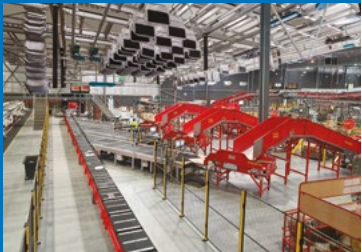
## SMALLS SORTING SOLUTION

▶ **Beumer Group,** Booth: 10.160

The e-commerce boom has led to a dramatic rise in 'smalls'  
 – especially lightweight polybags – which present serious  
 challenges for CEP operators. Smalls are a poor fit for parcel  
 systems that use sliding-shoe technology, because they tend to  
 get stuck when they come in polybags. At the expo, Beumer  
 Group will present two solutions for this issue.

First, by replacing the sliding shoe with a crossbelt, the BG Line  
 Sorter or the BG Sorter CB eases the problems caused by smalls.  
 Furthermore, the crossbelt can famously handle almost all parcel  
 sizes in the same system.

Second, CEPs can split their flows of small and medium/large  
 parcels, having one system to handle smalls and another for  
 larger parcels. But placing two systems adjacent to one another  
 isn't always an option for a CEP if the footprint is already inhabited  
 by a large system. Rather than completely overhauling the main  
 system, CEPs can make use of vertical space by using the BG  
 Pouch technology. The  
 pouch system can either  
 be placed on a mezzanine  
 or suspended from a  
 mezzanine or the ceiling  
 itself. This boosts capacity  
 and solves the problem with  
 smalls without expanding  
 a facility's footprint.



## ACCURATE STREET DATA FOR SMARTER ROUTE PLANNING

▶ **RouteSmart Technologies,** Booth: 11.205

At the expo, RouteSmart Technologies will  
 spotlight the critical role of high-precision  
 street data in powering intelligent last-mile  
 delivery. The company will showcase its  
 advanced route optimization tools built to  
 leverage detailed, attribute-rich Here  
 Technologies map data – including turn  
 restrictions, access limitations and service-  
 side accuracy – to help carriers reduce costs  
 and improve delivery performance.

The RouteSmart team will demonstrate how the company's tools evaluate  
 and enhance clients' existing street data, analyzing granular elements such  
 as alleys, walkways and parking access to eliminate inefficiencies. This  
 data-first approach ensures routing logic and reflects the real-world  
 challenges faced by postal and parcel carriers, resulting in more accurate  
 routes, fewer delays and better customer service.



## INFINITE FLEXIBILITY IN THE LAST MILE

▶ **SwipBox,** Booth: 11.310

As delivery networks grow in complexity,  
 infrastructure must evolve to match, becoming  
 more adaptive and accessible. At this year's  
 expo, visitors will get a first glimpse of  
 SwipBox's latest solutions shaped by flexibility  
 and seamless connectivity. With a strong  
 focus on modularity and new access options,  
 these innovations are built to scale with users' needs.

Carriers are looking for infrastructure partners that combine  
 regulatory compliance, operational excellence and user-centric  
 design. SwipBox aims to support these goals with practical,  
 data-driven solutions.

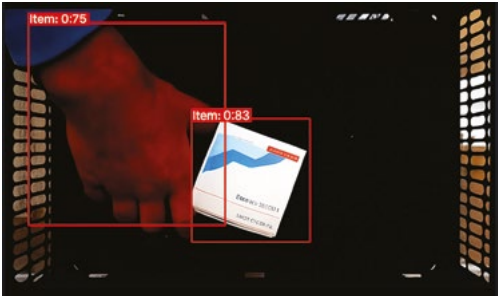


## SMART FULFILLMENT TECHNOLOGY

▶ **Prime Vision,** Booth: 12.310

Prime Vision will release its game-changing Order Fulfilment Validator at the  
 expo. Computer vision solutions have already improved speed and efficiency  
 across the industry, and this new technology goes one step further. Smart  
 recognition systems perform accurate, ultra-fast product recognition by  
 cross-checking items against personalized specification data.

Among the improvements on offer are faster processing times and fewer  
 picking errors. The Order  
 Fulfilment Validator can  
 detect discrepancies  
 instantly, meaning operators  
 have time to solve any issues  
 before the order leaves the  
 facility. High volumes of  
 returns affect profits and  
 customer satisfaction, so  
 Prime Vision hopes this  
 system will deliver a real  
 competitive edge.



## Efficient, affordable sorting

▶ **NDW Group,** Booth: 10.262

NDW Group will present the high-  
 speed Crossline Sorter at the expo. This  
 smart, scalable, cost-efficient solution  
 for high-speed sorting is engineered  
 for flexibility and performance, and  
 enables bidirectional sorting at speeds  
 of up to 1.5m/s. Its compact, modular  
 design allows for seamless integration  
 into existing or new conveyor systems, making it ideal  
 for decentralized or space-limited operations. Whether  
 handling parcels, polybags or irregular items, the system  
 ensures fast and reliable throughput.



Fully compatible with NDW's range of controllers, the  
 sorter is built for easy implementation, reducing setup  
 time and complexity. It's a powerful tool for integrators  
 and logistics providers looking to optimize performance  
 without the investment of large-scale systems.

## Products and services for OOH networks

▶ **Modern Expo,** Booth: 11.320

Modern Expo's Agora of Solutions will showcase a wide  
 range of products and services designed to help users  
 build an efficient OOH delivery network from the ground  
 up. In addition to its flagship lockers, the company will  
 present several innovations aimed at increasing the ROI  
 of parcel locker networks, streamlining ongoing



operations and enhancing the  
 network with PUDO-  
 automating solutions.

The company will also  
 highlight its latest partnerships  
 and share the valuable insights  
 it has gained through these  
 collaborations.

## Traceable and reusable parcel sorting bag

▶ **Guangdong Acoolda Bags Technology,**  
 Booth: 12.100

Acoolda reusable PE woven bags for logistics warehouses  
 are now available with built-in trackers.

The company excels in customization. From tracking  
 parameters (bag routes, sorting milestones) to size,  
 thickness and branding, its in-house team turns  
 customers' specs into reality.

The bags are foldable to  
 one-tenth of their expanded  
 size for space-saving storage,  
 yet rugged enough to carry  
 heavy cargo. Whether  
 safeguarding high-value  
 items with real-time  
 monitoring or streamlining  
 sorting workflows, they  
 deliver durability and smart  
 tracking in one.









EXHIBITOR  
EXCLUSIVE!



BLOQ.IT

To find out more, scan  
the QR code or visit  
www.bloq.it

# POWERING THE FUTURE OF LOGISTICS

BLOQ.IT CO-FOUNDER AND COO JOÃO LOPES  
DISCUSSES THE RAPID EXPANSION OF THE  
COMPANY'S NEXT LOCKER NETWORK, INDUSTRY  
COLLABORATION AND HOW THE FIRM AIMS TO  
STAY AHEAD OF ITS COMPETITORS

Following your success  
at last year's event, what  
will you be showcasing at  
Parcel+Post Expo in 2025?

Last year confirmed what I already  
knew: our industry needs  
infrastructure that works, not noise.  
2025 has been the consolidation year  
for NEXT, our flagship locker model.  
At this year's event, you will be able to  
see the results: how we pushed further  
for our client networks – accelerating

their rollouts, ensuring scale with  
reliability. We'll show how our partners  
are using NEXT to expand their  
networks at record pace and without  
any limitations.

We're also bringing something new  
and exciting, which we believe will be a  
new segment-defining product for the  
out-of-home industry in the next  
few years. We believe in showing  
rather than saying, so visitors  
will get to experience it first.



10,648 lockers  
around the world  
are running on  
Bloq.OS

How have you continued to  
evolve your product/service  
offering to stay ahead of  
your competitors?

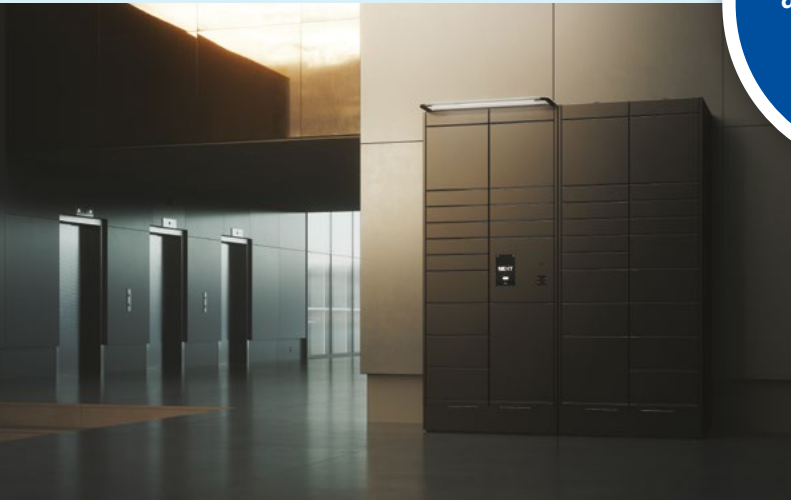
We don't build to outguess  
competitors; we build to solve  
customer pains. We work  
with the couriers, location  
providers, operational teams and  
end users, map the friction and  
build solutions that remove it to  
facilitate accelerated rollouts, higher  
uptime, faster deliveries and simpler  
returns.

Those feedback loops run continuously:  
observe, build, deliver, iterate. It's not  
romantic, but it compounds.

The market is relatively new and there's  
space for multiple players, but scale will  
favor whoever creates the most value per  
parcel with the fewest moving parts. If we  
keep reducing cost, time and risk for our  
customers – and their customers – they  
keep expanding with us. That's how we  
stay ahead.

LEFT: NEXT is  
transforming  
parcel locker  
networks

ABOVE: Bloq.it  
and GLS  
signed a  
partnership  
agreement at  
Parcel+Post  
Expo 2024



October 21, 22 & 23, 2025  
RAI Amsterdam, Netherlands



LEFT: InPost  
is rolling out  
20,000 NEXT  
lockers across  
Europe

BELOW: Bloq.it  
will provide  
a hands-on  
experience at  
Booth 11.230



What challenges does the  
industry face right now, and  
how will Bloq.it address them?

Parcel lockers are still an immature  
market. Most vendors haven't run  
networks at scale, and many operators  
are deploying lockers for the first time  
against incumbents with a long head  
start. This creates room for avoidable  
mistakes such as fragmented suppliers,  
lack of accountability, missed SLAs, slow  
rollouts, poor integrations and costly  
field fixes, which ultimately mean a  
failed network.

We solve this by owning the stack:  
hardware, software and field services.  
One accountable partner.

We've launched large networks fast and  
at scale, and have a repeatable playbook.  
The takeaway is simple: don't reinvent the  
wheel with a patchwork of providers. In  
an adjacent market, that's how programs  
fail. Work with someone that has already  
scaled. We de-risk the process by taking  
end-to-end ownership and accountability,  
and let operators focus on their core  
service: delivering parcels.

Why should attendees come to  
your booth during the expo?

Come to our booth to see a working  
preview of the next decade of logistics – in



practice, not in theory. If you're building  
an out-of-home network, you'll leave with  
the blueprint for how to do it right.

What are you most looking  
forward to at this year's event?

We're most looking forward to having all  
our customers and partners in one place.  
It's the unique moment to show what  
we've been building and spotlight their  
wins. For us, it's both a showcase and a  
celebration of our achievements – and the  
best place to show what's next.

This year is special: we're  
unveiling a new product that  
raises the bar for out-of-home  
networks and tackles one of the  
biggest challenges the industry  
faces today. Our  
team are eager to  
show what they've  
been building.



VISIT BLOQ.IT AT  
BOOTH 11.230



IDEAL  
SOLUTION

VANDERLANDE'S NEW SORTING SYSTEM IS REVOLUTIONIZING PARCEL HANDLING, EXPLAINS HERMAN KOOIJ, PRODUCT MANAGER FOR LINE SORTATION

**Tell us about the SPOX line sorter that you'll be showcasing at Parcel+Post Expo.**  
 We'll be presenting our revolutionary new next-generation line sorter, addressing the most pressing challenges in modern-day parcel sortation systems. From handling light and irregularly shaped parcels to improving system availability, capacity and sustainability, every element of the sorter is engineered with real-world operations in mind, offering greater flexibility, accuracy and uptime.



EXHIBITOR  
EXCLUSIVE!

**What makes your product innovative?**  
 SPOX is a single, unified technological platform that enables a wide range of parcel handling capabilities and is completely flexible in different configurations. SPOX introduces several key innovations that will bring increased throughput through smarter sorting and intelligent parcel control; higher availability enabled by self-monitoring and predictive diagnostics; lower operational costs thanks to reduced misorts and fewer manual interventions; and sustainable operations through extended component lifecycles and circular design principles. Furthermore, the system is easy to maintain due to fewer components

and mechanical interoperative parts.  
 With these innovations, SPOX sets a new performance standard far beyond that of traditional line sorters on the market.

**Why should attendees visit the Vanderlande booth at the show?**  
 We will be showing SPOX in action! Visitors will get a live demo of our new sorter and see how it handles real parcel challenges, right there on the spot. Our team will walk people through how it works, what problems it solves and how we've designed it based on what we heard from customers across the industry. It's a great chance to ask questions, get hands-on insights and see smart sortation up close.



VISIT VANDERLANDE  
AT BOOTH 10.420

NEW MODULAR PUSH TRAY SORTER

▶ Dürkopp Fördertechnik, Booth: 12.530

DFT's new push tray sorter is built on a fully modular design that delivers speed, flexibility and scalability. Every aspect, from hardware to software to service, is designed for plug-and-play simplicity. Pre-assembled modules with integrated cabling drastically cut installation time, while standardized components enable fast customization and future upgrades with minimal disruption. The system's smart software adapts to different operational modes and connects effortlessly via OpenAPI, making integration seamless. A digital twin allows customers to simulate and test their setups virtually before anything is installed, ensuring a smooth go-live. Real-time analytics and condition monitoring keep performance high and downtime low. With rapid deployment, reduced risk and a future-ready architecture, the DFT push tray sorter empowers businesses to stay agile in a fast-moving market. Find out more at the expo.



REGISTER NOW FOR YOUR  
FREE EXHIBITION PASS

www.parcelandpostexpo.com



PARCEL LOCKER INNOVATION

▶ Alfa 3, Booth: 11.280

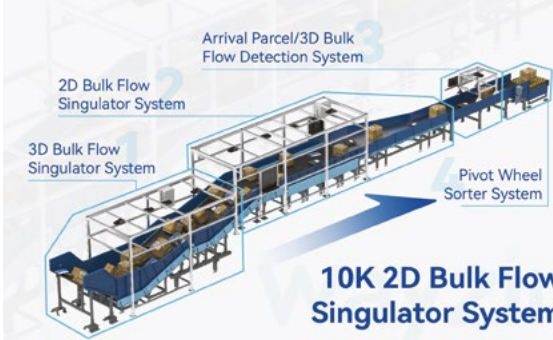
The Czech Republic has one of the highest parcel locker densities in the world – with more than one box per 1,000 residents – and is growing rapidly. About one-third of these lockers are made by Alfa 3. As the network expands, so does the challenge of visual clutter in public spaces. Thus, Alfa 3 has launched a design competition inviting students from across the country to rethink parcel locker design and multiprovider delivery hubs for shared use. The aim is to inspire cities and investors to help shape better public spaces while bringing delivery services even closer to users.  
 Alfa 3 will share the winning concepts on its social media. They include ideas for e-bike charging and smart links to city infrastructure. Find out more at the expo!



FAST, ACCURATE PARCEL SINGULATION FOR BULK FLOW CHALLENGES

▶ Wayzim, Booth: 12.520

Wayzim's 10K 2D Bulk Flow Singulator System is a high-efficiency solution for pre-sorting operations. Specifically designed for logistics hubs dealing with high-volume, mixed-size small parcels, this system solves the challenges of disorderly package flows by converting bulk parcels into a single, orderly stream.  
 The singulator integrates Wayzim's proprietary vision recognition algorithms, allowing real-time identification, positioning and spacing of individual items in a bulk flow. Combined with the company's intelligent control software and precision mechanics, the system ensures accurate, high-speed parcel separation at a throughput rate of up to 10,000 items per hour per line.  
 Wayzim's solution reduces manual intervention, increases sorting accuracy and provides a flexible interface to connect seamlessly with various downstream sorting technologies, such as crossbelt or narrow-belt sorters. The modular design also supports easy scaling to meet growing parcel volumes.  
 This showcase reflects Wayzim's continued commitment to enabling smarter, more efficient parcel handling through automation and data intelligence.



UPGRADED  
ANALYSIS  
SYSTEM

▶ EAE Solutions, Booth: 12.230

EAE Solutions will present the latest version of its advanced image analysis system, IAS EVO, at the expo. This iteration is faster, more powerful and more efficient than ever before. With a quad-core ARM processor, the system delivers real-time analysis with improved speed and accuracy. One of the key innovations is the ability to process over three times as many captures of the same item, significantly enhancing object recognition and classification.  
 A major memory upgrade improves multitasking, enabling the system to handle concurrent tasks while providing detailed analytics of past production runs. These technical enhancements support operations that demand high-volume, high-precision analysis and offer clear benefits for optimizing parcel flow and logistics performance.  
 With these advances, the IAS EVO meets the increasing demands of automated parcel environments and supports future developments in scalable logistics technology.



ZERO-ERROR PARCEL SORTING WITH SMART WATCH AND LIGHT TAG

▶ Nimmsta, Booth: 10.390

Nimmsta will showcase how real-time data transforms parcel sorting. The core of this innovation is the Nimmsta Productivity Cloud, which delivers live reports, process analyses and concrete recommendations based on data captured directly on the shop floor.  
 Workers use the Nimmsta Industrial Smart Watch and Put-to-light Light Tags to perform hands-free sorting. Parcels are scanned on the backhand, and a Light Tag visually indicates the correct destination. Every action is tracked in real time and flows directly into the Productivity Cloud.  
 The system enables supervisors and process owners to immediately identify bottlenecks, inefficiencies or training needs and act on them with just a few clicks.  
 This end-to-end system enables error-free sorting, cuts onboarding time to minutes, and boosts performance, while giving teams full control over their operation.  
 No system integration is required. The solution can be deployed within days and scaled easily across multiple sites.



LEADERSHIP  
CONFERENCE  
SPEAKER  
HIGHLIGHT



Kishan Mishra,  
last and first mile –  
strategy and  
transformation, IKEA



Customers who have ordered something on the internet want clarity about what they ordered and in how many boxes the order will be delivered (in the case of furniture, for example, which often involves various pieces). Today, even the delivery drivers can't say which parts of the order they have and which they don't. How can the industry (sellers and delivery companies) create a unique customer experience that provides customers with transparency, flexibility and control?

SCAN THE QR CODE OR VISIT THE WEBSITE TO SEE THE LATEST PROGRAM AND SPEAKER DETAILS  
www.parcelandpostexpo.com



DAY 1, TUESDAY,  
OCTOBER 21, 2025,  
2:00PM

Customer expectations  
versus operational reality  
SESSION

Beyond the click:  
Thriving in the  
evolving e-commerce  
ecosystem







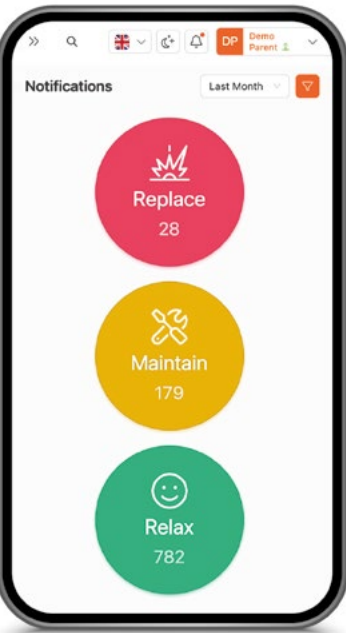
PREDICTIVE BATTERY MONITORING  
FOR POSTAL AND LOGISTICS FLEETS

► **BatteryCheck**, Booth: 12.72R

BatteryCheck will showcase its patented predictive battery monitoring service designed to extend battery life, increase safety and reduce unplanned downtime in postal and logistics operations. Its solution continuously analyzes real-time telemetry from any type of industrial battery (e.g. lithium, lead-acid) across various vehicle and equipment types, including electric delivery vans, forklifts, AGVs, kiosks, parcel

lockers and backup power systems in sorting centers. The platform enables 24/7 visibility into battery health, performance anomalies and early-stage degradation, helping fleet operators reduce service costs, avoid SLA penalties and improve environmental sustainability by enabling safe second-life use. Innovations include unique battery fingerprinting (BIN – Battery Identification Number), blockchain timestamping for audit-ready analytics, and AI predictive algorithms that provide actionable insights via an easy-to-understand reverse traffic light.

BatteryCheck's solution is vendor independent, API-in, API-out, GDPR compliant and quick to deploy.



REGISTER NOW FOR YOUR  
FREE EXHIBITION PASS

[www.parcelandpostexpo.com](http://www.parcelandpostexpo.com)



CUSTOM-BUILT OR READY-TO-USE  
AUTONOMOUS LOCKERS

► **Jetbeep**, Booth: 11.500

Jetbeep's autonomous parcel locker platform enables customers to build battery-powered autonomous lockers in any metal design, whether fully custom or based on the company's field-tested models. The platform includes controllers and software, delivering the full functionality of grid-powered lockers while supporting all essential courier and customer flows. Jetbeep's technology is easily integrated into existing infrastructure and fully customizable to match each client's operational logic.

Visitors to the Jetbeep booth will see Jetbeep technology in action, powering a range of locker designs already deployed across the EU. One of the key highlights will be the close-to-home parcel locker solution. Built on Jetbeep's cost-efficient technology, it enables smaller, more distributed lockers, placed much closer to customers while remaining profitable to operate.

This comes in two models. Community Locker is a compact, carrier-agnostic unit designed for residential areas, bringing delivery within 300m of 50-100 households. Personal Locker is a private, standalone unit for individual homes, offering secure and convenient doorstep delivery.

This solution has already been adopted by Omniva for the Baltic region.



CONNECT | 2posts |

c2p STARTUP INNOVATION  
AWARD COMPETITION

Tuesday, October 21, 2025, from 2:00pm  
Disrupt & Deliver Stage

The annual c2p Startup Innovation Award competition will take place on **Day 1, October 21, 2025**. This leading startup-focused industry event will bring together innovation and strategy leaders from parcel, postal and logistics companies who will choose the winning startups in the four categories:

- **First and Last Mile**
- **The Autonomous Last Mile**
- **Processes, Digital and Data**
- **E-Commerce, Retail and Cross-Border**

In the evening, the winners will be announced during the Parcel and Postal Technology International Awards ceremony, one of the highlights of Parcel+Post Expo!

Visit [www.parcelandpostexpo.com/site-programme](http://www.parcelandpostexpo.com/site-programme)  
for more details

FREE TO  
ATTEND!



IT SOLUTIONS FOR SMART  
PARCEL LOCKERS

► **Nodka Automation Technology**, Booth: 10.100

Nodka's panel PC and box PC solutions, which are purpose-built for indoor and outdoor smart parcel lockers, will be on display at the expo. The customizable IT platforms offer secure, efficient, eco-friendly performance tailored to real-world applications.

The solutions offer flexible mounting options: panel mount, wall mount, VESA and rack mount. The displays range from 7-32in and are customizable in size, color, material and branding, all with essential certifications for kiosk integration. The high-performance, tailored computing includes selectable CPUs to match application needs. Energy-efficient ARM processors are used in control cabinets; the highly efficient Intel Atom series is ideal for automation or digital signage; powerful Intel Core i7 processors are applied in real-time data acquisition.

The industrial-grade touchscreens are sunlight readable, featuring high brightness with anti-reflective/anti-glare coatings. They are waterproof (IP65/IP67/IP68 rated) and dustproof and operate in a wide temperature range: -20°C to +70°C. They are scratch and vandal resistant and offer wide viewing angles and high contrast ratio.

INSTANT TIPPING  
FOR DELIVERY  
PROFESSIONALS

► **TippBee**,  
Booth: 12.72P

TippBee is looking forward to talking to expo visitors about how it has revolutionized the way customers show appreciation to last-mile delivery professionals. In a world where cash is disappearing, TippBee enables contactless tipping through QR codes and NFC tags – no app download or registration required.

With TippBee's smart tipping system, couriers and drivers can receive instant cashless tips via their own personalized QR codes. Customers simply scan or tap the code to leave a small thank-you – a seamless experience that boosts motivation, performance and job satisfaction.

New for 2025, TippBee is introducing a wearable version of its tipping tags, designed to be clipped to uniforms or bags for maximum visibility. It's ideal for package delivery, food delivery and postal services.

Already in use by leading European taxi fleets, TippBee is expanding to the parcel and post industry, helping companies enhance customer service and unlock new income streams for their workforces.



MACHINE VISION MADE EASY

► **Sick**, Booth: 10.235

Sick will present its latest innovations in vision-based automation for parcel logistics at the expo, featuring the powerful Inspector8xx series and the Nova tools for presence and quality inspection. These technologies are designed to boost throughput and uptime in sorting centers and depots.

The Inspector8xx series are compact, high-performance machine vision sensors ideal for demanding inspection tasks such as label verification, quality inspection and object detection. With AI-powered inspection capabilities and intuitive configuration, they enable logistics operators to rapidly adapt to changing shipment formats and label requirements, without programming expertise.

Complementing this is Nova, Sick's modular vision software platform for 2D and 3D inspection tasks. It offers a rich toolbox for fill-level measurement, completeness checks and positioning, including AI-powered capabilities for complex damage detection and classification. Users benefit from quick customization through plug-in tools and an intuitive web-based interface. Nova runs across a wide range of Sick vision sensors.

Sick's track-and-trace systems now feature advanced vision software that supports intelligent classification and inspection tasks such as bag box classification, dangerous goods detection, single item verification, flat object profiling, OCR and classification of shipments by object type.



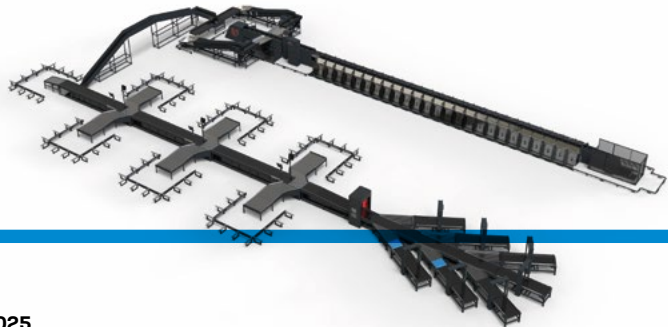
MODULAR SORTING LINE FOR SMALL AND LARGE PARCELS

► **UIS**, Booth: 10.345

Ukrainian Intelligent Systems (UIS) will showcase its next-generation modular parcel sorting line designed to handle small and large parcel streams in a single integrated setup. The innovation combines three key components: the TiltTraySorter for small parcels, the SwitchSorter for large and heavy shipments, and a pre-sorting DWS Metrix module that dynamically separates parcels by dimension and weight.

This scalable and space-efficient system is ideal for logistics centers seeking to increase throughput while maintaining flexibility. The DWS Metrix identifies and routes parcels to the appropriate sorter, reducing manual handling and optimizing flow. The TiltTraySorter ensures precise sorting for smaller formats, while the SwitchSorter manages bulky items with high reliability.

UIS has over a decade of global experience in logistics automation. With R&D and production in Kyiv and Kraków, the company combines hardware engineering with advanced software for warehouse, transportation and parcel operations.





**SMART LOCKER EXPERTISE**

**► UboxLocker, Booth: 11.185**

UboxLocker integrates R&D and manufacturing, delivering one-stop solutions including hardware development and software support. Its 100-strong team includes a 10-person technical unit, backed by a 10,000m² production facility that enables full in-house process control. With 17 years in the field, the company's core members are among China's earliest express locker pioneers.

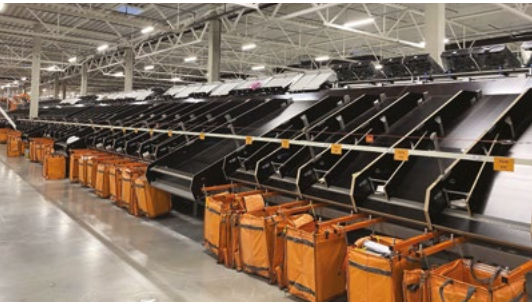
At the expo, the company will showcase a smart locker prototype. It features proprietary design, an in-house-developed PCB board and electric control locks, plus integrated identity verification: facial recognition, fingerprint scanning, card reader and barcode scanner. Preloaded with UboxLocker's standard software, it highlights the company's manufacturing quality and end-to-end development capabilities.



**FLEXIBLE AUTOMATED SORTING**

**► Equinox Group, Booth: 10.370**

Expo attendees will be able to witness the high-performance Equinox LR-sorter in action and gain a firsthand impression of its efficiency. The expert Equinox team will introduce visitors to the company's innovative LRH-sorter, which is the latest Equinox LR-sorter model and is built on the proven slide tray sorter technology. It enables flexible automated sorting. It features an additional recirculation function and offers movement in any direction, maximizing the number of stations in difficult layouts. Due to its ability to ascend and descend, the design allows for a parcel induction station at the floor level. Furthermore, the latest tray technology means one bigger parcel can be carried onto two trays, which enables the sortation of larger items. It is ideal for a wide range of products such as parcels, fashion or e-commerce items. The LRH-sorter is a compact solution with a modular design that enables a short delivery time. Other integrations are possible.



**INTELLIGENT INFRASTRUCTURE FOR LAST-MILE DELIVERY**

**► KernTerminal, Booth: 11.360**

KernTerminal will showcase its latest-generation locker systems at the expo, including cold chain lockers for temperature-sensitive shipments, extra-large, on/off-grid hybrid locker units and solar-powered rapid deployment lockers for flexible installation anywhere.

Visitors will be able to explore the company's fully autonomous post office – a complete, employee-free self-service unit featuring interactive vending machines, precision scales, label printers and an intelligent robotic assistant that guides users through every step.

With over 20,000 active lockers across Europe and a strong presence in multiple international networks, KernTerminal is one of the leading developers and operators of open, carrier-neutral last-mile solutions.

**REGISTER NOW FOR YOUR FREE EXHIBITION PASS**

[www.parcelandpostexpo.com](http://www.parcelandpostexpo.com)



**THE FUTURE OF OUT-OF-HOME DELIVERY**

**► Bloq.it, Booth: 11.230**

At Parcel+Post Expo 2025, Bloq.it will showcase how it scales out-of-home delivery networks that can handle unprecedented parcel volumes while staying reliable and cost-effective.

Recently ranked number two in Deloitte's 2024 EMEA Technology Fast 500, the fast-growing company behind the NEXT locker is a leading provider of autonomous locker networks across Europe, built to work with every carrier and retailer.

In addition to NEXT, expo visitors will be able to experience the new product that Bloq.it has created for dense urban environments, aligned with major consumer trends.

Positioned beside the Locker Room Stage, Bloq.it's booth will feature hands-on demos and analytics from projects with GLS, InPost, DeinFach, Vinted Go, DHL eCommerce and others soon to be announced, with real-world proof of solutions already transforming the last mile.

Bloq.it invites the industry to see solutions that reduce costs, cut emissions and improve the customer experience.



**PARCEL+POST EXPO**  
 THE PARCEL INDUSTRY INNOVATION HUB

**October 21, 22 & 23, 2025**  
 RAI Amsterdam, **Netherlands**

**LEADERSHIP CONFERENCE**

**T**he Leadership Conference will give visitors the opportunity to hear observations about the direction of the industry from thought leaders across the postal, parcel and e-commerce sectors. The premium content will be delivered in the form of fireside chats, insights and case studies from industry pioneers representing companies including PostNL, Alibaba Group, Austrian Post, PostNord and IKEA – to name just a few.

The conference is an ideal networking opportunity for posts, parcel carriers and those working in e-commerce fulfillment and retail.

Connect with the industry's most influential decision-makers, form powerful partnerships and leave with the contacts that can shape your future and increase your ROI.

**NEW FOR 2025!**

**35+ SPEAKERS**

**SCAN THE QR CODE FOR THE LATEST CONFERENCE PROGRAM**



**PRESENTATION HIGHLIGHTS INCLUDE:**

**Day 1, Tuesday, October 21, 11:00am**

**Fireside chat - Navigating the storm: Parcel, e-commerce, and logistics growth strategies**

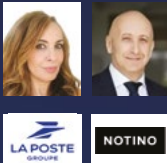
Charles Brewer, CEO, Pos Malaysia  
 Sohail Choudhry, CEO, Naqel Express (Saudi Post Logistics)



**Day 1, Tuesday, October 21, 4:00pm**

**From checkout to doorsteps: Creating beauty and value with outstanding customer experience**

Sanae Murschel, managing director of international sales, Colissimo/La Poste Group  
 Aleksander Alačkov, transportation director, Notino



**Day 1, Tuesday, October 21, 10:00am**

**Think like a platform. Act like a partner. Deliver the experience**

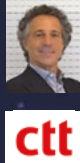
Ivana Vrvščar, board member, Pošta Slovenije Group



**Day 1, Tuesday, October 21, 10:00am**

**Surfing the waves that command e-commerce logistics – CTT case study**

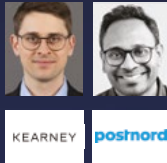
Alberto Pimenta, senior and board e-commerce advisor, CTT, Correios de Portugal



**Day 2, Wednesday, October 22, 2:00pm**

**AI and machine learning: Predictive logistics and smart decision-making**

Mirko Wichmann, principal, Kearney  
 Ravi Kiran Kotty, digital transformation technology strategist, PostNord



**Day 3, Thursday, October 23, 12:00pm**

**Reimagining logistics: Trends shaping the future**

Aidan McGuinness, senior manager, An Post  
 Carlos Bhatt, head of innovation management, CTT, Correios de Portugal



**SCAN THE QR CODE TO BOOK YOUR CONFERENCE PASS\***

[www.parcelandpostexpo.com](http://www.parcelandpostexpo.com)

\*Please note, rates apply for the Leadership Conference. Book now to benefit from early-bird and group booking discounts



# INNOVATION LABS | AGENDA\*

**Innovation Labs**, which will take place across the show floor, will give visitors the opportunity to benefit from fireside chats, workshops and Dragons' Den-style pitches in the Startup & Innovation Zone (Disrupt and Deliver Stage). Hear directly from industry leaders as they share best practice and content – designed specifically with postal operators, parcel carriers, delivery companies and e-commerce professionals in mind.

**FREE TO ATTEND!**

## AI PARCEL LAB

### Day 1, Tuesday, October 21, 2025

**10:00am-12:00pm**  
**Strategic adaptation: Thriving in the new normal of logistics**

**2:00-4:30pm**  
**From GenAI to Agentic AI: Navigating the next frontier in intelligent automation**  
Workshop hosted by Mattia Crespi, CEO - Obit Technologies

### Day 2, Wednesday, October 22, 2025

**10:00am-12:00pm**  
**Next-gen automation & smart parcel tech**  
Presentation by Gert Jan Veelenturf, sales manager - Eurosort

**2:00-4:00pm**  
**Predictive customer experience & smart parcel interaction**  
How AI can propel hyper-personalized delivery experiences

### Day 3, Thursday October 23, 2025

**10:00am-12:00pm**  
**Autonomous delivery & AI-driven last-mile automation**  
From autonomous delivery vans to sidewalk robots

## LOCKER ROOM

### Day 1, Tuesday, October 21, 2025

**10:00am-12:00pm**  
**Out-of-home delivery & locker network expansion**

**2:00-3:00pm**  
**Workshop hosted by FarEye**

**3:00-3:40pm**  
**Power play: Solar versus swappable battery – which locker tech will dominate?**  
Panel discussion

**3:40-4:20pm**  
**Beyond the map: How smart location strategy shapes delivery networks**  
Panel discussion

**4:20-5:00pm**  
**Inside the RFP: How carriers choose tech vendors (and how to win their business)**  
Panel discussion

### Day 2, Wednesday, October 22, 2025

**10:00am-12:00pm**  
**Futureproofing the last mile**  
Presented by Dr Erik Wilhelm, head of research - Kyburz

**2:00-3:00pm**  
**Out-of-home is changing – how carriers can lead with locker infrastructure**  
Presented by Gary Winter, VP global strategic initiatives - Quadient

### Day 3, Thursday October 23, 2025

**10:00am-12:00pm**  
**The future of OOH and first- & last-mile solutions**  
Presented by Martin Kyburz, CEO - Kyburz

## DISRUPT AND DELIVER STAGE

### Day 1, Tuesday, October 21, 2025

**2:00-2:15pm**  
**Introduction, c2p Startup Innovation Award Competition – presentation of judges**  
Explanation of flow and rules

**2:15-2:45pm**  
**c2p Startup Innovation Award Competition**  
Category: First & last mile

**2:45-3:15pm**  
**c2p Startup Innovation Award Competition**  
Category: The autonomous last mile

**3:15-3:45pm**  
**c2p Startup Innovation Award Competition**  
Category: Processes, digital & data

**3:45-4:15pm**  
**c2p Startup Innovation Award Competition**  
Category: e-commerce, retail & cross-border

### Day 2, Wednesday, October 22, 2025

**10:00-10:30am**  
**Corporate expectations: A startup's guide to partnership**  
Panel discussion

**10:30-11:30am**  
**Innovation showcase**  
Startup pitches

**11:30am-12:00pm**  
**Networking**  
Expert panel and startups

**2:00-2:30pm**  
**Decoding demand: Where logistics hurts and startups can heal**  
Panel discussion

**2:30-3:30pm**  
**Innovation showcase**  
Startup pitches

### Day 3, Thursday October 23, 2025

**10:00-11:00am**  
**Navigating the startup rollercoaster: Embracing the highs and surviving the lows**

**11:00-11:30am**  
**Networking**  
Expert panel and startups



**SCAN THE QR CODE FOR MORE INFORMATION AND TO VIEW THE LATEST INNOVATION LABS AGENDA**

[www.parcelandpostexpo.com](http://www.parcelandpostexpo.com)

\*Please note, this program may be subject to change