

# KL-PROJECTS

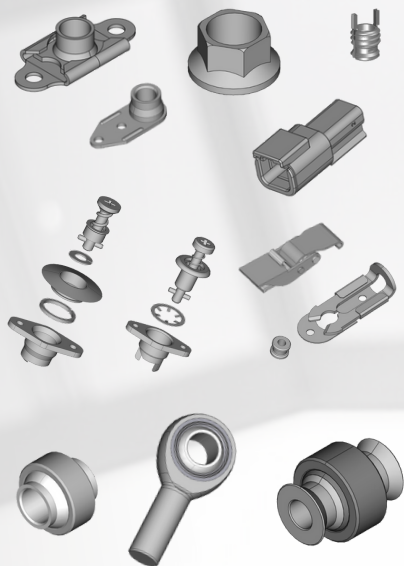
WORLDWIDE SPECIALIST SUPPLIER



MOTORSPORTS PRODUCTS

## ENGINEERING SUPPORT

Ask for engineering support.  
We provide advice, best practices,  
bespoke solutions, 3D-models...



E : [sales@kl-projects.be](mailto:sales@kl-projects.be)

T : +32 58 59 30 30





# **Specialist supplier of fasteners, bearings, connectors and equipment.**

**Mainly serving customers in motorsports, prototyping and specialty vehicles.**

KL-PROJECTS was founded in 2010 by Korneel Liefoghe. The company is based in Belgium very close to the city of Ypres, known for hosting the iconic Ypres Rally since 1965.

After working as a freelance car engineer in rally's accross Europe, Korneel soon chose to become a specialist supplier for fasteners used accross motorsports applications. Over the years different products have been added to the linecard: rod ends & spherical bearings, connectors, cable ties...

KL-PROJECTS is serving customers of critical markets such as motorsports, prototyping, specialty vehicles, aerospace...

Typical customers of KL-PROJECTS are race car manufacturers, subcontractors, distributors and professional end users.







## ROD ENDS & SPHERICAL BEARINGS

Every application has its specific needs. We combine our expertise and a very wide stock range to provide the best bearings for our customers.

Only for motorsports applications we already stock more than 220 different sizes: standards, specials, upgrades...

**NMB**

**AURORA**  
BEARING COMPANY

**unibal**

**RODOBAL**

**FLURO**  
Industrie Tuning Motorsport

**RBC**  
BEARINGS

# K-NUTS & ANCHOR NUTS

Locking nuts by crimping / elliptical deformation. Hexagonal k-nuts have a reduced hex size.

Metric and imperial sizes are available from stock both in high strength steel and CRES.





# BLUEFAST® NUTS FREE OF CADMIUM AND CHROME VI

The **BlueFast®** environment friendly range supersedes the traditional aerospace cadmium plated parts for non-aerospace markets including motorsports and automotive.

Since January 2022, the BlueFast® k-nuts and anchor nuts are used in high performance applications and not only meet the ELV Directive but also provide designers with an environment friendly value added fastener solution.

3 crimp locking deformation is applied across the BlueFast® range of hexagonal k-nuts to ensure consistent locking performance on many different types of bolt and stud. To achieve this, and guarantee repeat performance, the locking torque is controlled and recorded for 15 cycles of each production batch.

# BlueFast.®

by KL-PROJECTS





## Technical drawings, 3D models & MDS entries

To offer a comprehensive support package for designers we have available, on request, technical drawings and 3D CAD models for fast integration into your design.

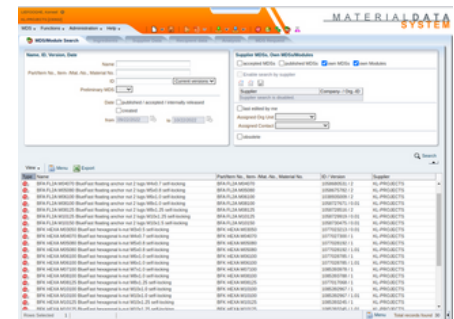
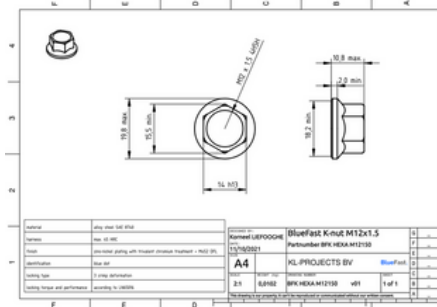
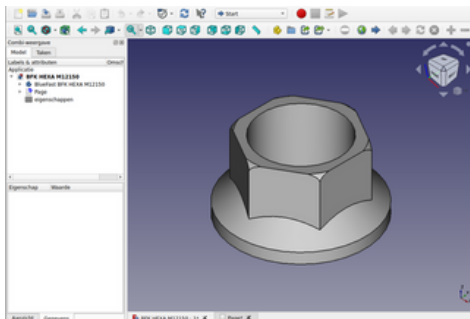
The automotive industry specifically requires the entry of each product in the MDS database in order to know and control all materials and substances in the end product.

More info: <https://bluefast.com>

# BlueFast®

by KL-PROJECTS

- ✓ REACH / ROHS / ELV DIRECTIVE
- ✓ CONSISTENT LOCKING PERFORMANCE
- ✓ MADE IN EUROPE
- ✓ AVAILABLE FROM STOCK



# KEYLOCKING THREADED INSERTS

**High strength threaded inserts typically used in alloys, light materials, steel and cast iron.**

Characteristics:

- gives increased strength in low strength materials
- suitable for thread repair
- high cycle life with multiple tightening and loosening of the bolt or stud
- internal locking versions available: crimp deformation
- both metric & imperial threads available
- miniature, standard (thin wall) & heavy duty versions

AISI 303 stainless steel inserts with AISI 302 keys.

Internal threads:

- metric: M - 5H
- imperial: UNJ - 3B

External threads:

- metric: M - 4h
- imperial: UN - 2A



**Popular for gearbox housings & uprights.**

## NAS & AN BOLTS



NAS 1100 / 6200 series bolts.  
NAS 1300 / 6600 series bolts.  
AN bolts.

## NAS & AN WASHERS



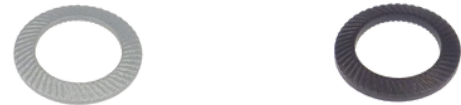
ANg60 / NAS1149  
Thin washers: .032" (0,8mm)  
Thick washers: .063" (1,6mm)

## RIVETS



Blind rivets to be used with floating anchor nuts, Camloc receptacles...

## SCHNORR WASHERS



'S' type & 'VS' type Schnorr washers.  
Both available in black & zinc plated.

# QUARTER TURN FASTENERS

Camloc® 2600 / 2700 series: stud + washer + receptacle.  
Camloc® 4002 series: stud + washer + grommet + ring + receptacle.  
EHF5 and EHF6 series: self ejecting studs with a spring.

EHF5 + EHF6 series 0.6 mm grip



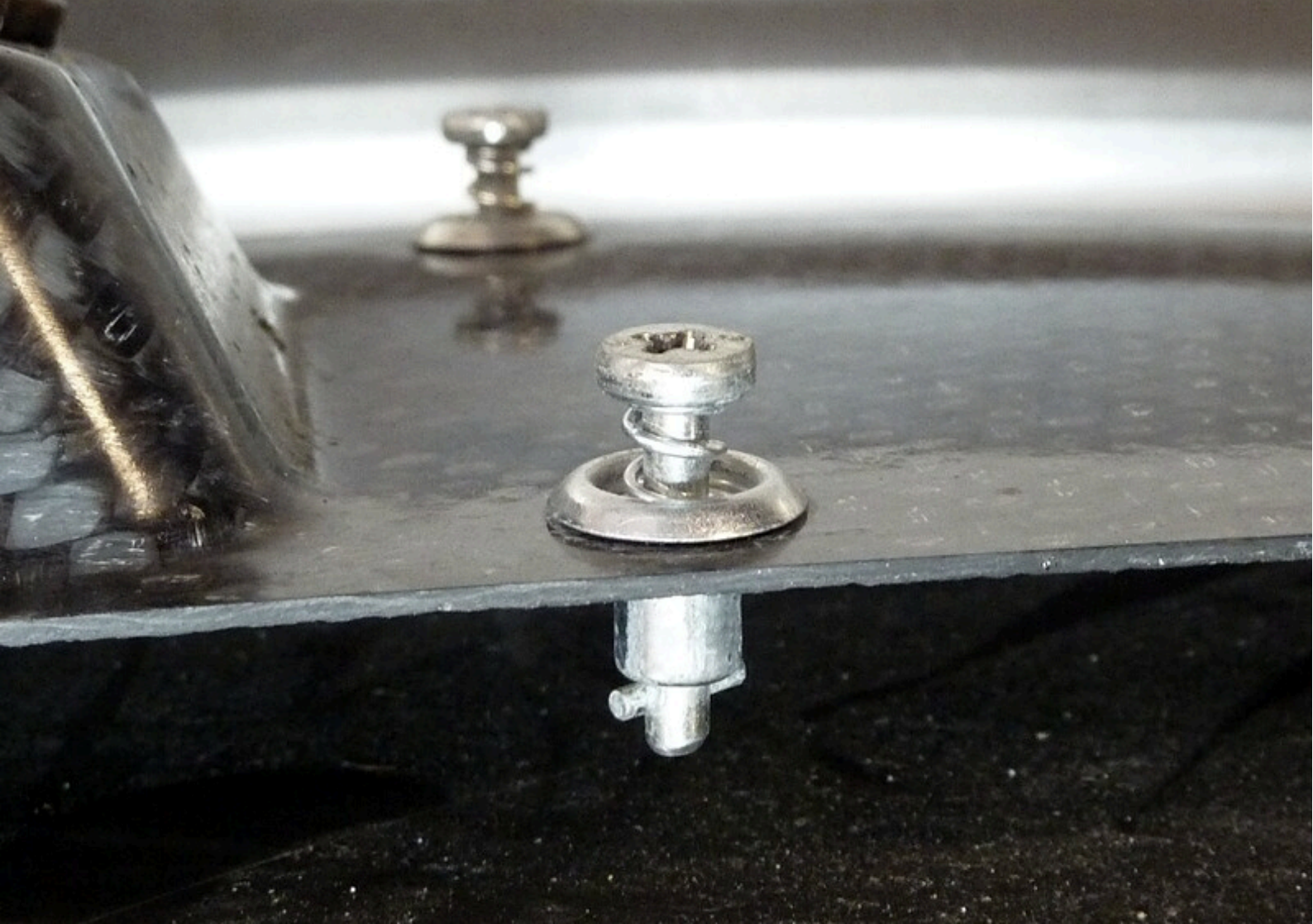
2600 / 2700 series 0.75mm grip per stud length

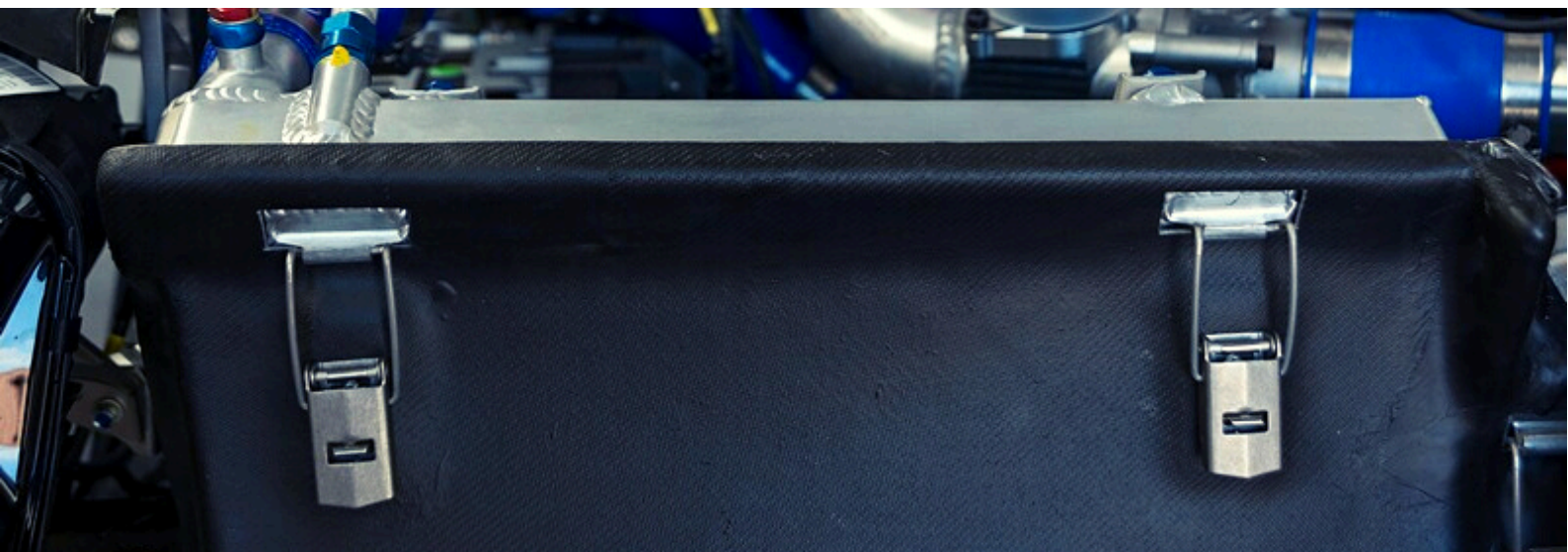


4002 series 0.75mm grip per stud length









# LATCHES

Camloc® V934L, 1429L and V951L series.  
Slide latches are also very popular.

Many more options possible. Based on your needs,  
we can assist you in finding the best model.



# LIVE LOCK PANEL FASTENERS

**High performance fastener system with spring-loaded ratchet design to ensure positive locking action and vibration resistance without relying on prevailing torque.**

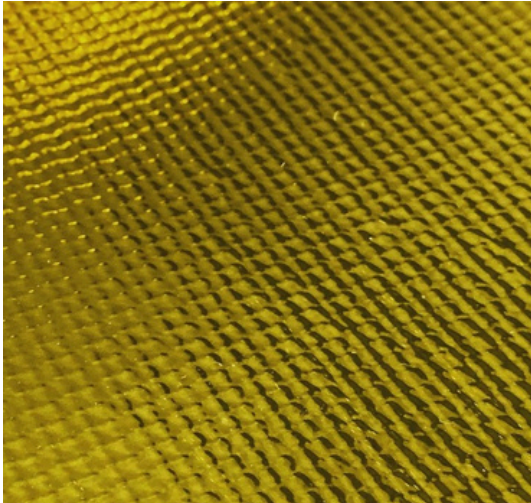


- exceptionally high cycle life
- high resistance against vibration
- fast operation: quad lead thread
- bigger grip range of 1.75mm (.069") per stud length
- receptacle offers radial float to accomodate mislignment

CA18157	floating receptacle
C1810	floating receptacle
CA1820	flush head stud with hex recess
LM4943	low profile studs with hex recess (on request)



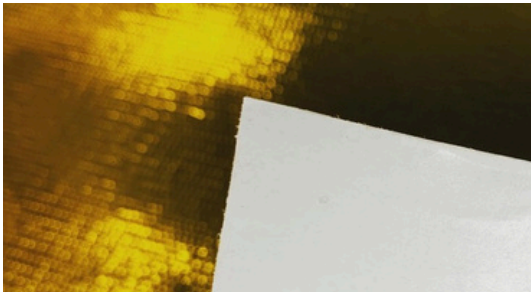
# LIGHTWEIGHT HEAT REFLECTIVE 'GOLD FILM'



Typical applications: fire walls, air boxes, engine covers, side pods, suspension, under trays/floors, bulk heads and many more.

- can easily be cut and configured to each chassis style
- easy to repair since adheres to itself
- lightweight aerospace material
- easy to install and remove

There is up to to 21 °C (70 °F) gradient temperature drop across the 0.15 mm (6 mil) thick film during normal operating temperatures.



This film has a fire resistant pressure sensitive adhesive that incorporates a fiberglass backing for strength and tear resistance.

The fire-resistant adhesive used on the original gold film passes the FAA 12-second vertical burn test.

The colour of the fire-resistant adhesive is opaque white.

# CONNECTORS, CONTACTS & WIRES

## Connectors for motorsports applications & specialty vehicles

- Deutsch DTM up to 7.5A with size 20 contacts
- Deutsch DT up to 13A with size 16 contacts
- Deutsch HDP connectors
- Deutsch Autosport connection systems
- Fluid-Resistant Modified Elastomer Heat Shrink Boots
- Wire with silver plated copper strands: Spec 55, 22759/44



# CABLE TIES & MOUNTING BASES



## **Ty-Rap® premium cable ties with stainless steel locking barb**

- black UV-resistant PA 6.6
- -40 °C to +85°C
- different pack sizes
  - small packs : 100pcs (or 50pcs on large sizes)
  - large packcs : 1.000pcs (or 500pcs on large sizes)



*Extra high temperature 'TYHT' cable ties with a temperature range of -40 °C to +150 °C available on request.*

## **Mounting bases in PA 6.6 or aluminium**



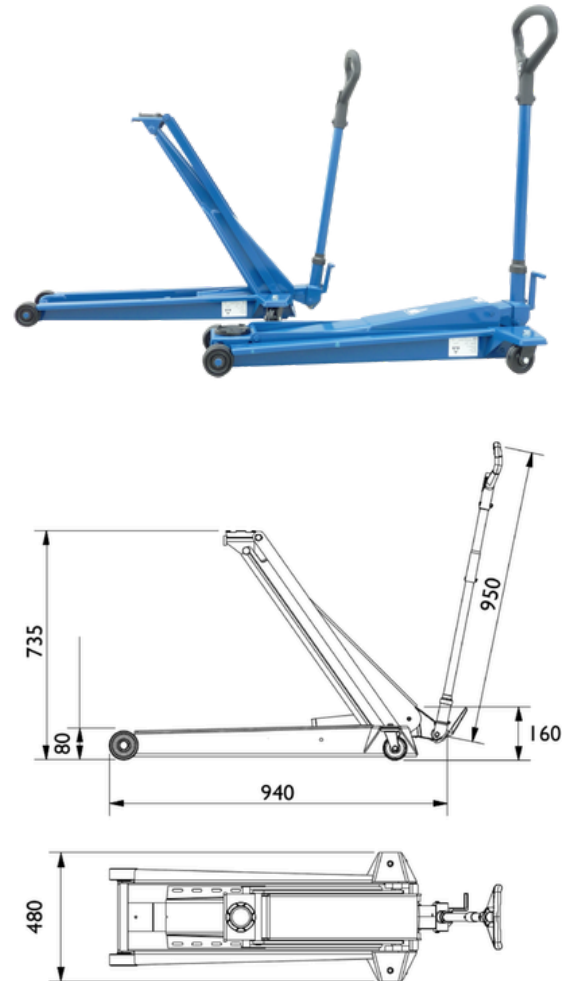
- black UV-resistant PA 6.6 or natural PA 6.6
- aluminium
  - very strong lightweight
  - gluing or screw mounting
  - -100 °C to +450 °C temperature range

# DK13HLQ HIGH LIFT JACKS FOR RALLY SERVICING

For years, the DK 13 HLQ high lifter has been the first choice of all manufacturers and teams in the world rally championship.

- Very low minimum height of only 80 mm
- Wide and robust frame made of high-strength steel
- Fitted with quick-lift pedal for easy reach of lifting point
- Precise and safe control whilst lowering

Capacity	1.3 t
Minimum height	80 mm
Maximum height	735 mm
Frame length	940 mm
Handle Length	950 mm
Frame height	160 mm
Width	480 mm
Weight	39 kg







**AC HYDRAULIC**

NO COMPROMISE

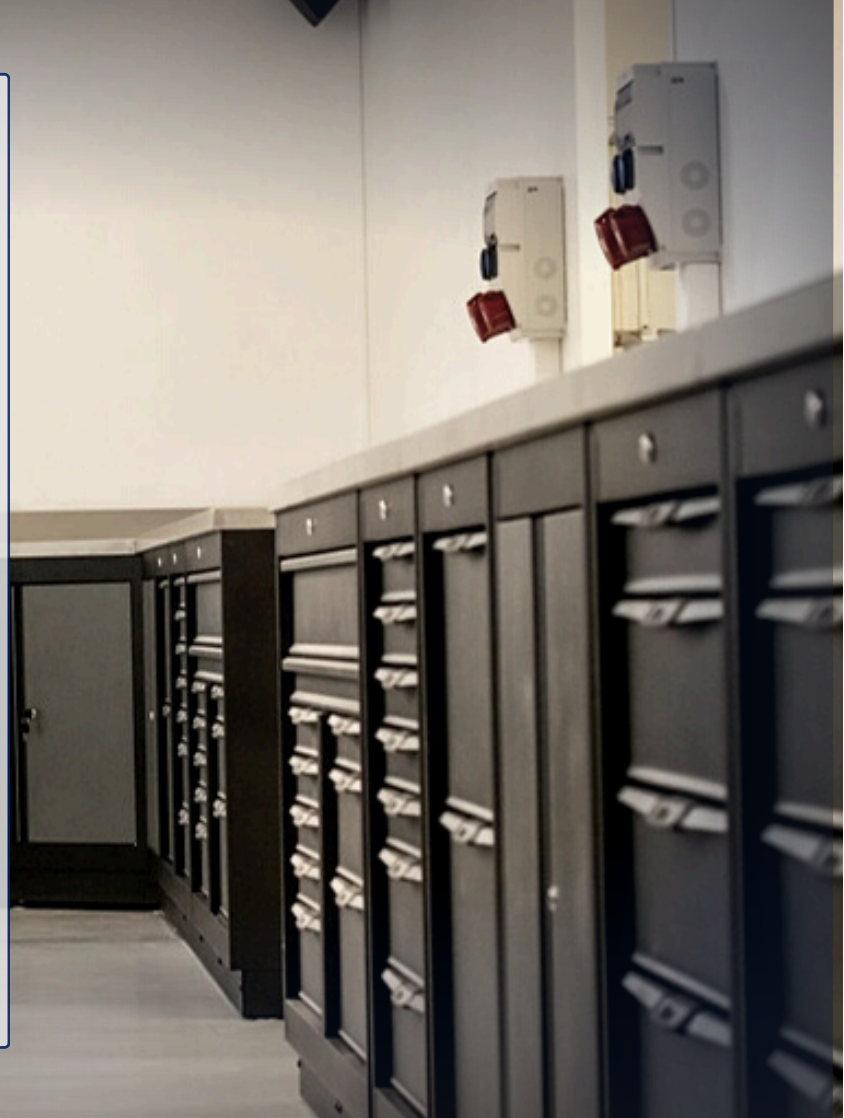


## WORKSHOP PROJECTS FROM A TO Z

As a premium partner of BOXO Tools, KL-PROJECTS is able to provide full services for the installation of workshop furniture in existing environments or starting from scratch in new workshops, including bespoke solutions.

- definition of the customer needs
- creation of a 2D & 3D simulation
- manufacturing of custom solutions
- delivery & installation

Full realisation of your project from A to Z by the own people of KL-PROJECTS.









**KL-PROJECTS BV**  
**HOSTEDE 3**  
**8690 ALVERINGEM**  
**BELGIUM**

**E:    [info@kl-projects.be](mailto:info@kl-projects.be)**  
**T:    +32.58 59 30 30**  
**VAT: BE0713867936**

