

Buckle and Link



TB-01

Magnesium Alloy Buckle



TB-02

Aluminum Alloy Buckle



TB-03

Magnesium Alloy Buckle



TB-04

Aluminum Alloy Buckle



TB-07

Magnesium Alloy Buckle



TB-09

Aluminum Alloy Buckle



TB-9DR

Dual Resistant Buckle



TB-12

Dual Release&Easy
Clip In Buckle



TB-13

Round Handle
Clip In Buckle



TR-24A

Large Link
(Flat/Bent)



TR-24C

Small Link, Flat
(2.5/3mm)



TR-24CB

Small Link, Bent
(2.5/3mm)



TR-30A

2" Dual Link



TR-30B

2" 3-slot Link



TR-30C

2" Dual Link
Compatible with TB-12/TB-13

Adjuster



TR-13-45

45mm Roller Adjuster
(Spring/No Spring)



TR-13-50

50mm Roller Adjuster
(Spring/No Spring)



TR-13A

2" Aluminum Adjuster



TR-13C^(3mm)

2" Steel Tongue
Adjuster



TR-13CS^(2.5mm)

2" Steel Tongue
Adjuster



TR-13D

2" Long Steel
Tongue Adjuster
(2.5/3mm)



TR-13E

2" Steel Adjuster



TR-13F

2" Aluminum Adjuster



TR-14

3" Roller Adjuster
(Spring/No Spring)



TR-14A

3" Aluminum Adjuster



TR-14C

3" Steel Tongue Adjuster



TR-14E

3" Steel Adjuster



TR-14F

3" Aluminum Adjuster



TR-14G

3" Lightweight
Aluminum Adjuster

Link



TR-12
2" Forged Link



TR-12F
2" Stamped Link



TR-34
2" Stamped
Integrated Link



TR-36
2" Integrated
Adjustable Link



TR-38
Clip-in Link



TR-40
3" Integrated
Adjustable Link



TR-15
3" Forged
Integrated Link



TR-15L
3" Long Forged
Integrated Link



TR-16
Left Link



TR-17
Right Link



TR-25S
2" Twisted Link



TR-25L
2" Long Twisted Link



TR-25GF
3-slot Link



TR-27
2" TR-25L+TR-13

Latch



TR-10
3" Forged
Integrated Latch



TR-10F
3" Stamped
Integrated Latch



TR-11
2" Forged Latch



TR-11B
2" Stamped Latch



TR-11C
2" Forged Latch
for window net



TR-11F
2" Stamped Latch



TR-33F
2" Stamped
Integrated Latch



TR-35
2" Integrated Adjustable
Latch with Web Guard



TR-37
Clip-in Latch



TR-39
3" Integrated Adjustable
Latch with Web Guard

Eyebolt Assembly



TR-26L
50mm Eyebolt



TR-26S
23mm Eyebolt



TR-26LKTS
50mm Eyebolt
Assembly



TR-26SKTS
23mm Eyebolt
Assembly

Bolt-in End/Snap Hook



TR-19
2" Bolt-In End



TR-21
2" Bolt-In End with Defender



TR-22
2" Snap Hook



TR-22D
2" Clip-In and Bolt-In End



TR-22-75
3" Snap Hook



TR-23
2" Bolt-In End Flat



TR-23B
2" Bolt-In End Bent



TR-23-75
3" Bolt-In End



TR-29
2" Bolt-In End



AR-P03
Hook

Ratchet



RBS-01
3" Ratchet



RBS-02-45
45mm Ratchet



RBS-02-50
50mm Ratchet



RBS-03
3" Ratchet

Slide Bar



TR-18
2" Slide Bar (Flat/Bent)



TR-20
3" Slide Bar (Flat/Bent)



TR-28
2" Z Plate



TR-30
Strap Loop



AR-P01
1" Slide



SN-001
1" Slide

Push Button Buckle



PB-02
Push Button Buckle

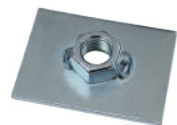


PB-02T
Tongue

Square Plate with Nut



SG-39
80.5*50.5mm



SG-55
55*40mm



SG-65
65*65mm

Metal Parts

New Era Ultra Lightweight Latch & Link !!

- New patented light weight latch and link are made by Precision Progressive Stamping machines.
- High tensile alloy steel with heat treated and quenched for highest strength like forging but at much lighter weight than forging.



TR-10F

PATENTED

- TR-10F 3" stamping Latch is at 42% lighter than TR-10 3" forged latch .



TR-10



TR-11F

PATENTED

- TR-11F 2" stamping Latch is at 14% lighter than TR-11 2" forged latch .



TR-11



TR-10F



TR-10



Made by	Stamping	forging
WGT/G	295.5g 🏆	507.0g
WGT/lbs	0.651lbs 🏆	1.118lbs
Lead time	quick 🏆	slow

TR-11F



TR-11



Made by	Stamping	forging
WGT/G	193.5g 🏆	225.0g
WGT/lbs	0.4271lbs 🏆	0.496lbs
Lead time	quick 🏆	slow

TR-12F

PATENTED

- TR-12F 2" stamping Link is at 31% lighter than TR-12 2" forged link .



TR-12



TR-12F



TR-12



Made by	Stamping	forging
WGT/G	64.0g 🏆	92.5g
WGT/lbs	0.141lbs 🏆	0.204lbs
Lead time	quick 🏆	slow

New Quick & Easy Adjustment Integrated Latch & Link

TR-35

- 2" Integrated Adjustable Latch with Web Guard



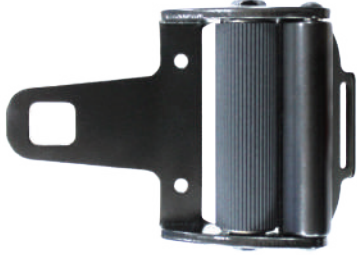
TR-39

- 3" Integrated Adjustable Latch with Web Guard



TR-36

- 2" Integrated Adjustable Link



TR-40

- 3" Integrated Adjustable Link



New Era Ultra Lightweight Buckle & Adjuster !!

TB-12

PATENTED

- TB-12 Lightweight Dual Release(DR) and Easy Clip-In (ECI) Turn Buckle is at 35% lighter than TB-09 buckle.



TB-09

- Dual Release(DR) Buckle.



TR-14G

PATENTED

- TR-14G New 3" Quick Release Lightweight Adjuster is at 32% lighter than TR-14S steel adjuster.



TR-14S

- 3"Roller Adjuster W/Spring



NEW



	TB-12	TB-09
WGT/G	160.0g	244.6g
WGT/lbs	0.35lbs	10.541lbs

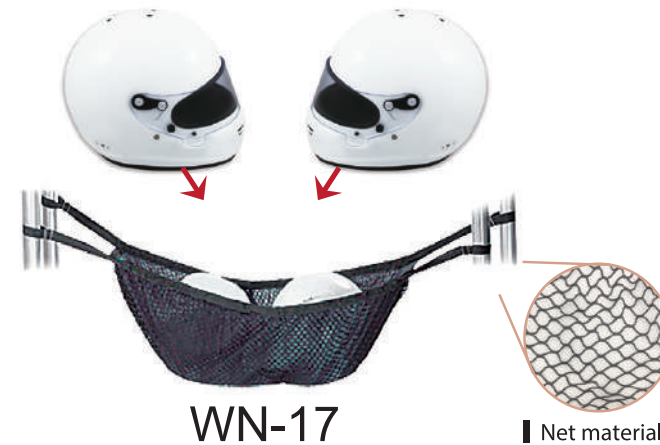
NEW



	TR-14G	TR-14S
WGT/G	99.2g	146.0g
WGT/lbs	0.21lbs	0.32lbs

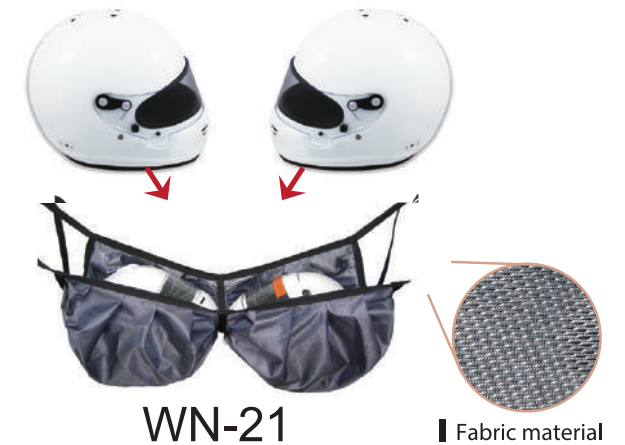
Helmet Net

- Beltenick® Rally helmet net. Keep your expensive rally helmets in good condition with a helmet hammock behind the seats.
- Attaches to the roll cage and hold 2 helmets.



WN-17

Net material



WN-21

Fabric material

Arm Restraint

AR-01

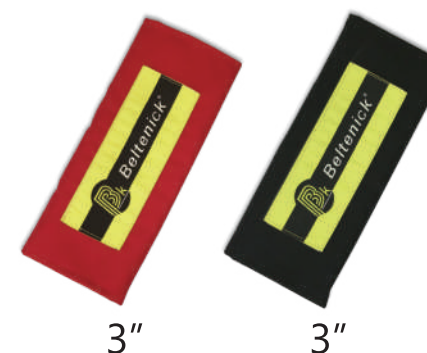
Colours : Black Blue Red



Harness Pad

HP-01

Colours : Black Red



3"



3"



HP-02

Colours : Black Red



2"





2"

Window Net

WN-40



- Professional racing net with quick release and quick front strap adjustment to fit with several seat positions.
- Designed to be mounted on the left or on the right side of the driver.

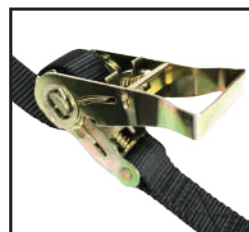
Colours :  
Black Red



WN-37

- Roll Cage Net
- SFI 37.1 Certified
- 1" Polyester Webbing
- Quick Release

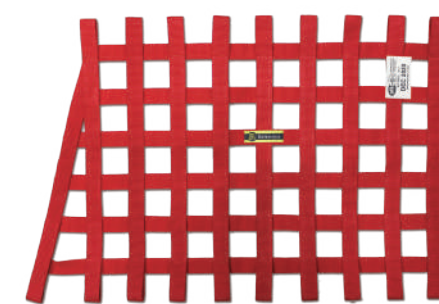
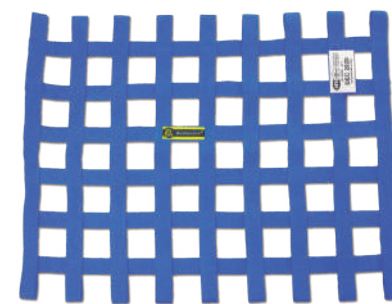
Colours :  
Black Red



WN-10

Ribbon Window Net

- 1" wide webbing and double overlap construction provide a strong durable net.



Black Silver Blue Green Red Orange Yellow Purple Fluo Pink

Window Net Mounting Kit

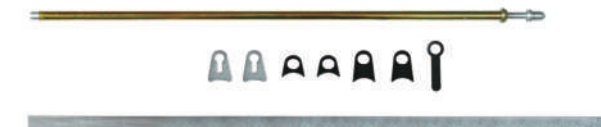
WM-6

- Spring Loaded Pin With Round Bar



WM-7

- Spring Loaded Pin With Flat Bar



WM-8

- GM Buckle Type With Flat Bar



WM-9

- Latch-Style (Flat Bar) With Flat Bar



WM-10

- Spring Type (Short)-(a)49cm,(b)55cm With Round Bar



WM-11

- Spring Type (Long)-(a)63.5cm,(b)70cm With Round Bar



WM-12

- Latch-Style (Round Bar) With Flat Bar



WM-13

- Heavy Duty Latch Style (Flat Bar) With Flat Bar

