



Custom Designed Tire Machinery
Industrial Automation
Robotized Solutions



Contents

Basic Facts	5
Machines	7
Cutting	9
GT Painting	11
Mold Cleaning	13
Quality and Safety	14
References and About Us	15

Quality is non-negotiable

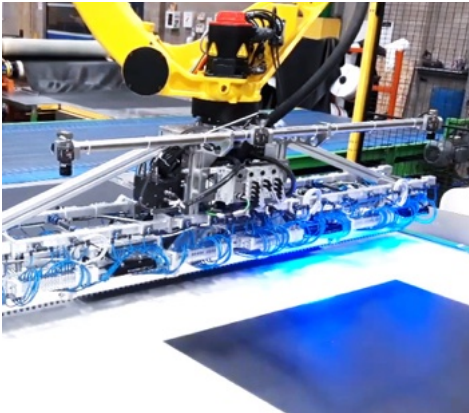
As the ISO 9001 certified business, we always stand behind our robustly built machines, providing generous warranty and after sales support. We don't shy away from travelling. We consider online support essential.

Design & Development

Our own mechanical design capacities deploying the state-of-the-art 3D modelling and FEA simulations, industrial machine control software development capabilities, robotic coding and real time modelling, prototyping, dry and wet trial testing set us apart and drives the competitive edge of our products and solutions bringing tangible value to our customers.

15 % of our employees are designers, programmers.

2 % of our annual turnover is spent on our design and development teams' training and design tooling.



Established in 1995
as an independent company
spun off Continental-Barum
Continuous operation since
1965 (Barum prototype
workshop)

Developing and
manufacturing complex tire
machinery, equipment,
automation, and robotics

€ 4.0—6.5 million turnover
55 associates

Own design and engineering
office

- Mechanical
- Electrical
- PLC
- Robotics

Own machining and assembly
plant, paint shop

ISO 9001 : 2015 Certified
ISO 14001:2015 Certified

Based in Otrokovice, Czech
Rep. Erecting and
commissioning globally

Basic Facts



Video ▶

VÝROBCE :



OTROKOVICE

Výroba strojů a zařízení

TYP

ODVÍJEČI TEX. KOP.

ROK VÝROBY

2001

Č. V.

X 07099 B2

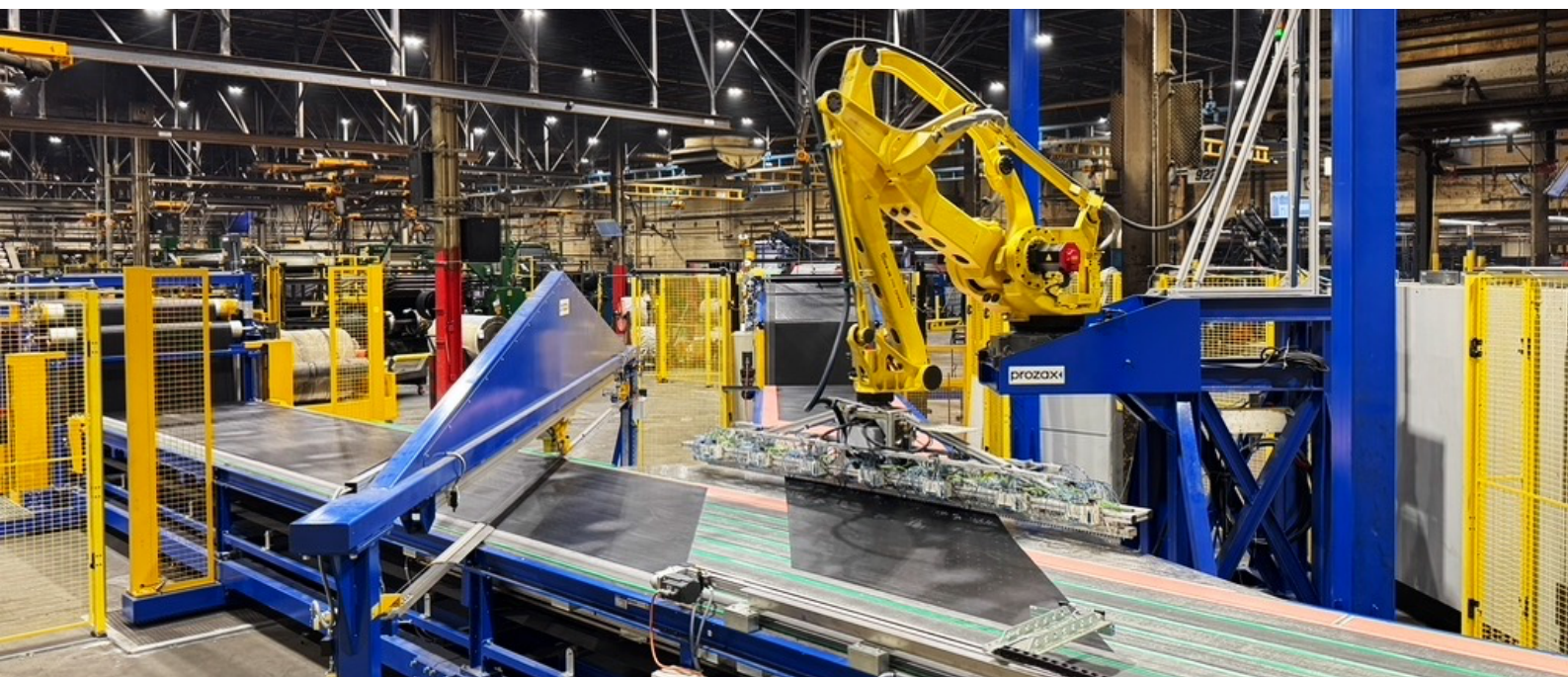


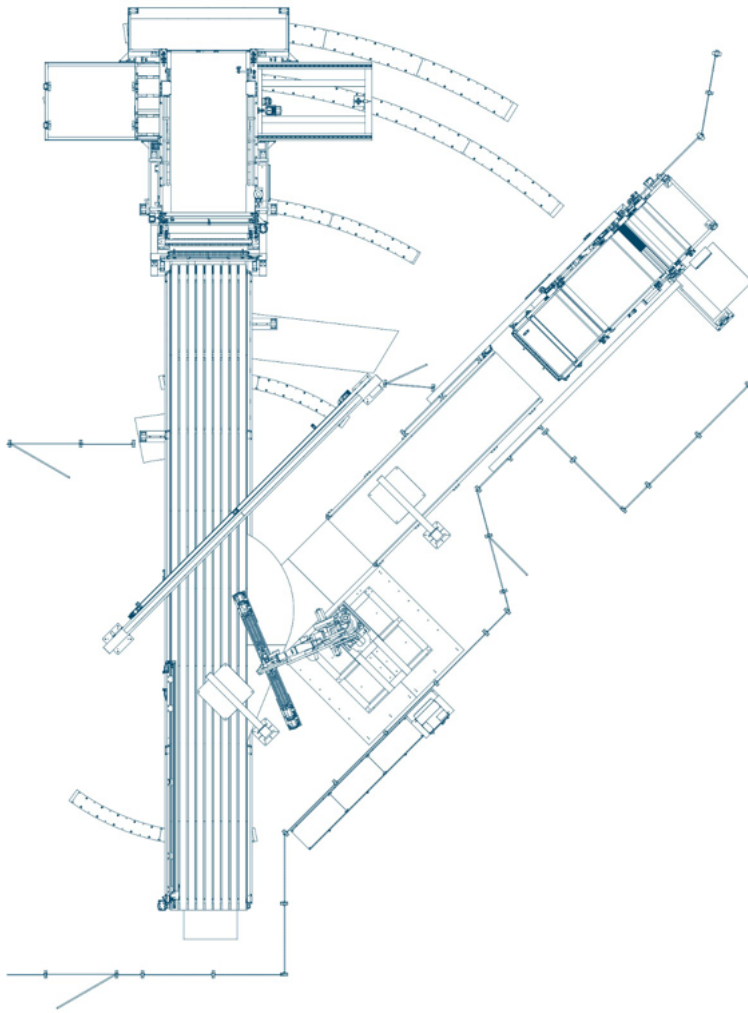
MADE IN CZECH REPUBLIC

Being loyal to our original mission to develop prototype machines and equipment for the tire industry, we deploy own R&D, innovate, collaborate with our customers' plant and technical teams, and introduce new solutions.

Fabric and steel cutting, robotized splicing	Bicycle	PCR	TBR	Agri	
Green Tire painting (robotic)		PCR	TBR	Agri	OTR
Dry ice mold cleaning—robotic online and offline		PCR		Agri	
Robotic handling operations, such as tire stacking, bead wire tape wrapping, and tread booking		PCR	TBR	Agri	Agri
Sidewall repair press				Agri	
Final finish inspection stations				Agri	
Tire building machines 1 st and 2 nd stage				Agri	OTR
Semifinished product cassettes, transport carts		PCR	TBR	Agri	
Slitting, duplexing, other		PCR	TBR	Agri	OTR

All machines are customizable and can be build to exact customer specification.





Off Highway—
Agricultural, Industrial, OTR
TBR, PCR, Bicycle
Radial and cross-ply

Continuously adjustable
18—90° cutting angle
Automatic resetting at
changeovers

Robotic splicing—
machine vision assisted

Butt splicing or
tight tolerance overlap

Fully automated let-off and
wind-up. Automatic material
threading. Belt duplexing
optional

Bidirectional cutting for
highest productivity

Single manpower operation

Increasing workforce and
work floor safety by
multilayer electronic fencing
and scanning

Building cutters since 2001

Fabric
Cutters



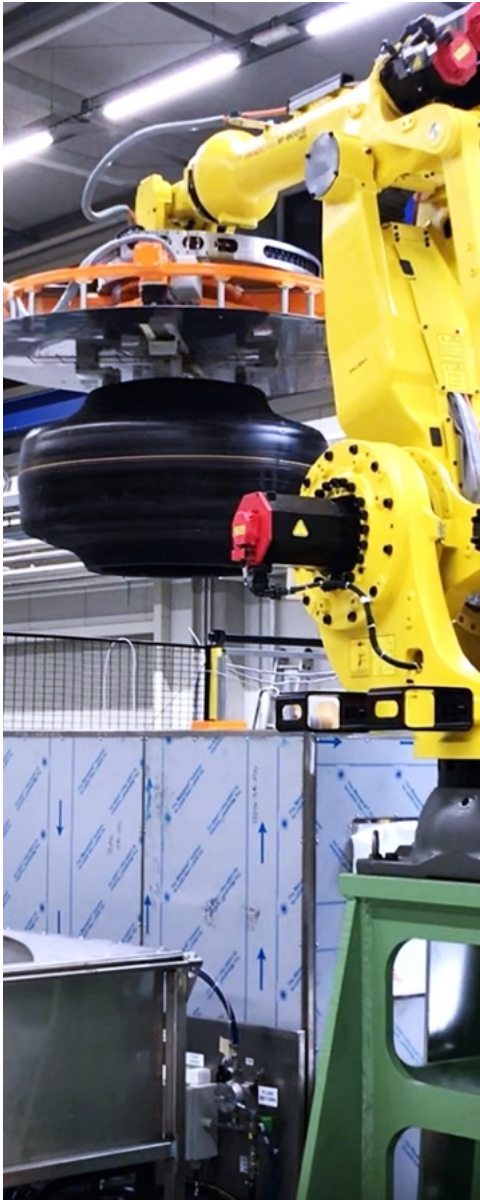
Video

Working end-to-end

As an entirely global supplier, we ship the machines from our manufacturing plant in Otrokovice, Czech Republic to the tire makers in Europe and overseas.

The turnkey installation and commissioning is always supported by our own engineering team.





Off Highway—
Agricultural, Industrial, OTR
TBR, PCR. Radial and cross-ply
Self- & non-self-standing

8—54" bead diameter
2,700 kg payload
3,000 mm OD
6 chuck finger gripper

Automated—multiple robotic assisted for
GT handling and paint application

Single or multiple ventilated booths

Automatic loading/unloading
(conveyor belt or docking station)

Recipe selection—
Automated barcode, RFID, or
Machine vision assisted

Airless or Airbrush
Automatic spray nozzle cleaning
Multiple paint supply circuits
Precision pumping systems

Precise flow metering

Automatic gripper and chuck finger cleaning

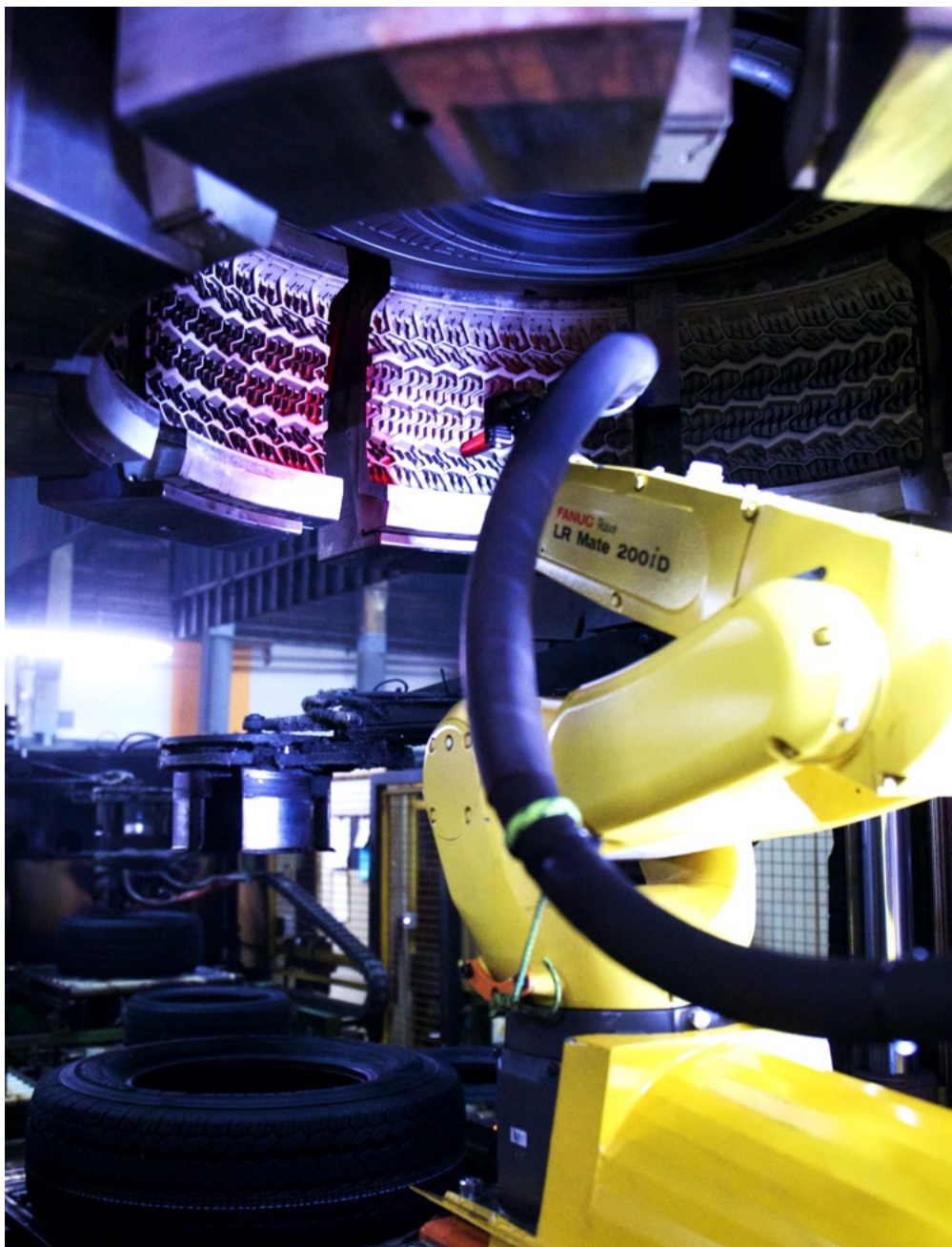
Increasing workforce and work floor safety by
multilayer electronic fencing and scanning

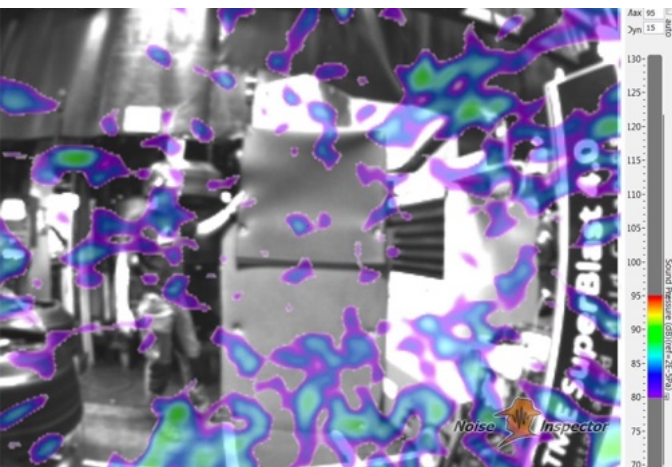
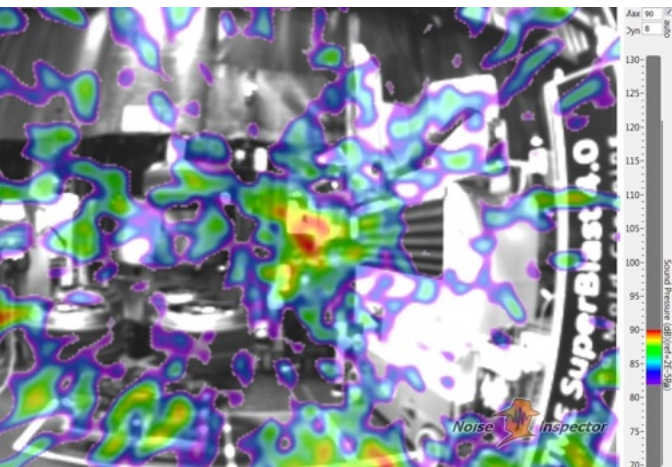
Building GT painters since 2010

GT
Painting



Video ◀





Dry Ice and Laser
Excellent for spring vents

Segmented and 2-piece molds

Off Highway—
Agricultural, Industrial, OTR
TBR, PCR.

Robotic online cleaning—
bringing the proven dry ice
technology from mold shop to
the press, thus saving downtime
and increasing productivity

Robotic offline cleaning for large
molds and frequent changeovers

Robust noise control—custom
designed composite sandwich
structure featuring advanced
materials keeping the noise level
for operators' comfort and safety
meeting the exposure limits at
the control panel.

Laser technology for offline
cleaning—4JET 53xxx Series
water cooled 100 MJ pulse laser
system

On-Site Dry Ice production
reducing operational cost via
liquid CO₂ bulk supply
(recommended)

Building cleaners since 2017

Mold Cleaning

Videos ◀



PCR online



OHT offline

Quality, Safety and Care for the Environment

Prozax is proudly ISO 9001:2015 and ISO 14001:2015 certified business. Our staff is regularly trained, and the quality standards and processes are periodically audited.

Our personnel training is not limited to the quality management but very naturally includes the technical skills and knowledge development for design, power electronics, programing, coding and the HSE.

Our associates' safety belongs to our utmost priorities. Safe and healthy work floor environment provides engaging working conditions and drives quality.



Building
trust
together.

Certificate

CQS has issued an IQNET recognized certificate that the organization:

PROZAX, s.r.o.

Letiště 1939, 765 02 Otrokovice, Czech Republic

has implemented and maintains a
Environmental Management System

for the following scope:

**Design and production of engineering construction parts and one-purpose-made machines
including robotic solutions for the rubber industry**

which fulfils the requirements of the following standard:

ISO 14001:2015

Issued on: **2025 - 03 - 06**

Expires on: **2028 - 03 - 05**

Registration Number: **CZ - 29/2025**

Alex Stoichitoliu
Alex Stoichitoliu
President of IQNET

Tomáš Hruška
Tomáš Hruška
President of CQS



This attestation is directly linked to the IQNET Member's original certificate and shall not be used as a stand-alone document.

IQNET Members*:
AENOR Spain, AFNOR Certification France, APCER Portugal, CCC Cyprus, CISO Italy, CQC China, CQM China, CQS Czech Republic, CRO Cert Croatia, DQS Holding GmbH Germany, EABLE Certification Group USA, ICAN Israel, IFONORMA Venezuela, ICONTEC Colombia, ICS Bosnia and Herzegovina, INTECO Costa Rica, IRAM Argentina, JQA Japan, KPC Korea, LSQA Uruguay, MIRTEC Greece, MSZT Hungary, Nemko AS Norway, NSAI Ireland, NYCE Mexico, PCBC Poland, Quality Austria Austria, SII Israel, SIG Slovenia, SIRIM GAS International Malaysia, SGS Switzerland, SRAC Romania, TSE Türkiye, YUGOS Serbia

* The list of IQNET Members is valid at the time of issue of this certificate. Updated information is available under www.iqnet-certification.com

CQS z.s.

Prosecká 412/74, 190 00 Praha 9 - Prosek
Czech Republic

CQS is the Certification Body No 3029 accredited according to Standard EN ISO/IEC 17021-1:2015
by the Czech Accreditation Institute for the Certification of Management Systems



CERTIFICATE

No.: CQS 2040/2024

CQS certifies that the Quality Management System of

prozax

PROZAX, s.r.o.

Letiště 1939, 765 02 Otrokovice, Czech Republic

has been assessed and found to be in conformity with the requirements of

EN ISO 9001:2015

with respect to the following processes:

- **Design and production of engineering construction parts
and one-purpose-made machines including robotic solutions
for the rubber industry**

Expiry date: 23. 03. 2027
Certification decision: 04. 03. 2024
Date of issue: 24. 03. 2024

Jana Olšanská
Jana Olšanská
Head of Certification Body



CQS Members*:

Elektrotechnický zkušební ústav, s.p., Fyzikálně technický zkušební ústav, s.p., Institut pro testování a certifikaci, a.s.,
Strojářský zkušební ústav, s.p., Technický a zkušební ústav stavební Praha, s.p., Textilní zkušební ústav, s.p.

* A CQS member list valid at the time of issue of the certificate. Current list is available at www.cqs.cz

We value our customers' recognition

Our valued customer base include tire makers in Europe, United States, India and worldwide.

Among other these are —
Continental
Yokohama OHT (ATG)
Yokohama TWS (Mitas)
Balkrishna Industries (BKT)
Titan Tire
Toyo Tires
Belshina
Cordiant
Nexen
Rubena
Apollo
Fate
...

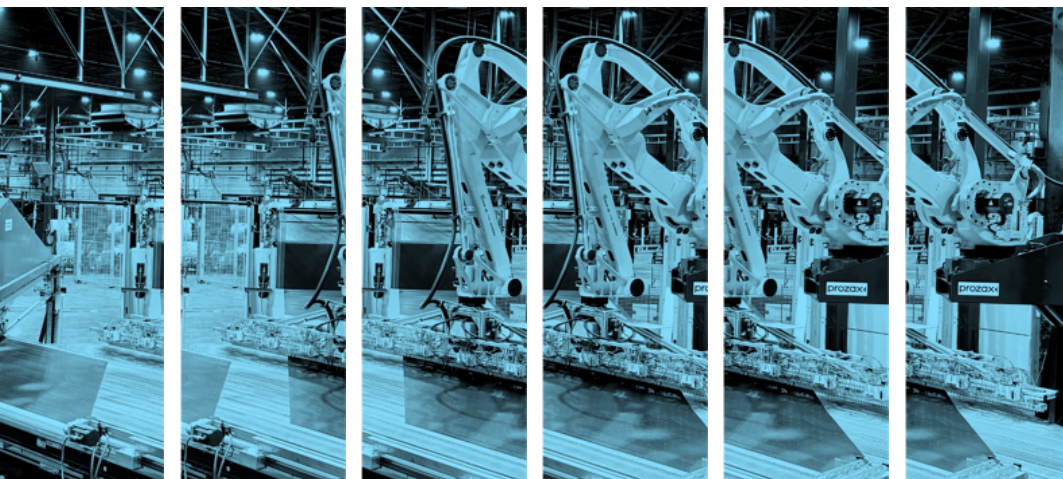
Beginning our passage in 1965, we have started as a prototype workshop of one of the largest tire makers in the region.

Deep-rooted in the tire industry, over the years, we have accumulated enormous experience and knowledge by working for almost a century old Central European tire hub established by Tomas Bata in the 1930s.

Since spinning off by the management buyout in 1995, we took on our independent path under the name of Prozac standing for the “Prototype machines” in Czech.

By dedication, systematic hard work and courage of the teams of our valued associates, we have gradually grown into the well recognized, export orientated, custom designed tire machinery manufacturer offering automated solutions to the global tire industry.

How did our journey begin?



PROZAX, s.r.o.

Letiště 1939

Otrokovice 765 02

Czech Republic

+420 577 512 462

info@prozax.cz



Trusted Supplier of Own, Custom Designed, and Contract Fabricated Tire Manufacturing Machinery, Industrial Automation and Robotics

Prozax manufactures, supplies and installs core and auxiliary technology to the tire manufacturing and support operations, industrial automation and integrated robotics solutions.

Building up on 30 years proven track record it makes own and custom designed specialized machines and equipment to the tire and rubber industry.

Supported by its own design shop, multiple engineering teams including software programmers, and the dry ice online and offline mold cleaning, Prozax is best suited to deliver added value to the tire industry.