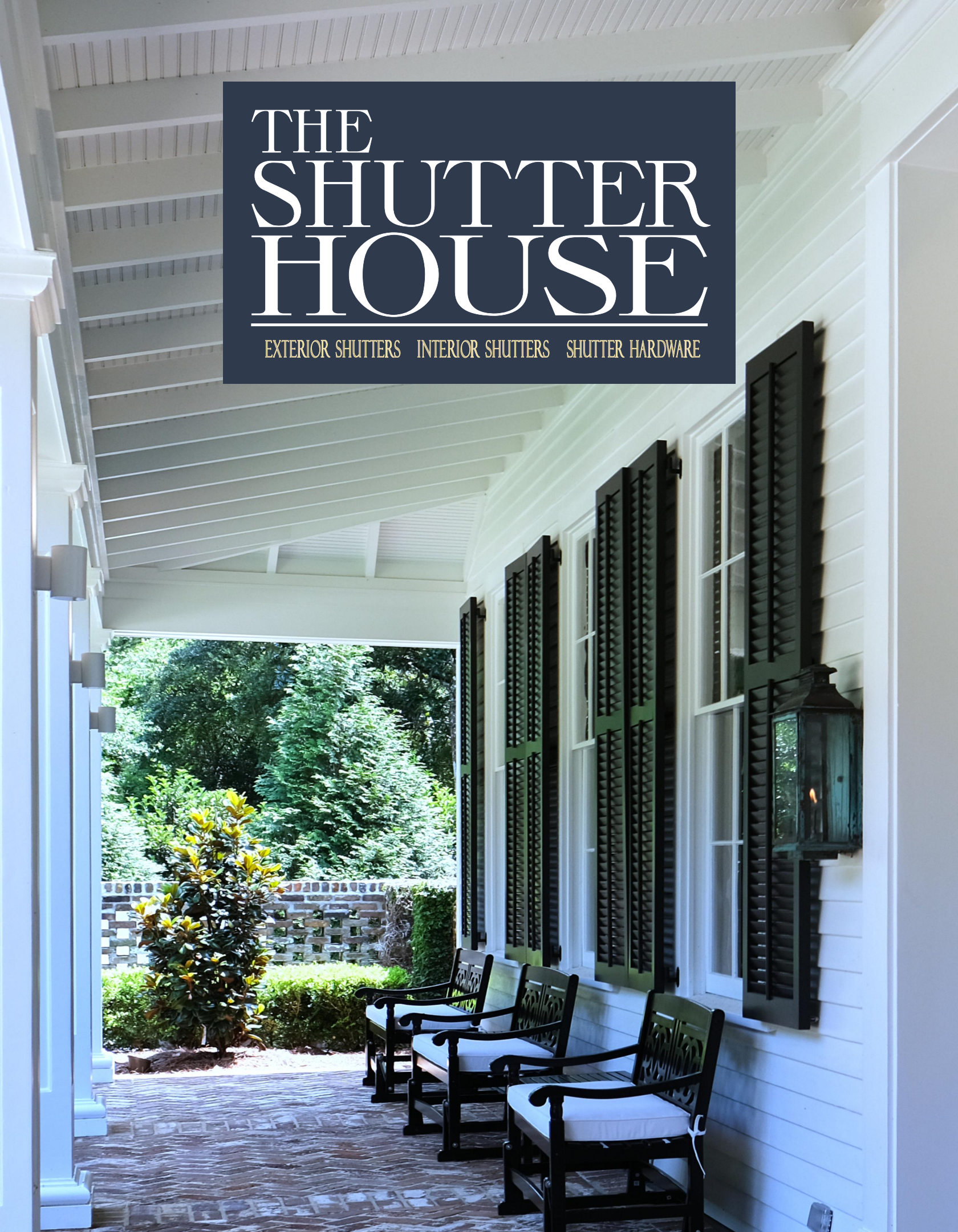


THE SHUTTER HOUSE

EXTERIOR SHUTTERS INTERIOR SHUTTERS SHUTTER HARDWARE





Nominal Thickness

Louvered Shutters1 1/4"
 Board and Batten Shutters1 1/4"
 Panel Shutters1"

Standard Widths

Louvered Shutters9" - 30"
 Raised Panel Shutters.....12" - 30"
 Bahama Shutters12" - 119"
 Custom widths available by special inquiry.

Standard Lengths

All shutter styles24" - 120"
 Custom lengths available by special inquiry.

Installation

To be installed in either a fixed or operable condition in accordance with manufacturer's recommendations, with no nailing or screwing through face of shutter. See pages 18-19 for functional installation methods.

Material

High density structural PVC and/or protruded fiberglass and/or proprietary composite material. All slats and louvered side rails to be fiberglass.

Finish

Two part acrylic urethane cured by means of microwave thermology and direct infrared heat offered in 31 standard colors. (See standard color chart on page 11). Custom colors are available by special inquiry.

Hardware

Complete line of standard and custom functioning shutter hardware available. See page 16-17 for hardware.

Warranty

Lifetime warranty on structural components and against manufacturer defect limited to original purchaser when used in residential applications. Twenty year warranty on structural components and against manufacturer defect when installed on Commercial structures. Fifteen year warranty on factory applied finish.



True Louver/Raised Panel Combination

Flat Panel

True Louver with Faux Control Rod

True Louver

V-Groove Panel

Raised Panel



Board & Batten

V-Groove

True Louver/Raised Panel
Combination

True Louver

Raised Panel

Nominal Thickness

Louvered Shutters1 1/4" or 1-3/4"
 Raised Panel Shutters.....1 1/4"
 Board and Batten Shutters1 1/4"

Standard Widths

All shutter styles9" - 30"
 Custom widths available by special inquiry.

Standard Lengths

All shutter styles13 1/2" - 120"
 Custom lengths available by special inquiry.

Installation

To be installed in either a fixed or operable condition in accordance with manufacturers recommendations, with no nailing or screwing through face of shutter. See pages 18-19 for functional installation methods.

Material

High quality solid core PVC composite with marine grade aluminum side support.

Finish

Industrial strength high quality factory finish offered in 31 standard colors. (See standard color chart on page 11). Custom colors are available by special inquiry.

Hardware

Complete line of standard and custom functioning shutter hardware available. See page 16-17 for hardware.

Warranty

Lifetime warranty against manufacturer defects.





Nominal Thickness

- Louvered Shutters.....1 1/4"
- Board and Batten Shutters1", 5/8" Batten
- Panel Shutters1"

Standard Widths

- All shutter styles9" - 30"
- Custom widths available by special inquiry.

Standard Lengths

- All shutter styles13 1/2" - 120"
- Custom lengths available by special inquiry.

Installation

To be installed in either a fixed or operable condition in accordance with manufacturer's recommendations, with no nailing or screwing through face of shutter. See pages 18-19 for functional installation methods.

Material

High quality solid core composite materials.

Finish

High quality two part acrylic urethane finishing process with UV inhibitors offered in 31 standard colors. (See standard color chart on page 11). Primed ready-to-paint finish available. Custom colors are available by special inquiry.

Hardware

Complete line of standard and custom functioning shutter hardware available. See page 16-17 for hardware.

Warranty

10 year warranty against any defects in materials and factory-applied finish.



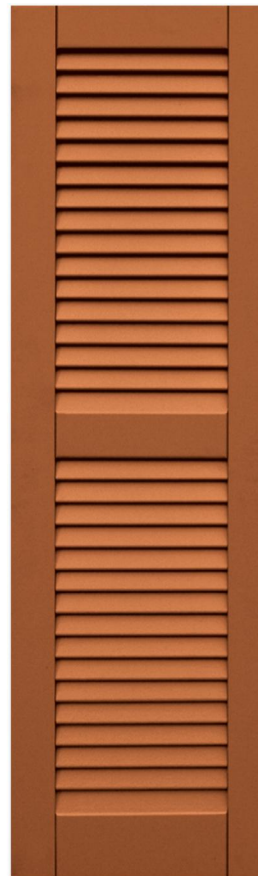
Board & Batten



Flat Panel



True Louver/Raised Panel
Combination



True Louver



V-Groove Panel



Board & Batten

Raised Panel

True Louver

True Louver/Raised Panel
Combination

V-Groove Panel

Nominal Thickness

Louvered Shutters.....1"
 Raised Panel Shutters1"
 Board and Batten Shutters1" Board;
 1" Batten

Standard Widths

All shutter styles9" - 30"
 Custom widths available by special inquiry.

Standard Lengths

All shutter styles.....13 1/2" - 120"
 Custom lengths available by special inquiry.

Installation

To be installed in either a fixed or operable condition in accordance with manufacturer's recommendations, with no nailing or screwing through face of shutter. See pages 18-19 for functional installation methods.

Material

High quality hand-selected Sapele Mahogany

Finish

Shutters are offered in raw paint grade or stain grade material. Primed ready-to-paint finish available. Custom colors are available by special inquiry.

Hardware

Complete line of standard and custom functioning shutter hardware available. See page 16-17 for hardware.

Warranty

Lifetime warranty against manufacturer defects.





Nominal Thickness

Louvered Shutters.....1”
 Raised Panel Shutters1”
 Board and Batten Shutters1” Board;
 1” Batten

Standard Widths

All shutter styles 9” - 30”
 Custom widths available by special inquiry.

Standard Lengths

All shutter styles. 13 1/2” - 120”
 Custom lengths available by special inquiry.

Installation

To be installed in either a fixed or operable condition in accordance with manufacturer’s recommendations, with no nailing or screwing through face of shutter. See pages 18-19 for functional installation methods.

Material

High quality hand-selected Western Red Cedar.

Finish

Shutters are offered in raw paint grade or stain grade material. Primed ready-to- paint finish available. Custom colors are available by special inquiry.

Hardware

Complete line of standard and custom functioning shutter hardware available. See page 16-17 for hardware.

Warranty

Lifetime warranty against manufacturer defects.



Board & Batten



Raised Panel



True Louver/Raised Panel
 Combination



True Louver



V-Groove Panel



Board & Batten

Raised Panel

True Louver

True Louver/Raised Panel
Combination

V-Groove Panel

Nominal Thickness

Louvered Shutters.....1"
 Raised Panel Shutters1"
 Board and Batten Shutters1" Board;
 1" Batten

Standard Widths

All shutter styles9" - 30"
 Custom widths available by special inquiry.

Standard Lengths

All shutter styles.....13 1/2" - 120"
 Custom lengths available by special inquiry.

Installation

To be installed in either a fixed or operable condition in accordance with manufacturer’s recommendations, with no nailing or screwing through face of shutter. See pages 18-19 for functional installation methods.

Material

High quality hand-selected Red Grandis.

Finish

Shutters are offered in raw paint grade or stain grade material. Primed ready-to- paint finish available. Custom colors are available by special inquiry.

Hardware

Complete line of standard and custom functioning shutter hardware available. See page 16-17 for hardware.

Warranty

Lifetime warranty against manufacturer defects.





Nominal Thickness

Louvered Shutters.....1"
 Raised Panel Shutters1"
 Board and Batten Shutters1" Board;
 1" Batten

Standard Widths

All shutter styles 9" - 30"
 Custom widths available by special inquiry.

Standard Lengths

All shutter styles. 13 1/2" - 120"
 Custom lengths available by special inquiry.

Installation

To be installed in either a fixed or operable condition in accordance with manufacturer's recommendations, with no nailing or screwing through face of shutter. See pages 18-19 for functional installation methods.

Material

High quality hand-selected Cypress.

Finish

Shutters are offered in raw paint grade or stain grade material. Primed ready-to- paint finish available. Custom colors are available by special inquiry.

Hardware

Complete line of standard and custom functioning shutter hardware available. See page 16-17 for hardware.

Warranty

Lifetime warranty against manufacturer defects.



Board & Batten



Raised Panel



True Louver



True Louver/Raised Panel
 Combination



V-Groove Panel



Board & Batten

Raised Panel

True Louver

True Louver/Raised Panel
Combination

V-Groove Panel

Nominal Thickness

Louvered Shutters.....1"
 Raised Panel Shutters1"
 Board and Batten Shutters1" Board;
 1" Batten

Standard Widths

All shutter styles9" - 30"
 Custom widths available by special inquiry.

Standard Lengths

All shutter styles.....13 1/2" - 120"
 Custom lengths available by special inquiry.

Installation

To be installed in either a fixed or operable condition in accordance with manufacturer’s recommendations,with no nailing or screwing through face of shutter. See pages 18-19 for functional installation methods.

Material

High quality hand-selected Pine.

Finish

Shutters are offered in raw paint grade or stain grade material. Primed ready-to- paint finish available. Custom colors are available by special inquiry.

Hardware

Complete line of standard and custom functioning shutter hardware available. See page 16-17 for hardware.

Warranty

Lifetime warranty against manufacturer defects.





Nominal Thickness

All Shutters.....1" thick on all sides

Standard Widths

Louver Styles5 3/4", 8 1/2", 9 1/4",
 11", 12", 13" 14 1/2",
 16 1/2", 18"
 Raised Panel Styles12", 14 1/2", 16
 1/2", 18"
 Board & Batten (Joined)7 3/4", 10 1/2",
 14", 17 1/2"
 Board & Batten (Spaced)7 3/4", 12", 16,
 1/4", 20 1/2"

Standard Lengths

Louver Styles18" - 144"
 Raised Panel Style (Single)18" - 55"
 Raised Panel Style (Double)22" - 110"
 Raised Panel Style (Triple)33" - 144"
 Board & Batten Style18" - 144"

Installation

To be installed in a fixed condition in accordance with manufacturer's recommendations.

Material

Maintenance-free UV-Stabilized polypropylene copolymer. Finish Molded through color. Colors 20 colors available.

Hardware

Tapcon screws. Decorative hardware optional. See page 16-17 for hardware selection.

Warranty

40 year warranty against cracking, splitting or fading.



Board & Batten



Raised Panel



Raised Panel
Three Equal Sections



True Louver



True Louver/Raised Panel
Combination

Nominal Thickness

All shutter styles 1 1/4"

Standard Widths

All shutter styles12" - 120", in 1/8" increments

Custom widths available by special inquiry.

Standard Lengths

All shutter styles18 1/2" - 72", in 1/8" increments

Custom widths available by special inquiry.

Installation

To be installed in either a fixed or operable condition in accordance with manufacturer's recommendations, with no nailing or screwing through face of shutter.

Material

High quality aluminum materials

Finish

See standard color chart below.

Custom colors are available by special inquiry

Hardware

Complete line of standard and custom functioning shutter hardware available. (See page 16-17 for hardware.)

Warranty:

5 year warranty.



Standard COLOR Chart - Custom Colors Option Available Upon Request

Black 632	Charleston Green 653	Rookwood Shutter Green 654	Roycraft Bottle Green 655	Evergreen 638	Rookwood Dark Green 656	Forest Green 633	Pine 644
Midnight Sky 639	Deep Sea Blue 637	Tempest Blue 666	Hamilton Blue 667	Harbor 645	Cascade 647	Plum Creek 643	Bordeaux 640
Roycraft Copper Red 668	Board & Batten Red 650	Polished Mahogany 657	Federal Brown 635	Walnut 641	Rookwood Med. Brown 658	Weathered Shingle 660	Craftsman Brown 659
Sand 642	Hammered Silver 661	Roycraft Pewter 663	Pewter 646	Chelsea Gray 662	Roycraft Mist Gray 664	White 631	

Please Note: Actual product's colors may vary from images shown on brochure.



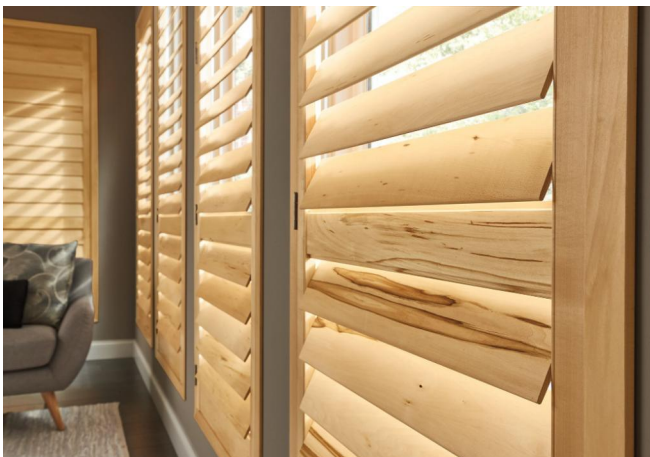
Hand-Crafted Shutters

Plantation Shutters are the ultimate investment in window coverings. Our Shutters are a premium window treatment. Hand-crafted in a range of custom styles, they are an investment in quality that will add warmth and value to your home.



Composite Shutters

Composite Shutters let you experience the essence of real wood in rooms that require a durable or cost-effective solution. Engineered to withstand high humidity, Composite Shutters and are ideal for kitchens, laundry rooms, bathrooms, and other high-humidity rooms.



Natural Wood Shutters

Our Wood Shutters are made exclusively from North American hardwoods. A three-step drying process and a strict adherence to quality standards guarantee the straightest possible wood components. Our shutters can be enhanced with an assortment of paints (custom colors available), stains, options, and upgrades.



Custom Shutters

Plantation Shutters can be designed to fit custom shapes, arches or angled top panels, and sunburst arches. French doors with curved or rectangular cut-outs for handles are also available. Plus, shutters can be specially configured for bay and corner windows.



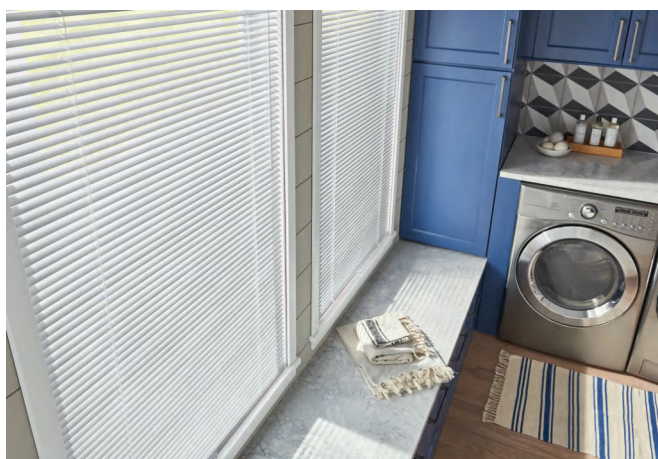
Wood Blinds

Wood blinds are a premium product for the discerning consumer. Set the tone for your living space with Wood Blinds, an elegant complement to a variety of décor styles—from rustic to ultramodern. We offer a wide array of paint and stain colors to allow your clients to enhance one room or an entire home.



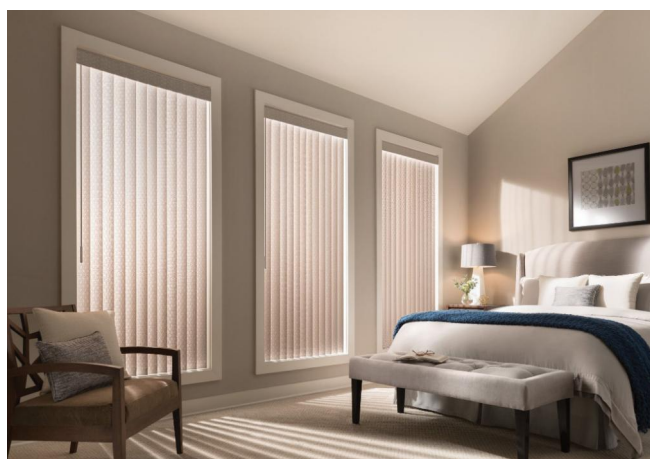
Faux Wood blinds

Well-crafted and durable, Faux Wood and Composite Blinds offer the luxe look of real wood—for less. Our color palette is on trend, but not trendy, and our patented design offers better light blocking capability and increased privacy.



Aluminum Blinds

Aluminum Blinds are a practical, modern-looking window-treatment solution. Available colors include warmer tones and textures, ensuring an on-trend aesthetic. Aluminum blinds dodge dust, stains, and scratches, while also providing maximum light control and legendary dependability.



Vertical Blinds

Vertical Blinds give patio doors and large windows drama and dimension. Fabric Vertical Blinds feature designer-inspired textiles. Light-filtering and room-darkening fabric vanes. Vinyl Vertical Blinds are available in either crown or S-shaped vanes styles. Sheer Vertical Blinds combine the appearance of drapery and the practicality of easy light control. When rotated open, vinyl vanes draped in sheer fabric let in softly diffused light.



Roller Shades

Roller Shades offer beautiful simplicity—and allow your customers to easily manage light and privacy in their homes, keeping rooms comfortable. Available in a wide array of colors, and textures, Roller Shades are a stylish twist on the basic shade.



Solar Shades

Solar Shades offer superior sun control. They are engineered to filter light into the room, while minimizing glare and harmful UV rays. The unique fabrics also allow a view outdoors. As fashionable as they are functional, solar shades are available in a variety of on-trend fabrics and openness levels. Our collection offers 40+ performance fabrics, including Eco-Performance.



Natural Shades

Natural Shades use the sustainability of renewable materials and the beauty of nature to deliver handwoven window treatments that complement a wide range of décor themes and interior design styles. Choose from a variety of shade styles and control types to create the perfect natural window treatment to complement any application.



Cellular Shades

Cellular Shades are among the most popular window treatments available today. They combine on-trend fabrics with a honeycomb-shaped structure to regulate a home's temperature and save energy year-round. Cellular shades are fully customizable, with four cell sizes and four opacity levels in a variety of beautiful fabrics.



Layered Shades

Layered shades (also known as zebra shades) offer a modern take on light control with their alternating bands of sheer and opaque fabrics. When open, the layers align to gently filter light through the sheer material, while closed bands block light for a clean, elegant look. They're in exclusive prints, patterns, and textures to create a unique and distinctly modern feel.



Classic Roman Shades

Crafted from a continuous piece of fabric, Classic Roman Shades exude a traditional style and refreshing simplicity. Choose a shade with flat pleats for a sleek look or opt for a looped fabric for a shade with cascading folds. A range of privacy and light-control options allow you to pick the perfect configuration to match the function of any room.



Pleated Shades

Pleated Shades are all about the fabric. They feature inspired textiles from a broad spectrum of colors, patterns, and textures, all folded into crisp pleats. Liners can be added to create the full range of privacy and light control levels.



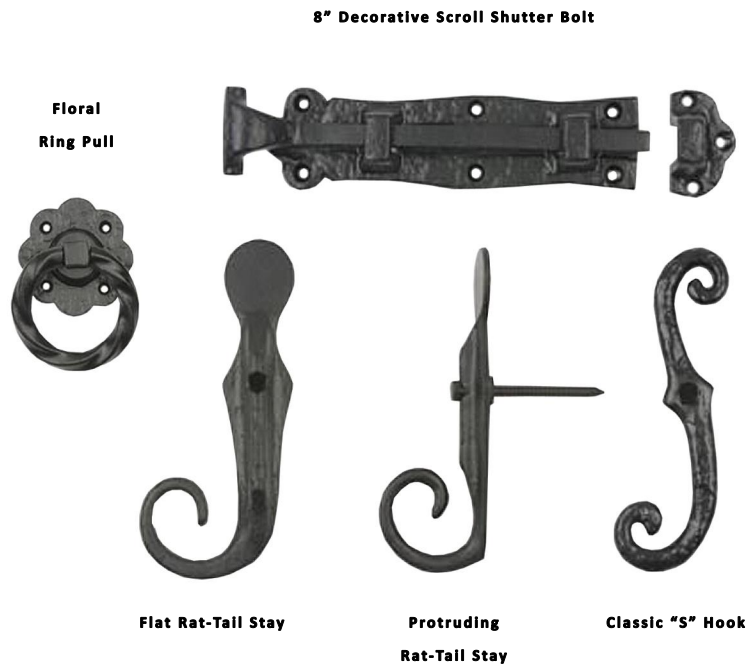
Sheer Shades

Sheer Shades are the next iteration of window treatments. Two layers of sheer fabric protect furniture, flooring, and artwork from damaging UV rays; the supple, lightweight fabric vanes overlap when closed to diffuse the light or block it more completely.

Please inquire about our many other interior window treatment options - including motorization.

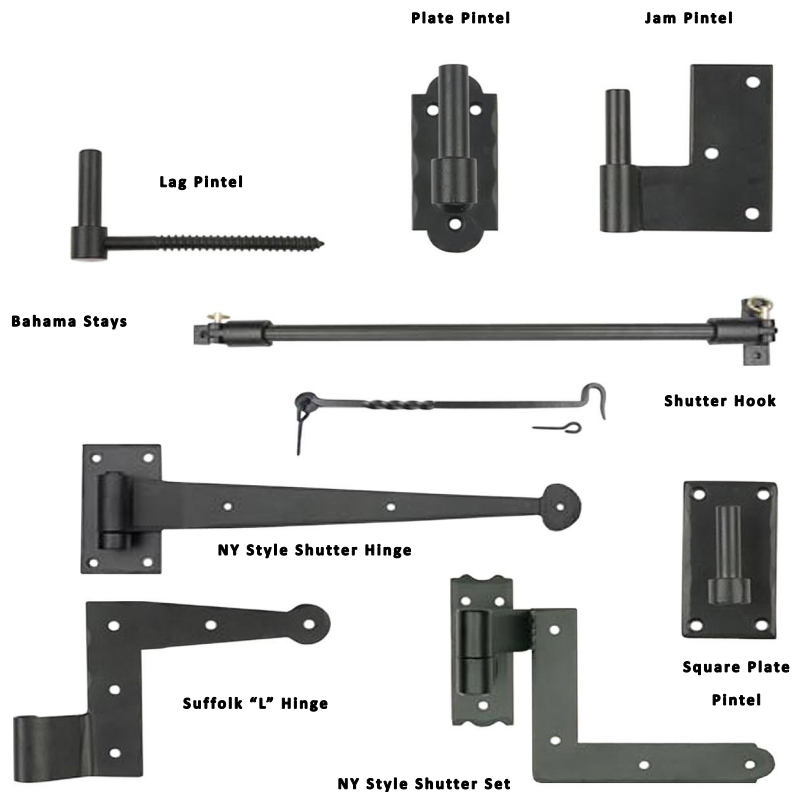


CAST ALUMINUM

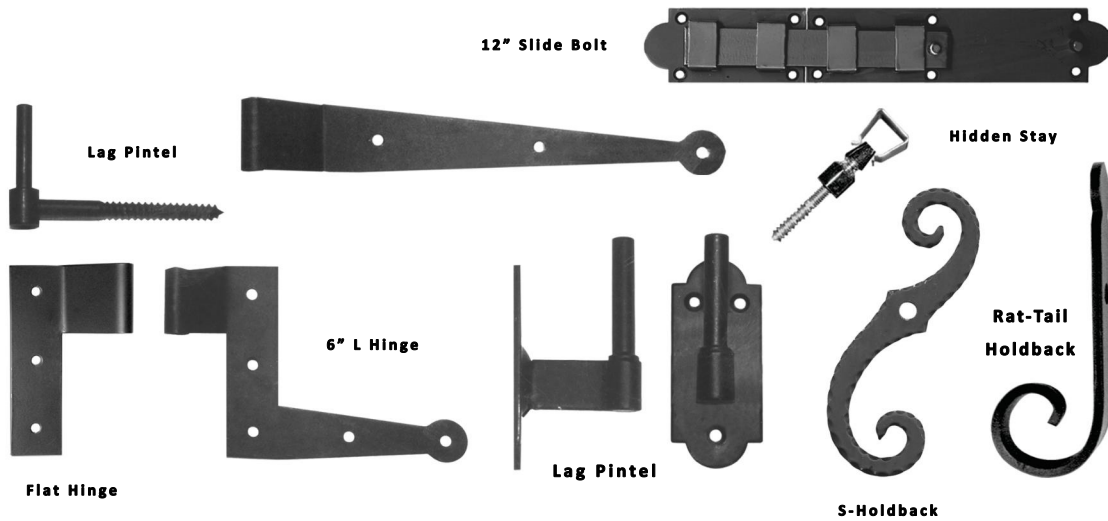


FORGED STEEL

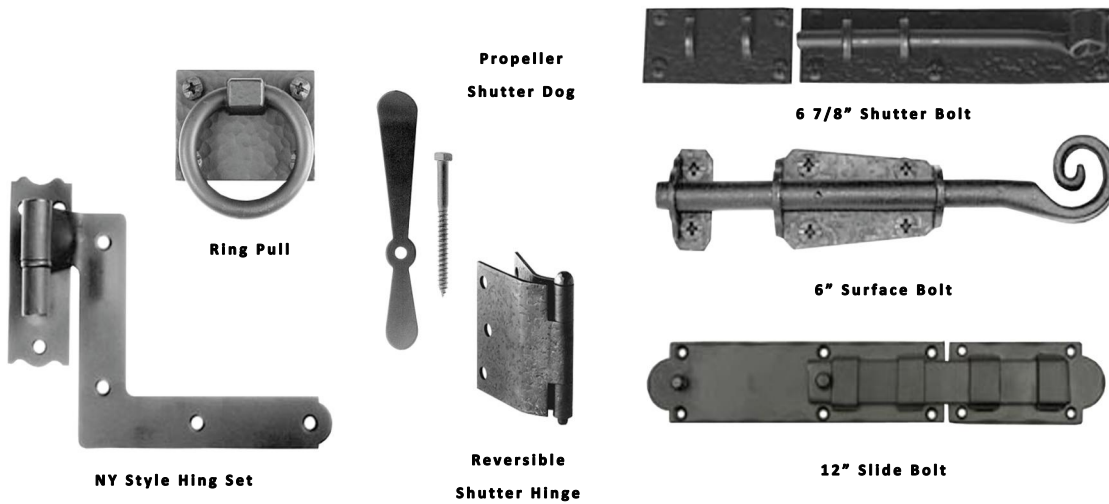
Proper hardware selection is important to ensure proper installation and functionality of your shutter. Plus, the wide variety of styles and materials offered by The Shutter House allows you to individualize your shutter presentation to meet your personal satisfaction.



STAINLESS STEEL



STANDARD STEEL



DECORATIVE HARDWARE



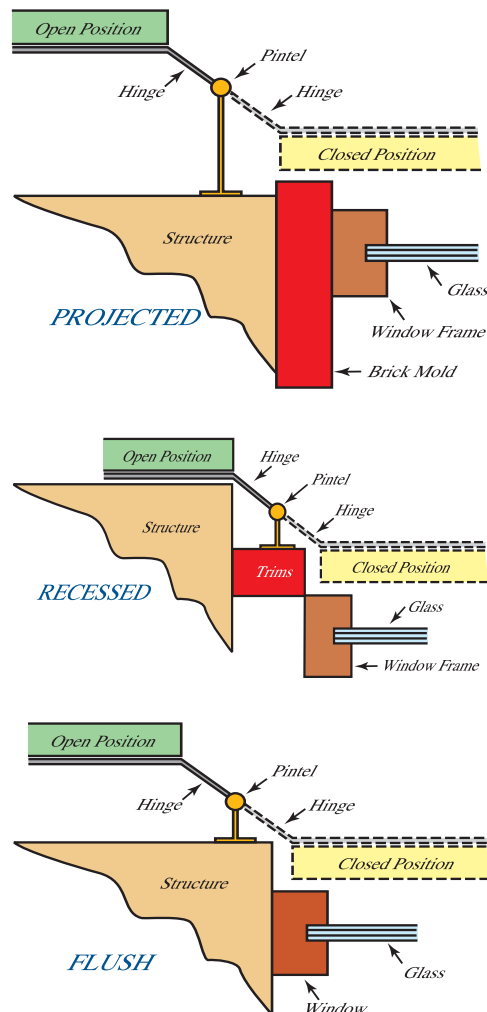
It is important to determine what hardware will be used before measuring for the exterior shutter installation if the shutters will be functioning. Understanding the shutter hardware mounting location is essential to getting accurate measurements. The diagrams at the right and instructions below show the most common exterior shutter installations.

Examples of Common Installation Options

- **Projected** - The exterior shutters are going to function so that in the closed position they will cover the opening. Notice that the pintel offset is greater than the other examples. This creates depth and allows the shutter to close without binding with the edge of the structure. The projected installation example is the easiest for measuring because there is no trim or structure to dictate the measurements.

- **Recessed** - The exterior shutters are going to function so that in the closed position the shutters are going to be between the trim around the windows. Thus the measurements must be made from inside trim to inside trim for width and height. It is important to recognize the depth created by the trim as the depth of the shutter might be greater than that of the trim. If this problem exists, then combining pintel and hinge offsets can create more depth as in the projected example.

- **Flush** - The exterior shutters are going to function so that in the closed position the outside edge of the shutters is flush with the surface of the structure. Thus the measurement must be made between the inside edges of the opening of the structure for width and height. It is important to recognize the depth of the opening as the depth of the shutter might be greater than that of the opening. If this problem exists, then combining pintel and hinge offsets can create more depth as in the projected example.



Once the installation method has been determined, the width and height of the installation area is known. Traditionally, the method for determining shutter width is as follows:

Exterior Shutter Width = Opening Width - clearances (if any) / (# of windows * 2)

If the shutters are going to function, it is important to allow for hinges and spacing between shutters by Subtracting clearances from opening width before calculating for exterior shutter width. Also, the exterior shutter must be the exact width or must be trimmed at the time of installation in order to function properly. For installations involving more than one window where the shutters must function, bi-folding hinges will be needed and in the open position the shutters will fold back behind each other so that only one shutter is visible.

Please Note:

This is just a guide intended to explain the principles involved in measuring for exterior shutter installations. Accuracy depends on the accuracy of measuring and properly choosing your installation method. Installations options are available that may not be listed in this guideline but if the principles of this guide are understood clearly, then creativity will allow installers to expand on these principles to deliver a wide range of opportunities. Just remember, take several measurements of each opening since they are not always square and be safe.



1. Pick shutters to fit the window opening, and put them next to each window on top of saw horses to make sure the shutters are paired properly. Lay two shutters face down next to each other, and prepare to install hinges.



2. Install hinges after determining the offset. Hinges are to be set at the top and bottom; even with the outside edge. Drill holes with a 1/8th pilot bit. Be careful not to drill all the way through the shutter.



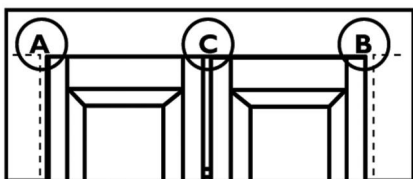
3. Position and install the upper holdback clips 1" from top and center edge of stile. Shutters over 58" require 2 sets of acorns; install similarly at top.



4. Install slide bolt. Turn shutters over and line-up the slide bolt edge with the shutter edge (see diagram above). Pre-drill 1/8 slot hole (careful not to drill all the way through). Install the slide bolt with screws. The shutters are now ready for installation.



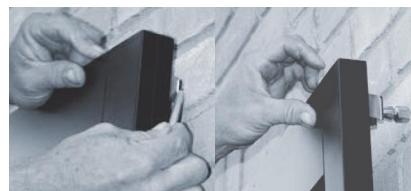
5. Position the shutters in the opening, allowing equal amounts of space between the shutters and wall (A & B), and in between the shutters (C) to allow for smooth operation (see diagram below).



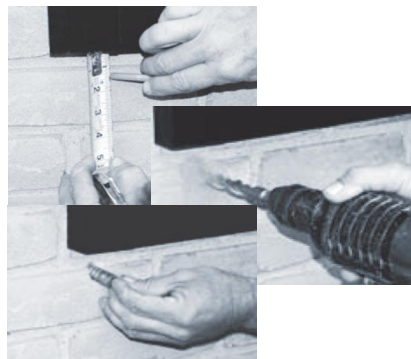
When attaching the pintel to the structure, you may have to drill into the mortar and brick – use appropriate mollys in mortar and brick.



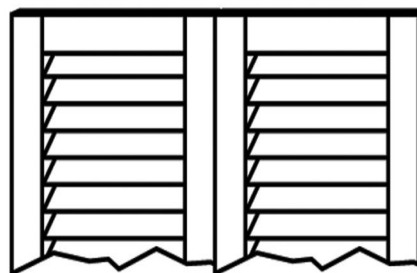
6. Install the acorn clips. Swing the shutter open, mark the center of the holdback clip, and install the acorn into brick.



7. Install the "S" Holdback*. The shutters are now held open by the acorn anchor. Position the shutter dog in the correct location and mark for screws. Fasten to the wall – 1 1/2" down from the shutter and 1 3/4" from the outside edge.



* The acorn clip is better suited for holding the shutters in place, and as such, the "S" Holdback is recommended more for a decorative use as opposed to a functional one.



Shutters in closed position

Note: To deflect rain away from the structure, louvered shutters should be installed so the louvers face AWAY from the structure when shutters are closed (see diagram above)

Please note: The above instructions are general guidelines. Installation requirements may vary.

THE SHUTTER HOUSE

EXTERIOR SHUTTERS

| INTERIOR SHUTTERS

| SHUTTER HARDWARE



STYLE

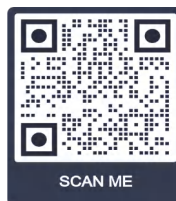
True Louver
Raised Panel
V-Groove Panel
Flat Panel
Board & Batten
Other Styles

MATERIAL

Wood Composite
Fiberglass Composite
PVC Composite
Aluminum
Western Red Cedar
Mahogany
Cypress
Southern Yellow Pine
Vinyl

HARDWARE

Cast Aluminum
Forged Steel
Cast Iron
Stainless Steel



WWW.THESHUTTERHOUSE.COM

(800) 617-3577