

# GREEN FOOD SOLUTIONS



Comprehensive vertical and urban farming technology



## **EMPOWER A NEW LOCAL FOOD SYSTEM™**

Grow anywhere, from warehouses to skyscrapers to rooftops, urban farming is not a trend. It is the future of farming.

# About Us

Green Food Solutions® is a vertical farm training company that sells, installs, and maintains vertical farms and gardens. We provide comprehensive vertical farming technology and Controlled Environment Agriculture solutions. We offer the FREE planning and design of indoor, rooftop, hydroponic urban farms and gardens, and run our Farm Amenity® service for your multi-family residential, commercial, mixed-use property, or corporate office using hydroponic growing equipment.

We help our clients grow food in any unused space; including rooftops, basements, or vacant land, and include business strategies that show our clients how to cover the cost of our service. We also work with commercial growers to provide our Agricultural Operations and Systems Maintenance Training.

We believe farming should be a sustainable business, as well as sustainable for the environment. Uniquely adaptable to most urban environments, our comprehensive growing systems are designed and engineered to produce maximum yield with a minimum environmental impact.

At Green Food Solutions®, we're not just embracing the future of farming. We're helping to shape it. Because we're on a mission to: Empower a New Local Food System™!

What truly sets Green Food Solution's systems and approach apart from other technologies is its remarkably trouble-free operation. That's because we are focused not only on providing the best growing solutions, but also on making the entire process as simple and low-maintenance as possible. The result is, quite simply, the best and most forward-thinking comprehensive solutions in the business. Here's just a handful of the high and low tech components that you can choose from with your Green Food Solutions® growing systems or Farm Amenity® package.

## CONTENTS

<b>Introduction</b>	Page 2
<b>Growing Systems</b>	Page 4
<b>Harvest Wall</b>	Page 5
<b>Tower Farms</b>	Page 7
<b>Automated Irrigation</b>	Page 11
<b>Stack Systems</b>	Page 12
<b>NFTs</b>	Page 13
<b>Dutch Buckets</b>	Page 14
<b>LED Lights</b>	Page 15
<b>Produce and Advantages</b>	Page 17
<b>Contact</b>	Page 19



*We are out to empower a new local food system. We envision cities filled with farms providing freshly harvested, nutrient dense food. Addressing our health and sustainability of the planet is what's next.*

# GROWING SYSTEMS



HARVEST WALL



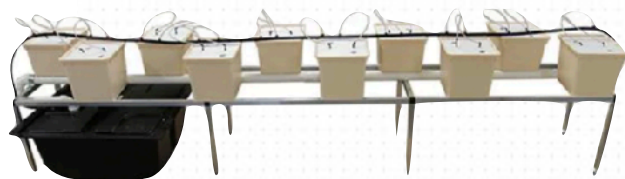
RACK SYSTEMS



NFT CHANNELS



TOWER SYSTEMS



DUTCH BUCKETS

# HARVEST TODAY WALL

Our Harvest Wall is an indoor vertical grow wall that comes in both single sided or double sided panels. It's scalable features allow you to transform any existing space into an indoor farm! With over 105 sizes available, the Harvest Wall caters to different needs and applications. Each Harvest Wall is built by interlocking tiles vertically and horizontally. With 6 grow ports on each tile, the biggest Harvest Wall (yet) grows up to 720 plants in only 16 sq ft. of space!



# HARVEST TODAY WALL PRICING

Single Sided Panels	Price	Double Sided Panels	Price
Single Panel - One Tile High - 18 Ports	\$2,292.64	Single Panel - One Tile High - 36 PORTS	\$3,115.36
Single Panel - Two Tile High - 36 PORTS	\$2,423.28	Single Panel - Two Tile High - 72 PORTS	\$3,327.95
Single Panel - Five Tile High - 90 PORTS	\$2,553.83	Single Panel - Three Tile High - 108 PORTS	\$3,540.49
Single Panel - Three Tile High - 54 PORTS	\$2,724.06	Single Panel - Four Tile High - 144 PORTS	\$3,801.20
Single Panel - Four Tile High - 72 PORTS	\$2,856.66	Single Panel - Five Tile High - 180 PORTS	\$4,016.22
Double Panel - One Tile High -36 PORTS	\$2,666.58	Double Panel - One Tile High - 72 PORTS	\$3,828.18
Double Panel - Two Tile High - 72 PORTS	\$2,865.74	Double Panel - Two Tile High -144 PORTS	\$4,194.69
Double Panel - Three Tile High - 108 PORTS	\$3,064.82	Double Panel - Three Tile High - 216 PORTS	\$4,561.15
Double Panel - Four Tile High - 144 PORTS	\$3,303.58	Double Panel - Four Tile High - 288 PORTS	\$4,975.79
Double Panel - Five Tile High - 180 PORTS	\$3,504.73	Double Panel - Five Tile High - 360 PORTS	\$5,344.73
Three Panel - One Tile High - 54 PORTS	\$3,068.82	Three Panel - One Tile High - 108 PORTS	\$4,615.03
Three Panel - Two Tile High - 108 PORTS	\$3,336.43	Three Panel - Two Tile High - 216 PORTS	\$5,135.46
Three Panel - Three Tile High - 162 PORTS	\$3,603.99	Three Panel - Three Tile High - 324 PORTS	\$5,655.85
Three Panel - Four Tile High - 216 PORTS	\$3,911.19	Three Panel - Four Tile High -432 PORTS	\$6,224.41
Three Panel - Five Tile High - 270 PORTS	\$4,180.75	Three Panel - Five Tile High - 540 PORTS	\$6,747.28
Four Panel - One Tile High - 72 PORTS	\$3,687.07	Four Panel - One Tile High - 144 PORTS	\$5,249.76
Four Panel - Two Tile High - 144 PORTS	\$4,023.11	Four Panel - Two Tile High - 288PORTS	\$5,924.11
Four Panel - Three Tile High - 216 PORTS	\$4,359.12	Four Panel - Three Tile High - 432 PORTS	\$6,598.42
Four Panel - Four Tile High - 288 PORTS	\$4,734.76	Four Panel - Four Tile High - 576 PORTS	\$7,320.91
Four Panel - Five Tile High - 360 PORTS	\$5,072.97	Four Panel - Five Tile High - 720 PORTS	\$7,997.70

# TOWER FARM

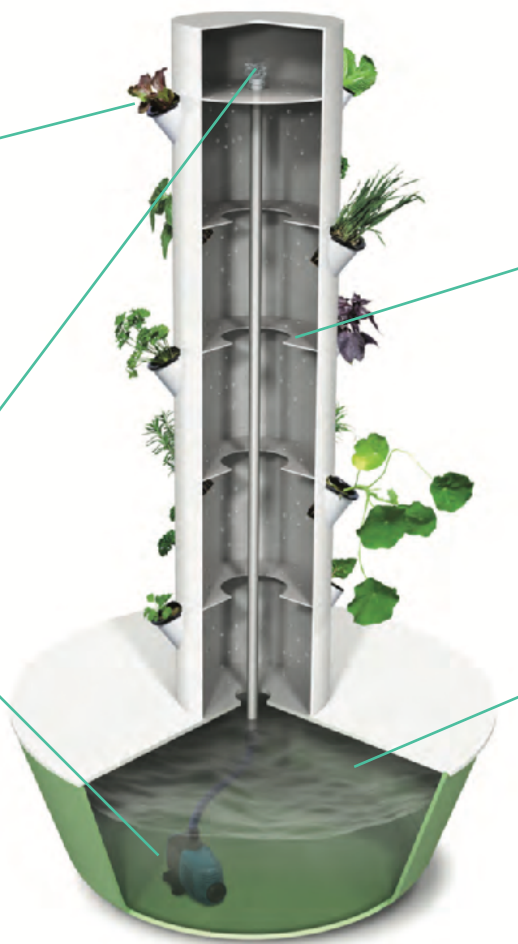
A Tower Farm is a modular aeroponic food-growing system that can be used on any leveled surface with access to water and electricity. An advanced form of hydroponics, aeroponics is a method of growing plants without soil, using only water and nutrients. Plants are suspended in air and fed with liquid nutrients only when needed. This innovative method results in faster growth, healthier plants, and bigger yields, while using dramatically less water and fewer resources. The water is recycled and fully automated. A 65-gallon gravity tank provides consistent nutrient-enriched water, making management of the farm a work of physics, not manual labor. A quick disconnect allows for easy maintenance. This scalable, modular design easily adjusts to the growth of your farm



Seedlings are suspended in the tower in a soilless medium



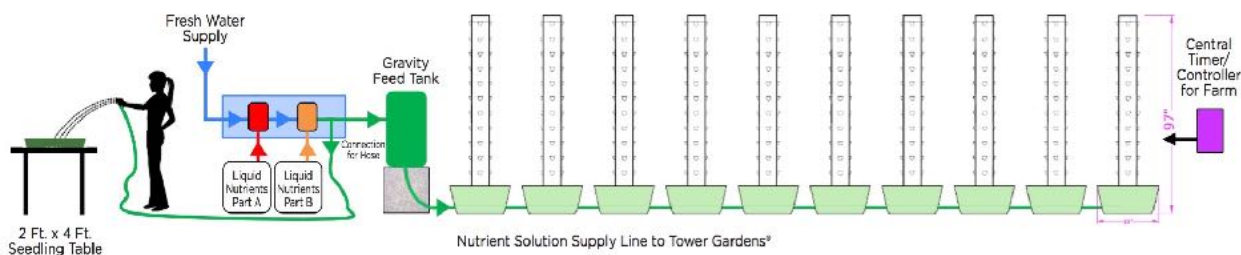
A timer-controlled, low-wattage, submersible pump propels nutrient solution to the top of the tower.



Nutrient solution cascades down the inside of the tower, oxygenating and feeding exposed plant roots.



Growing plants are fed from a 20-gallon reservoir of nutrient solution consisting of water and earth minerals, which is automatically refilled with fresh water and nutrients from a gravity feed system.



# WHAT IS INCLUDED IN YOUR TOWER FARM GROWING SYSTEM

TIMER SYSTEM



NUTRIENT DOSING SYSTEM



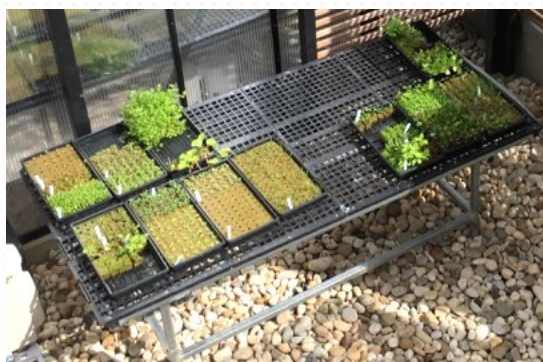
AUTO-FEED GRAVITY SYSTEM



STARTER SEEDLING & SPACER TRAYS



COMMERCIAL GRADE PROPAGATION BENCH



## Electricity Requirements for Tower Farms:

- Each Tower Farm utilizes a 68 watt pump
- 0.3 kWh per tower per day
- 60 Hertz per tower



## FARM PRICING

Proposals with exact pricing, including tax and shipping costs, are available upon request. We can explore how many Towers you may need depending on the goals of your project and available square footage. Send us a layout or dimensions of where you would like to place your farm/garden. Below is the price per Tower based on the quantity. These prices do not include all the necessary irrigation and farm equipment needed to run a Tower Farm. An accurate quote, including all farm equipment, can be generated once a design and a specified quantity of Towers is established.

Towers	5 Pots	7 Pots	9 Pots	11 Pots	13 Pots
1-49 Towers	\$515.00	\$525.00	\$560.00	\$600.00	\$635.00
50-99 Towers	\$494.40	\$504.00	\$537.60	\$576.00	\$609.60
100-299 Towers	\$478.95	\$488.25	\$520.80	\$558.00	\$590.55
300-999 Towers	\$463.50	\$472.50	\$504.00	\$540.00	\$571.50
1,000 or More	\$437.75	\$446.25	\$476.00	\$510.00	\$539.75

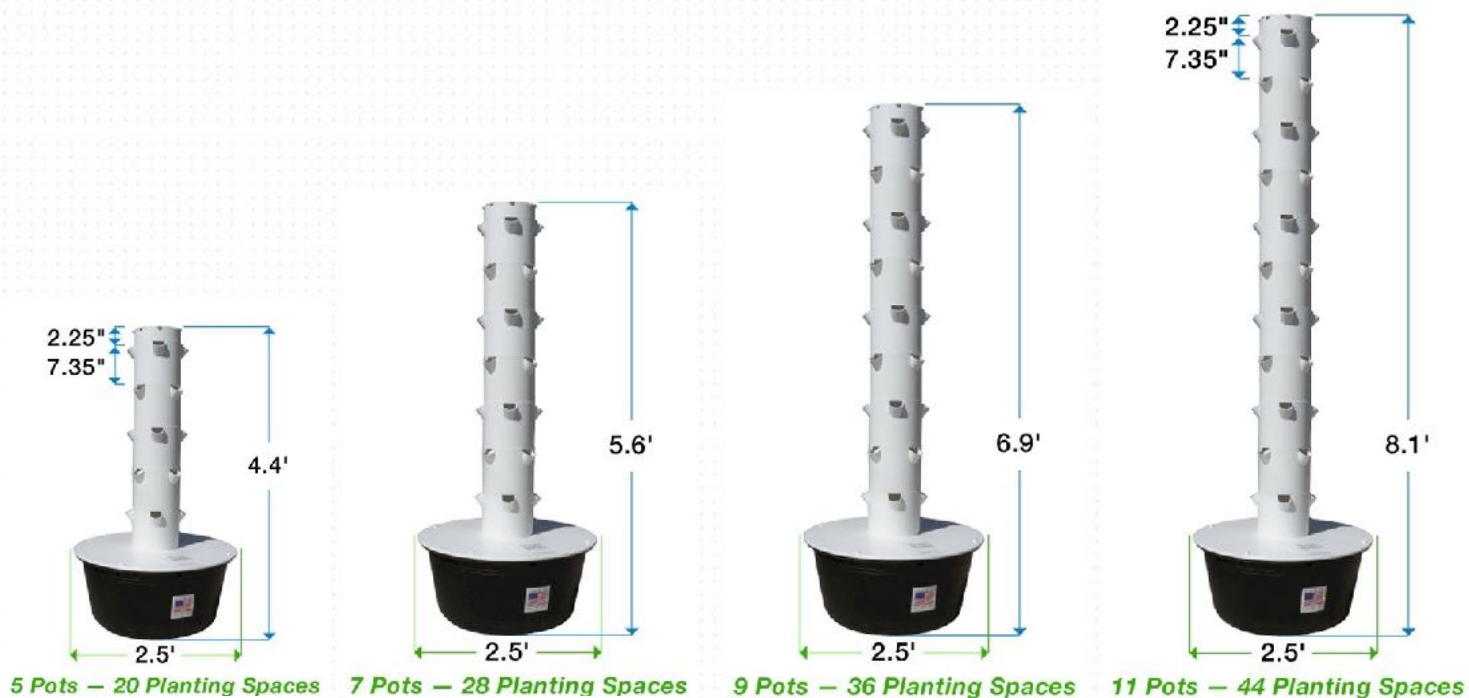
## INSTALLATION SERVICE

Green Food Solutions® will install all agricultural growing and irrigation systems. Towers are unpacked and assembled, stack systems are set up for seedling germination, irrigation is installed, and all pump connections are made. We set up your farm to start growing that day.

Installation Price per Tower	Installation Price per Stack System
\$150.00	\$250.00

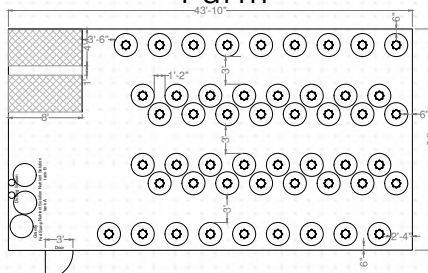
*Additional cost for long distance travel cost.*

# SCALE YOUR FARM TO ANY SIZE



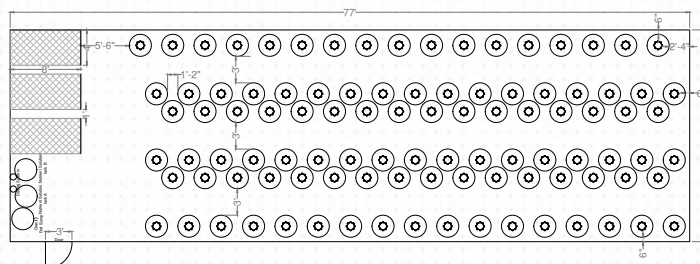
Tower Farm systems are modular horizontally and vertically. Grow anywhere from 20 plants to 44 plants per tower. Give us the dimensions of your space, we tell you how many towers you can fit and how tall they can go. The Tower Garden design allows for visibility of all plants regardless of how tall you build your Towers. If you are planning on building a farm with 300 towers or more, single reservoir systems are available. Custom designs are available upon request.

Sample 50 Tower Farm  
24' x 77' Greenhouse or Indoor  
Farm



50 Towers 11 Pots Tall = 2,200 growing

Sample 100 Tower Farm  
24' x 77' Greenhouse or Indoor  
Farm



100 Towers 11 Pots Tall = 4,400 growing

# AUTOMATED IRRIGATION

We revolutionize your farming experience with advanced Automation and Control Systems. Our solutions empower you to effortlessly cultivate any crop by providing automatic management of nutrient and pH levels. With remote monitoring, data visualization, and comprehensive training, you can manage your farm from anywhere. Our systems offer seamless control over climate, reservoir refills, and irrigation, ensuring optimal conditions. Whether you seek a sophisticated nutrient dosing systems or simply require automatic pH/EC control, we tailor our solutions to meet your specific needs. Join us in the future of farming, where precision meets simplicity, with Green Food Solutions. Customized to the size of your farm, pricing upon request.



# STACK SYSTEMS

Our stack systems are flood and drain, vertical hydroponic growing systems that recirculate, pump, and flood water to each tray on a scheduled cycle. Each stack system comes with a 38-40 gallon reservoir, grow trays, pump, and plumbing system to feed nutrient rich water to plant roots. Flood and drain systems are great for growing seedlings, but can also be used to grow full sized leafy greens, herbs, and fruiting crops. Our commercial stack system has 3 tiers, holding 5 10x20 trays per tier, is 6 feet tall, 5 feet wide, and 2 feet deep. It is made of stainless steel for durability. We also offer an economical stack system that has 4 tiers that can hold up 4 10x20 on each tier, is 6.5 feet tall, 4.3 feet wide, and 2.4 feet deep, it utilizes plastic trays on a chrome frame.



Commercial System	Economical System
\$3987.00	\$2750.00

# NFTS

Green Food Solutions offers a comprehensive selection of turn-key commercial NFT growing system packages, designed to meet diverse needs in terms of space, plant positions, and budget. Utilizing premium materials such as food-grade UV-stabilized plastic, our packages include everything from the structure, covering, and growing system to testing equipment and growing supplies. Our user-friendly NFT channels feature a removable lid for easy cleaning and harvesting. With both solid and spouted end caps. Equipped with an anti-drip drainage design, our channels are completely enclosed, preventing light exposure to the nutrient solution and effectively reducing algae growth.



4.5" Wide Channels	4 Foot	8 Foot	10 Foot	12 foot
1-199 Channels	\$7.90	\$15.75	\$19.60	\$23.55
200-499 Channels	\$7.50	\$14.95	\$18.60	\$22.35
500-999 Channels	\$7.10	\$14.15	\$17.60	\$21.20
1000 or More	\$6.70	\$13.35	\$16.65	\$20.00

# DUTCH BUCKETS

Dutch Buckets are the perfect soil-less option for growing larger crops with a longer growing cycle. You can grow virtually any vining plant, including tomatoes, cucumbers, beans, peppers, eggplants, and cannabis. Plants are drip fed a nutrient solution and the bucket holds an inch of nutrient water for plant root uptake. Water is returned to a central reservoir where the nutrient solution is recirculated back to the buckets. Plants can stay in Dutch Buckets for up to a year!

Each square bucket measures 12"x10"x9". An entire Dutch Bucket System includes: Buckets, PVC return pipe, submersible pump, rubber irrigation feed line, drip valves, drip tubes, drip stakes, aluminum stand, feed and drain plumbing, perlite growing media, reservoir with lid, digital timer, adjustable leveling feet (create slope for drainage)

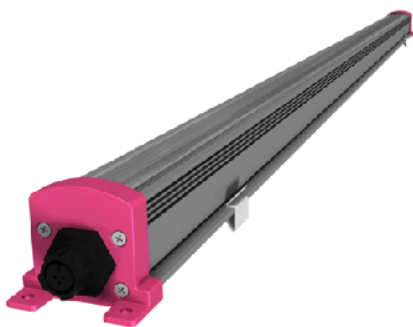
Starting Cost Per Dutch Bucket	10 Dutch Bucket System	24 Dutch Bucket System
\$6.25	\$695.00	\$1495.00



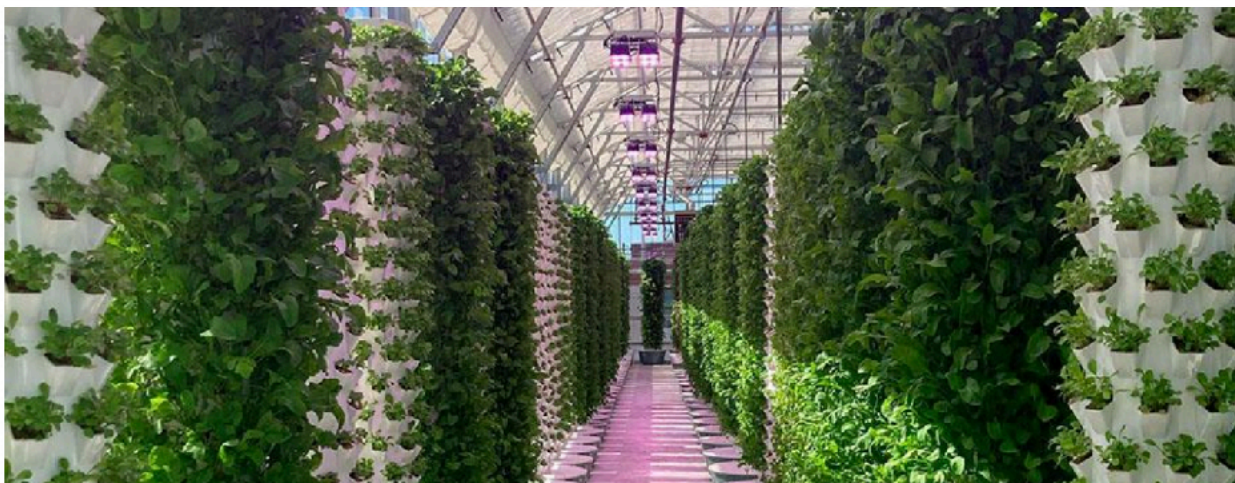
# LED GROW LIGHTS

When growing indoors or in greenhouses, LED grow lights are the preferred choice of Green Food Solutions®. We offer a variety of LED grow light solutions depending on your space, your growing system, and what you want to grow. Below are the lights that our company provides, their pricing and applied use. All LED Grow lights come with an installation and instruction manual.

- Waterproof fixtures specifically designed to throw LED rays around your tower systems in order to reach all crops equally.
- Gives higher uniformity with fewer hot and cold spots.
- Adjustable hangers allow for deeper penetrations with closer installations
- Greenhouse Supplemental Lighting | Indoor Top Light
- Wattage: 310 W
- Price: \$974



- The SGL-SLIM can be mounted below rack shelving or integrated into AgTech systems. Available in two standard spectra and nine standard beam patterns. Custom spectra can also be manufactured.
- Wattage: 310 W
- Price: See tiered pricing chart below
- Price: \$124

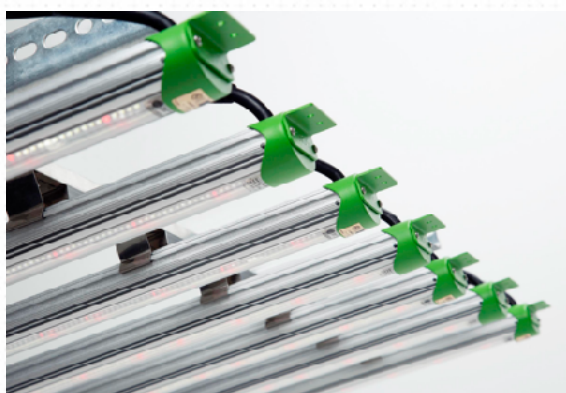


- Easy to Install, lightweight vertical Grow Lights:
- Indoor Top Light
- Wattage: 89W, 100W or 150W
- PPF: 260, 290 or 400  $\mu\text{mol/s}$
- PPE: 2.9 or 2.75  $\mu\text{mol/s}$
- Ingress Protection Rating: IP66
- Price: \$410



- Unique heat pipe thermal design allows for passive cooling, eliminating fans, moving parts, and noise.
- Greenhouse Supplemental Lighting | Indoor Top Light
- Wattage: 715W or 800W
- PPF: 2,150 or 2,400  $\mu\text{mol/s}$
- PPE: 3.0  $\mu\text{mol/J}$
- Ingress Protection Rating: IP66
- Ask for pricing

- Unique heat pipe thermal design allows for passive cooling, eliminating fans, moving parts, and noise.
- Greenhouse Supplemental Lighting | Indoor Top Light
- Wattage: 608 to 685W
- PPF: 1,550 or 1,700  $\mu\text{mol/s}$
- PPE: 2.6 or 2.5  $\mu\text{mol/J}$
- Ingress Protection Rating: IP66
- Price: \$1,380



- Durable, light-weight, vertical, indoor grow lights.
- The multiple bars can be daisy chained and easily moved according to desired light bar spacing.
- Indoor Top Light
- Wattage: 654W
- PPF: 1,641  $\mu\text{mol/s}$
- PPE 2.51  $\mu\text{mol/s}$
- Ingress Protection Rating: IP66
- Price: \$1,160



## WHAT YOU CAN GROW:

### FRUITS & VEGETABLES

- , Arugula
- , Beans
- , Broccoli
- , Cabbage
- , Cauliflower
- , Chard
- , Collards
- , Cucumbers
- , Eggplant

- , Escarole
- , Gourds
- , Kale
- , Leeks
- , Lettuce
- , Okra
- , Peas
- , Peppers
- , Spinach
- , Squash
- , Tomatoes

### HERBS

- , Basil
- , Chamomile
- , Chives
- , Cilantro
- , Cumin
- , Dandelion
- , Dill
- , Lavender Leaf
- , Fennel
- , Lemon Balm
- , Lemongrass
- , Mint
- , Oregano
- , Parsley
- , Rosemary
- , Sage
- , Stevia
- , Thyme

## ADVANTAGES YOU'LL ENJOY AS A GREEN FOOD SOLUTIONS® TRAINED FARMER OR FARM AMENITY® CLIENT

- AUTOMATED WATERING CYCLES
- ELIMINATION OF WEEDING AND DIGGING
- MINIMIZED PEST RISK
- PROFESSIONAL SUPPORT NETWORK
- INCREASED YIELD: HARVEST FULL PLANTS EVERY 3-4 WEEKS
- FASTER GROWING TIME
- MINIMAL FOOTPRINT: USES LESS LAND
- GROW UP TO 10X MORE FOOD THAN A CONVENTIONAL FARM OF THE SAME SIZE.
- CLEANER, SAFER, BETTER: NO SOIL MEANS A CLEANER GROWING ENVIRONMENT AND REDUCED EXPOSURE TO E.COLI AND OTHER CONTAGIONS ASSOCIATED WITH FIELD CROPS



30% MORE YIELD



3X FASTER GROWTH



90% LESS WATER



UP TO 90% LESS SPACE



## **EMPOWER A NEW LOCAL FOOD SYSTEM™**

In a diverse and expanding market, it pays to have options. Whether you're an entrepreneur, chef, educator, or civic leader, you'll discover there's virtually no limit to our growing solution's unrivaled flexibility and scalability. We've helped configure and integrate successful operations at schools, restaurants, residential buildings, hotels, urban centers, grocery stores, convention centers, rooftop farms, corporate offices, and greenhouse commercial farms. Lettuce help you!

G R E E N   F O O D   S O L U T I O N S ®

[greenfoodsolutions.com](http://greenfoodsolutions.com)

[info@greenfoodsolutions.com](mailto:info@greenfoodsolutions.com)

Instagram: @greenfoodsolutions

347-460-7304

