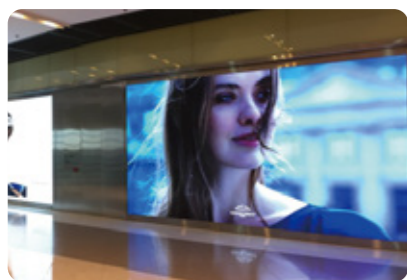


## Specification

Model	BIM Plus-X1.5	BIM Plus-X1.9	BIM Plus-X2.6	BIM Plus-X3.1	BIM Plus-X3.9	BIM Plus-X5.2
Pixel Pitch (mm)	1.5	1.9	2.6	3.1	3.9	5.2
Pixel Density (pixel/m <sup>2</sup> )	409600	262144	147456	102400	65536	36864
LED Type	SMD					
Panel Size W×H×D (mm)	1000*500*42 / 750*500*42					
Panel Resolution W×H	640*320/480*320	512*256/384*256	384*192/288*192	320*160/240*160	256*128/192*128	192*96/144*96
Panel Material	Die-cast Aluminum					
Weight (Kg/pc)	11.4/8.5					
Voltage	AC110~220V					
Brightness (nits)	600	800	800/3000	1000/3000	1000	1000
Brightness Adjustment	Programmable/Automatic/Manual					
Viewing Angle (H/V)	160°/120°					
Gray Scale (bit)	14~16					
Refresh Rate (Hz)	3840	3840	3840	1920/3840	1920/3840	1920/3840
Frame Rate (Hz)	50/60					
Contrast Ratio	8000 : 1					
Color Temperature (K)	2000-10000 (Adjustable)					
Average Power Consumption (W/m <sup>2</sup> )	138	120	120	145	145	145
Maximum Power Consumption (W/m <sup>2</sup> )	550	475	475	580	580	580
Serviceability	Front					
IP Rating	IP30					
Lifespan (Hours)	100000					

\*Above parameters are for reference only. For more details, please contact our sales team. All rights reserved to LianTronics.

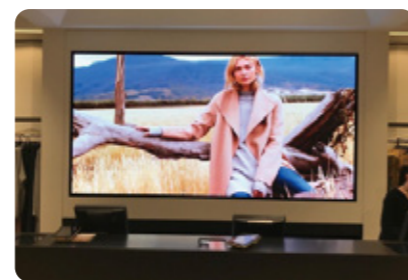
## Application Reference



Shopping Mall



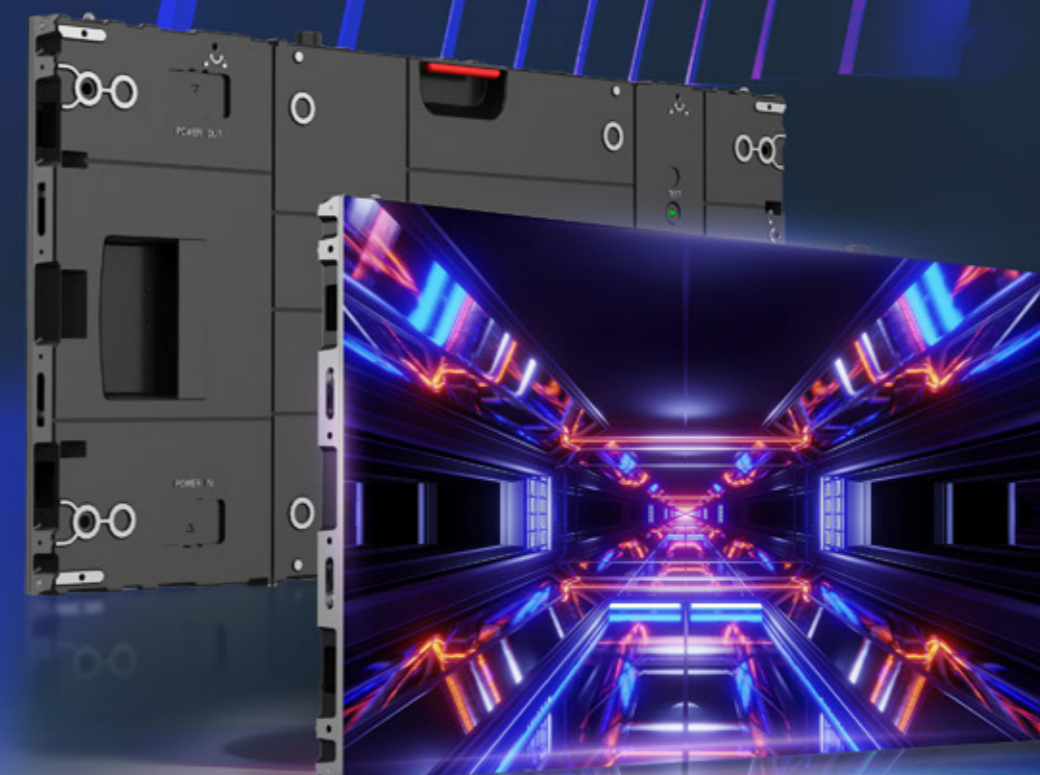
Showroom



Retail Store

# BIM Plus-X Series

X-Generation Indoor Commercial LED Display



Ultra-Thin & Light



90° Rotation



Creative Splicing



Fast Interlock



Mixed Splicing



Easy Maintenance

## LIANTRONICS CO.,LTD.

LianTronics Bldg., Antongda Industrial Zone, 3rd Liuxian Rd, 68 Block Baoan, Shenzhen, China

Email: [service@liantronics.com](mailto:service@liantronics.com) Website: [www.liantronics.com](http://www.liantronics.com)



Website

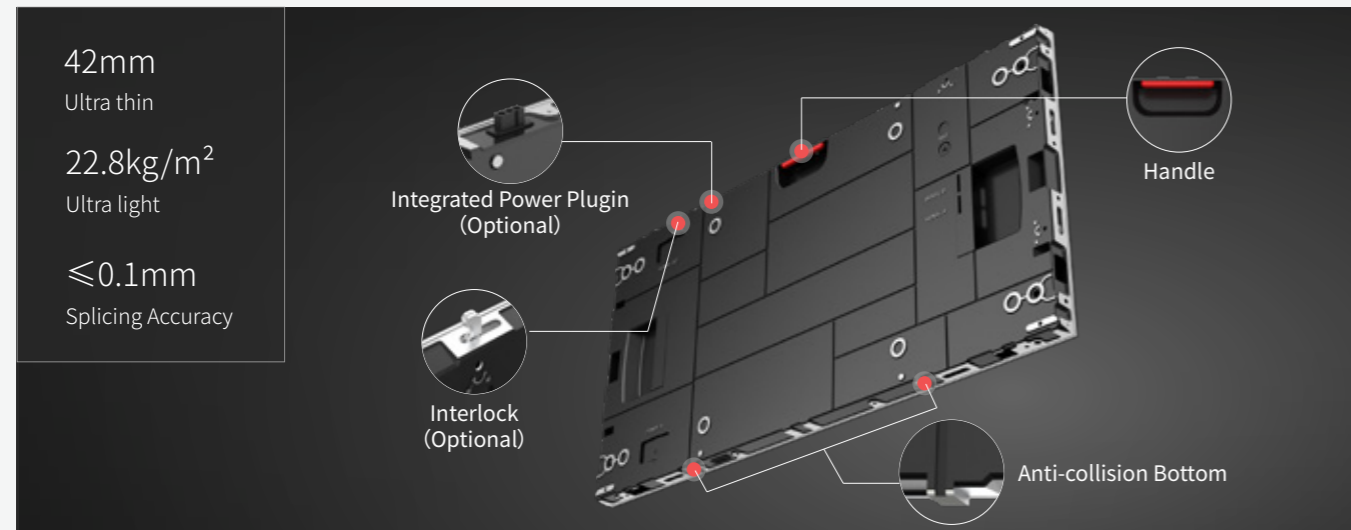


Facebook



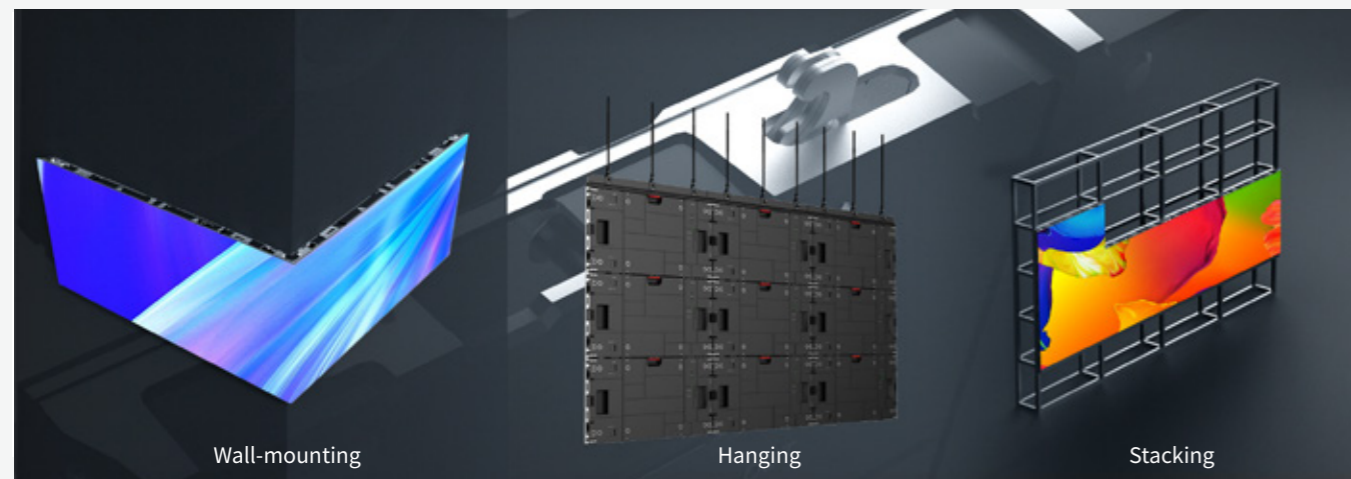
## Considerate Details

Upgraded one-piece molding die-cast BIM Plus-X cabinet features more ergonomic product details to elevate customer experience.



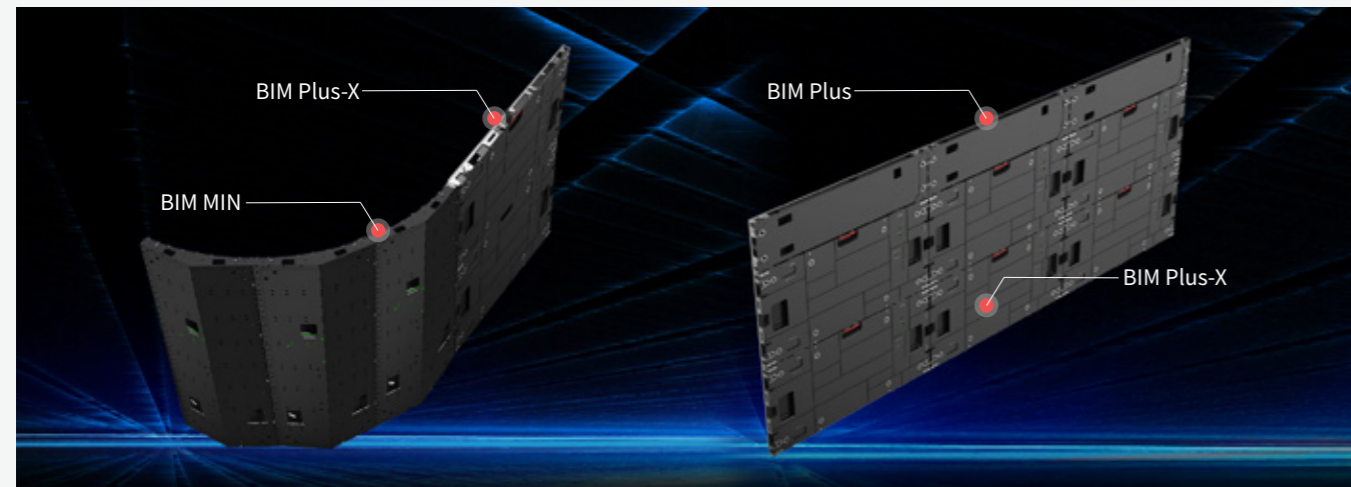
## Various Installation in High Efficiency

Thinner & lighter high-precision cabinets feature interlocks to facilitate fast installation like direct wall mounting, hanging & stacking.



## Mixed Splicing, High Practicality

BIM Plus-X Series supports up-and-down mixed splicing of BIM Plus Series, sharing common modules; and left-and-right mixed splicing with BIM MIN Series, offering higher flexibility.



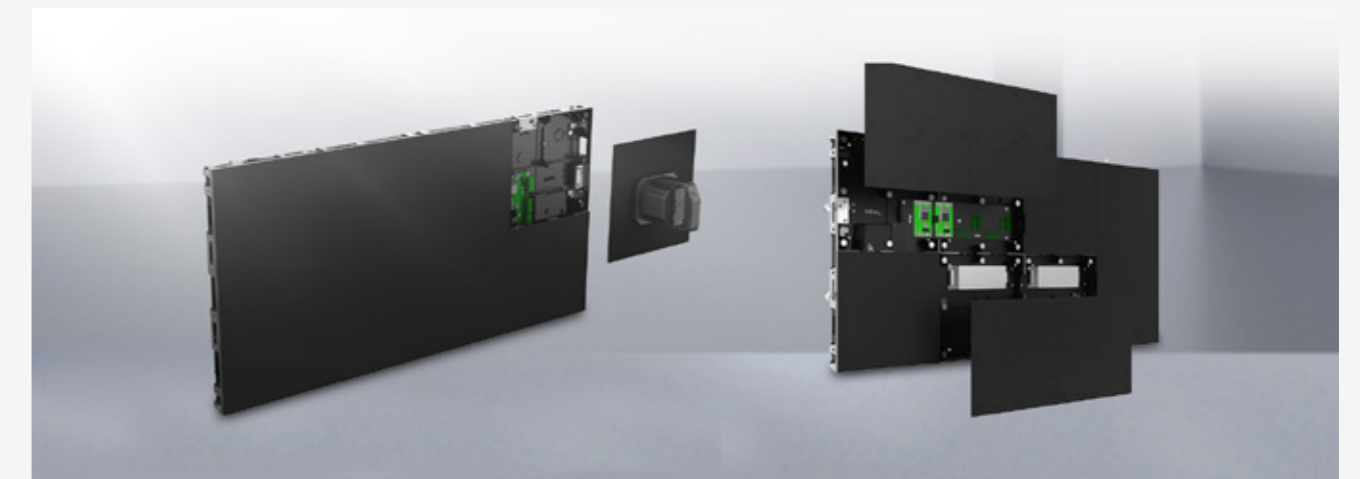
## Creative Splicing, Beyond Imagination

BIM Plus-X allows 90° rotation without color cast and multiple creative seamless splicing including L shape, cube, concave & convex, etc.



## Friendly Front Maintenance

Power supply, hub card and modules can all be maintained from the front to save your space.



## Advanced Technologies, Outstanding Performance

Patented smart inkjet craftsmanship allows vibrant and sharp presentation in higher contrast ratio; Unique nano coating provides higher protection against blind lamps, LED caterpillars, etc.

