



Absen Optoelectronic Co.,Ltd

18-20F Building 3A, Cloud Park, Bantian,
Longgang District Shenzhen, 518129, P.R.China
T: +86-755-89747399 E: absen@absen.com
F: +86-755-89747599 W: www.absen.com

Absen Inc.

7120 Lake Ellenor Drive, Orlando,
Florida 32809, USA
T: +1-407-203-8870 E: info@usabsen.com
F: +1-407-203-8873 W: www.usabsen.com

Absen GmbH

Hessenring 4c, 64546 Moerfelden-Walldorf (Frankfurt am Main),
Germany
T: +49 (0) 6105 718941-0 E: europe@absen.com
F: +49 (0) 6105 718941-29 W: www.absen-europe.com



Absen

Make the World Shine More

CONTENT

1 Company Profile

- 01 Absen Group
- 03 Development History
- 05 Brand Proposition
- 07 Brand strategy and results
- 09 Honorary Certificate
- 11 Globalization Pattern

2 Core Competencies

- 14 Entrepreneurship
- 15 Strategic Management
- 17 Product Management
- 19 Global Reach
- 21 Supply Chain Management
- 23 Trusted Culture & Organization
- 24 Listed Company
- 25 Digital Absen

3 Business Section

- 27 Display Manufacturing Industry

4 Classic Cases

- 39 DOOH
- 43 Rental&Staging
- 47 Commercial Display
- 51 Data Visualization
- 55 iCon

Established in 2001, Absen (SZSE: 300389) is the world's leading LED display products and service supplier. Absen's products are exported to more than 140 countries and regions in America, Europe, Australia, Asia, Africa, etc., and have been used in the Presidential press conference, CIIE, FIFA World Cups, NBA games and Times Square.

Delivering more than 50,000 installations, Absen produces best in class products for rental & staging, commercial display, data visualization, conference display, consumer-grade displays and other areas. with the export volume of LED products being NO.1 for 12 consecutive years.

The Absen staff, or the Absenese, hold "Honesty, Gratitude and Responsibility" as core values and steadily practice. Admiring the bees' spirit of loyalty, diligence, bravery and giving, the Absenese have been united and dedicated to providing quality products and professional services for global customers all the time in pursuit of excellence. Believing that quality is lifeline of products, this company has been a stickler for quality materials, advanced technology, user-friendly details and customer's ultimate value experience.

Absen advocates green, low-carbon, energy-efficient and environment-friendly production with sustainable development as the enterprise tenet. It has been honored as "National High-tech Enterprise", "Enterprises that Keep Contract and Value Credit in Guangdong Province" and "Shenzhen Prestigious Brand", and certified by ISO 9001 quality management systems, ISO14001 environment management systems, QC080000 Hazardous Substance Process Management System, OHSAS18001 Occupational Health and Safety Assessment Series. Most of the Absen products are qualified for European and American standards like CE, RoHS, ETL and EMC.

With headquarter in Shenzhen and manufacturing base in Huizhou, now Absen has more than 2,000 staff and 14 overseas subsidiaries and offices, making its collective knowledge and expertise available to customers worldwide. The advanced automatic production machines, modernized laboratories and professional teams in management, R&D, production, sales and services enable Absen to secure stable product quality, scale expansion, standardized production and fast delivery.

Under the leadership of such a trusted brand, the Absenese have been devoting themselves to building it into a global leading brand providing LED applications and services.



Absen Intelligent Manufacturing Centre

No.3, East Hua'nán Road, Dongjiang Hi-Tech Industrial Park, Huizhou

With a floor area of 117 thousand square feet and a total investment of over 160 million dollars, the base produces up to 6.46 million square feet of displays annually.



Absen Group Headquarters

18-20F, Building 3A, Tian'an Yungu, Bantian, Shenzhen



Hansen

- After graduation, Hansen left Lanzhou, Gansu alone, and went to work in Shenzhen with only 500 Yuan in his pocket in 1996.
- In 2001, Hansen established Shenzhen Absen Industrial Co., LTD, which is the predecessor of Absen.
- In 2010, Absen completed the shareholding reform, and officially changed its name to Shenzhen Absen Optoelectronic Co.,Ltd.
- In 2014, Absen listed on A-shares market, stock code 300389.



1996-2004

Initial start-up stage

Absen was established. Business direction was clear, original accumulation was completed.



2005-2013

High-speed growth stage

Absen started the exploration of the international market, business took off and overseas branches were established one after another.



2014-2017

Exploration and development stage

Absen went public. The Huizhou intelligent manufacturing centre put into production, and global business growth accelerated.



2018-Now

Restart up stage

Rebuilt process-oriented organization based on advanced management systems, released the Absen corporate culture 4.0

Trusted LED Supplier

14

Domestic and Overseas Companies

140+

Countries and Regions

50000+

Reference Cases

2000+

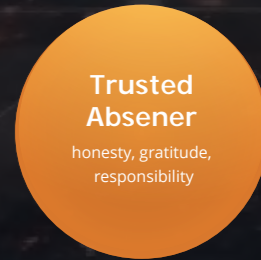
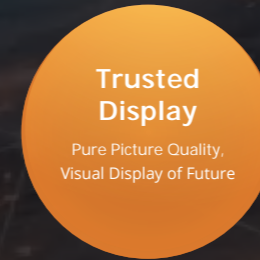
Employees

6000+

Channel Partners

16000+

Channel Engineers



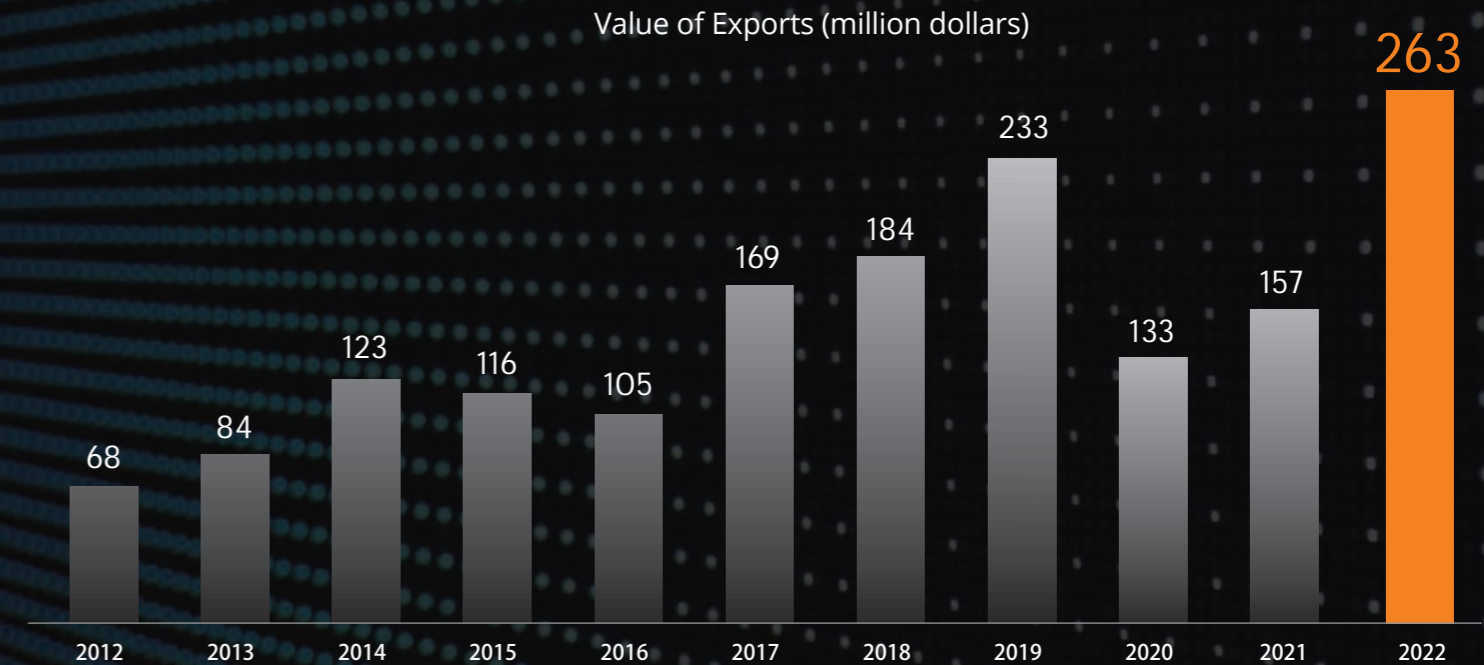
Brand Strategy Upgrading 2023

Actively promote category brands based on the continuous growth of brand influence in the display industry.



12 consecutive years No.1 by export value

Among the Chinese LED display exporters, Absen has been No. 1 for 12 consecutive years (2009-2020)



Since its foundation, Absen received recognition and support from both inside and outside the industry and all walks of life, accumulated awards, titles hundreds



Absen LED displays are also compatible with CCC, Rohs, TUV, CE, UL, FCC & other domestic and international safety standards, which are committed to providing best superior quality products for customers.



14 domestic and international subsidiaries, 6000+ channel partners.

20+ domestic office, 4500+ channel partners.



Northwestern BU
Xi 'an, Lanzhou, Yinchuan, Urumqi

Northeastern BU
Shenyang, Harbin

North China BU
Beijing, Tianjing, Taiyuan, Shijiazhuang, Jinan

East China BU
Shanghai, Nanjing, Hangzhou

Central China BU
Wuhan, Zhengzhou, Hefei, Nanchang

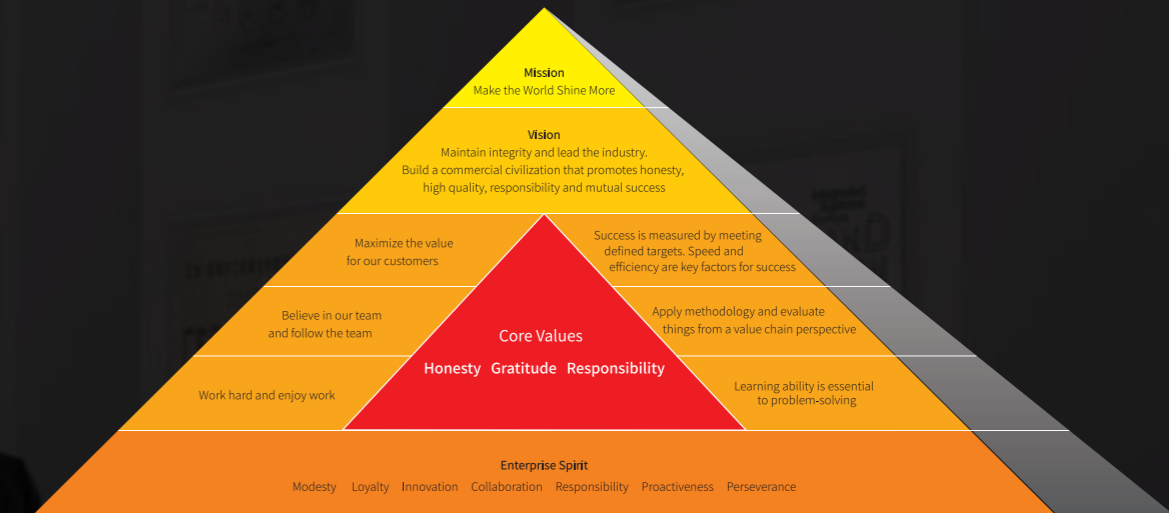
South China BU
Guangzhou, Shenzhen, Foshan, Changsha, Xiamen, Haikou

Southwestern BU
Chengdu, Chongqing, Guiyang, Kunming, Nanning, Lhasa

- ★ Regional
- Provincial
- Channel partner



Absen entrepreneurship spirits, innovation, creation and responsibility is leaded and oriented by its mission, vision and core value statements.



Mission
 Make the World Shine More
 In pursuit of excellence, we are committed to providing the best products and services for our customers worldwide.
 We are the light of the world. We want to make the world shine more and make people's life more colorful.

Vision
 Maintain integrity and lead the industry. Build a commercial civilization that promotes honesty, high quality, responsibility and mutual success.
 We run our business with sincerity and integrity, seeking to develop better to lead the industry and light up the world.
 We are determined to build a business civilization that promotes honesty, high quality, responsibility and mutual success.
 We call upon more private enterprises in China and around the world to join hands with us in building such a commercial civilization.

Core Values
 Honesty Gratitude Responsibility
Honesty: Have a pure heart, be honest and trustworthy, and stay true to our words and firm in our actions.
Gratitude: Love is the drive of life and gratitude is the source of love. We should live with love, become the love and give our love.
Responsibility: To act is to fulfill responsibility.

Values
 Maximize the value for our customers
 Believe in our team and follow the team
 Work hard and enjoy work
 Success is measured by meeting defined targets. Speed and efficiency are key factors for success.
 Apply methodology and evaluate things from a value chain perspective
 Learning ability is essential to problem-solving.

Enterprise Spirit
 Modesty
 Loyalty
 Innovation
 Collaboration
 Responsibility
 Proactiveness
 Perseverance

Based on deep understanding of Industry, our vision drives us to be streamlined and efficient inside and out while aligning vertically and horizontally to meet target guidelines. Our vision also allows us to seize opportunities and control risks to fulfill corporate mission.

DSTE Strategy management processing based on BLM Model



Phased strategic objectives:

Aggressively develop domestic and overseas market at controlled pace; Focus on branding, channel, product and organization; Effectively implement the business plan and realize a three-year goal to reach 10 billion sales.

Prospect of Enterprise Strategy

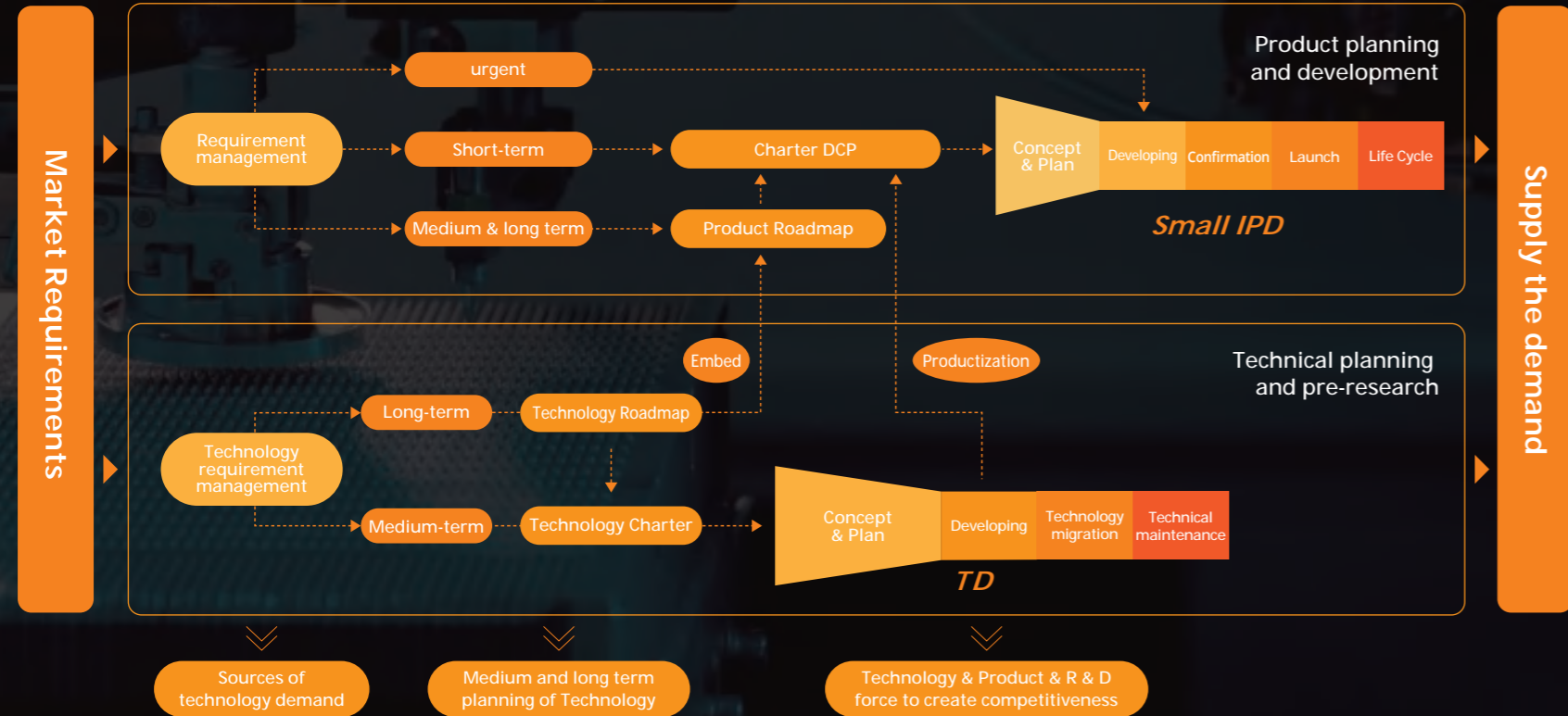


Requirement management, product / technology planning and development, commercial success verification, excellent IPD product management system can provide products with the lowest life cycle cost to customers.

Market Segment and Product Portfolio

5 product lines, 20+star product platforms, widely be used in DOOH, rental & staging, commercial display, data visualization, conference display and consumer-grade.

IPD Process Architecture for Absen Product Management



DOOH	Rental & Staging	Commercial Display	Data Visualization	iCon
A series Ultra high brightness LED display	PR series VP High-end professional VP display	A27 series 16:9 high-end NPP display	Clear Cobalt series Ultimate COB LED display	Absenicon M Series High-end 4K home theater TV
AW series Fine pixel pitch LED display	AX Pro / AX series VP MiniLED rental display	NX series 16:9 creative slim display	KLCOB Series Professional COB LED display	Absenicon X Series High-end flip-chip COB AIO screen
GS series Cost-effective LED display	PL series VP Mainstream rental display	N Plus series Creative combination display	HC Series Indoor narrow pixel pitch display	Absenicon C Standard Mainstream LED AIO screen
AS series Flexible & Convenient LED display	MR series VP Professional floor display	K Plus series Lightweight display		Absenicon C Slim Mainstream high screen-to-body LED screen
C series Mesh LED display	VN series High-end touring display	KL series Ready-to-use display		Absenicon C Ultrawide Screen Mainstream 21:9 display solution
A99 Stadium perimeter LED display	JP Pro/JP series High-end transparent display	CP series Ready-to-use display		Absenicon E Series Cost-effective LED AIO screen
JD series Transparent LED display	NT series Cost-effective rental display			

22 years in the LED display business, An international team that speaks **13 languages**, **6,000+** global service engineers, business in more than **140** countries, **50,000+** successful cases.




Global Presence, Local Service

ACE, the industry-first engineer training program; There have been **3000+** Absen Certified Engineers worldwide, **500+** service partners across **6** continents and **33** countries worldwide; provide **7x24** hours professional service.

 **9 global service centers**


 **7*24h Professional services**


 **3000+ Absen Certified Engineers worldwide**

 **500+ service partners**



 **ACE Training**

 **Warehouse & Logistics**

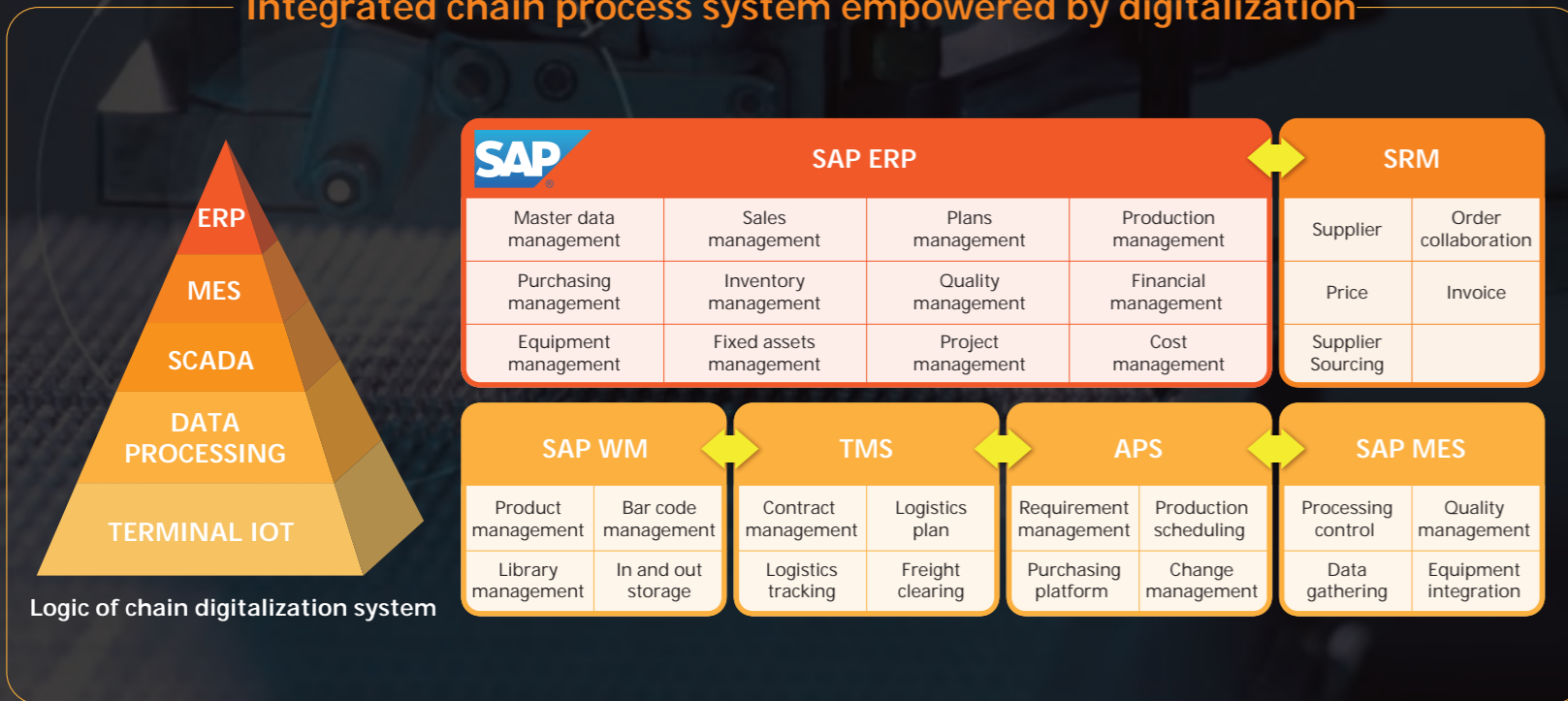
 **After-sales Service**

 **Technical Support**

 **Marketing Support**

While collaborating with internal and external resources, Absen is able to produce an efficient circulation of R&D, manage production and sales while maintaining a quality process throughout.

Integrated chain process system empowered by digitalization



Highly Effective Cooperation, Create Value for Customers



Stock Code **300389**

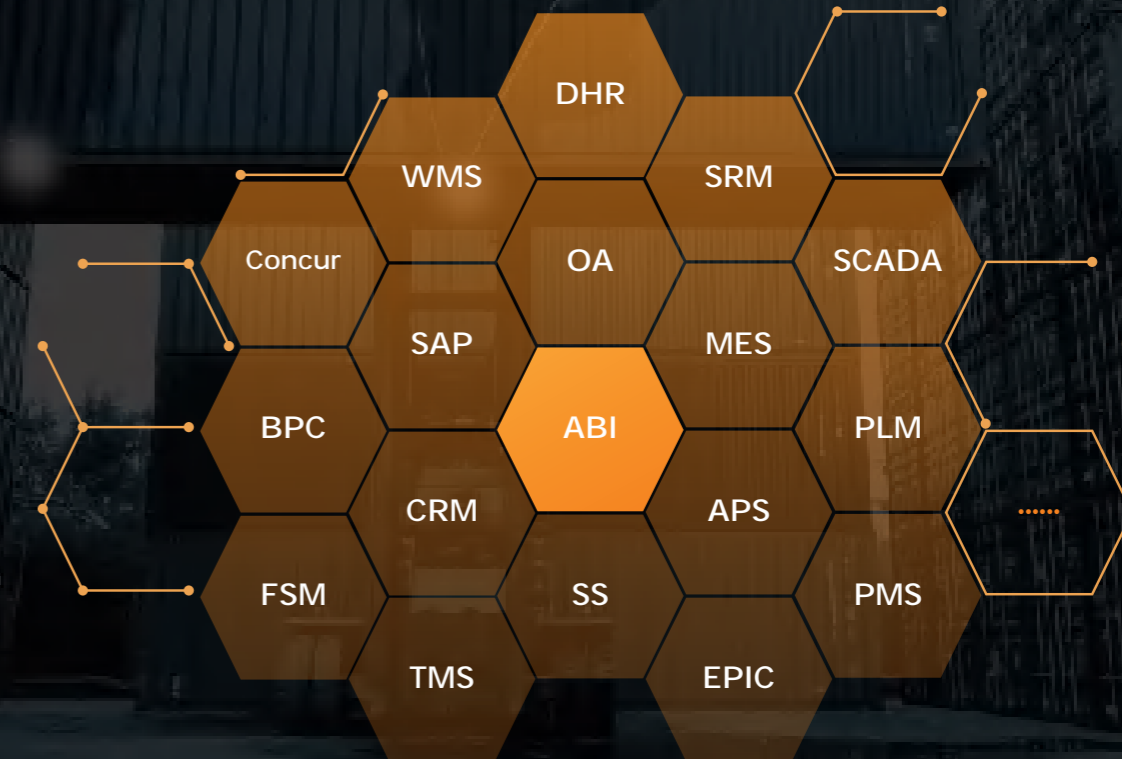
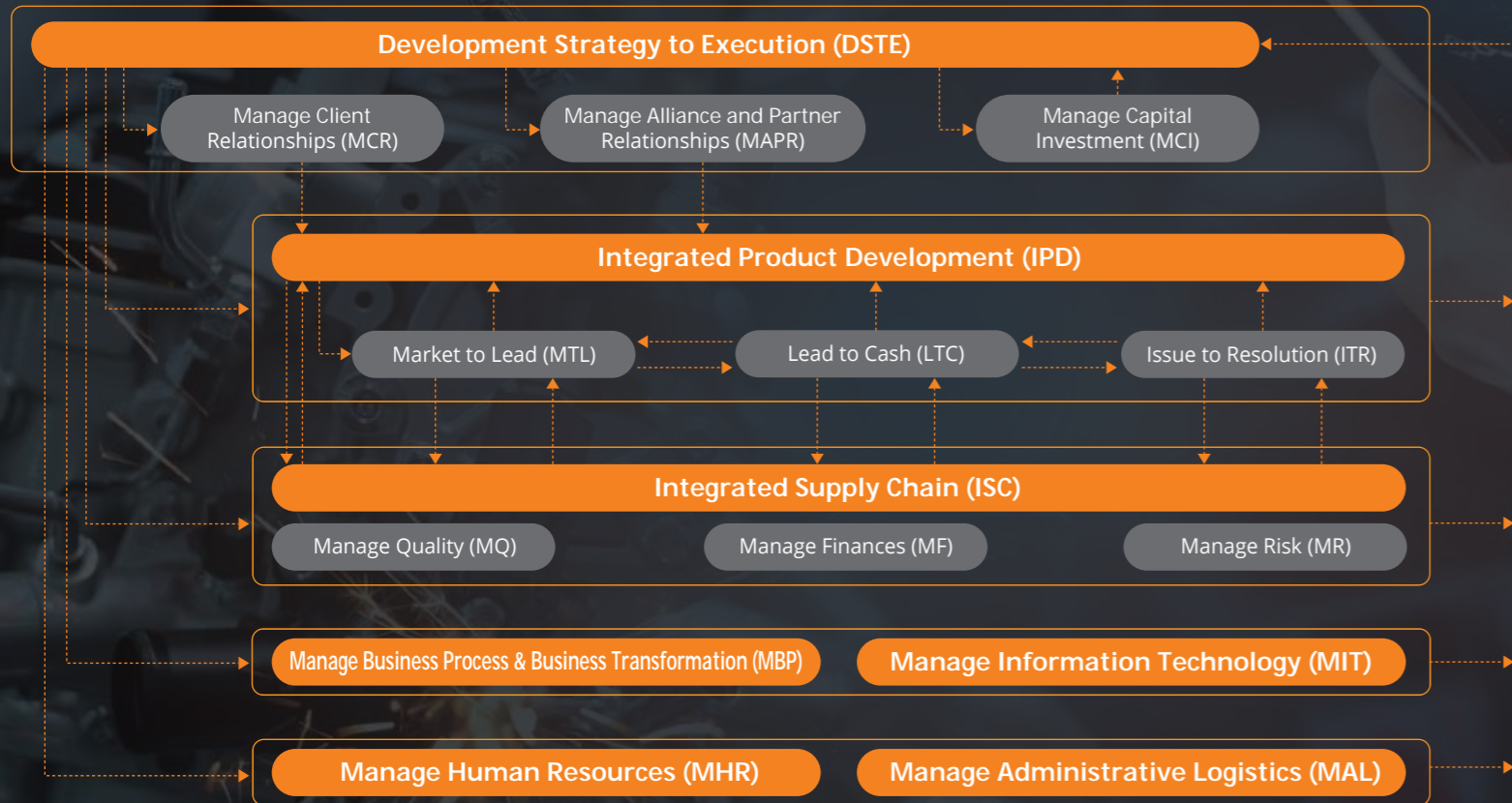
Absen is based on trusted culture, gathering and cultivating talent. With highly effective cooperation and consistent targets through process-oriented organization.

Focus on Core Business, Financial Stability



Being an agile, efficient, risk-controllable, customer-centric and process-oriented organization.
 Process structure: The end-to-end business process structure is "strategy-driven and customer-needs-oriented" (16 major processes).

Industry-leading digital management with over \$100 million investment;
 18 major information systems to create a modern enterprise management system, helping Absen to move **towards digital, mobile, and intelligent** ecosystem.



Display Manufacturing

DOOH



- Billboard
- Spectacular
- Digital Sign
- Street Furniture
- Transit Center
- Mall
- Intelligent Pole
- Sports
- Transportation

Rental & Staging



- Corporate Event
- Public Event
- Live Music
- Broadcasting - Rental
- Virtual Production Studio
- xR Stage

Commercial Display



- Corporate
- Retail
- Theme Park
- Exhibition
- Esports, Entertainment Bar, Cruise
- Hospital, Public Health
- House of Worship, Temple, Mosque

Data Visualization



- Control Room
- Conference Room
- TV Studio
- Exhibition
- Luxury Living

iCon



- Meeting Room
- Lecture Hall
- Home Theater

One-stop service

▶ Service Solution design

- ✓ Product selection
- ✓ Control system
- ✓ Construction design
- ✓ Installation plan
- ✓ Full life-cycle service design
- ✓ Operating Solutions

▶ Project delivery and guidance

- ✓ Turnkey projects
- ✓ Installation construction
- ✓ Project acceptance
- ✓ Refurbishing screens
- ✓ Screens relocation

▶ Post-sale

- ✓ 7*24h online service
- ✓ Local onsite service
- ✓ Original maintenance
- ✓ Spare parts supply
- ✓ Maintenance service

▶ Hosting service

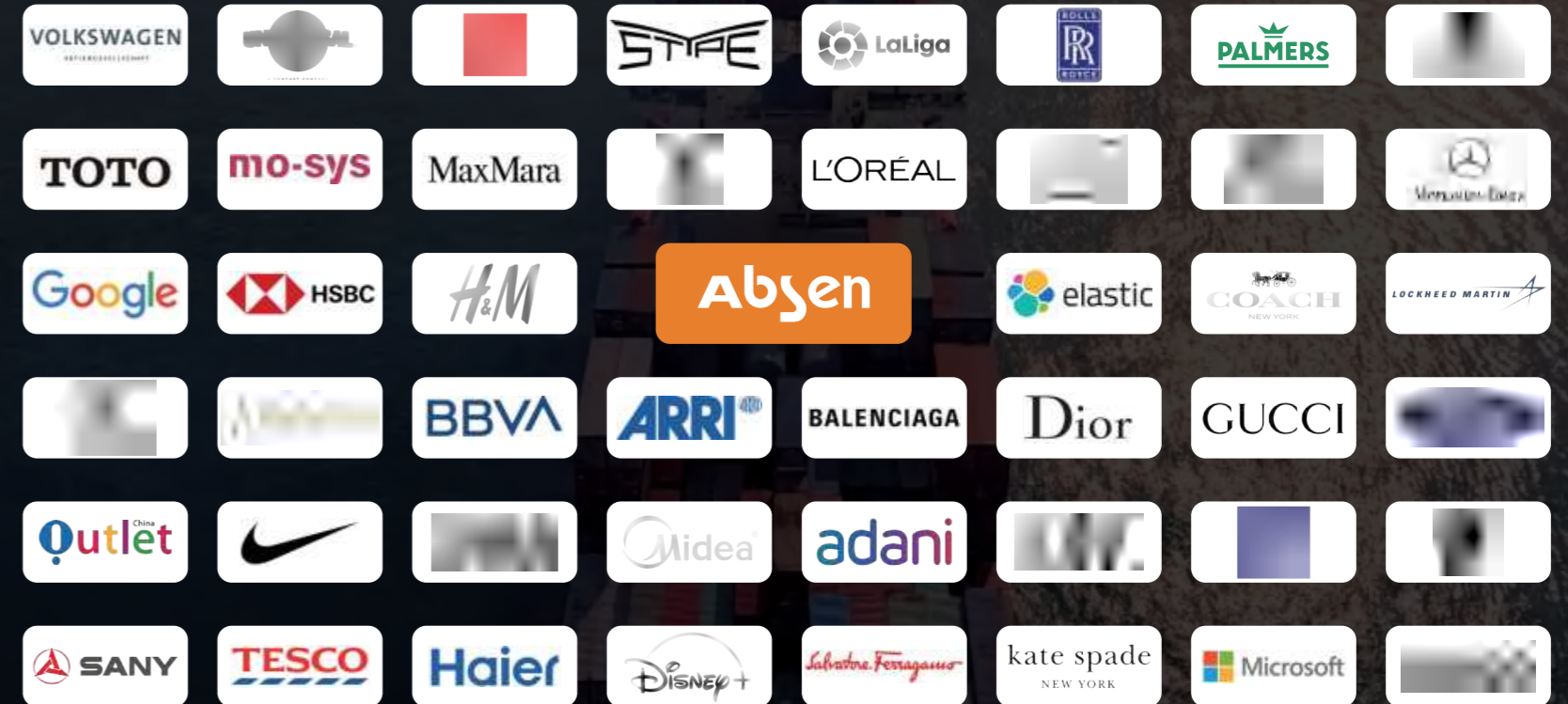
- ✓ Spare parts
- ✓ Human resources
- ✓ Operation and maintenance
- ✓ Activity Guarantee
- ✓ Bespoke services

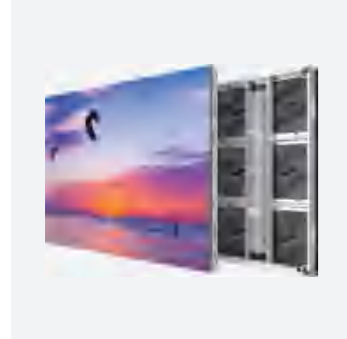
▶ Empowering certification

- ✓ ACE (Absen certificated engineer)
- ✓ ACP (Absen certificated partner)
- ✓ ACA (Absen certificated absener)
- ✓ ASQ (Absen service qualification system)

50,000+ Customers' Choices

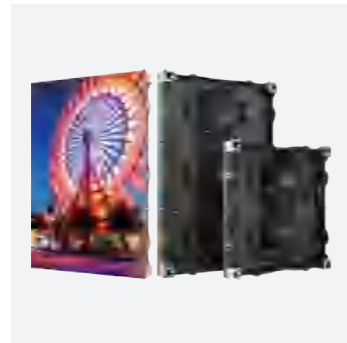
Being customer-centric and keeping working to create value for customers.





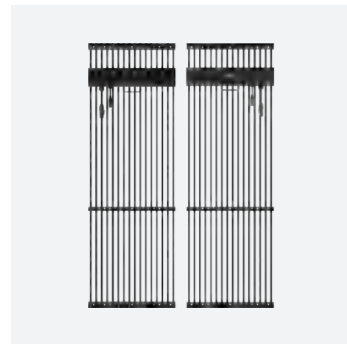
A Ultra high brightness LED display

Model	A0421	A0621	A0821	A1021	A1021D	A1621D
Pixel Pitch (mm)	4.44	6.66	8	10	10.66	16
LED Type	SMD	SMD	SMD	SMD	DIP	DIP
Brightness (nit)	7500	7500-10000	7500-10000	7500-10000	10000	10000
Panel Size (mm)	1280x960x70	1280x960x72	1280x960x72	1280x960x72	1280x960x80	1280x960x80
Pixel Per Panel (dots)	288x216	192x144	160x120	128x96	120x90	80x60
Ingress protection	IP65/IP54	IP65/IP54	IP65/IP54	IP65/IP54	IP65/IP54	IP65/IP54



AW Fine pixel pitch LED display

Model	AW2.5	AW2.8	AW3.9
Pixel Pitch (mm)	2.5	2.84	3.9
LED Type	SMD	SMD	SMD
Brightness (nit)	4500	5000	5000
Panel Size (mm)	500x500x83 / 500x750x83	500x500x83 / 500x750x83	500x500x83 / 500x750x83
Pixel Per Panel (dots)	200x200 / 200x300	176x176 / 176x264	128x128 / 128x192
Ingress protection	IP65/IP65	IP65/IP65	IP65/IP65



C Mesh LED display

Model	C15-31 Plus	C31 Plus
Pixel Pitch (mm)	15.625/31.25	31.25
LED Type	DIP	DIP
Brightness (nit)	8000	8000
Panel Size (mm)	500x1500x88	500x1500x88
Pixel Per Panel (dots)	16x96	16x48
Ingress protection	IP65/IP65	IP65/IP65



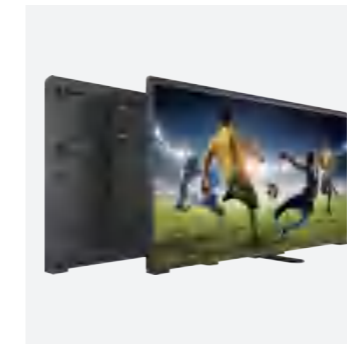
GS Cost-effective LED display

Model	GS3	GS4	GS5	GS6	GS10	GS10D	GS16D
Pixel Pitch (mm)	3.07	4	5	6.66	10	10	16
LED Type	SMD	SMD	SMD	SMD	SMD	DIP	DIP
Brightness (nit)	4500	5000	5000	5000	5500	8000	10000
Panel Size (mm)	640x960x145	640x960x145	640x960x145	640x960x145	640x960x145	1280x960x145	1280x960x145
Pixel Per Panel (dots)	208x312	320x240	256x192	192x144	128x96	128x96	80x60
Ingress protection	IP65/IP54	IP65/IP54	IP65/IP54	IP65/IP54	IP65/IP54	IP65/IP54	IP65/IP54



AS Flexible & convenient LED display

Model	AS4	AS6	AS10
Pixel Pitch (mm)	4	6.66	10
LED Type	SMD	SMD	SMD
Brightness (nit)	6000	6000	6500
Panel Size (mm)	1280x960x145	1280x960x145	1280x960x145
Pixel Per Panel (dots)	320x240	192x144	128x96
Ingress protection	IP65/IP54	IP65/IP54	IP65/IP54



A99 Stadium perimeter LED display

Model	A99-6	A99-10
Pixel Pitch (mm)	6.25	10
LED Type	SMD	SMD
Brightness (nit)	6000	6000
Panel Size (mm)	1600x900x118	
Pixel Per Panel (dots)	256x144	160x90
Ingress protection	IP65/IP65	IP65/IP65



JD Transparent LED display

Model	JD3.9-T	JD10-T
Pixel Pitch (H/V)(mm)	3.9/7.8	10.42/10.42
LED Type	SMD	SMD
Brightness (nit)	5000	5000
Panel Size (mm)	1000x500x96	
Pixel Per Panel (dots)	256x64	96x48
Ingress protection	IP30	IP30



Rental & Staging



PR High-end professional VP display

Model	PR1.5		PR1.9		PR2.5		PR3.9		PR5.2	
Control System	Brompton	NovaStar	Brompton	NovaStar	Brompton	NovaStar	Brompton	NovaStar	Brompton	NovaStar
Pixel Pitch (mm)	1.5	1.5	1.9	1.9	2.5	2.5	3.9	3.9	5.2	5.2
LED Type	IMD	IMD	Black SMD1212		Black SMD1515		SMD1921		SMD1921	
Brightness (nit)	1500	1500	1500	1500	1500	1500	6000	6000	6000	6000
Panel Dimensions (mm)	500x500x93				500x500x93/ 500x1000x93					
Panel Resolution	320x320	320x320	256x256	256x256	200x200/ 200x400		128x128/ 128x256		96x96/ 96x192	
IP Rating (Front/ Rear)	IP40/ IP21					IP65/ IP54				
Curving Capabilities	0° to +7.5° concave (in units of 2.5°; only for 500x500x93mm panels)									



AX Pro/ AX Mini LED rental display

Model	AX1.2 Pro		AX1.5 Pro		AX1.2		AX1.5		AX1.9	
Control System	Brompton	NovaStar	Brompton	NovaStar	NovaStar	Brompton	NovaStar	Brompton	NovaStar	
Pixel Pitch (mm)	1.27	1.27	1.58	1.58	1.27	1.58	1.58	1.90	1.90	
LED Type	IMD	IMD	IMD	IMD	IMD	IMD	IMD	IMD	IMD	
Brightness (nit)	1500	1500	1000	1000	600	800	800	1200	1200	
Panel Dimensions (mm)	610x343x80				610x343x66.5					
Panel Resolution	480x270	480x270	384x216	384x216	480x270	384x216	384x216	320x180	320x180	
IP Rating (Front/ Rear)	IP40/ IP21									
Curving Capabilities	0°, 2.5° concave									



PL V10 Mainstream indoor & outdoor rental solution

Model	PL1.9 Pro V10		PL2.5 Pro V10		PL2.9 V10	PL3.9 V10	PL3.9 Pro V10	PL4.8 Pro V10	PL2.5 Pro V10-Cube	PL2.9 Pro V10-Cube
Control System	Brompton	NovaStar	Brompton	NovaStar	NovaStar					
Pixel Pitch (mm)	1.953	1.953	2.5	2.5	2.97	3.9	3.9	4.8	2.5	2.97
LED Type	IMD	IMD	Black SMD1515		Black SMD2121		Black SMD1921		Black SMD1515	Black SMD2121
Brightness (nit)	1200	1200	1500	1500	1000	1000	4500	4500	1500	1000
Panel Dimensions (mm)	500x500x88				500x500x88/ 500x1000x88				500x500x88	
Panel Resolution	256x256	256x256	200x200	200x200	168x168 168x336	128x128 128x256	128x128 128x256	104x104 104x208	200x200	168x168
IP Rating (Front/ Rear)	IP40/ IP21					IP65/ IP54			IP40/ IP21	
Curving Capabilities	-7.5° convex to +10° concave (in units of 2.5°)									



PL V2 Mainstream indoor & outdoor rental solution

Model	PL2.5 XR V2	PL2.5 Pro V2	PL3.9 Pro V2	PL4.8 Pro V2	PL1.9 Plus V2	PL2.5 Plus V2	PL2.9 Plus V2	PL3.9 Plus V2	PL2.9W Plus V2	PL3.9W Plus V2	PL4.8W Plus V2
Control System	Brompton	Brompton/ NovaStar	NovaStar								
Pixel Pitch (mm)	2.5	2.5	3.9	4.8	1.95	2.5	2.97	3.9	2.97	3.9	4.8
LED Type	Black SMD1515		Black SMD1921		Black SMD1212	Black SMD1515		SMD2121	SMD1515	SMD1921	
Brightness (nit)	1500	1500	4500	4000	1000	1200	1000	1000	4000	4500	4500
Panel Dimensions (mm)	500x500x78	500x500x78	500x500x78 500x1000x78		500x500x78	500x500x78	500x500x78 500x1000x78		500x500x78 500x1000x78	500x500x78 500x1000x78	
Panel Resolution	200x200	200x200	128x128 128x256	104x104 104x208	256x256	200x200	168x168 168x336	128x128 128x256	168x168 168x336	128x128 128x256	104x104 104x208
IP Rating (Front/ Rear)	IP40/ IP21		IP65/ IP54		IP40/ IP21				IP65/ IP54		
Curving Capabilities	-7.5° convex to +10° concave (in units of 2.5°)										



PL Lite V10 Mainstream indoor & outdoor rental solution

Model	PL2.5 Lite V10	PL2.9 Lite V10	PL3.9 Lite V10	PL3.9W Lite V10	PL4.8W Lite V10	PL2.5 Lite V10-Cube	PL2.9 Lite V10-Cube	PL3.9 Lite V10-Cube	PL3.9W Lite V10-Cube
Control System	NovaStar								
Pixel Pitch (mm)	2.5	2.97	3.9	3.9	4.8	2.5	2.97	3.9	3.9
LED Type	Black SMD1515	Black SMD2121		SMD1921		Black SMD1515	Black SMD2121		SMD1921
Brightness (nit)	1000	1000	1000	4500	4500	1000	1000	1000	4500
Panel Dimensions (mm)	500x500x88		500x500x88/ 500x1000x88			500x500x88			
Panel Resolution	200x200	168x168	128x128 128x256	128x128 128x256	104x104 104x208	200x200	168x168	128x128	128x128
IP Rating (Front/ Rear)	IP40/ IP21			IP65/ IP54		IP40/ IP21			IP65/ IP54
Curving Capabilities	-7.5° convex to +10° concave (in units of 2.5°)								



NT Cost-effective rental display

Model	NT2.6		NT2.9		NT3.9W	
Control System	NovaStar					
Pixel Pitch (mm)	2.6		2.97	2.97	3.9	
LED Type	Black SMD1515		Black SMD2020		SMD1921	
Brightness (nit)	1000		1000	1000	4000	
Panel Dimensions (mm)	500x500x80		500x500x80 / 500x1000x80			
Panel Resolution	192x192		168x168 / 168x336		128x128 / 128x256	
IP Rating (Front/ Rear)	IP21/ IP20				IP65/ IP54	
Curving Capabilities	-7.5° convex to +10° concave (in units of 2.5°)					



Rental & Staging



VN High-end touring display

Model	VN3.9 Pro		VN4.8 Pro		VN8.3	
Control System	Brompton	NovaStar	Brompton	NovaStar	Brompton	NovaStar
Pixel Pitch (mm)	3.9	3.9	4.8	4.8	8.3	8.3
LED Type	Black SMD1921				SMD1921	
Brightness (nit)	4500	4500	4500	4500	5000	5000
Panel Dimensions (mm)	500x500x113 / 500x1000x113 / 1500x1000x113				500x1000x113 / 1500x1000x113	
Panel Resolution	128x128 / 128x256 / 384x256		104x104 / 104x208 / 312x208		60x120 / 180x120	
IP Rating (Front/ Rear)	IP65/IP54					
Curving Capabilities	-10° convex to +10° concave (in units of 5°; only for 500x500x113mm and 500x1000x113mm panels)					



JP Pro/JP High-end transparent display

Model	JP8 Pro		JP4.68		JP6.25	JP8.33	JP9.37
Control System	Brompton	NovaStar	Brompton	NovaStar	NovaStar		
Pixel Pitch (mm)	8.9	8.9	4.68	4.68	6.25	8.33	9.37
LED Type	SMD1515	SMD1515	SMD1921	SMD1515	SMD1515	SMD1921	SMD1515
Brightness (nit)	4000	4000	4500	3000	4500	5000	3000
Panel Dimensions (mm)	1000x1000x100	1000x1000x100	600x600x100		600x600x100 600x1200x100	500x500x100 500x1000x100	600x600x100 600x1200x100
Panel Resolution	112x112	112x112	128x128		96x96 / 96x192	60x60 / 60x120	64x64 / 64x128
IP Rating (Front/ Rear)	IP65/IP54	IP65/IP54	IP20/IP20		IP65/IP54		
Transparency	50%	50%	/		35%	20%	45%



MR Professional floor display

Model	MR2.5		MR4.8 Matte		MR4.8 Anchor-free Matte		MR4.8 Glassy	MR4.8 Interactive Matte
Control System	Brompton	NovaStar	Brompton	NovaStar	Brompton	NovaStar	NovaStar	NovaStar
Pixel Pitch (mm)	2.5	2.5	4.8	4.8	4.8	4.8	4.8	4.8
LED Type	SMD1515		SMD1921					
Brightness (nit)	1000	1000	1500	1000	1500	1500	1000	1000
Panel Dimensions (mm)	500x500x80		500x500x85				500x500x92	500x500x85
Panel Resolution	200x200	200x200	104x104	104x104	104x104	104x104	104x104	104x104
IP Rating (Front/ Rear)	IP65/IP54							
Maximum Load Capacity (kg/㎡)	1000		2500					



Data Visualization



Clear Cobalt Series Ultimate COB LED display

Model	CL0.9 V2	CL1.2 V2
Pixel Pitch (mm)	0.95	1.27
LED Type	Flip-chip RGB	
Brightness (nit)	1200	1200
Contrast Ratio	20000:1	20000:1
Panel Dimensions (WxHxD)/(mm)	610x343x49.8	610x343x49.8
Pixel Pitch (mm)	640x360	480x270



KLCOB Series Professional COB LED display

Model	KLCOB 0.9 V2	KLCOB 1.2 V2	KLCOB 1.5 V2
Pixel Pitch (mm)	0.93	1.25	1.56
LED Type	Flip-chip RGB		
Brightness (nit)	600-800	600-800	600-800
Contrast Ratio	15000:1	15000:1	15000:1
Panel Dimensions (WxHxD)/(mm)	600x337.5x39.8	600x337.5x39.8	600x337.5x39.8
Pixel Pitch (mm)	640x360	480x270	384x216



HC Series Indoor narrow pixel pitch display

Model	HC0.7 Pro II	HC0.9 Pro II	HC1.2 Pro II	HC1.2 II	HC1.5 II	HC1.8 II
Pixel pitch (mm)	0.78	0.93	1.25	1.25	1.56	1.87
LED type	IMD	IMD	IMD	SMD	SMD	SMD
Brightness (nit)	600	600	600	800	800	800
Grayscale (Bit)	15	14	14	14	14	14
Panel size (WxHxD)/(mm)	600x337.5x50	600x337.5x43	600x337.5x50	600x337.5x43	600x337.5x43	600x337.5x43
Module size (WxH)/(mm)	150x168.75		150x337.5			



Commercial Display



A27 V3 16:9 High-end NPP Display

Model	A2712 V3	A2715 V3	A2719 V3	A2725 V3
Pixel Pitch (mm)	1.27	1.58	1.9	2.54
LED Type	Black SMD1010	Black SMD1010	Black SMD1515	Black SMD2121
Brightness (nit)	800	800	1000	1000
Panel Dimensions (mm)	610x343x44.5			
Pixel Per Panel (dots)	480x270	384x216	320x180	240x135



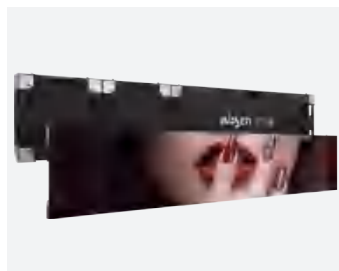
A27 Pro 16:9 High-end NPP Display

Model	A2712 Pro	A2715 Pro
Pixel Pitch (mm)	1.27	1.58
LED Type	IMD 4in1	IMD 4in1
Brightness (nit)	600	800
Panel Dimensions (mm)	610x343x49	
Pixel Per Panel (dots)	480x270	384x216



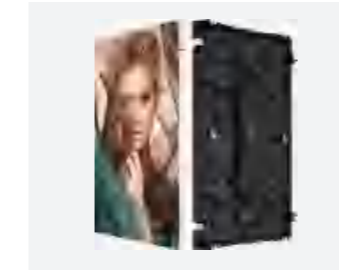
NX 16:9 creative slim display

Model	NX 1.5	NX 1.8	NX1.8-N	NX 2.5	NX 3.7
Pixel Pitch (mm)	1.5	1.87	1.87	2.5	3.75
LED Type	Black SMD1212	Black SMD1515	Black SMD1515	Black SMD1515	Black SMD1515
Brightness (nit)	800	800/ 1500	800	800/ 1500	800/ 1500
Refresh Rate (Hz)	3840	3840	7680	3840	3840
Frame rate (fps)	60	60	144	60	60
Panel Dimensions (mm)	240x540x43.5/ 960x540x43.5				
Pixel Per Panel (dots)	160x360/ 640x360	128x288/ 512x288	128x288/ 512x288	96x216/ 384x216	64x144/ 256x144



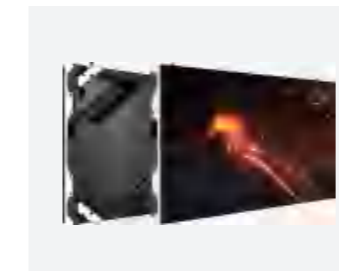
N Plus Creative combination display

Model	N1.8 Plus	N2 Plus	N3 Plus	N4 Plus	N4D Plus	N5 Plus
Pixel Pitch (mm)	1.89	2.4	3.2	4	4	5.14
LED Type	Black SMD1515	Black SMD1515	Black SMD2121	Black SMD2121	SMD1921	Black SMD2121
Brightness (nit)	800	800	800	800	2500	800
Panel Dimensions (mm)	864x288x54/ 1152x288x54		864x288x54/ 1152x288x54/ 1440x288x54			
Pixel Per Panel (dots)	456x152/ 608x152	360x120/ 480x120	270x90/ 360x90/ 450x90	216x72/ 288x72/ 360x72	216x72/ 288x72/ 360x72	168x56/ 224x56/280x56



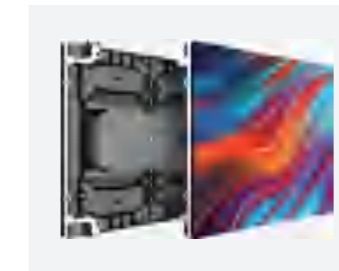
K Plus Lightweight display

Model	K1.9 Plus	K2.5 Plus	K2.9D Plus	K3 Plus	K3D Plus
Pixel Pitch (mm)	1.95	2.5	2.97	3.9	3.9
LED Type	Black SMD1515	Black SMD2121	SMD1921	Black SMD2121	SMD1921
Brightness (nit)	700	700	3000	700	3000
Panel Dimensions (mm)	500x1000x62.5/ 500x750x62.5				
Pixel Per Panel (dots)	256x512/ 256x384	200x400/ 200x300	168x336/ 168x252	128x256/ 128x192	128x256/ 128x192



KL II 16:9 Ready-to-use panel

Model	KL1.2 II	KL1.5 II	KL1.8 II	KL1.8 II
Pixel Pitch (mm)	1.25	1.53	1.86	2.5
LED Type	Black SMD1010	Black SMD1212	Black SMD1515	Black SMD1515
Brightness (nit)	800	800	800	600
Panel Dimensions (mm)	640x360x65			
Pixel Per Panel (dots)	512x288	416x234	344x192	256x144



KL Ready-to-use panel

Model	KL1.2	KL1.5	KL1.8	KL2	KL2.5	KL3
Pixel Pitch (mm)	1.25	1.53	1.83	2	2.5	3.07
LED Type	Black SMD1010	Black SMD1212	Black SMD1515	Black SMD1515	Black SMD1515	Black SMD2121
Brightness (nit)	600	700	700	700	700	700
Panel Dimensions (mm)	640x480x60					
Pixel Per Panel (dots)	512x384	416x312	348x261	320x240	256x192	208x156



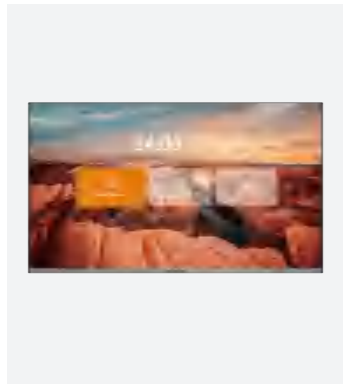
CP Ready-to-use panel

Model	CP1.2-W	CP1.5-W	CP1.8	CP2	CP2.5
Pixel Pitch (mm)	1.25	1.53	1.86	2	2.5
LED Type	Black SMD1010	Black SMD1212	Black SMD1515	Black SMD1515	Black SMD1515
Brightness (nit)	500	500	500	500	500
Panel Dimensions (mm)	640x480x61.5			320x480x55	
Pixel Per Panel (dots)	512x384	416x312	172x258	160x240	128x192



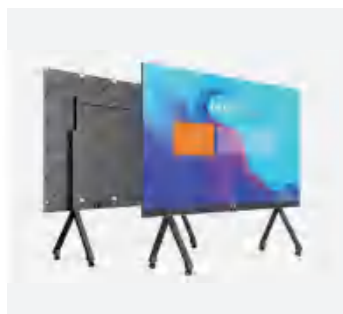
M Series High-end 4K home theater TV

Model	M138	M165	M220
LED Type	Flip-chip RGB	Flip-chip RGB	Flip-chip RGB
Diagonal Size (inches)	138"	165"	220"
Screen Dimensions (W x H)(mm)	3050×1715	3660×2058	4880×2744
Screen Resolution (dots)	3840×2160	3840×2160	3840×2160
Brightness (nit)	0-1200	0-1200	0-1200
Contrast Ratio	20000:1	20000:1	20000:1
IP Rating(Front/Rear)	IP40/IP21	IP40/IP21	IP40/IP21



X Series High-end COB all-in-one display

Model	X108	X136	X163
LED Type	Flip-chip RGB	Flip-chip RGB	Flip-chip RGB
Diagonal Size (inches)	108"	136"	163"
Screen Dimensions (W x H)(mm)	2400*1350	3000*1687.5	3600*2025
Screen Resolution (dots)	1920*1080	1920*1080	2304*1296
Brightness (nit)	600	600	600
Contrast Ratio	15000:1	15000:1	15000:1
IP Rating(Front/Rear)	IP40/IP21	IP40/IP21	IP40/IP21
System	Android 11.0, Windows 10(optional)		



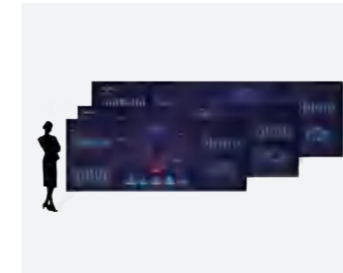
C Standard Mainstream all-in-One display

Model	C110	C138	C165
Diagonal Size (inches)	110"	138"	165"
Screen Dimensions (W x H)(mm)	2440*1372	3050*1715	3660*2058
Screen Resolution (dots)	1920x1080	1920x1080	1920x1080
Brightness (nit)	350nit	350nit	350nit
Audio	2*20w	2*20w	2*20w
System	Android 8.0, Windows 10(optional)		



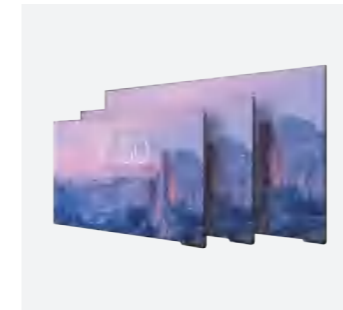
C Slim High screen-to-body ratio display

Model	C110S	C138S	C165S
Diagonal Size (inches)	110"	138"	165"
Screen Dimensions (W x H)(mm)	2440*1372	3050*1715	3660*2058
Screen Resolution (dots)	1920x1080	1920x1080	1920x1080
Brightness (nit)	600nit	600nit	600nit
System	Android 8.0, Windows 10(optional)		



C Ultrawide Applicable to 21:9 content display

Model	C154	C181	C208
Diagonal Size (inches)	154"	181"	208"
Screen Dimensions (W x H)(mm)	3660x1372	4270x1715	4880x2058
Screen Resolution (dots)	2880*1080	2688*1080	2560*1080
Brightness (nit)	600	600	600
System	Android 8.0		



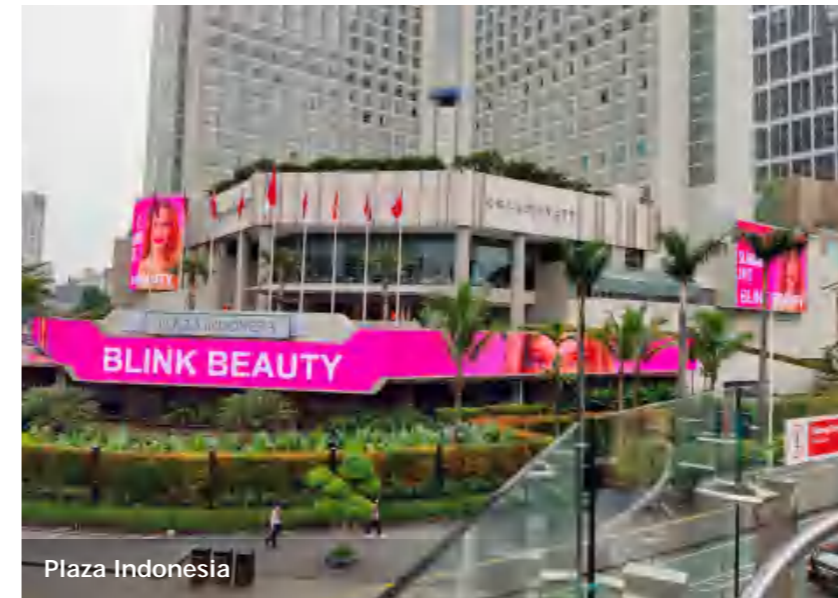
E Series Professional all-in-one display

Model	E116	E130	E158
Diagonal Size (inches)	116"	130"	158"
Screen Dimensions (W x H)(mm)	2560*1440	2880*1620	3520*1980
Screen Resolution (dots)	2048*1152	1872*1053	1892*1056
Brightness (nit)	500	500	500
System	Android 8.0, Windows 10(optional)		



The PALMERS BUILDING in Vienna, Austria

The Largest LED display in Europe, 1020sqm, which has been installed on a high-rise building by the busiest road in Austria, just south of the country's capital of Vienna. Absen, as the LED display supplier of Rineo Digital, provide 1428 cabinets for the LED display. Its solid quality makes it a perfect choice for DOOH applications, maximizing the value of commercial advertising.



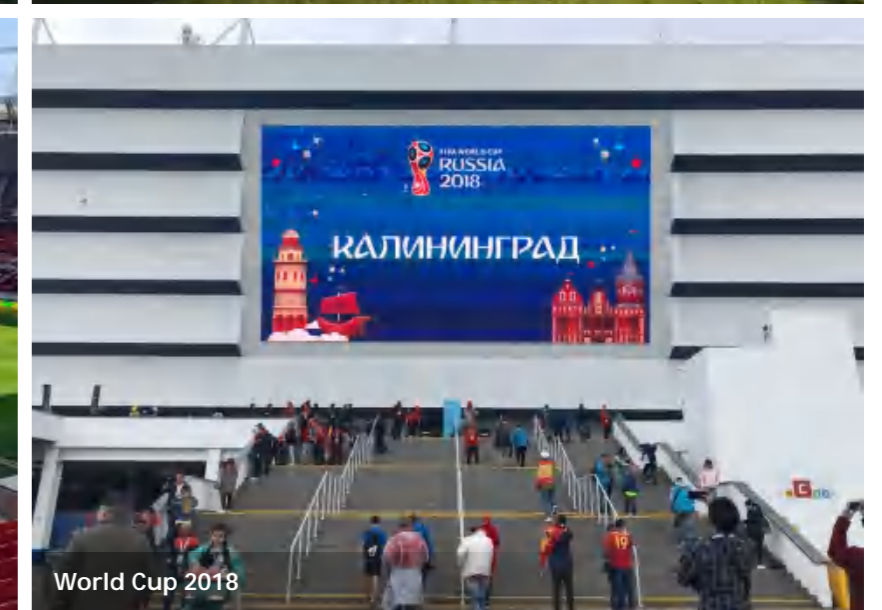
Plaza Indonesia



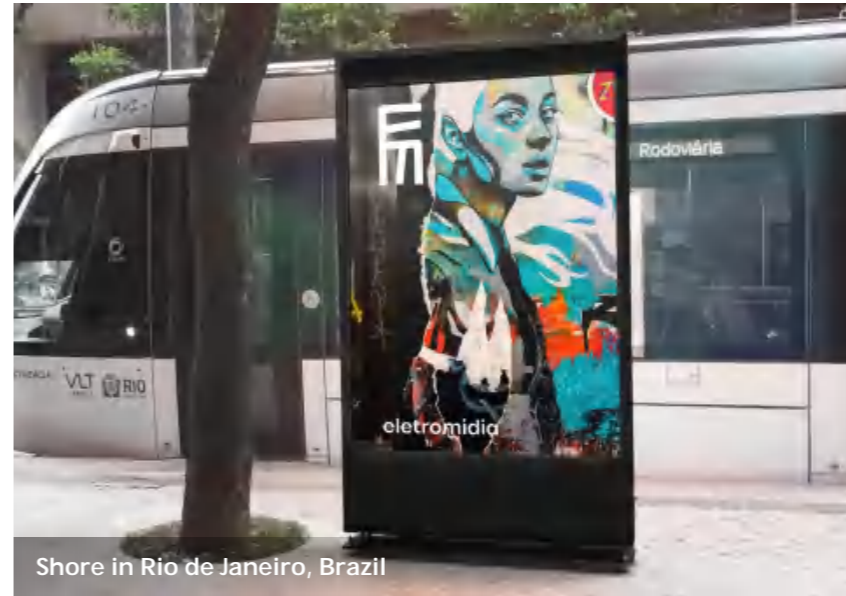
Outdoor LED Display, Morocco



World Cup Qatar 2022

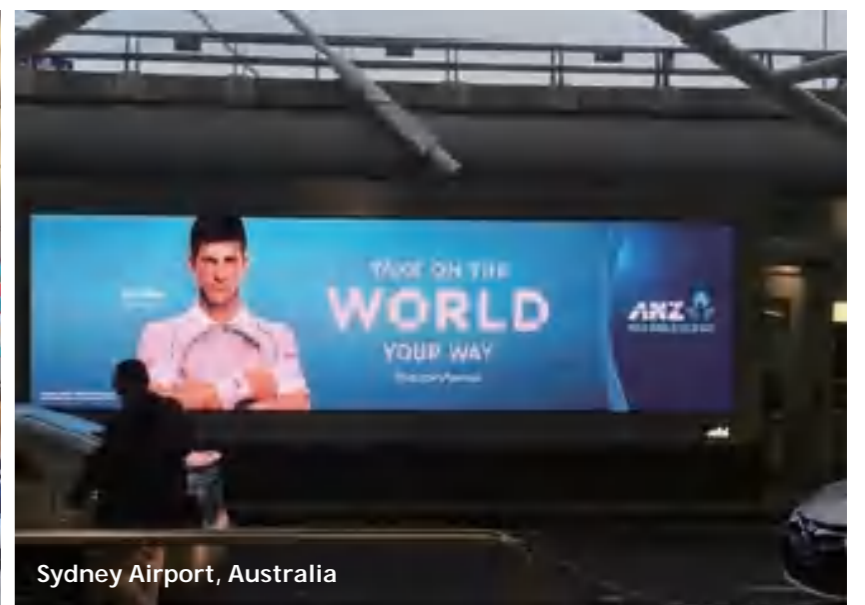


World Cup 2018



Shore in Rio de Janeiro, Brazil (260 sets)

A total of 260 light box LED displays from outdoor LED display series line the beautiful shores of Rio de Janeiro, Brazil. Together they cover an area of 568m² (2.18m²/set), and are all in use to display ads for medium and high-end brands. The high definition and true-to-life color of the displays add to the beauty of the local attractions.





Ceremony for the 2021/22 UEFA Champions League Group Stage Draw



Mayday "Fly to 2023" World Tour in Malaysia

As part of the "Fly to 2023" world tour, Mayday, China's largest rock band, held a sold-out concert at the Bukit Jalil National Stadium in Malaysia, in February 2023.

The nearly 900 m² Lyra series of transparent LED screens presented a perfect stage for this long-awaited large-scale comeback, allowing 100,000 spectators to immerse themselves in this exciting performance. As a transparent display, the LR series combined with special effects such as laser lighting and smoke makes the whole stage more dreamy and unforgettable.





Sterling's Virtual Studio, UK

Sterling Studio in Manchester aims to build an immersive filming space for video conferencing, online meeting platforms, and other virtual activities to improve the quality of program production. The studio covers an area of 230m², with an 11m long stage located in the middle on which there is a round rostrum measuring 3.6m in diameter. Behind the stage is a curved Absen PL2.5 Pro LED that measures 16m in length and 3m in width. The screen clearly presents images, videos, documents, and other content required in the process of production to create impressive displays and ensure a smooth recording process. Commenting on the value of Sterling Studio, Dan Charmer, director of Sterling Event Group, remarked, "We wanted to create a safe, hygienic space that encompassed the high production value and set design, whilst ensuring the opportunity for engagement with audiences for our clients in a more visually impactful way".



MTL Grande Studio, TransQuebec inc., USA



World Cup Final Draw, 2018



The 2019 Southeast Asian Games, the Philippines



Dota 2's The International 2022 (TI11), Singapore



Classic Cases

Commercial Display



Istanbul Airport, Turkey



Fen Court London, UK

Fen Court, a new 15-storey office and retail development in the City of London, has been equipped with a 180sqm LED screen, converting the ground floor of the building into a space that feels like an open-air environment.





OXO City, Hongqiao Transportation Hub, Shanghai, China

Located in the transportation hub of Hongqiao district in Shanghai, OXO City is connected to the Hongqiao Airport T2 terminal on its east side, and the Hongqiao Railway Station on its west. It is China's first commercial hub complex with a focus on both technology and art. At OXO City, the planned area LED displays will span is up to 6000m². At present, 1800m² of display area has already completed, in which the largest screen has a length of 113m. When 3D pictures of the sea are displayed on this huge screen, the visual experience is almost indistinguishable from waves rolling towards the naked eye, never failing to make an impression on observers. On the B1 floor is a cyberpunk cultural food street which is even more eye-catching. Nearly 40 LED displays are distributed across both sides of the street, integrating the virtual world with real life for a stylish entertainment and leisure experience.



Kaisa City Plaza, Guangzhou, China



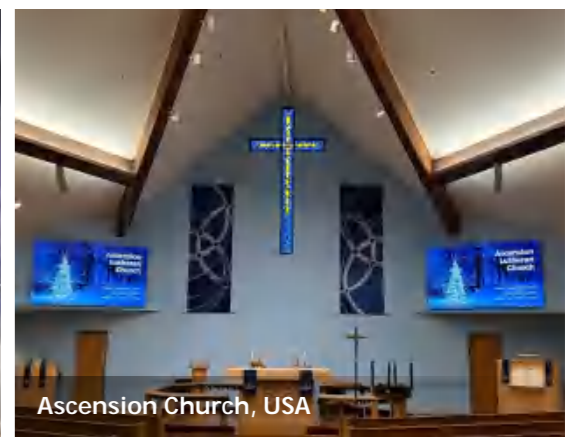
Casino Monticello, Chile



Yas Mall, Dubai



adidas Costanera Center, Chile



Ascension Church, USA



Monitoring Center of Guizhou Geological Museum



'Smart City Brain' of the Longgang Operation Centre

As one of the most important sub-projects in Shenzhen's Smart City project, the LOC required a display that would be big enough to deliver critical content with the highest image quality, while providing comfortable viewing experience and stability. Absen's P1.2 display is geared to receive 181 display signals and deal with the sheer amount of data to display them on up to 105 windows at 720p (40 windows at 1080p and 10 at 4K resolution).





Emergency Command Center of People's Public Security in Suzhou

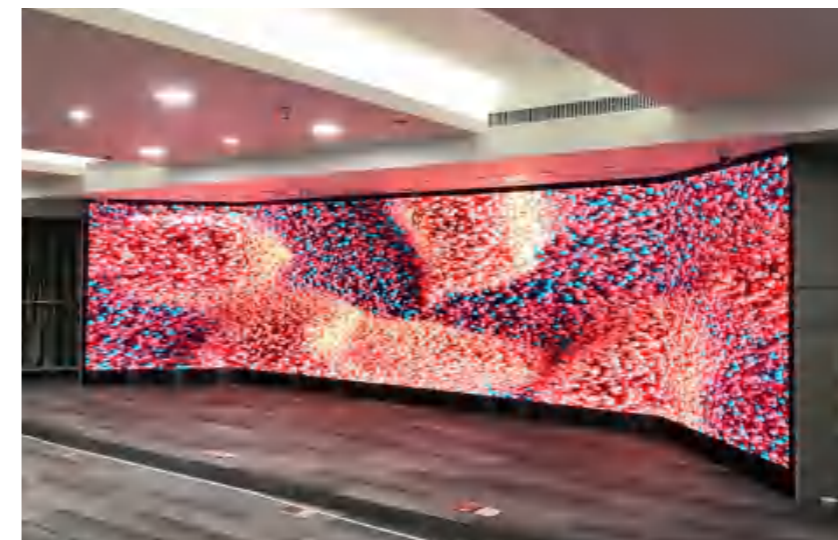
The Public Security Emergency Command Center in Suzhou has made extensive use of a large number of Absen's independently-developed fine pixel pitch displays, which cover a total area of 143m². With a curved design and close to 100 million pixels packed into one screen, these displays have been invaluable to the center, for whom the most important features include fine display, independent display, flexible coordination, and connection to multiple signals. In addition, round-the-clock operation is an option because of their stable, intelligent, and environmental performance. Command staff at the center are able to see 3D onsite scenes and video via the large screen, and can know the dispatch status of police officers and equipment based on their location. The displays have helped realize the goal of "viewing everything necessary to information exchange on one single screen", thus improving execution efficiency and reducing time spent on pursuing individual cases.



Liaocheng Chiping Xinfu Agricultural Comprehensive Hall



Yancheng Municipal Government Conference Room



Conference Room of Sinopec Guangzhou Engineering Company



SiChuan TV Studio



Video Conference Room of Russian Ministry of Agriculture



Peking University HSBC Business School

Ten sets of Absenicon, including 9 sets of Absenicon C220 and 1 set of Absenicon C165, were installed in Peking University HSBC Business School (PHBS), including its lecture hall that can accommodate more than 1,000 audience, the terrace classrooms and the financial lab. The installation of those FHD LED displays in the high-end education area was delivered in Oct. 2020.





Deloitte's New Innovation Center

Deloitte relies on Absenicon, an all-in-1 presentation solution specially tailored for meeting space of any sizes, to deliver the ultimate meeting experience in its meeting room that accommodates roughly 30 people at the 9th floor of the building. Designed to create bright, open and highly-productive meeting environment, Absenicon helps grab and maintain attendees' attention while improving information delivery effectiveness and overall efficiency, taking users' meeting room experience to the next level.

