



PADDOCK

POOL EQUIPMENT COMPANY

EMPLOYEE OWNED SINCE 2019

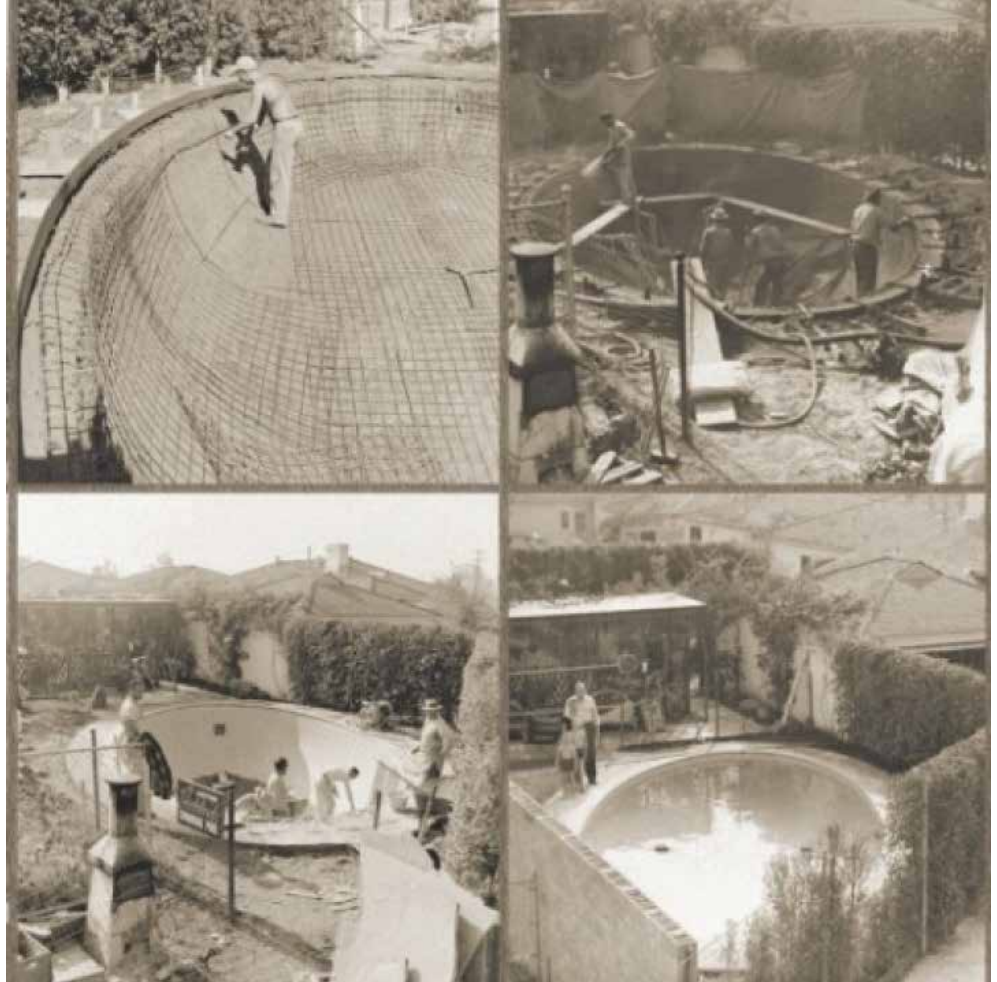
Unrivaled experience, quality & innovation

Setting the standard for American-made pools since 1922

Paddock's History

Swimming pools...movie stars... that's how Paddock got started back in the early 1920's, building America's first backyard pools on the estates of wealthy Southern Californians. Back then, a private pool had to be built with formed concrete using heavy machinery, an exorbitantly priced luxury available only to the top echelons of society. The idea caught on, and in a short time everybody wanted one. Paddock took the concept to the next level, and the modern pool industry was born.

In the 1930's, Paddock built the first 50-meter monolithic pool using pneumatically applied concrete (gunite) at the Biltmore Hotel in Santa Barbara. Soon, gunite was the method of choice for pool construction, enabling a new generation of specialized contractors to build affordable residential pools. By the 1940's, Paddock had established the first network of franchised dealers to build its standard designs around the country.



Paddock Pool Equipment Company was formed to manufacture high quality equipment for use in Paddock swimming pools. In the 1960's, Paddock Pool Equipment was reorganized and exclusively shifted its focus to commercial equipment. The Equipment Company took center stage, introducing a number of key innovations over the years such as stainless steel perimeter gutter, movable bulkhead, vacuum sand filter, and most recently the Paddock Evacuator[®], leading the way in improving air quality for indoor aquatic facilities. So when you see a modern commercial pool, consider the fact that Paddock Pool Equipment was integral in developing the products that you see today.



Paddock Perimeter Gutter Systems

Paddock Pool Equipment Company's state of the art manufacturing process ensures that every gutter is laser cut, formed, and welded to the exact drawing dimensions of each pool. The gutter is shipped to the job site in complete sections to minimize field welding by our factory certified technicians; not in multiple pieces like our competitors. When time is money, a Paddock gutter installs in days, not weeks, like the competition.

Paddock Pool Equipment Company developed the stainless steel reticulation system which incorporates multiple chambers for treated and untreated water, and directional inlet nozzles that increase laminar flow and significantly reduce the cost of plumbing required for the pool. Plumbing is only needed to send the dirty water from the gutter and main drains to the filter and the clean water back to the gutter supply tube. The Paddock system eliminates the additional pipes (and installation costs) needed to return clean water to floor or wall inlets used in a concrete gutter pool. Finally, the piping to the wall and floor inlets are all potential failure points and very expensive to repair, as they are buried under the concrete.

All of the TG (Top Grate) gutter systems with the exception of the R100, have the ability to add an extra chamber (EC), which can be used as a Paddock Evacuator[®] source capture chamber for removal of unwanted chloramines, or it can be used for additional surge capacity to reduce the size of the surge tank needed. A deck drain (DD) can also be integrated into the back of the gutter that could be used as a combination Evacuator[®] and deck drain.

All Paddock Gutter systems come with HDPE Grating. Computer driven CNC tables precisely machine all of our grating from HDPE so that they perfectly match the gutter. This marine grade HDPE is durable, UV stable, meets NASI B0101.1 Slip Resistance, and just may outlast your pool. Custom patterns and colors are available, as are stone grating options.



Paddock Gutter Systems



C100



C100TGDD



C100TGEC



M100



M100TG



M100TGDD



M100TGEC



M200DI



M200TG



M200TGDD



M200TGEC



R300 Radius



R300TG



R300TGDD



R300TGEC



R300DI



R100TG



R100TG
(shown with pavers)



R100TG
(shown with pavers)



R-Series Gutter Systems (R100 & R300)

The R-Series gutter systems from Paddock Pool Equipment is a unique application of proven engineering that provides superior performance without restricting creative possibilities. The free-form design allows for true radius to be applied to inverse corners, rounded stairs, zero depth areas, and spas for enhanced appearances and wide appeal to a variety of designs. The R-Series perimeter gutter systems allow for the aesthetic benefits of creative design, with the practicality of a “pipe-less” stainless steel recirculation system introduced by Paddock Pool Equipment Company over 40 years ago.

The R300TG has a spacious overflow channel and high-capacity filtered water return tube making it the perfect choice for wave pools, plunge pools, lazy rivers and heavy-use recreation pools of all shapes and sizes. Feel free to let the design side go wild, the R300 can meet the challenge.

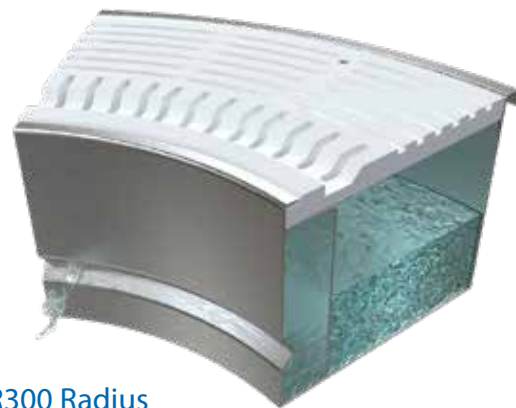
The R100TG was designed with hotel, HOA, leisure, and resort pools in mind. Providing better flow characteristics than a skimmer pool, the R100TG still features a high-capacity return tube and a large overflow channel sitting under a built-in paver deck shelf.

Features & Benefits

- Type 304L stainless steel or type 316L stainless steel (Type 316L recommended for indoor gutter systems)
- Durable stain resistant High Density Polyethylene (HDPE) grate
- Minimal exposed stainless steel
- Rim flow application
- Slip-resistant surface
- Nylon inlet nozzles for increased laminar flow and mixing

Options

- Inlaid depth markers (R300 Models only)
- Integrated Evacuator® Technology
- Additional surge capacity with extra chamber
- Combined deck drain
- Water agitator fitting
- Variety of deck to water configurations
- Paddock Evacuator®, a calculated and designed system that captures chloramines at deck level (source capture) while improving air quality throughout the facility; may earn points towards LEED certification



R300 Radius



M-Series Gutter Systems (M100 & M200)

Developed by Paddock, the M100 series is a single channel perimeter gutter, utilized for decades. The M200 is an oversized dimension with the same versatility of the M100. Paddock's factory fabrication and standard features still set the benchmark of quality.

Paddock's stainless steel gutter systems are the perfect choice for both competition and high-use recreational pools. The M series gutter can be custom-sized for any application, making them ideal for renovation.

Features & Benefits

- Jet wash fittings to enhance recirculation and prevent algae growth, Drop-in and Top Grate available
- High Density Polyethylene (HDPE) Grating with slip resistant surface
- Nylon Inlet nozzles for increased laminar flow and mixing
- Multiple depth to water options

Options

- Fabricated from Type 304L or 316L stainless steel (Type 316L is recommended for indoor gutter systems)
- Surge weirs
- Integral deck drain
- Bartlett end wall grating
- Removable tile inserts
- Can be custom sized for any application
- Paddock Evacuator®, a calculated and designed system that captures chloramines at deck level (source capture) while improving air quality throughout the facility; may earn points towards LEED certification
- Inlaid depth markers



M100

C-Series Gutter Systems (C100 & C300)

C100 Series

Paddock's C100 series is the first competition gutter system to introduce a dual channel perimeter, and is designed to eliminate random "point flooding" common to trench style overflow systems. Water from the pool enters the upper channel and transfers naturally to the covered lower channel continuously around the perimeter, ensuring a smooth surface, efficient recirculation, and uninterrupted surface cleaning. This unique inherent surge control capability reduces choppiness and creates fast, smooth water.

- Perfect choice for both competition, and high-use recreational pools.

C300 Series

Paddock's C300 series offers a three-channel perimeter gutter with a high-capacity system designed to control dynamic surge through use of an integrated Auxiliary Surge Recovery (ASR) chamber. Excess water in overflow channel is drawn by positive suction into covered ASR chamber when triggered by an automatic level sensor and returned immediately to the pool. The C300 ensures that the water level is maintained at rim, minimizes rebound of waves off the pool wall, and prevents the gutter from flooding.

- Perfect choice for both competition and high-use recreational pools
- Offers a smooth, fast water surface for competition pools

Options

- Inlaid depth markers
- Extra Chamber
- Paddock Evacuator®, a calculated and designed system that captures chloramines at deck level (source capture) while improving air quality throughout the facility; may earn points towards LEED certification



C100

Why Stainless Steel Gutter Is Right For You

Paddock Pool Equipment's Stainless Steel Gutters:

Build Requirements (Typical 45x75)

- Gutter anchors installed prior to pool pour/shoot on top of haunch are ready to accept gutter after pool cures.
- Gutter delivered to site 90% welded in factory and placed around pool to be seam welded. Typical install in 5 days or less.
- Only true radius stainless steel gutter option.
- Stainless Steel gutter is pressure tested and ready for use.
- Return tube in gutter eliminates need for floor/wall inlets on most pools.
- Machined HDPE Grating (UV stabilized, will not crack, delaminate, or absorb water) cam locked to gutter.
- Gutter available with Auxiliary Surge Recovery System to move surface water more efficiently and maintain rim flow.
- Installation time and labor greatly reduced.

Maintenance Requirements

- Minimum exposed stainless steel is easy to wipe down with normal deck cleaning.
- Jet wash fittings and smooth stainless-steel surface keep dirt and debris buildup to a minimum.
- Submerged SS gutter face requires little to no maintenance
- No paint of any kind required
- Gutter can be manufactured to receive tile face.
- Ease of winterization

Concrete Gutters:

Build Requirements (Typical 45x75)

- Gutter must be formed and poured/shot after pool is cured.
- Newly formed gutter must cure minimum 7 days before forms removed.
- Gutter must be waterproofed prior to tile, paint or plaster finish.
- Gutter must be finished with tile, paint or plaster.
- Requires 25-30 floor or wall inlets causing many penetrations in pool shell, all potential leak and maintenance issues & requiring hundreds of feet of buried PVC piping.
- Considerable time and labor to build concrete gutter = increased dollars spent.

Maintenance Requirements

- Concrete will crack over time and require patching and repair.
- Freeze and thaw in cold areas will spall concrete creating repair issues.
- Lack of Jet Wash fitting will require removal of grating and power washing to remove algae, dirt and debris.

Painted Gutter

- At minimum regular power washing.
- Stain scrubbing may be required.
- Regular repaint required.

Tile Gutter

- Anticipate tile grout discoloration – Regular cleaning
- Cracked concrete = cracked tile. Matching replacement tile can be difficult, keep stock of original tile. Regrouting will be required, grout color match also difficult.



Upgrade Your Gutter Grating

Swimming pool grating does not have to be one pattern and two colors. Introducing Paddock Premiere grating, four colors and our new patterns, Flow, Wave, and Surge.

HDPE Grating

Paddock Pool Equipment has enhanced their already proven grating system. We now offer the same HDPE, non-skid grating in your choice of Flow, Surge, and Wave designs to match your design needs. White, Dolphin Gray, Slate Gray, and Tuscan are currently available and can be custom cut for any available pattern. These options are all available in radius, and straight sections. Our customization options give you complete control over your design needs.



Flow

approx. 23% Open Area



Wave

approx. 33% Open Area



White



Dolphin Gray

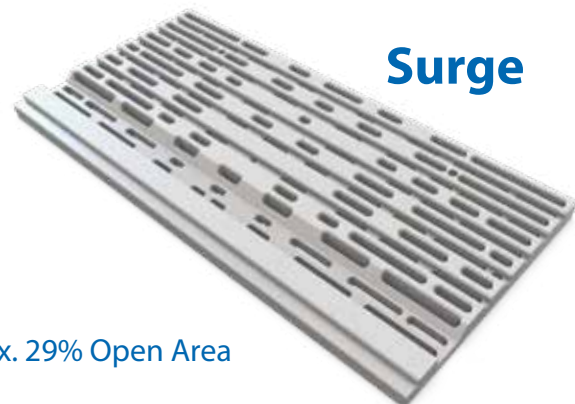
Upgraded Colors



Slate Gray



Tuscan



Surge

approx. 29% Open Area



One of the first Regenerative Media filters in the industry, and still arguably the best filter on the market today. Save money on water, chemicals, and electricity utilizing the Paddock Pool Equipment Company (PPEC) Regenerator, providing the pool facility the best water quality and return on investment.

Regenerator utilizes a user-friendly touch screen controller and innovative flexible filter elements to provide the most reliable and optimal particulate removal, down to one micron, and requires no backwashing. NSF® Approved for either Perlite or Diatomaceous Earth (D.E.).

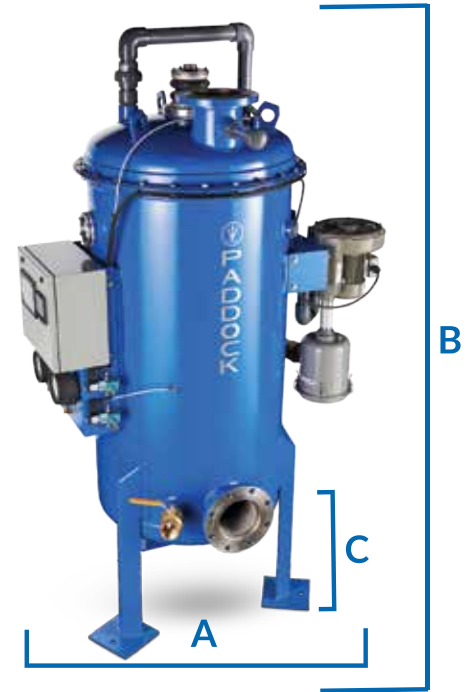
Features & Benefits

- Fully automated system with manual override options available
- Designed to operate full filtration range
- Integration with VFD and secondary components
- All models are NSF® listed
- Stainless steel components
- No backwashing conserving resources
- PPEC engineered bump mechanism
- Small footprint in equipment room
- Lower profile allowing access to more applications
- True ASME domed head for enhanced hydraulics
- No davit required to remove head for maintenance
- Reduces power usage, thermal heat loss, and chemical consumption
- 15 Year warranty, 40 year life use
- May earn LEED points



*Contact Manufacturer for assistance in proper plumbing layout

Regenerator Model #	Width 'A'	Height 'B'	Tank Inlet Connection 'C'	Maximum Design Filtration*	Effective Filtration Area
Unit	Inches	Inches	Inches	GPM/FT ²	FT ²
PPEC 225S*	27.00	89.750	23.438	1.60	208.7
PPEC 350S*	33.00	90.188	24.469	1.60	351.2
PPEC 500S*	39.5	95.500	27.500	1.60	519.4
PPEC 700S*	45.00	98.031	28.313	1.60	707.3
PPEC 900S*	50.63	104.344	30.125	1.60	819.0
PPEC 1275*	51.00	105.563	29.063	1.60	935.8
PPEC 1400S*	58.63	109.688	32.688	1.60	1141.0
PPEC 2100*	63.50	116.938	34.250	1.60	1538.8



Regenerator Model #	Flow Range	Tank Volume	PreCoat Perlite	PreCoat Diatomaceous Earth (DE)**	Operating Weight	Shipping Weight	PreCoat Pipe	Tank Connection Inlet & Effluent
Unit	GPM	Gallons	Pounds	Pounds	Pounds	Pounds	Ø, Inches	Ø, Inches
PPEC 225S*	212 - 335	129	26.0	50	1500	1025	3	4
PPEC 350S*	337 - 565	244	41.0	79	2600	1300	4	6
PPEC 500S*	528 - 835	291	65.5	126	4250	1750	4	6
PPEC 700S*	719 - 1138	396	82.0	158	4800	2200	6	8
PPEC 900S*	819 - 1310	496	95.0	190	6000	3100	6	8
PPEC 1275*	950 - 1505	525	109.0	210	6500	3100	6	8
PPEC 1400S*	1141 - 1825	721	135.0	260	9900	4100	8	10
PPEC 2100*	1560 - 2490	890	182.0	350	11600	5800	8	10

**Preferred Media

Drain Connection Note: All models have a 4" drain connection.

Stainless Steel Horizontal Pressure Sand Filter

Paddock Pool Equipment Company's (PPEC) stainless steel horizontal pressure sand filters are the most durable and versatile of their kind in today's market. Our various size offerings make sizing for any space and flow requirements easy.

PPEC stainless steel pressure sand filters have been the standard of the industry for over 40 years. With numerous sizes and models to choose from and a variety of fabrication options, PPEC is the first choice for pressure sand filtration. Pressure sand filters provide the most options for economical commercial filtration. Dual-cell horizontal filters, made exclusively by PPEC, are often used where backwash flow capacity is limited, allowing for cost and space saving without compromising performance.



Features & Benefits

- All models are NSF® listed and range in size from 36" to 96" in diameter with 48" to 144" body length
- Single lever manual linkage
- Type 316L stainless steel construction
- Non-corrosive internals

DETAILS

- 1 Manway cover
- 2 Air relief valve
- 3 Influent pipe
- 4 Effluent pipe
- 5 Paddock NSF® name plate
- 6 Drain connection
- 7 Lifting lugs, (4) Total



Options

- ASME code & labeled filters
- Dual-Cell filters allow for individual cells to backwash one at a time and reduce rate by 50% and size of waste line
- Automatic control
- Type 304L stainless steel construction
- Stacked units



Stainless Steel Horizontal Pressure Sand Filter

Available in 1-Cell (as shown in chart below) or 2-Cell (features two filtrations in a single tank, and can backwash one cell at a time)

Dia.	Shell Length	4'	5'	6'	7'	8'	9'	10'	11'	12'
36"	Model #	6723-H-4	6723-H-5	6723-H-6	6723-H-7	6723-H-8	6723-H-9	6723-H-10	6723-H-11	6723-H-12
	Area	14	17	20	23	26	29	32	35	38
	Flow @ 15	210	255	300	345	390	435	480	525	570
	Pipe Size	4	4	4	4	6	6	6	6	6
42"	Model #	6724-H-4	6724-H-5	6724-H-6	6724-H-7	6724-H-8	6724-H-9	6724-H-10	6724-H-11	6724-H-12
	Area	16.5	20	23.5	27	30.5	34	37.5	41	44.5
	Flow @ 15	248	300	353	406	458	510	563	615	668
	Pipe Size	4	4	4	6	6	6	6	6	6
48"	Model #	6725-H-4	6725-H-5	6725-H-6	6725-H-7	6725-H-8	6725-H-9	6725-H-10	6725-H-11	6725-H-12
	Area	19.15	23.15	27.15	31.15	35.15	39.15	43.15	47.15	51.15
	Flow @ 15	287	347	407	467	527	587	647	707	767
	Pipe Size	4	4	6	6	6	6	6	6	6
54"	Model #	6726-H-4	6726-H-5	6726-H-6	6726-H-7	6726-H-8	6726-H-9	6726-H-10	6726-H-11	6726-H-12
	Area	22	26.5	31	35.5	40	44.5	49	53.5	58
	Flow @ 15	330	397	465	533	600	668	735	803	870
	Pipe Size	4	4	6	6	6	6	6	6	8
60"	Model #	6724-H-4	6727-H-5	6727-H-6	6727-H-7	6727-H-8	6727-H-9	6727-H-10	6727-H-11	6727-H-12
	Area	24.87	29.87	34.87	39.87	44.87	49.87	54.87	59.87	64.87
	Flow @ 15	373	448	523	598	673	748	823	898	973
	Pipe Size	6	6	6	6	6	6	8	8	8
66"	Model #	6728-H-4	6728-H-5	6728-H-6	6728-H-7	6728-H-8	6728-H-9	6728-H-10	6728-H-11	6728-H-12
	Area	27.83	33.33	38.83	44.33	49.83	55.33	60.83	66.33	71.83
	Flow @ 15	417	500	582	665	747	830	912	995	1077
	Pipe Size	6	6	6	6	6	8	8	8	8
72"	Model #	6729-H-4	6729-H-5	6729-H-6	6729-H-7	6729-H-8	6729-H-9	6729-H-10	6729-H-11	6729-H-12
	Area	31	37	43	49	55	61	67	73	79
	Flow @ 15	465	555	645	735	825	915	1005	1095	1185
	Pipe Size	6	6	6	6	8	8	8	8	8
78"	Model #	6730-H-4	6730-H-5	6730-H-6	6730-H-7	6730-H-8	6730-H-9	6730-H-10	6730-H-11	6730-H-12
	Area	34.19	40.69	47.19	53.69	60.19	66.69	73.19	79.69	86.19
	Flow @ 15	513	610	708	805	903	1000	1098	1195	1293
	Pipe Size	6	6	6	8	8	8	8	8	8
84"	Model #	6731-H-4	6731-H-5	6731-H-6	6731-H-7	6731-H-8	6731-H-9	6731-H-10	6731-H-11	6731-H-12
	Area	37.42	44.42	51.42	58.42	65.42	72.42	79.42	86.42	93.42
	Flow @ 15	561	666	771	876	981	1086	1191	1296	1401
	Pipe Size	6	6	6	8	8	8	8	8	8
90"	Model #	6732-H-4	6732-H-5	6732-H-6	6732-H-7	6732-H-8	6732-H-9	6732-H-10	6732-H-11	6732-H-12
	Area	40.8	48.6	55.8	63.3	70.8	78.3	85.8	93.3	100.8
	Flow @ 15	612	729	837	950	1062	1175	1287	1400	1512
	Pipe Size	6	6	8	8	8	8	8	8	10
96"	Model #	6733-H-4	6733-H-5	6733-H-6	6733-H-7	6733-H-8	6733-H-9	6733-H-10	6733-H-11	6733-H-12
	Area	44.25	52.24	60.25	68.25	76.25	84.25	92.25	100.25	108.25
	Flow @ 15	664	787	904	1024	1144	1264	1384	1504	1624
	Pipe Size	6	6	8	8	8	8	8	10	10

Stainless Steel Pressure Sand Filter Vertical & High Flow

Single, Dual, or Three Cell Designs

Our vertically oriented pressure sand filters come in single, dual, or three cell designs providing the most efficient pressure filtration with limited floor space.

Efficient filtration in space saving vertical design is the key with this line of filters. The filters with two or three vertically oriented cells are backwashed individually and sequentially with filtered water, reducing flow of water to waste, provide a reduction in piping, and elimination of holding tanks. A unique feature offered by Paddock is the domed head design that divides the cells. A flat plate used by others can deflect and may damage internal components during operation.

Features & Benefits

- All models are NSF® listed and range from 36" to 120" diameter
- One, two, or three cells
- Type 316L Stainless Steel construction suited for durability
- Non-corrosive internals
- Small footprint in equipment room

Options

- ASME code & labeled filters
- Automatic control
- Single-lever manual linkage
- Type 304L stainless steel construction
- Carbon steel with UL listed lining



Vertical - Dual Cell or Three Cell



High Flow - One Cell



Stainless Steel Pressure Sand Filter Vertical & High Flow Chart

STAINLESS STEEL HIGH FLOW FILTER				
Dia. Size	Model	Area	Flow @ 15 GPM/ FT ²	Pipe Size
36	6703-15	7.07	106	2.5
42	6704-15	19.24	144	3
48	6705-15	12.57	189	3
54	6706-15	15.9	239	4
60	6707-15	19.6	294	4
66	6708-15	23.8	357	4
72	6709-15	28.27	424	6
78	6710-15	33.2	498	6
84	6711-15	38.48	577	6
90	6712-15	44.19	663	6
96	6713-15	50.26	754	6
102	6714-15	56.74	851	8
108	6715-15	63.61	954	8
114	6716-15	70.88	1063	8
120	6717-15	78.54	1178	8

STAINLESS STEEL VERTICAL FILTER - 2 - CELL				
Dia. Size	Model	Area	Flow @ 15 GPM/ FT ²	Pipe Size
36	6723-V-3C	21.21	318	3
42	6724-V-3C	28.86	432	4
48	6725-V-3C	39.21	588	6
54	6726-V-3C	47.7	715	6
60	6727-V-3C	58.8	882	6
66	6728-V-3C	71.4	1071	6
72	6729-V-3C	84.84	1272	8
78	6730-V-3C	99.6	1494	8
84	6731-V-3C	115.44	1731	8
90	6732-V-3C	132.57	1988	8
96	6733-V-3C	150.78	2261	10
102	6734-V-3C	170.22	2553	10
108	6735-V-3C	190.83	2862	10
114	6736-V-3C	212.64	3189	10
120	6737-V-3C	235.62	3534	12



STAINLESS STEEL VERTICAL FILTER - 3 - CELL				
Dia. Size	Model	Area	Flow @ 15 GPM/FT ²	Pipe Size
36	6723-V-3C	21.21	318	3
42	6724-V-3C	28.86	432	4
48	6725-V-3C	39.21	588	6
54	6726-V-3C	47.7	715	6
60	6727-V-3C	58.8	882	6
66	6728-V-3C	71.4	1071	6
72	6729-V-3C	84.84	1272	8
78	6730-V-3C	99.6	1494	8
84	6731-V-3C	115.44	1731	8
90	6732-V-3C	132.57	1988	8
96	6733-V-3C	150.78	2261	10
102	6734-V-3C	170.22	2553	10
108	6735-V-3C	190.83	2862	10
114	6736-V-3C	212.64	3189	10
120	6737-V-3C	235.62	3534	12



Fiberglass Horizontal Pressure Sand Filter

Paddock Pool Equipment Company's (PPEC) fiberglass horizontal pressure sand filters are the most durable and versatile of their kind in today's market. Our various size offerings make sizing for any space and flow requirements easy.

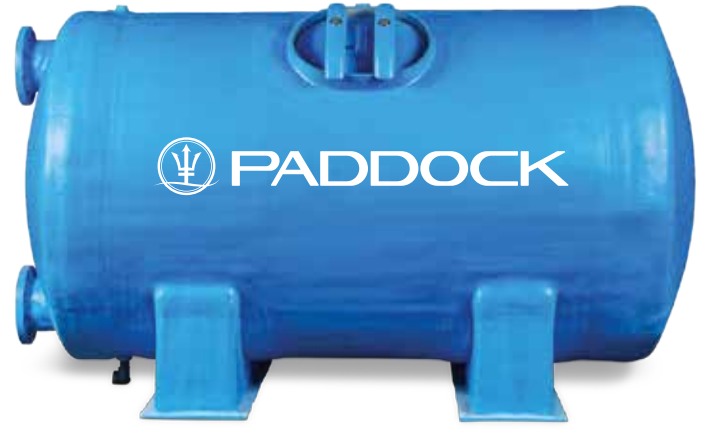
Features & Benefits

Our fiberglass filters are designed to meet the same performance specifications of Paddock's stainless steel horizontal filters. Ranging from 16.5 ft² of area to 134 ft² of area, our Horizontal Fiberglass Series can be used in virtually any commercial aquatic application.

- All models are NSF® listed
- Fiberglass construction
- Sizes range from 32" to 60" diameter, 72" to 172" overall length
- Non-corrosive tank and internals

Options

- Automatic control
- Manway can be placed on right or left side
- Units Available
 - Single-Unit: one tank
 - Dual-Unit: two tanks side by side
 - Dual Stacked: two tanks
 - Dual Unit
 - Stacked
 - Side by Side

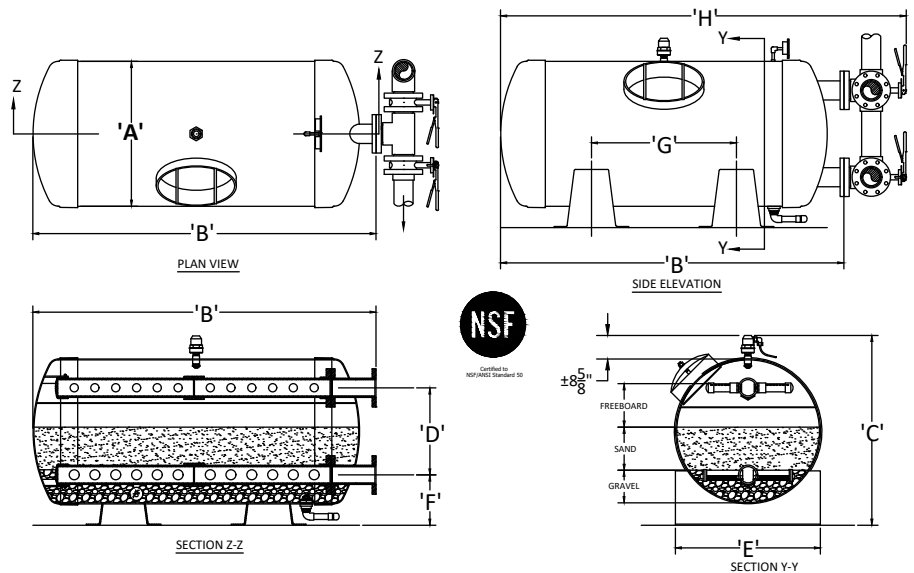


SINGLE UNIT PADDOCK FIBERGLASS HORIZONTAL FILTERS

Model No.	Dia.	Filter Area	Filter Rate	Backwash Rate*	Tank Conn. Size	Overdrain LAT's/Tank	Underdrain LAT's/Tank	Media Per Tank (CU FT)		DIM. 'A'	DIM. 'B'	DIM. 'C'	DIM. 'D'
			15 GPM/FT ²	15 GPM/FT ²				SAND	GRAVEL				
HZF-34-16.5	34"	16.5 FT ²	247.5 GPM	247.5 GPM	4"	24	24	11.60	6.06	2'-10"	6'-7"	3'-8 3/4"	1'-8 1/2"
HZF-36-20	36"	20 FT ²	300 GPM	300 GPM	6"	24	24	15.64	5.84	3'-0"	7'-5"	3'-10 3/4"	1'-10 1/2"
HZF-36-23	36"	23 FT ²	345 GPM	345 GPM	6"	26	26	17.96	6.75	3'-0"	8'-5"	3'-10 3/4"	1'-10 1/2"
HZF-36-25	36"	25 FT ²	375 GPM	375 GPM	6"	28	28	19.59	7.45	3'-0"	9'-1"	3'-10 3/4"	1'-10 1/2"
HZF-42-24	42"	24 FT ²	360 GPM	360 GPM	6"	20	20	23.75	7.56	3'-6"	7'-7"	4'-4 3/4"	2'-4 1/2"
HZF-42-27	42"	27 FT ²	405 GPM	405 GPM	6"	24	24	27.70	7.65	3'-6"	8'-4 1/2"	4'-4 3/4"	2'-4 1/2"
HZF-42-30	42"	30 FT ²	450 GPM	450 GPM	6"	28	28	29.53	9.44	3'-6"	9'-3 1/2"	4'-4 3/4"	2'-4 1/2"
HZF-42-33	42"	33 FT ²	495 GPM	495 GPM	6"	32	32	32.30	10.40	3'-6"	10'-1"	4'-4 3/4"	2'-4 1/2"
HZF-42-35	42"	35 FT ²	525 GPM	525 GPM	6"	36	36	35.30	9.74	3'-6"	10'-9 1/2"	4'-4 3/4"	2'-4 1/2"
HZF-48-23	48"	23 FT ²	345 GPM	345 GPM	6"	16	16	25.82	6.05	4'-0"	6'-0 3/8"	4'-10 3/4"	2'-10 1/2"
HZF-48-25	48"	25 FT ²	375 GPM	375 GPM	6"	18	28	29.50	7.94	4'-0"	6'-9 3/8"	4'-10 3/4"	2'-10 1/2"
HZF-48-30	48"	30 FT ²	450 GPM	450 GPM	6"	22	22	34.64	8.38	4'-0"	8'-0"	4'-10 3/4"	2'-10 1/2"
HZF-48-34	48"	34 FT ²	540 GPM	510 GPM	6"	28	28	41.00	9.00	4'-0"	8'-11 3/4"	4'-10 3/4"	2'-10 1/2"
HZF-48-37	48"	37 FT ²	555 GPM	555 GPM	6"	32	32	44.05	10.96	4'-0"	9'-9 3/8"	4'-10 3/4"	2'-10 1/2"
HZF-48-42	48"	42 FT ²	630 GPM	630 GPM	6"	36	36	50.00	11.00	4'-0"	11'-0 3/8"	4'-10 3/4"	2'-10 1/2"
HZF-48-46	48"	46 FT ²	690 GPM	690 GPM	6"	40	40	54.95	12.00	4'-0"	12'-0 3/8"	4'-10 3/4"	2'-10 1/2"
HZF-48-50	48"	50 FT ²	750 GPM	750 GPM	6"	44	44	59.84	15.14	4'-0"	12'-11 3/4"	4'-10 3/4"	2'-10 1/2"
HZF-60-35	60"	35 FT ²	525 GPM	525 GPM	6"	22	44	50.00	16.76	5'-0"	7'-9 7/8"	5'-10 3/4"	3'-2 1/2"
HZF-60-40	60"	40 FT ²	600 GPM	600 GPM	6"	26	52	55.56	18.34	5'-0"	8'-9 7/8"	5'-10 3/4"	3'-2 1/2"
HZF-60-46	60"	46 FT ²	690 GPM	690 GPM	6"	32	64	64.82	21.54	5'-0"	10'-1 7/8"	5'-10 3/4"	3'-2 1/2"
HZF-60-52	60"	52 FT ²	780 GPM	780 GPM	6"	36	72	69.34	21.70	5'-0"	11'-3 7/8"	5'-10 3/4"	3'-2 1/2"
HZF-60-60	60"	60 FT ²	900 GPM	900 GPM	8"	42	84	83.24	27.08	5'-0"	12'-11"	5'-10 3/4"	3'-2 1/2"
HZF-60-67	60"	67 FT ²	1,005 GPM	1,005 GPM	8"	48	96	93.00	30.20	5'-0"	14'-3 7/8"	5'-10 3/4"	3'-2 1/2"

Model No.	DIM. 'E'	DIM. 'F'	DIM. 'G'	DIM. 'H'
HZF-34-16.5	2'-10"	11 5/8"	2'-6"	7'-9 1/2"
HZF-36-20	3'-2"	11 5/8"	3'-6"	8'-7 1/2"
HZF-36-23	3'-2"	11 5/8"	4'-0"	9'-10 3/4"
HZF-36-25	3'-2"	11 5/8"	4'-4"	10'-6 3/4"
HZF-42-24	3'-2"	11 5/8"	3'-6"	9'-0 3/4"
HZF-42-27	3'-2"	11 5/8"	4'-0"	9'-7"
HZF-42-30	3'-2"	11 5/8"	4'-6"	10'-6"
HZF-42-33	3'-2"	11 5/8"	5'-0"	11'-3 1/2"
HZF-42-35	3'-2"	11 5/8"	5'-6"	12'-0"
HZF-48-23	3'-2"	11 5/8"	2'-0"	7'-2 7/8"
HZF-48-25	3'-2"	11 5/8"	2'-6"	7'-11 7/8"
HZF-48-30	3'-2"	11 5/8"	3'-6"	9'-5 3/4"
HZF-48-34	3'-2"	11 5/8"	4'-0"	10'-2 1/4"
HZF-48-37	3'-2"	11 5/8"	4'-6"	10'-7 7/8"
HZF-48-42	3'-2"	11 5/8"	5'-0"	12'-2 7/8"
HZF-48-46	3'-2"	11 5/8"	5'-6"	12'-9"
HZF-48-50	3'-2"	11 5/8"	6'-0"	14'-2 1/4"
HZF-60-35	5'-5"	15 5/8"	3'-0"	9'-0 3/8"
HZF-60-40	5'-5"	15 5/8"	3'-3"	10'-3 3/8"
HZF-60-46	5'-5"	15 5/8"	4'-2"	11'-3 3/8"
HZF-60-52	5'-5"	15 5/8"	5'-0"	12'-6 3/8"
HZF-60-60	5'-5"	15 5/8"	6'-0"	14'-8 3/8"
HZF-60-67	5'-5"	15 5/8"	6'-6"	15'-6 3/8"

PADDOCK FIBERGLASS HORIZONTAL FILTERS



Single Unit

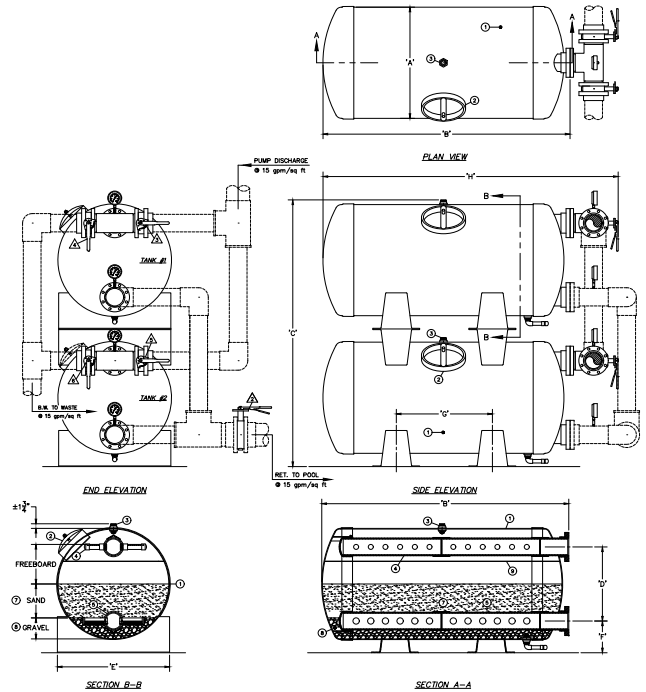
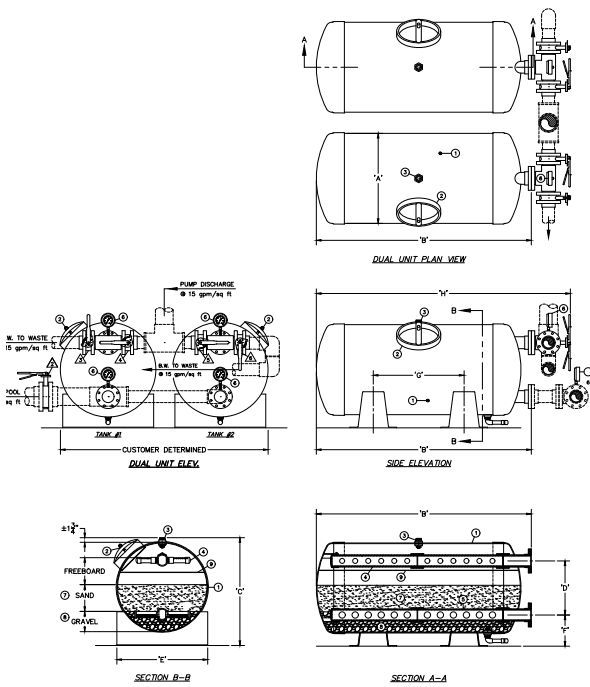


Dual Unit Side By Side

Model No.	Dia.	Filter Area	Filter Rate		Tank Conn. Size	Media Per Tank (CU FT)		DIM. 'A'	DIM. 'B'	DIM. 'C'	DIM. 'D'	DIM. 'E'	DIM. 'F'	DIM. 'G'	DIM. 'H'
			15 GPM/ FT ²	15 GPM/ FT ²		SAND	GRAVEL								
HZF-34-33	34"	33 FT ²	495 GPM	247.5 GPM	4"	32.2	12.12	2'-10"	6'-8 1/2"	3'-4 3/4"	1'-8 3/8"	2'-10"	11 13/16"	2'-10"	7'-11 1/8"
HZF-42-48	42"	48 FT ²	720 GPM	360 GPM	6"	47.50	15.13	3'-6"	7'-8 1/2"	4'-0 3/4"	2'-4"	3'-6"	1'-0"	3'-0"	9'-2 9/16"
HZF-48-60	48"	60 FT ²	900 GPM	450 GPM	6"	69.28	16.76	4'-0"	7'-9"	4'-6 3/4"	2'-10 1/2"	4'-0"	11 3/4"	3'-0"	9'-3 1/16"
HZF-60-70	60"	70 FT ²	1,050 GPM	1050 GPM	6"	100.00	33.52	5'-0"	7'-9 5/8"	5'-7 1/4"	3'-1 3/4"	4'-11"	1'-4 1/4"	2'-6"	9'-3 7/16"
HZF-60-80	60"	80 FT ²	1,200 GPM	1200 GPM	6"	111.12	36.68	5'-0"	8'-9 3/8"	5'-7 1/4"	3'-1 3/2"	4'-11"	1'-4 1/4"	3'-0"	10'-3 7/16"

Dual Units Stacked Paddock Fiberglass Filters

Model No.	Dia.	Filter Area	Filter Rate		Tank Conn. Size	Media Per Tank (CU FT)		DIM. 'A'	DIM. 'B'	DIM. 'C'	DIM. 'D'	DIM. 'E'	DIM. 'F'	DIM. 'G'	DIM. 'H'
			15 GPM/ FT ²	15 GPM/ FT ²		SAND	GRAVEL								
HZF-34-33	34"	33 FT ²	495 GPM	247.5 GPM	4"	32.2	12.12	2'-10"	6'-8 1/2"	3'-4 3/4"	1'-8 3/8"	2'-10"	11 13/16"	2'-10"	7'-11 1/8"
HZF-42-48	42"	48 FT ²	720 GPM	360 GPM	6"	47.50	15.13	3'-6"	7'-8 1/2"	4'-0 3/4"	2'-4"	3'-6"	1'-0"	3'-0"	9'-2 9/16"
HZF-48-60	48"	60 FT ²	900 GPM	450 GPM	6"	69.28	16.76	4'-0"	7'-9"	4'-6 3/4"	2'-10 1/2"	4'-0"	11 3/4"	3'-0"	9'-3 1/16"



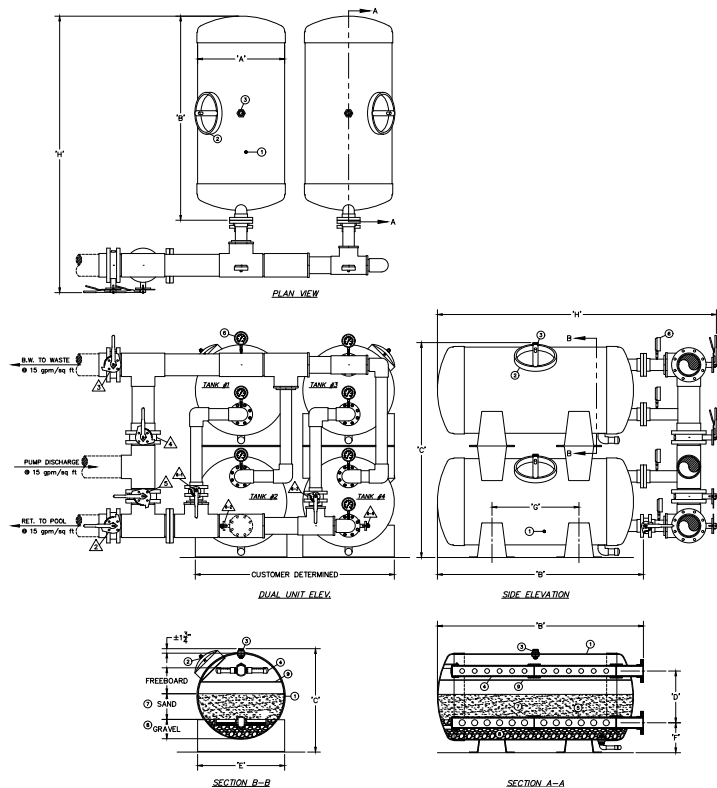
Side By Side

Dual Unit



PADDOCK FIBERGLASS HORIZONTAL FILTERS - DUAL STACKED UNIT

Model No.	Dia.	Filter Area	Filter Rate	Backwash Rate*	Tank Conn. Size	Overdrain LAT's/Tank	Underdrain LAT's/Tank	Media Per Tank (CU FT)		DIM. 'A'	DIM. 'B'	DIM. 'C'	DIM. 'C1'
			15 GPM/FT ²	15 GPM/FT ²				SAND	GRAVEL				
HZF-34-33	34"	33 FT ²	495 GPM	247.5 GPM	4"	48	48	23.20	12.12	2'-10"	6'-7"	3'-8 3/4"	7'-4 1/2"
HZF-36-40	36"	40 FT ²	600 GPM	300 GPM	6"	48	48	31.28	11.68	3'-0"	7'-5"	3'-10 3/4"	7'-8 1/2"
HZF-36-46	36"	46 FT ²	690 GPM	345 GPM	6"	52	52	35.67	13.50	3'-0"	8'-5"	3'-10 3/4"	7'-8 1/2"
HZF-36-50	36"	50 FT ²	750 GPM	375 GPM	6"	56	56	39.18	14.90	3'-0"	9'-1"	3'-10 3/4"	7'-8 1/2"
HZF-42-48	42"	48 FT ²	720 GPM	360 GPM	6"	40	40	47.50	15.13	3'-6"	7'-7"	4'-4 3/4"	8'-8 1/2"
HZF-42-54	42"	54 FT ²	810 GPM	405 GPM	6"	48	48	55.40	15.30	3'-6"	8'-4 1/2"	4'-4 3/4"	8'-8 1/2"
HZF-42-60	42"	60 FT ²	900 GPM	450 GPM	6"	56	56	59.06	18.88	3'-6"	9'-3 1/2"	4'-4 3/4"	8'-8 1/2"
HZF-42-66	42"	66 FT ²	990 GPM	495 GPM	6"	64	64	64.60	20.8	3'-6"	10'-1"	4'-4 3/4"	8'-8 1/2"
HZF-42-70	42"	70 FT ²	1,050 GPM	525 GPM	6"	72	72	70.60	19.48	3'-6"	10'-9 1/2"	4'-4 3/4"	8'-8 1/2"
HZF-48-46	48"	46 FT ²	690 GPM	345 GPM	6"	32	32	51.64	12.10	4'-0"	6'-0 3/8"	4'-10 3/4"	9'-8 1/2"
HZF-48-50	48"	50 FT ²	750 GPM	375 GPM	6"	36	36	59.00	15.88	4'-0"	6'-9 3/8"	4'-10 3/4"	9'-8 1/2"
HZF-48-60	48"	60 FT ²	900 GPM	450 GPM	6"	44	44	69.28	16.76	4'-0"	8'-0"	4'-10 3/4"	9'-8 1/2"
HZF-48-68	48"	68 FT ²	1,020 GPM	510 GPM	6"	56	56	82.00	18.00	4'-0"	8'-11 3/4"	4'-10 3/4"	9'-8 1/2"
HZF-48-74	48"	74 FT ²	1,110 GPM	555 GPM	6"	64	64	88.10	21.92	4'-0"	9'-9 3/8"	4'-10 3/4"	9'-8 1/2"
HZF-48-84	48"	84 FT ²	1,260 GPM	630 GPM	6"	72	72	100.00	22.00	4'-0"	11'-0 3/8"	4'-10 3/4"	9'-8 1/2"
HZF-48-92	48"	92 FT ²	1,380 GPM	690 GPM	6"	80	80	109.90	24.00	4'-0"	12'-0 3/8"	4'-10 3/4"	9'-8 1/2"
HZF-48-100	48"	100 FT ²	1,500 GPM	750 GPM	6"	88	88	119.68	30.28	4'-0"	12'-11 3/4"	4'-10 3/4"	9'-8 1/2"
HZF-60-70	60"	70 FT ²	1,050 GPM	525 GPM	6"	44	88	100.00	33.52	5'-0"	7'-9 7/8"	5'-10 3/4"	11'-8 1/2"
HZF-60-80	60"	80 FT ²	1,200 GPM	600 GPM	6"	52	104	111.12	36.68	5'-0"	8'-9 7/8"	5'-10 3/4"	11'-8 1/2"
HZF-60-92	60"	92 FT ²	1,380 GPM	690 GPM	6"	64	128	129.64	43.08	5'-0"	10'-1 7/8"	5'-10 3/4"	11'-8 1/2"
HZF-60-104	60"	104 FT ²	1,560 GPM	780 GPM	6"	72	144	138.68	43.40	5'-0"	11'-3 7/8"	5'-10 3/4"	11'-8 1/2"
HZF-60-120	60"	120 FT ²	1,800 GPM	900 GPM	8"	84	168	166.48	54.16	5'-0"	12'-11"	5'-10 3/4"	11'-8 1/2"
HZF-60-134	60"	134 FT ²	2,010 GPM	1,005 GPM	8"	96	192	186.00	60.40	5'-0"	14'-3 7/8"	5'-10 3/4"	11'-8 1/2"



Model No.	DIM. 'D'	DIM. 'E'	DIM. 'F'	DIM. 'G'	DIM. 'H'
HZF-34-33	1'-8 1/2"	2'-10"	11 5/8"	2'-6"	9'-6"
HZF-36-40	1'-10 1/2"	3'-2"	11 5/8"	3'-6"	10'-4"
HZF-36-46	1'-10 1/2"	3'-2"	11 5/8"	4'-0"	11'-4"
HZF-36-50	1'-10 1/2"	3'-2"	11 5/8"	4'-4"	12'-0"
HZF-42-48	2'-4 1/2"	3'-2"	11 5/8"	3'-6"	10'-6"
HZF-42-54	2'-4 1/2"	3'-2"	11 5/8"	4'-0"	11'-3 1/2"
HZF-42-60	2'-4 1/2"	3'-2"	11 5/8"	4'-6"	11'-9"
HZF-42-66	2'-4 1/2"	3'-2"	11 5/8"	5'-0"	12'-7"
HZF-42-70	2'-4 1/2"	3'-2"	11 5/8"	5'-6"	13'-8 1/2"
HZF-48-46	2'-10 1/2"	3'-2"	11 5/8"	2'-0"	8'-11 3/8"
HZF-48-50	2'-10 1/2"	3'-2"	11 5/8"	2'-6"	9'-8 3/8"
HZF-48-60	2'-10 1/2"	3'-2"	11 5/8"	3'-6"	10'-11"
HZF-48-68	2'-10 1/2"	3'-2"	11 5/8"	4'-0"	11'-11 3/8"
HZF-48-74	2'-10 1/2"	3'-2"	11 5/8"	4'-6"	12'-8 3/8"
HZF-48-84	2'-10 1/2"	3'-2"	11 5/8"	5'-0"	14'-0 3/8"
HZF-48-92	2'-10 1/2"	3'-2"	11 5/8"	5'-6"	14'-2 1/4"
HZF-48-100	2'-10 1/2"	3'-2"	11 5/8"	6'-0"	15'-11 3/8"
HZF-60-70	3'-2 1/2"	5'-5"	15 5/8"	3'-0"	10'-10 7/8"
HZF-60-80	3'-2 1/2"	5'-5"	15 5/8"	3'-3"	11'-8 5/8"
HZF-60-92	3'-2 1/2"	5'-5"	15 5/8"	4'-2"	12'-8 5/8"
HZF-60-104	3'-2 1/2"	5'-5"	15 5/8"	5'-0"	13'-11 5/8"
HZF-60-120	3'-2 1/2"	5'-5"	15 5/8"	6'-0"	16'-1 5/8"
HZF-60-134	3'-2 1/2"	5'-5"	15 5/8"	6'-6"	16'-11 5/8"

Multiple Configuration



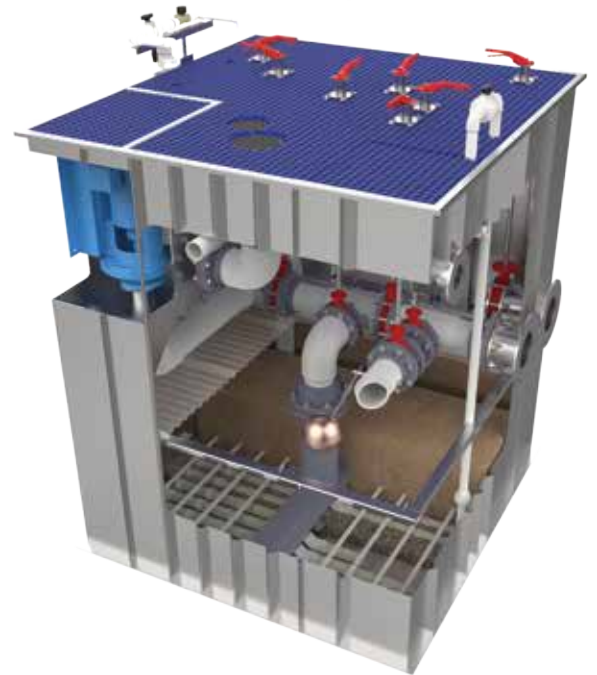
Compak Vacuum Sand Filter

Compak model Vacuum Sand Filter is unique to the industry in design and performance, combining the highest quality filtration with unmatched efficiency in operation. Combining exceptional filtration, water clarity, and unmatched efficiency in a space saving design makes these some of the best filters available.

Long filter runs help reduce water consumption and provide significant chemical savings. Adding Evacuator® Technology around the perimeter reduces corrosive airborne particulates, which saves the facility money, especially on indoor Compaks.

Features & Benefits

- All models are NSF® listed ranging from 30 FT²-240 FT² of area
- Type 316L stainless steel construction
- Air scour reduces backwashing, conserving resources
- Filter houses pumps, pipes, valves, & media
- Fiberglass protective covering
- Non-corrosive internals
- May eliminate or reduce surge requirements
- Perforated equalization screen for balanced influent distribution
- Built for long-term, heavy-duty use
- Evacuator® Technology vents corrosive air off of surface
- May earn points toward LEED certification



Featuring
PADDOCK
EVACUATOR
CHLORAMINE REMOVAL SYSTEM
Technology



Compak Vacuum Sand Filter Chart

Size	Model	Filter Rate in GPM@	Backwash Rate @	Tank Volume	Length	Width	M.D. & P.O, Pipe Std.	Ret./BE Pipe Std.	Shipping Weight	Media Capacity Cu. FT.	
FT ²	Number	15 GPM/ FT ²	7.5 GPM/ FT ²	Gal.	A, in.	B, in.	Sizes-D, in.	D, in.	lbs	Sand	Gravel
30	9792-1530	450	225	2496	82	85	8	6	2600	47	9
35	9792-1535	525	262	2496	82	85	10	6	2900	48	10
40	9794-1540	600	300	2633	91	85	10	6	3200	60	11
45	9794-1545	675	337	3127	91	94	10	6	3500	67	12
50	9794-1550	750	375	3450	100	94	12	6	3600	75	14
55	9794-1555	825	412	3706	106	96	12	6	3700	85	16
60	9795-1560	900	450	3924	112	96	12	6	3900	89	18
65	9795-1565	975	487	4142	118	95	12	8	4100	96	20
70	9795-1570	1050	525	4505	128	96	12	8	4400	103	22
75	9795-1575	1125	562	4978	141	96	14	8	4600	114	25
80	9796-1580	1200	600	5123	145	96	14	8	4800	125	26
85	9796-1585	1275	637	5450	154	96	16	8	5000	131	27
90	9796-1590	1350	675	5741	162	96	16	8	5400	138	29
95	9796-1595	1425	712	6068	171	96	16	8	6000	142	30
100	9798-15100	1500	750	6650	187	96	16	8	7400	146	32
105	9798-15105	1575	788	6972	198	96	(2) 12	10	7550	156	23
110	9798-15110	1650	825	7259	206	96	(2) 12	10	7700	174	24
115	9798-15115	1725	863	7547	214	96	(2) 12	10	7850	192	26
120	9798-15120	1800	900	7834	222	96	(2) 12	10	8000	210	27
125	9798-15125	1875	938	8158	231	96	(2) 12	10	8490	228	28
130	9798-15130	1950	975	8481	240	96	(2) 14	10	8790	846	30
140	9798-15140	2100	1050	9128	258	96	(2) 14	10	9100	282	34

Larger sizes available upon request



Entrapment-Safe Main Drain Sump and Cover Assembly

Paddock Pool Equipment Company (PPEC) is your number one provider for solutions to the ANSI/APSP/ICC-16 2017 (VGBA). Paddock's stainless steel Main Drain Sumps and Covers are more expensive than the plastic and fiberglass options offered by competitors, but they will last the life of the facility with proper care and maintenance and not need to be cut out and replaced with code changes.

Features & Benefits

- All models are NSF® listed, for lifetime use
- Type 304L stainless steel construction
- All suction outlet fitting includes anti-vortex reduction device, as required

Options

- Type 316L stainless steel construction
STANDARD MODELS AVAILABLE
- 1818 ESMD with 6" Connection, Relief Valve, 2424 PCFC
- 1818 ESMD with 8" Connection, Relief Valve, 2424 PCFC
- 2424 ESMD with 8" Connection, Relief Valve, 2424PCFC
- 2424 ESMD with 10" Connection, Relief Valve, 2424 PCFC
- 2448 ESMD with 12" Connection, Relief Valve, 2448 PCFC
- 2448 ESMD with (2) 12" Connections, Relief Valve, 2448 PCFC
- 2448 ESMD with 14" Connection, Relief Valve, 2448 PCFC



Modular Deck Drain Systems

Our perimeter deck drain systems with straight and radius sections, remove standing water from around the pool area making a safer area for patrons while separating waste water from the pool.

MODULAR DECK DRAIN SYSTEM

Paddock's Modular Deck Drain is a factory fabricated stainless steel drainage channel with slip-resistant (HDPE) grating.

Features & Benefits

- Our 4" standard Deck Drain is made from Type 304L Stainless Steel
- A 2" coupling is provided for drainage
- Grating is easily removable for maintenance
- Radius sections are available to match your free form design
- Easily integrates with the Paddock Evacuator® system



DECK DRAIN + EVACUATOR® SYSTEM

Paddock's Deck Drain + Evacuator® has features of a Deck Drain system coupled with the Evacuator® Plenum which removes high concentrations of airborne chloramines near the pool area.

Features & Benefits

- Provides a more desirable indoor air quality environment for patrons, swimmers, and staff
- Reduces maintenance in your natatorium and facility
- Extends the life of HVAC systems, scoreboards, building components, and equipment
- May earn points toward LEED certification



Indoor Air Quality (IAQ) is a problem that has plagued indoor swimming pools and chemical and pump rooms for decades. Paddock's source-capture Evacuator[®] Technology, along with a properly designed mechanical system, is the indoor air quality solution for creating a safer, healthier environment for swimmers, patrons, and staff.

Evacuator[®] Technology is designed to minimize airborne nitrogen trichloride (trichloramines) and other disinfectant by-products by capturing and exhausting these off-gassing fumes at its source - the pool's surface. These gasses are heavier than air, sitting just above the water's surface creating a "chloramine bubble." Once removed, fresh conditioned air is able to reach the breathing zone making indoor pools a safer, healthier, and more desirable place to be for everyone.

Features & Benefits

- New and Retrofit Solutions Available
- Engineered system
- Over 400 installations
- Improves IAQ immediately
- Patented Technology
- Chemical & Pump Rooms

Let's Clear the Air of Harmful Chemicals with



BENCH- PVC



DECK DRAIN



WALL-MOUNT



PERIMETER GUTTER



CHEMICAL &
PUMP ROOM

Chemical & Pump Room

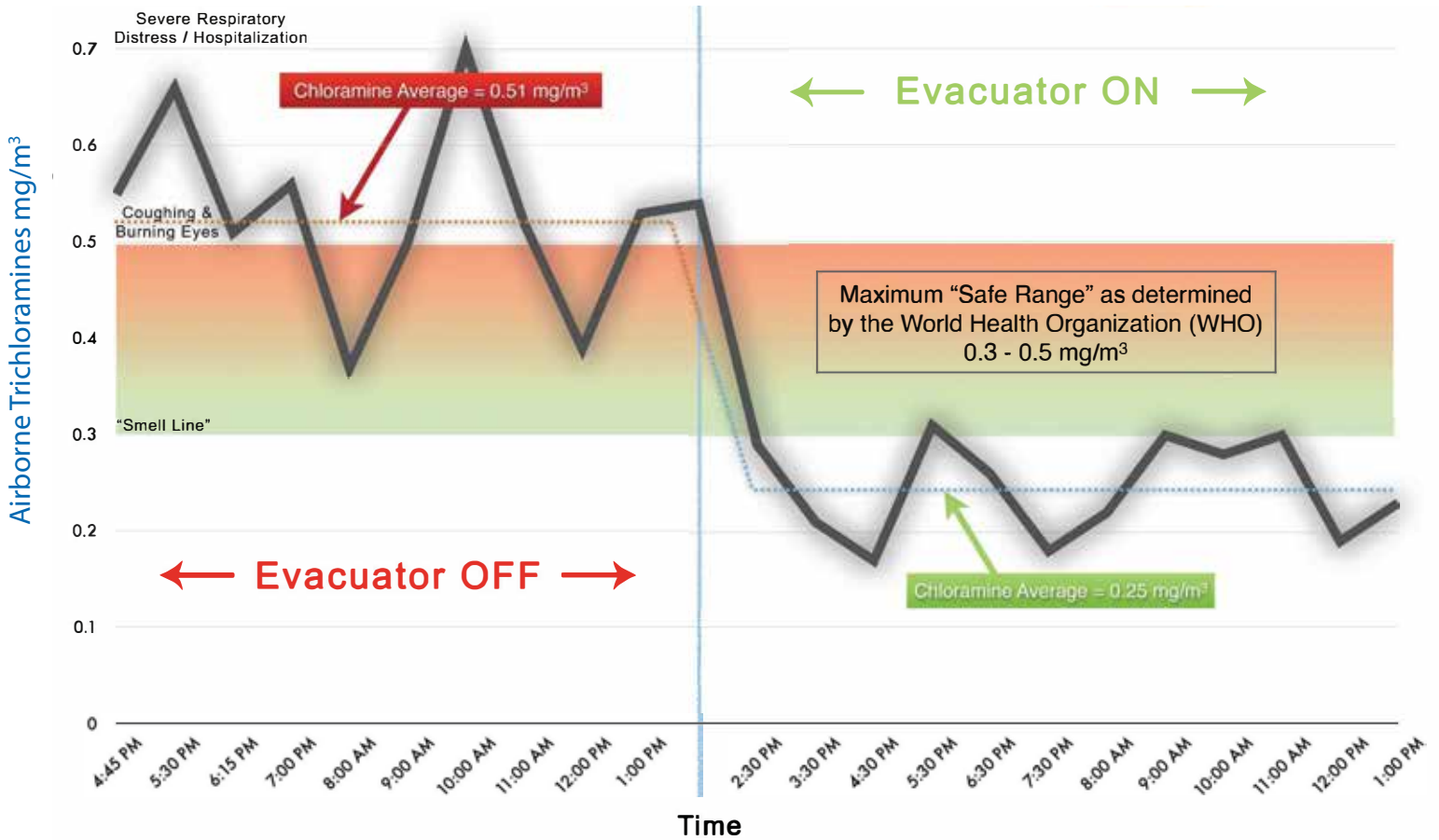
Paddock Pool Equipment Company's Chemical & Pump Room Evacuator[®](CPRE) is a one size fits all solution for poorly ventilated chemical and pump rooms. The compact design allows for simple installation, requiring only a 120V GFCI-protected outlet and exhaust vent opening.

Chemical and pump rooms are typically hot, humid, and corrosive environments as a result of poor airflow and the presence of chemicals, motors, and pool equipment. The CPRE is your plug-and-play solution by creating a cross-ventilation airflow while source-capturing and exhausting corrosive chemical fumes. The CPRE is also perfect for submersed pump pits, pulling the heavy corrosive air away from pumps and strainers.

Features & Benefits

- Durable powder coated 304L stainless steel frame.
- Custom backward curved exhaust fan
 - Epoxy coated for superior corrosion resistance
 - Sealed ceramic bearings
 - 1,000 cfm exhaust volume
- Requires 120v GFCI-protected outlet
- Multiple exhaust Options





Nitrogen Trichloride (NCL3) Test at a Local YMCA

In a controlled test at a Charlotte, NC area YMCA, the Paddock Evacuator® System successfully reduced the airborne trichloramine levels around the pool from unacceptable levels as recommended by the World Health Organization (WHO) to acceptable levels.

- Testing was conducted in a controlled environment at an indoor pool known to have poor indoor air quality (IAQ).
- Gas phase sampling and analysis was conducted by noted University PhD candidates under the guidance of a respected environmental engineering professor.
- The Evacuator® System was designed by Paddock Pool Equipment Company and installed by Paddock Construction Company.
- Evacuator® Technology is patented with additional patents pending.
- This test was conducted and closely controlled at a known facility. Future test results from comparable studies may vary due to individual facility design and uncontrolled variables.

Offset Strainer

Paddocks strainer is rich with features making it the best on the market. Fabricated from Type 304L stainless steel construction of both strainer and basket ensure it will be protecting your filtration system for years to come.

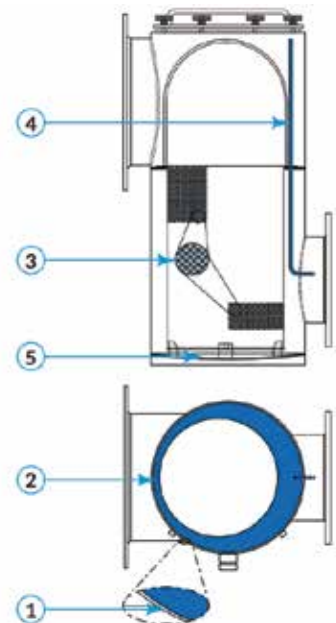
Paddock's strainers are designed for superior flow and less pressure drop by offsetting the strainer basket. This feature allows for larger volumes of effluent water to the pump even under heavy basket loading from debris.

Features & Benefits

- Machined lids to eliminate sharp edges and 1/2" stainless steel cover ring with clear view port
- Sealed with 1/4" diameter rubber O-ring gasket
- Locking assemblies permit easy access and closing without use of tools
- Stainless steel drain and vacuum couplings with threaded plugs
- Threaded pipe gauge connections
- System designed for 60 PSI working pressure
- Extra strainer basket is included



- 1 Stainless steel construction, type 304, 1/8" material thickness
- 2 Offset strainer basket design
- 3 Perforated basket is constructed of 18-gauge stainless steel type 304 with a 52% open area and 1/8" diameter perforated holes
- 4 An internal air bleed tube removes air build up without an external air relief
- 5 Domed bottom dissipates water hammer more effectively, decreasing the force of impact on other components



Offset Strainer

STR-304-OS-04-03

/
/
|
\
\
 Strainer Material Offset Inlet Outlet

PN #'s	Strainer Size	Inlet Size	Outlet Size	Open Area (in ²)	Ratio	Ratio (lbs.)
STR-304-OS-04-03	4X3	4"	3"	11.5 IN ²	20.6:1	191.3
STR-304-OS-04-04	4X4	4"	4"	11.5 IN ²	20.6:1	191.7
STR-304-OS-06-03	6X3	6"	3"	26.07 IN ²	9.16:1	192.5
STR-304-OS-06-04	6X4	6"	4"	26.07 IN ²	9.16:1	193.0
STR-304-OS-06-05	6X5	6"	5"	26.07 IN ²	9.16:1	193.07
STR-304-OS-06-06	6X6	6"	6"	26.07 IN ²	9.16:1	194.2
STR-304-OS-08-04	8X4	8"	4"	45.7 IN ²	5.22:1	194.3
STR-304-OS-08-05	8X5	8"	5"	45.7 IN ²	5.22:1	195.1
STR-304-OS-08-06	8X6	8"	6"	45.7 IN ²	5.22:1	195.6
STR-304-OS-08-08	8X8	8"	8"	45.7 IN ²	5.22:1	496.9
STR-304-OS-10-05	10X5	10"	5"	71.8 IN ²	5.66:1	299.4
STR-304-OS-10-06	10X6	10"	6"	71.8 IN ²	5.66:1	299.9
STR-304-OS-10-08	10X8	10"	8"	71.8 IN ²	5.66:1	301.2
STR-304-OS-10-10	10X10	10"	10"	71.8 IN ²	5.66:1	303.0
STR-304-OS-12-05	12X5	12"	5"	101.64 IN ²	4:01	309.5
STR-304-OS-12-06	12X6	12"	6"	101.64 IN ²	4:01	310.0
STR-304-OS-12-08	12X8	12"	8"	101.64 IN ²	4:01	311.4
STR-304-OS-12-10	12X10	12"	10"	101.64 IN ²	4:01	313.2
STR-304-OS-12-12	12X12	12"	12"	101.64 IN ²	4:01	315.0
STR-304-OS-14-08	14X8	14"	8"	122.7 IN ²	5.24:1	307.2
STR-304-OS-14-10	14X10	14"	10"	122.7 IN ²	5.24:1	309.0
STR-304-OS-14-12	14X12	14"	12"	122.7 IN ²	5.24:1	310.8
STR-304-OS-14-14	14X14	14"	14"	122.7 IN ²	5.24:1	315.0
STR-304-OS-16-08	16X8	16"	8"	160.92 IN ²	4:01	309.0
STR-304-OS-16-10	16X10	16"	10"	160.92 IN ²	4:01	310.8
STR-304-OS-16-12	16X12	16"	12"	160.92 IN ²	4:01	312.6
STR-304-OS-16-14	16X14	16"	14"	160.92 IN ²	4:01	316.8
STR-304-OS-16-16	16X16	16"	16"	160.92 IN ²	4:01	318.6



Starting Platforms

Paddock's starting platforms all feature a sturdy dual post stainless steel frame with a solid slip-resistant top. Built to meet FINA, NCAA, USMS, NFSHSA, and USA Swimming rules.

Our line up of Starting Platforms are created for all levels of swimming, from elite competitors to those just learning the sport of competitive swimming. All models, i.e., FastTrack, Track Start, and EZ Set II use the same anchorage, making upgrading platforms simple.

Features & Benefits

- Available in Type 304L or Type 316L Stainless Steel
- Quickly and easily removable
- Lane numbers visible from all sides
- Backstroke starting bar flush with front edge of platform
- Slip-resistant/Non-Skid black surfaces on platform, wedge, & step
- Anchor assemblies with 19" spacing

Options

- Custom colors & logos available for Non-Skid
- Loose anchors for retro installation
- Powder Coating available

4912 FAST TRACK

- Sturdy side rails with grips
- Adjustable spring loaded locking nut secures wedge to side rails
- 15 adjustable wedge locations to fit any swimmer's preferences
- Wedge easily adjusts with single-hand operation and is removable
- Platform is 24" wide x 32" long



4912 Fast Track



Starting Platforms

Our TrackStart and EZ Set II starting platforms are created for all levels of swimming.

Features & Benefits

- Available in Type 304L or Type 316L Stainless Steel
- Quickly and easily removable
- Lane numbers visible from all sides
- Backstroke starting bar flush with front edge of platform
- Slip-resistant surfaces on platform & step
- Anchor assemblies with 19" spacing

Optional Features

- Fully customizable tops including colors & logos
- Loose anchors for retro installation
- Powder Coating available
- Vertical backstroke grips are available

4911S Track Start

- Side-mounted step
- Platform is 24" wide x 32" long
- Long reach available: 24", 30", or 36" setback
 - 10" anchor assemblies, required for long reach setback

4909S EZ Set II

- Rear-mounted step
- Top is 20" wide x 21-1/4" long



4911S Track Start

4909S EZ Set II



Ladders

Paddock's Ladders are fabricated from stainless steel tubing and with standard wall thickness. The ladders are spaced apart with a slip-resistant stainless steel tread and a cross brace for added stability.

Features & Benefits

- Ladders are fabricated from stainless steel tubing with an outside diameter of 1.90" and standard wall thickness of .083"
- Ladder rails are spaced 19" apart with a cross brace 24" standard (center to center) for added stability and furnished with slip-resistant stainless steel treads
- Exposed surfaces shall be polished to a Paddock buff finish
- A rubber bumper on each rail protects the interior pool finish
- Ladder sizes are 2-Tread, 3-Tread, 4-Tread and 5-Tread
- Fabricated from Type 304L or 316L stainless steel

Options

Outside diameter of 1.5" available

- Other wall thickness available (.120")
- Wider cross brace 30" (center to center) for wider gutter
- Paddock deck anchors and escutcheon plates
- Powder Coating is available



Grab Rails

Paddock Pretzel Bend, California Style and Figure Four Grab Rails are fabricated from stainless steel tubing and standard wall thickness. The grab rails come as a pair with optional bends, depending on your project.

Features & Benefits

- Paddock's grab rails have a stainless steel tubing with an standard outside diameter of 1.90" and standard wall thickness of .083"
- Grab rails are 33" from the deck to top of rail and 22" center to center between rails
- Available in Type 304L or 316L stainless steel
- Legs are mounted to allow maximum walking space on the pool deck
- Exposed surfaces are a highly polished Paddock buff finish

PRETZEL BEND GRAB RAILS

Paddock's Pretzel Bend Grab Rails are 17" from edge of pool to center of the back post. They are used with our standard gutter when the pool deck is narrow.

- Legs are mounted side by side for maximum deck space

CALIFORNIA STYLE GRAB RAIL

Paddock's California Style Grab Rails are made in the same design as the Pretzel Bend Grab Rails with an additional 9" to accommodate pools with very wide gutters and/or unusually extreme deck-to-water dimensions.

- Legs are mounted side by side for maximum deck space

FIGURE FOUR GRAB RAILS

Paddock's Figure Four Grab Rails are from edge of the pool 28" center to center of the post and includes the 8" center to center spacing between the anchors. This accommodates very wide gutters and/or unusually extreme deck to water dimensions.

- Legs are mounted in-line on the deck



Pretzel Bend



California Style



Figure Four



Movable Lifeguard Chairs, Stations & Observation Platforms

Paddock manufactures several types of stainless steel movable lifeguard chairs, platforms and stations to provide the perfect view for any pool deck, indoor or outdoor.

Features & Benefits

- Each one has a stainless steel frame with molded fiberglass swivel seat
- The rigid 19" wide slip-resistant high density polyethylene (HDPE) platform is reached via a 15-degree sloping ladders with 19" long x 4" wide stainless steel with slip-resistant treads
- Rubber bumpers protect the deck when the chair is in place
- Wheels secured to the frame allow for easy positioning at various poolside locations
- An umbrella socket on one side behind the seat is an integral part of the chair frame
- There is a "J" hook on each rear upright for the Life Ring & Rope
- Fabricated from Type 304L or 316L stainless steel

OBSERVATION PLATFORM

Seat is 60 inches (5 ft.) above the pool deck with a 36" x 60" slip-resistant HDPE platform

Standard 72 inches (6 ft) above the pool deck with 20" x 8" HDPE platform

Options

- Also, 5 foot and 4 foot above the pool deck

Portable Lifeguard Station 2-1/2 ft. OR 4-1/2 ft.

Both Lifeguard Stations (2-1/2 ft. and 4-1/2 ft.) have a 48" x 48" slip-resistant HDPE platform

- The 2-1/2 ft. molded fiberglass seat is 30 inches above the pool deck
- This 2-1/2 ft. station will step from ground level to platform and enter/exit from front or rear
- The 4-1/2 ft. molded fiberglass seat is 54 inches above the pool deck

Observation Platform



Lifeguard Chair



Lifeguard Station



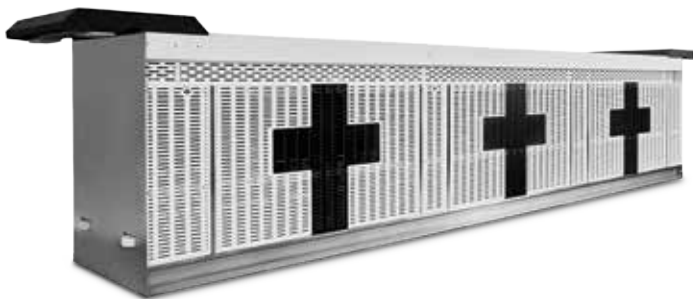
HDPE Replacement Grating

Paddock's High-Density Polyethylene (HDPE) grating is a marine grade polymer that is highly durable and will give years of service in your pool environment.

This product is used with our gutters, bulkheads, deck drains, deck equipment, etc.

Features & Benefits

- Machined slots allow fast flow of water through grating
- Textured slip-resistant finish provides a non-skid surface
- Low maintenance, easy to clean and eliminates need for repairs
- Will not crack, delaminate, swell or absorb water
- UV stabilized for harsh sun and tough aquatic environments
- Does not react with pool chemicals
- Options for inlaid depth markers are available, eliminating tile depth markers
- Designed to fit most radius gutters or hard to configure corners
- Standard color is gray or white (Gray is recommended for indoor pools only).



Movable Bulkhead

Paddock's Movable Bulkhead is the simplest and most cost-effective way to maximize the efficient use of any aquatic facility. It is designed and manufactured to meet NCAA, USA Swimming, and FINA requirements. Paddock has been manufacturing movable bulkheads since 1971, with hundreds of installations nationwide.

Having a movable bulkhead provides the ultimate flexibility for various course lengths, areas for training and competitions. Making it the perfect Bulkhead to include with your Paddock Gutter System.

Features & Benefits

- Type 304L internal stainless steel construction
- Variable length and width
- Wave quelling flow-through HDPE non-skid grating
- Designed with airflow through design making it perfect to include a Paddock Evacuator® System.
- Integrated variable buoyancy chamber for ease of movement by two people
- Continuous handhold and toe ledge
- Provisions for timing systems, including a continuous timing chase
- Racing line anchors and targets
- Backstroke and recall stanchion anchors
- Removeable end safety rails
- Minimal exposed stainless steel above waterline

Options

- Type 316L internal stainless steel construction
- Additional backstroke and recall stanchion anchors
- Combination of Type 304L below water, and Type 316L above water line construction
- Starting platform anchors
- Additional racing line anchors
- Customization available



Rev 09/2023



PADDOCK

POOL EQUIPMENT COMPANY
EMPLOYEE OWNED SINCE 2019

www.PaddockIndustries.com

info@PaddockIndustries.com

(803) 324-1111

Follow us on social media:



@PaddockPools



Paddock Pool Equipment Company



@PaddockPoolCo



Paddock Pool Equipment Co