

Preston & Barbieri



JOIN US
2020

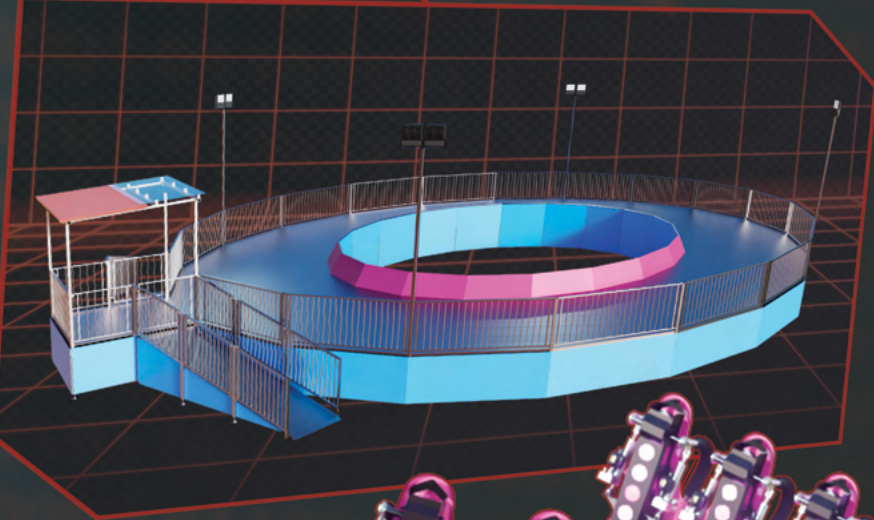
HYPER JUMP

Preston & Barbieri

Preston & Barbieri



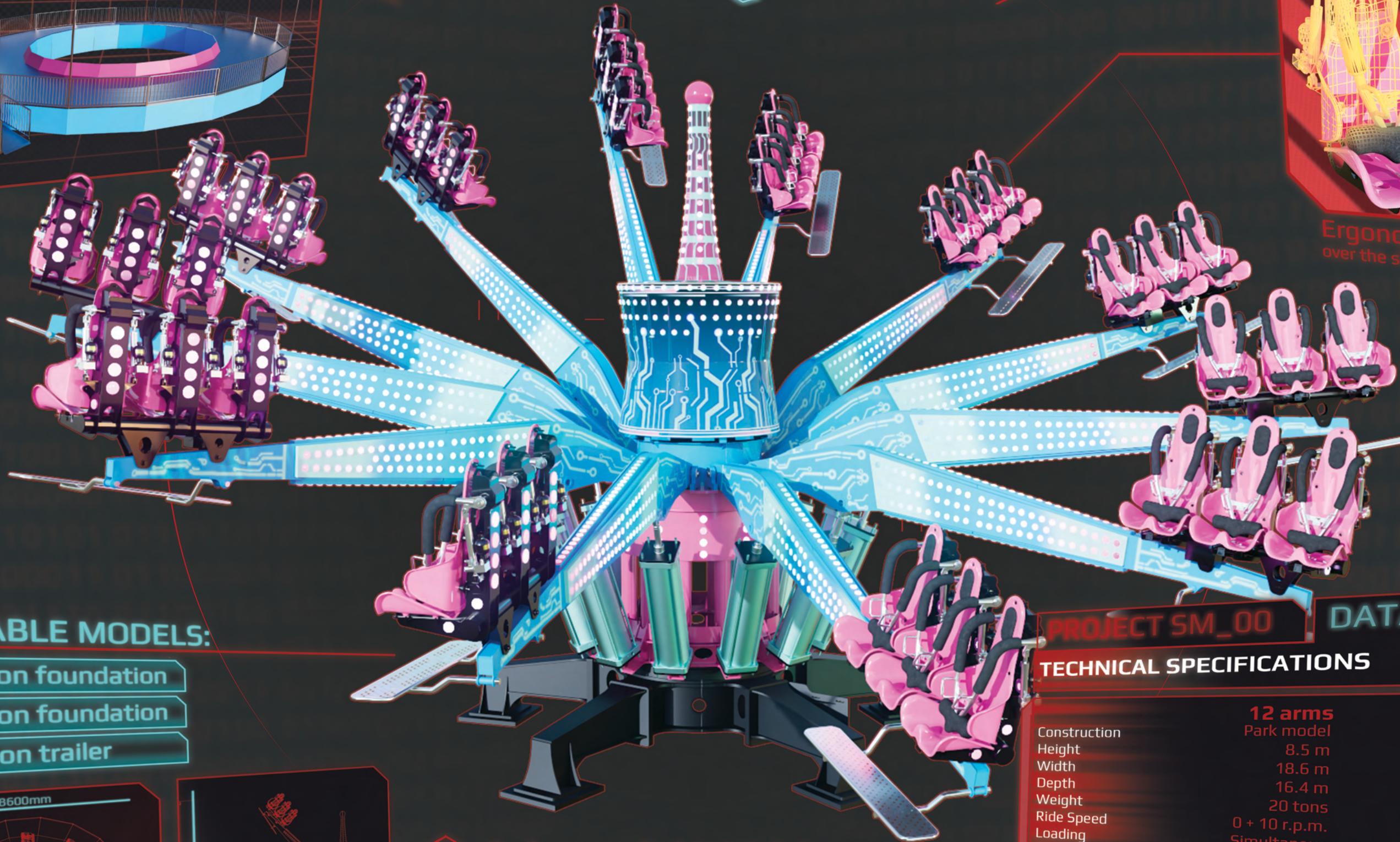
Station



Preston & Barbieri



Ergonomic seat over the shoulder restraint

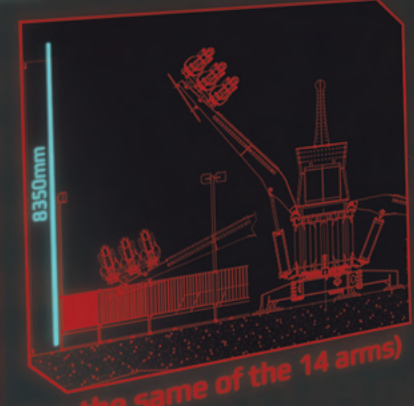


1x

27.4

AVAILABLE MODELS:

- 12 arms on foundation
- 14 arms on foundation
- 14 arms on trailer



12 arms layout (dimensions are the same of the 14 arms)



PROJECT SM_00 DATA TECHNICAL SPECIFICATIONS

	12 arms Park model	14 arms Park model
Construction	Park model	Park model
Height	8.5 m	8.5 m
Width	18.6 m	8.6 m
Depth	16.4 m	16.4 m
Weight	20 tons	22 tons
Ride Speed	0 + 10 r.p.m.	0 + 10 r.p.m.
Loading	Simultaneous	Simultaneous
Number of Seats	12 arms, 3 seats each	14 arms, 3 seats each
Capacity	up to 720 p/h	up to 840 p/h
Drive Power	22 Kw	22 Kw
Light Power	6 Kw	6 Kw
Air compressor and dryer pw.	55x2 Kw	55x2 Kw
Shipping	2x40' OT+ 1x40 box	2x40' OT+ 1x40 box
Set-up Time	10 days	10 days



HYPER JUMP



WWW.PRESTONBARBIERI.COM

PRESTON & BARBIERI Srl • Via Cocchi 19 • 42124 Reggio Emilia • Italy
+39 0522925211
preston@prestonbarbieri.com • barbieri@prestonbarbieri.com