



# COMPANY PROFILE







# SMARTER SOLUTIONS

## Who we are?

MATECH (Materials Technologies for Buildings Co. Ltd)

Matech is an exclusive agent of leading swimming pool French swimming pool company.



### Contracting division:

**MATECH** adopted exclusively the most developed, fastest and smartest installation methods of private and public swimming pools, which was invented and developed by Desjoyaux Company (since 1966).  
<https://www.desjoyaux.com/en/> .

The swimming pool construction method uses special PP panels supplied in different shapes, as per the site requirement besides, it offers a very sophisticated water filtration unit .



**MATECH** offers Renovation of old swimming pools using the best methods and the new technologies, according to Desjoyaux Company.





Before renovation



After renovation

**MATECH** offers other contracting activities such as the supplying and applying of PVC Waterproofing Membranes for the swimming pools and artificial lakes. Insuwrap [www.insuwrap.com](http://www.insuwrap.com) ,produces the special waterproofing products that we use in our waterproofing projects.

**MATECH** also supplies and applies a unique Thermal Insulation Cladding System for the building facades. The system uses a Prefabricated Coated Thermal Insulation Panels, designed, and produced by Saveto [www.saveto.com](http://www.saveto.com) ,with special installation methods and profiles.

## Trading

### Trading division:

**MATECH** imports and trades very high-class finishing accessories items for the mega and the private projects in the kingdom of Saudi Arabia and the Gulf area.

Our Trading items are covering the following groups:

1. Swimming Pools Parts, supplied from Desjoyaux.
2. Ceramic Tiling System Accessories.
3. Plaster Accessories.



# Specialized Contracting Department



1

## DESJOYAUX SWIMMING POOL

Matech is an exclusive agent for the well-known Desjoyaux company. Its success lies in its simple design, craftsmanship production values applied on the industrial scale with infinite possibilities in terms of shape and equipment options.

With over 202,000 projects each year in every corner of the globe. Desjoyaux is now the world's leading in-ground pool supplier.

The components of the Desjoyaux Swimming Pool:



1. Desco Panel



2. Liner (PVC) Interior Finishing



3. Filtration unit

### 1. Desco Panel

- consists of two parts: the smooth front side, 25 cm wide and 120 cm high, that receives the liner and the back face with a trapezoidal section, which complements the mold. It is made of polypropylene which is not affected by soil factors.
- They are assembled, armed, and poured concrete in site.

### 2. Liner (PVC) Interior Finishing

- Isolated with liner, which is made of PVC material and is 1.50 mm thick, reinforced with polyester fibers and is characterized by the following:
  - Mold remedy.
  - UV Resist.
  - Processor to withstand high and low temperatures.
  - Treated to withstand chemicals used in water treatment.
- It has high expansion and shrinkage efficiency (200 times of concrete) and prevents water leakage due to its independence when installing from the concrete structure.



### 3. Filtration unit

- No need to build a pump room or occupy any area of land surrounding the pool.
- No need to extend any of the pipes buried in the ground, thus canceling almost all plumbing work.
- Optimal utilization of pump energy due to its proximity to the pool and the absence of friction losses as a result of the absence of buried tubes as in sand filters and thus increasing the number of times the water circulates through the filter.
- No need to make any holes in the floor and walls of the pool to install the entrances and exits of the water and the drain hole, which in many cases causes cracks in the concrete structure.
- Use tight-pore polyester filter bags that reserve 6 or 15 microns of impurities.
- Save in regular maintenance, as there is no need to use the Back-Wash filter system (reverse wash) and waste amounts of water and treatment materials during each cleaning process.
- These advantages lead to cost savings in the event of a snake or smuggling in the pool body or in buried pipes, as in the traditional system.

## 2

### Saveto Thermal Insulation Panels

MATECH supplies and applies a unique Thermal Insulation Cladding System for the building facades. The system uses a Prefabricated Coated Thermal Insulation Panels, designed, and produced by Saveto [www.saveto.com](http://www.saveto.com), with special installation methods and profiles.

Saveto's Vetotherm Panel is a thermal Insulation Panels (EPS panel facade system) that offers a complete prefabricated range of products for thermal insulating, decorating, and finishing of the facades. Vetotherm Panel is delivered to the site as a pre-coated panels ready to install. Vetotherm Panels are incorporated with a prefabricated design solution that reflects most architectural styles and meets the desired taste. The system is recommended for new constructions as well as renovations where facade aesthetics with high-quality thermal insulation.

MATECH is certified by Saveto to apply Saveto Vetotherm Panel. For more information about the system, visit [www.saveto.com](http://www.saveto.com).

## 3

### Waterproofing Systems

MATECH contractors supply and apply of PVC Waterproofing Membranes for the swimming pools and artificial lakes.

We believe in selecting the highest quality waterproofing membranes in our waterproofing projects. MATECH is certified by Insuwrap [www.insuwrap.com](http://www.insuwrap.com) to apply the following products for swimming pools and artificial lakes projects

Insuwrap PVC LR with any required thickness 750 to 2000 micron.

Insuwrap PVC LR-UV

Insuwrap PVC L

Insuwrap LNT

Insuwrap LNTR

Insuwrap LNTR-UV

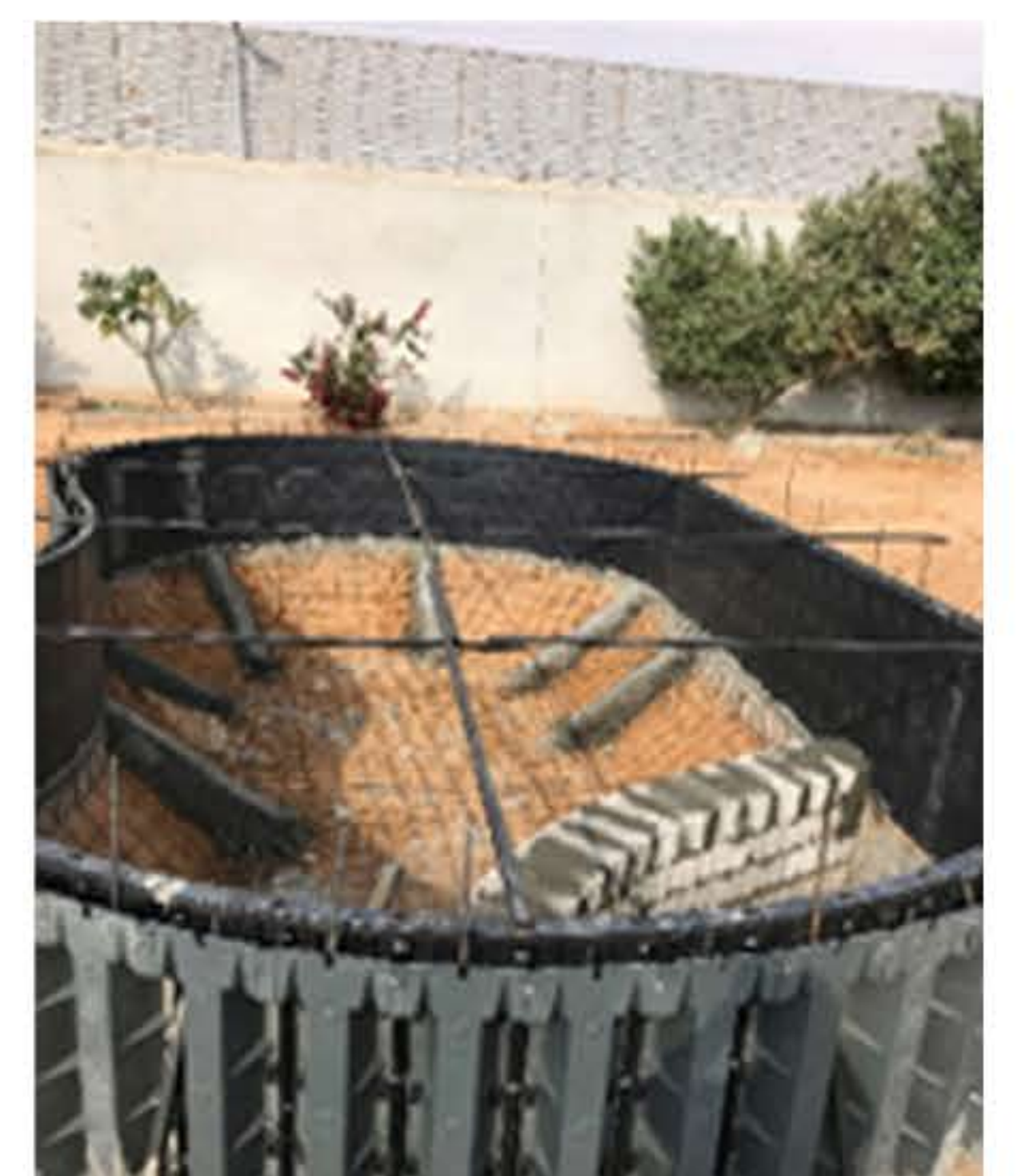




# PROJECT REFERENCES



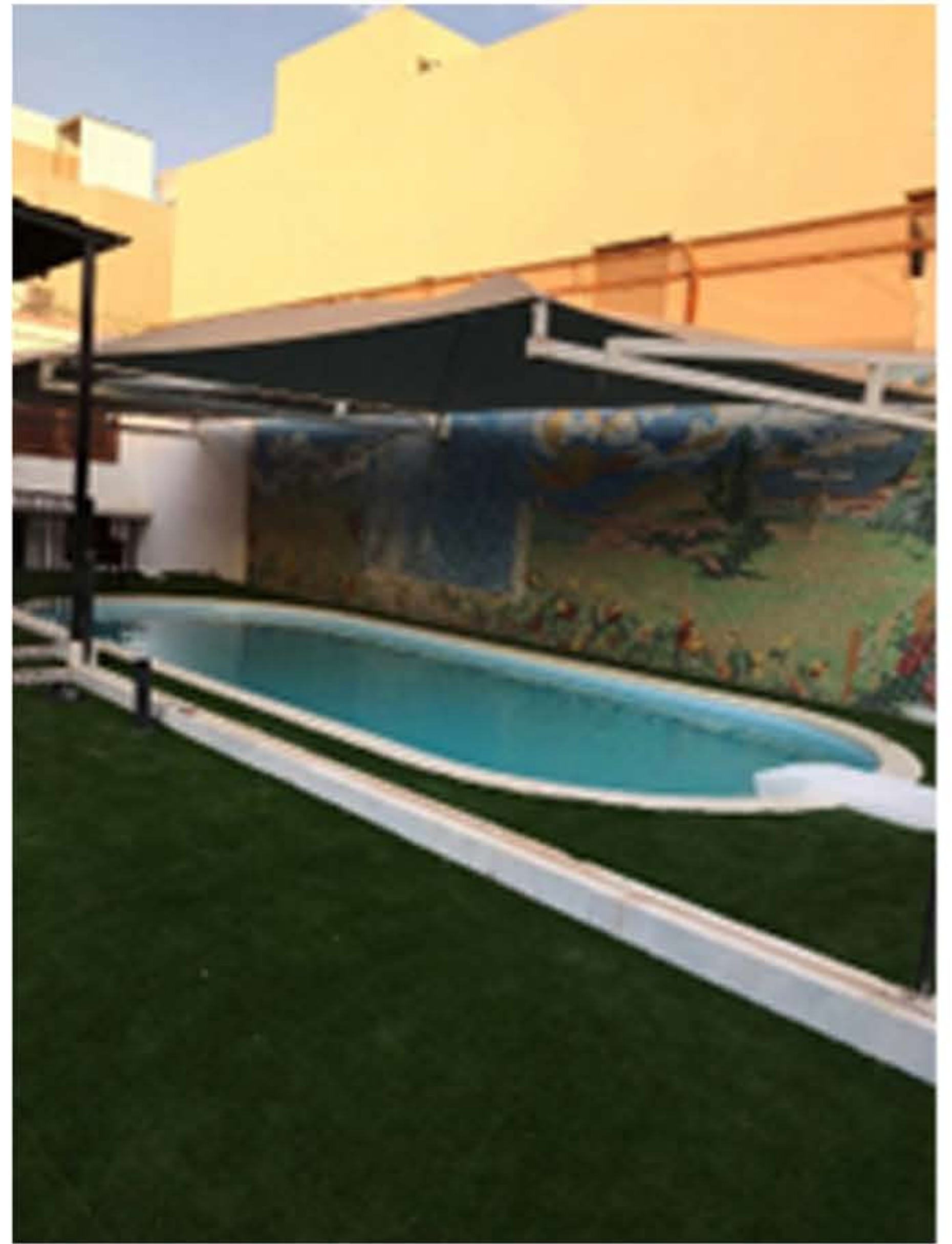
# Central Region





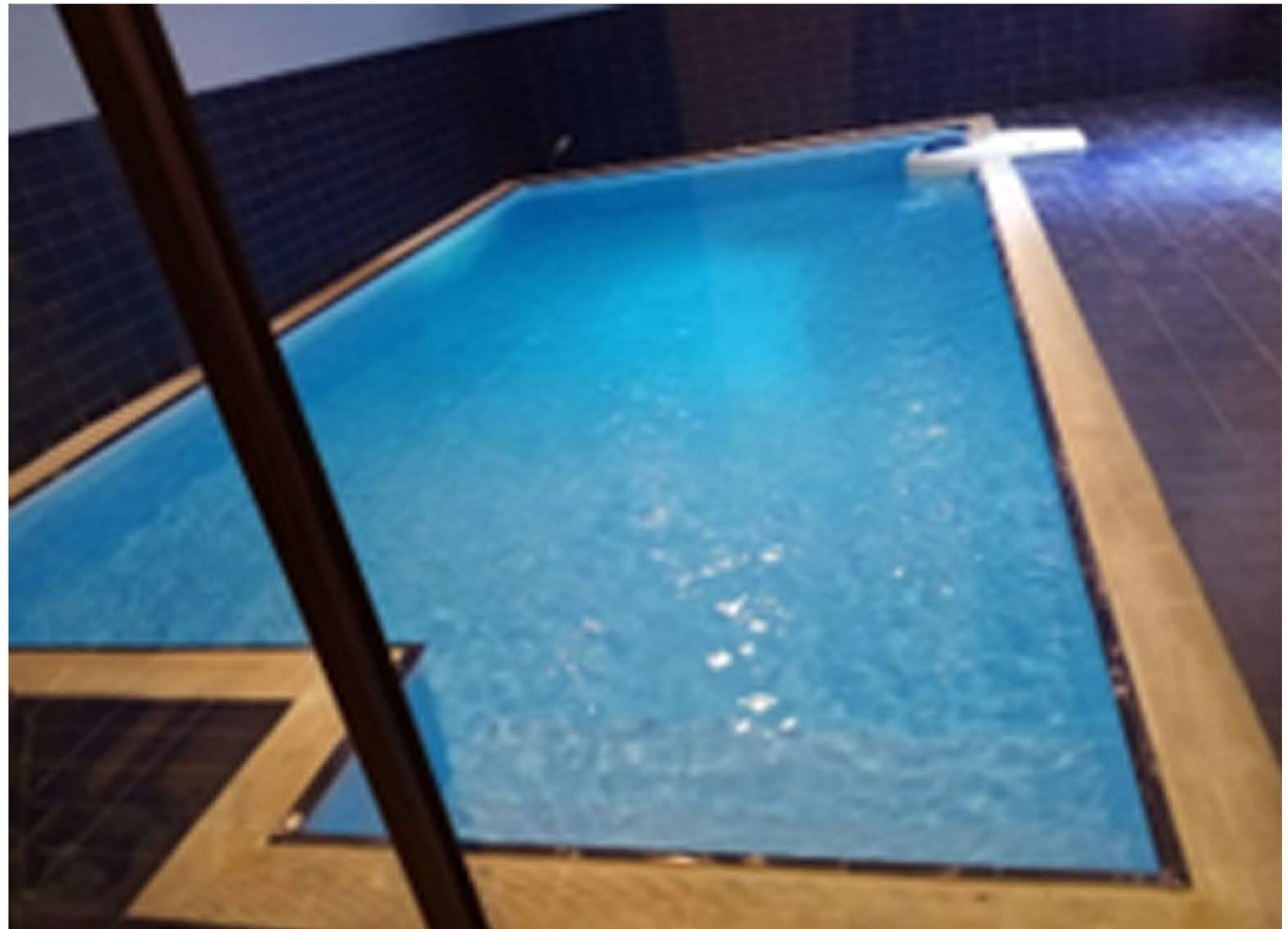








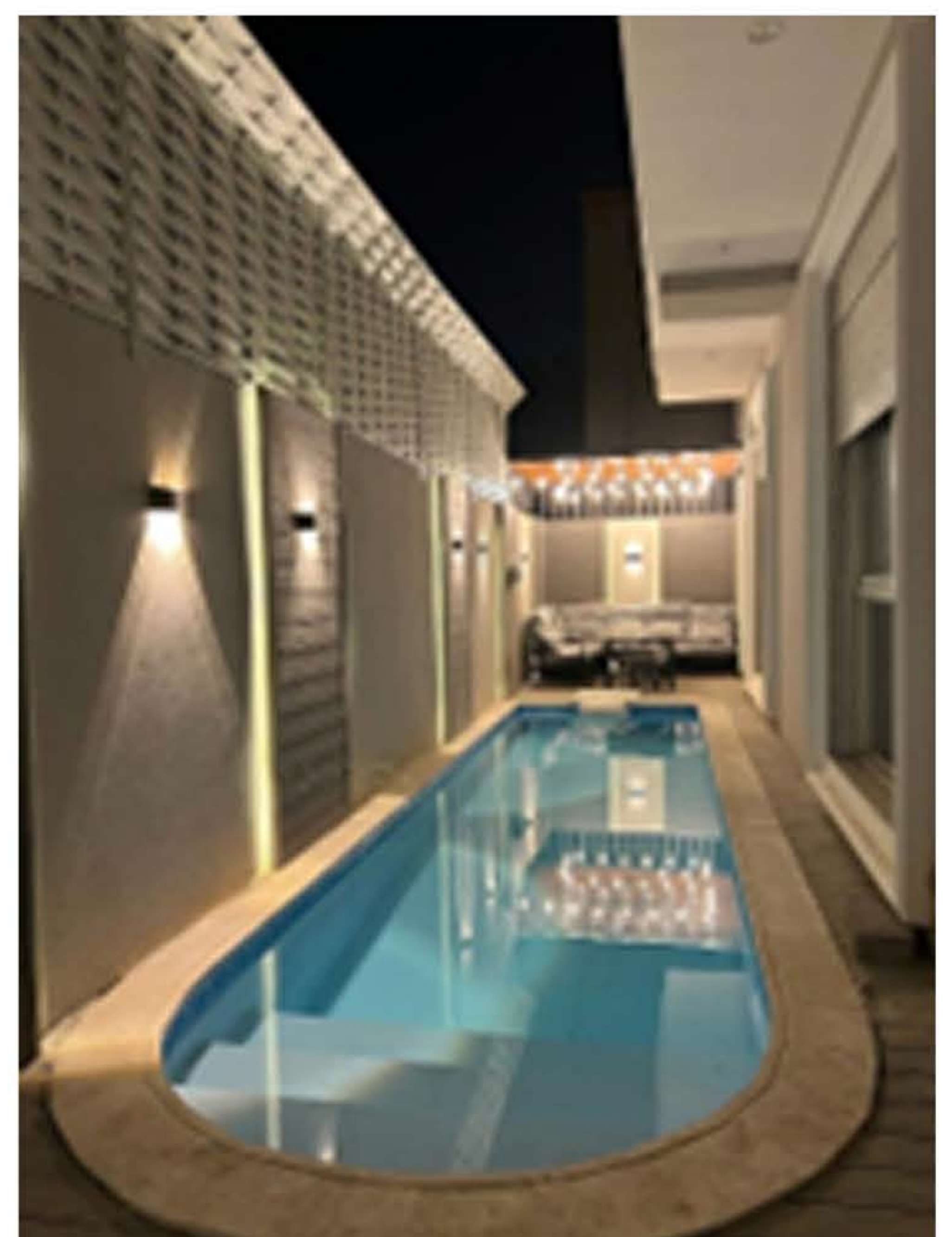
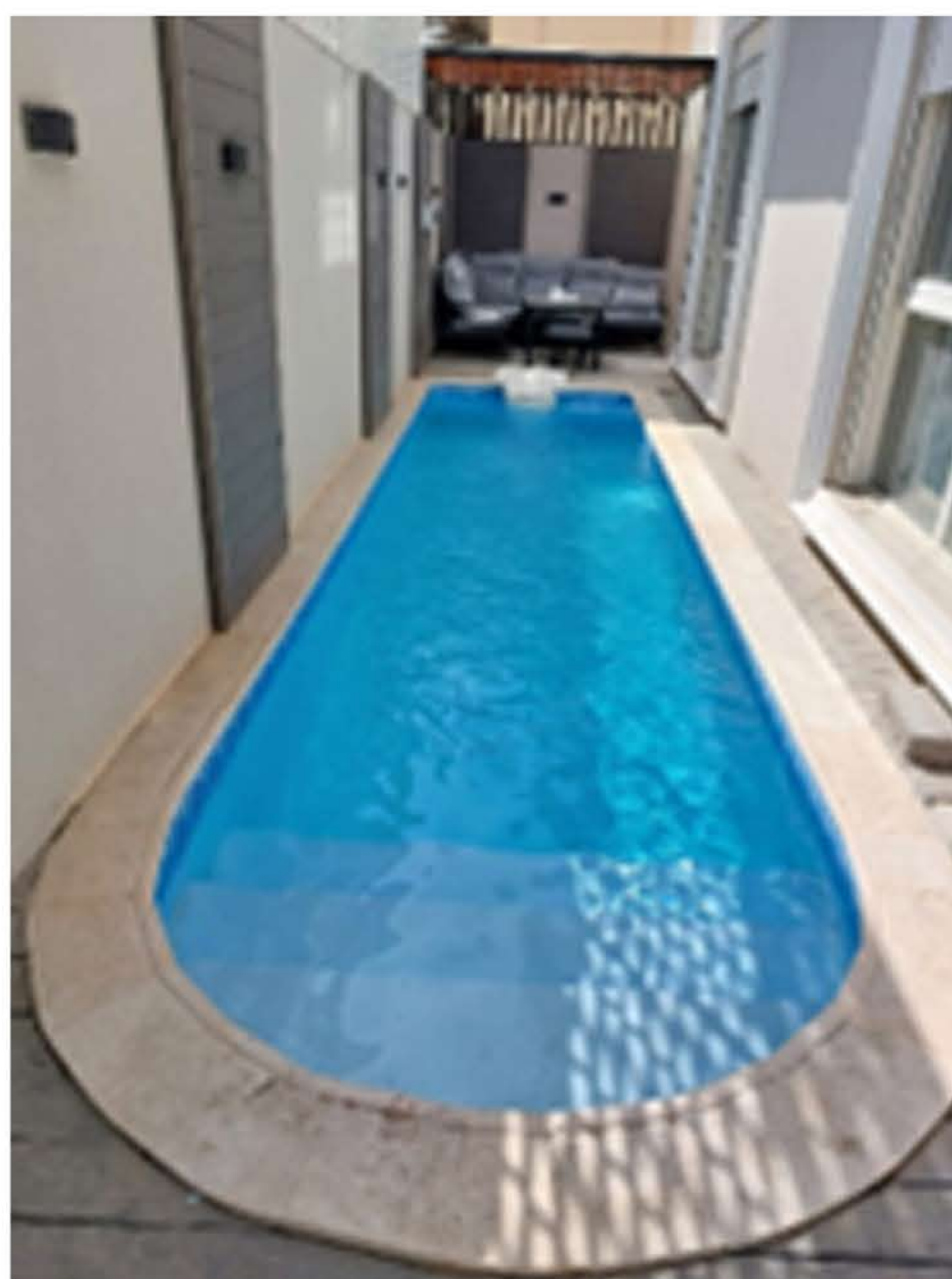
# Eastern Region



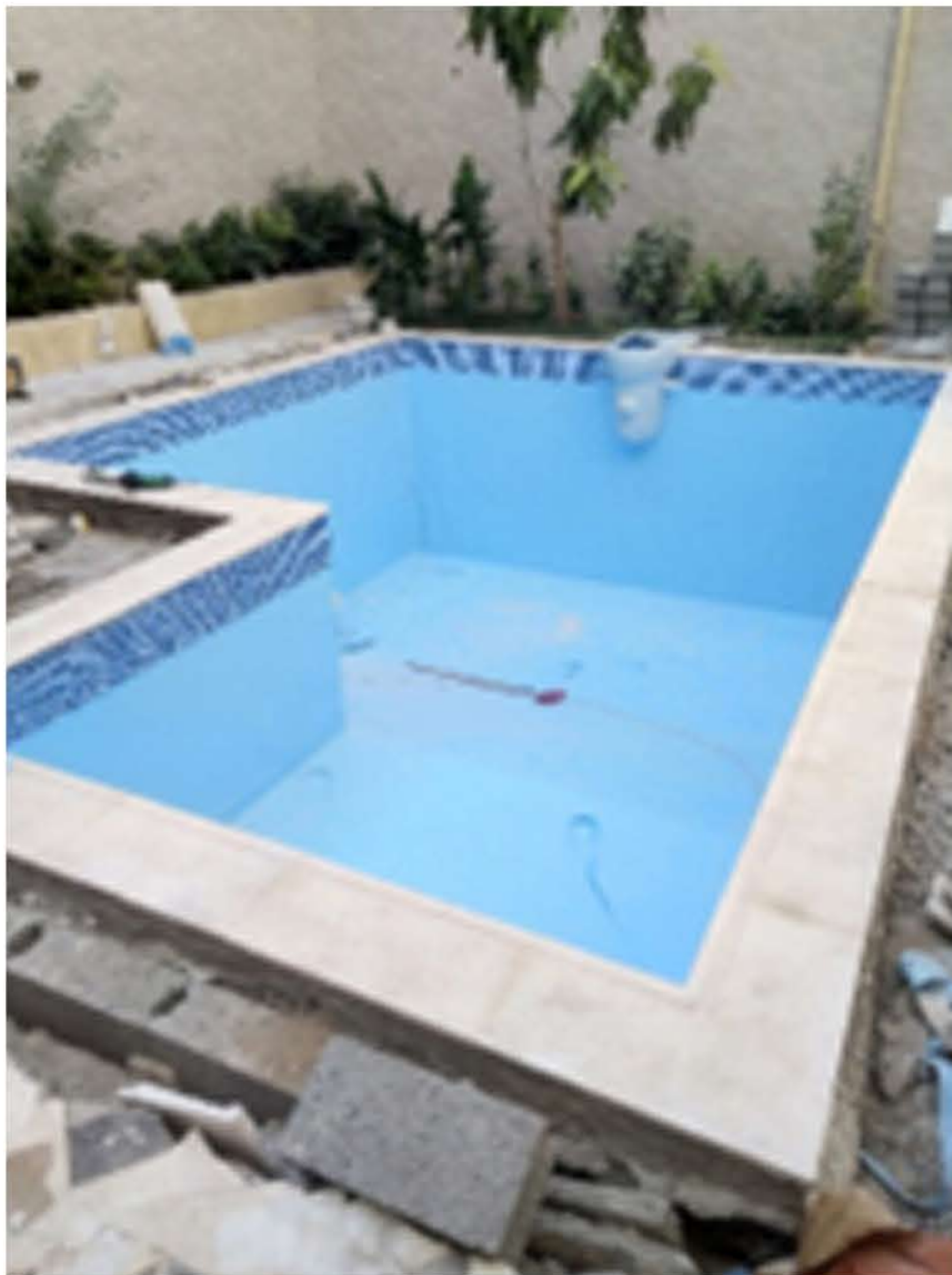
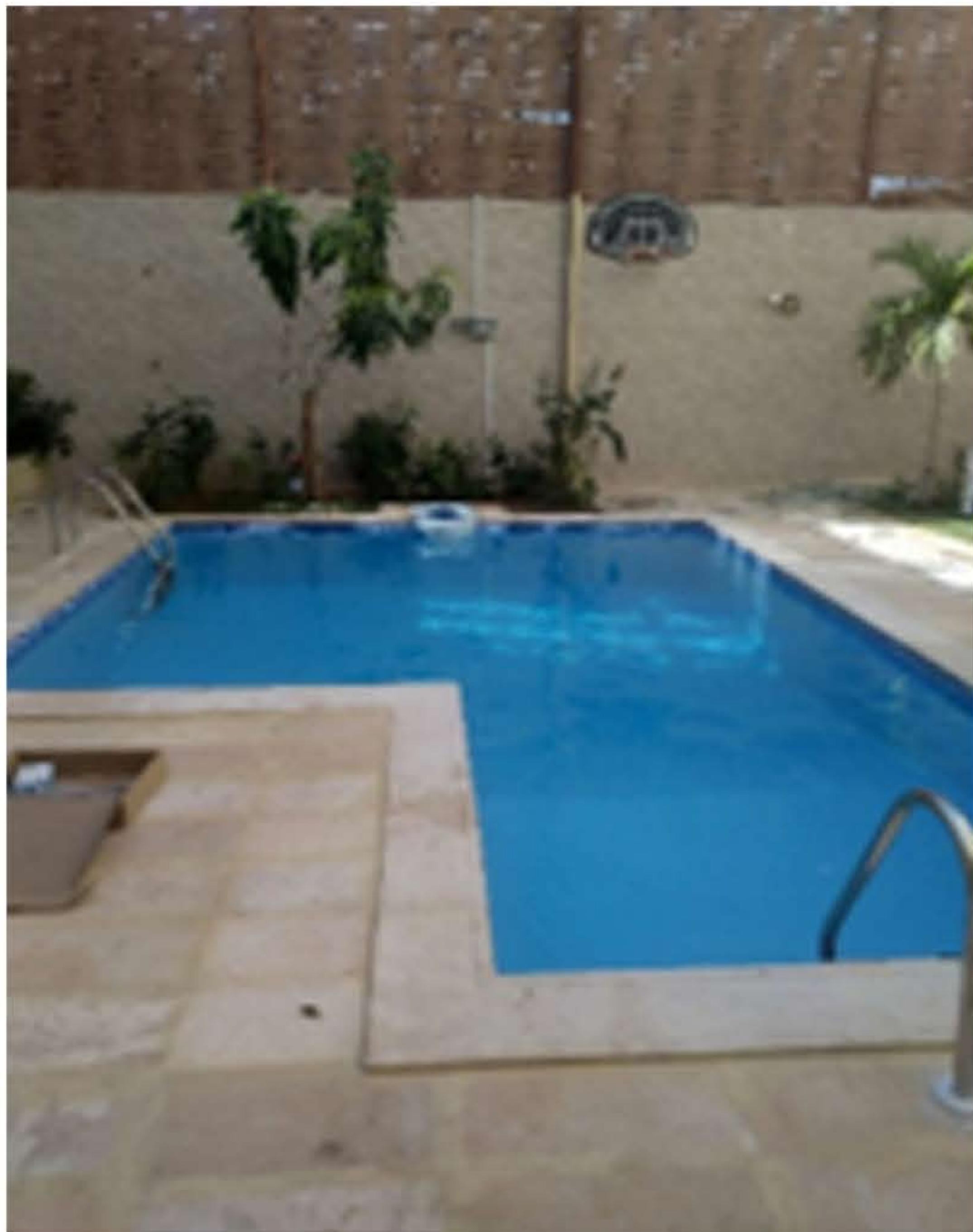




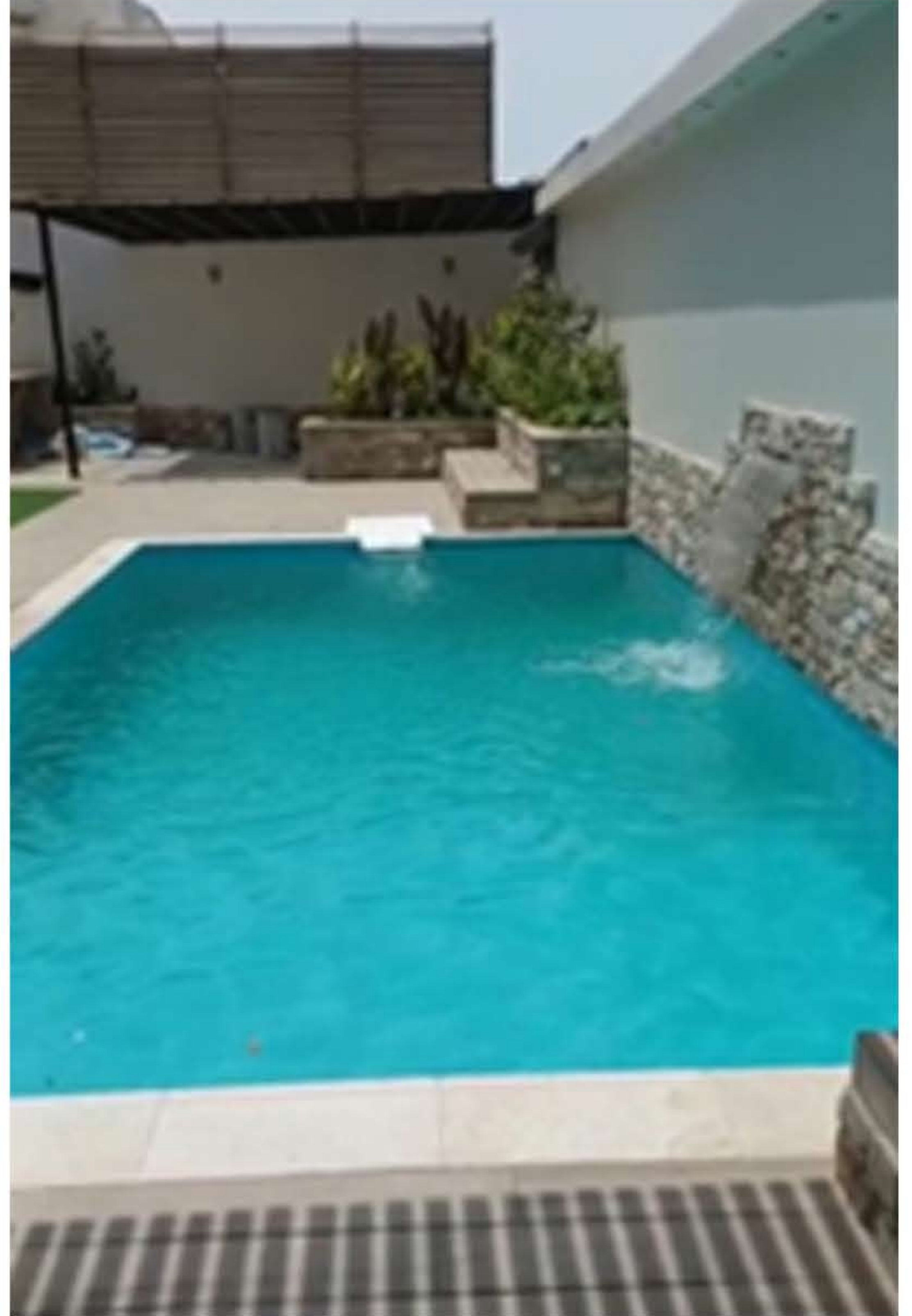
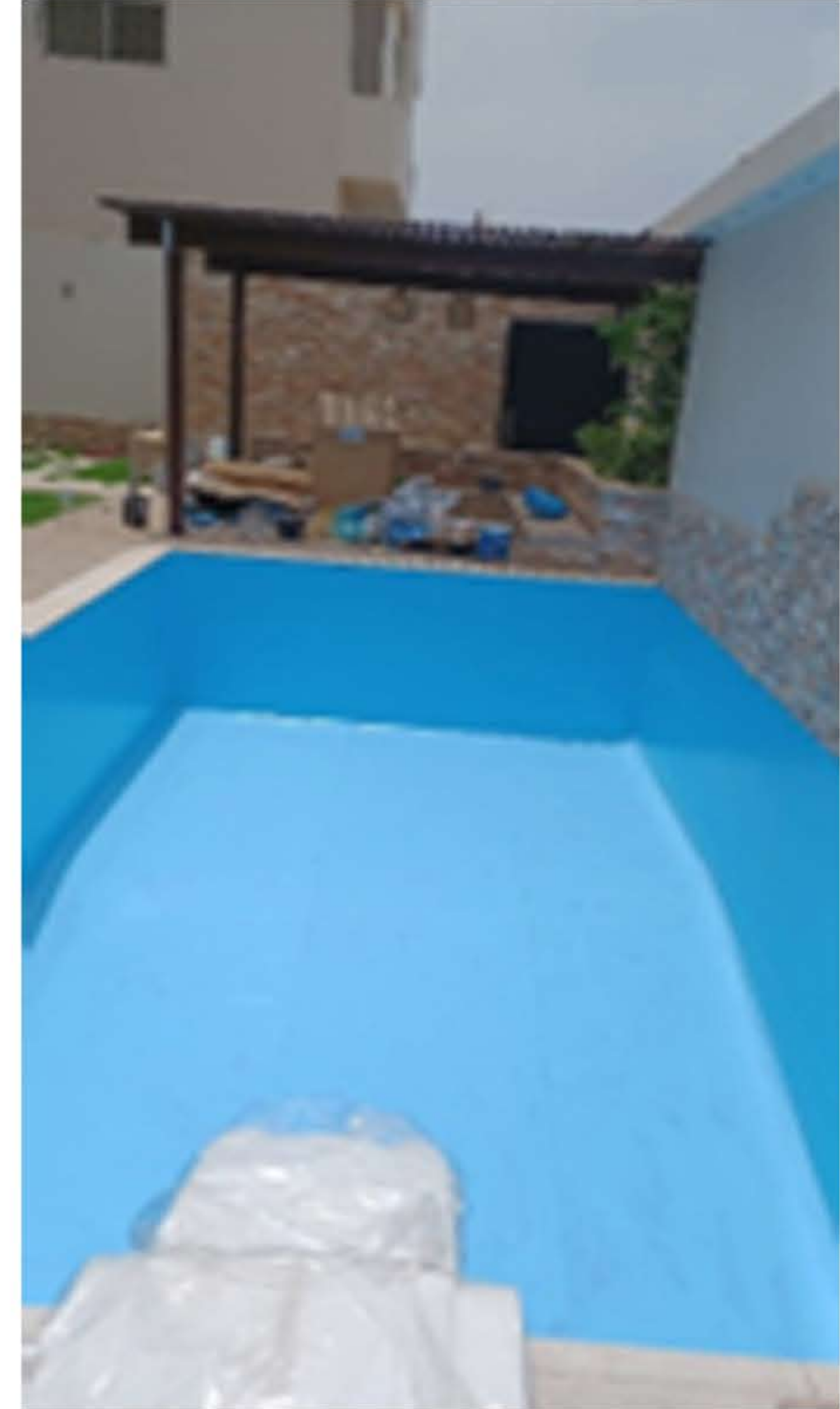
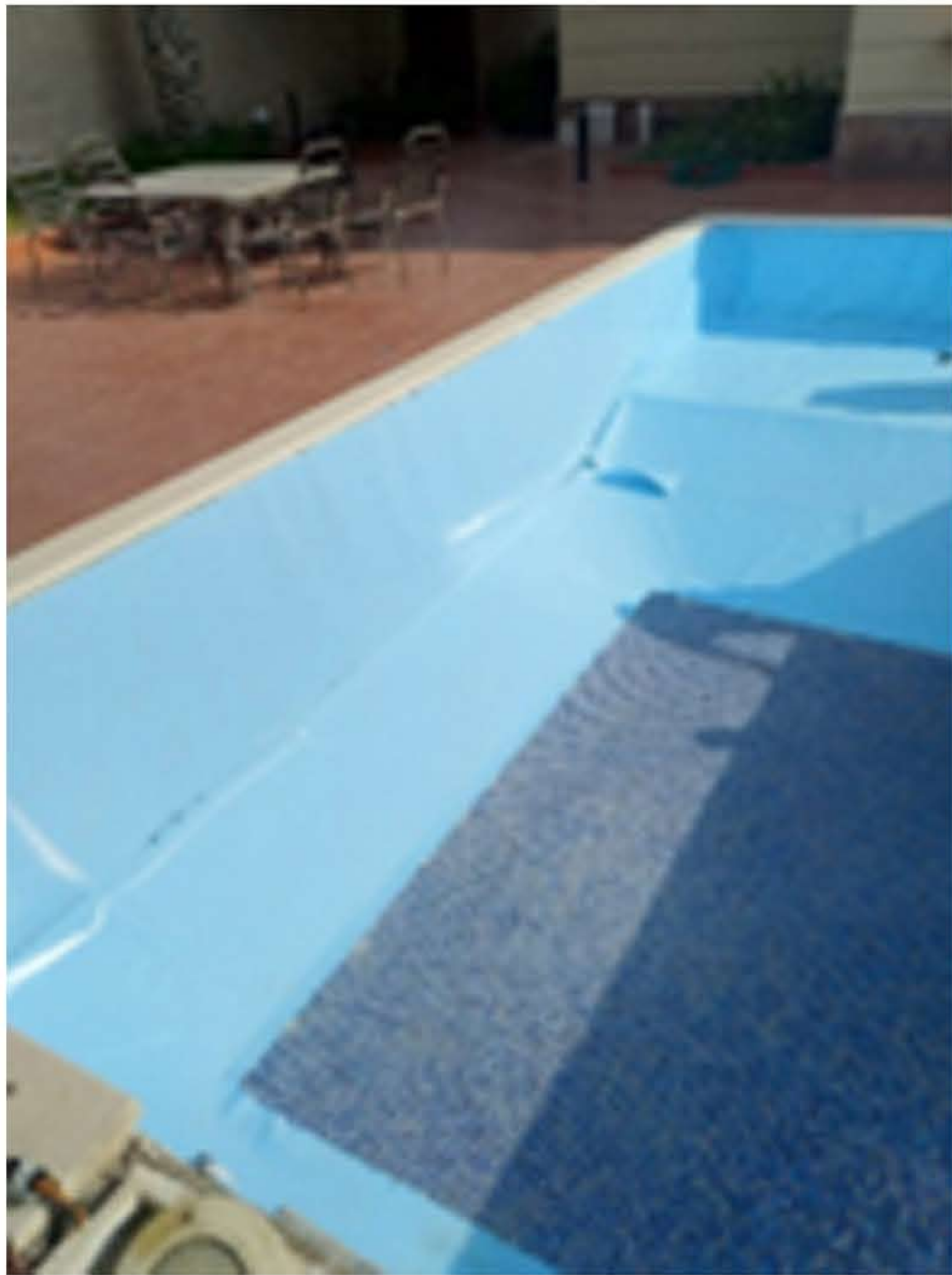
## Western Region



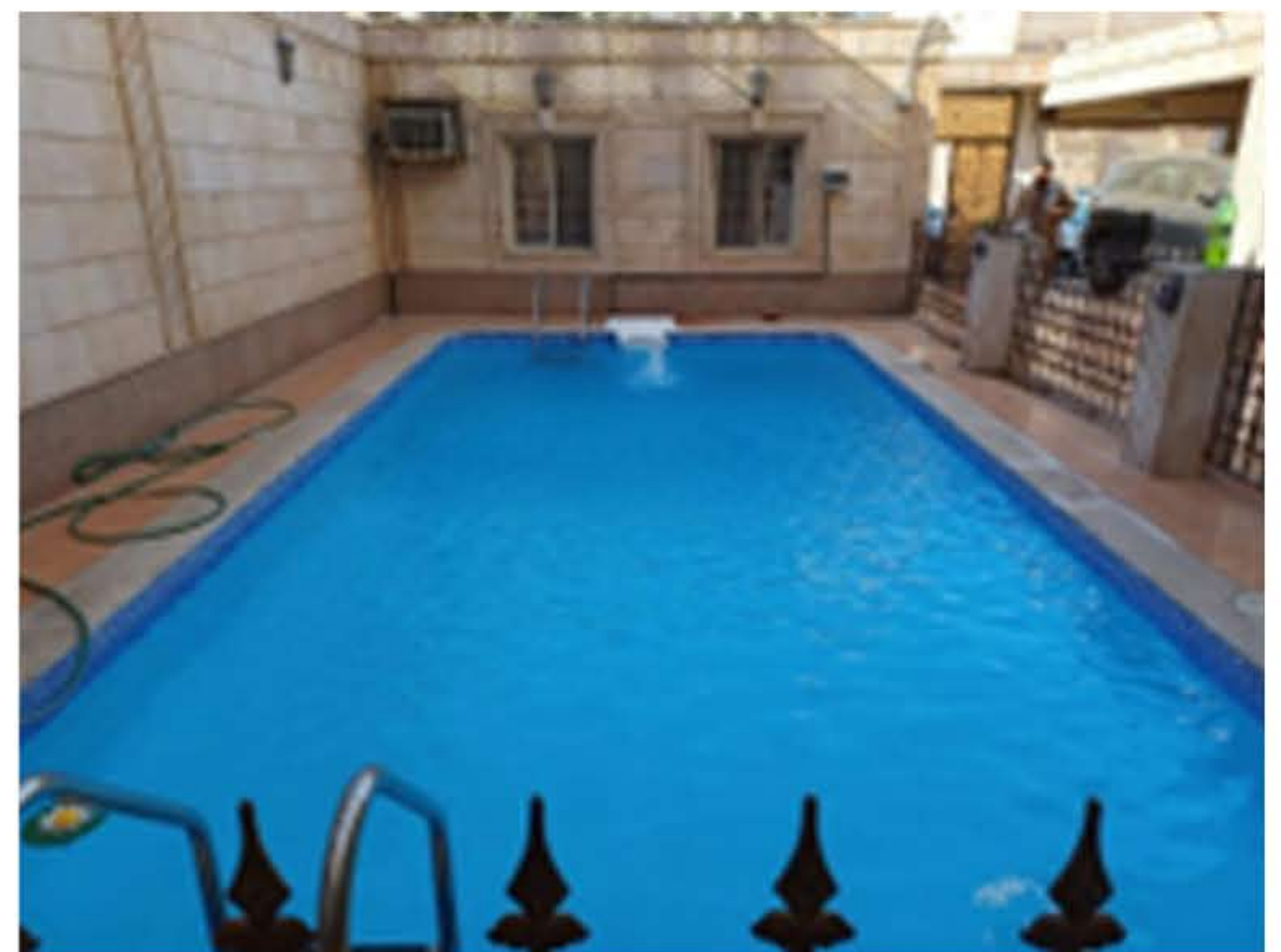
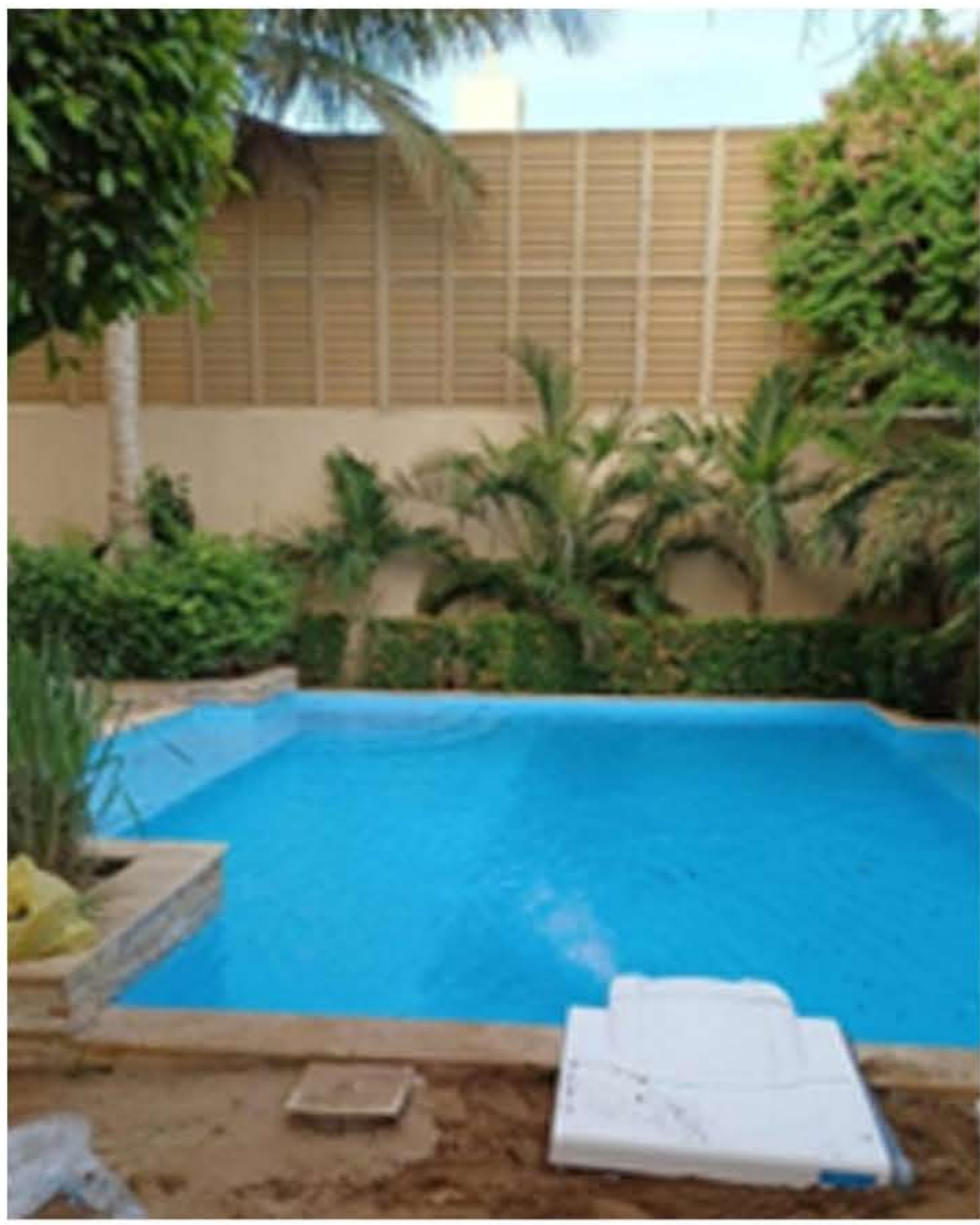




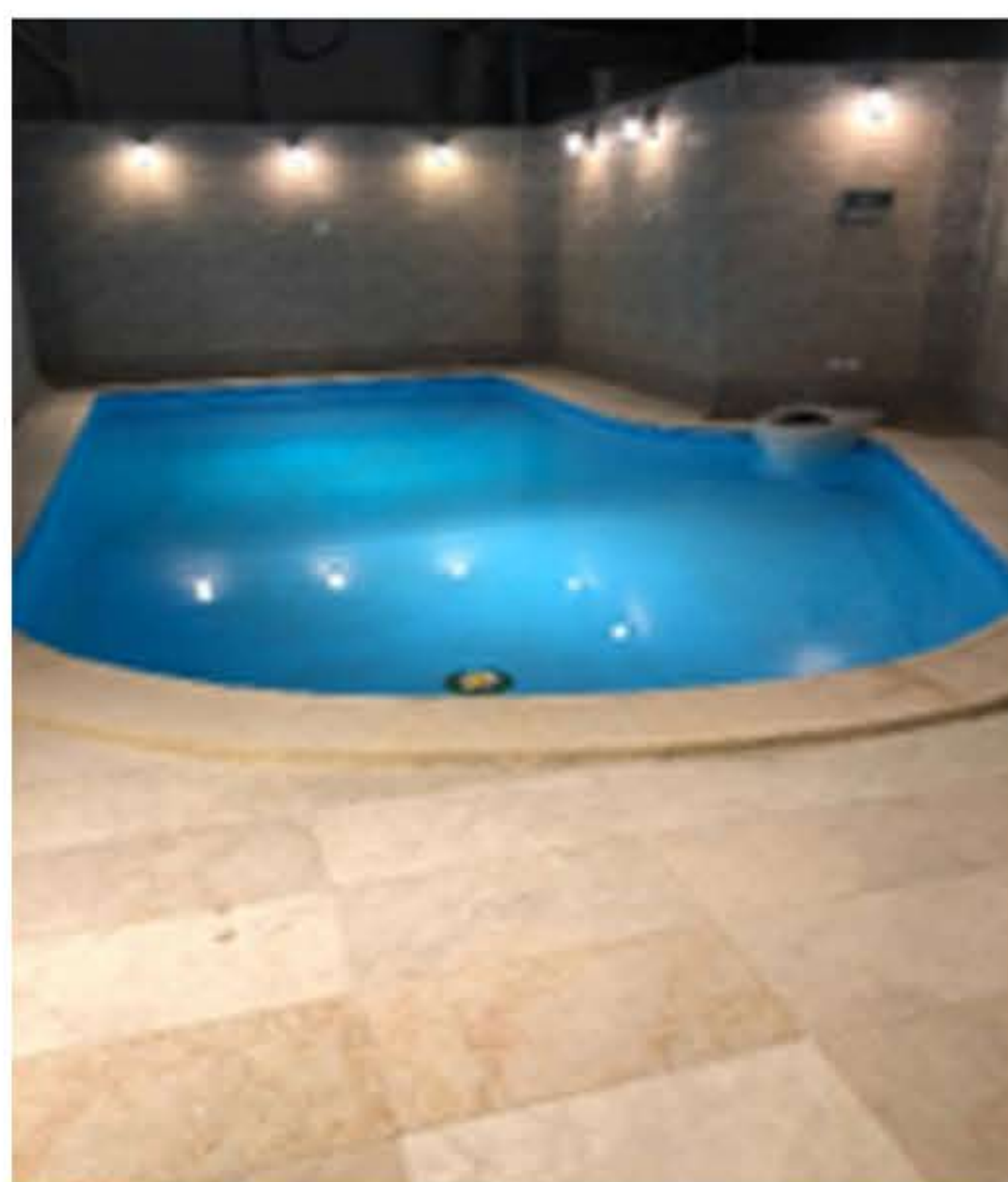
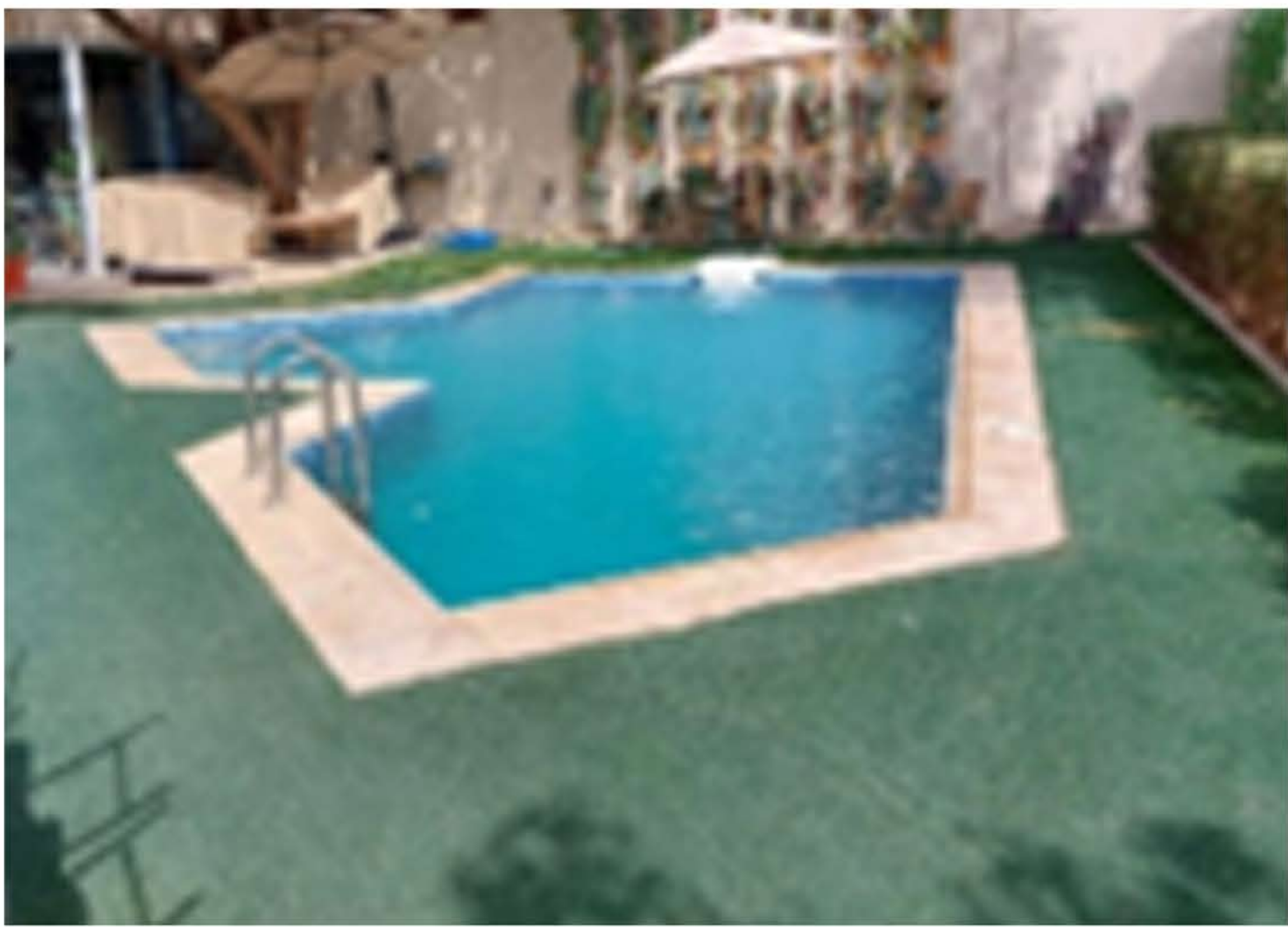
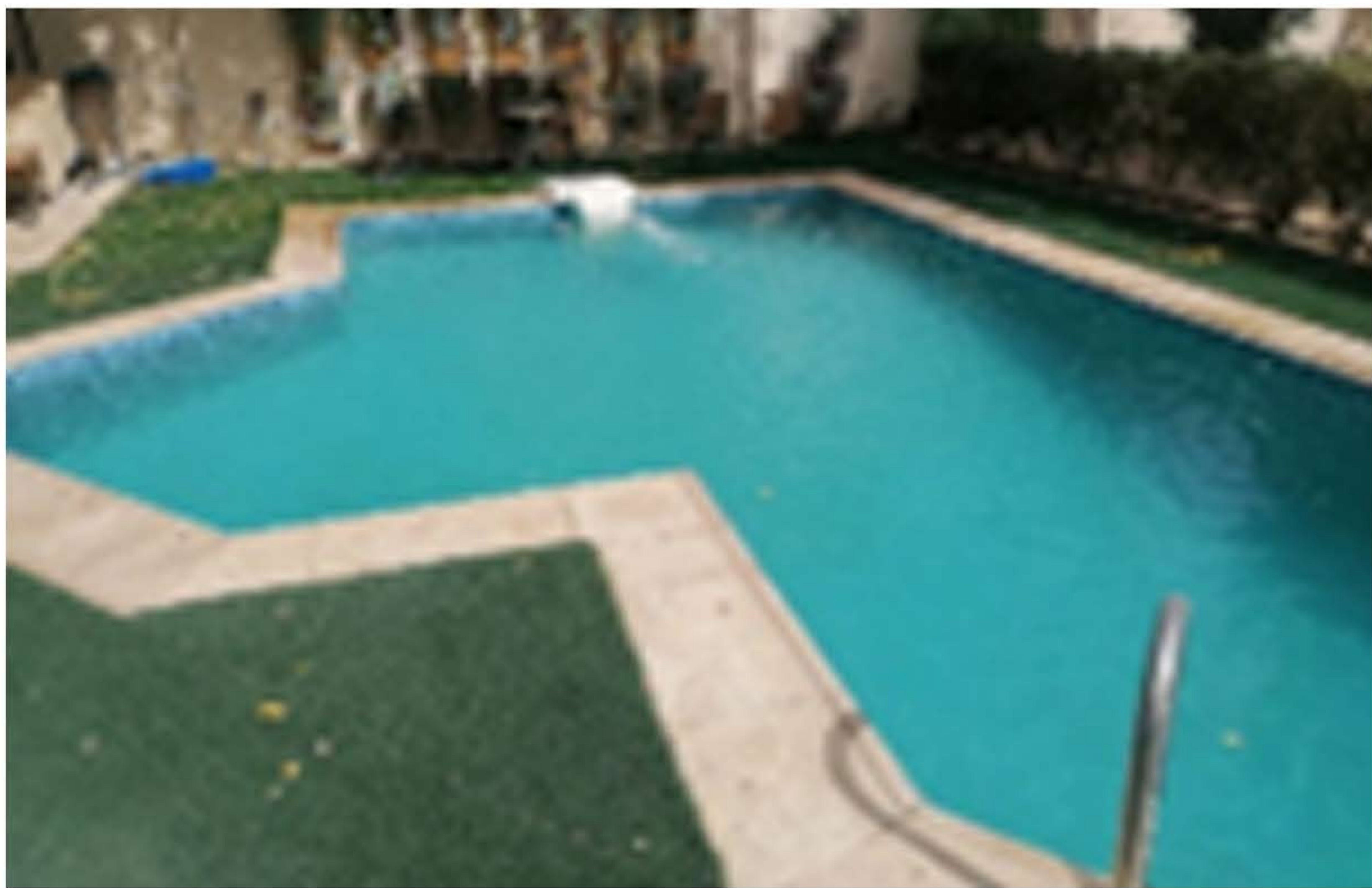














# CONTACT US

## PHONE



+966 11 265 2727 EXT. 233  
0581853096

## EMAIL



[sales@matechno.com](mailto:sales@matechno.com)

## INSTAGRAM



[https://instagram.com/matechno\\_1?igshid=YmMyMTA2M2Y=](https://instagram.com/matechno_1?igshid=YmMyMTA2M2Y=)

## TWITTER



<https://twitter.com/matechpools?s=11>

