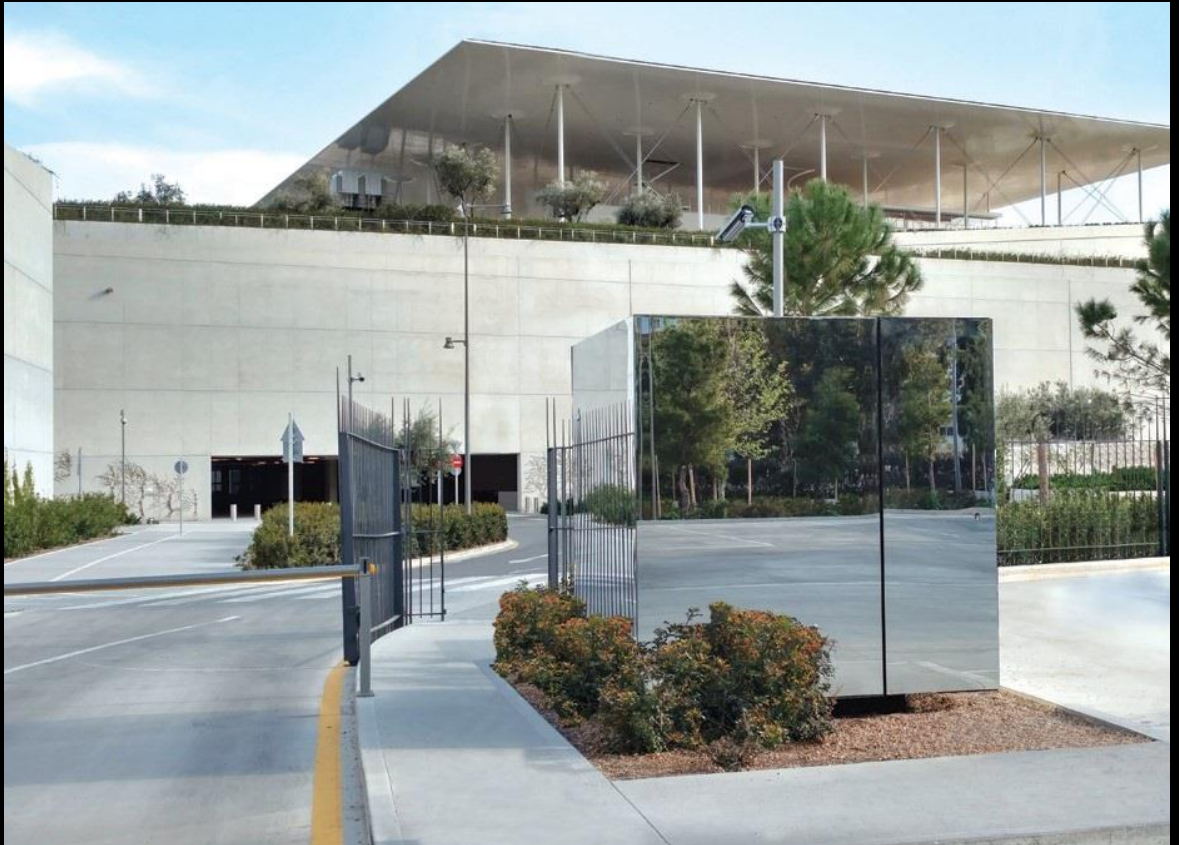


# Mirror Cube

PLUG n' PLAY BULLETPROOF GUARD SHACKS



<b>Ballistic Protection:</b>	Roof + 4 lateral sides.
<b>US Certifications:</b>	NIJ 0108.08 LEVEL IV+.
<b>EU Certifications:</b>	FB7+ EN1522 EN1523. BR7+ EN1063.
<b>Extra shootings (+):</b>	UL752 Level 10 (Official test report Body & Glass).
<b>Openings:</b>	
<b>Windows</b>	<b>7</b>
<b>Window dimensions</b>	80cmW x 80cmH.
<b>Door dimensions</b>	70cmW x 205cmH
<b>Door Window:</b>	40cmW x 60cmH
<b>Door opening system</b>	<b>No knob/ opens by magnetic card - access controlled</b>
<b>Standard equipment:</b>	
<b>Working bench:</b>	1.
<b>Locks:</b>	Security lock.
<b>Cables:</b>	Electricity/Ethernet/Phone.
<b>Sockets:</b>	2 (electricity) 1 (Ethernet )1 (phone line).
<b>Fuse box:</b>	1 (including all required fuses for A/C, Lights, Sockets).
<b>Lights:</b>	1 (ceiling / dimmable).
<b>HVAC:</b>	9000 BTU without external unit
<b>HVAC preparations:</b>	Pre-Wired, Fuse, Line Set Opening.
<b>Lifting points:</b>	4 on top of construction.
<b>Cladding</b>	6+6 triplex glass, mirror effective, type Spyglass
<b>Upon Request:</b>	
<ul style="list-style-type: none"> <li>Intercom Kit.</li> </ul>	<ul style="list-style-type: none"> <li>Floor bulletproof protection.</li> </ul>
<b>Plug &amp; Play Status:</b>	Ready to be connected to public networks (Electricity / Internet / Phone).

Product Description	External Dimensions			Kg	Transportation Details
	CM				40 feet High Cube Maritime Container
Series	Width	Length	Height	Weight	Items
<b>Mirror Cube</b>	220	220	230	5.2t	4