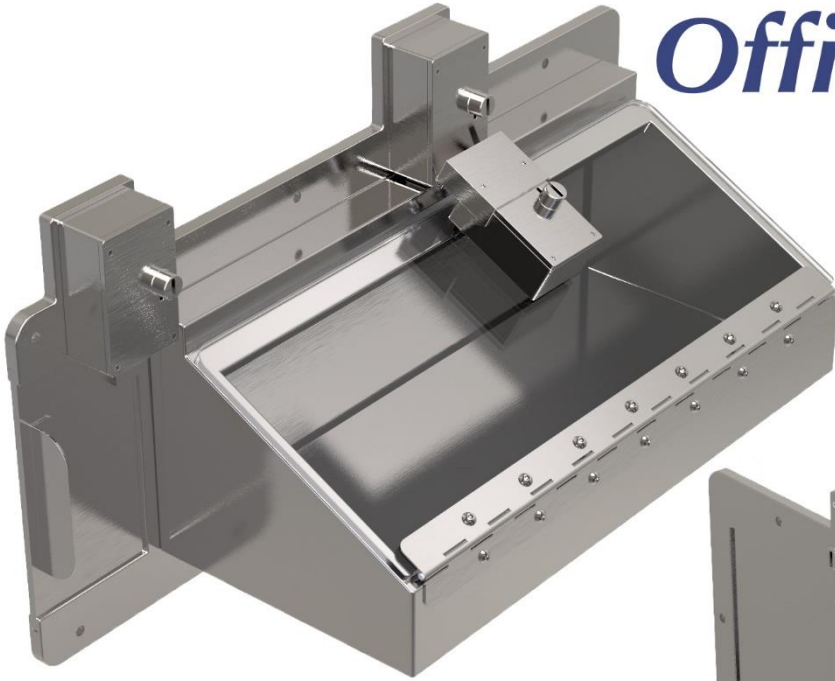




# MILLENNIUM

**PATENTED ACCESS CONTROL SYSTEM (PACS)**

## *New Technology in Correction Officer Safety*



***MPACS 200/3P Series***



***Millennium Access Control  
Food Pass eliminates direct contact  
between correction officers and violent  
inmates housed in segregation units.***

***Made in USA***

***[www.millenniumpacs.com](http://www.millenniumpacs.com)***

***Phone: 1-888-242-2219***

# ***Introducing The Ultimate Safety System for Handling Violent Inmates In Segregation Units.***

*Millennium Access Control Food Pass will retrofit to existing cell doors in place of the current hinged food pass. The unique patented triple lock system protects correction officers from direct contact with violent segregated inmates. The Access Control Food Pass allows the safe passage of food, medication, and documents into the cell, and also facilitates the controlled release and return of an inmate without exposing correction officers to potential battery and bodily fluids.*



## ***Design Features***

*Patented triple Lock System  
Sliding Steel Door with Integral Ratchet  
Mechanism Operated by Security Lock  
1/2" Clear Lexan Cover  
Available for Center Food Pass or  
Side Cuff Detention Doors  
Available with Fixed, Removable, or  
Hinged Tray Configurations  
Built to Protect and Last*



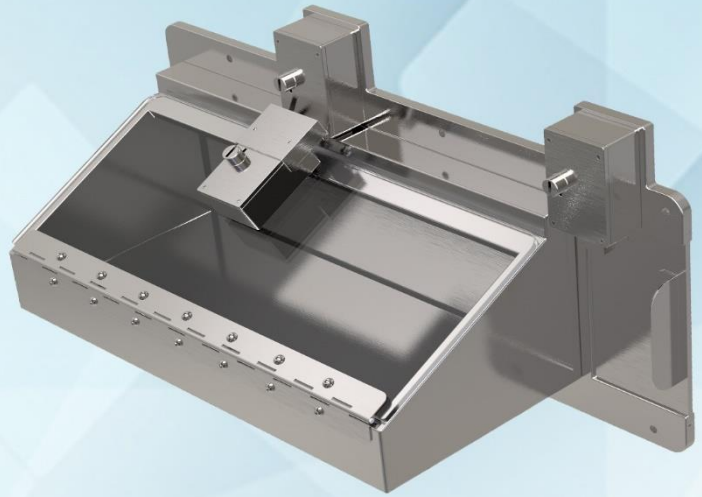
*1 Year Limited Warranty  
Heavy Duty All Stainless Steel  
Construction  
Retrofits to Existing Detention Doors  
Controlled release and return of an  
inmate to the cell without exposing the  
correction officer to potential battery*

*MPACS/200 Series available in right and left hand opening models. Custom sizes to accommodate specific food tray and/or cell door configurations available. Professional installation quoted on request.*

## *Operation of the Access Control Food Pass*

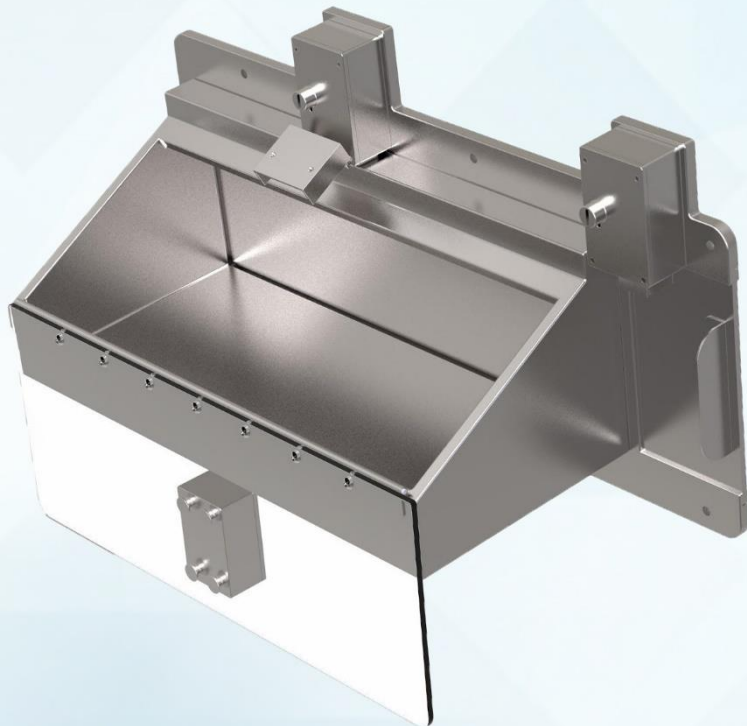
**Fig. 1**

**1.1** *The triple lock system with sliding metal door and hinged cover gives the correction officer control of the food pass opening in standard detention doors, and eliminates direct contact with violent inmates.*



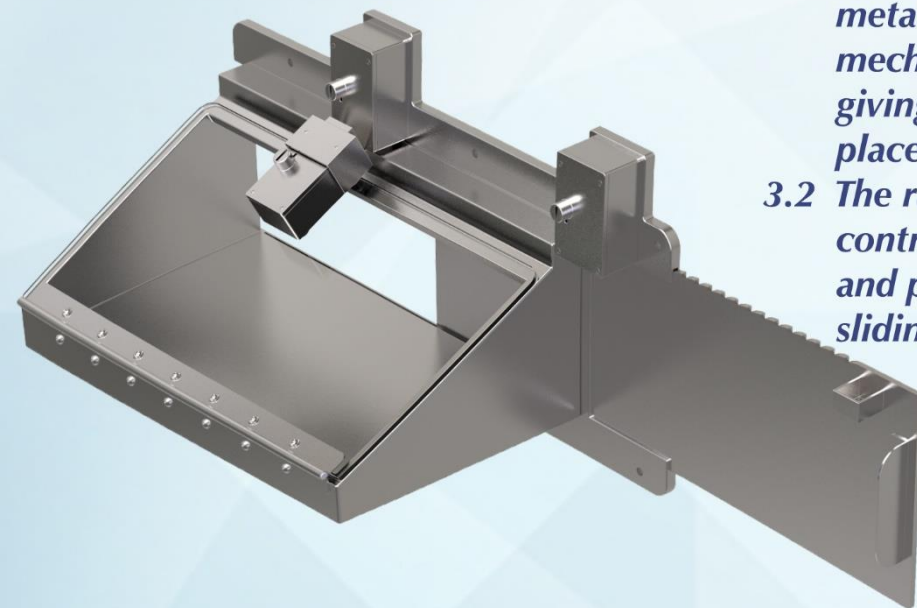
**Fig. 2**

- 2.1** *The correction officer unlocks and opens the hinged cover to gain access to the interior of the tray.*
- 2.2** *The item(s) to be passed to the inmate is placed inside the tray. The cover is then closed and locked, effectively restricting the inmate direct access to the space outside the cell while retrieving the item(s).*



**Fig. 3**

- 3.1** *The correction officer unlocks the sliding metal door also releasing the ratchet mechanism, and opens the sliding door giving the inmate access to the item(s) placed inside the tray.*
- 3.2** *The ratchet mechanism allows the officer to control how far the sliding door is opened, and prevents the inmate from opening the sliding door further from inside the cell.*



## MPACS/200 Series - Center Mount Drop Down Tray

The MPACS/200 Series Food Pass is a center mount design with a drop down tray. This configuration is recommended for use on sliding and hinged cell doors with a center food pass opening. The tray assembly is hinged and removable.

The sliding door is controlled by a ratchet mechanism to give the correction officer control in setting the opening of the door. Angled tray design combined with the ratchet operated door also makes the unit effective for applying chemical spray into cell without exposing correction officer to assault.

### MPACS/200 Series Features

Lock on frame has integral mechanism to operate ratchet and release sliding door.

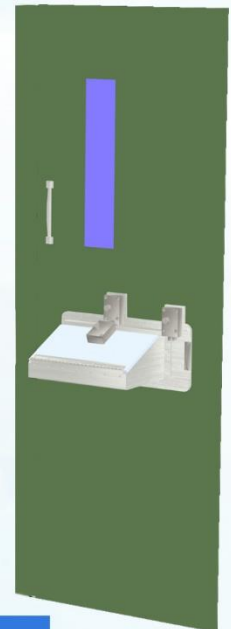
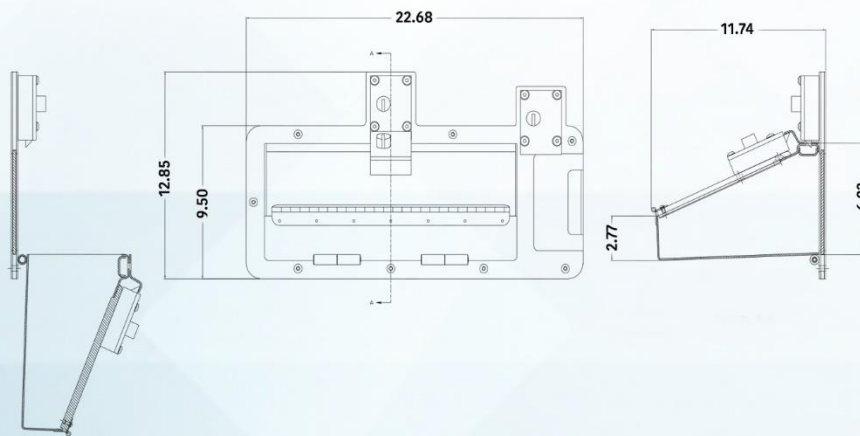
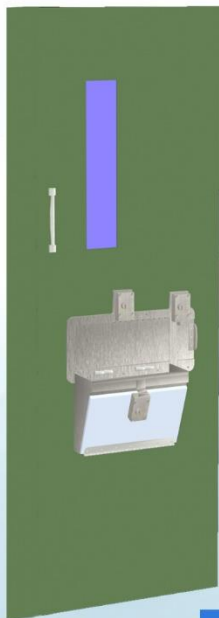
Lexan cover is secured by latch lock.

Welded strap on tray assembly denies inmates access to tampering with latch lock on Lexan cover.

Tray is pitched 2 degrees to allow spilled liquids to flow away from the cell door and toward the (2) drains in the bottom of the tray.

All stainless steel construction for strength, durability and hygiene.

Latch lock also available with Mogul cylinder or thumb turn.



#### Material Specifications for MPACS 200/3P

Security Lock Type	No. 17 latch - paracentric lock
Tray Material	12 gauge 304 stainless steel
Sliding Door Material	3/16" thick 304 stainless steel
Frame Material	1/2" thick 304 stainless steel
Cover Material	1/2" thick clear Lexan
Hinge	3/16" stainless steel piano hinge