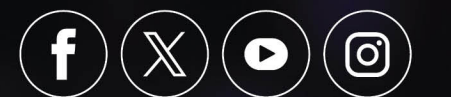


# AWARDS BROCHURE



[www.worldpolicesummit.com](http://www.worldpolicesummit.com)

# AWARD CATEGORIES



**INSPIRING  
FEMALE OFFICER  
AWARD**



**BEST POLICE  
APPLICATION  
AWARD**



**EXCELLENCE IN  
ROAD SAFETY  
AWARD**



**EXCELLENCE IN  
CRIMINAL  
INVESTIGATION  
AWARD**



**INNOVATIVE  
POLICE FORCE  
AWARD**



**GOOD  
SAMARITAN  
AWARD**



**EXCELLENCE IN  
ANTI-NARCOTICS  
AWARD**



**EXCELLENCE IN  
CUSTOMER SERVICE  
IN POLICING  
AWARD**



**BEST ARTIFICIAL  
INTELLIGENCE  
IMPLEMENTATION  
IN POLICING  
AWARD**



**PEOPLE OF  
DETERMINATION  
EXCELLENCE  
AWARD**



**EXCELLENCE IN  
FORENSIC SCIENCE  
AWARD**





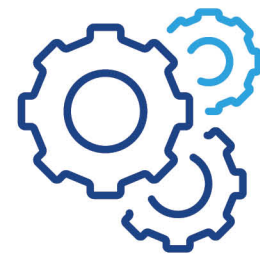
## INSPIRING FEMALE OFFICER AWARD



# INSPIRING FEMALE OFFICER AWARD

This award category recognizes the achievements of outstanding women in global policing and law enforcement for their exemplary leadership and operational skills, These women have made a significant impact on their agencies and have demonstrated a continuous drive for growth and success.

## ASSESSMENT CRITERIA:



### **Operational/Tactical Expertise:**

Assess the officer's knowledge, innovation, and crisis management skills in operational and tactical scenarios.



### **Team/Unit Management:**

Evaluate leadership abilities, team development initiatives, and resource management efficiency.



### **Mentorship:**

Review the establishment of mentoring relationships, career development support, and positive impact on mentees.



### **Results and Achievements:**

Examine documented achievements, measurable outcomes, and recognition received.

## REQUIREMENTS FOR NOMINATION:

Incumbent police officers or civilians from law enforcement organization who have gone beyond their call of duty to protect the communities they serve in despite their physical challenges.

Officers or employees who suffered disabilities due to injuries caused by the fieldwork were able to continue a high level of performance in serving the force or law enforcement organization can also submit entries for this category.

Individuals working within a police force's operational, field, leadership, or civilian roles functions can submit entries

Entries can be made by the individual directly. Colleagues, peers or other representatives from the police force may also submit an entry on behalf of the individual.

Police forces may nominate more than one employee - individual in this category. do not submit your entries more than once. If multiple entries are received for the same person, the most recent entry will be considered, and older entries will be deleted.

Awards Jury Members cannot be nominated or nominate themselves in this category.



**EXCELLENCE  
IN CRIMINAL  
INVESTIGATION  
AWARD**



# EXCELLENCE IN CRIMINAL INVESTIGATION AWARD

This award category recognizes the accomplishments of exceptional criminal investigation teams from global police forces who have implemented remarkable strategies to solve complex crimes and apprehend criminals.

## ASSESSMENT CRITERIA:



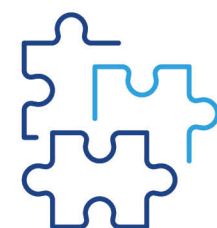
### Exceptional Performance and Achievements:

Review documented achievements and case resolutions, Forward-looking strategies in managing operation to improve Crime prevention, criminal identification.



### Impact on Community Safety:

Assess actions for community protection and outreach efforts.



### Complexity and Challenge of Cases:

Evaluate the complexity of cases and investigative techniques.



### Results and Measurable Outcomes:

Examine measurable outcomes and long-term.

## REQUIREMENTS FOR NOMINATION:

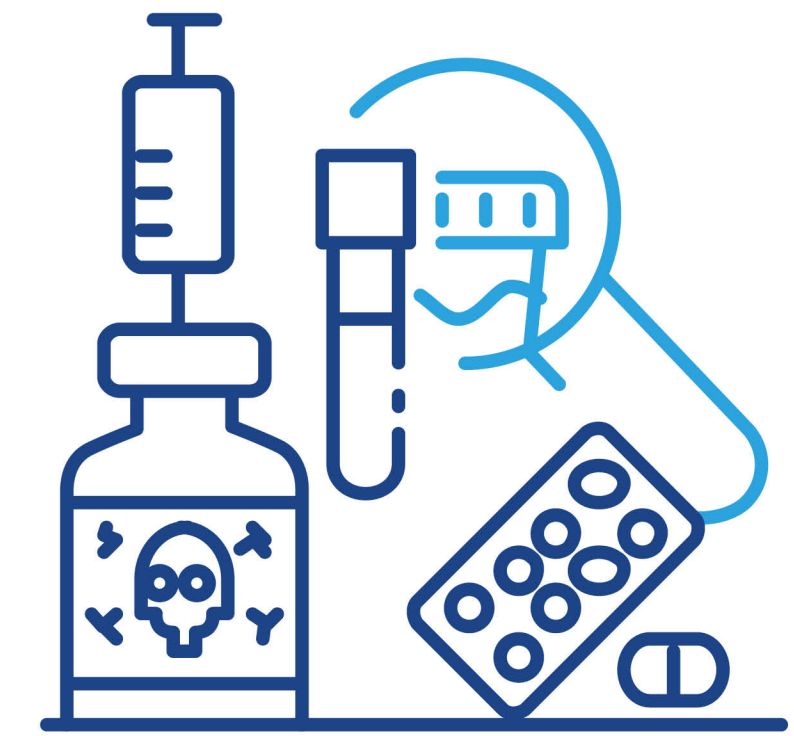
Entries can be submitted by teams within police forces or law enforcement agencies

Entries can relate to any crime form including homicide, drug trafficking, financial crime, cybercrime, etc.

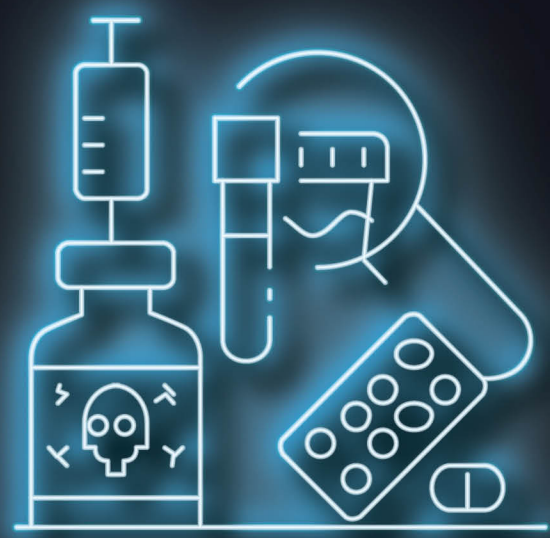
Please submit separate entries for each team/crime form in case you have different departments that would like to submit entries highlighting their initiatives.

do not submit your entries more than once. If multiple entries are received for the same person, the most recent entry will be considered, and older entries will be deleted.

Awards Jury Members cannot be nominated or nominate themselves in this category.



## EXCELLENCE IN ANTI-NARCOTICS AWARD



# EXCELLENCE IN ANTI- NARCOTICS AWARD

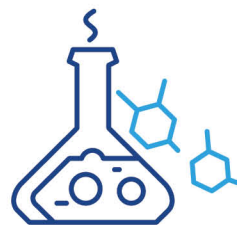
This award category recognizes the most effective anti-narcotics and drug awareness programs implemented by global police forces, drug enforcement agencies, and public health organizations. These programs should demonstrate a substantial impact on reducing the supply of narcotics or achieving a significant decline in substance use within communities.

## ASSESSMENT CRITERIA:



### Impact on Narcotics Supply:

Measure the program's success in reducing narcotics supply and highlight innovative disruption strategies.



### Decline in Substance Use:

Assess statistical improvements and long-term behavioral changes in substance use within the community.



### Community Engagement:

Evaluate public awareness efforts, community involvement, and feedback from stakeholders.



### Interagency Collaboration:

Review the effectiveness of coordination and resource sharing between police, drug enforcement, and public health agencies.



### Program Implementation and Results:

Examine strategic planning, adaptability, and measurable outcomes, including awards and recognitions.

## REQUIREMENTS FOR NOMINATION:

Teams within global police forces, drug enforcement agencies and public health institutions (including health ministries) who have championed novel drug awareness campaigns in their jurisdiction or have successfully performed a large -scale drug bust.

Entries can be on countering drug trafficking, drug awareness, de-addiction or rehabilitation programmes.

Entries can be submitted by teams within police forces or law enforcement agencies.

submit separate entries for each programme in case you have separate initiatives for awareness, rehabilitation, etc.

do not submit your entries more than once. If multiple entries are received for the same person, the most recent entry will be considered, and older entries will be deleted.

Awards Jury Members cannot be nominated or nominate themselves in this category.





**PEOPLE OF  
DETERMINATION  
EXCELLENCE AWARD**



# PEOPLE OF DETERMINATION EXCELLENCE AWARD

This award category recognizes the achievements of outstanding men and women in global policing and law enforcement for their exemplary professional accomplishments despite facing physical challenges.

## ASSESSMENT CRITERIA:



### Commitment to Duty Despite Physical Challenges:

Evaluate resilience, adaptation, and innovation in performing duties with physical disabilities.



### Exceptional Performance:

Assess documented achievements, recognitions, and sustained excellence.



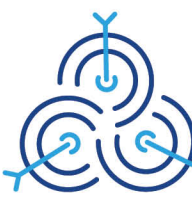
### Impact on Community Safety:

Review actions taken to protect the community, community outreach efforts, and positive influence.



### Inclusivity of Submissions:

Ensure eligibility for all roles within law enforcement and consider those injured in the line of duty.



### Results and Achievements:

Examine measurable outcomes, long-term impact, and personal growth post-injury.

## REQUIREMENTS FOR NOMINATION:

Incumbent police officers or civilians from law enforcement organization who have gone beyond their call of duty to protect the communities they serve in despite their physical challenges.

Officers or employees who suffered disabilities due to injuries caused by the fieldwork were able to continue a high level of performance in serving the force or law enforcement organization can also submit entries for this category.

Individuals working within a police force's operational, field, leadership, or civilian roles functions can submit entries

Entries can be made by the individual directly. Colleagues, peers or other representatives from the police force may also submit an entry on behalf of the individual.

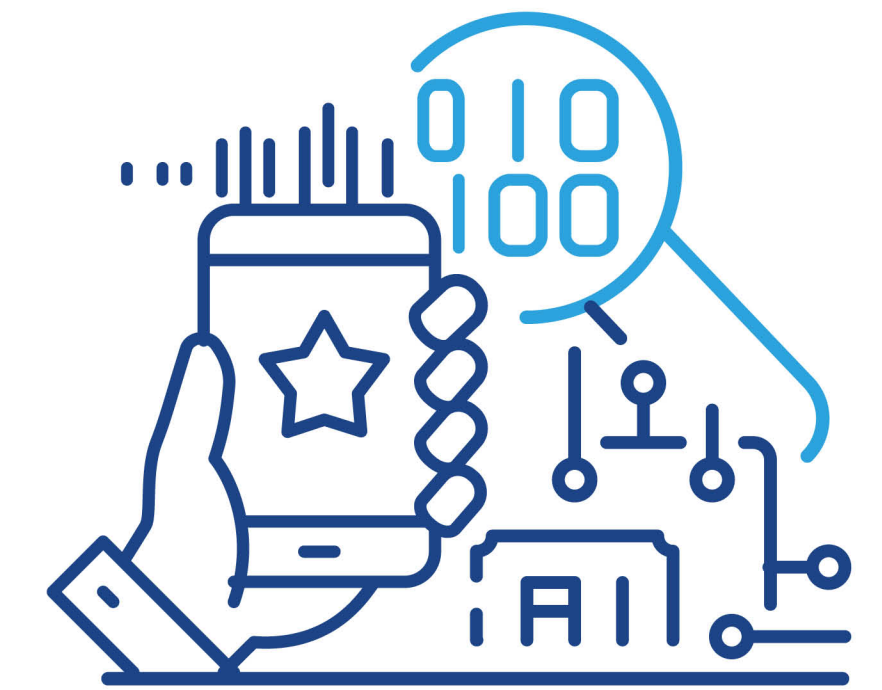
Police forces may nominate more than one employee - individual in this category.

do not submit your entries more than once. If multiple entries are received for the same person, the most recent entry will be considered, and older entries will be deleted.

Awards Jury Members cannot be nominated or nominate themselves in this category.



شرطة دبي  
DUBAI POLICE



BEST POLICE  
APPLICATION  
AWARD



# BEST POLICE APPLICATION AWARD

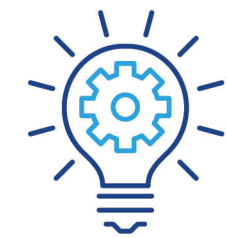
This award category recognizes innovative Police Smart Applications that elevate societal value and citizen well-being. Eligible entries limited to Police Force Headquarters, emphasizing exceptional design, technology, innovation, features, and user experience contributing to citizen life enhancement.

## ASSESSMENT CRITERIA:



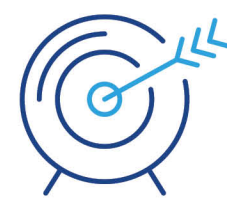
### Impact on Society:

Evaluate the app's measurable impact on improving the lives of citizens and enhancing societal value.



### Design and Innovation:

Assess the app's design, technological innovation, features, and user experience for creativity and effectiveness.



### Alignment with Objectives:

Consider how well the app aligns with the objectives of enhancing citizen well-being and adding value to society.



### Usability and Accessibility:

Evaluate the app's ease of use, accessibility for all users, and inclusivity in design and functionality.



### Results and Outputs:

Review the demonstrated outcomes and results achieved through the app in terms of improving police-citizen interactions and community safety.

## REQUIREMENTS FOR NOMINATION:

Police app's that add value to the society and citizens.

Police force headquarters are only eligible to nominate in this category.

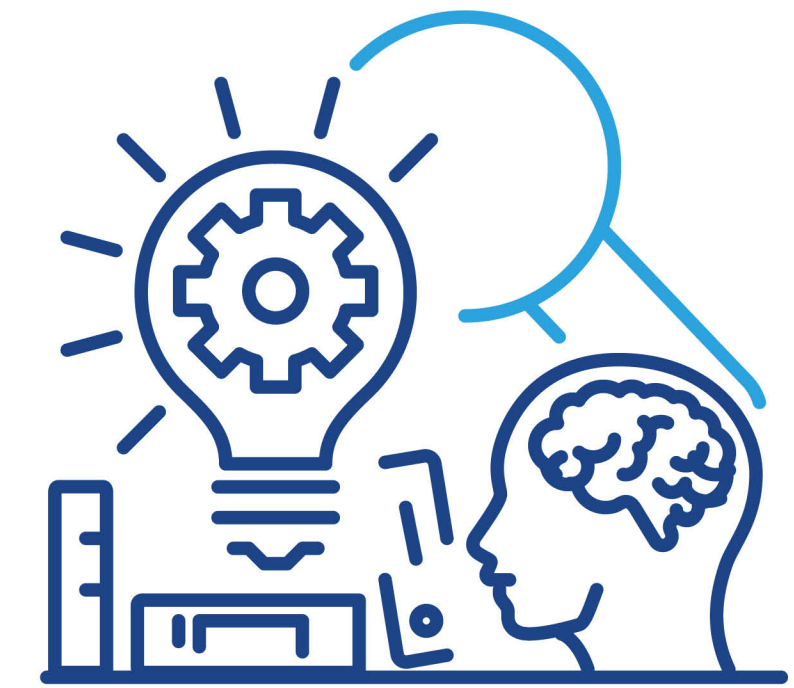
Please do not submit your entries more than once.

Individuals may not submit for this category.

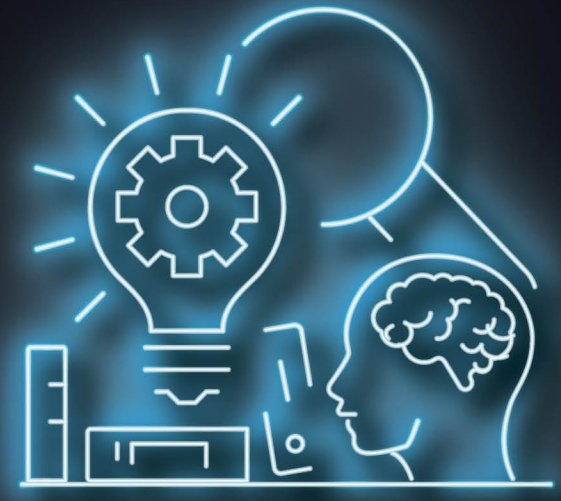
Smart police app's that have reflected outstanding outputs and results in enhancing the life of citizens.

The smart app must expose and reflect design, technology, innovation, features and user experience.

Awards Jury Members cannot be nominated or nominate themselves in this category.



# INNOVATIVE POLICE FORCE AWARD



# INNOVATIVE POLICE FORCE AWARD

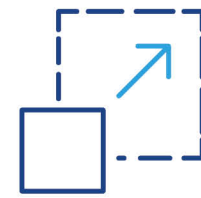
This award category recognizes and celebrates groundbreaking innovation programs within global police forces that significantly enhance day-to-day operations or bolster public safety and security.

## ASSESSMENT CRITERIA:



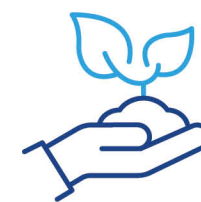
### Originality:

Evaluate the uniqueness and creativity of the innovation compared to existing practices.



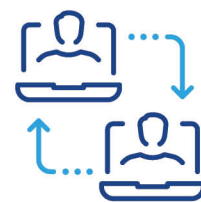
### Scalability:

Consider the potential for the program to be scaled up or replicated in other police forces.



### Sustainability:

Examine the program's long-term viability and its ability to adapt to changing needs.



### Stakeholder Engagement:

Review the level of collaboration and engagement with relevant stakeholders in implementing the innovation.



### Innovation Impact:

Assess the program's tangible impact on improving police operations or enhancing public safety.

## REQUIREMENTS FOR NOMINATION:

Teams within global police forces and law enforcement agencies who have spearheaded innovative methodologies, technologies, and research programmes to solve crimes or enhance operational capabilities of the force.

Entries can be related to any type of innovation within police forces and law enforcement agencies including operational enhancement, training, officer wellbeing, traffic safety, etc.

Open for multiple entries from departments within a police forces and law enforcement agencies.

Entry can be submitted on an individual or team level.

Awards Jury Members cannot be nominated or nominate themselves in this category.



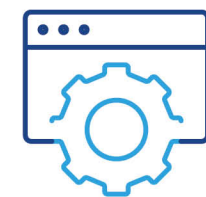
**EXCELLENCE IN  
CUSTOMER SERVICE  
IN POLICING AWARD**



# EXCELLENCE IN CUSTOMER SERVICE IN POLICING AWARD

This award category recognizes global police forces and law enforcement agencies for pioneering innovative methodologies and technologies in customer service, impacting security, public safety, traffic management, and more. Entries showcase non-stereotypical approaches that address current and future challenges while aligning with organizational objectives, open for submissions at the agency or team level.

## ASSESSMENT CRITERIA:



### **Innovative Service Delivery:**

Evaluate the creativity effectiveness of the service initiatives in addressing security, public safety, traffic management, law enforcement, and emergency response.



### **Alignment with Objectives:**

Consider how well the initiatives align with the organization's objectives, future directions, and strategic goals in enhancing competitiveness and sustainability.



### **Adaptability:**

Review the adaptability of the initiatives to current and future challenges, demonstrating a proactive approach to evolving needs and trends.



### **Customer Impact:**

Assess the tangible impact of the services on improving the quality of life for citizens and enhancing their experience with law enforcement agencies.

## REQUIREMENTS FOR NOMINATION:

Global police forces / law enforcement agencies and their teams that have spearheaded innovative methodologies, technologies, and research programs in providing exceptional services towards customers as citizens of the society.

Entries can be related to any type of service that is provided and reflected as innovative / significant / smart or inventive within police forces and law enforcement agencies including those services that impact security, public safety, traffic safety, uphold law, preventing crime, improving the quality of life, enforcing traffic law and attending to emergencies exposing a positive output to improve the competitive position the organization / agency / entity holds and possibly investing such results and impacts in the future.

Entries must expose and reflect the volume of creative initiatives in a non-stereotypical manner in the field of customer service to contribute to current and future challenges along with adapting with future directions and objectives.

Open for multiple entries from departments within a police forces and law enforcement agencies.

Entry can be submitted on a(n) Agency or Team level only.

Awards Jury Members cannot be nominated or nominate themselves in this category.





## EXCELLENCE IN FORENSIC SCIENCE AWARD



# EXCELLENCE IN FORENSIC SCIENCE AWARD

This award category recognizes and focuses on the field of Forensic Science and the innovative use of forensic science tools and techniques by entities engaged in law enforcement activities. Nominations should demonstrate how the current forensic science innovation aided criminal investigations and the broader impact of its use. Exemplary nominations should also illustrate how the forensic science innovation was tested and subjected to scientific rigor.

## ASSESSMENT CRITERIA:



### **Innovation and Novelty:**

Evaluate the uniqueness and originality of the forensic science tools and techniques used.



### **Impact on Criminal Investigations:**

Assess how the forensic science innovation significantly contributed to solving criminal cases, Review case studies or examples where the innovation led to successful outcomes in investigations.



### **Broader Impact:**

Measure the wider implications and benefits of the forensic science innovation on law enforcement practices, Examine how the innovation has influenced policy, procedures, or general forensic science standards.



### **Assess and Validate:**

Ensure the forensic science innovation has been rigorously tested and validated through scientific methods, Look for evidence of peer-reviewed publications, trials, or studies supporting the effectiveness of the innovation.

## REQUIREMENTS FOR NOMINATION:

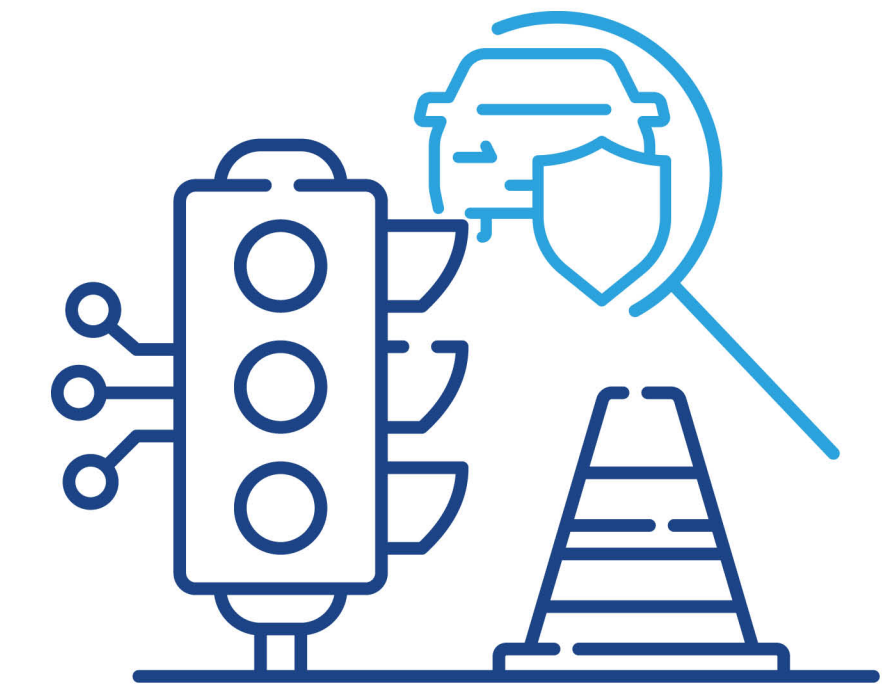
Teams within global police forces, drug enforcement agencies, research institutions, and academia who have spearheaded ground-breaking scientific methodologies, and research programmers to solve crime.

Entries can be related to any crime form and any vertical within forensics and criminology including genetics, fingerprints, digital forensics, etc.

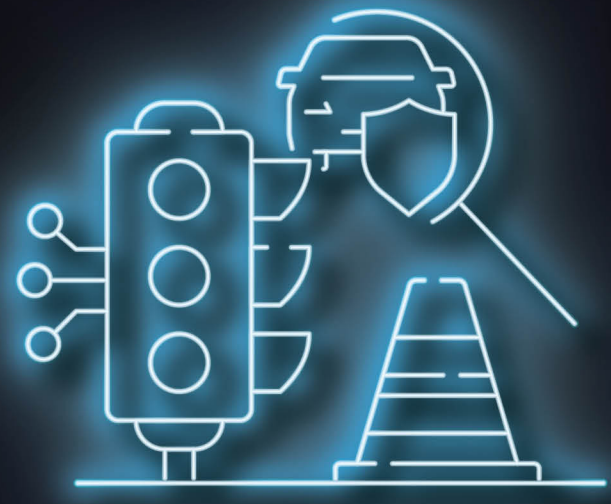
Open for multiple entries from departments within a police force, law enforcement agency, research institution, or academia

Entry can be submitted on an individual or team level

Awards Jury Members cannot be nominated or nominate themselves in this category.



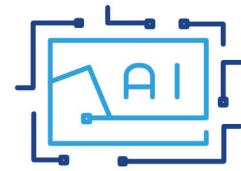
## EXCELLENCE IN ROAD SAFETY AWARD



# EXCELLENCE IN ROAD SAFETY AWARD

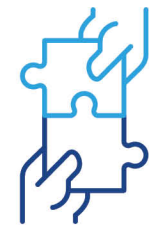
This award category Recognize the teams in global police forces and law enforcement agencies driving innovation in road safety through advanced methodologies, technologies, and research. Entries encompass a wide range, from operational enhancements to officer wellbeing and traffic safety initiatives, allowing multiple submissions per department on a team level.

## ASSESSMENT CRITERIA:



### Technological Advancement:

Assess the level of technological sophistication and novelty in the methodologies and technologies used.



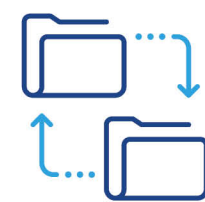
### Research Contribution:

Consider the depth and significance of research contributions in advancing road safety initiatives.



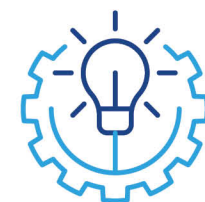
### Operational Efficiency:

Evaluate how the innovation enhances operational efficiency, including traffic management and officer wellbeing.



### Scalability and Replicability:

Review the potential for the innovation to be scaled up or replicated in other departments or agencies for broader impact.



### Innovation Impact:

Evaluate the effectiveness and impact of the innovation on improving road safety and related areas within police forces and law enforcement agencies.

## REQUIREMENTS FOR NOMINATION:

Teams within global police forces and law enforcement agencies who have spearheaded innovative methodologies, technologies, and research programs in the road safety field / traffic.

Entries can be related to any type of innovation within police forces and law enforcement agencies including operational enhancement, training, officer wellbeing, traffic safety,

Open for multiple entries from departments within a police forces and law enforcement.

Entry can be submitted on an individual or team level.

Awards Jury Members cannot be nominated or nominate themselves in this category.



## GOOD SAMARITAN AWARD



## GOOD SAMARITAN AWARD

This award category recognizes the accomplishments of outstanding individuals from the public community who have made exceptional contributions to preventing or solving crimes, enhancing public safety, or providing crucial assistance to those in need, potentially saving lives.

### ASSESSMENT CRITERIA:



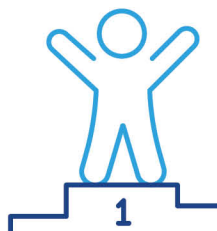
#### Extraordinary Concern for Safety:

Assess actions taken to ensure community safety, including preventive measures and emergency response.



#### Helping Those in Need:

Evaluate direct assistance provided to individuals in need and the positive impact on the community.



#### Results and Achievements:

Review documented evidence of efforts, including awards and recognitions received.



#### Long-term Impact:

Consider the sustained improvements and long-lasting benefits to the community or individuals.

### REQUIREMENTS FOR NOMINATION:

Individuals from the public community who has shown extraordinary concern for the safety of society or helping other individuals who are most in need.

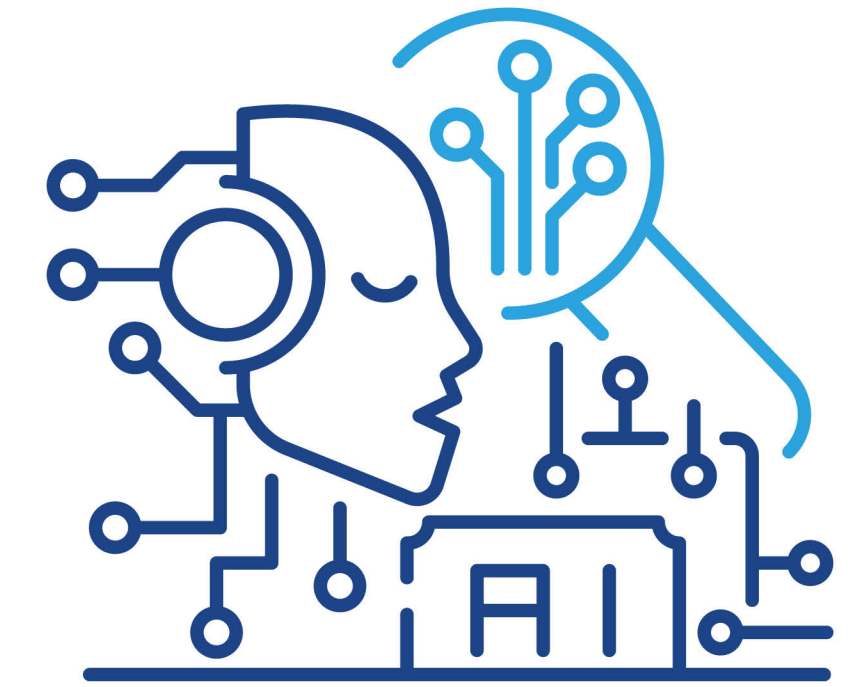
Individuals working within a police force's operational, field, leadership, or civilian roles functions can submit entries.

The individual can submit entries directly. Neighbours, police officers, peers, or relatives may also submit an entry on behalf of the individual

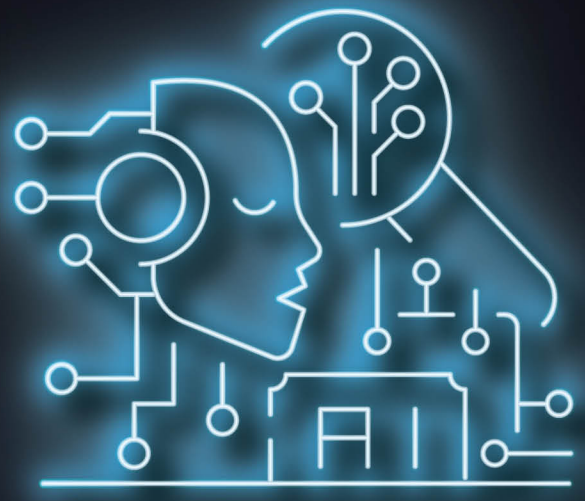
Police officers cannot be nominated or nominate themselves for this category

do not submit your entries more than once. If multiple entries are received for the same person, the most recent entry will be considered, and older entries will be deleted.

Awards Jury Members cannot be nominated or nominate themselves in this category.



**BEST ARTIFICIAL  
INTELLIGENCE  
IMPLEMENTATION  
IN POLICING AWARD**



# BEST ARTIFICIAL INTELLIGENCE IMPLEMENTATION IN POLICING AWARD

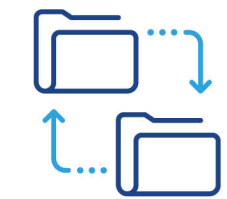
This award category celebrates innovative and impactful AI implementation programs within global police forces that significantly enhance operational efficiency, improve public safety, and advance crime prevention.

## ASSESSMENT CRITERIA:



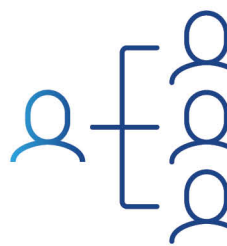
### Uniqueness:

- Evaluate the uniqueness and creativity of the AI solution compared to existing practices.
- Consider how the AI introduces novel approaches to policing challenges.



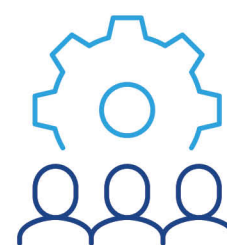
### Scalability:

- Assess the potential for the AI solution to be scaled or replicated in other forces.
- Examine its flexibility and adaptability to various contexts.



### Stakeholder Engagement:

- Review the level of collaboration with officers, community members, and partners.
- The benefits to the Officers, Community and Partners.



### Impact:

- Assess the tangible impact on police operations.
- Evaluate the contribution to public safety, crime reduction, and community trust.

## REQUIREMENTS FOR NOMINATION:

The AI solution should be in a mature stage.

The solution should be developed for Law Enforcement Entity.

Open for multiple entries from departments within a police force, law enforcement agency, research institution, or academia.

Awards Jury Members cannot be nominated or nominate themselves in this category.





**FOR INQUIRIES**  
wps@dubaipolice.gov.ae

X f @ in  
@policessummit - @Worldpolicessummit

www.worldpolicessummit.com @

**THANK YOU**