



# JSEC in the NATO World

## NATO Combat Engineer/Logistician Conference

12 – 14 MAR 2024

JSEC ACOS JMILENG - Phillip Borders, OF-5 USA A

The overall classification of this presentation is  
**NATO UNCLASSIFIED – Releasable to EEAS, EUMS and European Commission staffs**

# Overall Agenda

**1. JSEC at a glance**

**2. RSN and Corridor Development**

**3. RSN Activation**

**4. CRSP**

# Overall Agenda

**1. JSEC at a glance**

**2. RSN and Corridor Development**

**3. RSN Activation**

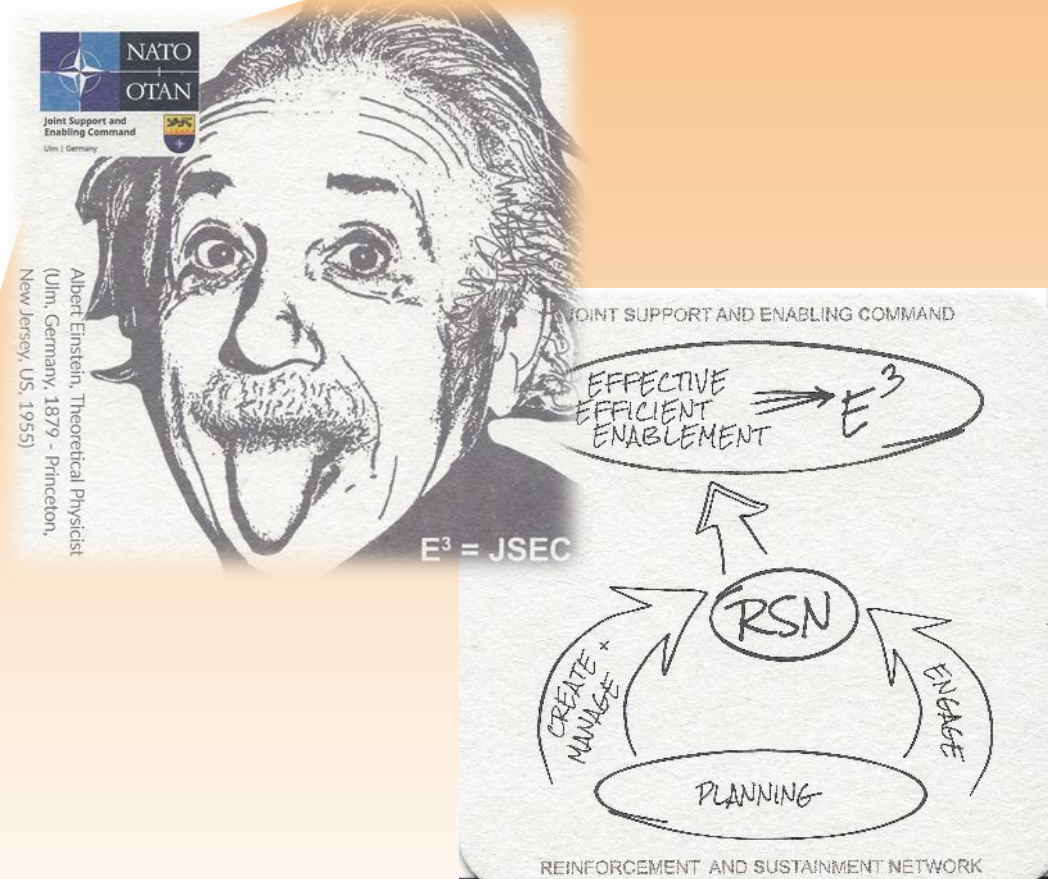
**4. CRSP**

# BLUF

Joint Support and Enabling Command is  
Supreme Allied Commander Europe's  
advisor on enablement

**E<sup>3</sup> – Effective – Efficient – Enablement**

at speed



# JSEC's Mission



- Prepares the conditions for **Enablement** and
- coordinates **Reinforcement by Forces** and **Sustainment**
- in order to contribute to the Alliance's ability to **project and sustain combat power** into, across and from the AOR.



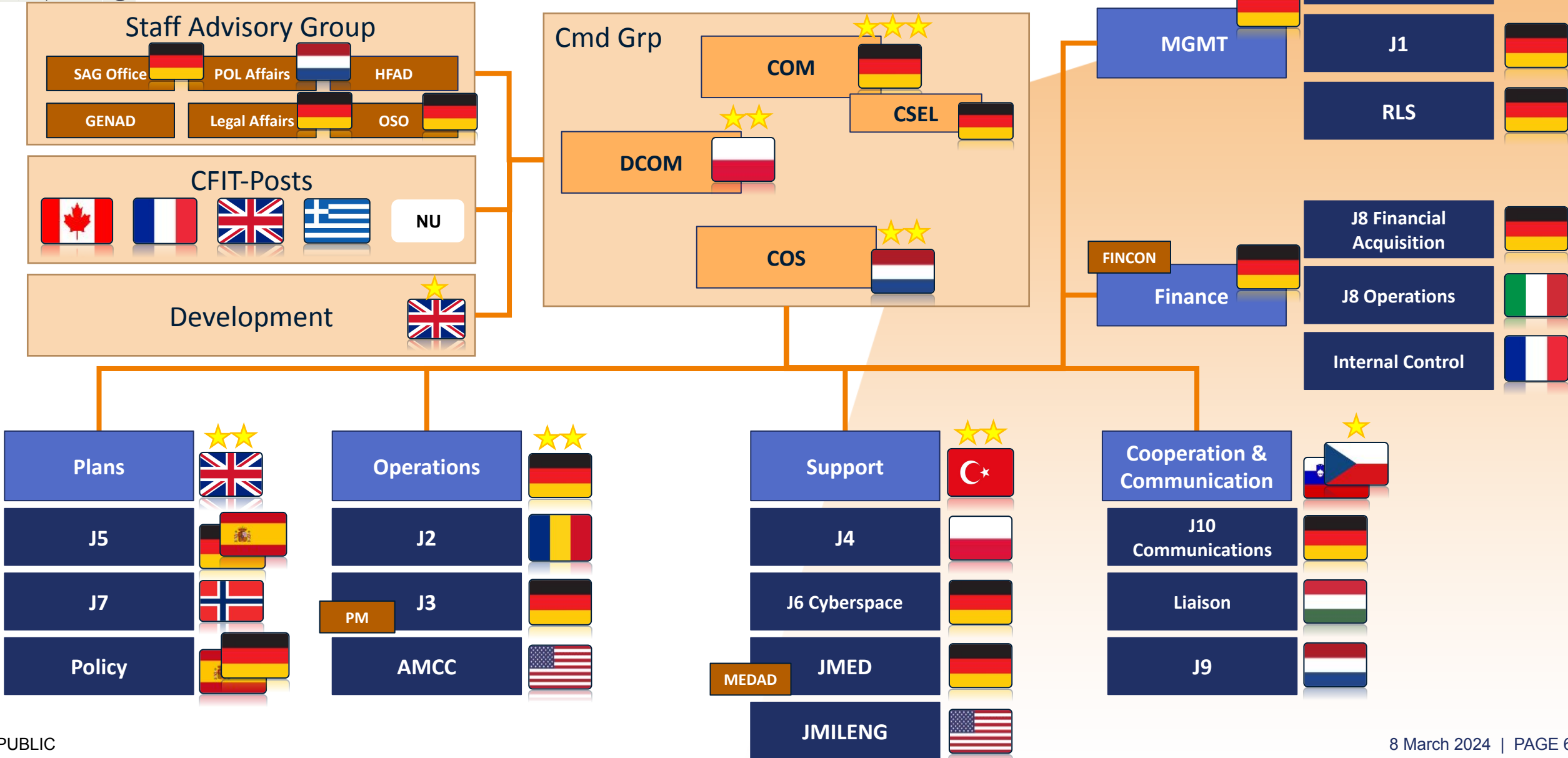
9.000

km

km

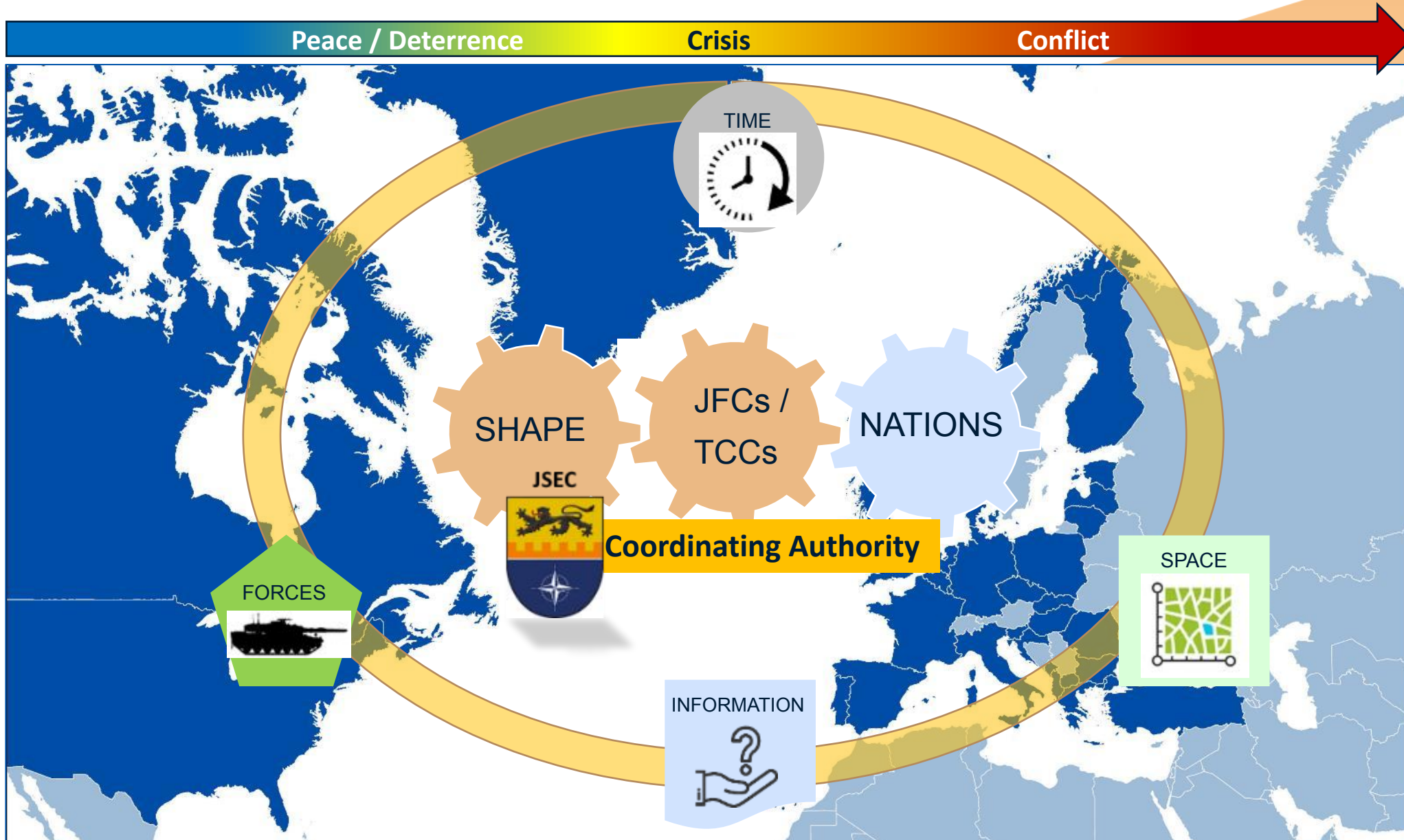
3.500

# JSEC Structure



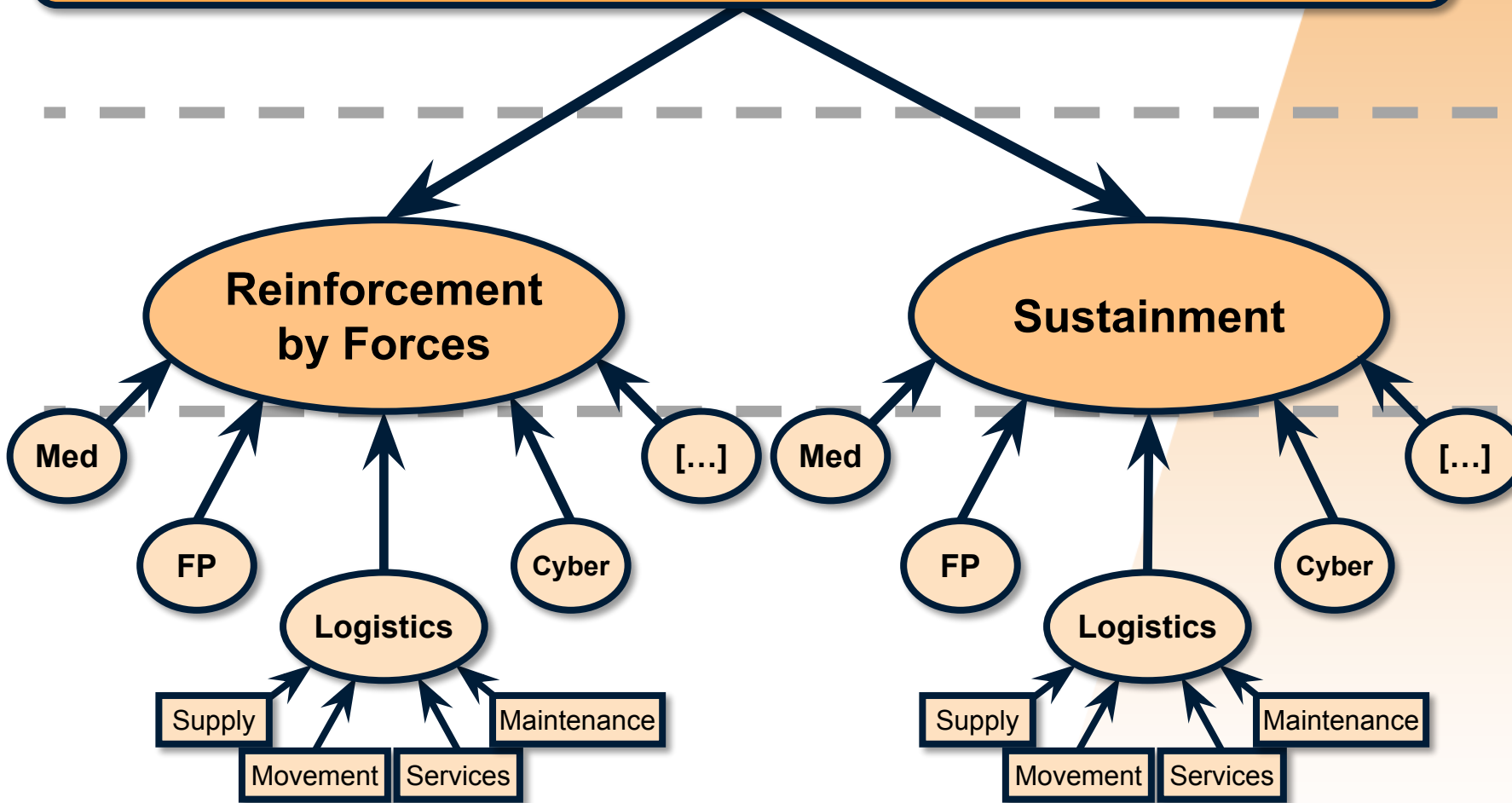


# JSEC – Operational Challenges



# Terminology

## Enablement



Activities to set a condition for ...

Strategic/Operational effect to be achieved by ...

Means supporting the achievement of effects



# Overall Agenda

**1. JSEC at a glance**

**2. RSN and Corridor Development**

**3. RSN Activation**

**4. CRSP**

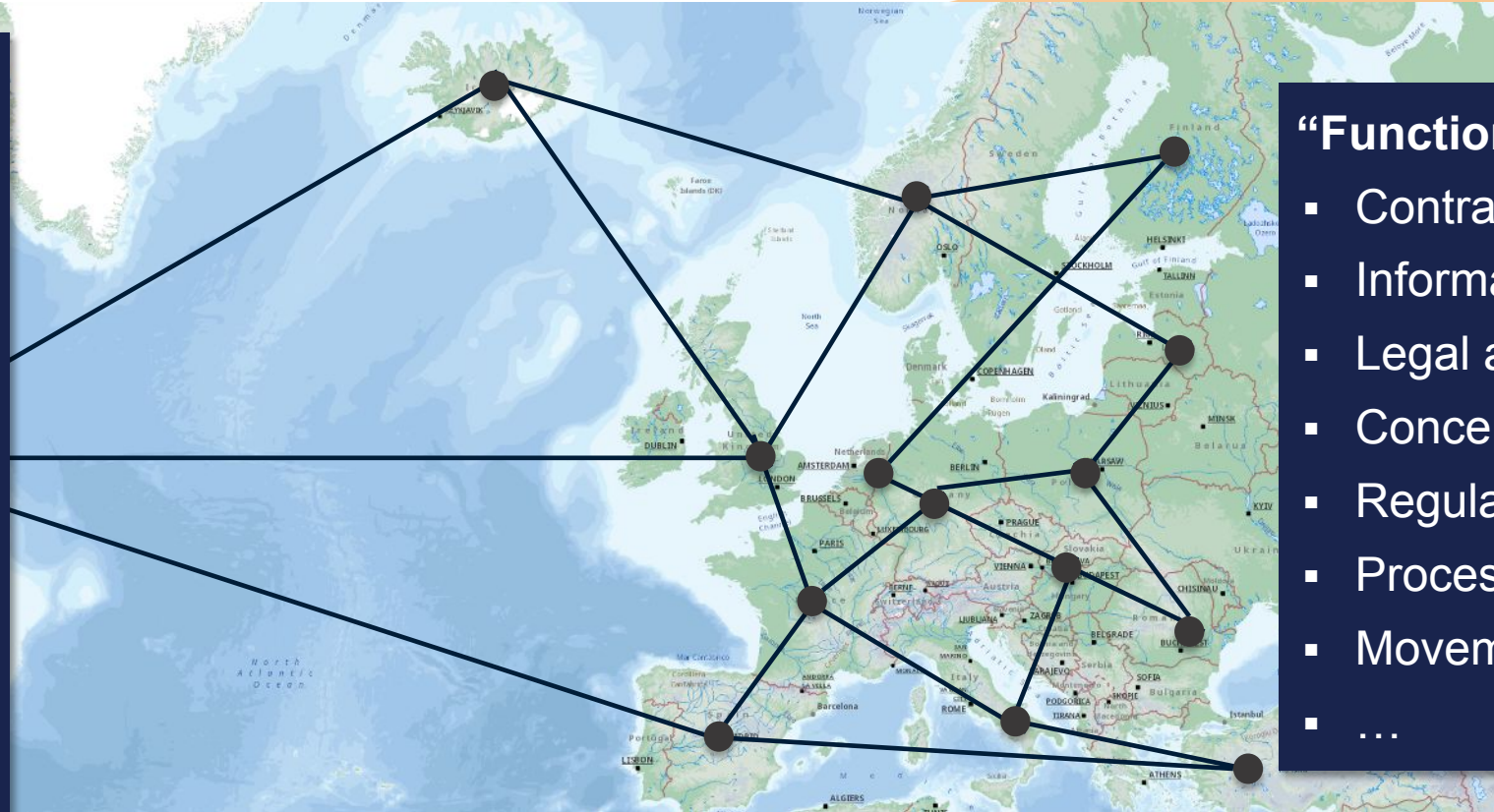
# Reinforcement and Sustainment Network (RSN)

**Disclaimer:**  
The points on the map are only illustrative

*Preparing the theatre with a two-layered approach...*

## “Physical Elements”:

- Roads & CSCs,
- Railways & Railheads,
- Air- and Seaports,
- Seaways,
- Storage Installations,
- Military Mobility Areas,
- Pipelines,
- Force Protection,
- ...



## “Functional Elements”:

- Contracts
- Information
- Legal arrangements
- Concepts (FP, Med...)
- Regulations
- Processes
- Movement Tracking
- ...

*... to set the conditions for efficient Military Mobility.*

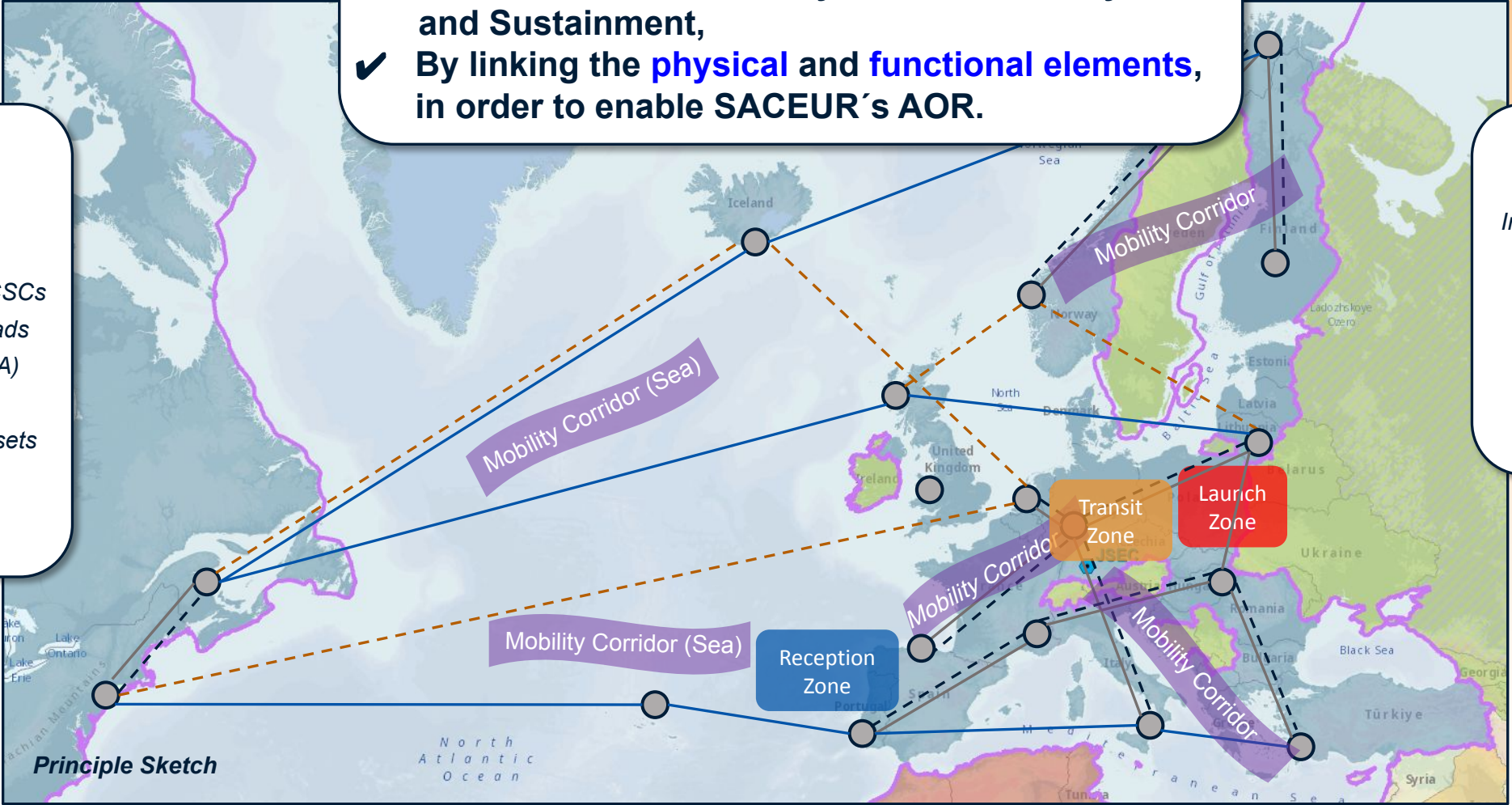
# Physical and Functional Development

**Disclaimer:**  
The points on the map are only illustrative

- ✓ **SACEUR Area of Responsibility-wide strategic construct,**
- ✓ **360 degrees perspective,**
- ✓ **sets conditions for timely and efficient RbyFo and Sustainment,**
- ✓ **By linking the *physical* and *functional* elements, in order to enable SACEUR's AOR.**

- Physical**
- Airports
  - Seaports
  - Railheads
  - Roads & Bridges & CSCs
  - Railheads & Railroads
  - Areas (MA, ISB, SA)
  - Hospitals
  - Force Protection Assets
  - Storage
  - Pipelines
  - .....

- Functional**
- Border Regulations
  - Infrastructure Alignment
  - Information Exchange
  - Asset Coordination
  - HNS Agreements
  - Force Protection
  - Movement Tracking
  - .....



- Sea Lane
- Major Road
- - - Flight Route
- - - Rail Line



# What inhibits Military Movements in Europe?

Highly complex border crossing regulations and processes

Inefficient information exchange systems

Coordination and availability movement assets

Lack of alignment on cross-border infrastructure development

Alignment between NATO requirements and EU resources

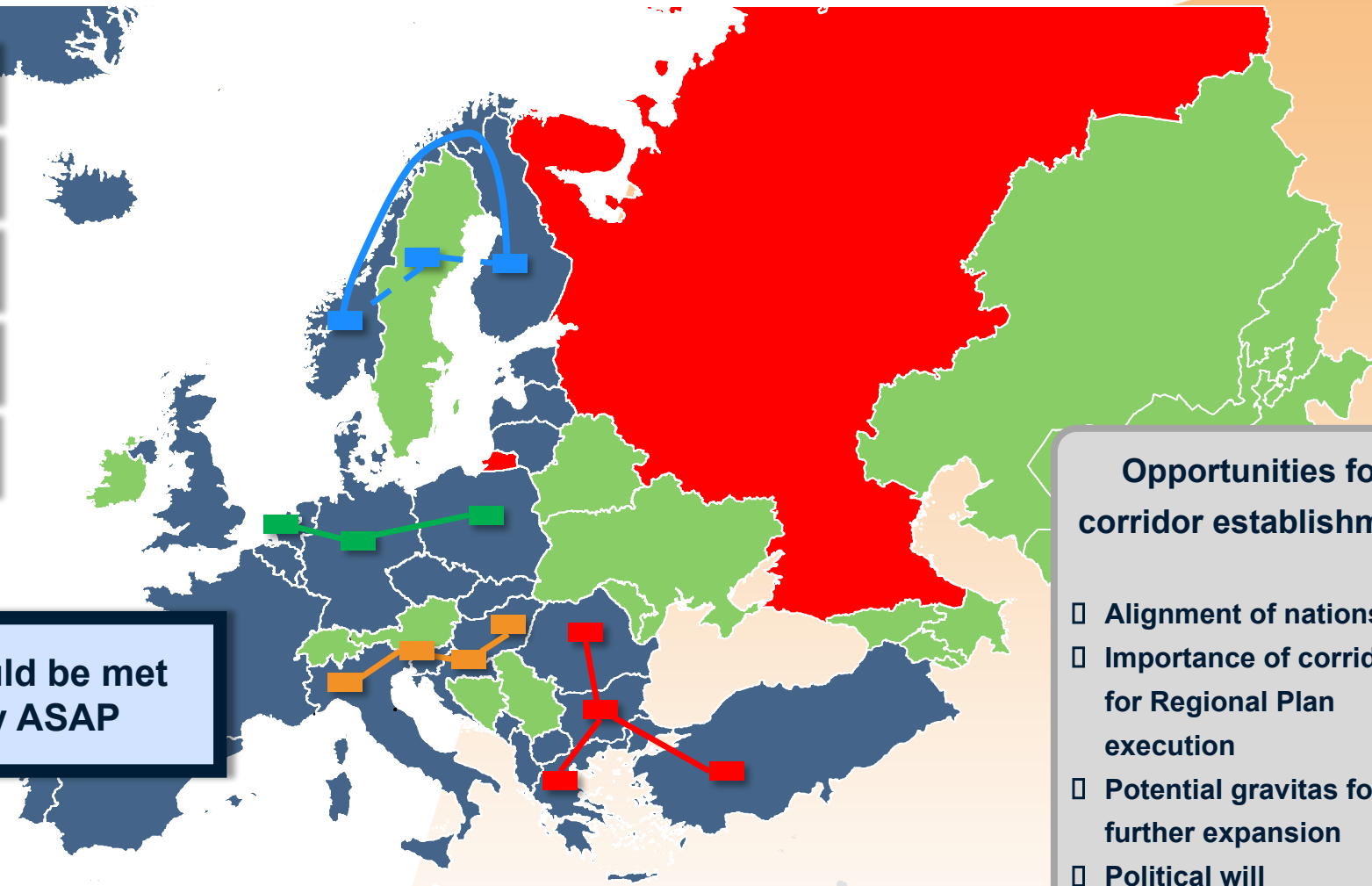


**Nucleus nations agree to a set of processes, rules and regulations for a harmonized and scalable corridor under peacetime conditions**

# Corridor Development Timeline

- Netherlands – Germany – Poland**
- Türkiye – Bulgaria – Romania**
- Slovenia – Croatia – Hungary**
- Nordic Countries**
- Concurrently:  
Inclusion of willing nations**

**Requirements should be met  
comprehensively ASAP**



- Opportunities for  
corridor establishment**
- ☐ Alignment of nations
  - ☐ Importance of corridor  
for Regional Plan  
execution
  - ☐ Potential gravitas for  
further expansion
  - ☐ Political will



# Overall Agenda

**1. JSEC at a glance**

**2. RSN and Corridor Development**

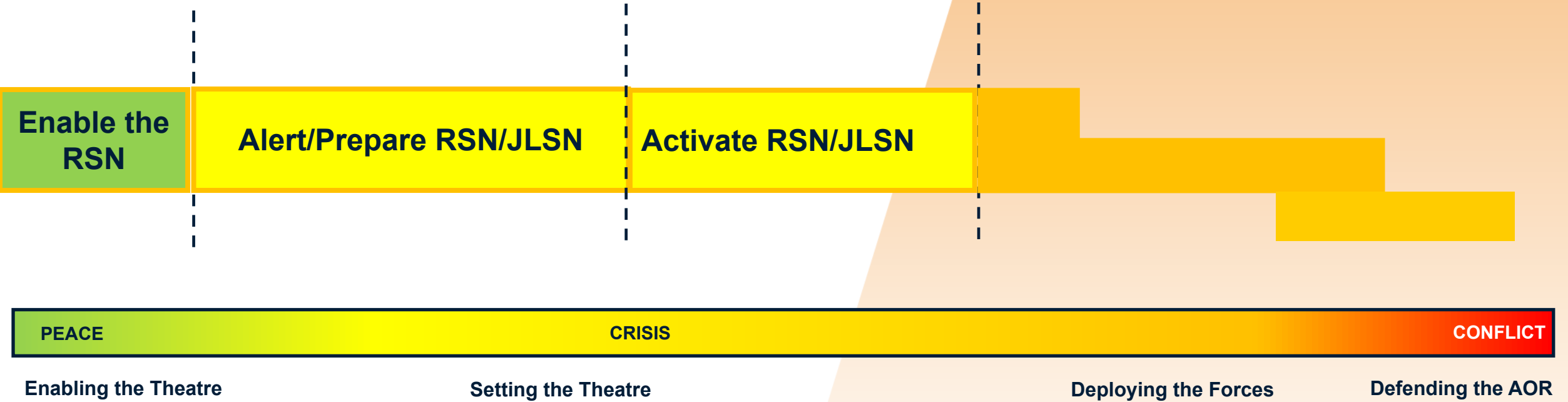
**3. RSN Activation**

**4. CRSP**

# COMMANDER'S INTENT

- 1 - An Enabled RSN prepared early in the crisis**
- 2 - A clear plan for reinforcement by forces and sustainment flow**
- 3 - Co-ordination of reinforcement and sustainment flow**
- 4 - Clear delineation between the JSEC and JFCs**
- 5 - COM JSEC's role as the 'Functional Advisor for Enablement at the Operational Level'**

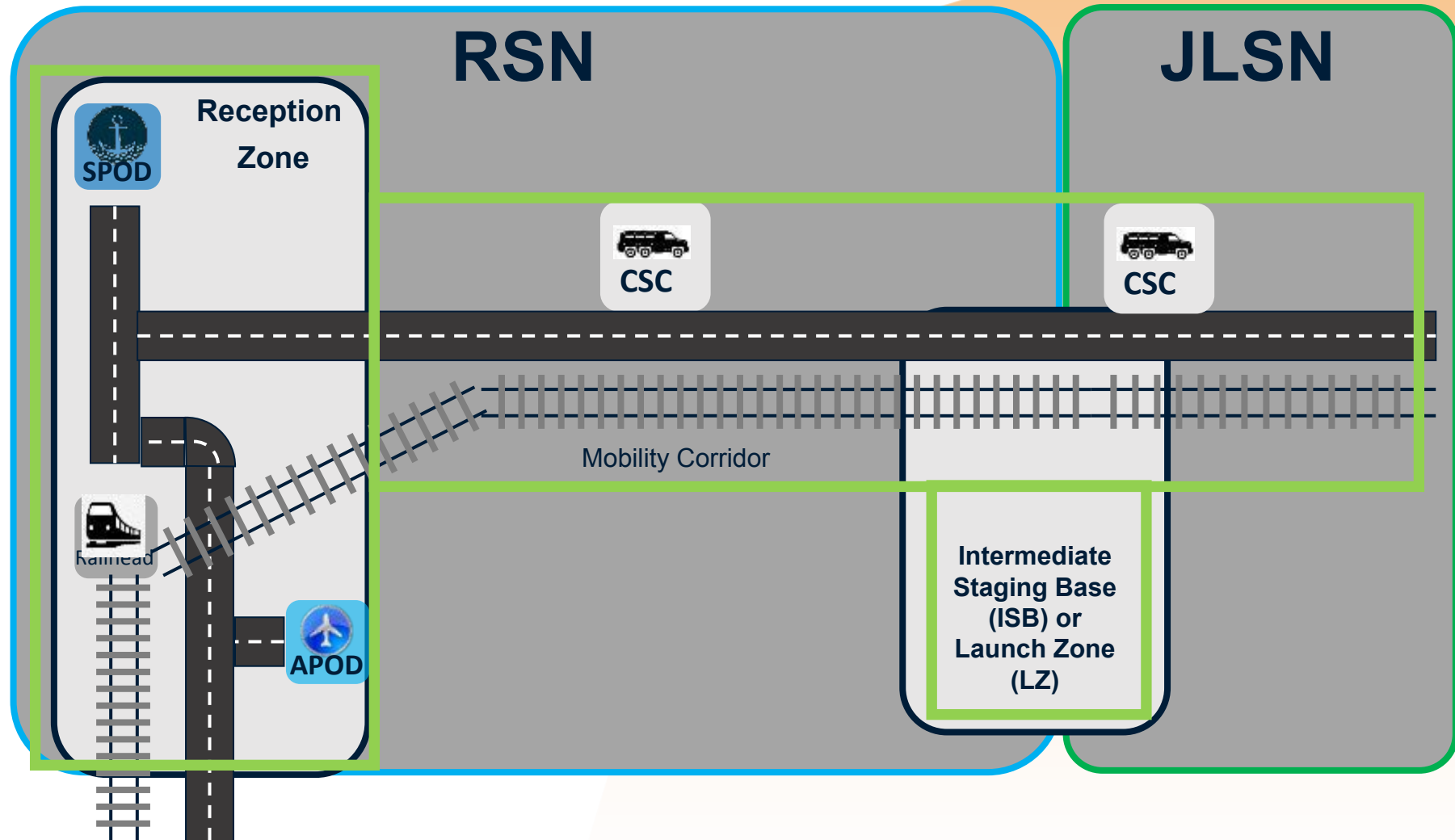
# RSN/JLSN ACTIVATION – OVERVIEW\*



# An Enabled RSN

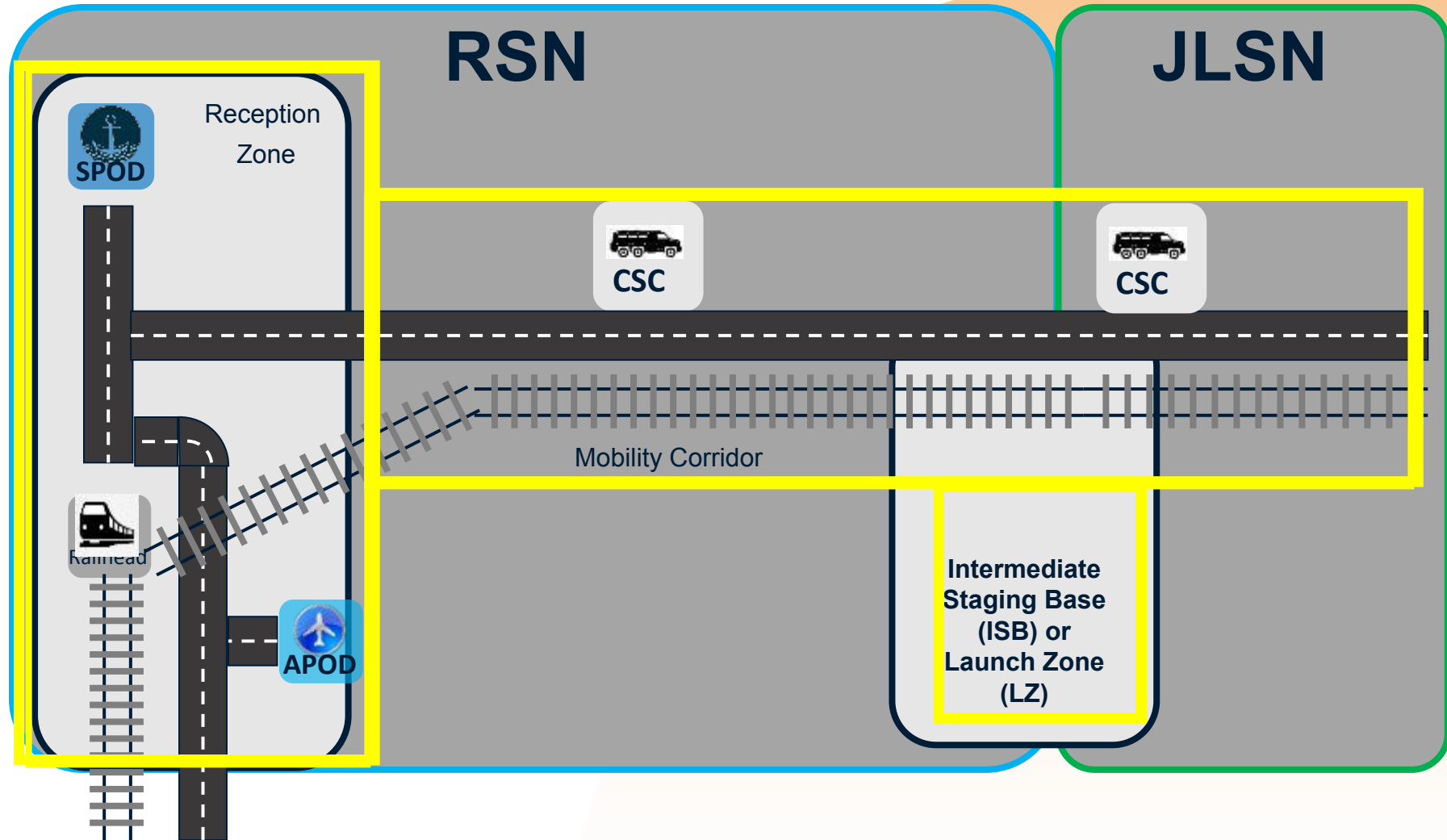
## Enabled RSN:

- Peacetime development
- Physical elements (Infra) identified and agreed with Nations
- Enablers arranged or contracted but not necessarily in place
- Shortfalls in infra or enablers mitigated or risk understood
- Endstate: RSN enabled and ready to be activated



# An Activated RSN – Theatre is prepared

- RSN Activated:**
- Access to infra
  - Mil and Civ enablers in place
  - Services available, contracts activated
  - Customs clearance waived?
  - Endstate: *RSN Activated and ready for force flow*

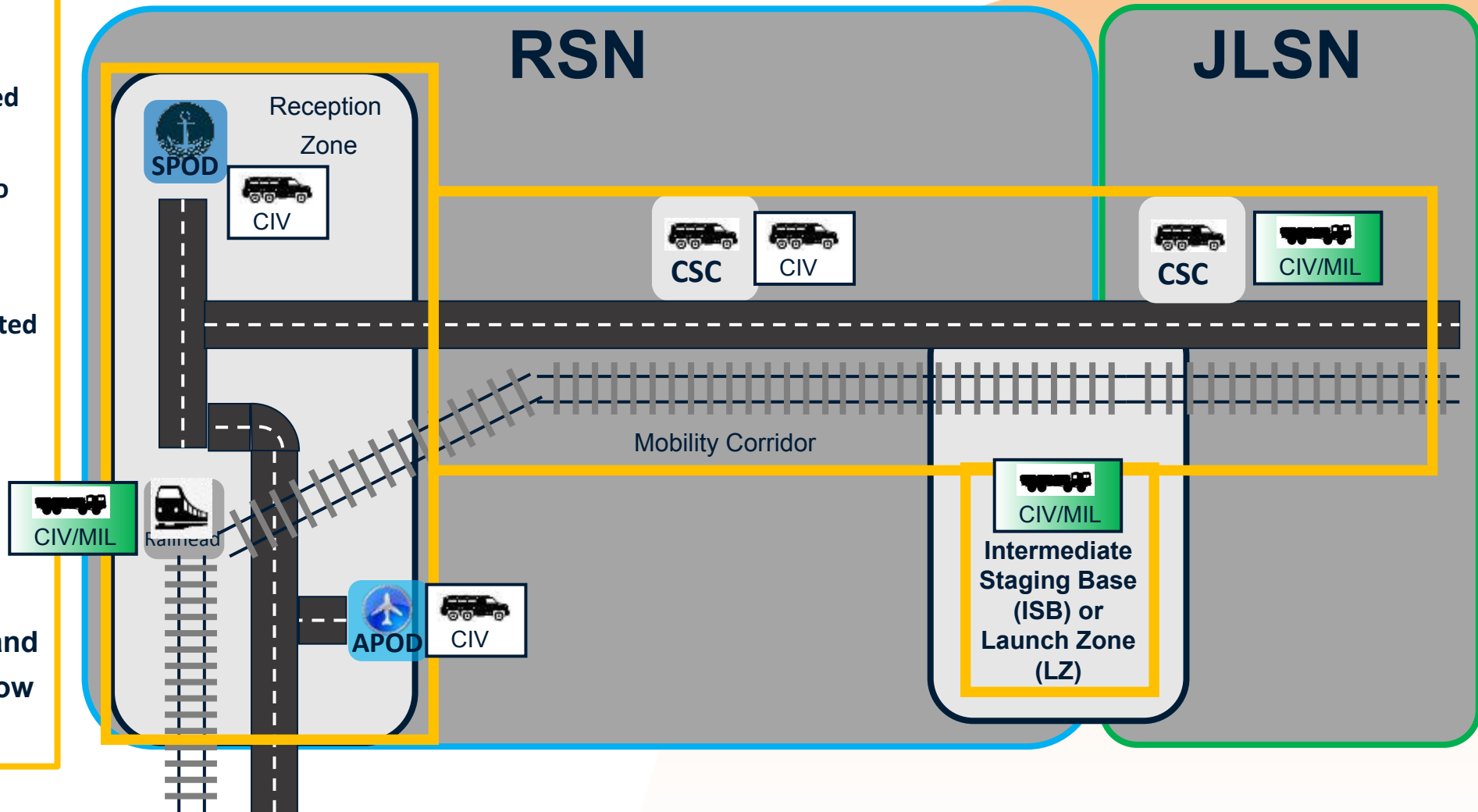




# RSN IN OPERATION

## RSN in operation:

- Ships being offloaded in SPODs
- Personnel flown into APODs
- Convoys traveling along roads, supported by CSC
- Tracked vehicles moving by rail.
- Convoy Support Centres in place
- Endstate: Force and the Sustainment flow managed.



# Overall Agenda

**1. JSEC at a glance**

**2. RSN and Corridor Development**

**3. RSN Activation, R&S Plans and iDEA**

**4. CRSP**

# JSEC's CRSP

## Consolidated Reinforcement and Sustainment Picture



- The Consolidated Reinforcement and Sustainment Picture (CRSP) is a tool that reports NATO's capability and capacity to deploy and sustain forces through SACEUR's AOR.
- It is formed from the summary of the Recognised Pictures (RPs) submitted to JSEC relating to the RSN, Enablement, D, and S.

***In short: The CRSP is JSEC's tool that reports NATO's capability and capacity to deploy and sustain forces through SACEUR's AOR and hence is an integral part of ACO's COP***

Recognised Pictures become Recognised Pictures which form the CRSP and will be disseminated throughout the ACO, informing SA and supporting decision making.

# JSEC's CRSP

in the context of NATO's AOR-wide COP

Regional Dimension

Domain Dimension



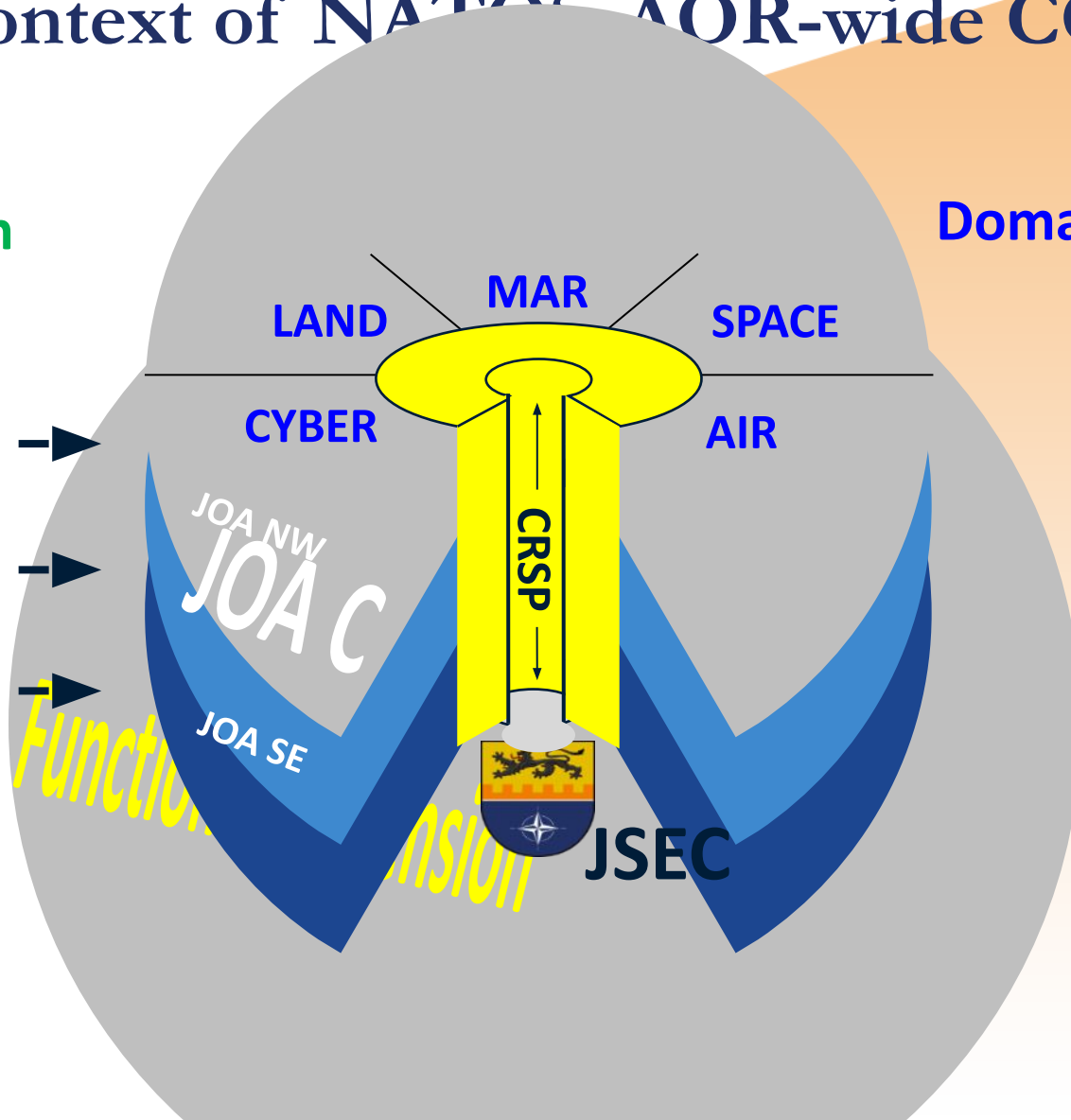
JFCNF



JFCBS



JFCNP





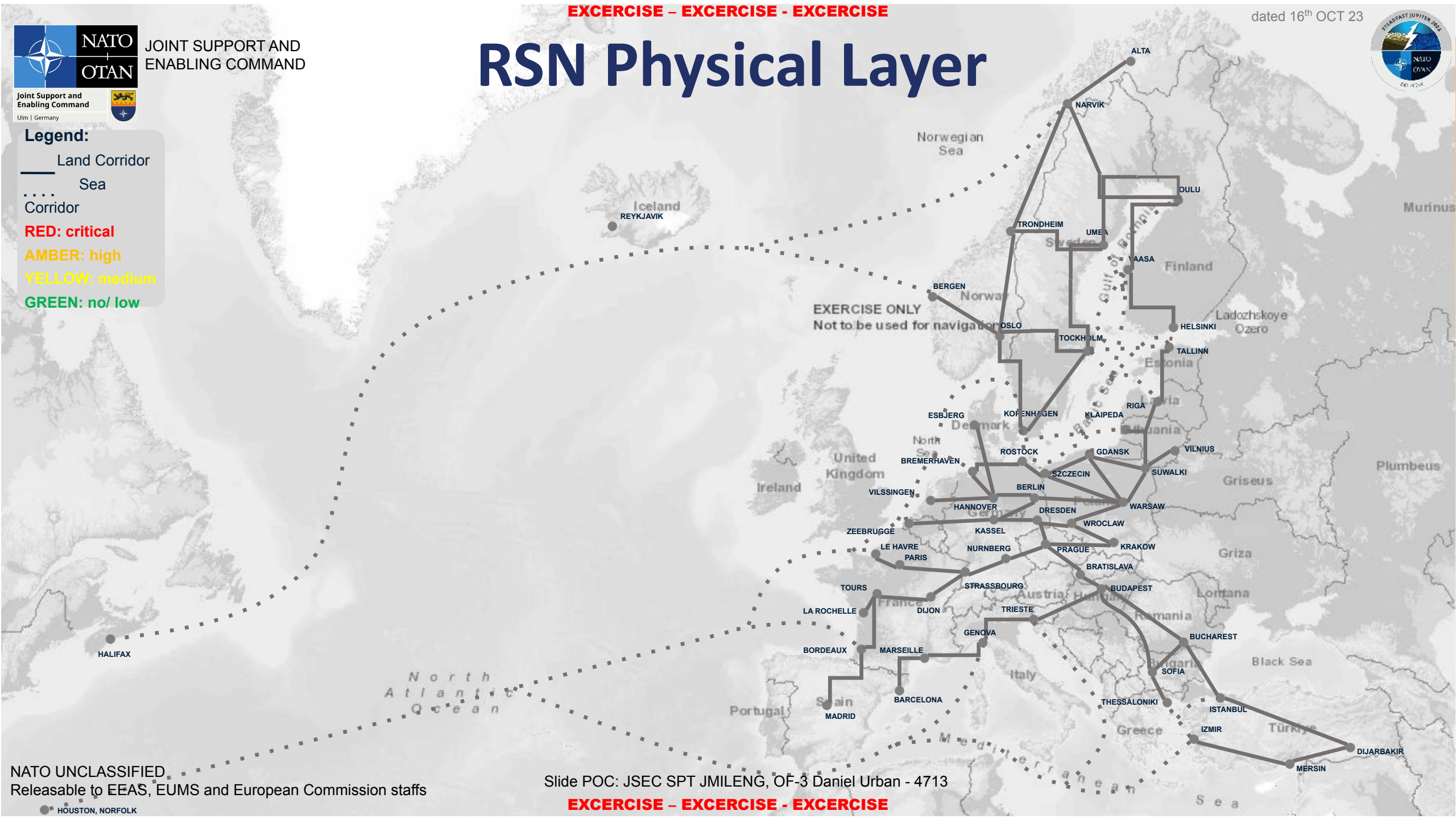
JOINT SUPPORT AND ENABLING COMMAND



Legend:

- Land Corridor
- Sea Corridor
- RED: critical
- AMBER: high
- YELLOW: medium
- GREEN: no/ low

# RSN Physical Layer



EXERCISE ONLY  
Not to be used for navigation





# Questions?

