

SWEDISH SIGNATURE MANAGEMENT STRATEGY



Swedish approach signature management and deception

Hide the true.

Highlight the false on order.

And give the impression that:



You still remain where you were.

You are weak where you are strong.

You are strong where you are weak.



THE MILITARY PROBLEM

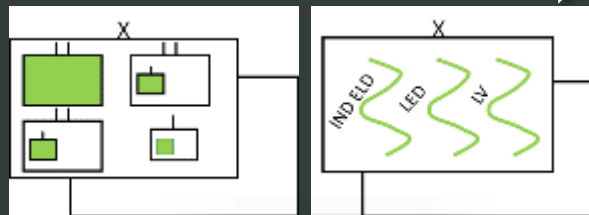




SHORT TERM IMMEDIATE ACTIONS



PRIORITY!



DOCTRINE /KNOWLEDGE

FM 3-0
OPERATIONS



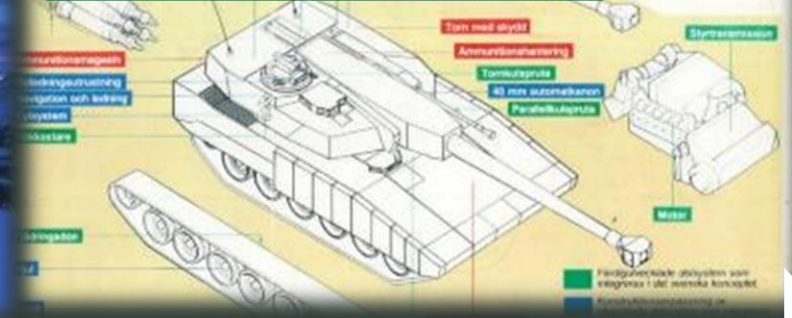
OCTOBER 2022

DISTRIBUTION RESTRICTIONS:
Approved for public release; distribution is unlimited.
This publication supersedes FM 3-0, dated 8 October 2017.
United States Government, US Army

ADAPTED CAMOFLAGUE SOLUTIONS



SIGNATURE MANAGEMENT IN EARLY PHASES



LONG TERM DEVELOPMENT



DECOYS

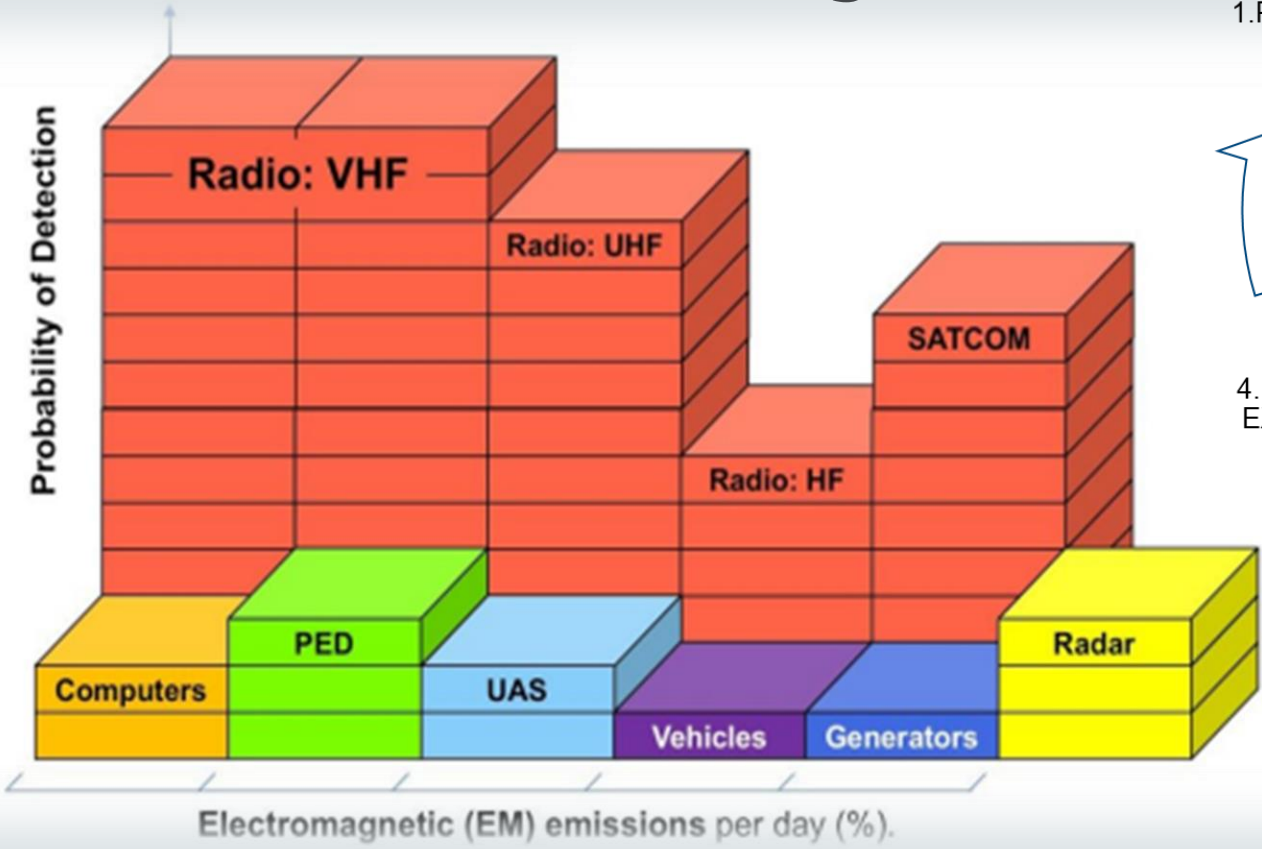


Basic survival methods

Do not become an easy target!



Unit signature

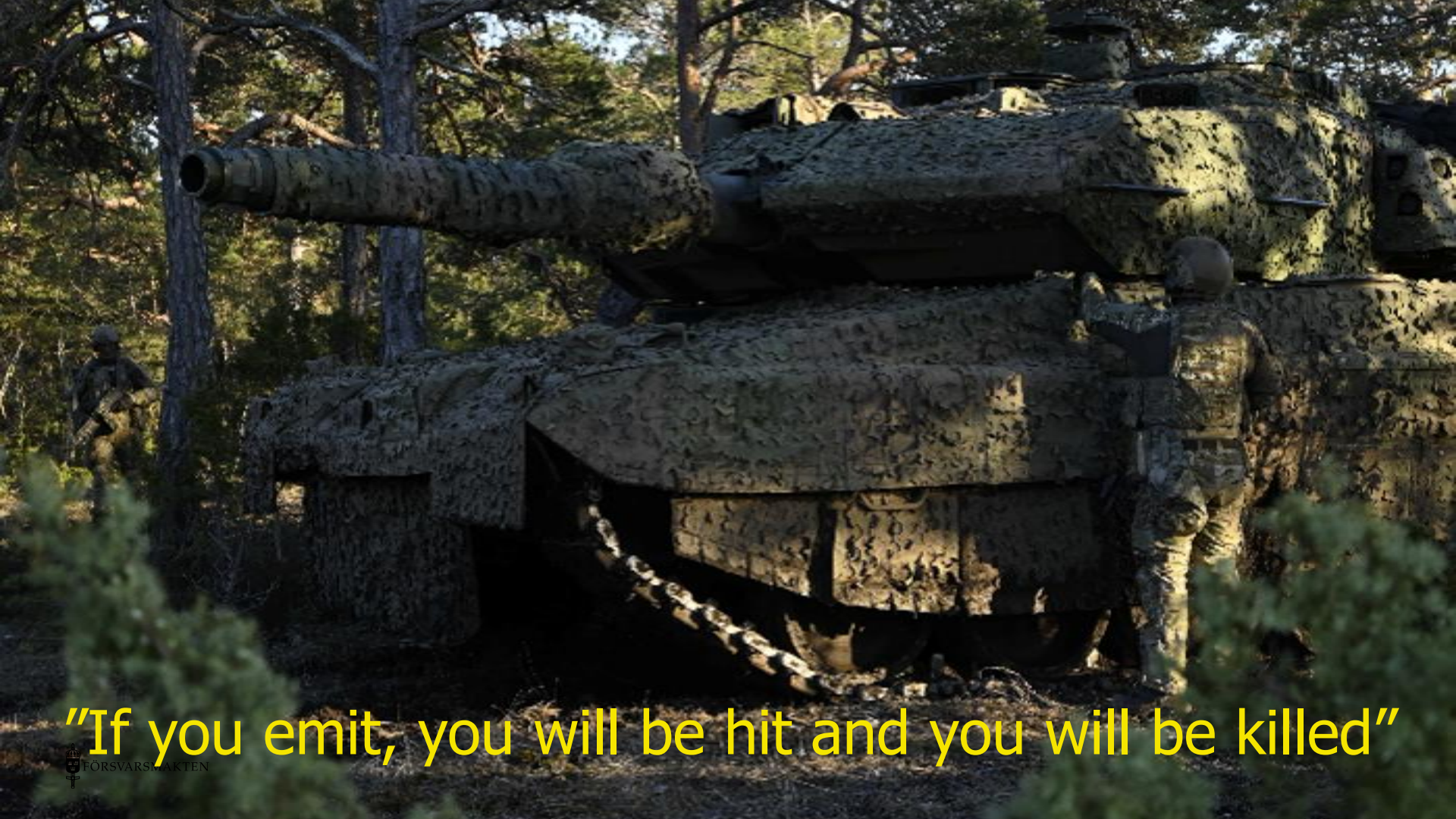


1. PREPARATION

2. MANOUVRE

4. ASSESMENT, EXPLOITATION

3. COMBAT FULL EMISSION



“If you emit, you will be hit and you will be killed”

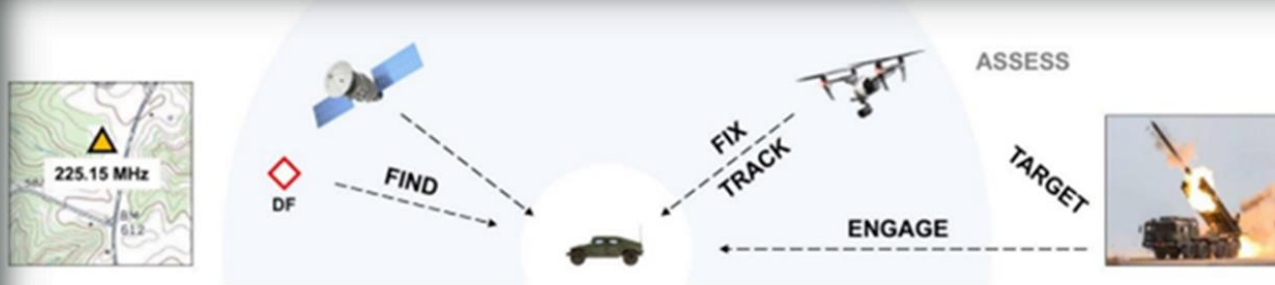
Sensor threat

The perspective of detection is mainly from above – more becoming a 360 degree threat.

The most common sensor: Optic

Most dangerous sensor: Thermal on all capable weapons

Increasing threat sensor: Radar

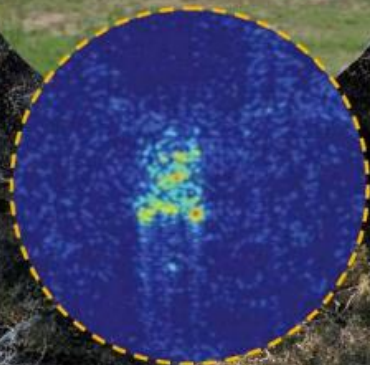


Modern integrated Fires Network: Satellite, aircraft, and UAS collectors augment adversary ground DF units to FIND, FIX, TRACK, TARGET, ENGAGE with precision fires and then ASSESS (F2T2EA).

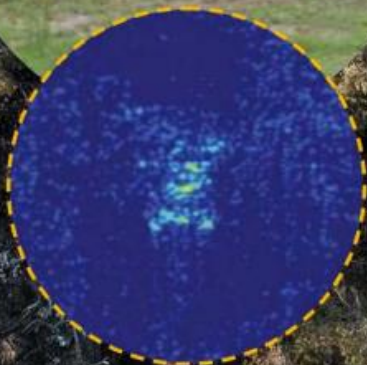


RR, Radar

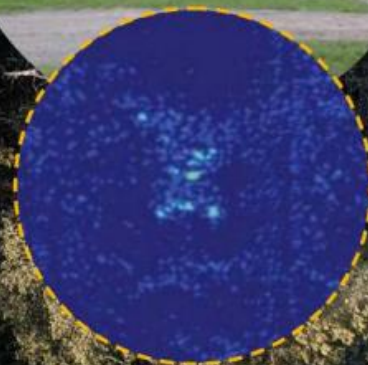
T72
uncamouflaged



T72 with
Barracuda MCS



T72 with Barracuda
MCS and ULCAS



Challenges



Signature management is built bottom up

Deception is built top down

- **Physical** means of deception; like tactical movement, activities, and decoys.
- **Technical** means of deception; like deliberate emissions.

Physical means of deception

Simple decoys

Energy-economic TIR
and Radar signature



Physical and Technical deception measures



Conclusions

SWEDISH APPROACH

SIGNATURE MANAGEMENT AND DECEPTION

HIDE THE TRUE.

HIGHLIGHT THE FALSE ON ORDER.

AND GIVE THE IMPRESSION THAT:

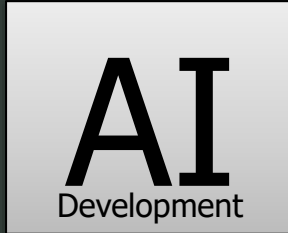
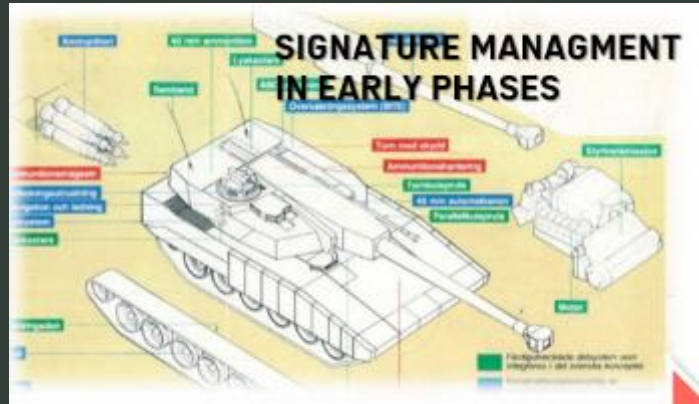


YOU STILL REMAIN WHERE YOU WERE.

YOU ARE WEAK WHERE YOU ARE STRONG.

YOU ARE STRONG WHERE YOU ARE WEAK.

© Forsvarsmakten



Concealment capabilities
VS
sensor development

Highlight in Training and
Exercise
CPX and Livex

Integrate Electronic
Warfare
In Signature management

Deception is the effect of camouflage and concealment



Questions