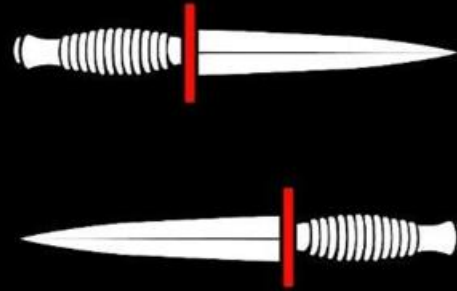




# Army Special Operations Brigade

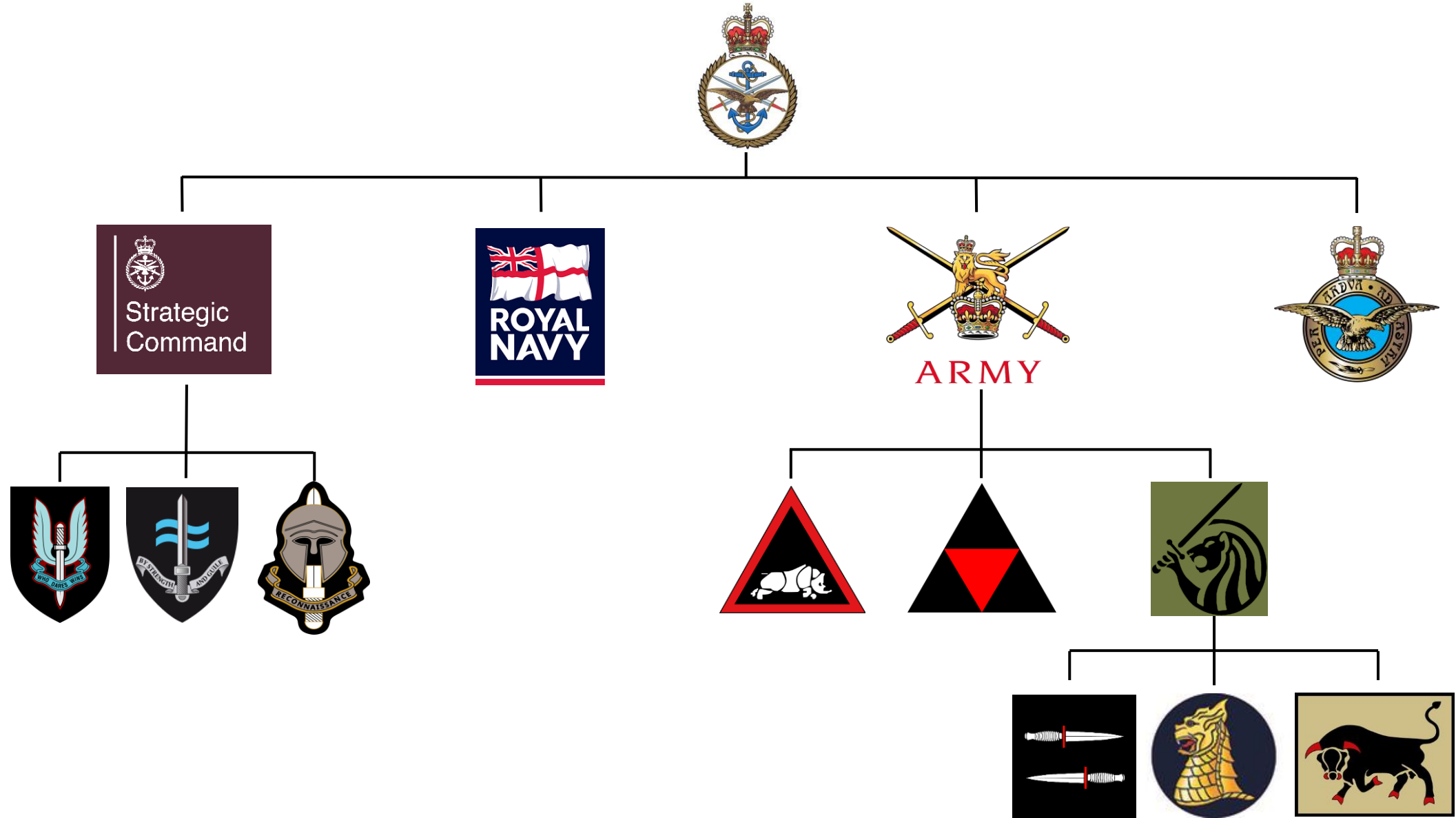


Colonel Tim Turner

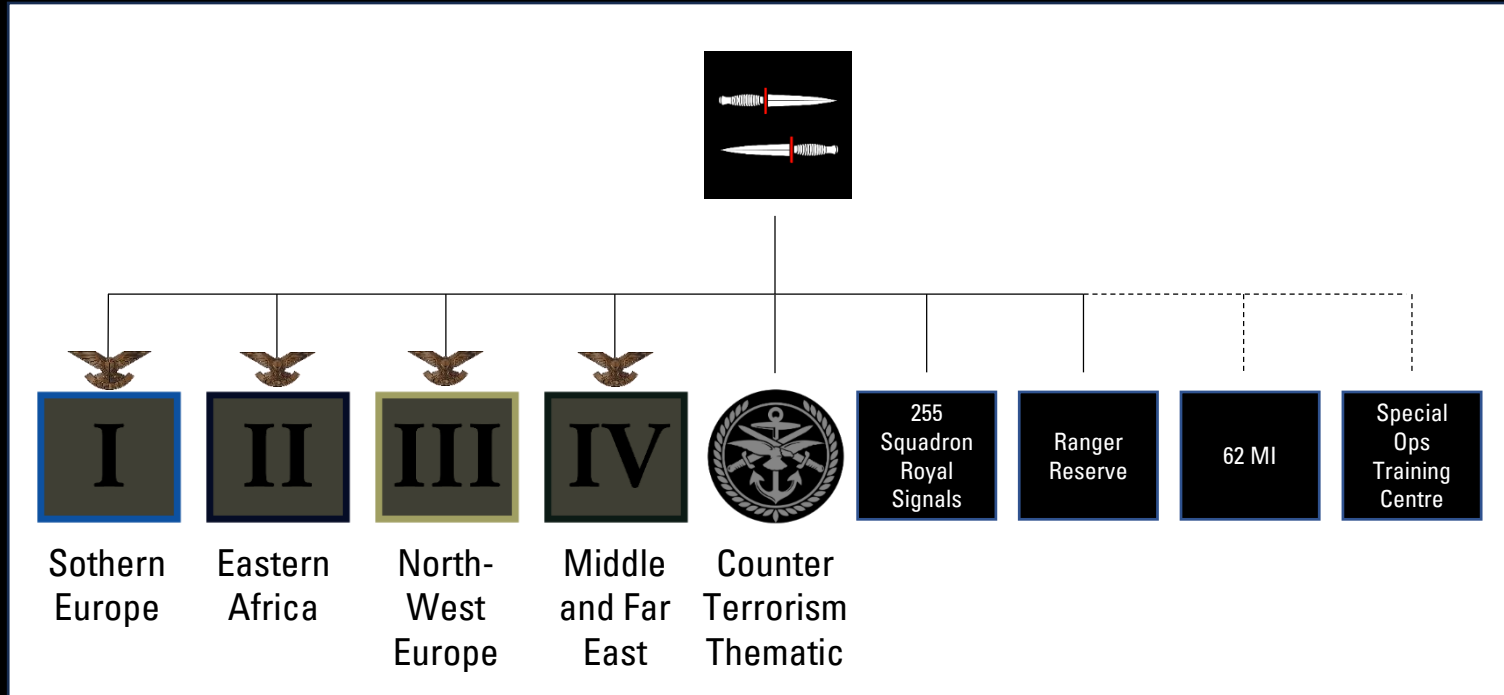
Deputy Commander



# ASOB – Ownership

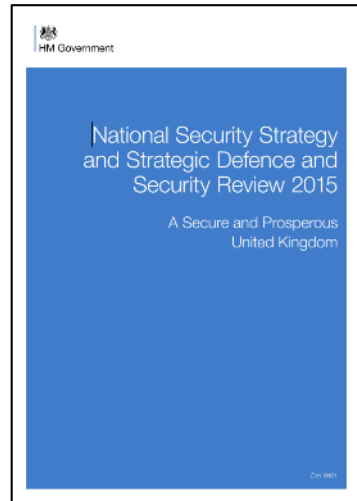


# ASOB – Form and Force Elements



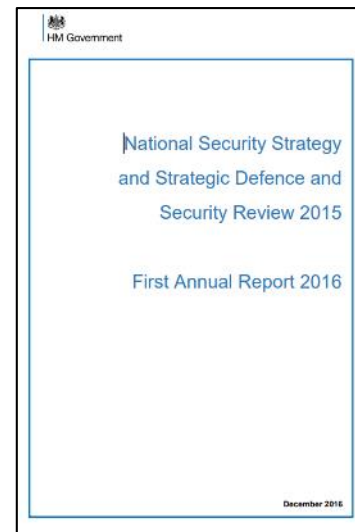
# The ASOB Story

2015



*“A number of infantry battalions reconfigured to provide an increased contribution to countering terrorism and building stability overseas. They will conduct defence engagement and capacity building, providing training, assistance, advice and mentoring to partners”*  
**SDSR 2015**

2016



2017



*“The idea of getting ahead of the bang by being persistently engaged overseas to understand and shape, deter and protect and to enhance our prosperity.”*  
**CGS, RUSI LWC 2017**



Creation of the SPEC INF

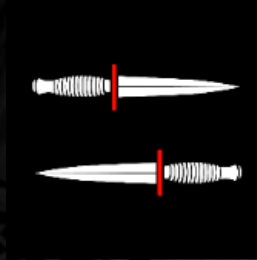


Three-way ORM

# The ASOB Story

---

# The ASOB Story



## Land SOF Ambition

- Enable partners
- Support NATO
- Support to UK Jnt Force





# Special Operations Targeting Hypothesis

Sensor.



Decider.

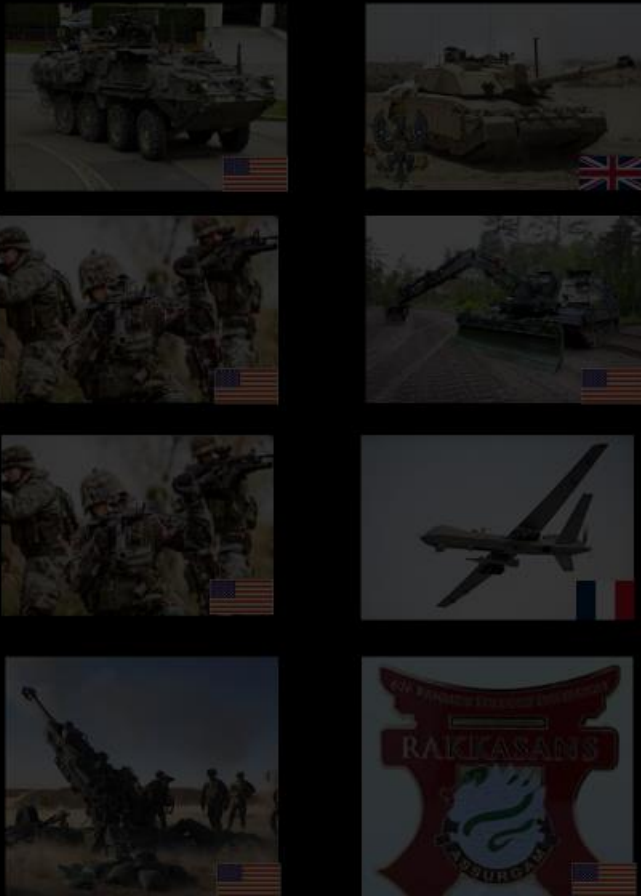


Effector.



# Testing - Ex COMBINED RESOLVE

Friendly Force – US ABCT



Enemy Force – 22 SOF + 40 Resistance





# Testing - Ex COMBINED RESOLVE

Friendly Force – US ABCT



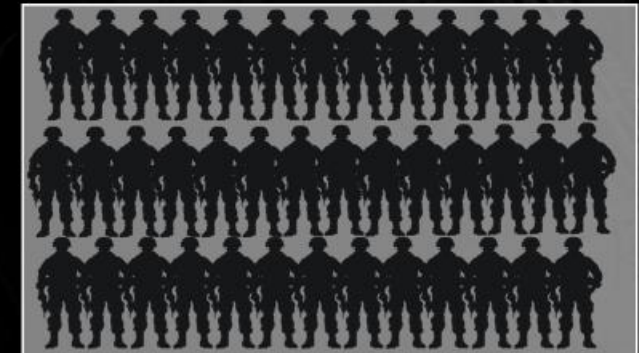
Enemy Force – 22 SOF + 40 Resistance



# Testing - Ex COMBINED RESOLVE

Friendly Force – US ABCT

Enemy Force – 22 SOF + 40 Resistance



# Testing - Ex COMBINED RESOLVE

Friendly Force – US ABCT

Enemy Force – 22 SOF + 40 Resistance



## Friendly Forces

## Enemy Forces

KIA - significant

Tanks/ Armd Veh Destroyed - significant

Engr/Logistic Assets destroyed - significant

KIA - 1

Detainees - 2





# SOF Truths

Humans are more important than hardware.

1

Quality is better than quantity.

2

Special Operations Forces cannot be mass produced.

3

Competent Special Operations Forces cannot be created after emergencies occur.

4

Most Special Operations require non-SOF assistance.

5



# Preparing Our People



Accelerate Learning



Training



Selection





# Selection and Training

Selection and initial training



LAND SPECIAL OPERATIONS TRAINING CENTRE



Skills training



Collective training and MST



# Selection and Training

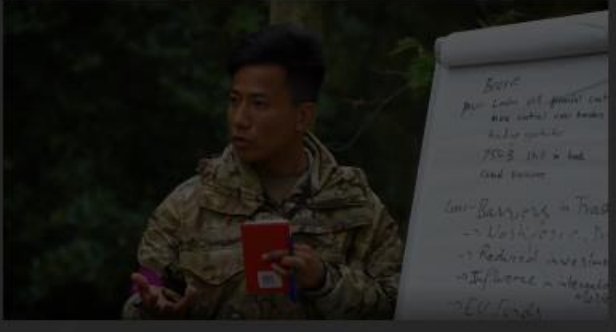
Selection and initial training



LAND SPECIAL OPERATIONS TRAINING CENTRE



Skills training



Collective training and MST





# Selection and Training

## Selection and initial training



LAND SPECIAL OPERATIONS TRAINING CENTRE



## Skills training



## Collective training and MST





# Selection and Training

Selection and initial training



LAND SPECIAL OPERATIONS TRAINING CENTRE



Skills training



Collective training and MST





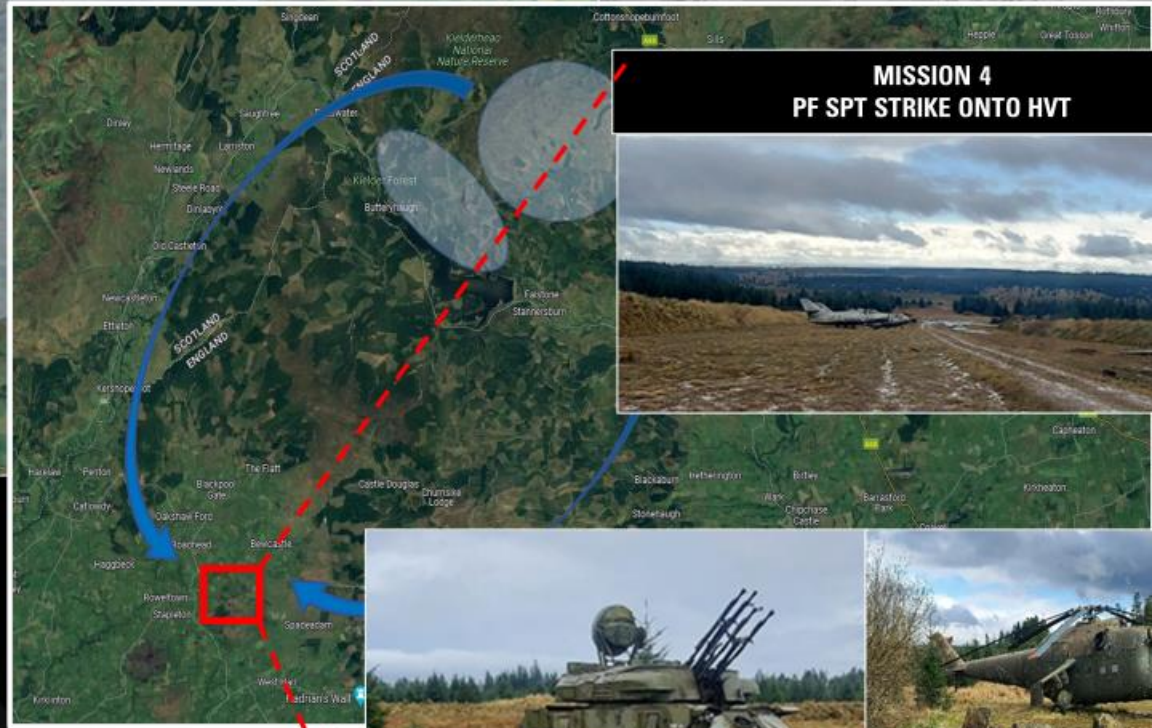
# APOLLO STORM



**MISSION 1**  
Insert to Kielder  
DISRUPT /  
STRIKE sensors



**MISSION 3**  
LINK UP with PF  
ENABLE air HPTL



**MISSION 4**  
PF SPT STRIKE ONTO HVT



**MISSION 2**  
COMPEL into KA





# Global Operations



23/24 Ops Headlines

- 495 deployments
- 56 countries





# Capability Development





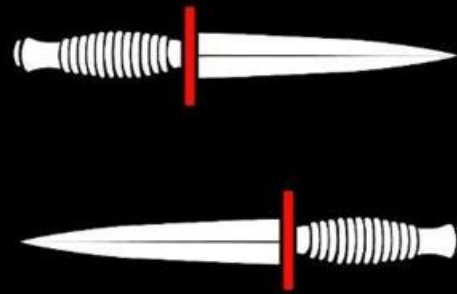
# Warfighting







# Army Special Operations Brigade



Colonel Tim Turner

Deputy Commander

