



# Synergies Between Military and Commercial Shipping

Combined Naval Event  
MAY 2023

CAPT Pat Thien  
Deputy Director

Surface and Mine Warfighting Development Center  
Mine Countermeasures Technical Division  
[patrick.c.thien.mil@us.navy.mil](mailto:patrick.c.thien.mil@us.navy.mil)

This Brief is:  
**UNCLASSIFIED**



UNCLASSIFIED

# Commercial and Military Deliveries

## Goods and Products



## Combat Power



**Different customers, but both require access to the commons**



**72%** of the world's surface are oceans ...  
**80%** (volume) and **70%** (value) of all transport is by sea ...

**2,800 +** Ports worldwide  
... **835** of those handle **99%** of the world trade

*"Whoever commands the trade of the world, commands the riches of the world and hence the world itself" Sir Walter Raleigh, 1554 - 1618*



**Mine Strike off VACAPES 1942**



**Suez Canal 2022**



**Mine Strike in Black Sea 2022**

**Black Sea premium insurance rates from 0.025 % prior to invasion to 1-5 % post invasion  
40 to 200 times as expensive to insure !**

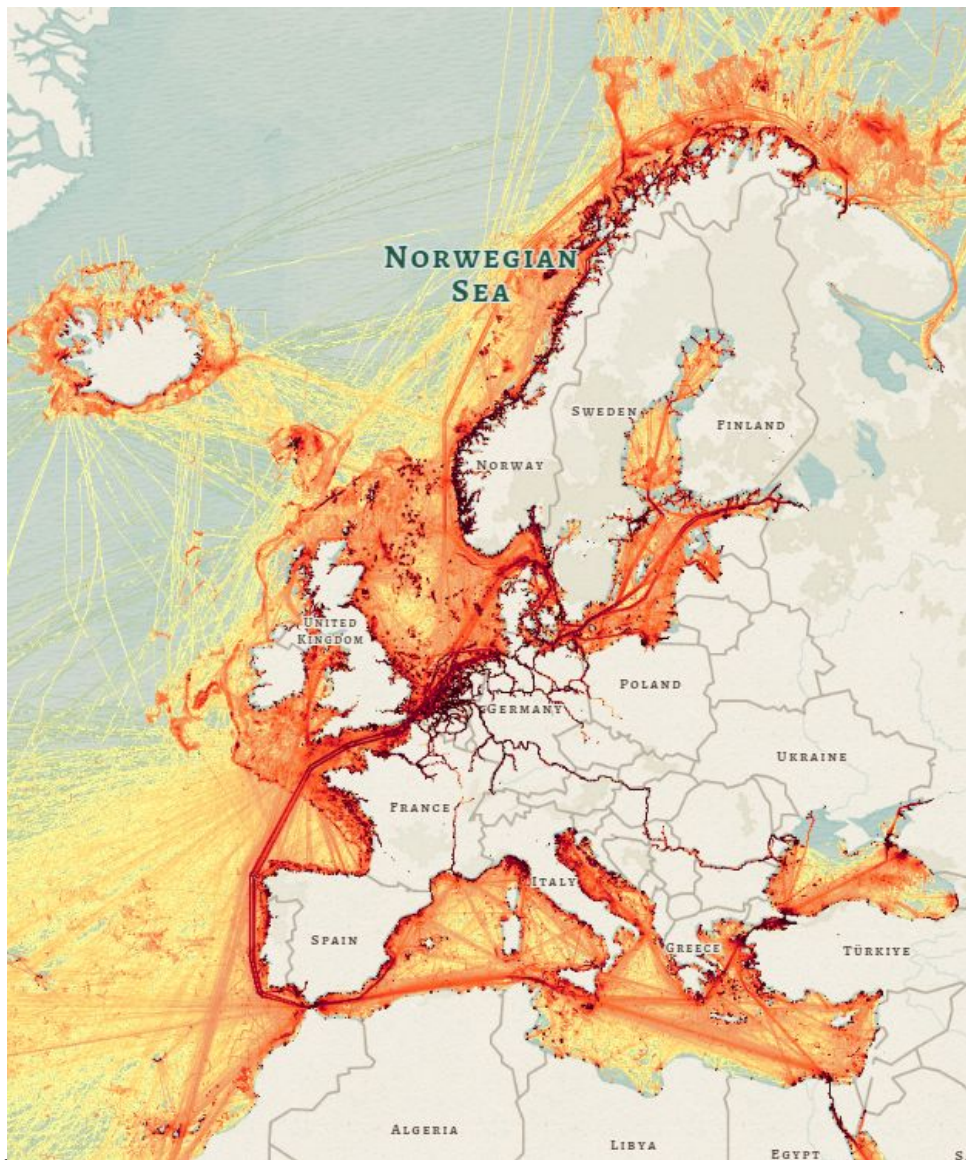


**Convoy near Iceland 1942**

**Delays have commercial and military consequences**

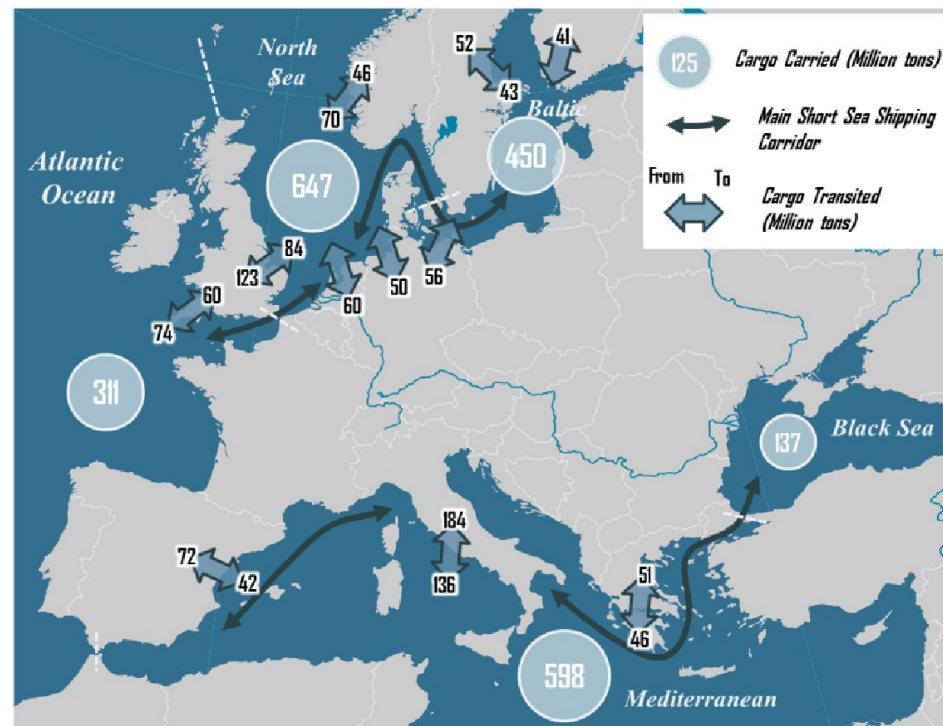


# Vulnerabilities in Europe



**AIS Data Showing Traffic Density for March 2023**

**Mine Inventory**  
Russia: 250,000





UNCLASSIFIED

# Vulnerabilities in the Middle East and Asia Pacific

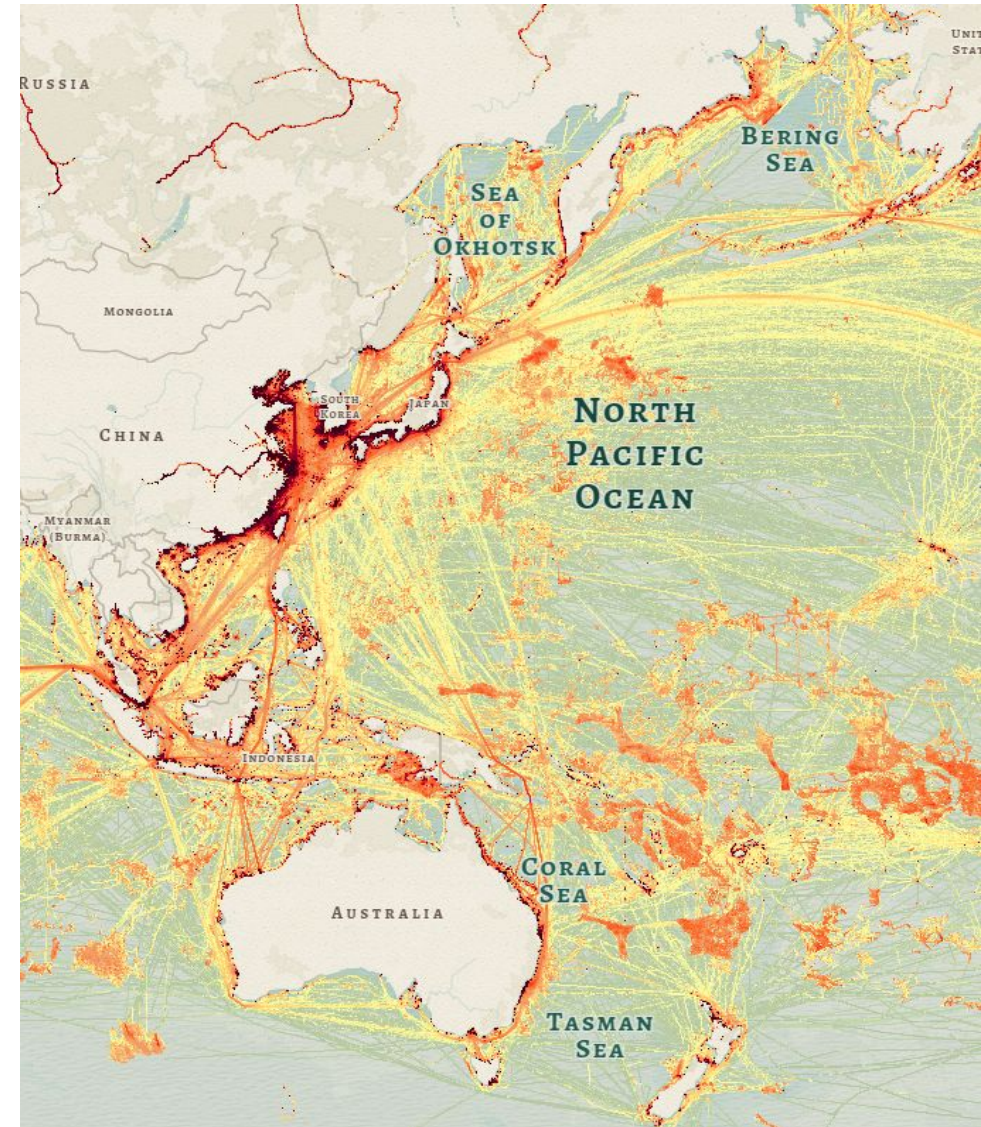
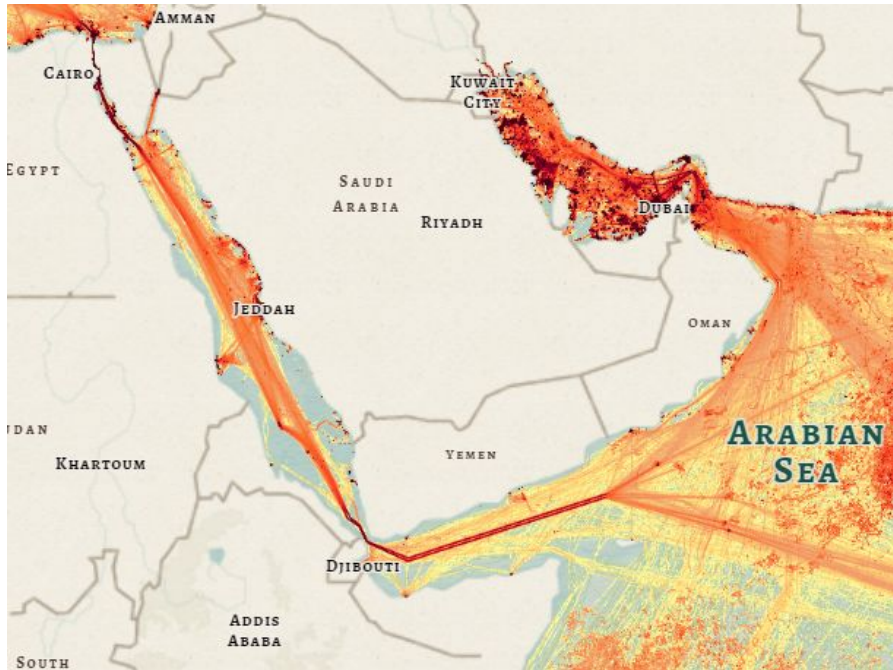
## Mine Inventory

Russia: 250,000

China: 100,000

North Korea: 50,000

Iran: 6,000



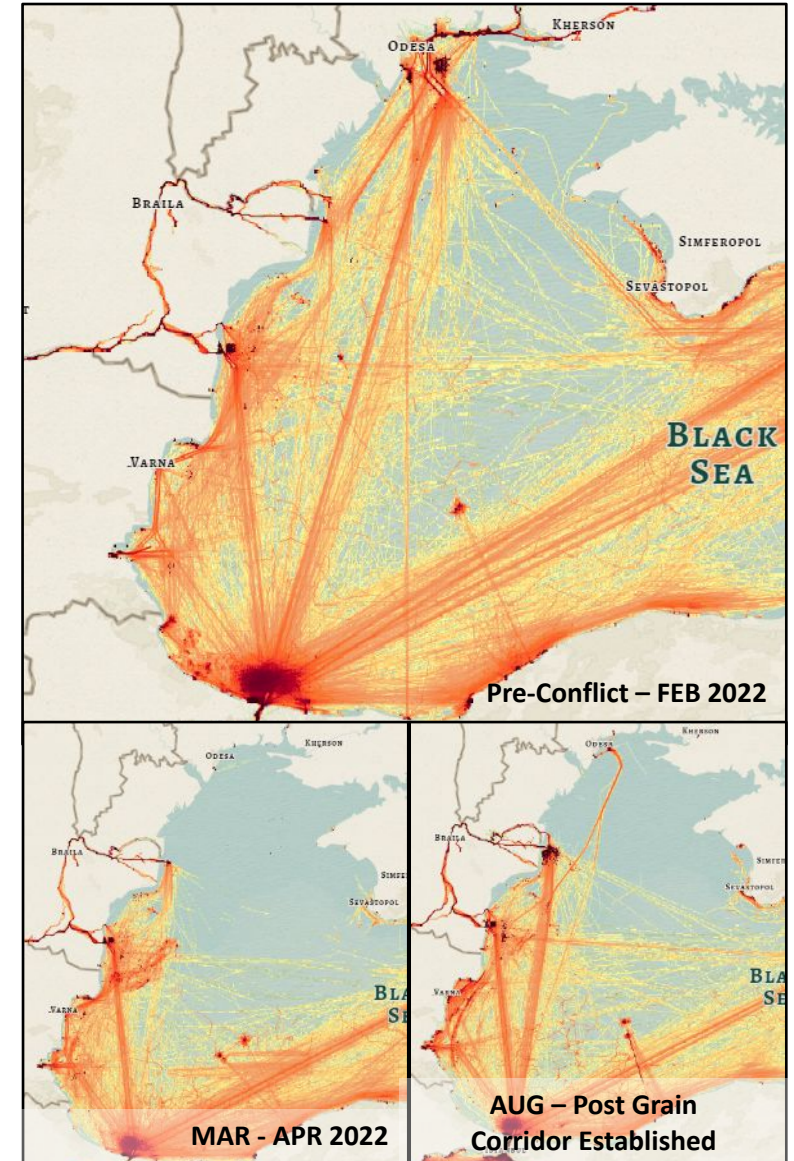
AIS Data Showing Traffic Density for March 2023



# Black Sea Shipping Impacted by Conflict



Mine Related Activity in the Western Black Sea



AIS Data Showing Impact to Shipping

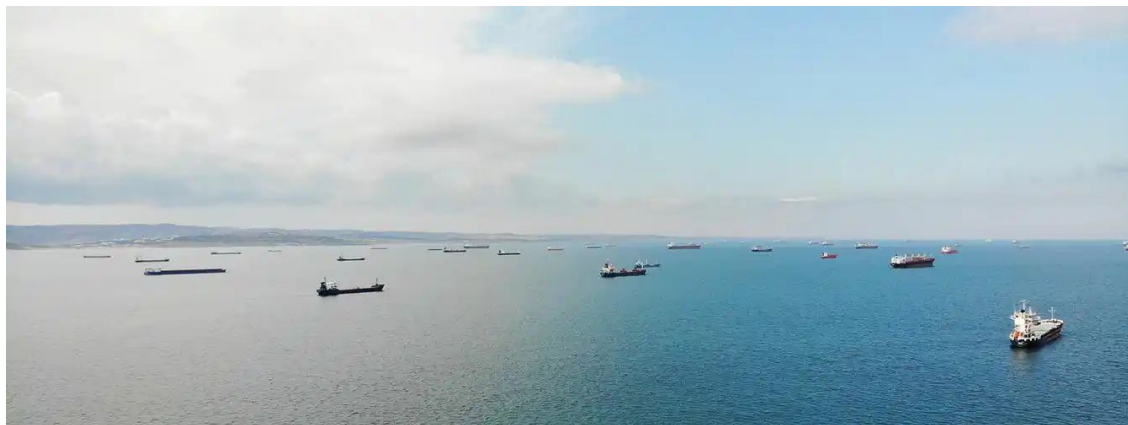
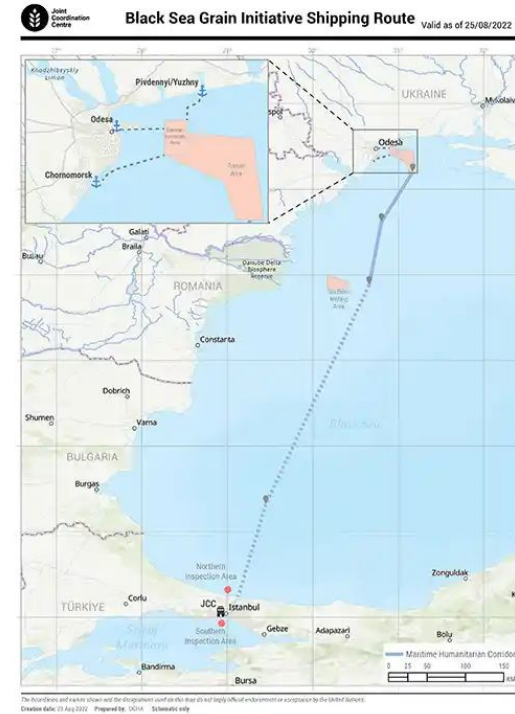


# Synergy: Black Sea Grain Initiative

As of 27 Mar 23:  
849 departures / 827 Arrivals  
25,888,435 tons shipped



Truck unloading corn in Ukraine



Grain Ships off Istanbul Feb 2023

Cooperation in time of conflict in order to move vital food products





# Where can we achieve synergy?



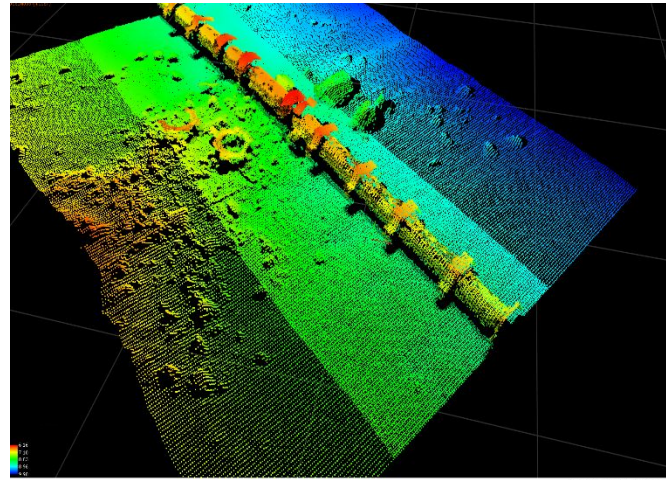
IMX 2013 Convoy



U/W ROV ops



Standing NATO MCMGRU-1



Pipeline sonar survey



Commercial survey vessel

Mine Countermeasures is 90 % a research project



## How do we...

- **Make MCM faster ?**

- In stride data transfer
- Automatic Target Recognition (ATR)
- Single Sortie Detect to Engage (DTE)
- Shorten the Post Mission Analysis (PMA) timeline

- **Make MCM forces more agile ?**

- Hosted on multiple platforms
- Improved Modularity - Agile, Flexible
- Scalable Capability / Capacity

- **Improve UUV/USV/ROV ?**

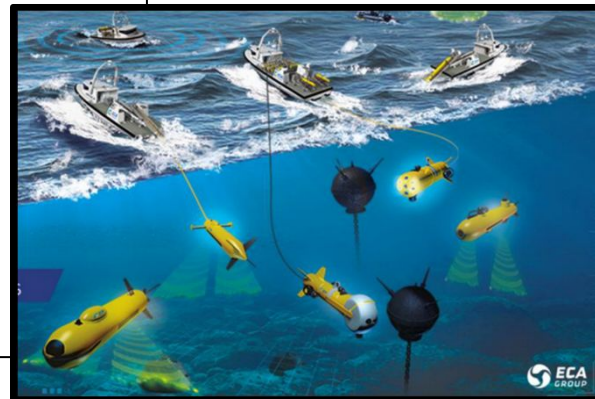
- Improved Sensors / Depths
- Reduced Signatures
- Networked
- Clandestine
- Endurance

- **Operate in Challenging Environments ?**

- Positioning, Navigation, Timing
- Comms Resilience
- Cold and hot weather
- Currents

- **Improve Interoperability?**

- Share information and knowledge
- True Common Operating Picture (COP)
- Integrate all P





***Change is the law of life. And those who look only to  
the past or present are certain to miss the future.  
John F. Kennedy***

UNCLASSIFIED