

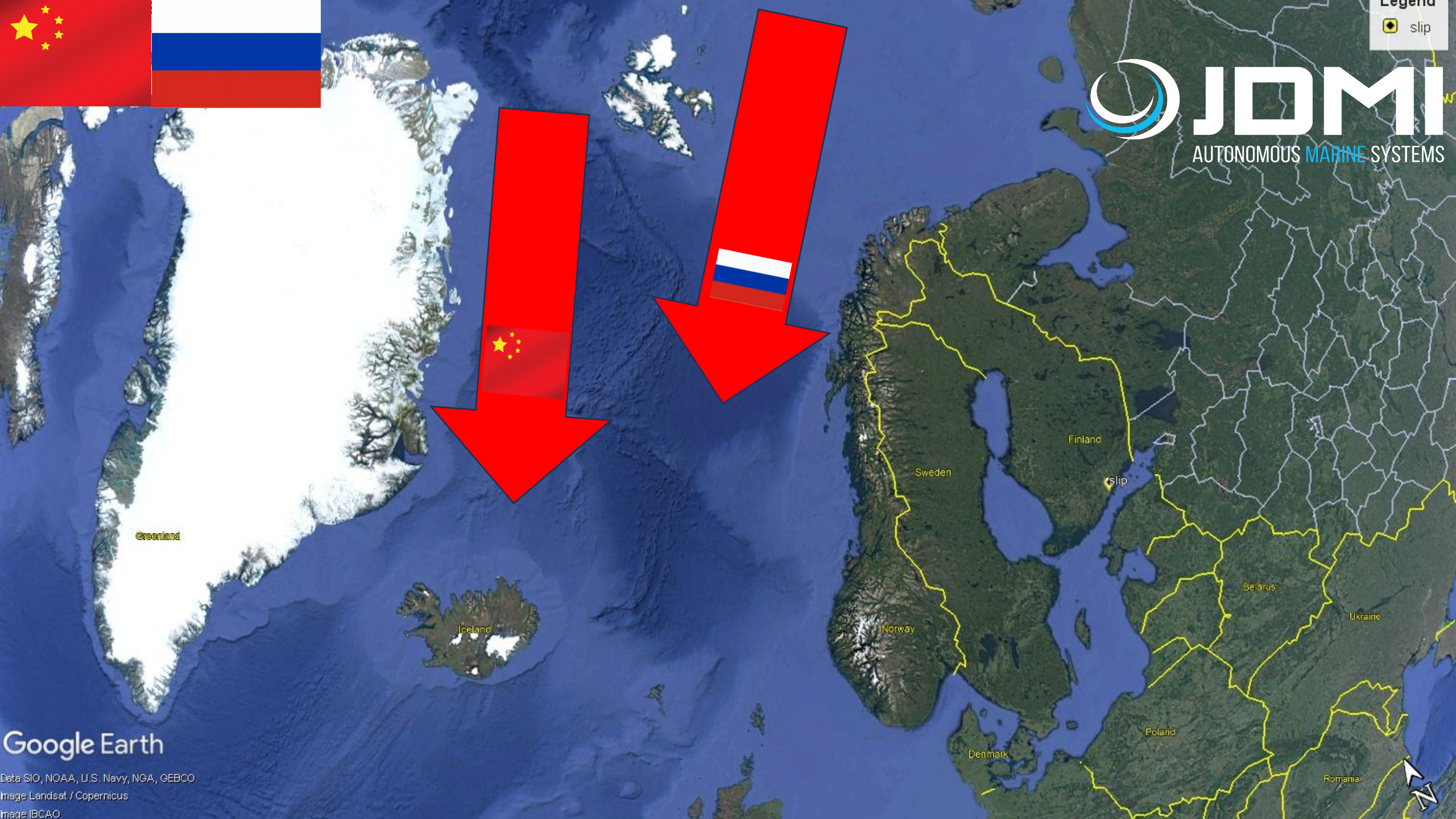
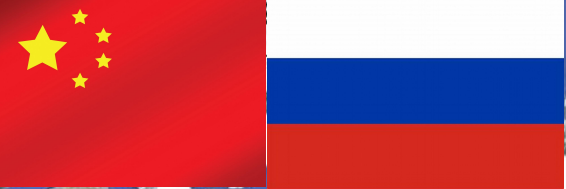
Maritime Strategies for Autonomy and the Future of Special Forces Deployment

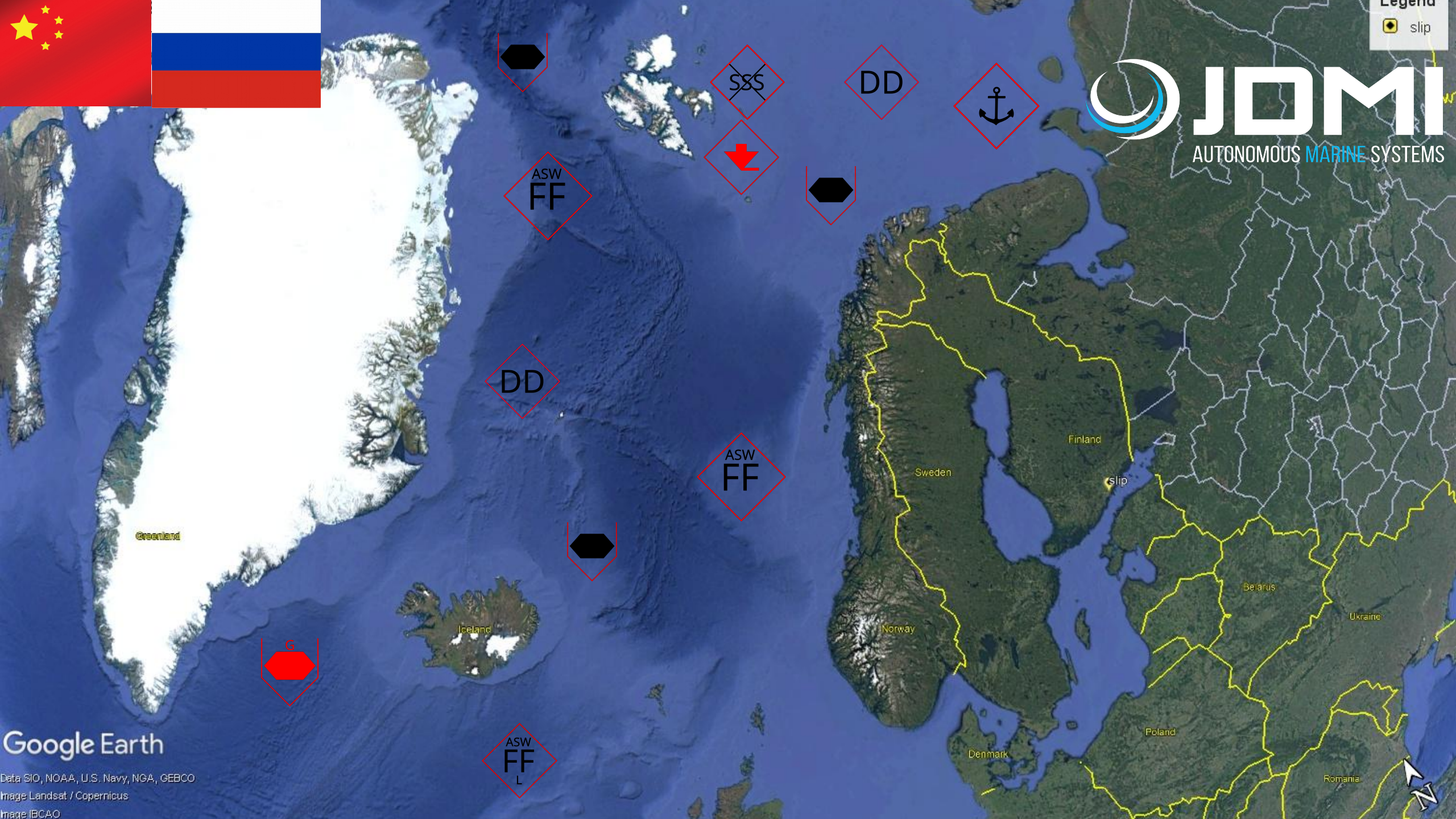
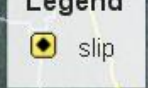
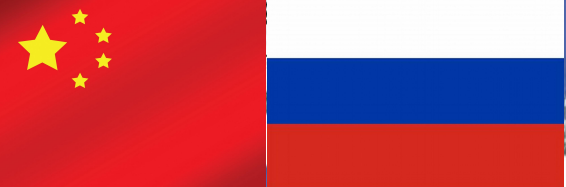


The Present



The Future



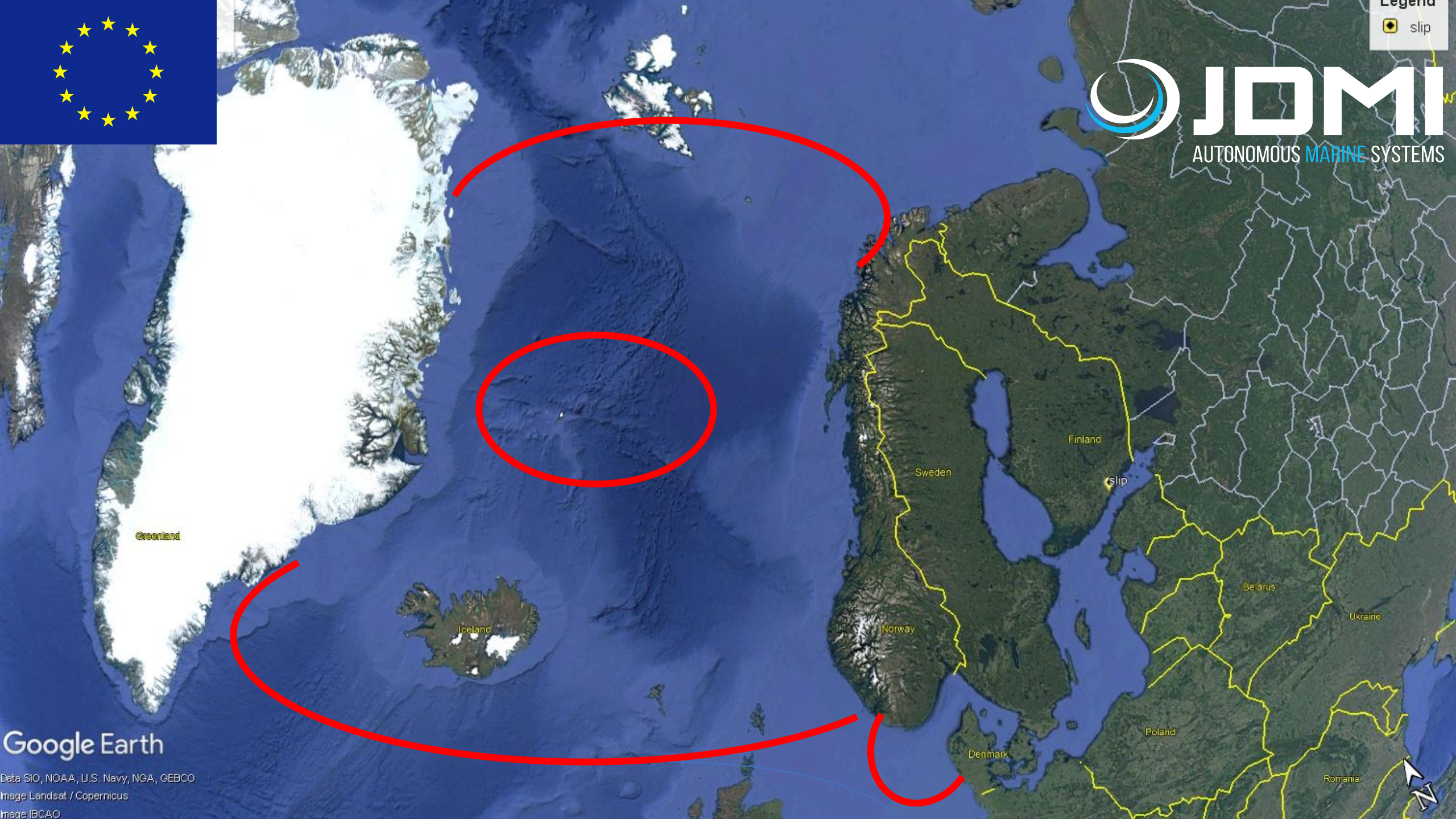


Google Earth

Data SIO, NOAA, U.S. Navy, NGA, GEBCO

Image Landsat / Copernicus

Image IBCAO

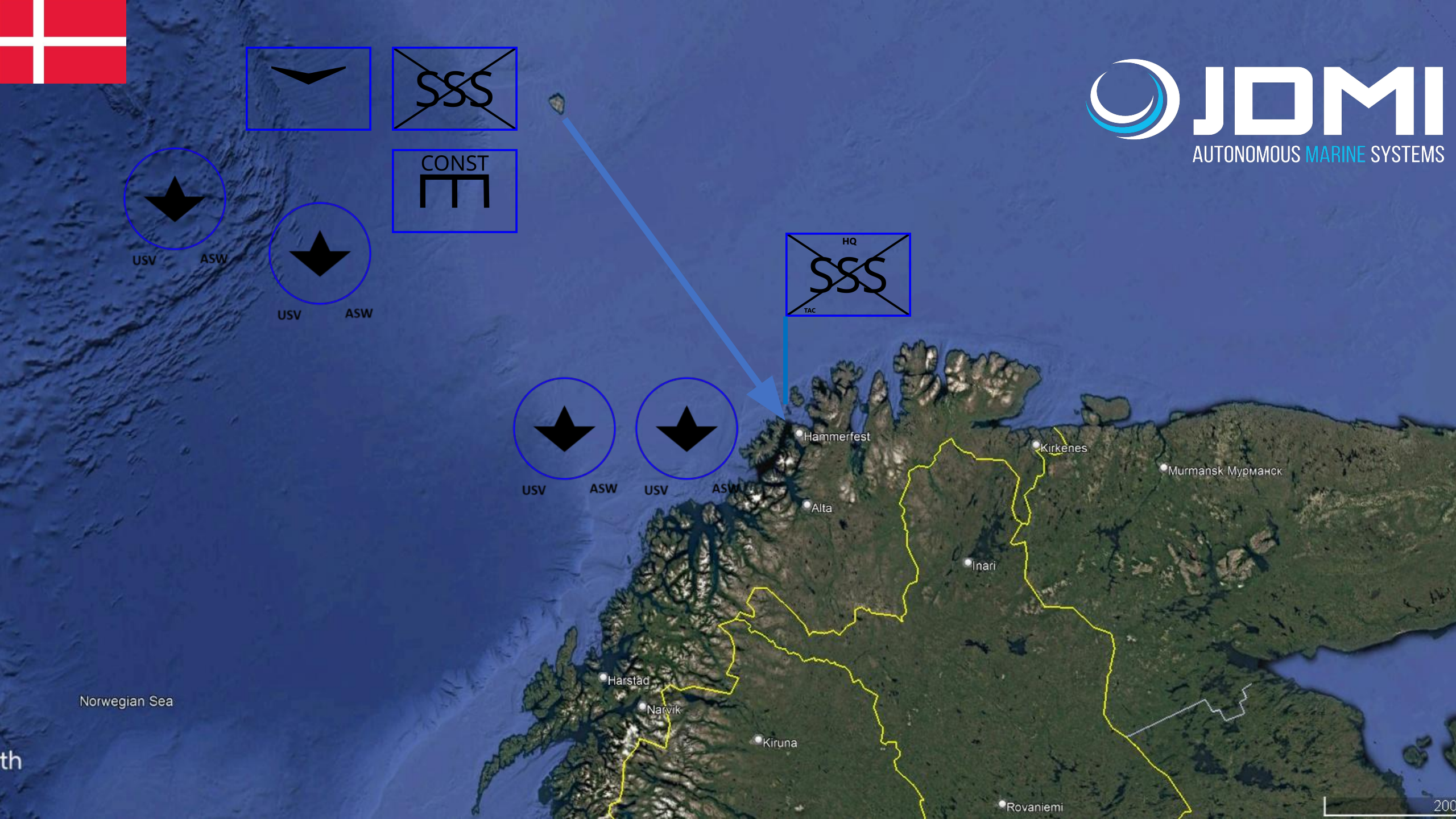


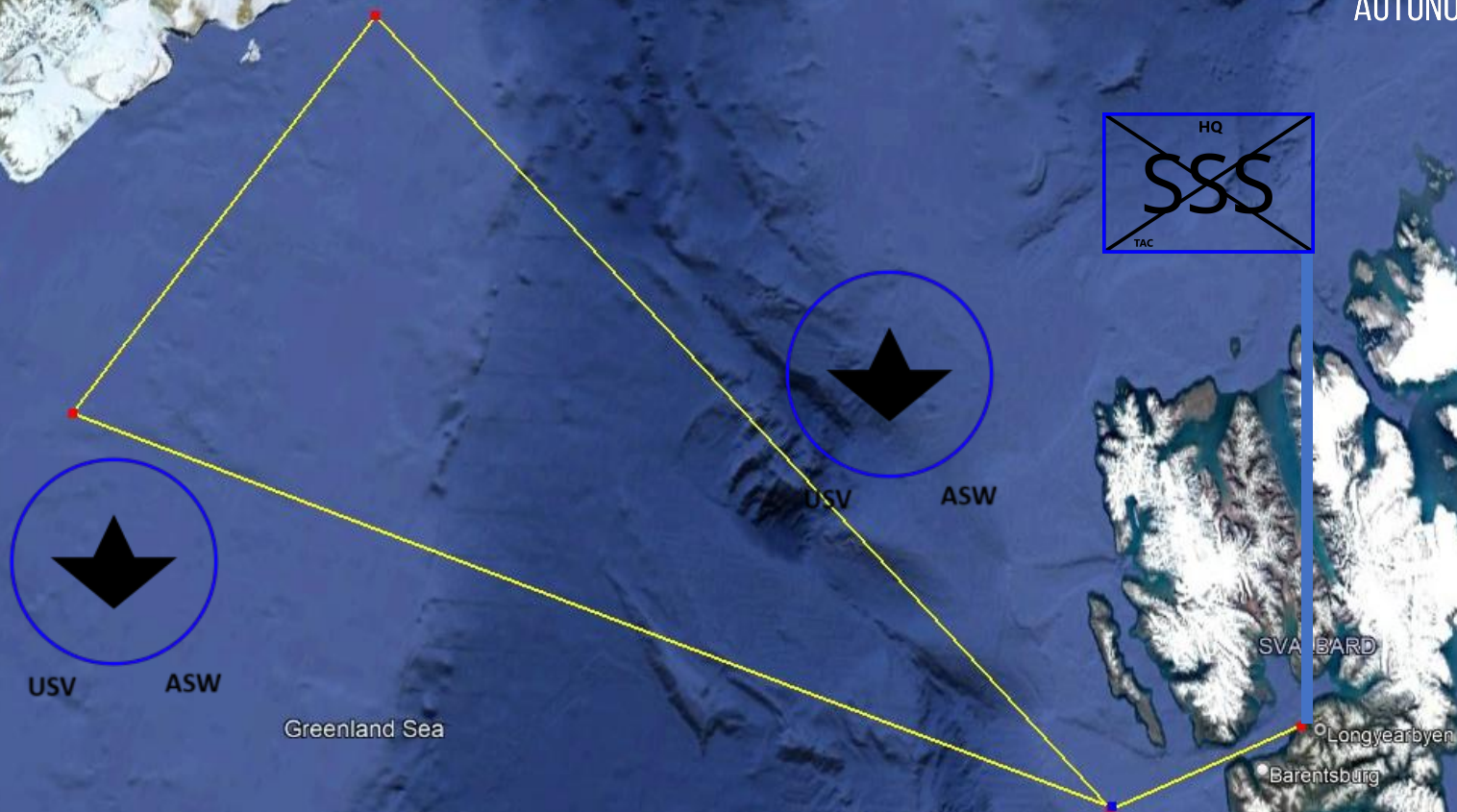
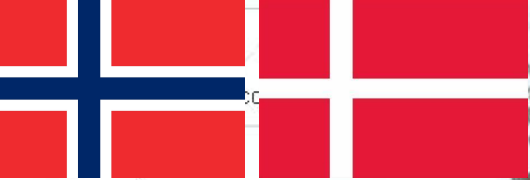
Google Earth

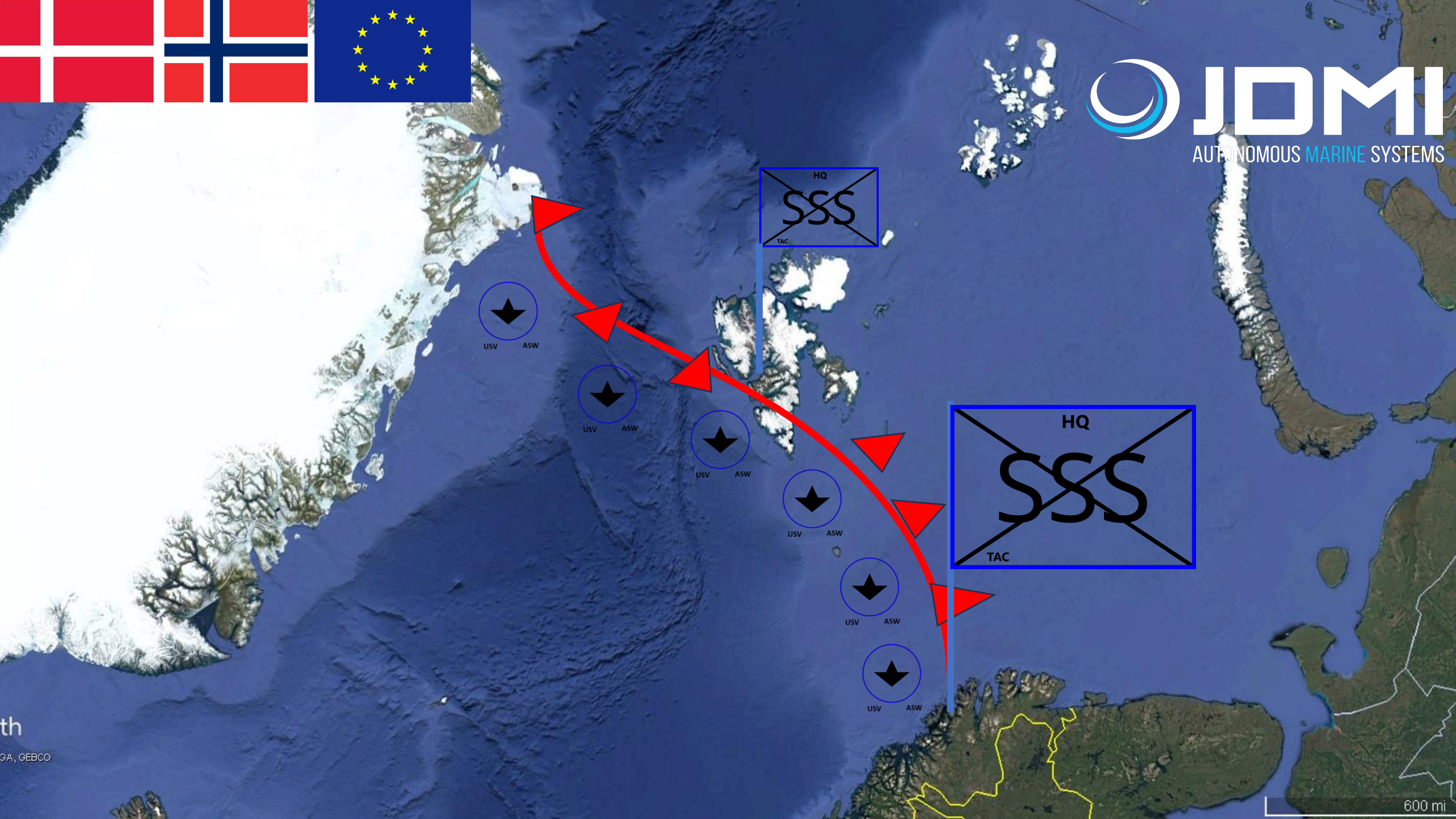
Data SIO, NOAA, U.S. Navy, NGA, GEBCO

Image Landsat / Copernicus

Image IBCAO

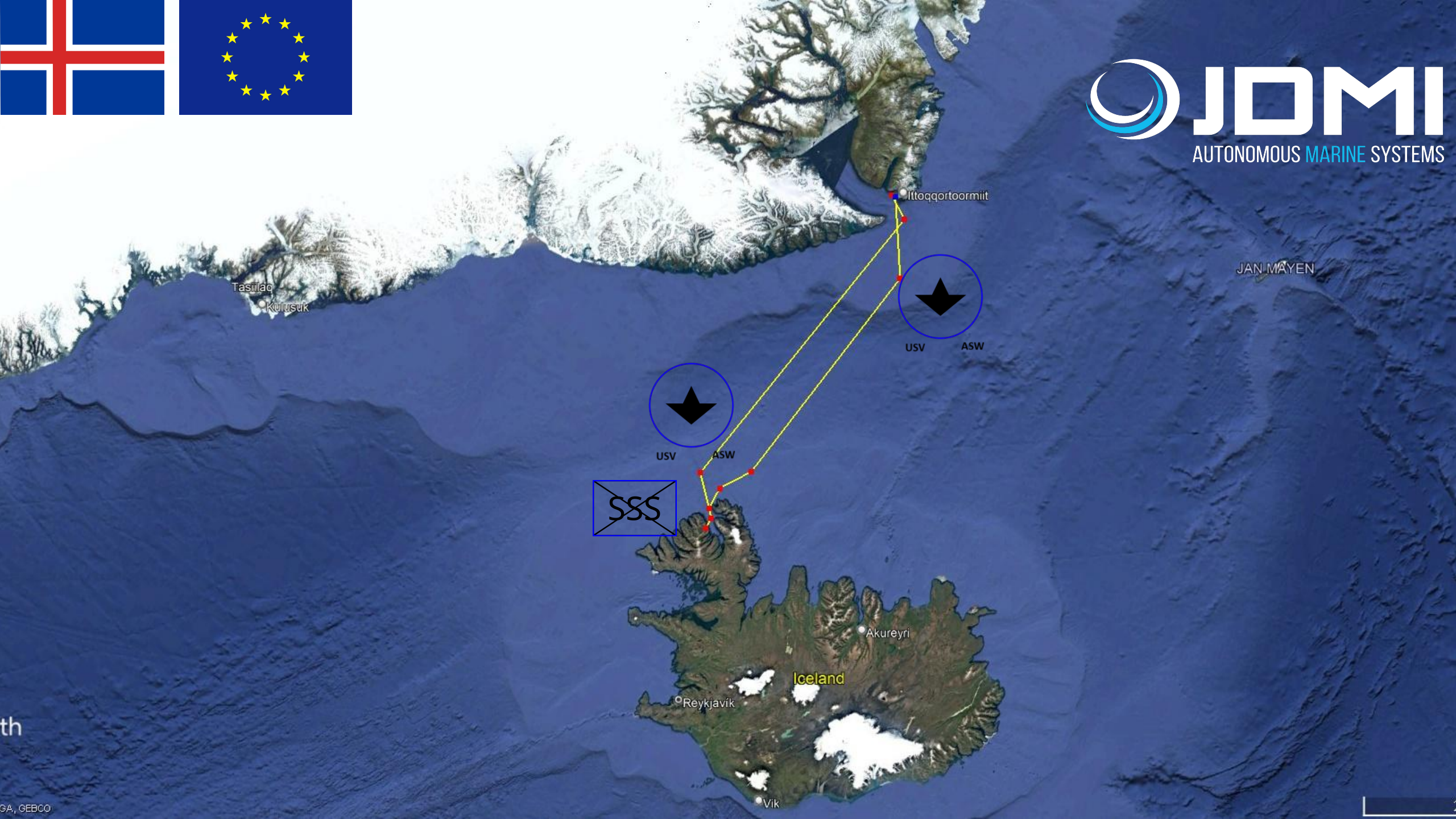
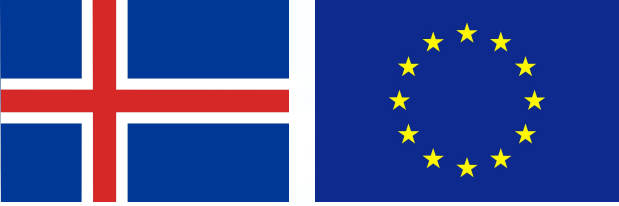


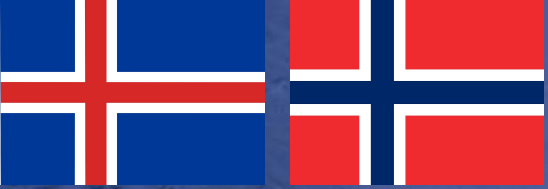




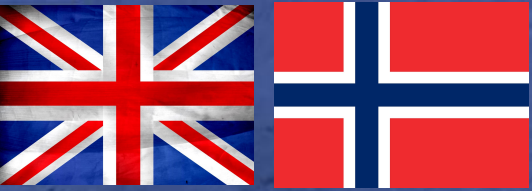
Phase One Costings

- 6 x USVs = 42,000,000
- Sensory network = 100,000,000
- Construction Bear Island = 40,000,000
- Ops room IT = 700,000
- Wages 45 staff = 3,600,000
- Consumables = 2,000,000
- Total: 188,300,000
- Denmark: 47,075,000. Norway: 47,075,000. EU: 94,150,000





th

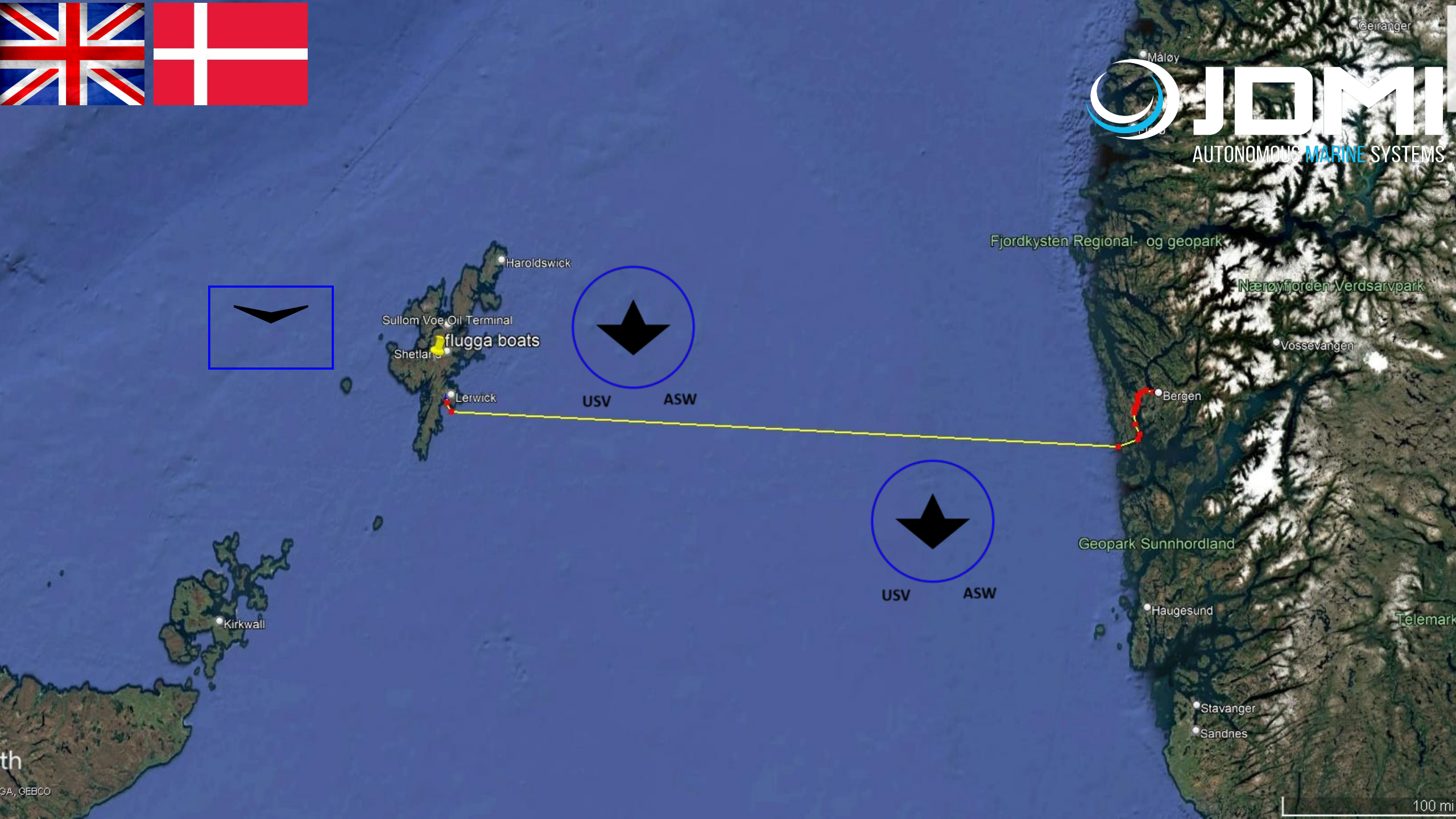
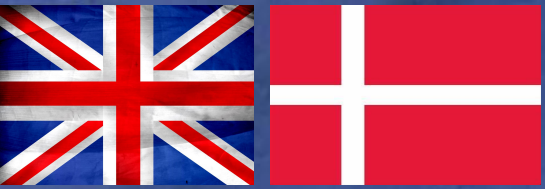


USV ASW



USV ASW







USV

ASW



Future SF Deployments



Check in



Services





Questions