

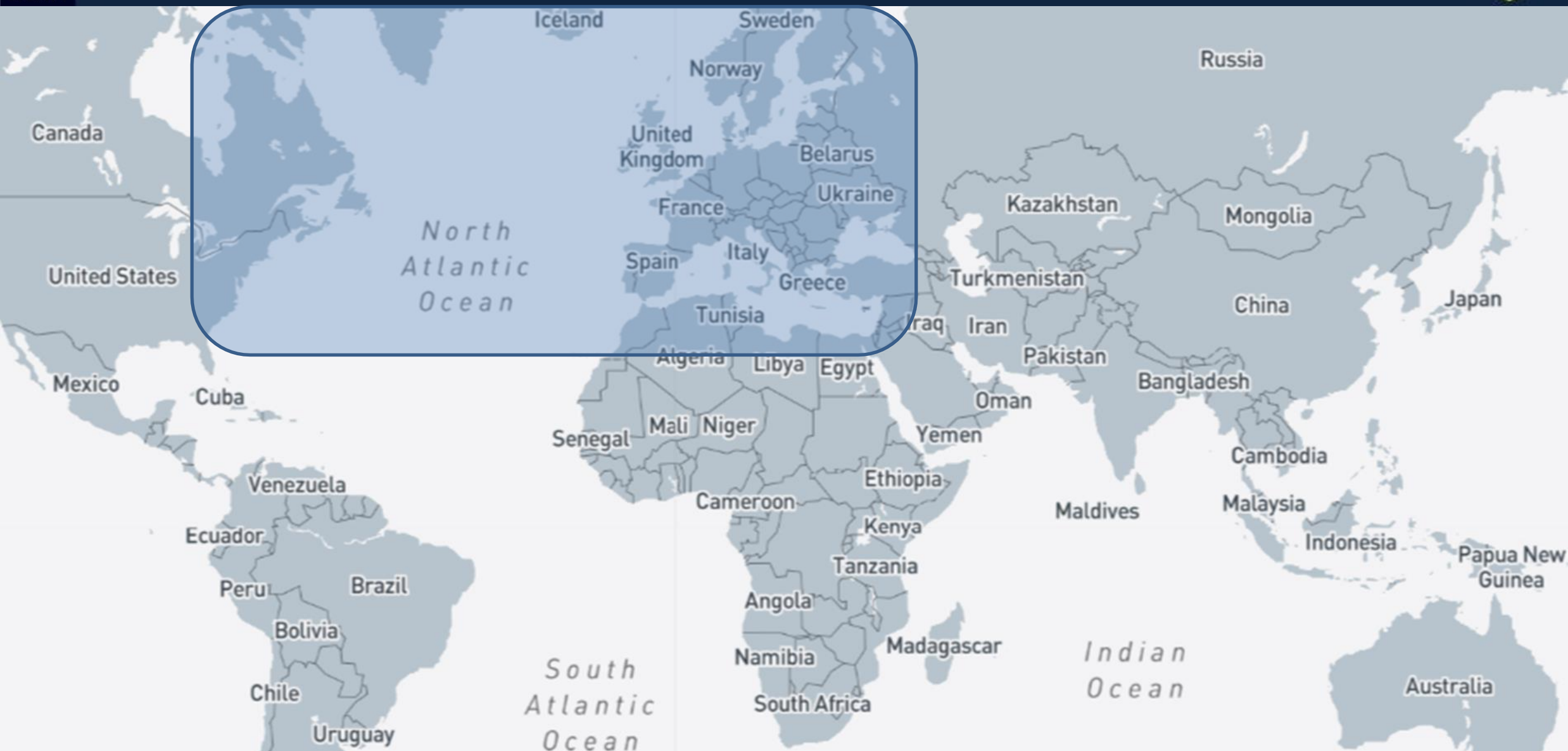
Commander, Submarines NATO



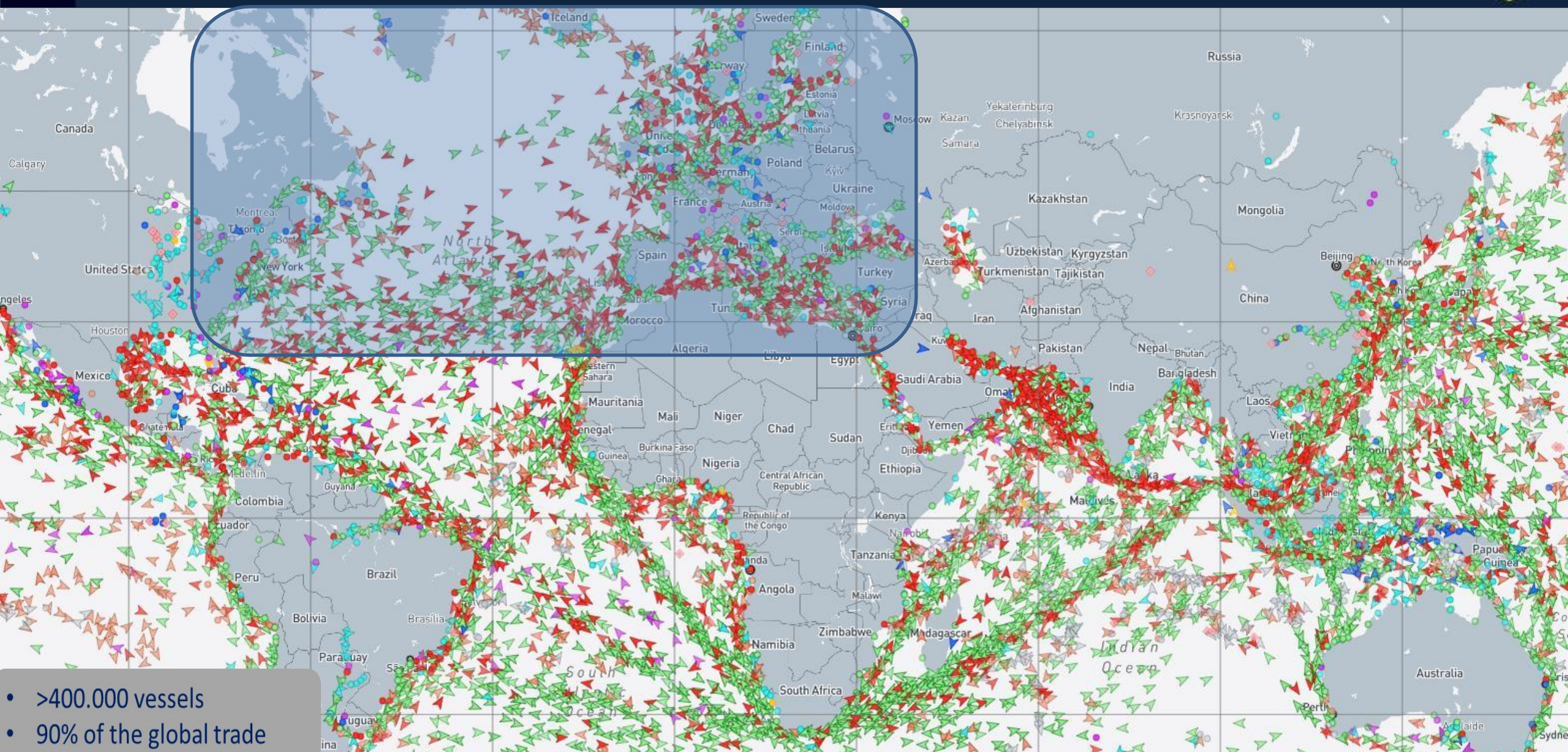
Maritime Situational Awareness



Maritime Situational Awareness

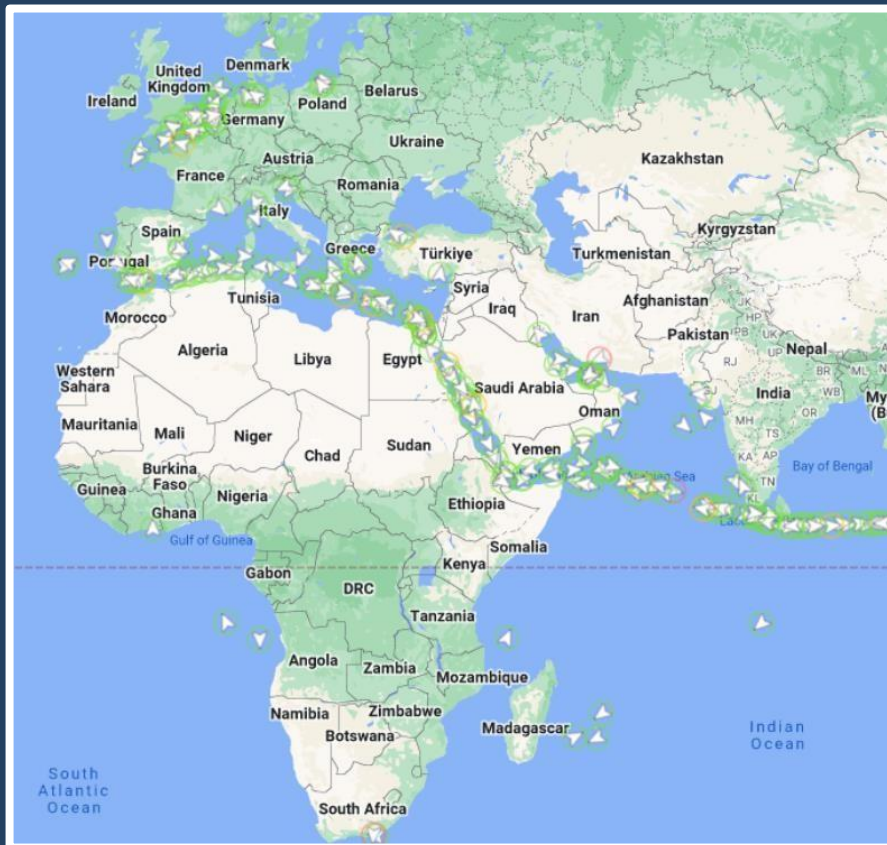


Maritime Situational Awareness

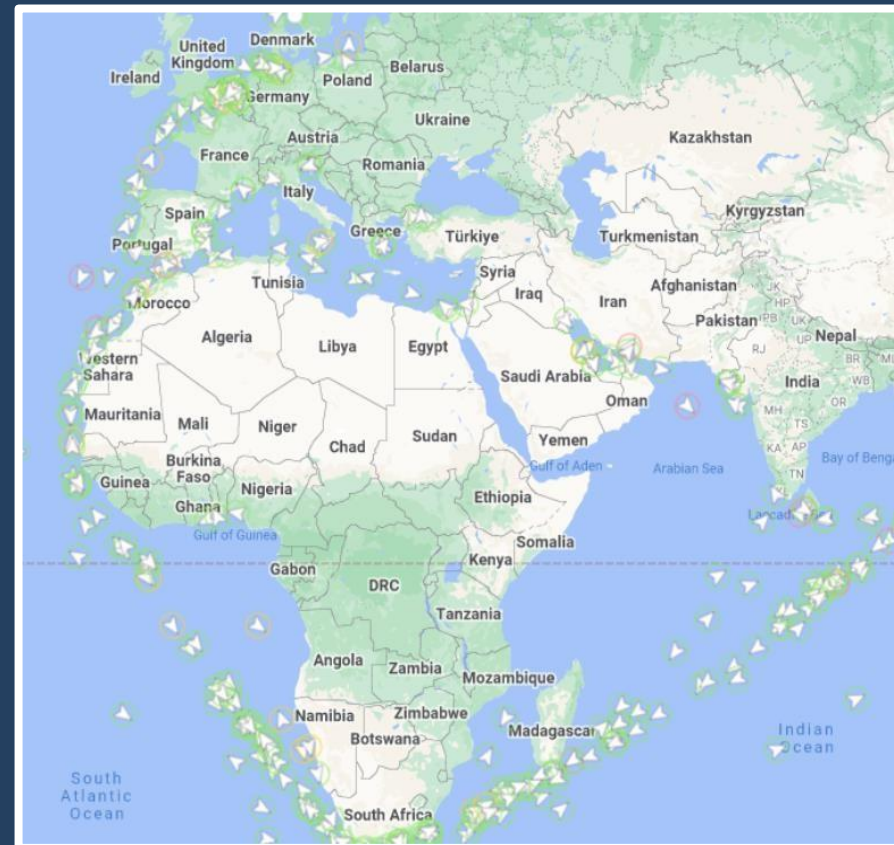


- >400.000 vessels
- 90% of the global trade

Maritime Situational Awareness

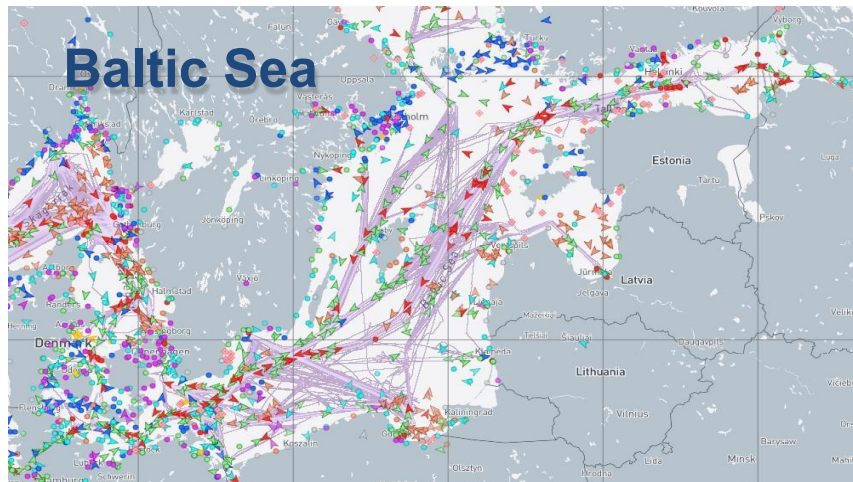


September 2, 2023: Vessel tracking data shows the normal service of 14,500+ vessels serving the Asia-Europe trade transiting the Red Sea.

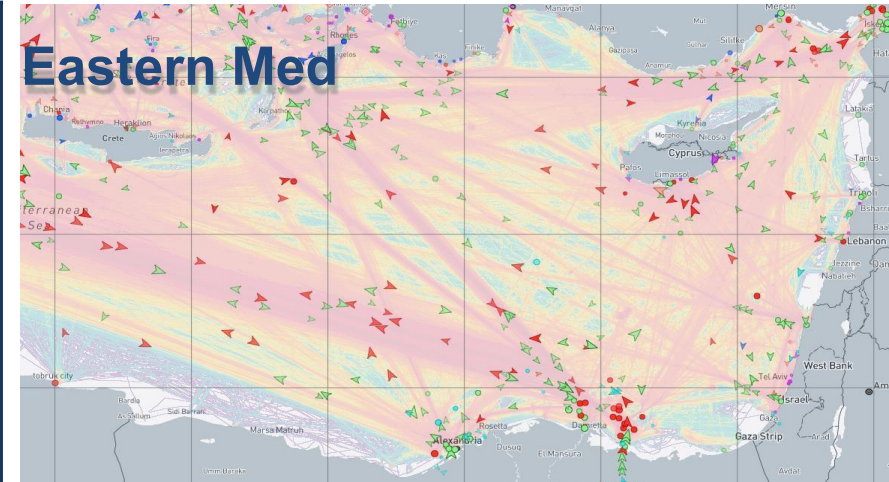


September 2, 2024: Vessel tracking data shows a striking absence of ultra-large box tonnage transiting the Red Sea at the end of last week.

Maritime Situational Awareness



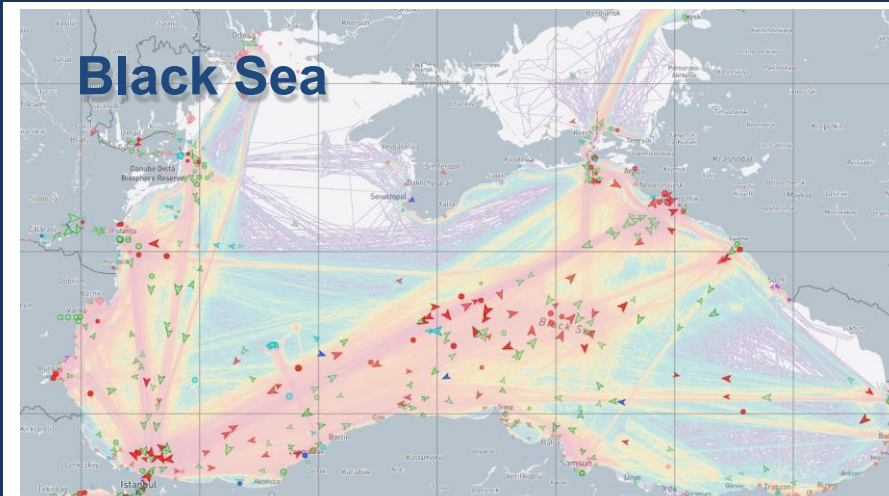
- 15% of the world's maritime traffic
- +/- 2000 vessels through straits
- CUI incidents with **no impact** in PoL



- Ports **OPERATIONAL**
- Shipping to and from Suez reduced ▼ > 70%

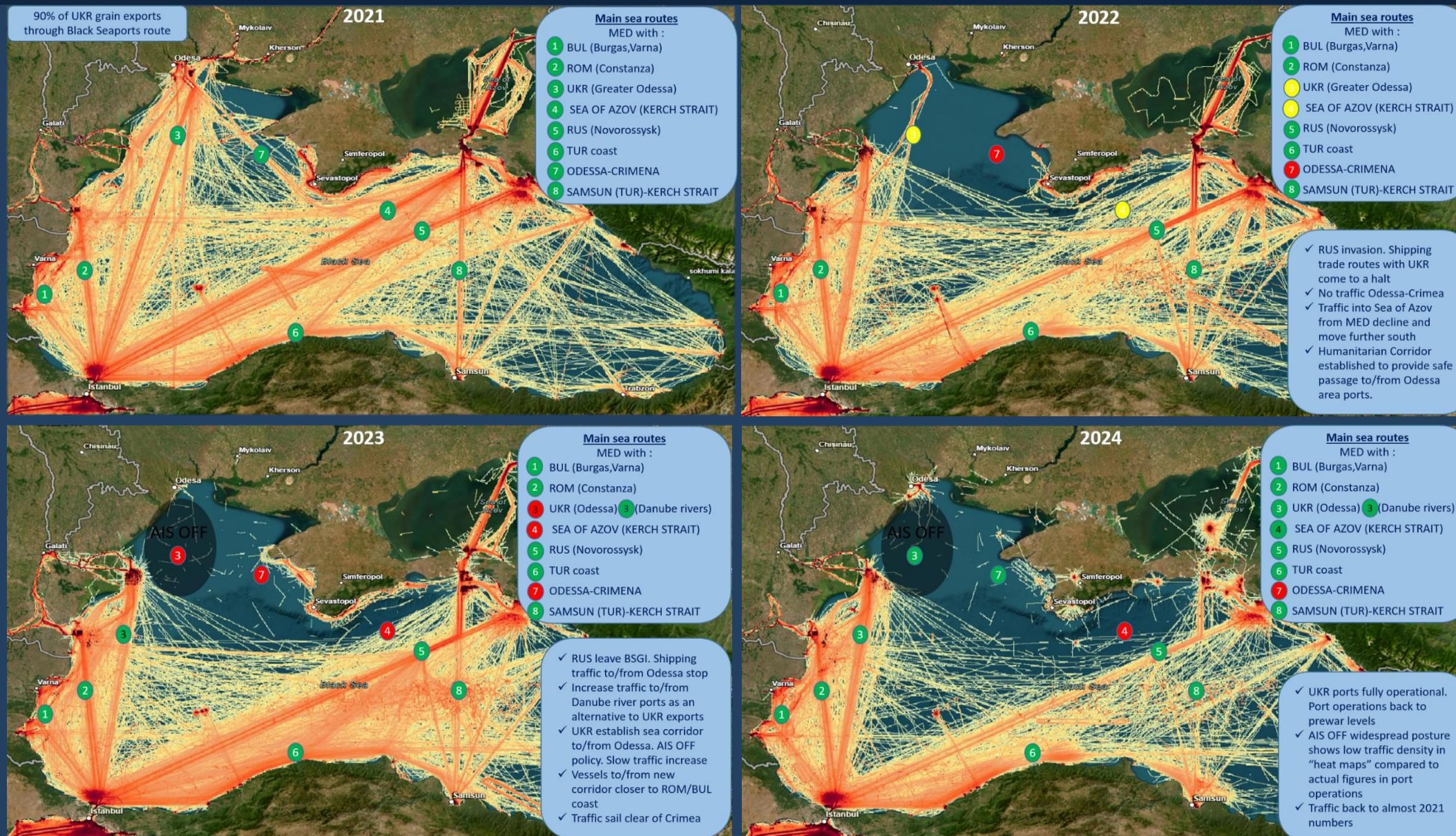


- No changes in PoL
- Daily transits through Bab el-Mandeb strait ▼ > 70%



- Odesa area and Danube river ports **OPERATIONAL**
- No changes in the PoL Vessels transiting with AIS OFF

Maritime Situational Awareness



NATO ASW Operations



NATO ASW Operations



NATO ASW Operations



Questions

