



TRIG POINT - TRAY

FORD RANGER NEXT GEN DUAL CAB



TO SUIT:

2022+ Ford Ranger Next Gen Dual Cab



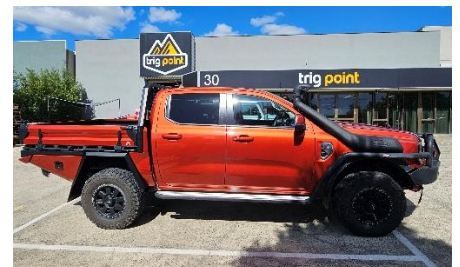
Made Tough

- Aluminium and steel construction gives the perfect balance between light weight and durability.
- Zinc plated base frame ensures excellent corrosion resistance.
- Standard in durable black powder coat.
- Heavy Duty 4mm alloy Raptor coated floor.
- Steel Rear Bar protects the tray and under body boxes from rear impact damage.
- Fabricated Alloy headboard for durability and protection.
- Easily operated, rattle free latches.



Made Smart

- Fully compatible with original parking sensors, cameras, and radar (where fitted).
- Headboard and tray fit cab profile for a streamlined look and reduced wind noise.
- Recessed rear LED lights reduce the chance of damage offroad.
- Under body toolboxes are tapered to improve departure angle.
- Recessed tie down track on the inside and integrated rail on the outside to secure the load easily and safely.



Made in Australia

- Designed, manufactured, and assembled in our purpose-built facility in Rowville, VIC.
- Fully ADR compliant.
- Trig Point's own uniquely designed and patented steel hinges allow for easy removal of tray sides, whilst maintaining strength and durability.

OPTIONS AND MODEL VARIANTS



Base Model Inclusions

- Tubular tie down rails on outside and recessed tie down tracks in tray.
- Fully formed and fabricated headboard for durability and protection.
- Aluminium and steel construction gives the perfect balance between light weight and durability.
- Recessed LED taillights reduces chance of damage.
- Fully ADR compliant.
- Fully compatible with original parking sensors, cameras and radar (where fitted).
- Front Infill Panels to blend the gap between cabin and tray.
- Rear Infill Panel including Radar System brackets (not required on Cab Chassis models)
- Flared wheel arches to suit larger wheel track width.
- High quality Trig Point embossed rubber mudflaps.
- Durable black powder coat finish.
- Removable hinged sides for easy use.
- 4 x quick release rings for use with internal tie down track.
- 205kg
- OD 1865mm wide x 1700mm long
- ID 1715mm wide x 1590mm long x 275mm high

Underbody Tool Boxes (included with tray)

- Tapered to improve departure angle.
- Slam shut latches.
- Fully lockable.
- Downward opening door for easy access.
- Door seals for water and dust resistance.
- Rated to carry 20kg.
- Durable cast hinges.
- Designed specifically for Trig Point Trays to seamlessly integrate with surrounding components.

Integrated Rear Bar (included with tray)

- Protects the tray and under body boxes from damage.
- Securely mounted to tray frame and braced to chassis mounts.
- Tapered for improved departure angle.
- Durable steel construction.
- Designed specifically for Trig Point Trays, seamlessly integrating with surrounding components.

Optional Extras

- Black Chrome Tail Light Kit
- Rear Camera Relocation
- Under Floor Water Tank
- Water Pump Kit
- Rear Trundle Drawer
- Rear Ladder Rack
- Headboard Spare Tyre Mount
- Toolbox mounted compressor
- 12v Power Kit
- 2-tone Colour Coded Paint



Removeable canopy and more options coming soon.

Warranty policy and details are available at: www.trigpoint.com.au