

DON'T RISK EXPENSIVE REPAIRS & REDUCED PERFORMANCE

Defend against oil and soot buildup in your air intake manifold with a Diesel Care™ Provent® Catch Can Kit.

KIT CONTENTS

Mounting problems solved with everything included in the Kits for an easy D.I.Y. install

- Diesel Care™ Provent® oil mist separator
- Vent hose, fittings, clamps and fixing hardware
- Custom designed vehicle specific mounting bracket
- Detailed D.I.Y. Installation Instructions



*Contents may differ based on fitment application

BENEFITS

- Substantially reduces deposits forming in the air intake
- Prevents costly repairs
- Helps maintain engine performance and efficiency
- Critical engine components are kept clean
- Oil buildup in intercoolers is prevented

Diesel Care

CATCH CAN KIT

CLEANLINESS EQUALS EFFICIENCY

Oil mist entering your air intake from the crankcase ventilation system combined with exhaust gases from exhaust gas recirculation causes soot deposit build-up in modern diesel engines. Over time this vastly affects the performance and efficiency of your vehicle. A simple solution is to install a catch can.

Diesel Care™ Provent® Catch Can Kits will make the job easy.

For more information visit our website or call and speak to one of our diesel injection specialists.

www.dieselpcare.com.au
FREECALL - 1800 880 150

Diesel Care Australia Pty Ltd

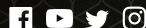
DALBY
07 4669 0690
89 Loudoun Rd

GOONDIWINDI
07 4671 2153
8 Phar Lap Court

TAMWORTH
02 6765 3733
46A Dampier St.

TOOWOOMBA
07 4698 9350
20 Pechey St.

Lic No. MVRL31630



Scan for more info



- ✓ Diesel Fuel Injection Service
- ✓ Vehicle Diagnostics
- ✓ Turbocharger Service
- ✓ Steinbauer Performance Products
- ✓ Dyno Tuning
- ✓ 4WD Accessories

Authorised service dealer for Bosch, Zexel, Delphi, Denso, Stanadyne, Fuchs, Schwitzer, Steinbauer Tuning Technologies and is a recognised Bosch Diesel Centre.

Diesel Care

CATCH CAN KIT

CLEANLINESS EQUALS EFFICIENCY

Protect your diesel engine from reduced performance, increased fuel consumption, and expensive repairs by preventing soot deposit build-up in the engine's air intake manifold.



PREMIUM OIL MIST SEPARATOR

WHY IS FITTING A CATCH CAN SO IMPORTANT?

Modern diesel engines suffer from a condition brought about by an emission control process called Exhaust Gas Recirculation (EGR). In the EGR process some exhaust gases are piped to the air intake system, this modifies the combustion process thereby lowering Nitrous Oxide emissions produced. The hot exhaust gas contains carbon (soot) and other by-products of combustion that would not normally attach to the intake manifold if not for another emission control process called Closed Crankcase Ventilation (CCV).

Crankcase ventilation gases are also piped to the air intake system, this gas contains oil mist and water in the form of vapour. When the crankcase gases from CCV combine with the exhaust gases from EGR, the oil mist mixes with the soot particles to produce a mixture that attaches to the walls of the intake manifold. It's the combination of the oil with soot that creates the problem. These deposits build up over time to a point where they severely restrict the flow of air, causing reduced performance and fuel efficiency.

Removing the deposits involves disassembly of the intake system from the engine, both time consuming and expensive. By installing an Oil Mist Separator, often called a Catch Can, the oil mist and water vapour are substantially removed from the combination thereby taking away the ingredient that allows the soot to stick. The result is that the build-up of deposits is GREATLY reduced.

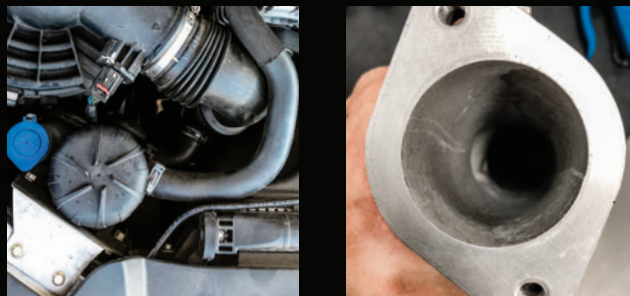
WHY DO WE USE PROVENT® OIL AND MIST SEPARATORS IN OUR KITS?

Made by German manufacturer Mann+Hummel, the Provent® catch cans are high quality. The smart engineering that goes into the design of the Provent® offers highly efficient oil separation to provide ideal protection for your investment. They are a light, robust and compact design, with a substantial volume to catch oil and are exceptional for variable flow rates. They also have an integrated safety feature against irregularly high crankcase pressure. Available in a variety of sizes depending on application, they are maintenance friendly and tested rigorously to ensure the quality of their performance.

COMMON FAQ'S

- **Does a Catch Can have any effect on the roadworthiness of my vehicle?** *No, fitting a Catch Can is completely legal.*
- **My vehicle has an auxiliary fuel filter, will there be room for a Catch Can too?** *That depends on the vehicle. In some cases the two units are installed in completely different locations, in others a dual bracket capable of mounting both units is available.*
- **If this deposit build-up is such a common problem why don't manufacturers fit a mist separator in production?** *A few do, but not many. Most manufacturers seem more focused on meeting emission requirements when the vehicle leaves the showroom than they are about the harmful side-effects of the methods used to meet those requirements. It may be that, generally speaking, vehicles are built to a price point so things are left off the list.*

WITH DIESEL CARE™ PROVENT® CATCH CAN INSTALLED



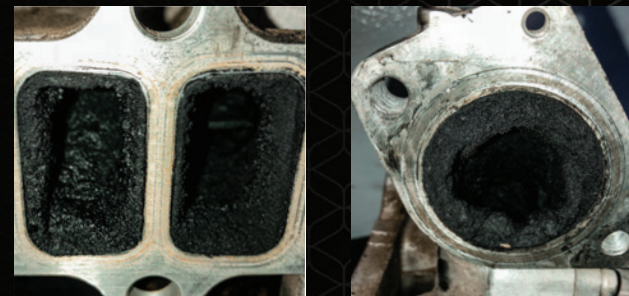
Catch can kit installation = Clean inlet manifold

“Simple in design and strong in construction I've now got peace of mind that this kit will do its job and prevent carbon deposit build-up in my vehicle – Peter”



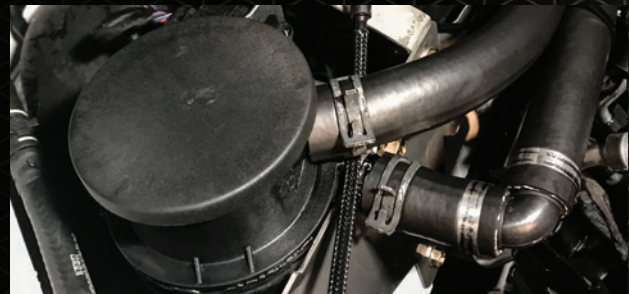
MOUNTING PROBLEMS SOLVED
with everything included in the Diesel Care™ Provent® Catch Can Kits for an easy D.I.Y. install

WITHOUT DIESEL CARE™ PROVENT® CATCH CAN INSTALLED



Contaminated inlet manifolds

PREMIUM OIL AND WATER SEPARATOR



DIESEL CARE™ PROVENT® CATCH CAN KITS ARE AVAILABLE FOR A RANGE OF THE MOST POPULAR LATE MODEL 4WD'S & SPORT UTILITY VEHICLES