



SPARK PLUG BOOTS

Protect and increase the life of your expensive plug wire sets with Insul-Boots™. Preventing misfires caused by burnouts, loss in performance and critical engine damage. Double wall construction provides superior protection, while special coatings reflect and dissipate heat to boots. Available in two colors: black and fawn and its universal design fits most boots, even 90°! Able to withstand 650°C continuous heat. Easy installation: Place ring side on end of the spark plug boot and slide the open end towards the wire.

380001	Fawn-Single Bulk	380002	Black-Single Bulk
380201	Fawn-Pack 2	380202	Black-Pack 2
380401	Fawn-Pack 4	380402	Black-Pack 4
380801	Fawn-Pack 8	380802	Black-Pack 8

EASY INSTALLATION



UNIVERSAL SIZE FITS MOST BOOTS

RATED TO
650°C

AVAILABLE IN 2 COLOURS

REFLECTS AND DISSIPATES HEAT

- ✓ Withstands 650°C continuous heat
- ✓ Reflects & dissipates heat
- ✓ Available in 2 colours: Black & Fawn
- ✓ 25mm inside diameter
- ✓ Universal size fits most boots including 90°

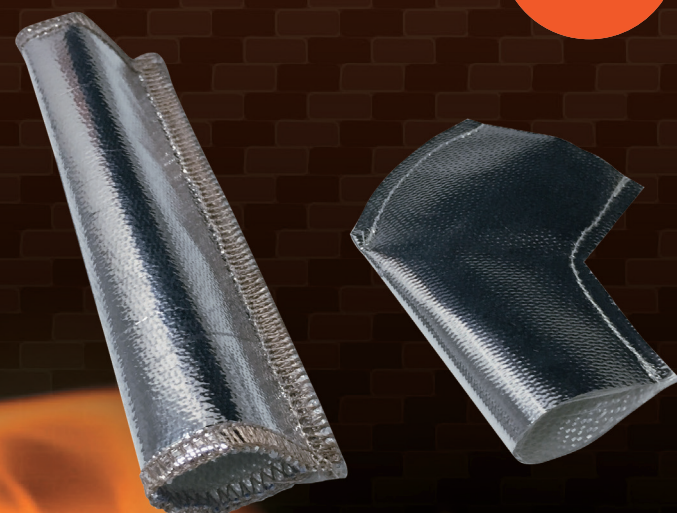
REFLECT-A-BOOT

Reflect-A-Boot™ acts as a thermal barrier capable of reflecting away 90% of radiant heat from your spark plug boots. It's super low weight offers superior heat protection. Able to withstand 535°C continuous radiant heat & 270°C direct heat. Polyester Aluminized film is bonded with fibreglass cloth.

- ✓ Withstands 535°C continuous heat
- ✓ Hook & loop closure

Sewn Version

740120	Straight-Set of 2
740110	45 Degree-Set of 2



RATED TO:
535°C



HEAT SHIELD MAT SILVER & GOLD

- ✓ Woven Fabric E-Glass withstands up to 550c of direct heat
- ✓ Aluminium laminated on one side rated to 180c
- ✓ When used in applications where there is 25mm of air space and air flow, this matt is capable of reflecting 90% of radiant heat
- ✓ High Temperature peel and stick adhesive
- ✓ Aluminized fibreglass with adhesive backing
- ✓ Stops heat from entering the vehicle
- ✓ Lightweight-610 grams per square metre
- ✓ Adhesive Backed
- ✓ Thickness 0.8mm

Sizes Available in Silver

721101 — 315mm x 330mm
721005 — 475mm x 500mm
721202 — 620mm x 650mm
721305 — 1000mm x 1650mm

(Larger sizes available on request)

Sizes Available in Gold

821101 — 315mm x 330mm
821005 — 475mm x 500mm
821202 — 620mm x 650mm

(Larger sizes available on request)



APPLICATIONS:



NATIONAL AUTO PARTS 20 Production Drive, Campbellfield 3061

P: (03) 9357 6100
www.naparts.com.au



REFLECT-A-SLEEVE

- ✓ Thermal Barrier capable of reflecting 90% of heat away
- ✓ Withstands 1000F (535C) radiant heat & 500F (270C) direct heat
- ✓ Polyester Aluminized film is bonded with fibreglass cloth
- ✓ Lightweight with total thickness 0.4mm

Sizes Available:

010401 - 8mm ID x 1200mm long
010402 - 10mm ID x 1200mm long
010412 - 12mm ID x 1200mm long
010416 - 15mm ID x 1200mm long
010403 - 18mm ID x 1200mm long
010425 - 25mm ID x 1200mm long
010450 - 50mm ID x 1200mm long



HIGH TEMPERATURE INSULATION SLEEVING

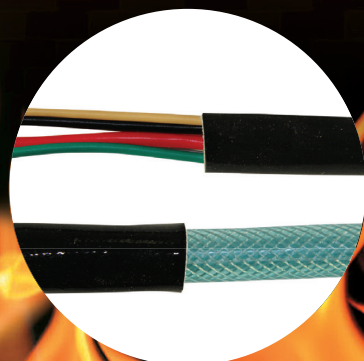
- ✓ Highly Flexible
- ✓ Rated -60c to +250c
- ✓ Self Extinguishing
- ✓ Silicone outside, with Glass Yarn Filament Inner
- ✓ Ideal for wiring, hoses, brake lines, etc

Sizes Available:

6mm, 12mm, 16mm
and 20mm ID

330006 - 6MM I.D x 1000MM
330012 - 12MM I.D x 1000MM
330016 - 16MM I.D x 1000MM
330020 - 20MM I.D x 1000MM

Longer lengths available on request

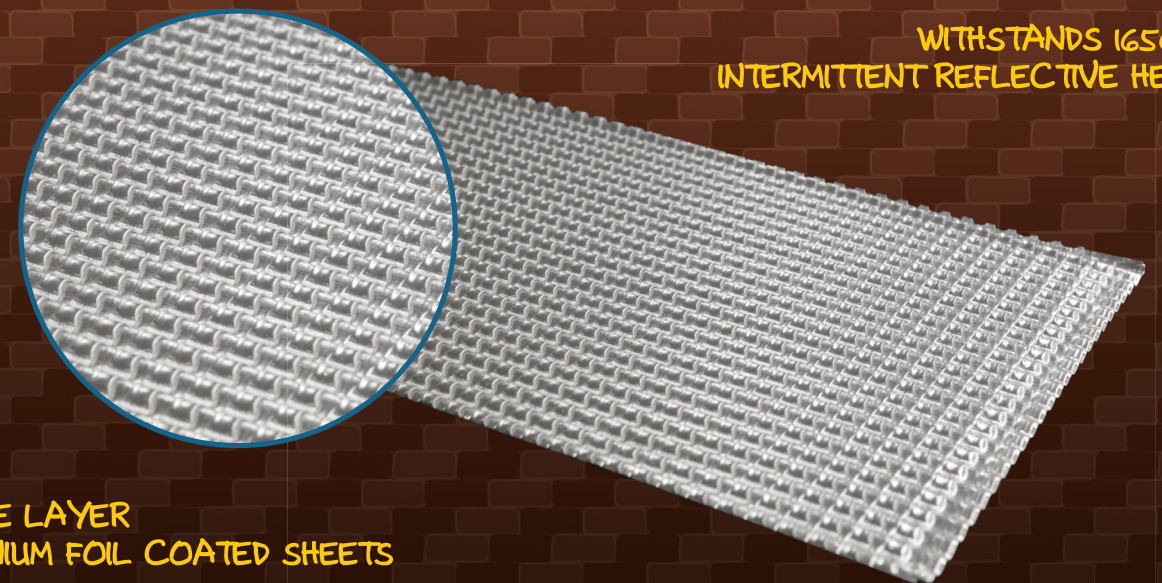


National Auto Parts
20 Production Drive, Campbellfield 3061
P: (03) 9357 6100 www.naparts.com.au

ALUMINIUM HEAT SHIELD

The unique double corrugation design allows the material to be formed into complex shapes and ensures exceptional rigidity. This material provides excellent performance in high temperature and noise sensitive application. Constructed with two Aluminised steel sheets with a synthetic fibre insert, double formed.

CAN BE SCREWED OR RIVETED
TO ANY SURFACE



WITHSTANDS 1650°F
INTERMITTENT REFLECTIVE HEAT

DOUBLE LAYER
ALUMINIUM FOIL COATED SHEETS

- ✓ Reflects up to 90% of Radiant Heat
- ✓ Double layer Aluminium foil coated sheets
- ✓ Can be screwed or riveted to any surface
- ✓ Easily moulded into permanent position

Sizes available:

730116 300mm x 500mm x 3.5mm
730112 275mm x 700mm x 3.5mm
730113 500mm x 700mm x 3.5mm

RATED TO:
1,650°

Tech Sheets-HPP-Aluminium Heat Shield 2023

APPLICATIONS:

