

INTRODUCING THE  
**STRONGEST  
TRACTION**  
ALL-TERRAINS AND MUD-TERRAINS  
**IN AUSTRALIA**



MICKEY THOMPSON  
**M/T**  
TIRES & WHEELS  
LEGENDARY OFF-ROAD TIRES



# WHERE THE OFF-ROAD LEGEND STARTED...

## THE MAN

Mickey Thompson is a giant amongst racetrack heroes. He is the driver who holds more auto speed records than anyone on earth. He is the maverick car builder whose designs revolutionised racing. He is the tyre innovator whose tyres were used on fast attack vehicles in the Gulf War. He is the man who never gave up.

## A NEW SPORT IS BORN

The world was given a new sport with the running of the first Mexican 1000 in the wilds of Baja, Mexico in 1967...

"A LOT OF THE OFF-ROAD RACING WAS DOWN IN BAJA, MEXICO. THAT'S THE WAVE OF THE FUTURE AND WE'VE GOT TO GET ON IT."

- MICKEY THOMPSON

By 1969, the Mexican 1000 had become famous. Television viewers could watch the off-roading event on ABC's Wide World of Sports.

In the 1969 event, Mickey Thompson and Danny Ongias competed in a Ford pick-up truck. The experience was new for Mickey, and the thrill of flying through the desert trying to overcome competitors and the terrain flipped a switch in his brain that had never been turned on before. Thompson was hooked on off-road racing.



Mickey became known as the man who put big engines in off-road buggies. This is his V8 Chevy powered rear-engined buggy.

## FIRST TO CREATE SIDEBITERS

In 1977 Mickey Thompson pioneered tread-on-the-sidewall "Sidebiter" technology.

"We looked at all the damage to tyres caused by off-road racing. We designed a tread that would go all the way down to the widest part of the tyre so that no matter what you hit, you weren't going to cut through to the fabric."

"MICKEY ALSO WANTED TO FIND A WAY FOR HIS TYRES TO DIG HIM OUT OF A RUT FAST SO HE COULD GET PAST SLOWER VEHICLES. WE DESIGNED THE VERY FIRST SIDEBITERS AND THEY DID BOTH JOBS."

- GENE MCMANNIS

## RACING UP THE STADIUM STEPS

Mickey startled the off-road racing community by announcing that he would produce an off-road race in a stadium. That's exactly what he did at the Los Angeles Coliseum before 40,000 cheering spectators in 1979.

OFFICIALS TOLD MICKEY HE WAS CRAZY, THAT DRIVING A RACING CAR UP A SEVEN-STOREY INCLINE AND BACK DOWN AGAIN WAS IMPOSSIBLE. SO, MICKEY CLIMBED INTO HIS CAR AND DID IT.



Mickey makes plans to produce the off-road race at the LA Coliseum.

## WINNING THE BAJA 1000

Mickey designed some of the fastest off-road cars ever built.

In 1979 he won the Race of Champions at Kresno. But the race he wanted to win was the Baja 1000 in Mexico - the toughest test for young men, let alone a 50 year old. But Mickey wouldn't quit.

The move to Mexico in 1982 was like an army preparing for combat. It was as if Mickey's whole life had prepared him for this race. There were over 200 cars at the starting line. In a cloud of dust they began their race through the desert. Near Gonzaga Bay Mickey hit a muddy tide pool and flooded his car.

"THE MUD WAS SO THICK I HAD TO SCRAPE IT OUT OF MY EYES BEFORE I COULD OPEN THEM. I POURED SOME GASOLINE ON MY FLOODED ENGINE AND SET IT AFIRE."

- MICKEY THOMPSON

"It really blazed up. An aeroplane was flying around and the pilot brought it down to see if he could help. When the fire flamed real high, everyone around me scattered. I jumped in the car, hit the ignition and got it up to 100 mph as fast as I could. It blew out the flames so I stopped and hitched up my harness and put my helmet back on. I'd figured I'd either get the ignition dry or burn up the car. It was a desperate thing to do but that's how you survive in Baja."

After ten hours the rough terrain took its toll on Mickey and his car. It took the crew 45 minutes to fix a brake problem. While Mickey stood beside his crew, he watched cars fly by that he'd taken hours to pass. In true Mickey style, he didn't give up. He knew he would just have to pass them again. Over the next nine hours Mickey did pass them again, won the race and set a new speed record of 19 hours, 40 minutes and 23 seconds.



Mickey's girdle suspended him from the ceiling to reduce strain on his neck.

## THE LEGEND LIVES ON

From his home-made car that beat the rich kids' store bought cars, to his junkyard cars that won street races, to his innovative cars that set new records on the dragstrip, to Bonneville to Indianapolis, to Pan Am to Baja - Mickey Thompson succeeded because he never gave up.



# RACING LEGEND. INNOVATOR.

Mickey Thompson is a giant amongst racetrack heroes. He holds more auto speed records than anyone on earth. Winning races in record time was the driving force behind Mickey Thompson's innovations in tyre design. If tyres held Mickey back, he adjusted them so they would get him first over the line in the fastest time.

Mickey developed many innovations in his time, and Mickey Thompson Tires continues that constant innovation in everything we do today. It's in our DNA.



**1963**  
**MICKEY**  
**THOMPSON**  
**FOUNDED**

**SIDEBITER** M/T



**POWERPLY** M/T  
CONSTRUCTION

**A LEGEND IS BORN**  
Introduction of Legend EXP and Legend MTZ

**BAJA BOSS A/T**  
Mickey Thompson's best all-terrain to date

**BAJA PRO XS**  
New super traction and super strength tyre for the true enthusiast

**BAJA BOSS M/T**  
Innovative pattern and compound to attack the harshest environments

**BAJA PRO X**  
The ultimate tyre for strength and traction

**POWERPLY XD**  
Unequalled sidewall strength whilst maintaining weight and balance

**LAND SPEED RECORD**  
Danny Thompson sets a new record of 448.757 mph at Bonneville

**DANNY THOMPSON BREAKS LAND SPEED RECORD**  
At 406.7mph Danny overtook his father's record 50 years on

**REVOLUTIONARY NEW ATZ<sup>TM</sup>**  
A hybrid, new breed of all-terrain tyre is born

**WORLD'S FIRST TYRE WITH DIRECTIONAL SIDEBITERS**  
The Baja Claw TTC was redeveloped with directional tread on the sidewall

**POWERPLY**  
Third Angle Ply Carcass Construction was developed

**PATENT AWARDED FOR BAJA CLAW DESIGN**  
Recognition awarded for Kevlar Belted 4x4 tyre design

**WORLD'S FASTEST D.O.T. MOTORCYCLE TYRE**  
MCR2 developed

**23° ANGLE DIRECTIONAL TREAD WITH SIDEBITERS**  
The Baja CLAWTTC was redeveloped with directional tread

**500 MPH BONNEVILLE LAND SPEED RECORD TYRE**  
17" Off-Road Racing Tyres & Wheels

**MOTORSPORTS HALL OF FAME**  
Earned by Mickey's contribution to Motorsports

**STRONGEST LIGHT WEIGHT WHEEL**  
Strongest Widest Light Weight Forged Aluminium Wheel

**QUIET ON AND OFF-ROAD**  
Mickey Thompson developed the Bias Belted Carcass

**WIDEST D.O.T. STREET TYRE**  
Mickey developed the Indy Profile S/S tyre

**WINNING BAJA 1000**  
Mickey set a new speed record of 19 hours, 40 minutes and 23 seconds

**SIDEBITERS**  
Mickey developed sidewall tread to enhance off-road performance

**MICKEY GOES BIG**  
Mickey developed a tall Light Truck 35" O.D. tyre

**FASTEST MAN ON EARTH**  
Mickey set a new one way speed record of 406.6mph

1960 1963 1973 1977 1982 1982 1987 1989 1990 1994 1998 2000 2001 2005 2009 2013 2016 2018 2020 2021 2022



Today, Mickey Thompson Tyres remain generations ahead of the competition, ensuring four-wheel drivers benefit from the ultimate performance. **NOT ALL TYRES ARE CREATED EQUAL.**

To make it simple when buying tyres, you need to consider three things: **TREAD** (depth and design), **CARCASS** (the way the tyre is built) and **COMPOUND** (the blend of materials used to build it) or **T.C.C.** This combination delivers solid off-road performance with high mileage and control on-road.

## T TREAD

Mickey Thompson's desert racing experience and seeing the damage it causes to tyres has always been the driving force behind the innovative tread designs, continually to this day. Mickey Thompson Tyres remain generations ahead of the competition with features like:



### BAJA-PROVEN TREAD

Provides a bold appearance and is optimised for reduced noise, lasting tread life, off-road traction and on-road handling.



### ASYMMETRICAL TREAD

Effectively gives you a tyre with two tread patterns. This means it's able to give better traction on and off-road, better stability and less uneven wear.



### LARGE SIDEBITERS

Improves traction and reduces the chance of sidewall damage on any terrain.



The Extreme Sidebiters in the Baja Boss range are 50% larger than any other previous Mickey Thompson tyre, giving you ultimate off-road traction and protection in extreme conditions.



### STONE EJECTORS

Fling dirt and small stones out of the tyre, ensuring they don't drill through to the carcass, reducing the chance of tyre damage.



### TERRAIN ATTACKING RIBS

Claw-like ribs allow extra traction and carcass protection.



### SOUND DEADENING RIBS

Trap noise generated by the tyre to ensure a quieter drive.



### MUD SCOOPS

Drastically improves traction and self-cleaning.



### FLEX GROOVE

Enables the sidewall to compress better at lower air pressures for improved traction and reduced chance of sidewall damage.



Watch to learn more

## C CARCASS

It's the tyre's carcass that keeps it all together, the stuff you can't see inside.

While others use a standard tensile, Mickey's Next-Gen High Tensile Construction uses only Super High Tensile Steel Belts and High Tensile Cords to deliver durability, traction and performance.

For the more rebellious who like to play hard, PowerPly adds a third angled layer of cord to minimise twist and flex under acceleration, increasing strength to the sidewall.

It's these unique constructions from Mickey Thompson Tyres that ensure you get the additional strength and performance off-road, reducing the chance of tyre damage.



### NEXT-GEN HIGH TENSILE CONSTRUCTION - 33% STRONGER

Next-Gen High Tensile Body Plies on top of the light truck construction strengthens the carcass of the tyre by 33% over standard cords of the same weight, plus Super High Tensile Steel Belts which are 15% stronger than more commonly used High Tensile steel, giving a greater impact strength and more puncture resistance.



### POWERPLY - 25% MORE TEAR RESISTANCE POWERPLY XD - 10% STRONGER

Using the Light Truck, Super High Tensile Steel Belt and High Tensile Cord package, PowerPly is the addition of an angled ply. This gives greater sidewall protection with 25% more tear resistance over standard construction.

The additional denier, combined with the angle, reduces softer rubber gaps between sidewall cords, improves tear resistance, and when coming out of a turn it returns the steering to centre faster than traditional radial construction, so there is less chance of losing control in emergencies.

PowerPly XD on the Baja Boss range is even stronger than standard PowerPly - 10% stronger! The sidewall cord thickness is increased by 50%, which means even greater sidewall protection, improved handling and a quicker steering response.



Watch to learn more

## C COMPOUND

Innovations in compound technology go way beyond grip. Modern compounds adapt to conditions and, together with the carcass, conform to the driving surface and limit rebound.

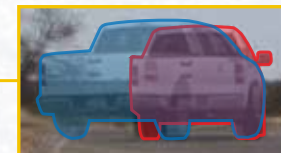


### SILICA COMPOUND

Mickey Thompson Tyres use an exclusive compound recipe utilising Chemically-Coupled Silica. It lowers rolling resistance while enhancing wet grip and improving cut and chip resistance, working together to extend the tyre's life and durability.



Watch to learn more



Brand B (blue) swerves out of control, while the vehicle with PowerPly (red) stays in control



# THE BAJA LEGEND

## PROOF THAT LEGENDS NEVER DIE.

Reborned from the depths of Baja, Mickey Thompson Tires presents the new **BAJA LEGEND EXP** all-terrain and **BAJA LEGEND MTZ** mud-terrain. This range represents decades of racing heritage and our inexplicable need to feed this beast we call adventure.

### EXP

#### ALL-TERRAIN

60% ROAD AND SAND 40% DIRT AND MUD

The **BAJA LEGEND EXP** is a step-up in all-terrain performance. It combines proven and unique design elements, technology and engineering. This tyre crosses between an all-terrain and a mud-terrain tyre.

### MTZ

#### MUD-TERRAIN

20% ROAD AND SAND 80% DIRT AND MUD

The **BAJA LEGEND MTZ** features an improved compound formula for better traction and Variable Length and Depth Sidebiters for improved off-road traction.



**LARGE SIDEBITERS**  
EXP MTZ



**BAJA-PROVEN TREAD**  
EXP MTZ



**STONE EJECTORS**  
EXP MTZ



**MUD SCOOPS**  
MTZ



**FLEX GROOVE**  
MTZ



**SILICA COMPOUND**  
EXP MTZ



**NEXT-GEN HIGH TENSILE CONSTRUCTION**  
EXP



**POWERPLY CONSTRUCTION**  
MTZ

# THE AMERICAN LEGEND

## SINCE 1963



		BAJA LEGEND EXP		BAJA LEGEND MTZ	
	TYRE SIZE	SIDEWALL	LOAD & SPEED	SIDEWALL	LOAD & SPEED
15"	31X10.50R15LT	W	I09Q	W	I09Q
	33X10.50R15LT	-	-	W	I14Q
	33X12.50R15LT	W	I08Q	W	I08Q
	35X12.50R15LT	W	I13Q	W	I13Q
16"	LT245/70R16	30X9.50R16LT	W	I18Q	-
	LT265/70R16	31X10.50R16LT	W	I21Q	-
	LT305/70R16	33X12.50R16LT	W	I24Q	W
	LT265/75R16	32X10.50R16LT	W	I23Q	W
	LT285/75R16	33X11.50R16LT	W	I26Q	W
	LT315/75R16	35X12.50R16LT	W	I27Q	W
17"	35X12.50R17LT	-	-	B	I19Q
	37X12.50R17LT	-	-	B	I24Q
	LT265/65R17	31X10.50R17LT	W	I20Q	-
	LT305/65R17	33X12.50R17LT	W	I21Q	B
	LT265/70R17	32X10.50R17LT	W	I21Q	W
	LT275/70R17	32X11.00R17LT	W	I21Q	-
	LT285/70R17	33X11.50R17LT	W	I21Q	W
	LT295/70R17	34X12.00R17LT	W	I21Q	W
	LT315/70R17	35X12.50R17LT	W	I21Q	W
	35X12.50R18LT	W	I18Q	-	-
18"	LT265/60R18	31X10.50R18LT	B	I19Q	-
	LT305/60R18	33X12.50R18LT	W	I26Q	W
	LT275/65R18	32X11.00R18LT	W	I23Q	-
	LT285/65R18	33X11.50R18LT	W	I25Q	-
	LT265/70R18	33X10.50R18LT	W	I24Q	-
	LT275/70R18	33X11.00R18LT	W	I25Q	W
	LT295/70R18	34X12.00R18LT	B	I29Q	-
	LT305/70R18	35X12.50R18LT	W	I26Q	W
	35X12.50R20LT	B	I25Q	-	-
	LT275/55R20	32X11.00R20LT	B	I20Q	-
20"	LT285/55R20	33X11.50R20LT	B	I22Q	-
	LT305/55R20	33X12.50R20LT	B	I25Q	-
	LT265/60R20	33X10.50R20	B	I21Q	-
	LT275/60R20	33X11.00R20LT	B	I23Q	-
	LT285/60R20	34X11.50R20LT	B	I25Q	-
	LT275/65R20	34X11.00R20LT	B	I26Q	W

W = Raised White Lettering B = Black Sidewall  
For sizes that are special order only, please visit the website



# BE THE BAJA BOSS

## DESTROY THE COMPETITION.

For drivers who take their adventures to the next level no matter the terrain, Mickey Thompson Tires presents the **BAJA BOSS**. Blending aggressive looks and smooth performance, the **BAJA BOSS** is the go-to tyre for four-wheel drivers looking to tackle the toughest terrains.

## A/T

### ALL-TERRAIN

50% ROAD AND SAND 50% DIRT AND MUD

The **BAJA BOSS A/T** combines the best features of the ATZ<sup>PS</sup> and cutting edge technology to deliver exceptional on-road handling, performance and tread life, while also dominating off-road, thanks to its Asymmetrical Tread Design.



## M/T

### MUD-TERRAIN

10% ROAD AND SAND 90% DIRT AND MUD

The **BAJA BOSS M/T** is an ultra-premium extreme mud-terrain radial tyre featuring an Asymmetrical Tread Design and PowerPly XD 3-ply sidewall construction.



**EXTREME SIDEBITERS**  
A/T M/T



**ASYMMETRICAL TREAD**  
A/T M/T



**STONE EJECTORS**  
A/T M/T



**TERRAIN ATTACKING RIBS**  
A/T



**SOUND DEADENING RIBS**  
A/T



**MUD SCOOPS**  
M/T



**FLEX GROOVE**  
M/T



**POWERPLY XD CONSTRUCTION**  
A/T M/T



**SILICA COMPOUND**  
A/T M/T

“JUST  
**SEND  
IT**”  
with Mickey

# THE TOUGHEST

## ALL-TERRAIN AND MUD-TERRAIN

# IN AUSTRALIA.

		BAJA BOSS A/T		BAJA BOSS M/T	
	TYRE SIZE	SIDEWALL	LOAD & SPEED	SIDEWALL	LOAD & SPEED
15"	33X12.50R15LT	-	-	B	108Q
	35X12.50R15LT	-	-	B	113Q
16"	LT265/75R1632X10.50R16	B	123Q		
	LT285/75R1633X11.50R16	B	126Q	B	126Q
17"	LT315/75R1635X12.50R16LT	-	-	B	127Q
	35X12.50R17LT	-	-	B	119Q
	37X12.50R17LT	B	124Q	B	124Q
	40X13.50R17LT	-	-	B	121Q
	LT265/65R1731X10.50R17	B	120Q	-	-
	LT305/65R1733X12.50R17	B	121Q	B	121Q
	LT265/70R1732X10.50R17	B	121Q	-	-
	LT285/70R1733X11.50R17	B	121Q	B	121Q
	LT295/70R1734X12.00R17	B	121Q	-	-
	LT315/70R1735X12.50R17	B	121Q	B	121Q
18"	LT255/85R1735X10.00R17	B	121Q	-	-
	33X12.50R18LT	B	118Q	-	-
	35X12.50R18LT	-	-	B	118Q
	LT265/60R1831X10.50R18	B	119Q	-	-
	LT305/60R1833X12.50R18	B	126Q	B	126Q
	LT285/65R1833X11.50R18	B	125Q	B	125Q
	LT275/70R1833X11.00R18	B	125Q	-	-
	LT295/70R1834X12.00R18	B	129Q	-	-
20"	LT305/70R1835X12.50R18	B	126Q	B	126Q
	33X12.50R20LT	-	-	B	114Q
	35X12.50R20LT	B	125Q	B	125Q
	37X12.50R20LT	B	126Q	B	126Q
	LT285/55R2033X11.50R20LT	B	122Q	B	122Q
	LT305/55R2033X12.50R20LT	B	125Q	-	-
	LT275/60R2033X11.00R20LT	B	123Q	-	-
	LT285/60R2034X11.50R20LT	B	125Q	-	-
	LT275/65R2034X11.00R20	B	126Q	-	-
	LT285/65R2035X11.50R20LT	B	127Q	-	-

B = Black Sidewall

Special order sizes not listed, please visit the website



# COMPETITION

## OFF-ROAD RACING AND ROCK CRAWLING

Many of Mickey's innovations came from his experience in all kinds of racing. He may not have always won, but he didn't let that hold him back. Today Mickey Thompson Tires continue to develop their range of competition tyres specially designed for off-road racing and rock crawling events.

### BAJA PRO

Purpose-built for off-road racing. Many off-road racers have won their class on these time-tested tyres!



### BAJA BOSS X

Packed full of off-road features to tackle the toughest race conditions. Take on rock crawling, mud, snow, sand, dirt and gravel.



### BAJA PRO X

An innovative masterpiece. Slap these bad boys on your beast and you're basically bulletproof.



### MINI MAG

Specially designed for off-road racing. Many off-road racers have won on these time-tested treads!



### BAJA PRO XS

#### PERFORMANCE MUD-TERRAIN

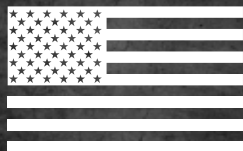
10% ROAD AND SAND 90% DIRT AND MUD

The **BAJA PRO XS** is perfect for rock crawling, mudding and generally showing off. With the title of "the world's tallest D.O.T approved LT tyre" your rig definitely won't go unnoticed.



PLEASE NOTE: No speed rating for road speed stability make the Baja Pro, Baja Boss X, Baja Pro X and Mini Mag unsuitable and illegal for on-road use. All patterns on page 12 are special order only - please call 1300 MICKEY for more information.





SINCE 1963



“JUST  
SEND  
IT”  
with Mickey



# THE RANGE



## BAJA LEGEND EXP LEGEND ALL-TERRAIN

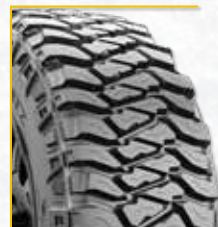


The **BAJA LEGEND EXP** is a step-up in all-terrain performance. It combines proven and unique design elements, technology and engineering. This tyre crosses between an all-terrain and a mud-terrain tyre.

\$

SIZE

pg 8



## BAJA LEGEND MTZ LEGEND MUD-TERRAIN

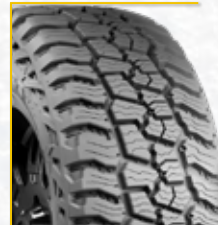


The **BAJA LEGEND MTZ** features an improved compound formula for better traction and Variable Length and Depth Sidebiters for improved off-road traction.

\$

SIZE

pg 8



## BAJA BOSS A/T EXTREME ALL-TERRAIN



The **BAJA BOSS A/T** combines the best features of the ATZ<sup>P3</sup> and cutting edge technology to deliver exceptional on-road handling, performance and tread life, while also dominating off-road, thanks to its Asymmetrical Tread Design.

\$

SIZE

pg 10



## BAJA BOSS M/T EXTREME MUD-TERRAIN



The **BAJA BOSS M/T** is an ultra-premium extreme mud-terrain radial tyre featuring an Asymmetrical Tread Design and PowerPly XD 3-ply sidewall construction.

\$

SIZE

pg 10

## YOUR AUTHORISED RETAILER

To find your local Authorised Retailer visit [mickeythompson.com.au](http://mickeythompson.com.au) or call 1300 MICKEY.



**“ I HEREBY  
SOLEMNLY  
SWEAR, TO  
STAND ON  
THE GAS  
LEAVING ALL  
OTHERS  
IN MY DUST,  
UNDISPUTED,  
FOREVER,  
UNTIL THE  
END OF TIME. ”**

**- THE CREED**

*Mickey Thompson*  
406 M.P.H



**1300 MICKEY** (642 539)  
**MICKEYTHOMPSONTIRES.COM.AU**