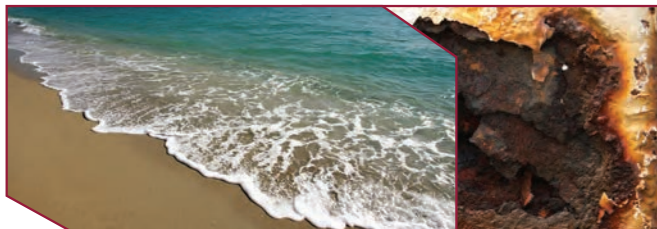


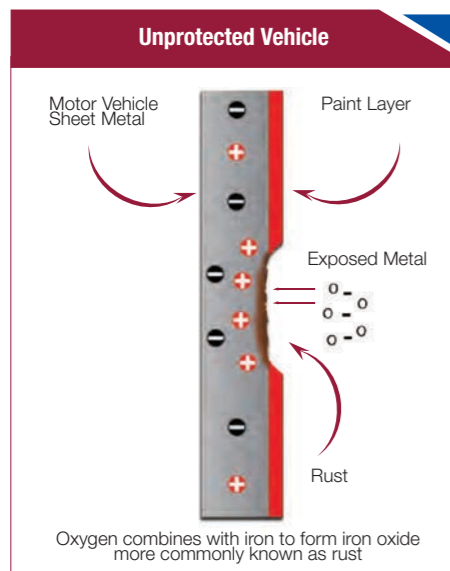
What Causes Rust?

Rust is the normal electrochemical process of metals returning to their natural unrefined state. It occurs when Iron, Oxygen and Water (air moisture) combine. The rusting process can be accelerated when Iron is subjected to nature's minerals, chemicals and temperature fluctuations.



Why Does Rust Happen?

Iron and Oxygen have opposite charges so they seek out each other to combine. When they combine, the Iron loses electrons to Oxygen atoms. This is called oxidation and when it happens it produces a chemical reaction forming Fe₂O₃ Iron Oxide otherwise known as Ferric Oxide, or more commonly known as rust.



Tried, Tested, Proven

CouplerTec Electronic Rustproofing Systems are protecting vehicles and machinery from rust & corrosion throughout Australia and throughout the world!

More than 1,000,000 systems have been sold worldwide.

CouplerTec is used and recommended by;



Mining Companies

CouplerTec's Capacitive Coupling Technology has proven to be the only truly effective Electronic Rustproofing System to be trusted and used in the mining industry to control corrosion. Vehicles and machinery working within the mining industry are exposed to some of the most corrosive environments on Earth.

CouplerTec Electronic Rustproofing Systems are currently being used as the preferred rust proofing method in various mines around the World; this includes gold, silver, copper, salt, coal and mineral mines.



Surf Life Saving Clubs

Surf Life Saving Club vehicles are consistently subjected to the damaging effects of salt water and seaspray. CouplerTec is used and recommended throughout the Australian Surf Life Saving Club fraternity.



Government Authorities

CouplerTec Electronic Rustproofing is the preferred method of rust proofing used by many Local, State and Federal Authorities throughout Australia.



Commercial Systems for trucks, buses and heavy machinery are also available



ONLY COUPLERTEC OFFERS GUARANTEED CREDIBILITY!

CouplerTec's unique 'Capacitive Coupling Technology' has been awarded the following International Patents;

Australia 2007236536, Canada 2642716, France 07718629.4, Germany 07718629.4, Switzerland 07718629.4, United Arab Emirates 1021/2008, United Kingdom 07718629.4 and United States of America 7,901,547.

All CouplerTec products are designed, engineered, and manufactured in Australia to strict ISO 9001 Quality Standards and have been tested to CISPR 25 Electromagnetic Compatibility Standards.

CouplerTec Mission Statement

The Company's mission is: To provide vehicle owners throughout the world with a proven, environmentally friendly, cost effective method of protection against rust & corrosion.



BA 06 2018

CouplerTec Capacitive Coupling Technology



FREE CALL 1800 66 7878

www.facebook.com/CouplerTec.rustproofing

www.couplertec.com

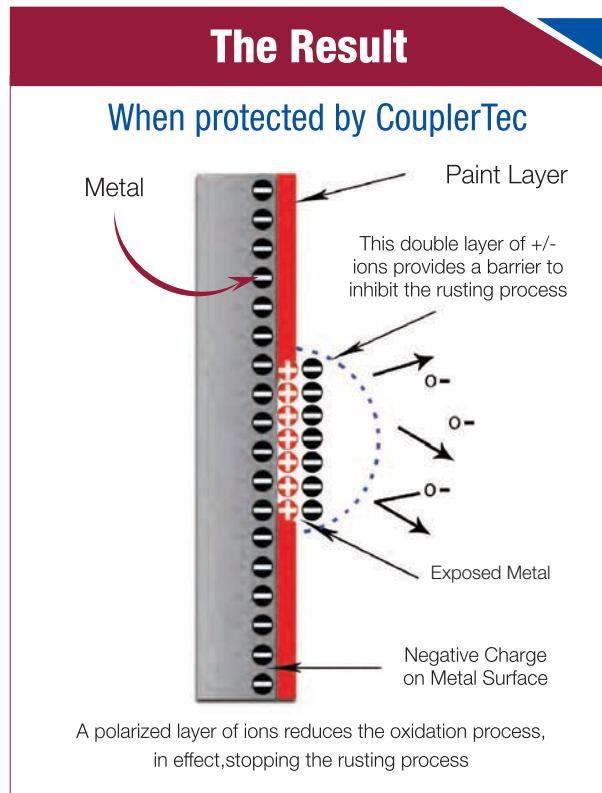
The World's Best PROTECTION From RUST!

How It Works

CouplerTec's Patented Technology interferes with the electrical charge between Iron and Oxygen so it becomes hard for them to combine to form rust. In other words, it interferes with the metals ability to react with Oxygen.

We achieve this by creating a negative (-) electrostatic surface charge on the metal surface of the vehicle. The (-) Oxygen atom is repelled by the (-) electrostatic surface charge.

For more detailed information on how CouplerTec works please visit CouplerTec.com



Product Benefits

- ▶ 10 Year Corrosion Warranty (conditions apply)
- ▶ Protects 100% of the vehicles metal surface, inside and out*.
- ▶ Protects parts that rustproofing sprays and coatings cannot reach.
- ▶ Helps stop paint from oxidizing and keeps the paintwork looking like new.
- ▶ Prevents rust damage caused by stone chips and scratches in the paintwork.
- ▶ Systems are transferable from vehicle to vehicle.
- ▶ Once only low cost investment.
- ▶ Reduces maintenance costs associated with corrosion.
- ▶ Will slow existing corrosion.
- ▶ Helps to retain strong resale value.
- ▶ Environmentally friendly (no need for toxic sprays or coatings)

*Any metal component that is insulated from earth is not protected



CouplerTec is the World leader in the manufacture and supply of electronic rustproofing systems for the Automotive and Heavy Equipment industries. More than 1,000,000 CouplerTec Electronic Rustproofing systems have been sold Worldwide. CouplerTec's Internationally Patented Capacitive Coupling Technology has a superior reputation for product effectiveness, quality and reliability.

Key Product Features

- ▶ Incorporates CouplerTec Capacitive Coupling Technology The ONLY tried tested and proven technology to protect motor vehicles, trucks, buses & machinery from rust and corrosion.
- ▶ Solid State Electronics offers an indefinite life span.
- ▶ Multiple Capacitive Couplers, each charged by their own dedicated circuit.
- ▶ The CouplerTec module incorporates a micro processor that employs a process called 'Monitored & Controlled Performance' This is where the micro processor monitors and controls the performance of the system, ensuring that it is operating at the optimum level. The system confirms that it is working correctly by way of a Green flashing LED, giving you peace of mind that your vehicle is being protected. Conversely, the system will also indicate the detection of a fault by way of a Red flashing LED. The system will reset after the fault has been rectified.
- ▶ Suitable for use on Electric and Hybrid powered vehicles.



Automotive Systems Range

Model: CT2

Product Code: CT2SFK

Description: Standard System 12V Input, Two Capacitive Couplers

This system has been specifically designed to protect motor cars* (*hatchbacks, sedans, wagons, SUV's and small vans**) from rust. It will also dramatically reduce the effects of corrosion on those vehicles which are frequently exposed to use within highly corrosive environments such as; driving on salted roads. In other words, it will extend the life of these vehicles. (**For large Vans (Long Wheel Base) use the larger CT4 Heavy Duty System).



Model: CT4

Product Code: CT4SFK

Description: Heavy Duty System 12V Input, Four Capacitive Couplers

This system has been specifically designed to protect the 4WD vehicle from rust; even when these vehicles are exposed to FREQUENT use within highly corrosive environments, such as; driving on beaches or salted roads. This system may also benefit Motor Cars that are suffering from minor rust problems.



Model: CT6

Product Code: CT6SFK

Description: Extreme Heavy Duty System 12V Input, Six Capacitive Couplers

This system offers the ultimate in protection. Specifically designed to protect Four Wheel Drive vehicles used by Mining Companies, Surf Clubs and Professional Fishermen, it will dramatically reduce corrosion on 4WD vehicles that are exposed to CONSTANT use within highly corrosive environments. This system may also benefit Four Wheel Drive vehicles that are suffering from minor existing rust problems.



CouplerTec has been protecting vehicles for the BMA Mitsubishi Alliance mining projects for more than 7 years - Our clients are very happy with CouplerTec.

Ross Fredrickson
Director - Macs Engineering



Thanks to CouplerTec we have saved a fortune on vehicle maintenance costs, and the savings have ensured we spend money on resources to save lives"

Lea Cook Operations
Northcliffe Surf Club



Our clients are very grateful that we deliver vehicles that are protected from rust and corrosion, thanks to CouplerTec

Mitchell Russell
Vehicle Components - Mills Tui - Bodyline



We were amazed at how well the vehicles retained their almost as new condition, thanks to CouplerTec.

GR Kellar
Plant Fleet Services - Logan City Council



We are very satisfied with how well CouplerTec protects our vehicles from rust

Murray McMillan
Emergency Coordinator Kiama SLSC