

Dakar R/T HYBRID TERRAIN TIRE FOR ON & OFF-ROAD

The best of both worlds from mud-terrain and all-terrain product offerings. Specifically, the formula provides better tire grip, lower noise for the high-way ride, while still maintaining great traction on the non-pave road and in snow.

CARCASS STRUCTURE

Using the latest high-strength carcass material, the overall strength of the tire is further improved. Thickened belt bundle steel wire is more resistant to puncture. Using the 2-ply winding crown belt applied to high-performance car tires, high-speed performance is better.

MORE TRACTION

The alternating tapered and step block edges both provide additional biting edges for more traction.

RIM PROTECTOR

Thick base rubber protects the tire and rim protector design safeguards wheels from damage in rough going.

HIGH-GRADE PUNCTURE RESISTANCE

The staggered shoulder with a V-shaped extra-thick 3-ply sidewall offers additional sidewall strength, puncture resistance also provides a certain grip to help the vehicle easier to get out of the mud.

ENGINEERED IN USA

ENGINEERED IN USA

M+S

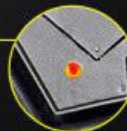


LOW NOISE

Middle area tread pattern designed for the paved road, the dynamic hybrid tread pattern with the small-angle design of the main groove can better reduce the inherent noise when driving on the highway.

AGGRESSIVE OFF-ROAD LOOKS

Open shoulder design with large tread blocks and deep grooves improve off-road traction, and shoulder block design adds to lateral grip and impact resistance.



STUD-ABLE DESIGN FOR A BETTER ANTI-SKID EFFECT

Designed with Studdable holes, users can set nails according to their needs, for snow and ice roads or non-paved roads can play a better anti-skid effect.

EXCELLENT WET GRIP

The small lateral grooves can drain the road surface water faster and prevent the tire from slipping out of control. The combination of continuous striped tread blocks makes high-speed driving more stable.

BETTER SELF-CLEAN ABILITY WITH STONE EJECTOR

Special design in grooves to prevent damage from stones, and better self-clean ability to keep the grooves clean and ready to provide optimum grip in all conditions.

Mark Ma Signature Series



DAKAR RT

4WD PERFORMANCE

Pattern Size	Load & Speed Rating	Ply Rating	Overall Diameter	Section Width	Rim Diameter	Approved Rim Width Range (IN.)		
LT265/70R16 (31X11.00R16LT)	121/118	S	10PR	784	272	16	7-8-9	NEW
● LT265/75R16	123/120	Q	10	804	267	16	7-7.5-8	NEW
● LT285/75R16	126/123	Q	10	834	286	16	7.5-8-9	
● LT265/65R17	120/117	Q	10PR	782	272	17	7.5-8-9.5	
● LT265/70R17	121/118	Q	10	804	272	17	7-8-8.5	NEW
● LT285/65R17	121/118	Q	10	802	292	17	8-8.5-10	COMING SOON
● LT285/70R17	121/118	Q	10	832	292	17	7.5-8.5-9	
● LT35X12.5R17	121	Q	10PR			17		
● LT35X12.5R17	131	Q	12PR	RWL		17		
● LT35X12.5R17	131	Q	12PR	KEVLAR		17		
● LT265/60R18	119/116	Q	10PR	781	272	18	7.5-8-9.5	NEW
● LT265/65R18	122/119	Q	10	801	272	18	7.5-8-9.5	COMING SOON
● LT285/65R18	125/122	Q	10	827	292	18	8-8.5-10	NEW
● LT35X12.5R18	128	Q	10			18	8-8.5-10	NEW
RT 265/50R20	111	Q	XL	780	277	20	7.5-8.5-9.5	NEW
● RT 35X12.50R20LT	126	Q	12PR	883	318	20	8.5-10-11	NEW

AVAILABLE IN ● RED LETTERING ● RAISED WHITE LETTERING (ONLY WHILE STOCK LASTS)

PERFORMANCE RATING

DEALER LOCATOR



NO ROAD. NO PROBLEM.

www.blackbear tyresaustralia.com.au