

TREPADOR M8060

Performance when it's wanted.
Safety when it's needed.

Designed to conquer the most extreme off-road terrain with ease. The **Trepador M8060** range (with both radial and bias ply sizes available) features an ultra-aggressive tread pattern and sidewall design to provide traction in harsh off-road conditions.



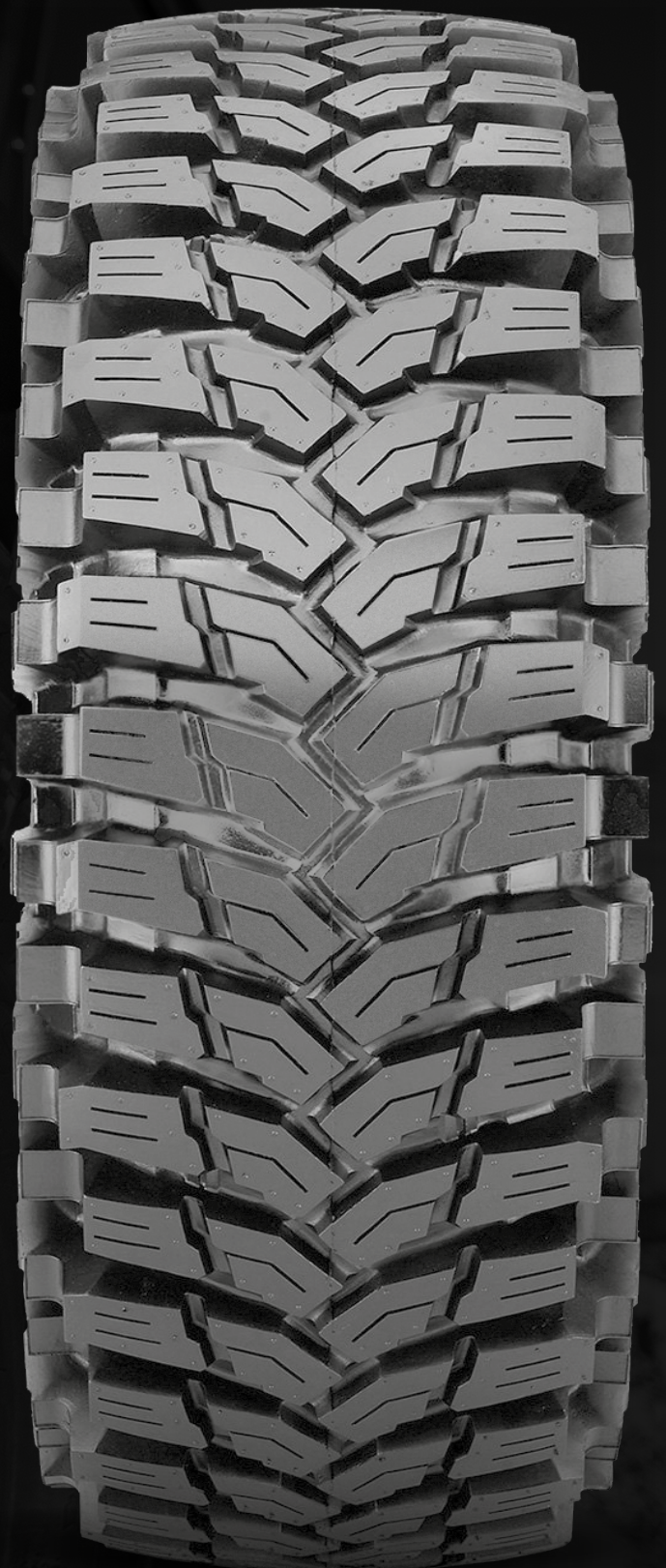
Aggressive directional tread design ensures **uniform tread contact** and **sure-footed handling**.



Multi-curve tread siping provides **excellent traction** on loose dirt, **enhanced braking** and **improved driving performance**.



Robust edge blocks provide **excellent all-terrain traction**, outstanding **self-cleaning ability** and **unbeatable puncture resistance**.



MAXXIS® TREPADOR M8060



SIZE	PLY RATING	TYPE	PATTERN	LOAD & SPEED	TREAD DEPTH (mm)	SECTION WIDTH (mm)	OVERALL DIA. (mm)	ROLLING CIRC. (mm)	MEAS. RIM WIDTH
205/70R15C	6	TL	TREPADOR M8060 RADIAL	104/102Q	12.7	212	670	2030	6
LT35X12.50-16	8	TL	TREPADOR M8060 BIAS	120K	17.7	336	888	-	10
LT37X12.50-16	8	TL	TREPADOR M8060 BIAS	124K	17.7	340	940	-	10
LT37X12.50-17	10	TL	TREPADOR M8060 BIAS	124K	17.7	377	944	-	10
LT40X13.50-17	8	TL	TREPADOR M8060 BIAS	124K	17.7	365	1020	-	11
LT42X14.50-17	6	TL	TREPADOR M8060 BIAS	121K	17.7	389	1090	-	11

E&OE. Maxxis Tyres Australia/Tyremax Pty Ltd makes no representation or warranties with respect to the accuracy or completeness of the contents of this portal/publication and specifically disclaims any implied warranties of merchantability or fitness for any particular purpose and shall in no event be liable for any loss of profit or any other commercial damage, including but not limited to special, incidental, consequential, or other damages. Dimensions, measurements and technical specifications are based on manufacturer and tyre industry standards. Physical measurements of product may be within +/- 2 to 5% of what is stated here.