

2023 Q4 - 2024 Q1



Product Catalogue - Selected Range

Engineered to withstand the raw, the rugged and the untamed environments - the STEDI™ name has become synonymous with cutting edge design and market-leading performance.

STEDI™ was founded in 2013 out of a small 290m² warehouse in Melbourne, Australia. Our commitment to maximising the performance and aesthetic of LED driving lights has seen STEDI™ consistently reach new heights. We are passionate about designing and manufacturing the best LED lighting products in the game, with pricing that makes them available to everyone.

When you enter the world of STEDI™, you're buying into a product that is mechanically and optically engineered with our know-how and our tooling, with our reputation and warranty standing right behind it.

Team Stedi



Always refer to the product specification, installation instructions and vehicles owner's manual for suitability, fitment, installation and use of a specific product. For all other inquiries or support please contact your local STEDI™ dealer or visit our support page at support.stedi.com.au.

Type-X™ EVO



1 Lux Distance (Pair)
1470m (Spot) / 667m (Flood)

Raw Lumens
18,920 (Each)

Colour Temperature
5000 Kelvin

Beam Pattern
Spot / Flood

Ingress Protection
IP68 Submersible up to 3m

Weight
3.30kg (Each)

Type-X™ PRO



1 Lux Distance (Pair)
1155m

Raw Lumens
26,270 (Pair)

Colour Temperature
5700 Kelvin

Beam Pattern
Combo (Spread & Spot)

Ingress Protection
IP68 Submersible up to 3m

Weight
2.86kg (Each)

Type-X™ SPORT 8.5" / 7"



1 Lux Distance (Pair)
1050m / 895m

Raw Lumens
20,780 (Pair) / 16,640 (Pair)

Colour Temperature
5700 Kelvin

Beam Pattern
Combo (Spread & Spot)

Ingress Protection
IP68 Submersible up to 3m

Weight
3.35kg (Each) / 2.25kg (Each)

Quad Pro™



1 Lux Distance (Pair)
833m

Raw Lumens
17,040 (Pair)

Colour Temperature
5700 Kelvin

Beam Pattern
Combo (Spread & Spot)

Ingress Protection
IP68 Submersible up to 3m

Weight
1.4kg (Each)

Please note: The above measurements will vary depending on desired mounting methods, product placement and external environmental factors. All STEDI™ lights are mechanically tested indoors and outdoors for durability and performance. Please check local and state requirements prior to installation and off-road use. Some local and/or state jurisdictions require lights to be covered on public roads, even when not illuminated. Light covers can be purchased separately.

TYPE X SERIES



Our iconic TYPE-X™ series epitomises our commitment to maximising light output, and is undoubtedly the most potent manifestation of STEDI™ yet.

Copyright © 2013 to Present STEDI. All rights reserved.



ST3303 PRO



Available Sizes

11" | 18.4" | 23.3"* | 28.2" | 39"

Light Bar Category

Pro Series - Double Row

Colour Temperature

5700 Kelvin

Beam Pattern

Combo (Spread & Spot)

Ingress Protection

IP68 Submersible up to 3m

Operating Temperature

-40°C ~ +60°C

ST3301 PRO



Available Sizes

18.6" | 24.5" | 27.5" | 41"

Light Bar Category

Pro Series - Single Row

Colour Temperature

5700 Kelvin

Beam Pattern

Combo (Spread & Spot)

Ingress Protection

IP68 Submersible up to 3m

Operating Temperature

-40°C ~ +60°C

ST4K



Available Sizes

8" | 12" | 14" | 22" | 28" | 32" | 42" | 50" | 52"

Light Bar Category

Classic Series - Double Row

Colour Temperature

5700 Kelvin

Beam Pattern

Combo (Spread & Spot)

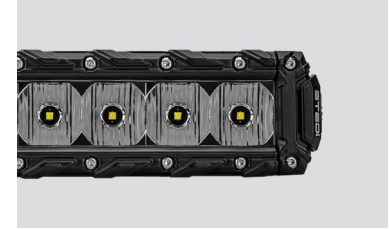
Ingress Protection

IP68 Submersible up to 3m

Operating Temperature

-40°C ~ +60°C

ST3K



Available Sizes

7.5" | 11.5" | 21.5" | 31.5" | 41.5" | 51.5"

Light Bar Category

Slim Series - Single Row

Colour Temperature

5700 Kelvin

Beam Pattern

Combo (Spread & Spot)

Ingress Protection

IP68 Submersible up to 3m

Operating Temperature

-40°C ~ +60°C

Please note: The above measurements will vary depending on desired mounting methods, product placement and external environmental factors. All STEDI™ lights are mechanically tested indoors and outdoors for durability and performance. Please check local and state requirements prior to installation and off-road use. Some local and/or state jurisdictions require lights to be covered on public roads, even when not illuminated. Light covers can be purchased separately.

*ST3303 Light bar 23.3" is available in full flood option and or combo beam (Spread & Spot)

ST2K



Available Sizes
40.5" | 50.8"

Light Bar Category
Curved Series

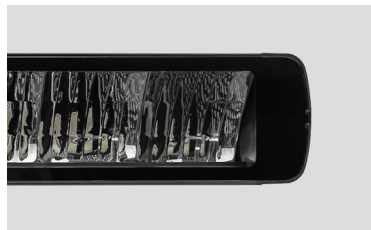
Colour Temperature
5700 Kelvin

Beam Pattern
Spread

Ingress Protection
IP68 Submersible up to 3m

Operating Temperature
-40°C ~ +60°C

ST-X



Available Sizes
12" | 21.5" | 40.5" | 50"

Light Bar Category
E-Mark

Colour Temperature
5000 Kelvin

Beam Pattern
Spread

Ingress Protection
IP68 Submersible up to 3m

Operating Temperature
-40°C ~ +60°C

ST1K



Available Sizes
13.5" | 21.5"*

Light Bar Category
E-Mark

Colour Temperature
5000 Kelvin / Yellow Lens 3300 Kelvin

Beam Pattern
Spread

Ingress Protection
IP68 Submersible up to 3m

Operating Temperature
-40°C ~ +60°C

7 Inch Carbon Headlight



Beam Modes
High Beam / Low Beam / Parker Light

Raw Lumens
1800Lm / 1250Lm / 150Lm

Colour Temperature
5700 Kelvin

Lens Material
LEXAN Polycarbonate

Ingress Protection
IP67 Submersible up to 1m

Weight
1.14kg (Each)

Please note: The above measurements will vary depending on desired mounting methods, product placement and external environmental factors. All STEDI™ lights are mechanically tested indoors and outdoors for durability and performance. Please check local and state requirements prior to installation and off-road use. Some local and/or state jurisdictions require lights to be covered on public roads, even when not illuminated. Light covers can be purchased separately.

Please note: ST1K 21.5" LED light bar is available in a clear or yellow lens.



C-4 LED Light Cube



Variants
● Industrial ● Black ● Marine

1 Lux Distances
 217m (Spot) / 129m (Flood) / 74m (Diffuse)

Colour Temperature
 5700 Kelvin

Beam Pattern Options
 Spot / Flood / Diffuse

Ingress Protection
 IP68 Submersible up to 3m

Weight
 0.55kg (Each)

Surface Rock Light Series



Variants
● RGB ● Black ● Marine

1 Lux Distances
 N/A

Colour Temperature
 5700 Kelvin / 1500 Kelvin / RGB

Beam Pattern
 120° Spot Beam

Ingress Protection
 IP69

Weight
 0.10kg (Each)

ST3301 PRO Work Light Series



Available Sizes
 4.6" | 7.5"

Raw Lumens
 1,720 Lumen / 3,440 Lumen

Colour Temperature
 5700 Kelvin

Beam Pattern
 45° Flood Beam

Ingress Protection
 IP68

Weight
 0.60kg / 0.84kg

10W Mini V2



Power Source
 12v & 24v Compatible

1 Lux Distances
 28m / 18.4m

Colour Temperature
 5700 Kelvin / 1500 Kelvin

Beam Pattern
 Flood

Ingress Protection
 IP67 Submersible up to 1m

Weight
 0.30kg

Please note: The above measurements will vary depending on desired mounting methods, product placement and external environmental factors. All STEDI™ lights are mechanically tested indoors and outdoors for durability and performance. Please check local and state requirements prior to installation and any off-road use.

Stellar Camping Lantern



Power Source
3.7V / 10400mAh

Lumens
9 Lumens - 500 Lumens

Colour Temperature
1300 Kelvin / 3200 Kelvin

Operating Time
237 Hrs (Low Mode) / 6 Hrs (High Mode)

Ingress Protection
IP65 Water & Dust-Resistant

Weight
0.645kg

2 Pack 20W Slim



Power Source
12v & 24v Compatible

1 Lux Distances
78m

Colour Temperature
5700 Kelvin

Beam Pattern
45° Flood Beam

Ingress Protection
IP67

Weight
0.44kg (Each)

Roof Light Wiring Concealer



Housing Length
1200mm / 10mm Internal Diameter

Product Material
Black EPDM Flexi Rubber

Application
3M™ Adhesive

Application
Versatile Application

Protection
Water & Dust-Resistant

Units
Sold Individually

Assorted Wiring / Harness



Connection Type
Single or Dual Output DT/DT-P

Relay Rated
60 Amp Relay

Insulation
UV Rated

Trigger
Switch Operated / High Beam Triggered*

Polarity Protection
Positive & Negative Switch Compatible

Weight
Assorted

Please note: Check local and state regulations prior to installation and use. All high beam triggered harnesses include both a standard H4 & HB3 high beam adaptor, alternatively other adaptors are available including a variety of vehicle specific adaptors (sold separately).



Type-S LED Head Torch



Power Source
AAA Batteries (Included)

Lumens
10 Lumens - 300 Lumens

Colour Temperature
6000 Kelvin / 4500 Kelvin

Operating Time
115 Hrs (Low Mode) / 4 Hrs (High Mode)

Ingress Protection
IP65 Water & Dust-Resistant

Weight
0.067kg

T1000 LED Task Light



Power Source
3.7V / 5200mAh / 9.6Watt

Lumens
30 Lumens - 1000 Lumens

Colour Temperature
4500 Kelvin / 1700 Kelvin

Operating Time
84 Hrs (Low Mode) / 4 Hrs (High Mode)

Ingress Protection
IP65 Water & Dust-Resistant

Weight
0.32kg

T1500 LED Task Light



Power Source
3.7V / 10400mAh / 38.5Watt

Lumens
45 Lumens - 1500 Lumens

Colour Temperature
4500 Kelvin / 1700 Kelvin

Operating Time
139 Hrs (Low Mode) / 5 Hrs (High Mode)

Ingress Protection
IP65 Water & Dust-Resistant

Weight
0.60kg

T3000 LED Area Light



Power Source
11.1v / 5200mAh / 57.72Watt

Lumens
3000 Lumens

Colour Temperature
6500 Kelvin / 2700 Kelvin

Operating Time
56 Hrs (Low Mode) / 2 Hrs (High Mode)

Ingress Protection
IP65 Water & Dust-Resistant

Weight
1.50kg

Vice Bull Bar Tube Clamps®



Available Sizes
22mm - 77mm* Diameter

Material
Cast Aluminium / UV Stable Powder Coated

Compatibility
Side-mounted LED Light Bar*

Inclusions
Mounting Hardware

Quantity
Sold in pairs

Weight from*
0.90kg (Single)

Hex Bull Bar Tube Brackets



Available Sizes
40mm - 77mm* Diameter

Material
Aluminium / Anodised Powder Coated

Compatibility
Tube Style Bull Bar / Nudge bar

Inclusions
Mounting Hardware

Quantity
Sold in pairs

Weight from*
0.20kg (Single)

Tube Mounting Bracket



Available Sizes
28mm - 35mm Diameter

Material
High-Grade Alloy Steel

Compatibility
Tube Style Bull Bar / Nudge bar

Inclusions
Mounting Hardware

Quantity
Sold in pairs

Weight from
0.90kg (Single)

Bull Bar Tube Bracket



Available Sizes
35mm - 81mm Diameter

Material
Cast Aluminium / Stainless Steel Fasteners

Compatibility
Tube Style Bull Bar / Nudge bar

Inclusions
Mounting Hardware

Quantity
Sold in pairs

Weight from
1.80kg (Single)

Please note: To measure whether these brackets are suitable for your application, please measure the circumference of your round bar and apply below formula; diameter = circumference / 3.14. For more information on mounting brackets please refer to our installation guide available via STEDI™ Help Centre: support.stedi.com.au



STEDI™ Air Fresheners



Options
Smiley / Owl

Fragrance
Black Ice / New Car

Lasting Amount
5 - 10 Days

Usage
Single use only

Quantity
Single Unit

Weight
0.10kg

Smiley Wireless Charger



Power Source
15w / 10w / 7.5w / 5w

Compatibility
Smartphone Qi-Compatibility

Construction
Aluminium / Rubber Base

Dimensions
98mm x 98mm x 62.5mm

Interface
USB Type-C Port to USB-A

Weight
0.20kg

4 Pack Tyre Valve Caps



Options
Smiley / Owl

Sealant
Internal Rubber Seals

Shape
Hexagon Configuration

Dimensions
12mm x 11mm

Fitment
Standard Tyre Valve Stem

Weight
0.030kg

Pro Thermo Bottle



Options
● Orange ● Midnight ● Stainless

Capacity
500ml

Thermo Insulation
12 - 24 Hours

Material
304 Stainless Steel

Inclusions
Tactile Rubber Finish

Weight
0.320kg

STEDI™ Flannel Shirt



Material
100% Cotton

Sizing
Extra Small - 4XL* (Selected Styles)

Fitment Style
Regular / Tailored Fitment

Washing Instructions
Machine Wash - Cold

Branding Application
STEDI™ Owl Stamp (Front / Back)

Quantity
Single Unit

Assorted STEDI™ Tees



Material
Cotton / Polyester Blend

Sizing
Extra Small - 4XL* (Selected Styles)

Fitment Style
Tapered Fit

Washing Instructions
Machine Wash - Cold

Branding Application
Screen Print

Quantity
Single Unit

Assorted STEDI™ Hoodies



Material
Cotton / Polyester Blend

Sizing
Extra Small - 4XL* (Selected Styles)

Fitment Style
Regular Fit

Washing Instructions
Machine Wash - Cold

Branding Application
Screen Print / Embroidery

Quantity
Single Unit

STEDI™ Pro Pack



Pre-selected items
Pro pack box / STEDI™ card / Tissue wrap

+
Task Range selector
Type-S / T1000 / T1500 / T3000

+
STEDI™ Thermo Selector
Stainless Steel / Orange / Midnight Sky

+
Head wear Selector
Baseball Cap / Snapback / Merino Beanie

+
Electronic Accessory
STEDI™ Wireless Charger - Smiley

+
Additional Extra
Air Freshener / Valve Caps / Sticker Option

Please note: Ensure you check sizing before purchasing. Please refer to sizing diagrams via specific product pages via stedi.com.au



FX-220



Power Source
10180 Li-ion Battery

Lumens
5 Lumens - 220 Lumens

Distance Performance
57m (High mode) / 15m (Low mode)

Operating Time
23mins (High mode) / 7.5hrs (Low mode)

Ingress Protection
IPX8 / 2m Drop Rating

Weight
11g (Including Battery)

FX-1000



Power Source
16340-A Li-ion Battery

Lumens
15 Lumens - 1000 Lumens

Distance Performance
129m (High mode) / 12m (Low mode)

Operating Time
75mins (High mode) / 7.5hrs (Low mode)

Ingress Protection
IPX8 / 1.5m Drop Rating

Weight
44.5g (Including Battery)

FR-1200 Head Torch



Power Source
18650 Li-ion Battery

Lumens
3 Lumens - 1200 Lumens

Distance Performance
115m (High mode) / 1.5m (Low mode)

Operating Time
128mins (High mode) / 400hrs (Low mode)

Ingress Protection
IPX8 / 1m Drop Rating

Weight
40.2g (Including Battery)

FX-3300



Power Source
21700 Li-ion Battery

Lumens
7 Lumens - 3300 Lumens

Distance Performance
362m (High mode) / 10m (Low mode)

Operating Time
215mins (High mode) / 252hrs (Low mode)

Ingress Protection
IPX8 / 1m Drop Rating

Weight
60.8g (Including Battery)

Please note: The above measurements will vary depending on product placement, usage and environmental factors. All STEDI™ lights are mechanically tested indoors and outdoors for durability and performance.

FZ-460LEP



Power Source
18650 Li-ion Battery

Lumens
8 Lumens - 460 Lumens

Distance Performance
1100m (High mode) / 468m (Middle mode)

Operating Time
3.5hrs (High mode) / 58hrs (Low mode)

Ingress Protection
IPX8 / 1m Drop Rating

Weight
112.1g (Including Battery)

Please note: The above measurements will vary depending on product placement, usage and environmental factors. All STEDI™ lights are mechanically tested indoors and outdoors for durability and performance.

FX-4800 Tactical



Power Source
21700-2S Li-ion Battery

Lumens
35 Lumens - 4800 Lumens

Distance Performance
1600m (High mode) / 140m (Low mode)

Operating Time
100mins (Xtrm mode) / 112hrs (Low mode)

Ingress Protection
IPX8 / 1m Drop Rating

Weight
345.8g (Including Battery)

Assorted Blister Pack Batteries



Power Source
16340 - 21700 Li-ion Battery

Capacity
80mAh - 5000mAh

Performance
High Drain Rechargeable

Lifespan
500x Cycles

Unit Count
Single

Weight
Assorted

Please Note: Battery Care / Usage DO NOT USE if battery wrapper is damaged. DO NOT use if battery discharge current does not match your product. DO NOT keep your battery in a pocket, purse or other receptacle containing metal objects to avoid short circuit. Battery may explode or catch fire if mistreated. DO NOT disassemble, puncture, cut, crush short-circuit, incinerate, or expose to water, fire or high temperature above 100°C (212°F).

21700-2S Li-ion Battery



Power Source
2x 21700 Li-ion Battery

Capacity
5000mAh

Performance
High Drain Rechargeable

Lifespan
1000x Cycles

Unit Count
Single

Weight
0.150g

Keep away from children if swallowed, promptly see a doctor. DO NOT mix fresh batteries with used batteries. Batteries should never be put in your recycling or waste bin. Rechargeable batteries and lithium-ion batteries are hazardous and could produce sparks that may start a fire in the trucks or recycling facility. Please check your local regulations for correct disposal of expired or batteries that are no longer in use.

Short Type Push Switch (Assorted)



Power Rating
3A @ 12v

Illumination
Blue LED Back Lighting

Icon Design
Laser Etched Print (Multiple Options)

Compatibility
Various* (Toyota)

Dimensions
32mm x 21mm

Quantity
Single Unit

Square Type Push Switch (Assorted)



Power Rating
3A @ 12v

Illumination
Blue LED Back Lighting

Icon Design
Laser Etched Print (Multiple Options)

Compatibility
Various* (Toyota)

Dimensions
22.5mm x 22.5mm

Quantity
Single Unit

Rhino Rack Platform V2.0



Material
304 Stainless Steel

Product Finish
Powder Coated

Vehicle Compatibility
Rhino Rack™ Platform / Tray / Tradie

Suitability
STEDI™ Light bar 40.5" - 52"

Mounting Hardware
Included

Quantity
Single Unit

Inner Grille Bracket (Ford)



Material
4mm 304 Stainless Steel

Product Finish
Textured UV Powder Coated

Vehicle Compatibility
Next Gen Ranger & Everest (Ford)

Suitability
2x STEDI™ ST3303 PRO 11" *

Mounting Hardware
Included

Quantity
Single Unit

Please note: This product is only compatible with the STEDI™ 3303 11" light bar and will not suit other light bar solutions.

SUPPORT. WE GET IT.

Online Store

stedi.com.au

STEDI™ Blog

stedi.com.au/blog

Dealer Locations

stedi.com.au/stockists

Influencer Application

stedi.com.au/influencer/landing/

Dealer Application

stedi.com.au/company/account/create

Returns Request / Warranty

stedi.com.au/rma/guest/login/

Privacy Policy

stedi.com.au/privacy-policy

Terms & Conditions

stedi.com.au/terms-and-conditions

TikTok

tiktok.com/@stedi_australia

Instagram

instagram.com/stedi_australia/

Facebook

facebook.com/STEDISTORE

YouTube

youtube.com/@stedi_australia

Contact Information

HQ & Showroom

1/1 Magnesium Place, Truganina,
Victoria, Australia 3029

Showroom Hours

9am - 4pm, Monday - Friday

Ph: (03) 8360 9261

E: enquiries@stedi.com.au

Imagery References

- | | | | |
|------------|--------------------------|-------------|-----------------------------------------------|
| 1. Page 6 | Type-X™ Series | 8. Page 19 | Micro V2 7.8 Inch 5700K |
| 2. Page 7 | Type-X™ PRO | 9. Page 24 | 10W Mini V2 LED Amber Flood Light 1500K |
| 3. Page 12 | Type-X™ EVO | 10. Page 24 | Stellar LED Camping Lantern |
| 4. Page 12 | Rock Light RGB / Marine | 11. Page 25 | Hex Bull Bar Tube Mounting Brackets |
| 5. Page 13 | 7 Inch Homage Headlight | 12. Page 30 | Switch Panel - Next-Gen Ford Ranger / Everest |
| 6. Page 18 | Micro V2 13.9 Inch 2700K | 13. Page 30 | FR1200 LED Head Torch |
| 7. Page 18 | C-4 Cube Black Edition | 14. Page 31 | License Plate Reverse Bracket |

Copyright & Disclaimer

Unless otherwise specified and/or credited, all images, artwork, text and graphics, from STEDI™, are the copyright of STEDI™. All rights reserved. Designs, original art, concepts and/or any supplied die-lines presented are for the use of the potential / authorised clientele only. All art, images, designs, and material are copyright of STEDI™ and may not be resold, added to design or art collections, used for reproduction, used as part of a gallery or template collection or redistributed in

any manner without express written permission by STEDI™. Any use of graphic material (including but not limited to: conceptual art, print and or digital designs) including mirroring or copying is prohibited without the express written consent of STEDI™. Ownership of all graphic material (including but not limited to: conceptual art, print and or digital designs) is the full property of STEDI™.



Copyright © 2013 to Present STEDI™. All rights reserved.