



SERIES BULL BAR AM111-P

ATLAS PLUS

PLUS



FEATURES

EVERYTHING YOU NEED, NOTHING YOU WON'T



AUSTRALIAN DESIGNED AND ADR CERTIFIED



FULL BUMPER REPLACEMENT, SLEEK & INTEGRATED TO THE VEHICLE. LIGHTWEIGHT DESIGN.



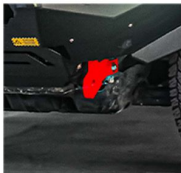
3MM HIGH-GRADE STEEL PLATE



POWDER COATED MATTE BLACK FINISH (FROM FACTORY) COLOR-CODED FINISH (AVAILABLE LOCALLY)



SUPPORT ORIGINAL FACTORY SENSORS & RADAR MODULE COMPATIBLE



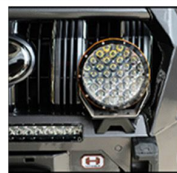
3.5T RATED RECOVERY POINTS



FULL LED TURN SIGNALS AND DAYTIME RUNNING LIGHTS AND FOG LAMPS



WINCH COMPATIBLE (UP TO 12,000LBS)



MOUNTING POINTS FOR LIGHT BAR OR SPOT LIGHTS



MINIMUM PROTRUSION FROM FRONT GRILL

+ FOR SAFETY IN MIND



BUILT WITH AIRBAG COMPLIANT FOR SAFETY IN MIND. OUR PRODUCT LINE COMPLIES WITH ADR STANDARDS, GUARANTEEING HIGH SAFETY REQUIREMENTS FOR THOSE UNFORESEEN OCCASIONS.

BLENDING IN IS NOT AN OPTION

SETTING A NEW STANDARD IN DRIVING PERFORMANCE THE ATLAS SERIES OFFERS A LIGHTWEIGHT STEEL FRAME AND ADVANCED SEQUENTIAL LIGHTING THAT HEIGHTENS YOUR VIEWING EXPERIENCE. WITH ITS MODERN DESIGN AND CUTTING-EDGE TECHNOLOGY, THE ATLAS SERIES OFFERS THE ULTIMATE IN VISIBILITY AND PROTECTION TO KEEP YOU SAFE ON THE ROAD.



FOUNDED IN 1994
HAMER DESIGNS AND MANUFACTURES
PREMIUM 4X4 ACCESSORIES

PHONE : 1300 545 554
WEBSITE : WWW.HAMER4X4.COM.AU
EMAIL : SALES@HAMER4X4.COM.AU
ADDRESS : 104 FOX DRIVE, DANDENONG SOUTH VIC 3175